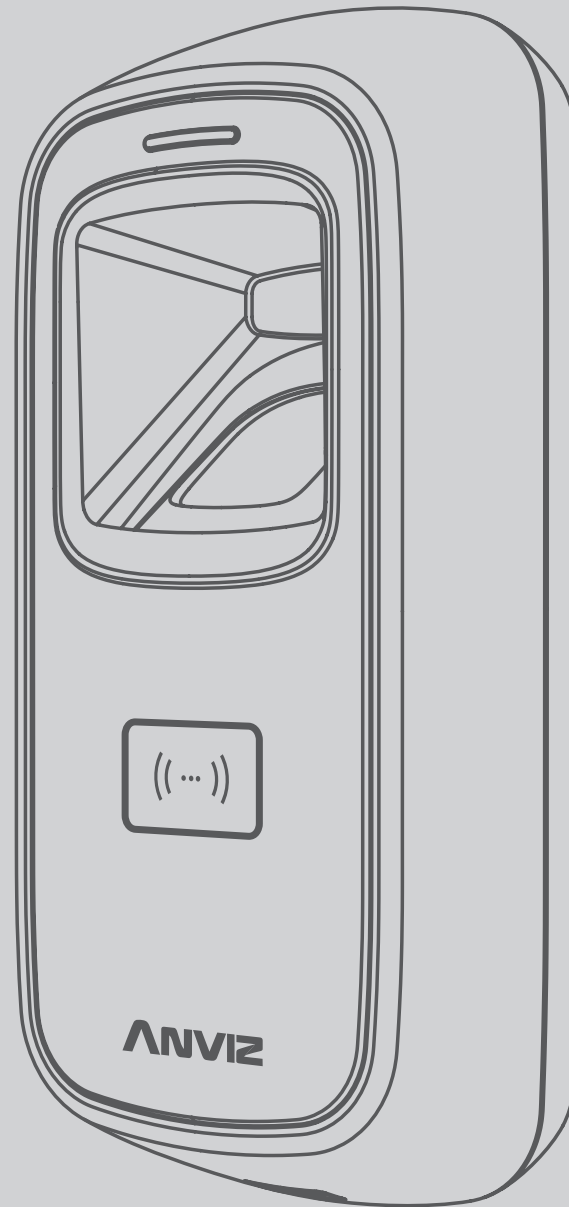


Shanghai Anviz Technology Co.,Ltd.

# M5

Outdoor Fingerprint RFID  
Access Controller

## Quick Guide V1.4



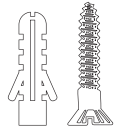
**ANVIZ**<sup>®</sup>  
Intelligent . Security

For more information, visit [www.anviz.com](http://www.anviz.com), or email us [press@anviz.com](mailto:press@anviz.com).  
2016 © Anviz Global. All Rights Reserved.

## Package List



M5

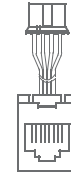


X2

Screws



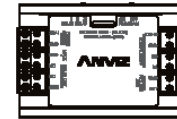
X1



RJ45



USB



SC011



X4




ID Card



Quick Guide



CD

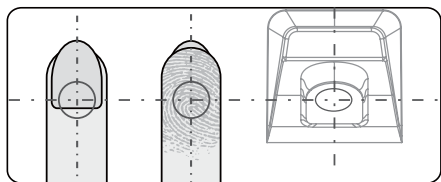
There are 4 cards in the package:  
Enroll Card  Delete Card  User Card  \* 2.

### Note:

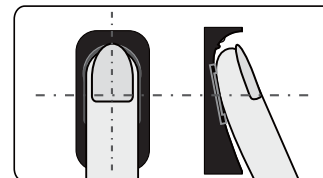
1. Please check if the package contains all the items listed above. Contact the distributor if there is any problem.
2. Please keep the product away from the magnetic field, and avoid causing any damage to the device.
3. Please use the original power supply or refer to the instruction to get the right power supply.
4. Please strictly follow the instructions to install the product. Any damage to it caused by incorrect operation and wiring are not under warranty.

## Illustration for placing finger

- **Correct method** (Straighten your finger and then place it on the sensor. Ensure the finger is flat and covers the entire sensor window)

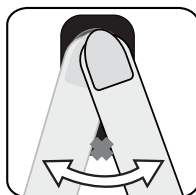


Always place finger in the center of the sensor.

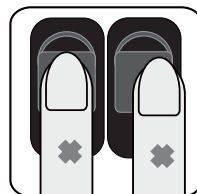


Try to place your finger covers the entire sensor window.

- **Incorrect method**



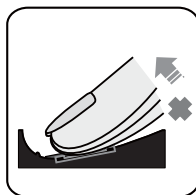
DO NOT move your finger before the backlight of sensor turns off.



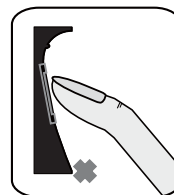
DO NOT place finger away from the center of the sensor window.



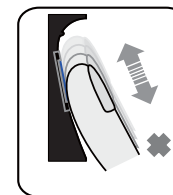
DO NOT place finger at an angle.



DO NOT take off finger during the fingerprint verification process.



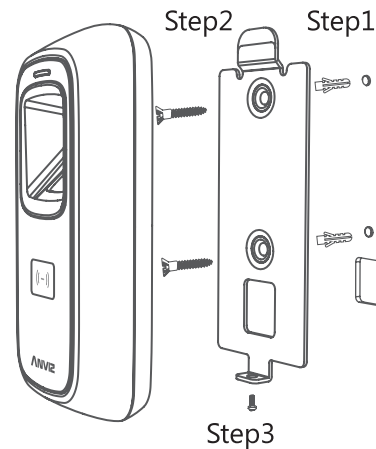
DO NOT just use your fingertip.



DO NOT slide your finger during the fingerprint verification process.

## Installation Diagram

### Back panel install way:



### Steps:

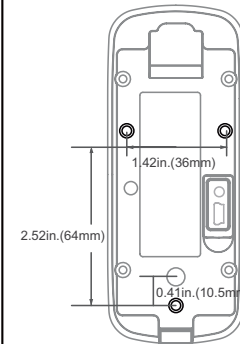
**Step1:** Drill holes in the wall follow the hole position on back panel.

**Step2:** Install and fix back panel, connect related cables.

**Step3:** Place M5 on back panel, fix screw at the bottom of M5.

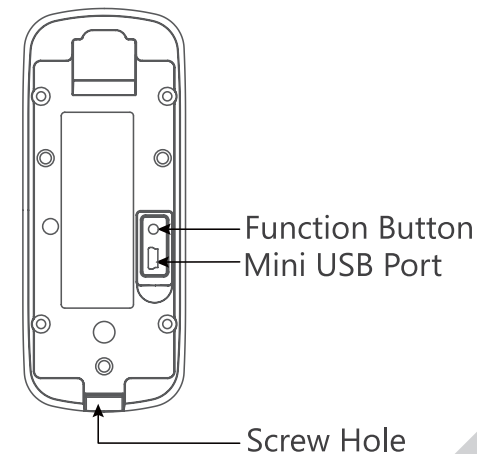
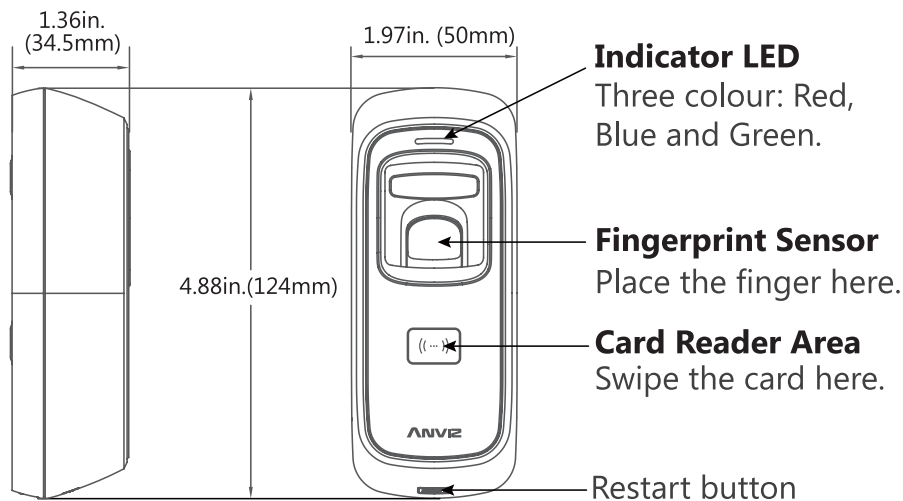
### Without back panel install way:

### Steps:

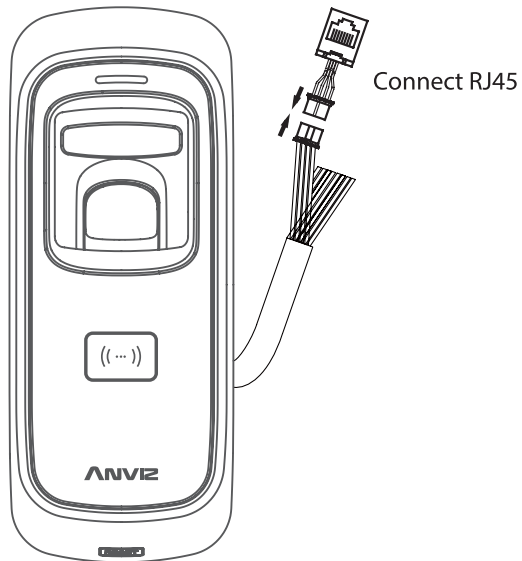


Behind the wall fix M4 screws directly to the bottom shell, the depth of screws is 8mm. This install method is unique, safe and convenient. Package list has no these screws, according to wall thickness select the length of M4 screws.

## Appearance



# Wiring Instruction

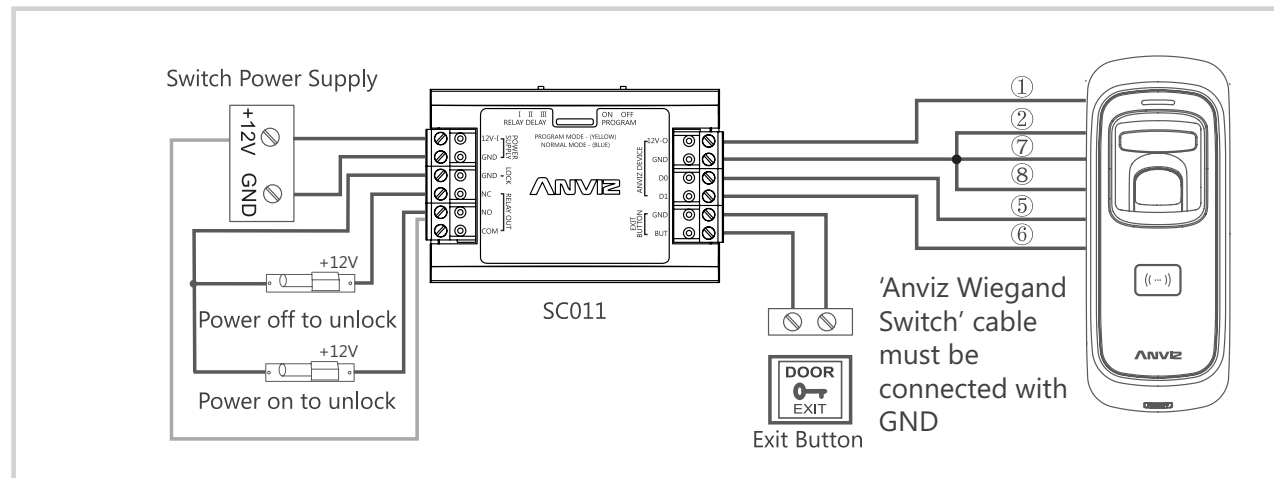


Function	No.	Cable Color	Description
Power	①	Red (Heavy Line)	DC12V
	②	Black (Heavy Line)	GND
Tamper alarm (Dry contact output signal, do not connect with electric equipment)	③	Brown	Tamper alarm
	④	Orange	Tamper alarm
Wiegand Output	⑤	Green	Wiegand DATA0 Output
	⑥	White	Wiegand DATA1 Output
	⑦	Blue	Anviz Wiegand Switch
	⑧	Black	GND
Pulse signal	⑨	Light Brown	RS485B/GND
	⑩	Light Blue	RS485A/Pulse signal (3.3V)

## Important notice:

Please carefully follow this wiring instruction. Any damage caused by incorrect wiring is not covered by warranty.

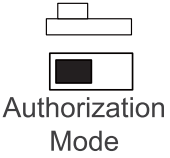

## Anviz Wiegand Wiring:



## SC011 authorization setting:

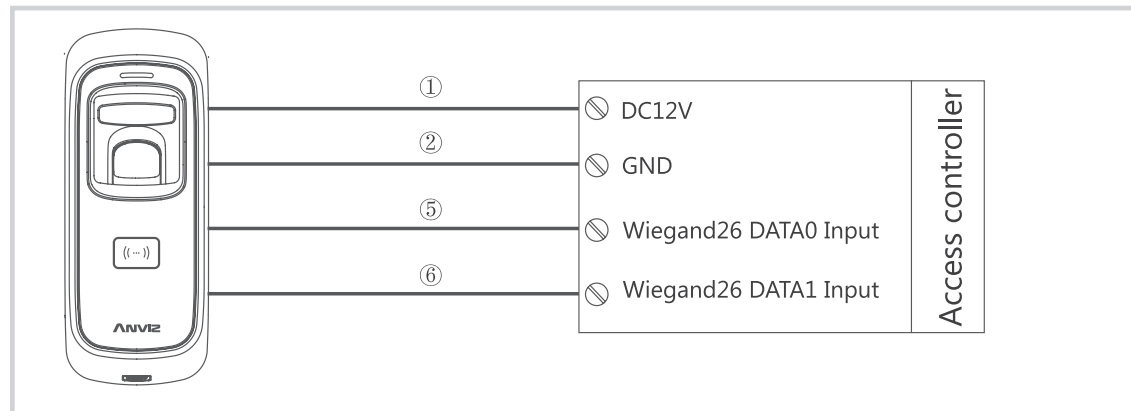
Make sure correct wiring between M5 and SC011, power on them, then move slide switch to 'PROGRAM MODE' as below:

Switch in 'PROGRAM MODE' on the SC011: Move slide switch to left(ON).

 Authorization Mode	 Power On: LED LED Yellow light	Match registered fingerprint or swipe registered card on M5, then SC011 will beep once, means authorized successfully. Then move slide switch to right(OFF).
---	---	--

## Wiegand 26 Wiring:

Let the 'Anviz Wiegand Switch' cable is not connected to the GND and make sure correct wiring between M5 and Anviz SAC844 or other Access Controller as below:



## Wiegand date output format:

### ① Anviz Wiegand date output format:

ALL registered users output devices' last eight serial number.(For example, SN of one device is 1050000014470004, then Anviz Wiegand output 14470004.)

### ② Wiegand 26 date output format:

Card user: Output card number.(Decimal)

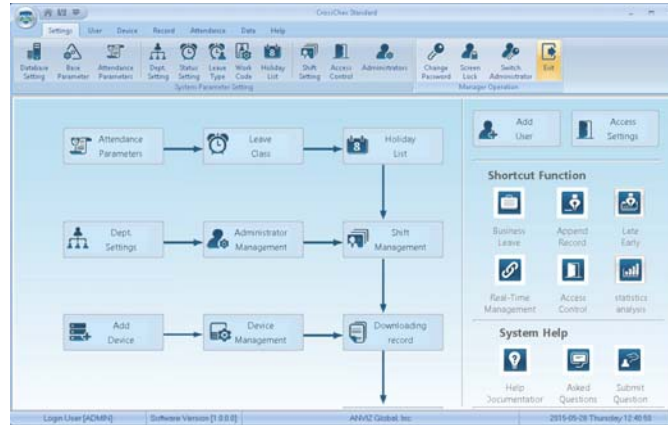
Fingerprint user: Output ID number.

③ Wiegand output format can't set by PC software and even if you have set it's invalid, just exchange the 'Anviz Wiegand Switch' wiring.

# Working with Management Software

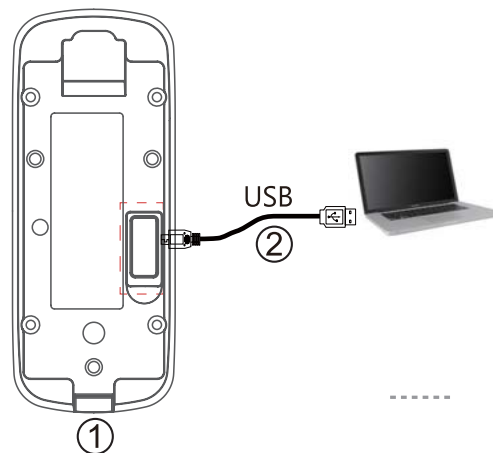
## 1. Install the Management Software on Computer

Put the CD in the management computer. The installation program will run automatically.



## How to connect M5 with Software?

### 1st Method: Mini USB



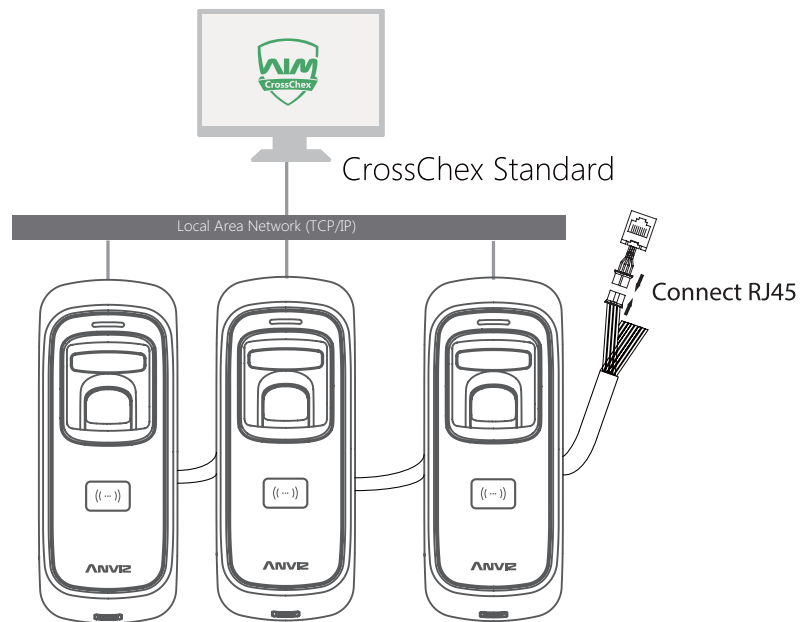
- ① Loose the screw on the bottom of M5, then pull up the front case, separate from back panel
- ② Connect USB cable between with M5 and PC which has installed software

Pay attention:

If management cards are registered, indicator light turns yellow and flashes. You must verify any management card first.

If no management card is registered, you can communicate with M5 directly.


## 2nd Method: Connect M5 to Network



Set the terminal's IP configuration

Set the terminal's IP configuration	
<input checked="" type="checkbox"/> IP address:	192.168.20.121
<input checked="" type="checkbox"/> Default gateway:	192.168.20.1
<input checked="" type="checkbox"/> Sub mask:	255.255.255.0
<input checked="" type="checkbox"/> MAC address:	84-C2-E4-F1-18-8C
<input checked="" type="checkbox"/> Server IP address:	192.168.20.215
<input checked="" type="checkbox"/> Work mode:	Server
<input checked="" type="checkbox"/> IP port:	5010

OK Cancel

Right click on the device icon  and choose 'Set the IP configuration' to set correct network environment parameters such as above window.

### 2. Enable Communication between M5 and the Management Software CrossChex

- \*Turn on management software CrossChex
- \*Go to Device tab. Search and Add the M5 to management software CrossChex
- \*Click Synchronize Time button to communicate with M5. If Synchronize is successful, the device icon will turn to blue.

### 3. The Management Software CrossChex Features

- \*Device\Backup User: Download user info from M5 to CrossChex
- \*Device\Download Records: Download records from M5 to CrossChex
- \*User\Modify: Edit name or other user info. Then click 'Upload User' to Upload user info to M5 device

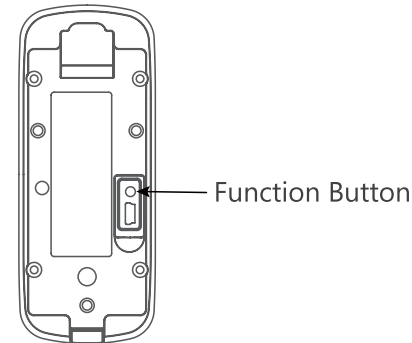


- \*Record\Search: Search and view the records
- \*Attendance: Calculate, Search results and Generate reports
- \*Data\Backup Database: Backup Database
- \*Setting\Shift: Set up Time Table and Scheduling
- \*Device\Device Parameter: Set up device, Clear records on M5 or Reset M5 to factory settings

## Function Button

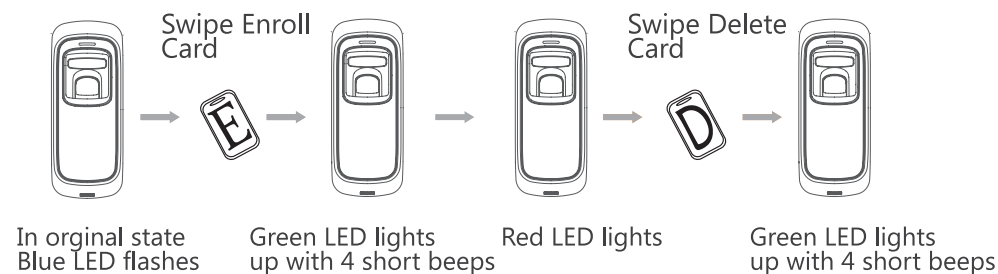
Press function button until you hear beeps which means the information of Enroll Card and Delete Card have been eliminated in the device.

**Notice:** The operation will not delete user data stored in the device.



After that, you MUST register management cards (Enroll Card and Delete Card) to run the machine.

### ▪ Register Management Cards (Enroll Card and Delete Card)



# Operation Guide

## ■ IMPORTANT:

M5 is suitable for vehicle with DC12V power supply only. When connect to DC12V power supply, the indicator light displays blue and flashes fast. Meanwhile, the backlights of fingerprint sensor turn on with beeps.

## ■ Register User:

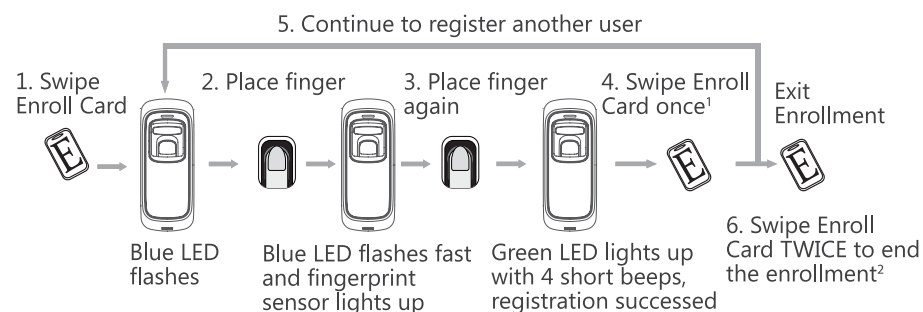
### ● Add One Fingerprint per User Only:

Note: 1. After finish enrolling current user, please swipe enroll card and then continue register another user.

2. After finish enrollment, please swipe enroll card TWICE to exit enroll status.

#### Notice:

When you place finger on M5, Red LED flashing with two long beeps means the finger has been registered.



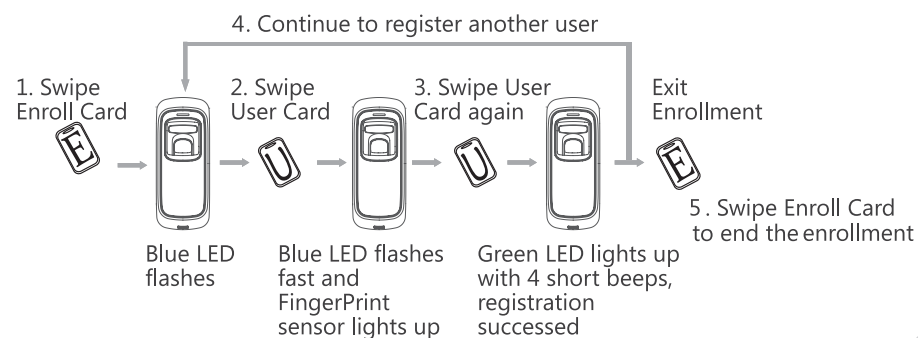
### ● Add Card Only:

Note: 1. After finish enrolling current user, please swipe another user card to continue register another user.

2. After finish enrollment, please swipe enroll card ONCE to exit enroll status.

#### Notice:

When you swipe card on M5, Red LED flashing with two long beeps means the card has been registered.



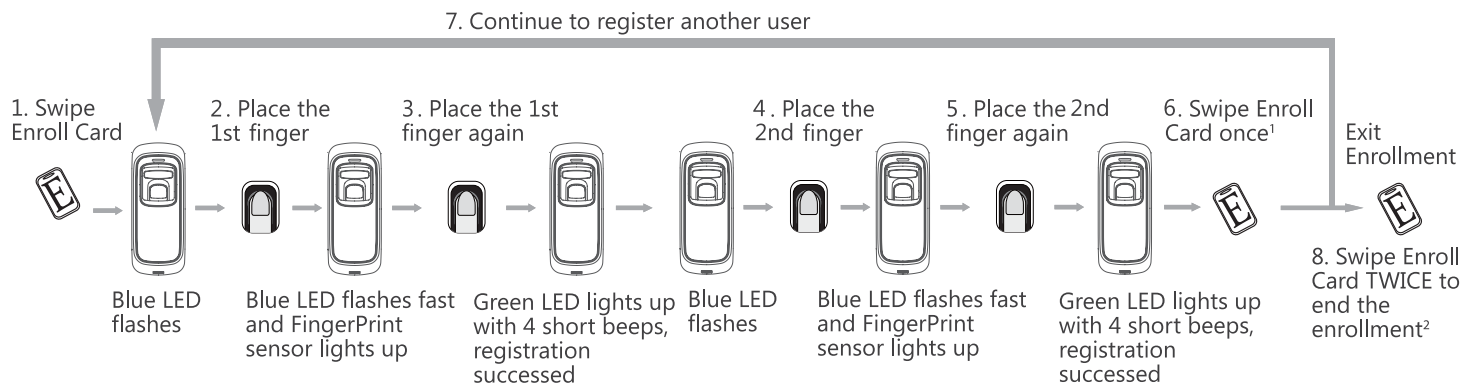
# Operation Guide

## • Add Two Fingerprints of one User:

\* Two fingerprints belongs to one user ID.

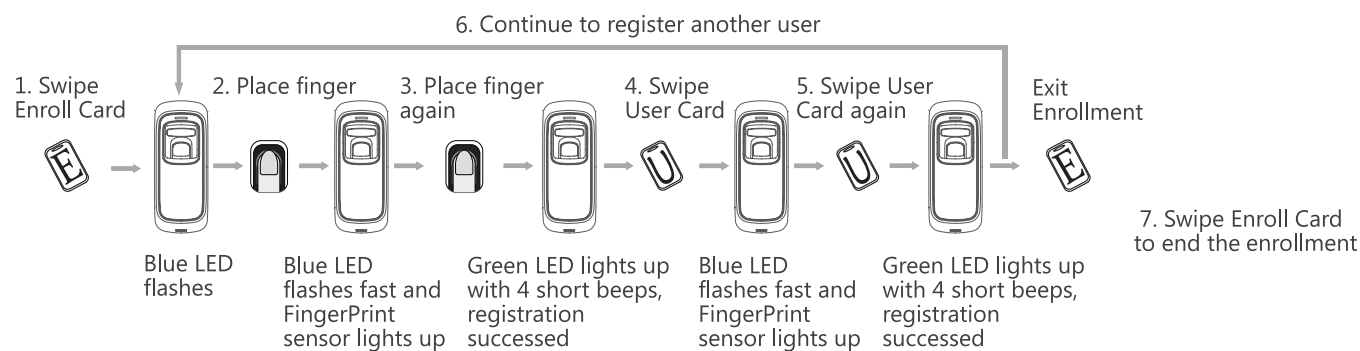
Note: 1. After finish enrolling current user, please swipe enroll card and then continue register another user.

2. After finish enrollment, please swipe enroll card TWICE to exit enroll status.



## • Add Fingerprint and Card of one User:

\* The wiegand output of fingerprint and card are the same.



Note:

1. After finish enrolling current user, please swipe enroll card and then continue register another user.

2. After finish enrollment, please swipe enroll card TWICE to exit enroll status.

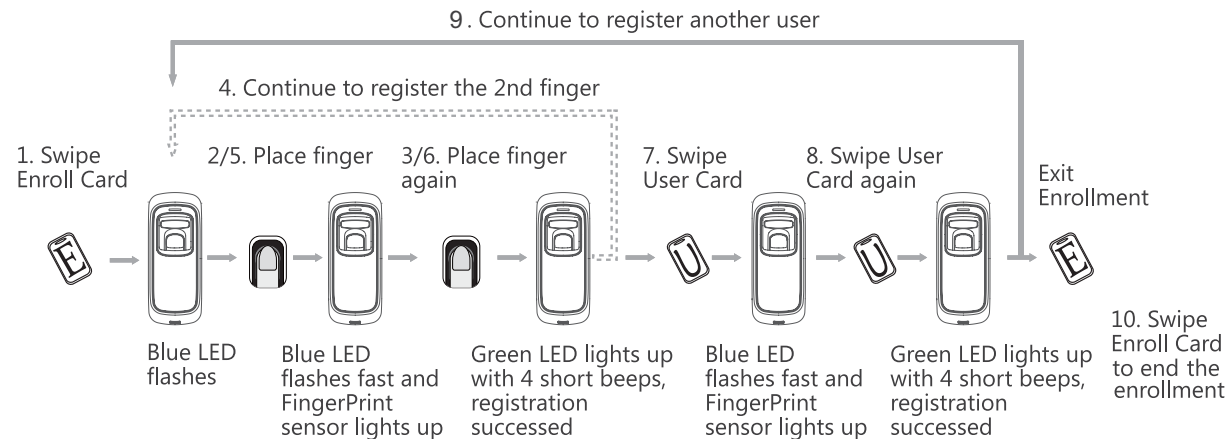
# Operation Guide

- **Add Two Fingerprints and Card of one User:**

\* The wiegand output of fingerprint and card are the same.

Note: 1. After finish enrolling current user, please register another user's fingerprints and card directly as follow.

2. After finish enrollment, please swipe enroll card to exit enroll status.



# Operation Guide

- **Delete User:**

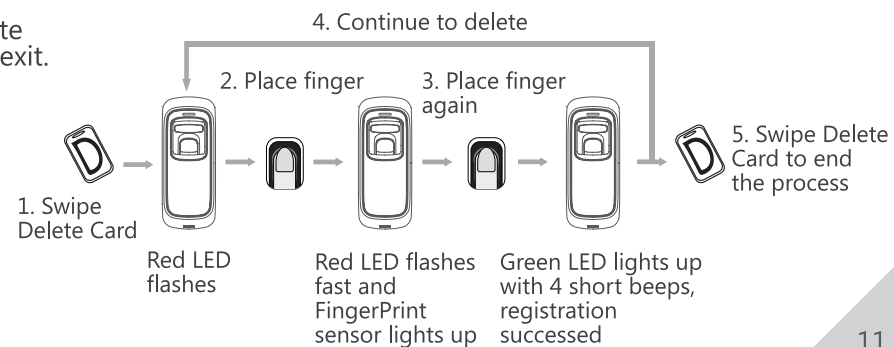
- **Delete Fingerprint or Fingerprint and Card**

After delete one user, you can continue to delete another user or swipe Delete Card to save and exit.

When fingerprints or card belong to one user ID, you can delete either one to delete this user.

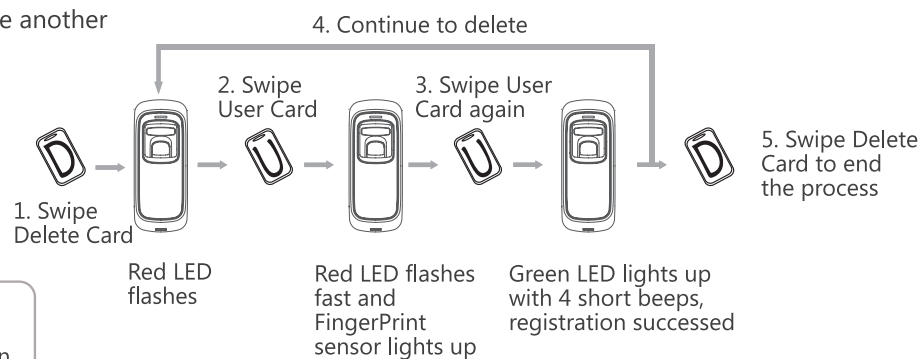
**Notice:**

When you place finger on M5, Red LED flashing with long beeps means the fingerprint does not exist in the device.



- **Delete Card:**

After delete one user, you can continue delete another user or swipe Delete Card to save and exit.



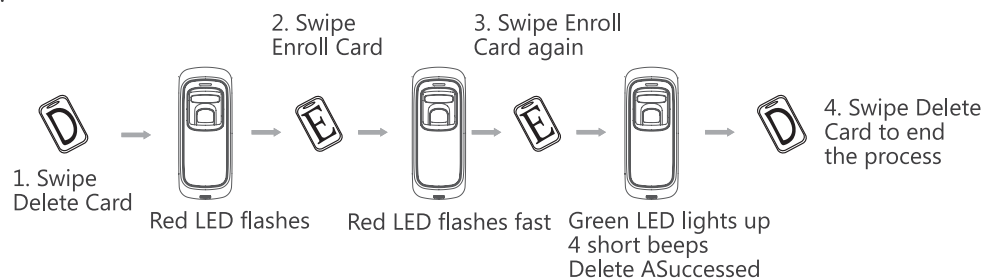
**Notice:**

When you swipe card on M5, Red LED flashing with long beeps means the card does not exist in the device.

## Operation Guide

- **Delete All Users**

Delete all uses fingerprints and cards, the device parameter setting do not change.



Have a question? Please feel free to send emails to [support@anviz.com](mailto:support@anviz.com) to get support.



## About Anviz

Founded in 2001, Anviz is a global leader in the field of intelligent security including Biometric, RFID and Surveillance. Cutting edge R&D, ISO certified manufacturing and global brand recognition provide our partners with the fast track to success!

Anviz is at the forefront of biometric, RFID, and surveillance technologies. Through constant R&D, ISO certified manufacturing and global brand recognition, Anviz is an industry leader. Producing high-quality, cost-effective security solutions have helped amass a global client base of over 60 million customers in over 100 countries.

For more information, visit [www.anviz.com](http://www.anviz.com), or email us [press@anviz.com](mailto:press@anviz.com)

2016 © Anviz Global. All Rights Reserved. Due to the consistent improving of the product, this specification and appearance is subject to change without notice.

This equipment has been tested and found to comply with the limits for a Class B digital device, pursuant to part 15 of the FCC Rules. These limits are designed to provide reasonable protection against harmful interference in a residential installation. This equipment generates, uses and can radiate radio frequency energy and, if not installed and used in accordance with the instructions, may cause harmful interference to radio communications. However, there is no guarantee that interference will not occur in a particular installation. If this equipment does cause harmful interference to radio or television reception, which can be determined by turning the equipment off and on, the user is encouraged to try to correct the interference by one or more of the following measures:

- Reorient or relocate the receiving antenna.
- Increase the separation between the equipment and receiver.
- Connect the equipment into an outlet on a circuit different from that to which the receiver is connected.
- Consult the dealer or an experienced radio/TV technician for help.

Caution: Any changes or modifications to this device not explicitly approved by manufacturer could void your authority to operate this equipment.

This device complies with part 15 of the FCC Rules. Operation is subject to the following two conditions: (1) This device may not cause harmful interference, and (2) this device must accept any interference received, including interference that may cause undesired operation.

The device has been evaluated to meet general RF exposure requirement.

Company: U-tec Group Inc.

Address: 44292 Fremont Blvd, Fremont, CA 94538

Name: Kevin Zhu

Position: Product Manager

Tel: 844-439-8832

Fax: 844-439-8832

Email: [kevin@u-tec.com](mailto:kevin@u-tec.com)

Web: [www.u-tec.com](http://www.u-tec.com)