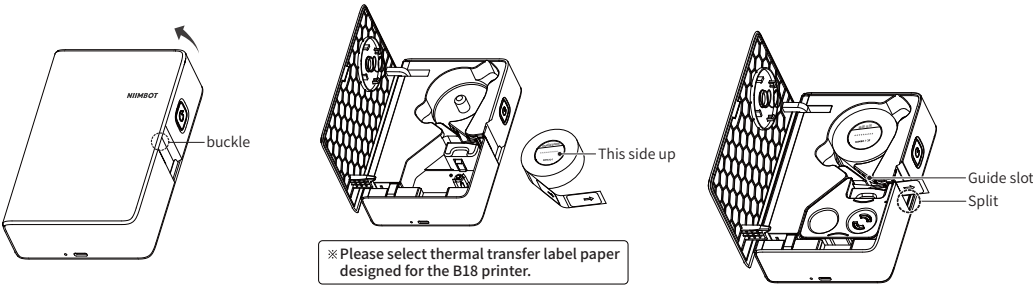


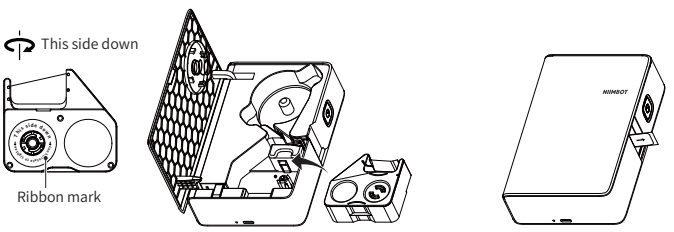
Quick Installation

01. Label installation



- 1 Pull the buckle up to open the cover.
- 2 Insert a label roll with the chip facing up.
- 3 Align and pull gently the label paper out of the guide slot until the split after the first label.

※ Please select thermal transfer label paper designed for the B18 printer.



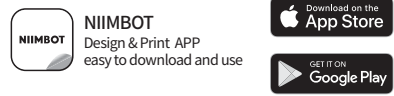
- 4 Tighten the tape counterclockwise as indicated, then load the chip face down in the card slot.
- 5 Close and buckle the cover.

Packing List	
	1 × B18 Label Printer
	1 × Label paper
	1 × USB TYPE-C Data Cable
	1 × Quick-Reference Guide

APP Download

02. How to Download the APP

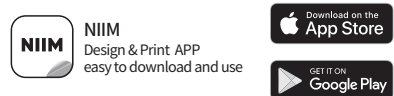
1 Search for "NIIMBOT" on the Google play or Apple store, download and install the APP.



※ Please check the APP for more instructions.

Open the NIIMBOT APP ▶ Me ▶ Help Center ▶ Hardware Instructions

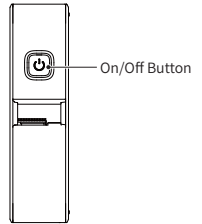
2 For more functions used in home application, our APP "NIIM" is recommended to download and install.



APP connection

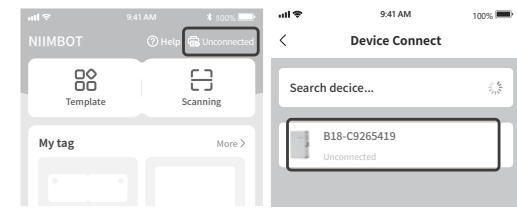
03. How to Connect via Bluetooth

1 Power on.



Press and hold the "On/Off" button to turn on the device

2 Press [Unconnected] in the upper right corner of the APP homepage, it will search the powered on devices nearby and show as below, connect devices with the correct models.



Note: If needed, the PIN code is generally 0000 or 1234. Enter the PIN code and press "OK".

Related statements

FCC Statement

This device complies with part 15 of the FCC Rules. Operation is subject to the following two conditions: (1) this device may not cause harmful interference, and (2) this device must accept any interference received, including interference that may cause undesired operation.

Any changes or modifications not expressly approved by the party responsible for compliance could void the user's authority to operate the equipment.

NOTE: This equipment has been tested and found to comply with the limits for a Class B digital device, pursuant to Part 15 of the FCC Rules. These limits are designed to provide reasonable protection against harmful interference in a residential installation. This equipment generates, uses and can radiate radio frequency energy and, if not installed and used in accordance with the instructions, may cause harmful interference to radio communications.

However, there is no guarantee that interference will not occur in a particular installation. If this equipment does cause harmful interference to radio or television reception, which can be determined by turning the equipment off and on, the user is encouraged to try to correct the interference by one or more of the following measures:

- Reorient or relocate the receiving antenna.
- Increase the separation between the equipment and receiver.
- Connect the equipment into an outlet on a circuit different from that to which the receiver is connected.
- Consult the dealer or an experienced radio/TV technician for help.

The device has been evaluated to meet general RF exposure requirement. The device can be used in portable exposure condition without restriction.

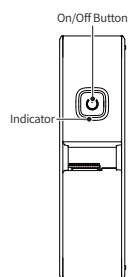
Declaration of conformity

Hereby, Wuhan Jingchen Intelligent Identification Technology Co., Ltd. declares that this device is in compliance with the essential requirements and other relevant provisions of Radio Equipment Directive (RED) 2014/53/EU. This product can be used across EU member states. This device can be used in European Union.

Hereby, [Wuhan Jingchen Intelligent Identification Technology Co., Ltd.] declares that the radio equipment type [B18] is in compliance with Directive 2014/53/EU.

The full text of the EU declaration of conformity is available at the following internet address: <http://www.niimbot.com>.

Basic usage



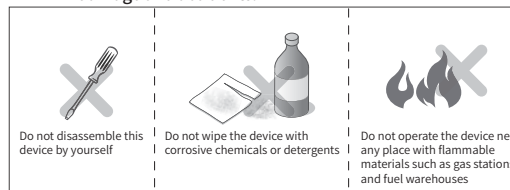
- 1 On**
When the printer is off, press and hold the "On/Off" button for three seconds, and the printer will make a buzzing sound and turn on.
- 2 Off**
When the printer is on, press and hold the "On/Off" button for three seconds, and the printer will make a buzzing sound and turn off.
- 3 Print History**
When the printer is on, press the "On/Off" button once to show the latest print records. If there are no records, one label will be automatically fed.

Indicator		
Indicator	Status	Description
Blue	Slow stroboflash	Bluetooth not connected
Blue	Fast stroboflash	Printing
Blue	On	Bluetooth Connected
Red	On	Low battery

Product Parameters			
Model	NIIMBOT B18	Battery capacity	1200mAh
Printing mode	Thermal transfer	Input voltage/current	5V~1A
Printing accuracy	203dpi	Charging interface	Type-C
Printing speed	20mm/s~50mm/s	Operating frequency	2402-2480MHz
Effective print width	12mm	Output power	-1.76dBm(0.0007W)
Connection mode	Bluetooth	Operating temperature	5°C-45°C

Warning and Attention

! Please read these warnings carefully before use to avoid damage and accidents.



- Please keep the device and accessories safe and out of reach of children to avoid risks.
- If any water makes contact with the device, please turn it off immediately.
- Please turn off the device immediately in case of any fault in operation.
- Do not touch the print head after prolonged and continuous printing to avoid scalding due to high temperature.

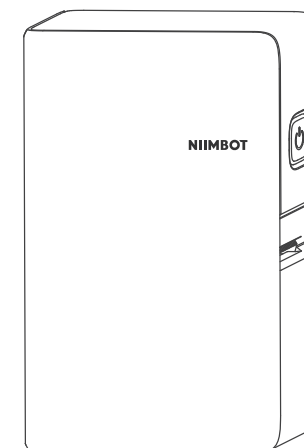
Attention

1. When the printer is running, do not open the paper bin cover.
2. When charging, keep the printer and power adapter at room temperature with good ventilation.
3. Excessively high or low temperature may damage print quality.
4. If the printer is stored for a long period of time, please recharge it every three months. If it is not recharged, the battery may fail or even leak liquid, damaging the printer.
5. If the battery fails to meet the performance requirements, please stop using it immediately and contact the customer service center for processing.
6. Please use NIIMBOT label paper to avoid poor printing quality or even damage to the print head.
7. In case of any problem during operation, please feel free to contact the dealer or customer service center. NIIMBOT aims to provide the best after-sales services for customers all over the world!

NIIMBOT

Label Printer Quick-Reference Guide

NIIMBOT B18



Wuhan Jingchen Intelligent Identification Technology Co., Ltd.
FCC ID: 2ARXB-B18

Support Email : service@niimbot.com

Official Website : www.niimbot.net

Address : Creative Workshop No. 5, Creative World, Yezhihu West Road, Hongshan District, Wuhan