

---

# Lighting product instructions for use

FCC ID: 2ARWQLACWACCT9W

Model Name: LAC-WiFi-A60-CCT-9W

## Page 1: home page manufacturer logo design

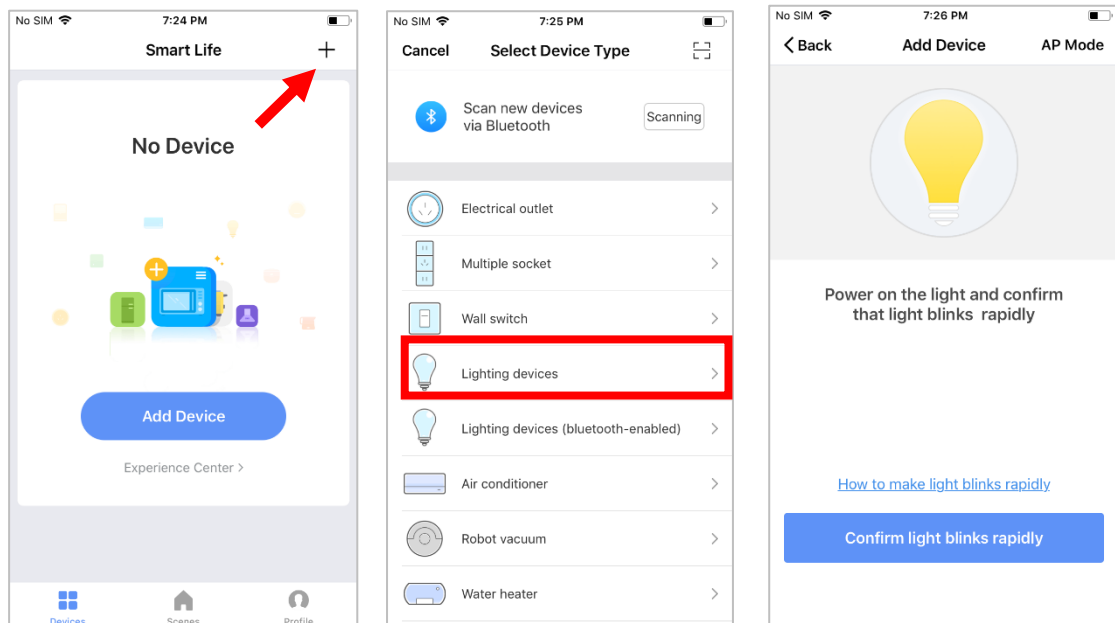
### Page 2: Preparation for use

1. Power on the bulb while ensuring that the phone is connected to the 2.4 GHz Wi-Fi network;
2. Download and open up the app:  
Search for "Smart Life" in the App Store or scan the QR code on the package/manual to download and install the app;  
Please click the "Register" button to register if you download it for the first time.  
If you already have an account, click the "Login" button.



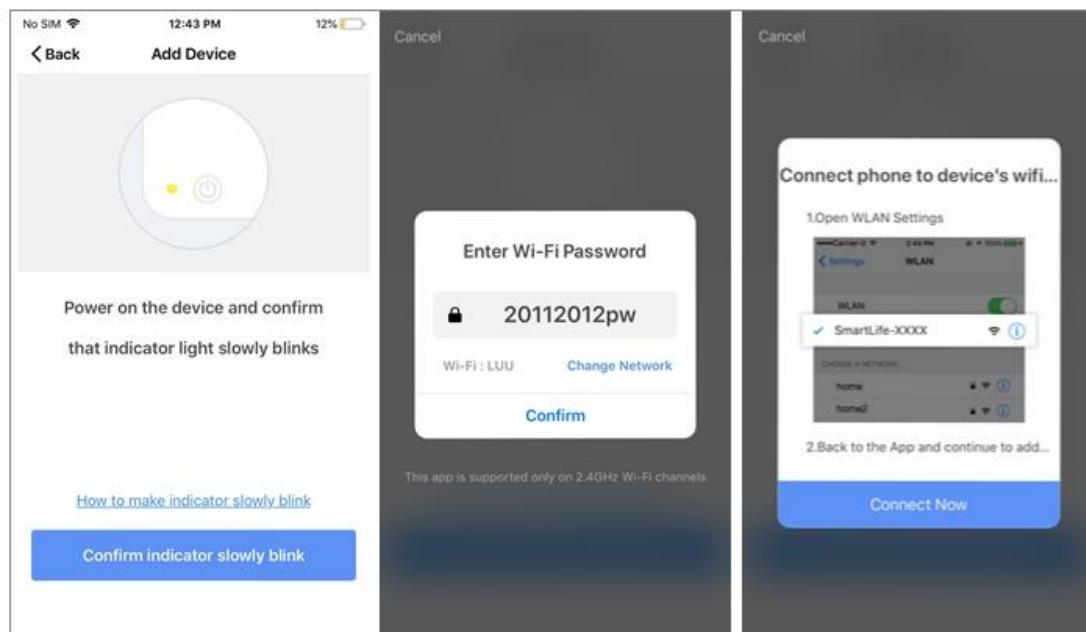
### Page 3: Device Network configuration

1. Open up the smart life app "Devices" page, click the "+" on the upper right corner of the page;
2. Select "Lighting devices" on the device list page;
3. There are two config mode: EZ mode and AP mode
  - 1) EZ Mode  
Ensure the light flashing quickly (twice a second) which indicates that the device is in config mode which allows you to connect.  
Please press the lamp switch by 3 times (on-off-on-off-on) , stay in the open state ,till the light flashing quickly. Click the "Confirm Light blinks rapidly" button on the page to start configuration.



## 2) AP Mode

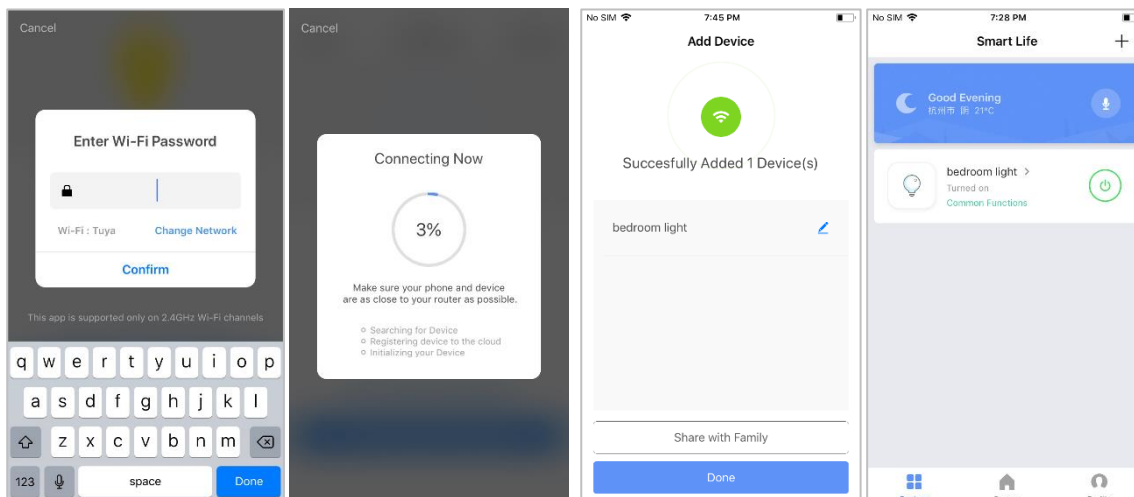
Click the "AP Mode" in the upper right corner. After the indicator light flashes slowly, click the confirmation button on the page to connect to a 2.4G network. Then click "Connect Now" to connect to the hotspot of the device "SmartLife\_XXXX" .



## Page 4: Network access settings

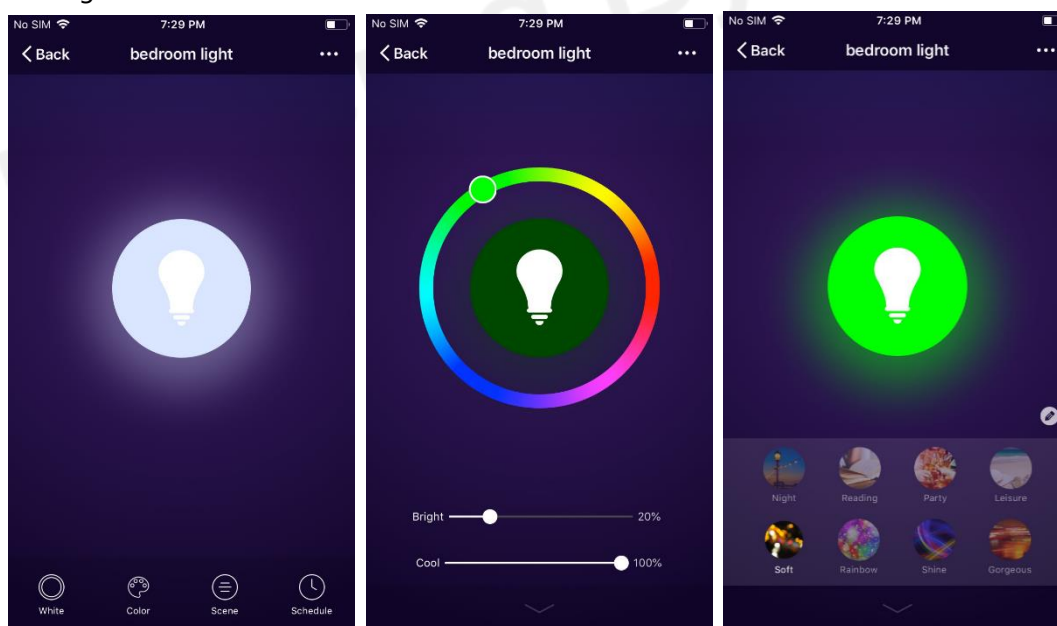
1. Input the WIFI password, pay attention to connect 2.4G network environment, temporarily do not support 5G network;

## 2. You can see the light bulb on the "Devices" page after setting up successfully



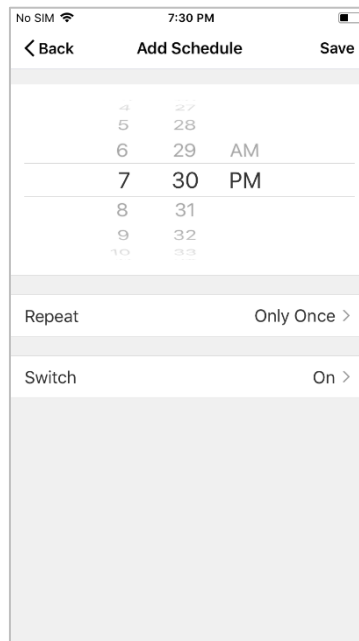
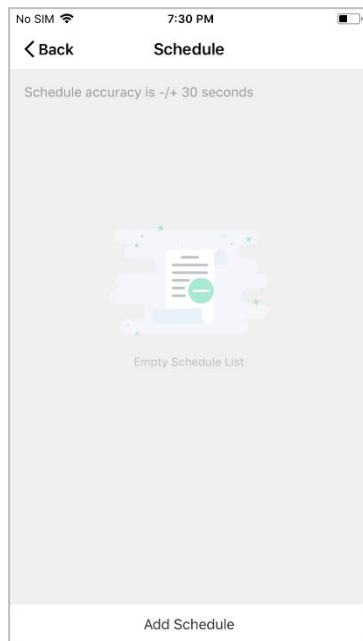
### Page 5: Control devices

1. Open the light control page. If it is off, only the "Schedule" function will be displayed below. When light up, the complete function will be displayed at the bottom, as shown in Figure 1;
2. Click on "Color", you can manually adjust the brightness and color temperature of the light, as shown in Figure 2;
3. Click on the "Scene", you can choose the lighting mode under different scenes, as shown in Figure 3.

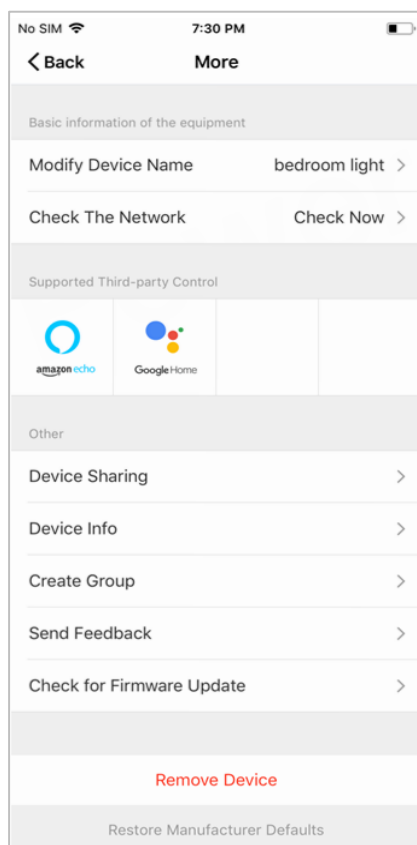


### Page 6: "Schedule" settings

On the schedule page, you can add different schedules and cycle times. This feature is similar to an alarm clock. It can wake you up in the morning and accompany you to sleep at night to enjoy a healthy lifestyle.



## Page 7: More Pages



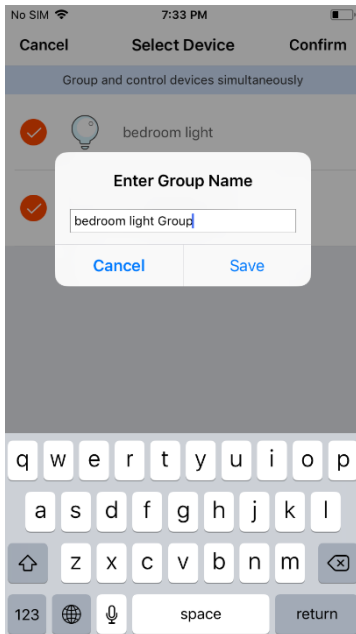
Click the "..." button in the upper right corner of the lamp control page to enter the "More" page

1. Device Sharing : Input the phone number which has registered for "Smart Life" to share the devices with friends and family;
2. Device Info: You can check: device ID, Wifi signal strength, IP address, Mac address and device time zone in here;
3. Create Group : The page will automatically display the added device with the same model after clicking it, different models cannot be created to a group.
4. Send Feedback: If the device encountered any issues, you can submit it here;
5. Check for Firmware Update: You can check whether there is firmware that needs to be updated
6. Remove Device: If the device is no longer in use or offline, you can click to remove it and add it again.

## Page 8: Create Group

Click "Create Group", devices that have been added and have the same model number will be

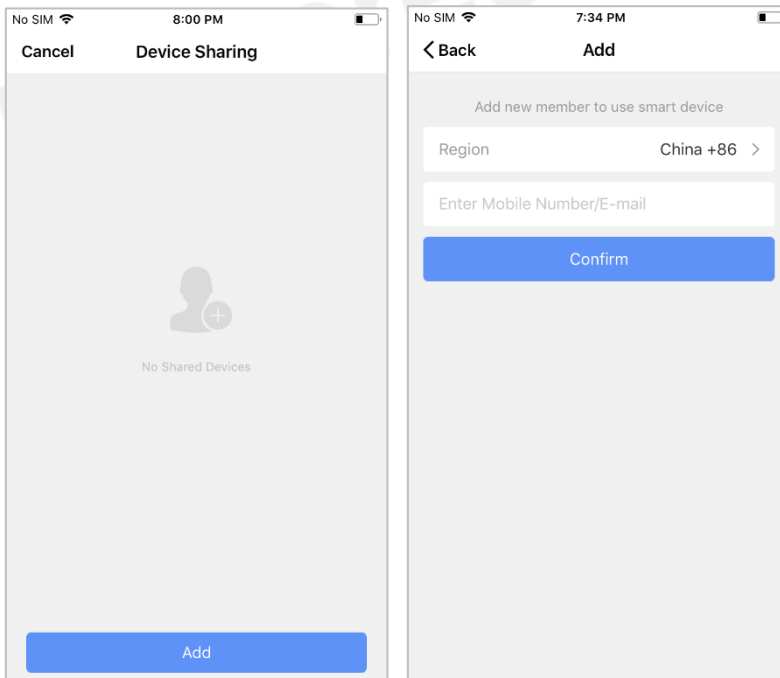
displayed on the page, after selecting the devices that you want to create a group, click on "Confirm" in the upper right corner to save the group name.



### Page 9: Device Sharing

Click "Add", enter the phone number or email which you want to share, then click "Confirm" to complete sharing.

Note: You must have registered Smart Life then can be shared successfully.



FCC Caution.

This device complies with part 15 of the FCC Rules. Operation is subject to the following two conditions:

- (1) This device may not cause harmful interference, and
- (2) this device must accept any interference received, including interference that may cause undesired operation.

Any Changes or modifications not expressly approved by the party responsible for compliance could void the user's authority to operate the equipment.

Note: This equipment has been tested and found to comply with the limits for a Class B digital device, pursuant to part 15 of the FCC Rules. These limits are designed to provide reasonable protection against harmful interference in a residential installation. This equipment generates uses and can radiate radio frequency energy and, if not installed and used in accordance with the instructions, may cause harmful interference to radio communications. However, there is no guarantee that interference will not occur in a particular installation. If this equipment does cause harmful interference to radio or television reception, which can be determined by turning the equipment off and on, the user is encouraged to try to correct the interference by one or more of the following measures:

- Reorient or relocate the receiving antenna.
- Increase the separation between the equipment and receiver.
- Connect the equipment into an outlet on a circuit different from that to which the receiver is connected.
- Consult the dealer or an experienced radio/TV technician for help.

This equipment complies with FCC radiation exposure limits set forth for an uncontrolled environment. This equipment should be installed and operated with minimum distance 20cm between the radiator & your body.