

## SMART CAMERA INSTRUCTION MANUAL SGT-G14

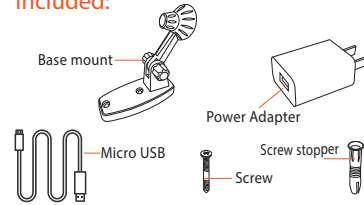


SGT

### Product configuration



### Included:



### Specifications

Product Size: 88\*88\*101mm  
Lens: 3.6mm diameter with 110 degree wide angle,  
2-way audio, motion detection & alarm  
Resolution: 1920\*1080P  
Video Compression: H.264 High profile  
local storage: TF card 64G(Max)  
(32GB TF card will save approximately one week) of  
video  
Platform: Android / iOS  
Total power consumption: 3.5W( MAX),  
Power input: 5V 1A

### Reset:

(1) Press and hold the reset button for 6 seconds, there will be a voice prompt saying "Reset camera successfully".

### Download App

**\*\*Before setup, make sure your mobile device is connected to a wifi (2.4GHz network)\*\***

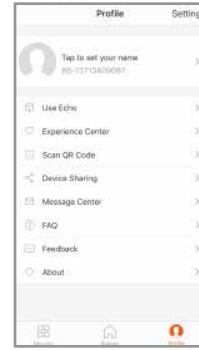
1. Android device:  
Download "Tuya Smart" from Google play store
2. iOS device:  
Download "Tuya Smart" from APP store.



TuyaSmart

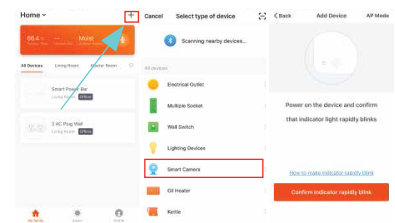
### Register and login

1. Open the Tuya Smart app and set up an account unique and personal to you and follow prompts within the app.



### Add Device

1. Plug the provided usb cable into the charging port of the camera.
2. After 30 seconds the camera will prompt "System set up", camera is now ready to be paired.
3. To add a device, select the "+" symbol at the top right of the app home page.
4. Select "Smart Camera".

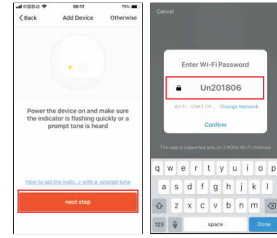


### Connecting the Device

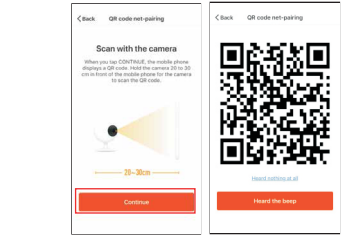
There are 2 methods for connecting the device. Be sure your mobile device is connected to a wifi.

#### Method 1: QR Code

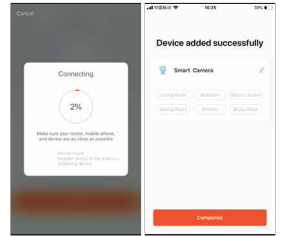
(1) Once device is added and the voice prompt is heard, press "next step" and enter Wifi password.



(2) Scan the QR code displayed with the smart camera, there will be a voice prompt "Succeed in scanning QR code" when successfully scanned.  
(When scanning the QR code, be sure the lens is clear and hold the QR 20-30cm away from the camera lens.)

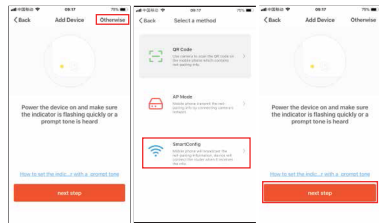


(3) Then click the button "Heard the beep", if connected successfully when you hear the voice prompt "Wifi connected".

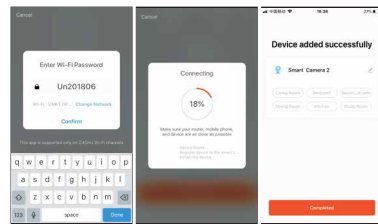


### Method 2: Smart Configuration

- (1) Once device is added and the voice prompt is heard, press "otherwise" found in the top right hand corner.
- (2) Then press "Smart Config" at the bottom of the list.
- (3) Once selected press "Next step"

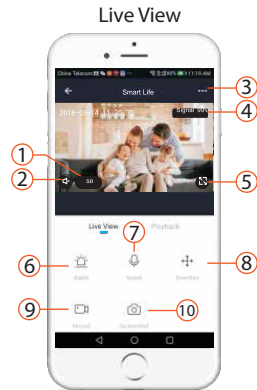


- (4) Enter your Wifi password and press "Confirm".
- (5) Camera is successfully connected when device prompts "Wifi connected".



Reset the camera if failed to connect to the wifi:  
Press and hold the reset button on the camera for 6 seconds, there will be a voice prompt saying "Reset camera successfully". Now follow the connecting steps to connect your device.

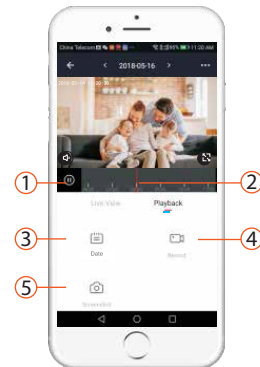
### APP Functions



- |               |             |
|---------------|-------------|
| ① View Mode   | ⑥ Alarm     |
| ② Volume      | ⑦ Speak     |
| ③ Settings    | ⑧ Direction |
| ④ Signal      | ⑨ Record    |
| ⑤ Full Screen | ⑩ Photo     |

- (1) View Mode
  - Switch between Standard Definition and High Definition.
- (2) Volume
  - Turn Volume of the Camera On/Off. Please note sound won't be recorded if the volume is turned off.
- (3) Camera Settings
  - Device Name: Change name of camera
  - Shared Device: Allow other users to access the camera
  - Use Echo: Connect Camera to your Amazon Echo Basis Function Settings: Flip Screen if the camera is mounted on a wall or ceiling.
  - Motion Detection: If motion detection is turned on you will receive alerts when the camera detects motion. The camera will also take a photo. The photos can be seen in the message center of the App.
  - Body Tracking: If body tracking is turned on the camera will follow the motion detected.
  - Memory Card Settings: Turn On TF Card recording for the camera to record video to the TF card. Select non-stop recording for the camera to continuously record video to the TF Card. Once the TF card is full the camera will overwrite the previous recorded video. If event recording is selected the camera will record video when motion is detected.
  - Remove Device: Delete Camera from the App
- (4) Signal
  - Wifi Signal Strength.
- (5) Full Screen
  - Device enters a full screen mode.
- (6) Alarm
  - Turn ON/OFF Motion Detection.
- (7) Speak
  - Speak through the camera using App.
- (8) Direction
  - Change Camera horizontally or vertically
- (9) Record
  - Record Live Video
- (10) Photo
  - Take Live Photo

### Playback Mode



- |                |              |
|----------------|--------------|
| ① Play / Pause | ④ Record     |
| ② History      | ⑤ Screenshot |
| ③ Date         |              |

- (1) Play / Pause
  - Play/Pause recorded data.
- (2) History
  - Fast forward or rewind previous recorded video
- (3) Date
  - Select Date to review recorded video from that day.
- (4) Record
  - Select previous recorded video to save to connected device.
- (5) Screenshot
  - Take a photo of previous recorded film to be saved to connected device.

### Using the Base Tray

(1) The base tray is used to secure the camera to the wall or ceiling, giving you more choices on where you can install your camera.

Please install as shown below:

Step 1:



Step 2:



This equipment has been tested and found to comply with the limits for a Class B digital device, pursuant to part 15 of the FCC Rules. These limits are designed to provide reasonable protection against harmful interference in a residential installation. This equipment generates, uses and can radiate radio frequency energy and, if not installed and used in accordance with the instructions, may cause harmful interference to radio communications. However, there is no guarantee that interference will not occur in a particular installation. If this equipment does cause harmful interference to radio or television reception, which can be determined by turning the equipment off and on, the user is encouraged to try to correct the interference by one or more of the following measures:

- Reorient or relocate the receiving antenna.
- Increase the separation between the equipment and receiver.
- Connect the equipment into an outlet on a circuit different from that to which the receiver is connected.
- Consult the dealer or an experienced radio/TV technician for help.

Caution: Any changes or modifications to this device not explicitly approved by manufacturer could void your authority to operate this equipment.

This device complies with part 15 of the FCC Rules. Operation is subject to the following two conditions: (1) This device may not cause harmful interference, and (2) this device must accept any interference received, including interference that may cause undesired operation.

This equipment complies with FCC radiation exposure limits set forth for an uncontrolled environment.

This equipment should be installed and operated with minimum distance 20cm between the radiator & your body.