

BREATHALYZER

ALCOSCAN

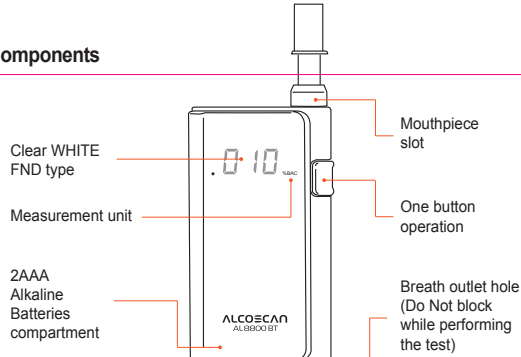
AL8800 BT

AL8800 BT is a sleek and compact designed breathalyzer which can connectable with smartphone app. via Bluetooth BLE function, so possible to manage a data and share by SMS, SNS and e-mail.

Furthermore, it is usable without connecting with smartphone as "Standalone" mode so handy and useful for personal checking.

The enhanced quality check function "Self Diagnosis System (SDS)" on an app. will verify the quality of breathalyzer's sensor and will make sure the accurate and reliable test result.

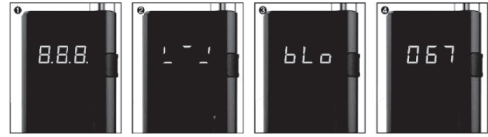
Components



Contents

Breathalyzer, Zipper case, Mouthpieces(x5), AAA Batteries(x2), Outer box, and User's manual

How to use : WITHOUT pairing iSOBER application



1. Press the power button.

*If you keep pressing the power button, a number of testing after calibration will be shown as toggling displaying

*e.g. **000,005** : 6 times tested after calibration

2. Warming up until you can see 'bLo(blow)' sign.

3. Blowing through the mouthpiece into the unit for 4 seconds.

4. The result will be displayed for 10 seconds and shut off automatically.

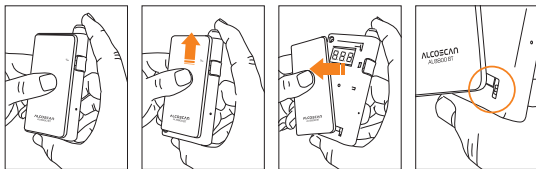
*Passive test operation:

Press the power button once at 'bLo(blow)' status, then result will be displayed as P(PASS) or F(FAIL) according to preset limit value

How to use : WITH pairing iSOBER application

1. Download iSOBER application from the App store or Google play and log in.
2. Turn on Bluetooth mode of your mobile device to be pairing with AL8800 BT unit.
3. Power on your AL8800 BT unit then confirm "APP" showing on the display.
4. Press the test button on an app then unit will be ready to blow status with showing 'bLo(blow)'
5. Blowing through the mouthpiece into the unit for 4 seconds following guides of App.
6. If camera mode is on, camera of your mobile device will take a picture while blowing it.
*If you want to verify your actual alcohol testing, camera mode will be a useful.
7. App. will give you information like test result, test date & time, model of unit, sensor status, GPS location.
8. Also user can leave a comment about testing as well as sharing via SMS, e-Mail and social networking service.
9. Until the unit displaying "APP", user can perform the test in a row using iSOBER application.

How to change batteries



1. Hold the front cover and the main body of unit firmly

2. Push up the front cover

3. Then slide out the front cover and replace batteries

4. Reassemble the front cover in reverse order of disassembly
*Put the bottom hook on to the main body first

Caution

- Please Wait at least 20 minutes after eating or drinking before testing. Alcohol remaining in the mouth, or even excess saliva, may interfere with testing.
This includes alcohol-based mouthwash or similar products.
- Do not blow smoke, saliva or other contaminants into the mouthpiece, as the sensor may get damaged.
- Do NOT use AL8800 BT as a tool to drink and drive.
- Keep out of extreme temperatures and out of the reach of children.
- Please do not use manganese battery. Use alkaline battery ONLY.

Warning Display



The breath sample was not strong enough for measurement. After warming automatically, please blow strong and steady during sampling.



The battery power is low. Please replace the batteries.



If you test over 1,000 tests or 12 months, AL8800 BT will display "CAL" sign. Press the power button once then unit goes to warm up for the test.



Sensor error – Please contact an authorized service center



AL8800 BT is Bluetooth paired with iSOBER application. It will be off in 5 minutes.

Specification

Sensor Type		Fuel Cell sensor
Battery		AAA Size Alkaline Battery 2EA
Weight		83g (Including batteries)
Size (mm)		97.5(Height) X 53.8(Width) X 18(Thickness)
Indication of Test result	Display	0.00 ~ 5.00 g/l
		0.00 ~ 5.00 ‰
		0.00 ~ 0.50 %BAC
		0.00 ~ 2.50 mg/l,
		.000 ~ .500 %BAC (3 decimal point)
		000 ~ 500 mg/100mL
Warming up time		5 sec ~ 120 sec
Time for analysis		Within 5 seconds (at 0.050%BAC, 24°C)
Accuracy		±10% (at 0.050%BAC)
Working / Storage temperature		5°C ~ 40°C / 0°C ~ 50°C
Mouthpiece		MP1000
Calibration interval		Every 1,000 tests or 12 months (whichever comes first)
Certificate		CE RED, FCC, Bluetooth SIG
		BLE 4.2
Additional Feature		Reminder for calibration
		Compatible with mobile application iSOBER

Warranty

The manufacturer warrants the product to be free from defects in workmanship or material (excluding recalibration: recalibration is not covered by warranty) under normal use for TWELVE (12) months from the date of purchase. The manufacturer's obligation under this warranty is limited to replacing, adjusting or repairing the unit if returned along with proof of purchase. This warranty is void if the unit has been tampered with or maliciously damaged.

Recalibration & service

Please contact local distributor

FCC compliance information

THIS DEVICE COMPLIES WITH PART 15 OF THE FCC RULES.

Operation is subject to the following two conditions: (1) This device may not cause harmful interference, and (2) This device must accept any interference received, including interference that may cause undesired operation.

Note: This equipment has been tested and found to comply with the limits for a Class B digital device, pursuant to part 15 of the FCC Rules. These limits are designed to provide reasonable protection against harmful interference in a residential installation. This equipment generates, uses, and can radiate radio frequency energy and, if not installed and used in accordance with the instructions, may cause harmful interference to radio communications. However, there is no guarantee that interference will not occur in a particular installation. If this equipment does cause harmful interference to radio or television reception, which can be determined by turning the equipment off and on, the user is encouraged to try to correct the interference by one or more of the following measures:

- Reorient or relocate the receiving antenna.
- Increase the separation between the equipment and receiver.
- Connect the equipment into an outlet on a circuit different from that to which the receiver is connected.
- Consult the dealer or an experienced radio/TV technician for help.

Modifications not expressly approved by the manufacturer may void the user's authority to operate the equipment under FCC rules.