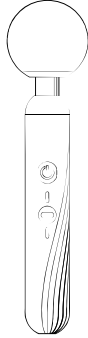


APP Control Mode

① Schematic diagram



② On



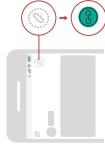
③ Turn on Bluetooth



④ Open APP

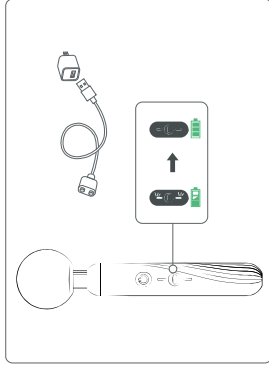


⑤ Connect to Device

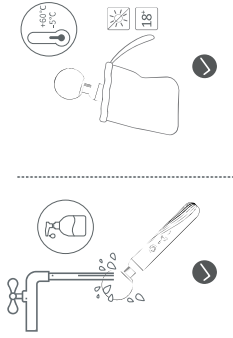


(1) Schematic diagram (Schematische Darstellung / Пунктирная схема / Diagramma schematico / Diagrama esquemático / Diagrama esquemático / Diagrama esquemático)
 (2) Turn on Bluetooth (Bluetooth을 켜기 / Bluetooth을 켜기 / Bluetooth을 켜기 / Bluetooth을 켜기 / Bluetooth을 켜기)
 (3) Turn on Bluetooth (Bluetooth을 켜기 / Bluetooth을 켜기 / Bluetooth을 켜기 / Bluetooth을 켜기 / Bluetooth을 켜기)
 (4) Open APP (APP 열기 / APP 열기 / APP 열기 / APP 열기 / APP 열기)
 (5) Connect to Device (장치에 연결 / 连接到设备 / 连接到设备 / 连接到设备 / 连接到设备)
 (6) Connect to Device (장치에 연결 / 连接到设备 / 连接到设备 / 连接到设备 / 连接到设备)
 (7) Connect to Device (장치에 연결 / 连接到设备 / 连接到设备 / 连接到设备 / 连接到设备)

APP Control Mode



Clean Storage



EN: Specification

Model: Smv32 | Size: $\phi 1.0 \times 2.8 \times 1.5$ inch | Material: Silicone/ ABS | Charging voltage: DC 5V | Maximum charging current: 360mA | Weight: 344g/12.0 oz | Charging time: 120 minutes | Waterproof: IPX6 | Battery capacity: 1100mAh | Working time: > 150 minutes *
 *Working time is related to vibration mode

FR: Specification

Modèle: Smv32 | Taille: $\phi 29.0 \times 70.3 \times 39$ mm | Matière: Silicium / ABS | Poids: 344g | Tension de charge: 5V | Courant de charge maximum: 360mA | Capacité: 1100mAh | Temps de charge: 120 minutes | Durée de fonctionnement: > 150 minutes* | Capacité de la batterie: 1100 mah
 *Le temps de travail est lié au mode de vibration

KR: 사양

모델: Smv32 | 크기: $\phi 29.0 \times 70.3 \times 39$ mm | 재질: 실리콘 / ABS | 무게: 344g
 충전 전압: DC 5V | 최대 충전 전류: 360mA | 충전 시간: 약 120분
 용량 시간: > 150분* | 방수 등급: IPX6 | 배터리 용량: 1100mAh
 *근무 시간은 진동 모드와 관련이 있습니다

ES: Especificación

Modelo: Smv32 | Tamaño: $\phi 29.0 \times 70.3 \times 39$ mm | Material: Silicon / ABS | Voltaje de carga: DC 5V | Corriente máxima de carga: 360mA | Peso: 344g | Tiempo de carga: 120 minutos | Duración de funcionamiento: > 150 minutos* | Clasificación o prueba de agua: IPX6 | Capacidad de la batería: 1100mAh
 * El tiempo de trabajo está relacionado con el modo de vibración.

PT: Especificação

Modelo: Smv32 | Tamanho: $\phi 29.0 \times 70.3 \times 39$ mm | Material: Silício / ABS | Tensão de carregamento: DC 5 V | Corrente máxima de carregamento: 360mA | O tempo de carga: 120 minutos | Duração de funcionamento: > 150 minutos* | Classificação o prova d'água: IPX6 | Peso: 344g | Capacidade da bateria: 1100mAh
 * O tempo de trabalho está relacionado ao modo de vibração

DE: Spezifikation

Modell: Smv32 | Größe: $\phi 29.0 \times 70.3 \times 39$ mm | Material: Silikon / ABS | Ladespannung: DC 5V | Maximaler Ladesstrom: 360mA | Ladzeit: 120 Minuten | Betriebsdauer: > 150 Minuten* | Wasserdichtigkeit: IPX6 | Gewicht: 344g | Akku-Kapazität: 1100mAh
 * Die Arbeitszeit hängt vom Vibrationsmodus ab

RU: Спецификация

Модель: Smv32 | Размер: $\phi 29.0 \times 70.3 \times 39$ mm | Материал: Краеиний / ABS | Зарядное напряжение: DC 5 В | Максимальный зарядный ток: 360 мА | Время работы: > 150 минут* | Время зарядки: 120 минут | Вес: 344 г | Водонепроницаемый рейтинг: IPX6 | Емкость аккумулятора: 1100 мАч
 * Рабочее время связано с режимом вибрации

IT: specificazione

Modello: Smv32 | Dimensioni: $\phi 29.0 \times 70.3 \times 39$ mm | Materiale: silicone / ABS | Tensione di carica: DC 5 V. | Corrente di carica massima: 360mA | Peso: 344 g | Tempo di funzionamento: > 150 minuti* | Tempo di ricarica: 120 minuti | Capacità della batteria: 1100mAh
 * L'orario di lavoro è legato alla modalità di vibrazione

JP: 仕様

モデル: Smv32 | サイズ: $\phi 29.0 \times 70.3 \times 39$ mm | 材質: シリコン / ABS | 充電電圧: DC 5V | 充電電流: 360mA | 重量: 344g | バッテリー容量: 1100mAh
 防水等級: IPX6 | 最大充電電流: 360mA | 充電時間: > 150分* | 充電容量: 1100mAh
 *稼働時間は振動モードに依存しています

中文繁体: 規格

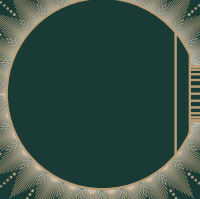
型號: Smv32 | 尺吋: $\phi 29.0 \times 70.3 \times 39$ mm | 充電電壓: 直流 5V | 最大充電電流: 360mA | 材質: 矽膠 / ABS | 重量: 344克 | 充電時間: 約 120 分鐘 | 工作時間: > 150 分鐘* | 防水等級: IPX6 | 電池容量: 1100mAh
 *工作時間與振動模式相關

中文简体: 规格

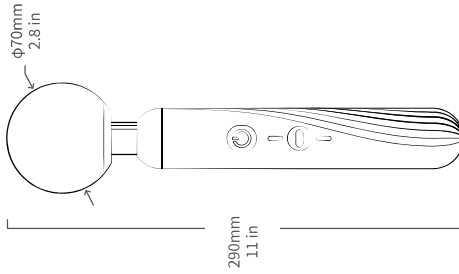
型号: Smv32 | 尺吋: $\phi 29.0 \times 70.3 \times 39$ mm | 充电电压: DC 5V | 最大充电电流: 360mA | 材质: 硅胶 / ABS | 重量: 344g | 充电时间: 约 120 分钟 | 防水等级: IPX6 | 电池容量: 1100mAh | 工作时长: > 150分钟*
 *工作时长与振动模式相关

Magic Zenith

A Fast Charging Cordless Smart Wand
APP Controlled



Packing list



- User Guide
- Пользовательская инструкция
- Guía del usuario
- Guida utente
- ユーザーガイド
- 说明书

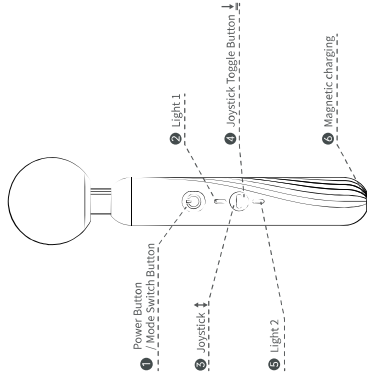


- Magnetic charging cable
- Магнитная зарядная кабель
- Cavo de carga magnético
- Cavo di ricarica magnetico
- 磁吸充電ケーブル
- 磁吸充电线



- Pacifi
- Cymka
- Balco
- Marzappo
- 非ーろ
- 吸嘴袋

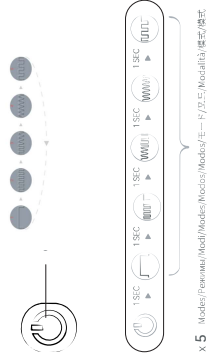
Description



- 1. Power button / Mode switch button
 - 2. Joystick 1
 - 3. Joystick 2
 - 4. Joystick toggle button
 - 5. Light 1
 - 6. Light 2
 - 7. Magnetic charging
- 1. Кнопка питания / переключатель режима
 - 2. Движок 1
 - 3. Движок 2
 - 4. Нажимный переключатель режима
 - 5. Светодиод 1
 - 6. Светодиод 2
 - 7. Магнитная зарядка
- 1. Wechselschalter / Auslöser
 - 2. Licht 1
 - 3. Joystick
 - 4. Joystick-Modultaste
 - 5. Licht 2
 - 6. Magnetische Aufladung
- 1. Botón de alimentación / botón de cambio de modo
 - 2. C1
 - 3. Palanca de mando
 - 4. Botón de palanca de mando
 - 5. C2
 - 6. Carga magnética
- 1. Botão ligar/desligar/botão interruptor de modo
 - Luz 1
 - Balançim
 - Botão de alternância do joystick
 - Luz 2
 - Carregamento magnético
- 1. 電源ボタン / モードスイッチ
 - 2. ジョイスティック 1
 - 3. ジョイスティック 2
 - 4. ジョイスティックモードボタン
 - 5. ライト 1
 - 6. ライト 2
 - 7. 磁気充電
- 1. 電源 / 開 / 閉 / 2. 非 / 3. 非 / 4. 非 / 5. 非 / 6. 非 / 7. 非
- 1. 1. Botón de acci3n / interruptor de modo
 - 2. Indicador luminoso 1
 - 3. 3. Bot3n de acci3n / interruptor de modo
 - 4. Indicador luminoso 2
 - 5. 5. Bot3n de acci3n / interruptor de modo
 - 6. 6. Indicador luminoso 1
 - 7. 7. Bot3n de acci3n / interruptor de modo
 - 8. 8. Indicador luminoso 2
 - 9. 9. Bot3n de acci3n / interruptor de modo
 - 10. 10. Indicador luminoso 1
 - 11. 11. Bot3n de acci3n / interruptor de modo
 - 12. 12. Indicador luminoso 2

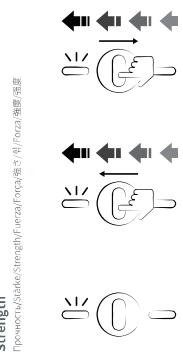
- 3. 磁吸充電線 / 磁吸充電線
- 4. 磁吸充電線 / 磁吸充電線
- 5. 磁吸充電線 / 磁吸充電線
- 6. 磁吸充電線 / 磁吸充電線
- 7. 磁吸充電線 / 磁吸充電線
- 8. 磁吸充電線 / 磁吸充電線
- 9. 磁吸充電線 / 磁吸充電線
- 10. 磁吸充電線 / 磁吸充電線
- 11. 磁吸充電線 / 磁吸充電線
- 12. 磁吸充電線 / 磁吸充電線

Manual mode (Without Phone)

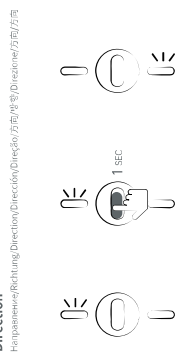


x 5. Mode / Power / Mode / Mode / Mode / E = F / G (Modality) 模式 / 模式

Strength



Direction



APP Download



Scan QR code for APP download

- EN: APP Download**
 1. Search for "Whats Sense" in iOS App Store or Google Play.
 2. Scan below QR code to download the App.
 3. download from: www.magicsmotion.com
- FR: Téléchargement APP**
 1. Recherchez "Whats Sense" dans l'App Store ou Google Play.
 2. Scannez le code QR ci-dessous pour télécharger l'App.
 3. téléchargement depuis: www.magicsmotion.com
- DE: APP herunterladen**
 1. Suchen Sie nach "Whats Sense" im iOS App Store oder Google Play.
 2. Scannen Sie unter QR-Code, um die App herunterzuladen.
 3. download von: www.magicsmotion.com
- RU: Скачать приложение**
 1. Выпните пакт приложения "Whats Sense" в iOS App Store или Google Play.
 2. Отсканируйте QR-код, чтобы скачать приложение.
 3. скачать с: www.magicsmotion.com
- IT: Download APP**
 1. Cerca "Whats Sense" in iOS App Store o Google Play.
 2. Scansiona sotto il codice QR per scaricare l'app.
 3. Scaricare da: www.magicsmotion.com
- PT: APP Download**
 1. Pesquise "Whats Sense" no loja de aplicativos iOS ou no Google Play.
 2. Digitalize abaixo o código QR para baixar o aplicativo.
 3. download de: www.magicsmotion.com
- ES: Descarga de la APLICACIÓN**
 1. Busque "Whats Sense" en la tienda de aplicaciones de iOS o Google Play.
 2. Escanee debajo del código QR para descargar la aplicación.
 3. descargar desde: www.magicsmotion.com
- JP: APPダウンロード**
 1. iOS App StoreまたはGoogle Playで「Whats Sense」を検索します。
 2. QRコードを読み込んでアプリをダウンロードします。
 3. からダウンロード: www.magicsmotion.com
- KR: APP 다운로드**
 1. iOS 앱 스토어 또는 구글 플레이에서 "Whats Sense"를 검색하십시오.
 2. 아래의 QR 코드를 스캔 하거나 앱을 다운로드 하세요.
 - 3.에서 다운로드: www.magicsmotion.com

- 中文繁体: APP下載**
 1. iOS App Store 或 Google Play 搜尋 "Whats Sense"。
 2. 掃描二維碼下載。
 3. 網站下載: www.magicsmotion.com
- 中文简体: APP下载**
 1. iOS App Store 中搜索 "Whats Sense"。
 2. 扫描二维码下载。
 3. 网站下载: www.magicsmotion.com



扫描二维码下载

Magic Motion



This device complies with Part 15 of the FCC Rules. Operation is subject to the following two conditions: (1) this device may not cause harmful interference, and (2) this device must accept any interference received, including interference that may cause undesired operation

NOTE: This equipment has been tested and found to comply with the limits for a Class B digital device, pursuant to Part 15 of the FCC Rules. These limits are designed to provide reasonable protection against harmful interference in a residential installation. This equipment generates, uses and can radiate radio frequency energy and, if not installed and used in accordance with the instructions, may cause harmful interference to radio communications. However, there is no guarantee that interference will not occur in a particular installation.

If this equipment does cause harmful interference to radio or television reception, which can be determined by turning the equipment off and on, the user is encouraged to try to correct the interference by one or more of the following measures:

- Reorient or relocate the receiving antenna.
- Increase the separation between the equipment and receiver.
- Connect the equipment into an outlet on a circuit different from that to which the receiver is connected.
- Consult the dealer or an experienced radio/TV technician for help.

Warning: changes or modifications not expressly approved by the party responsible for compliance could void the user's authority to operate the equipment