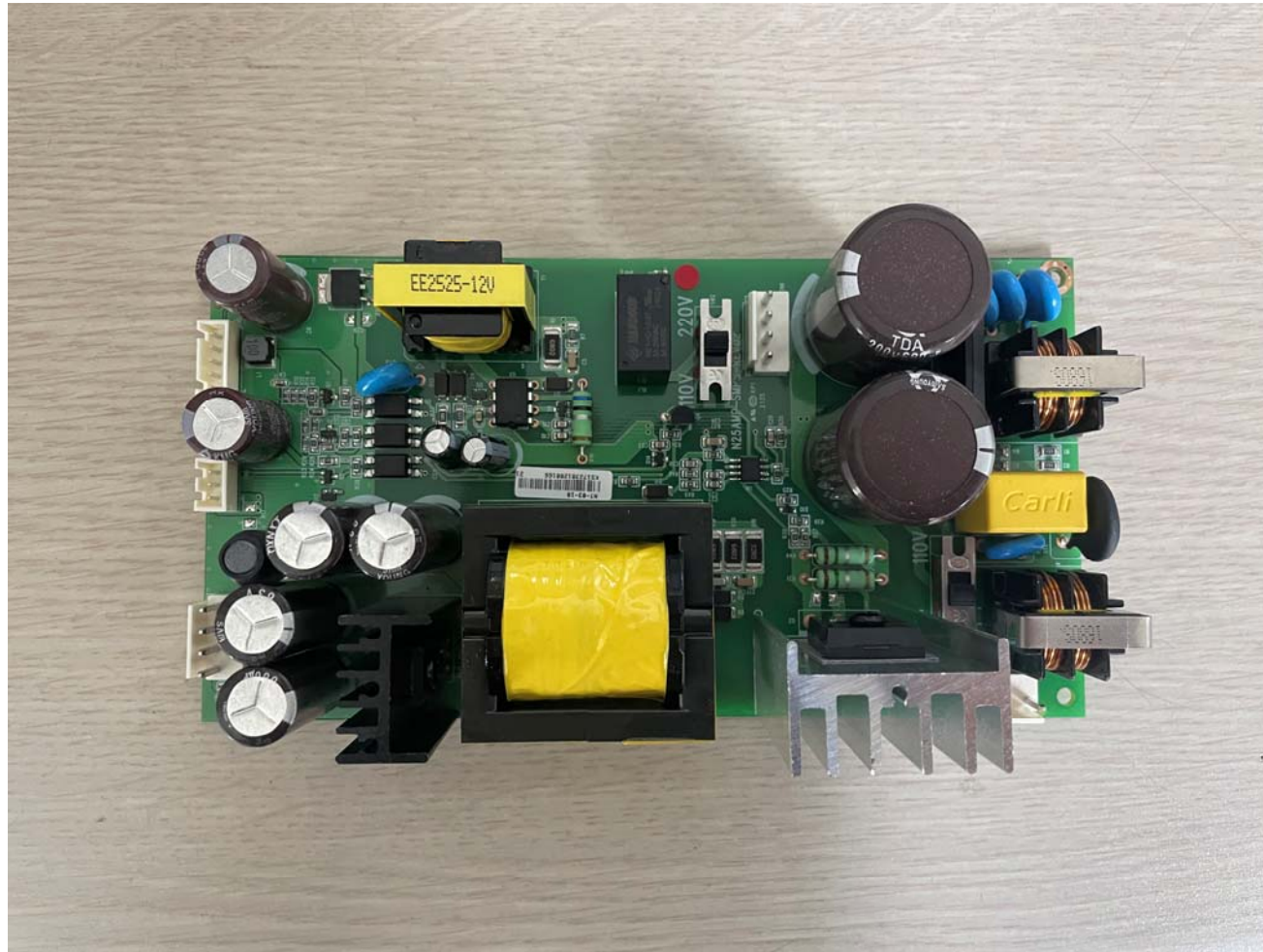
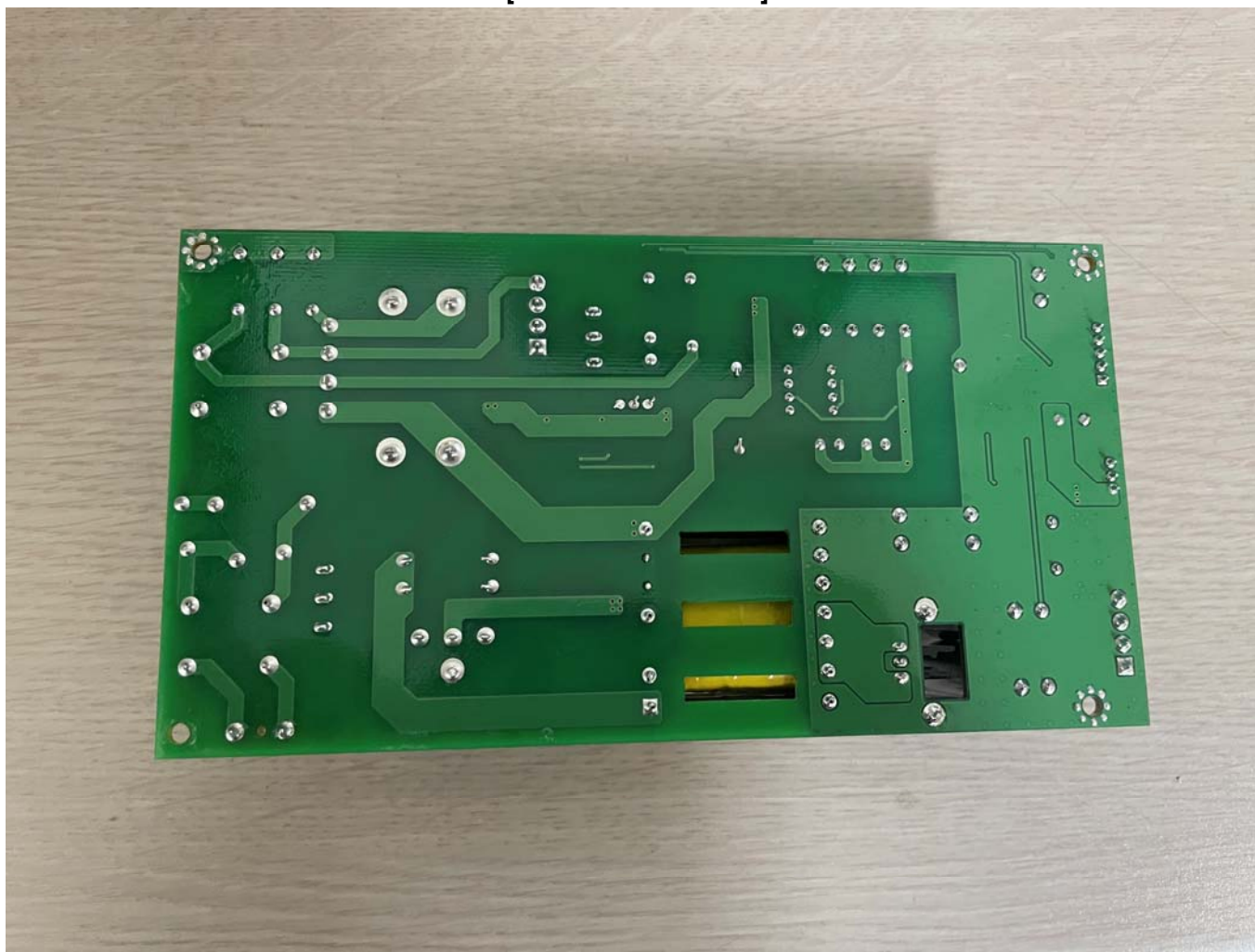


### Appendix 3. Photographs of EUT [Internal View]

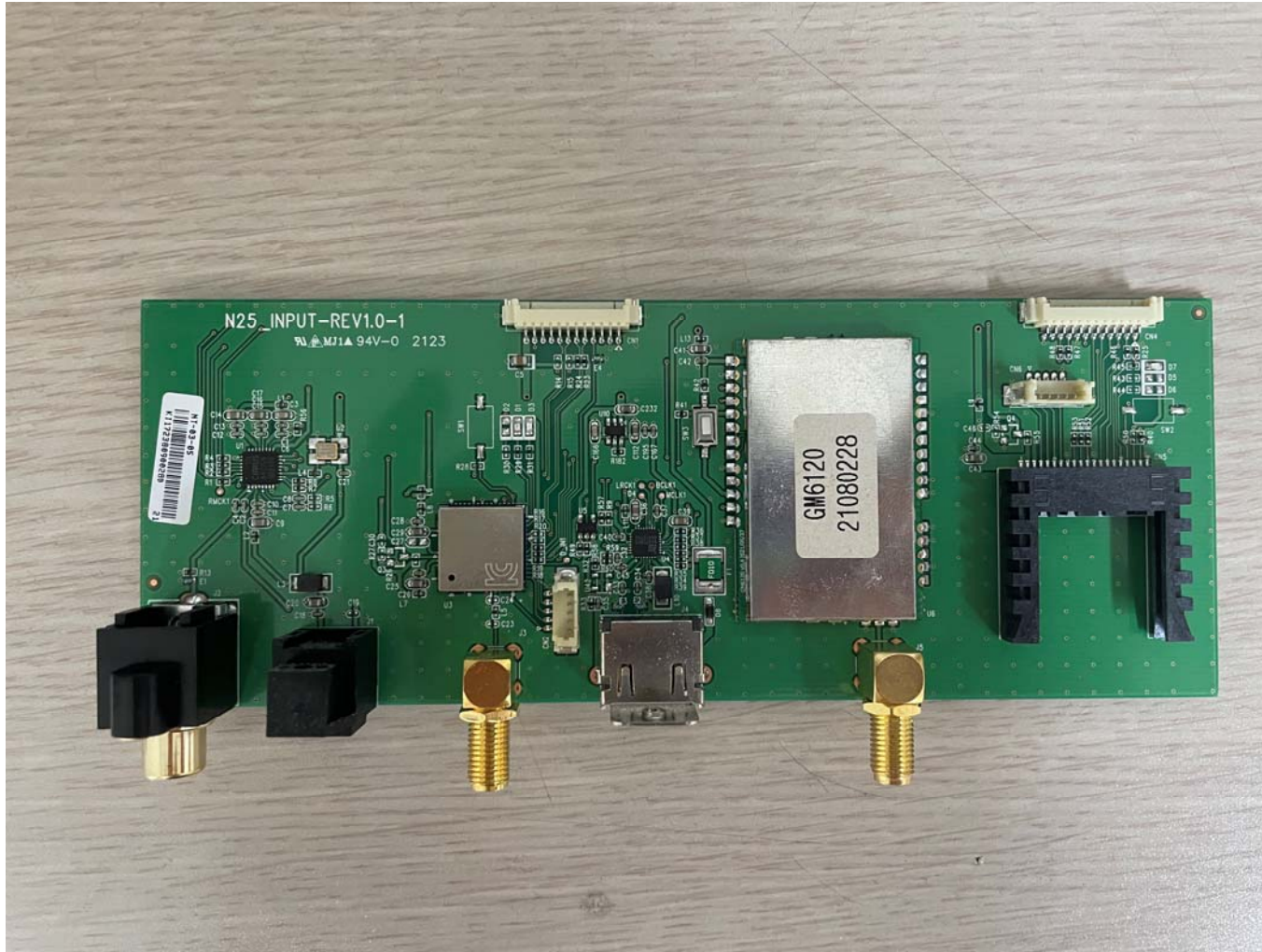
[Power Board Top]



[Power Board Bottom]



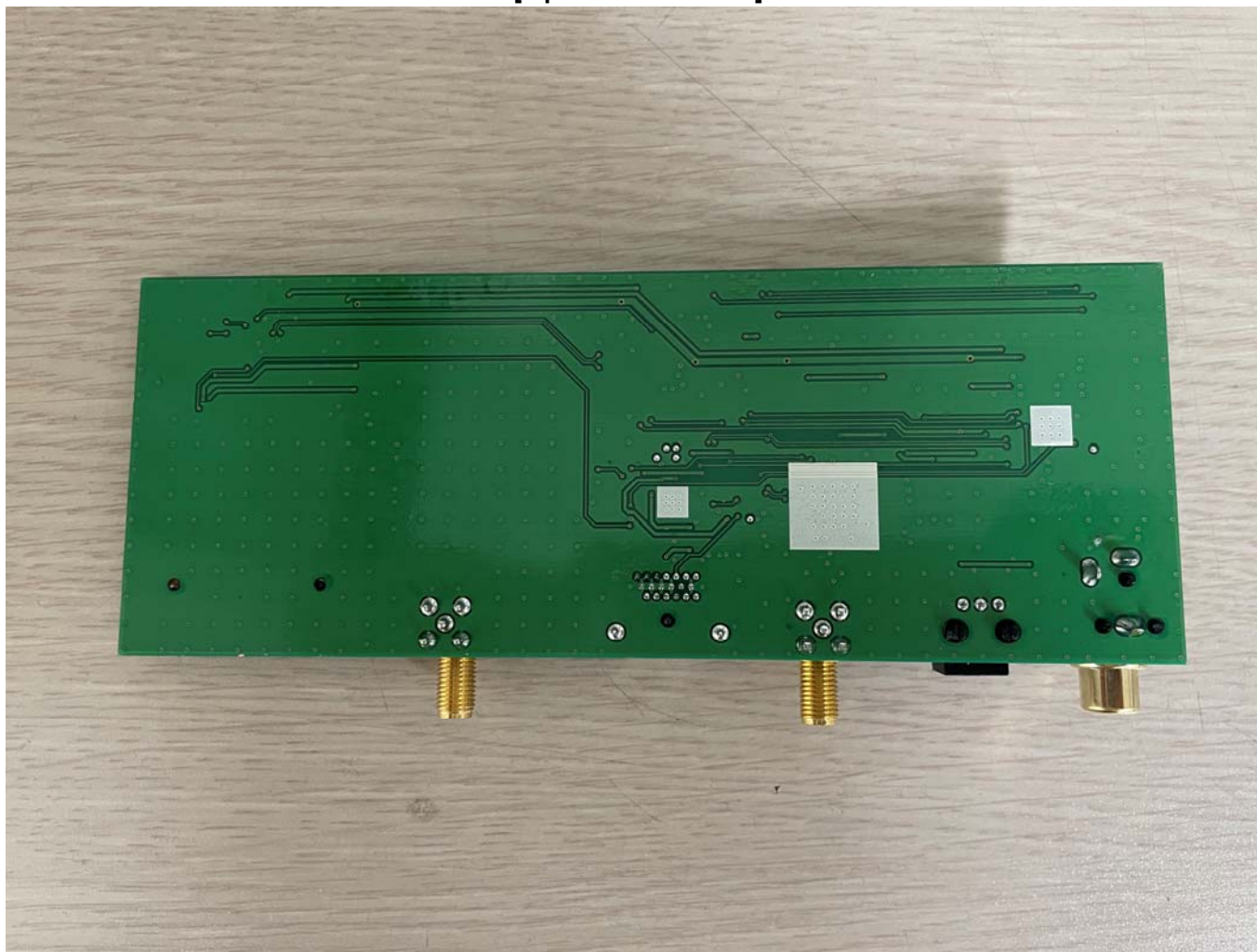
[Input Board Top]



[Input Board Top\_ Shield removed]



[Input Board Bottom]



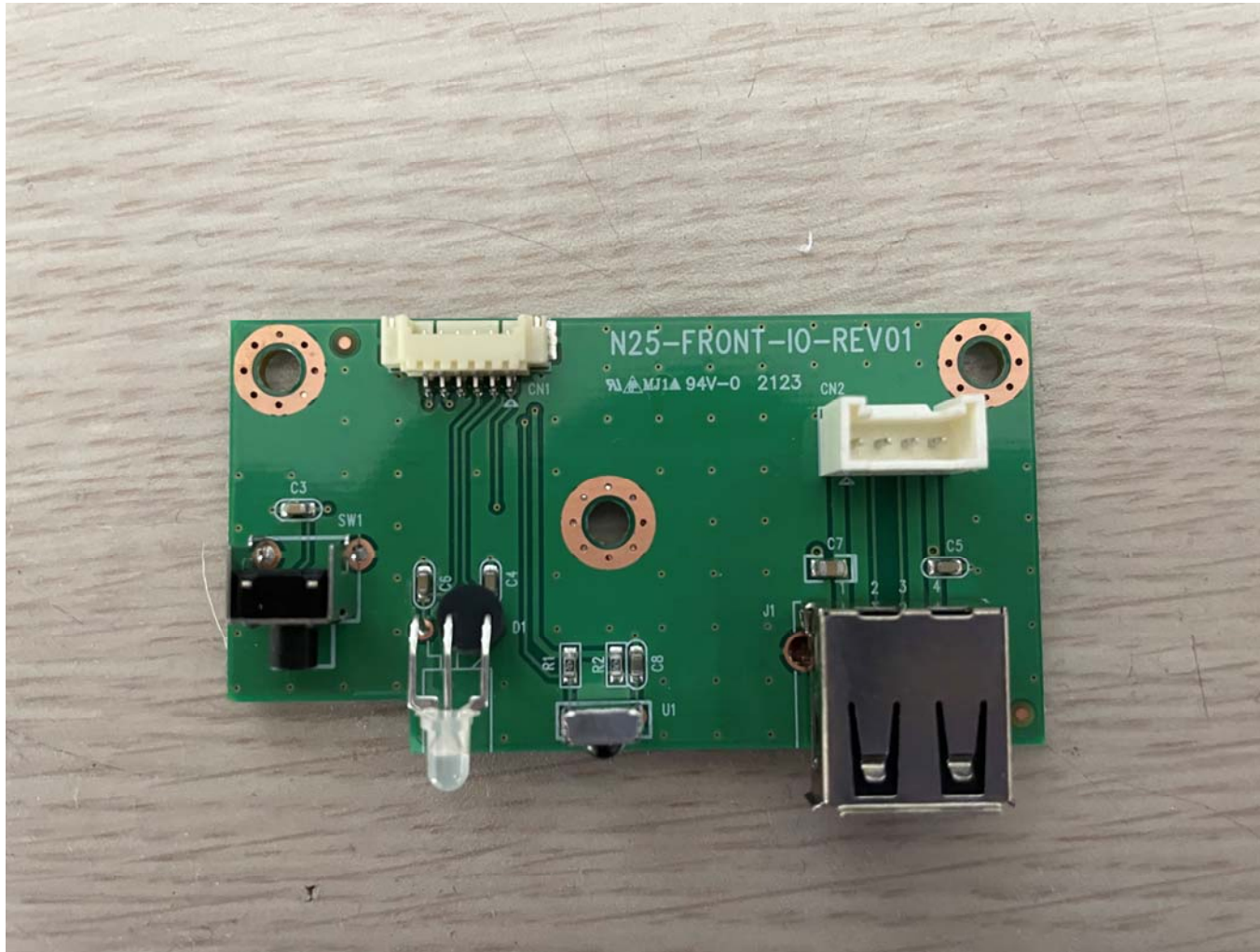
[Digital Out Board Top]



[Digital Out Board Bottom]

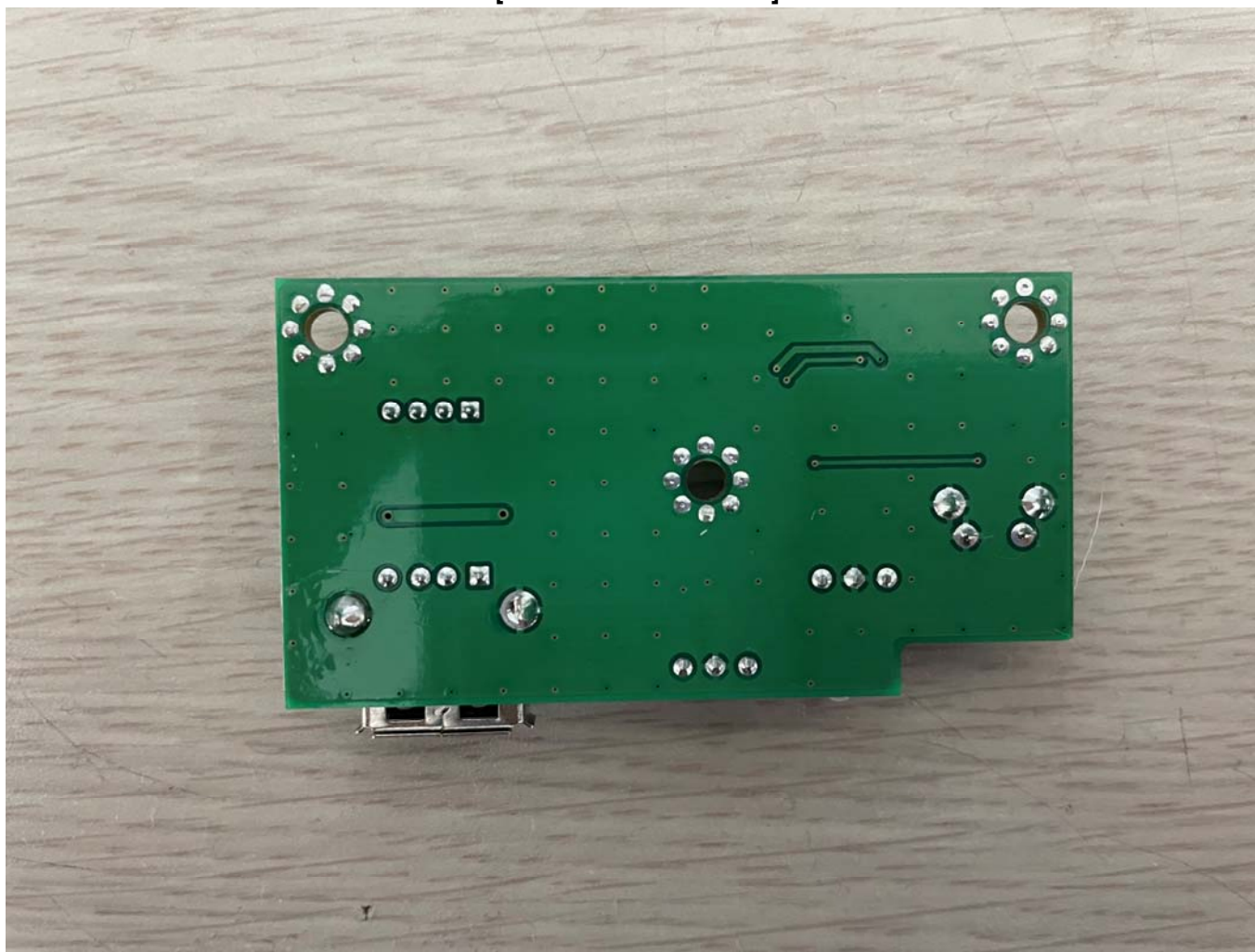


[Front IO Board Top]

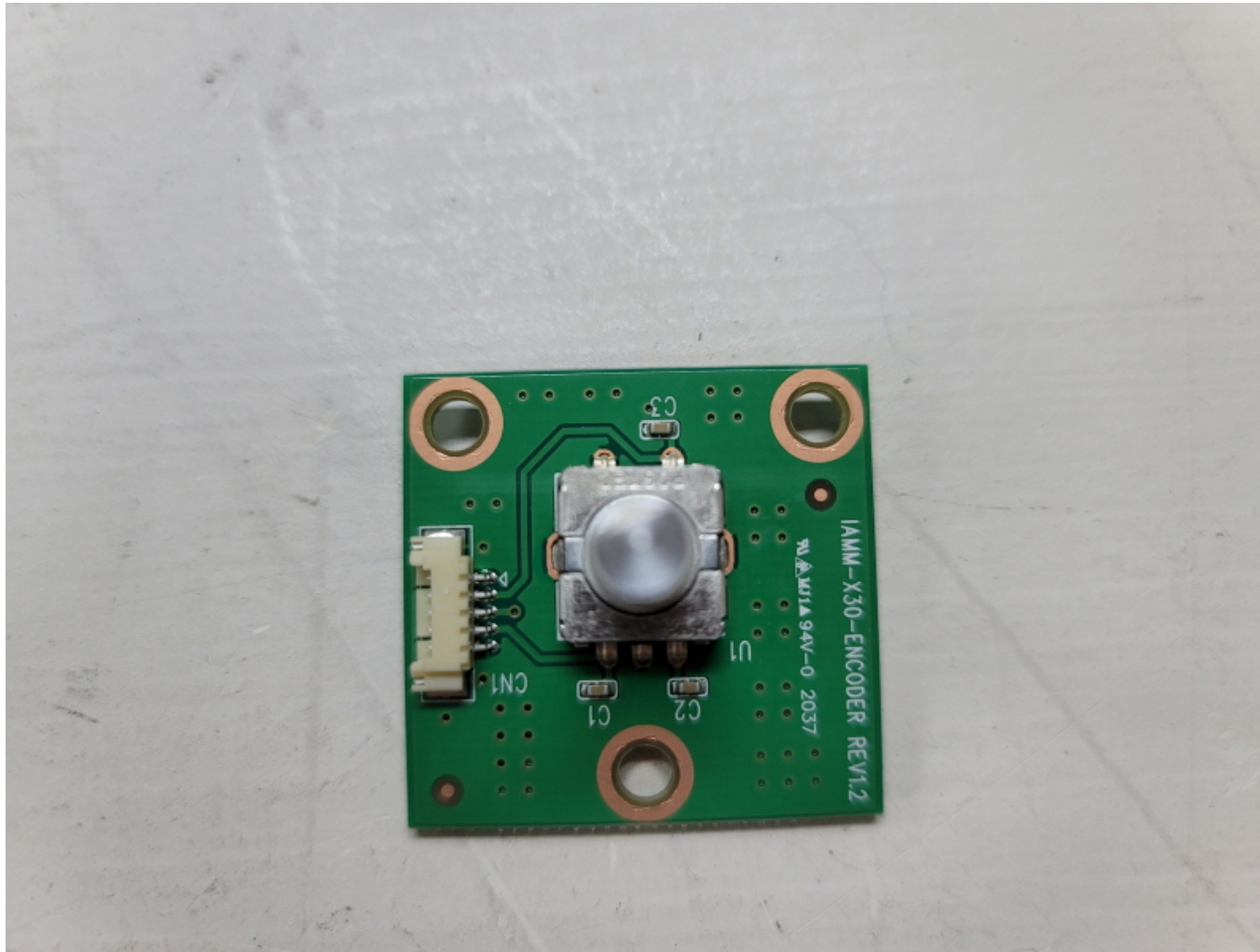




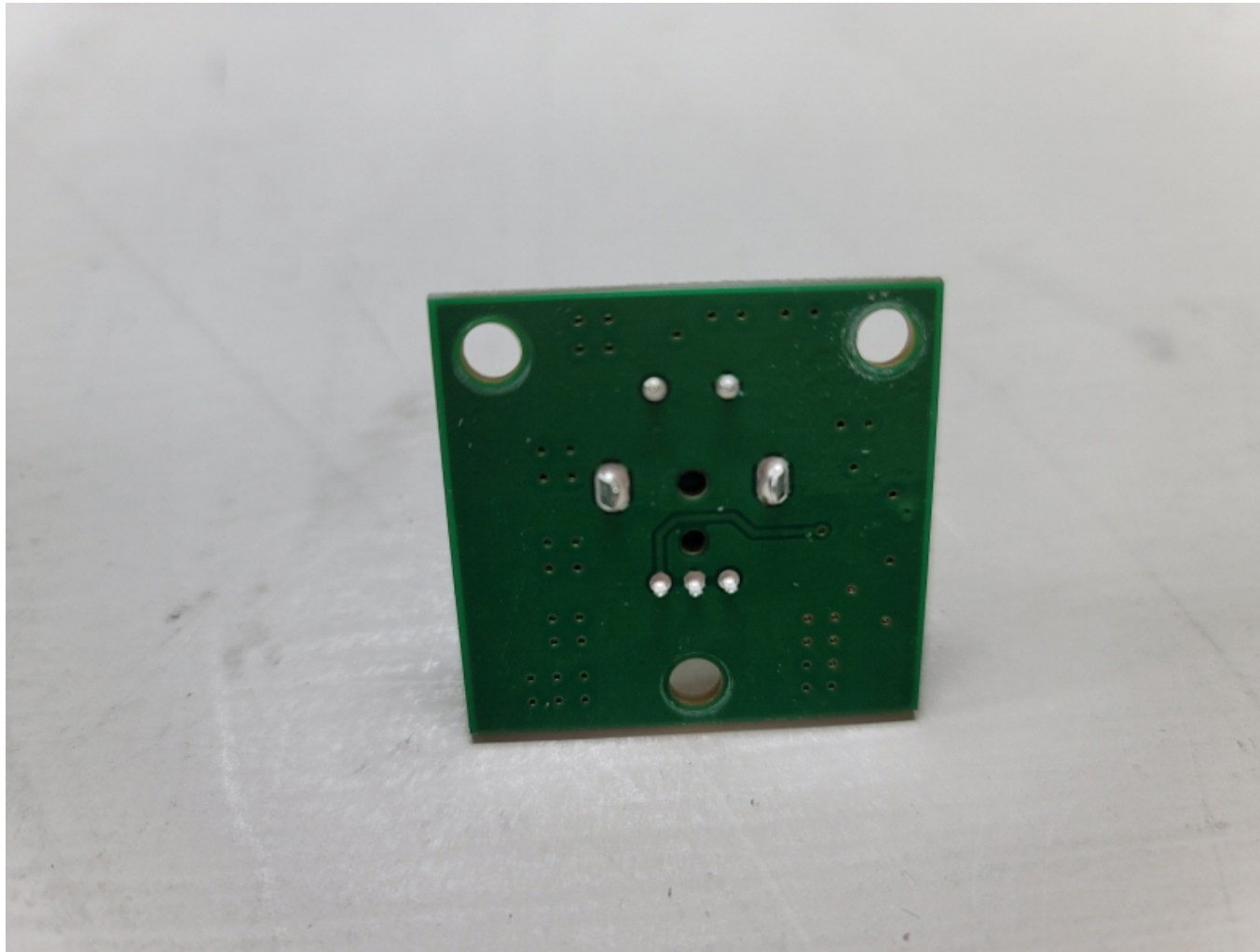
[Front IO Board Bottom]



[Encoder Board Top]



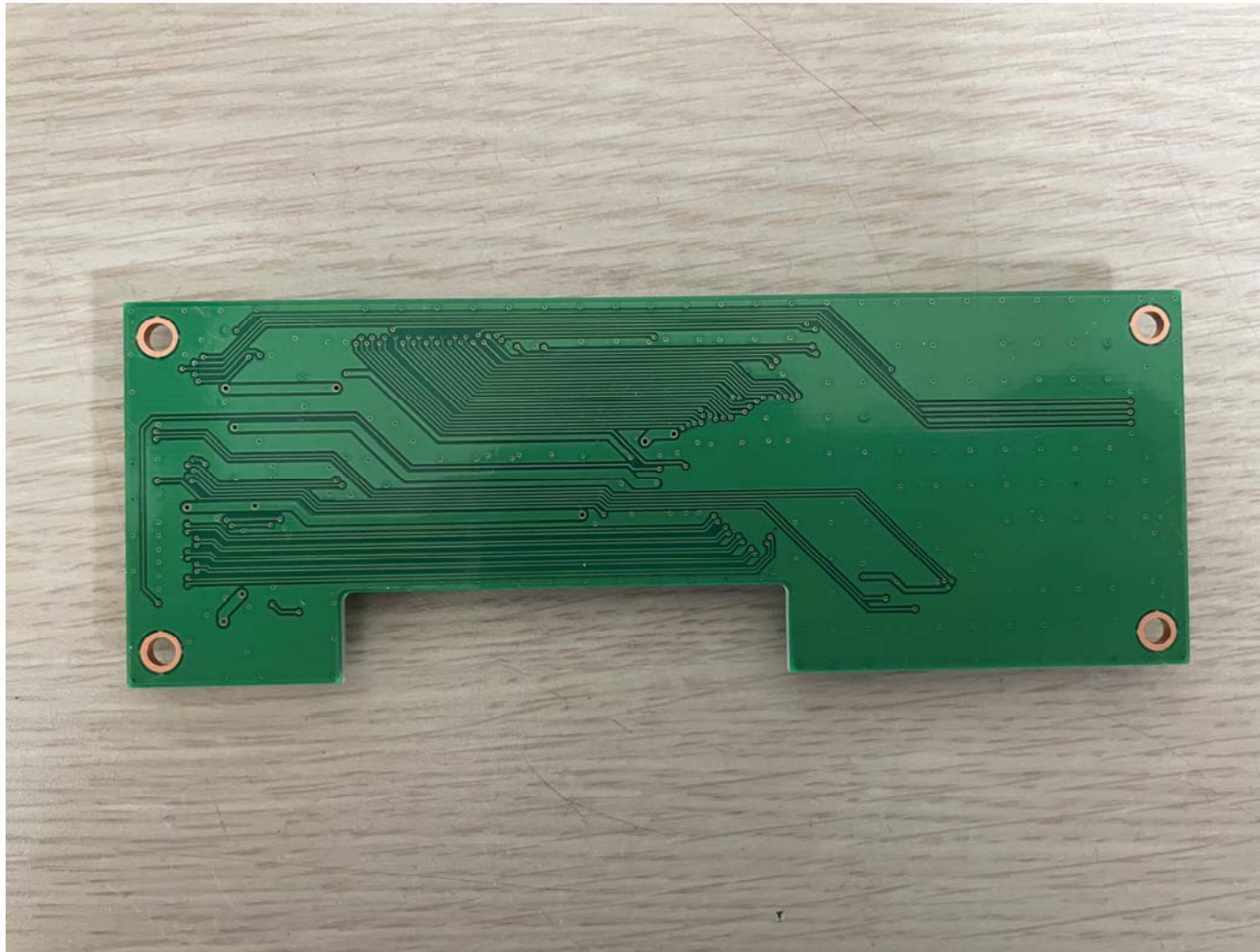
**[Encoder Board Bottom]**



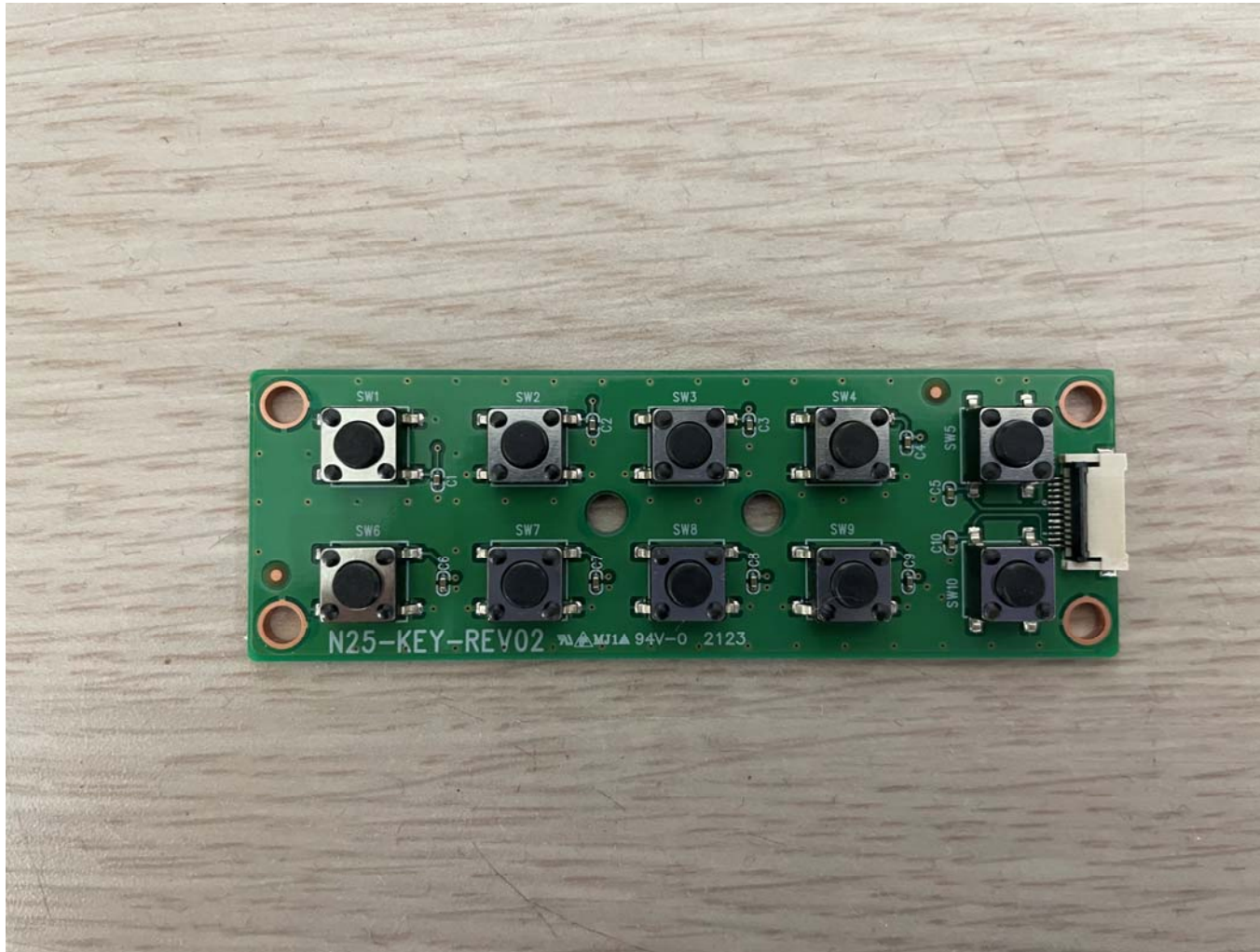
[LCD Board Top]



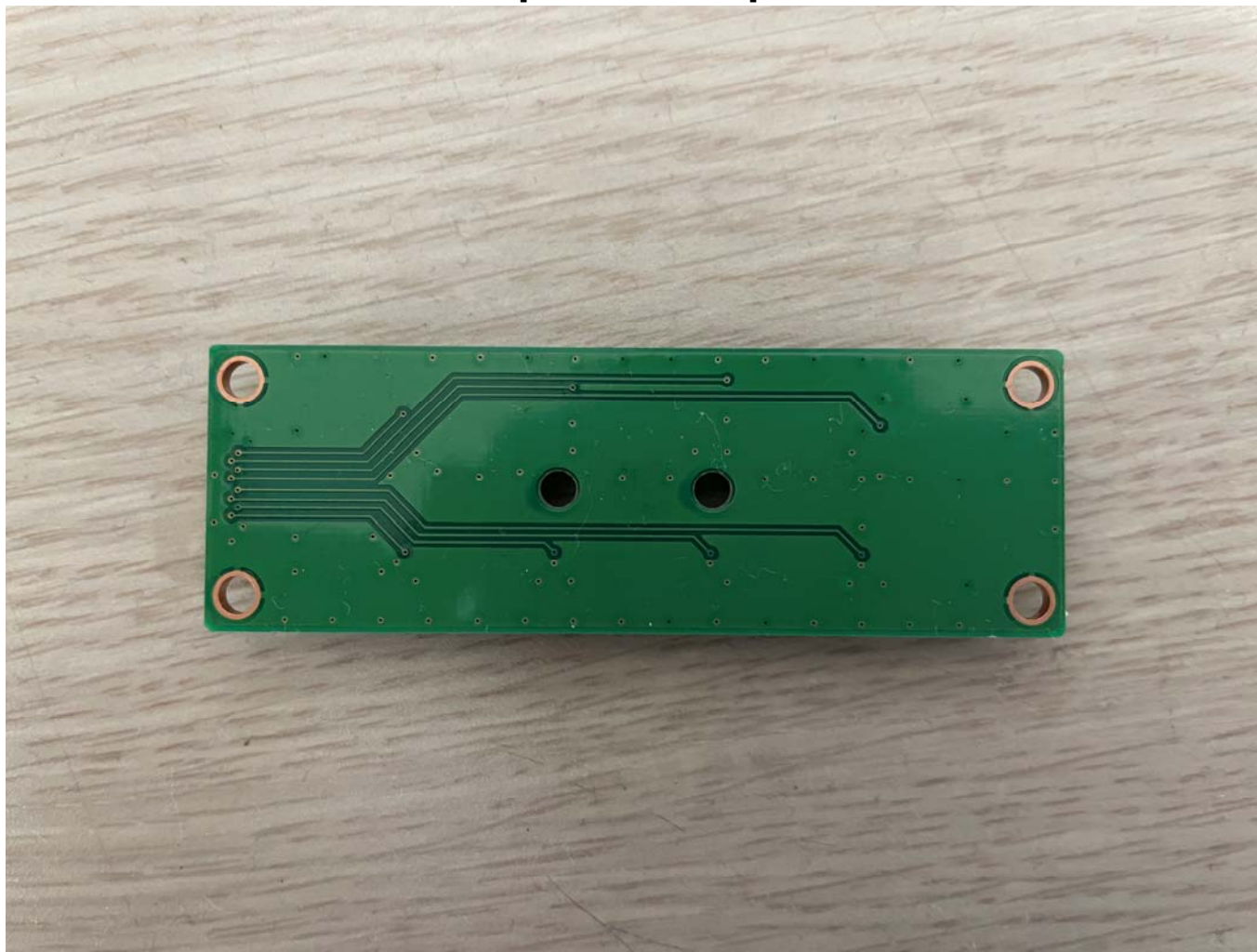
[LCD Board Bottom]



[KEY Board Top]



**[KEY Board Bottom]**

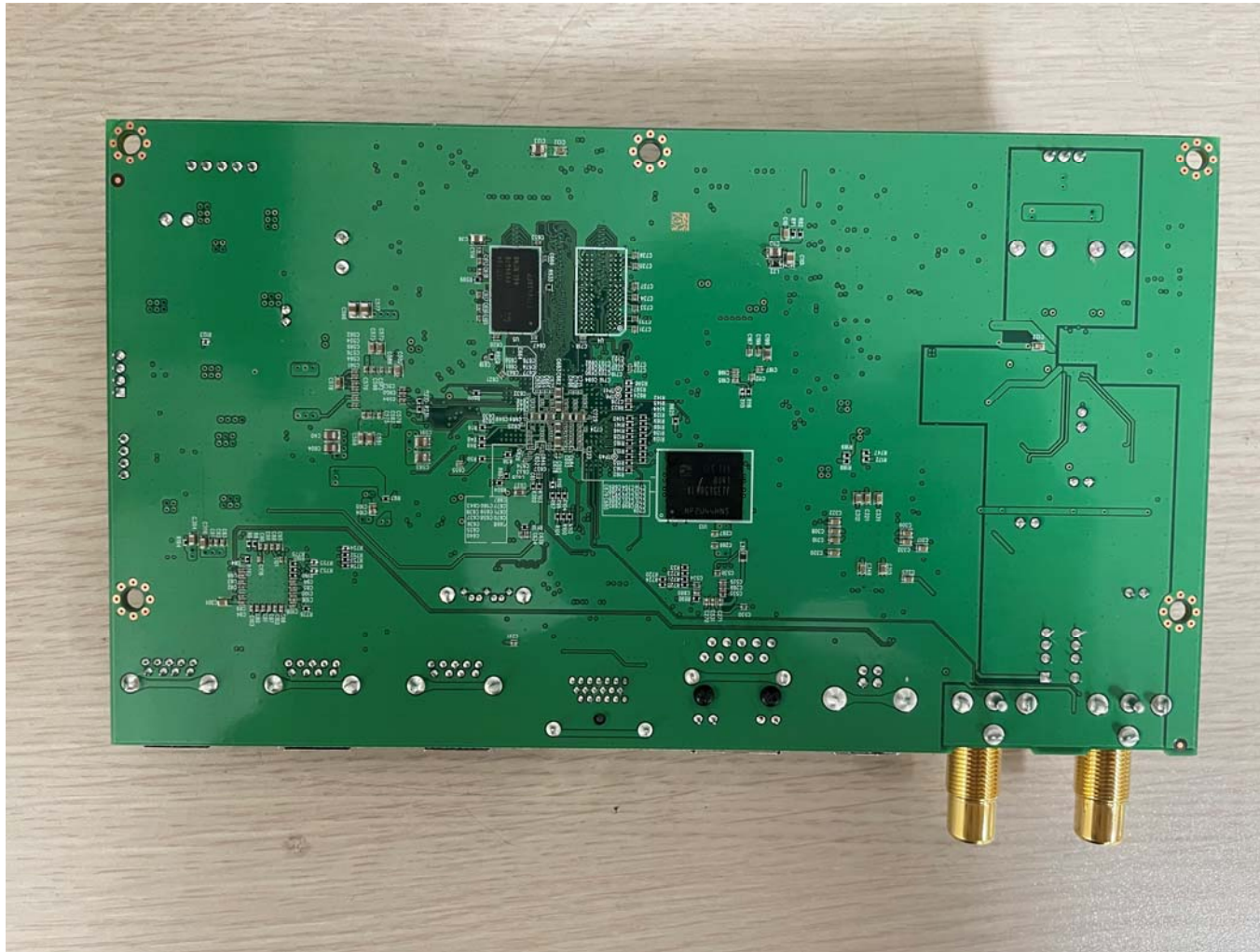


[Main Board Top]

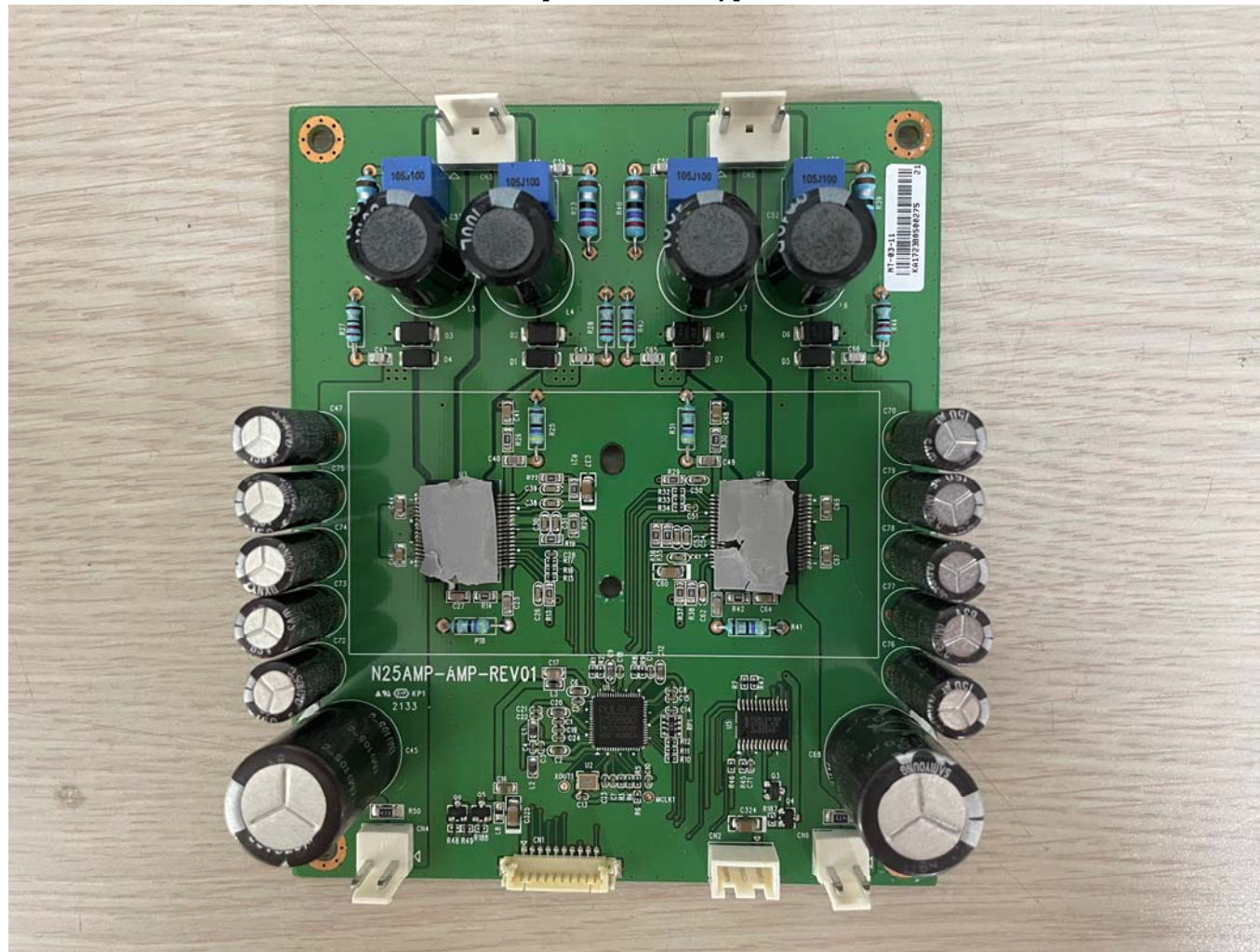




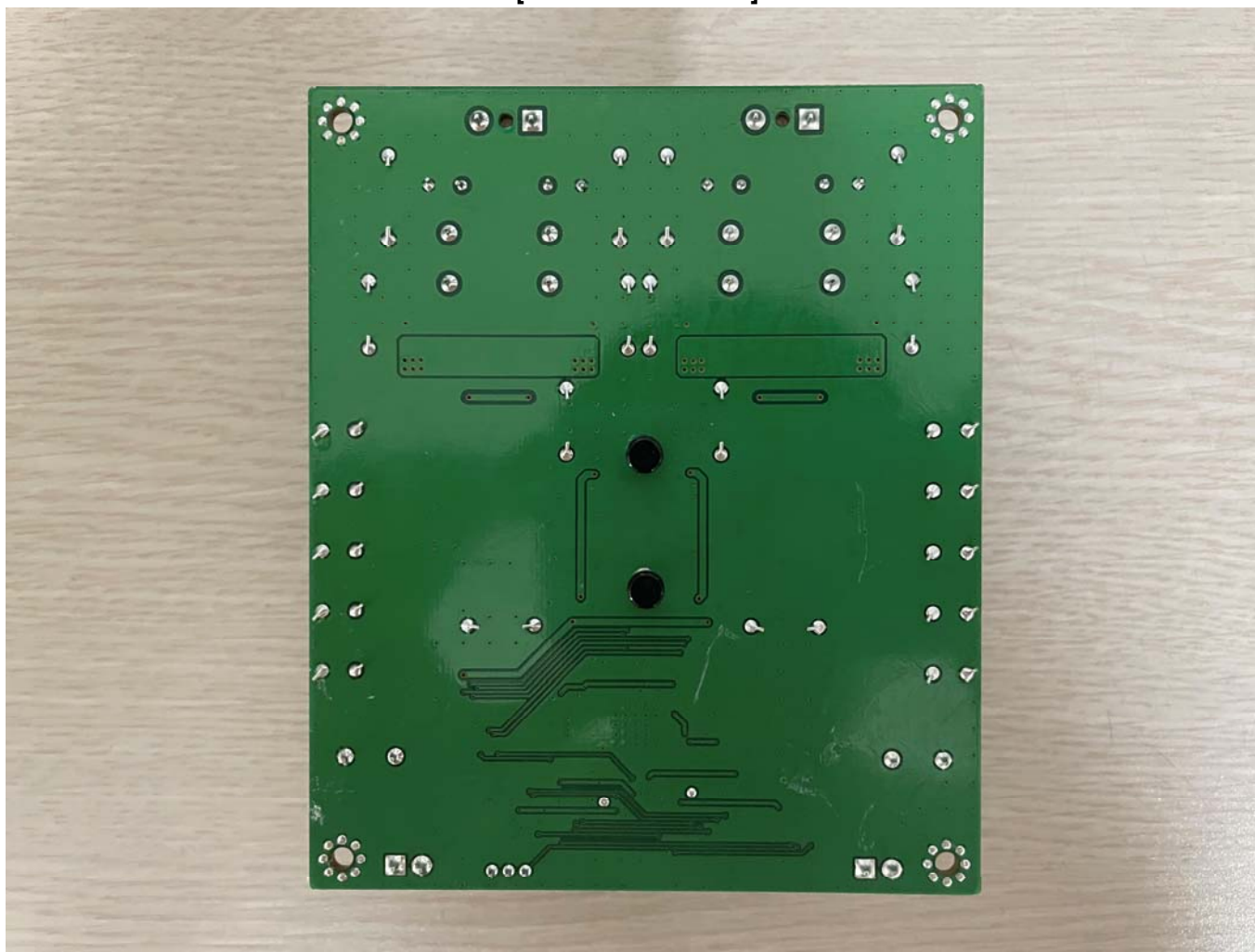
[Main Board Bottom]



[AMP Board Top]



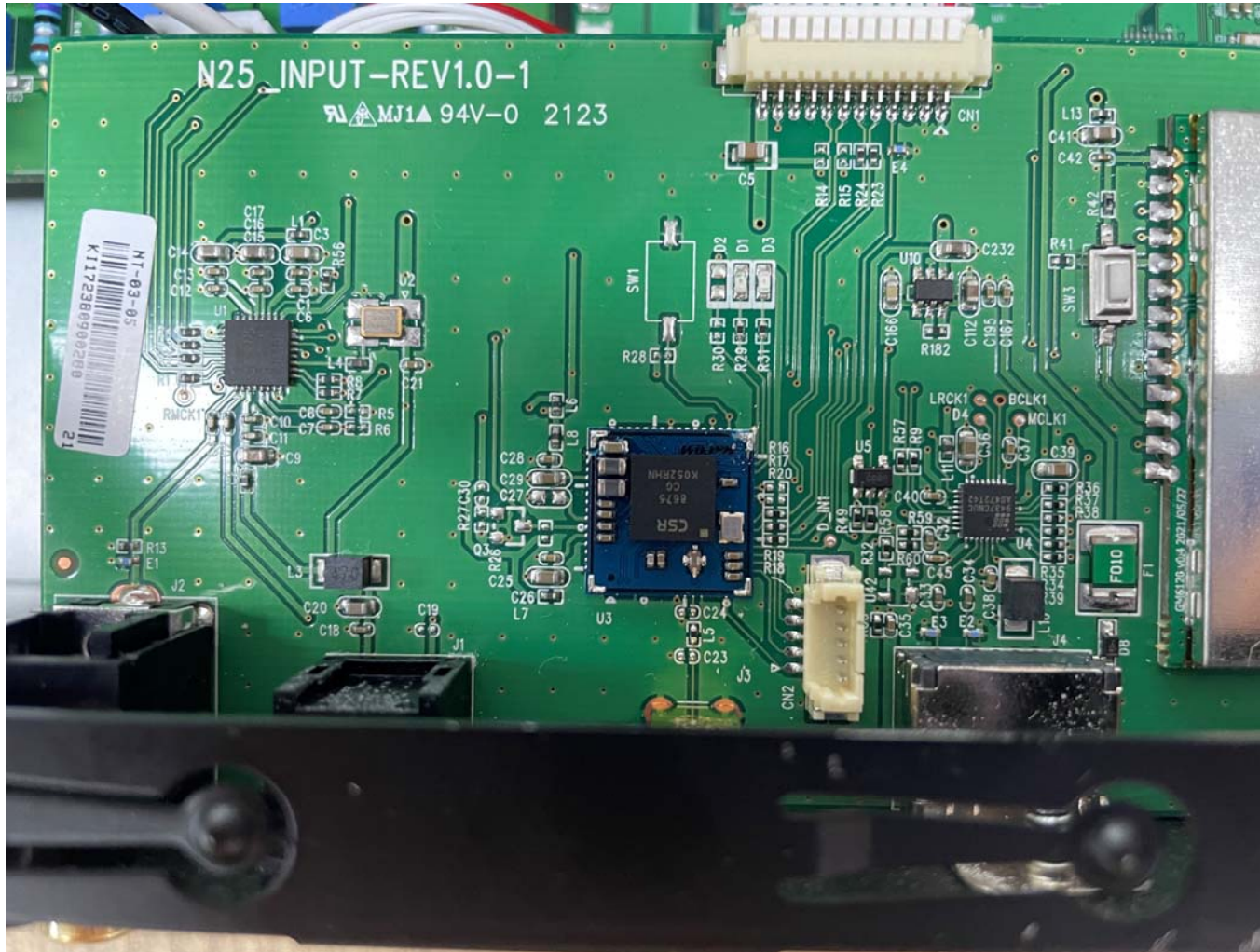
[AMP Board Bottom]



[Inside]



[Bluetooth Module\_Shield removed]



[GPS Module\_ Shield removed]

