

FASTpass® P1F/P1R/P1U

Fast, reliable, and compact passport reader



User's Manual

Version 1.0.0

2021/09/13

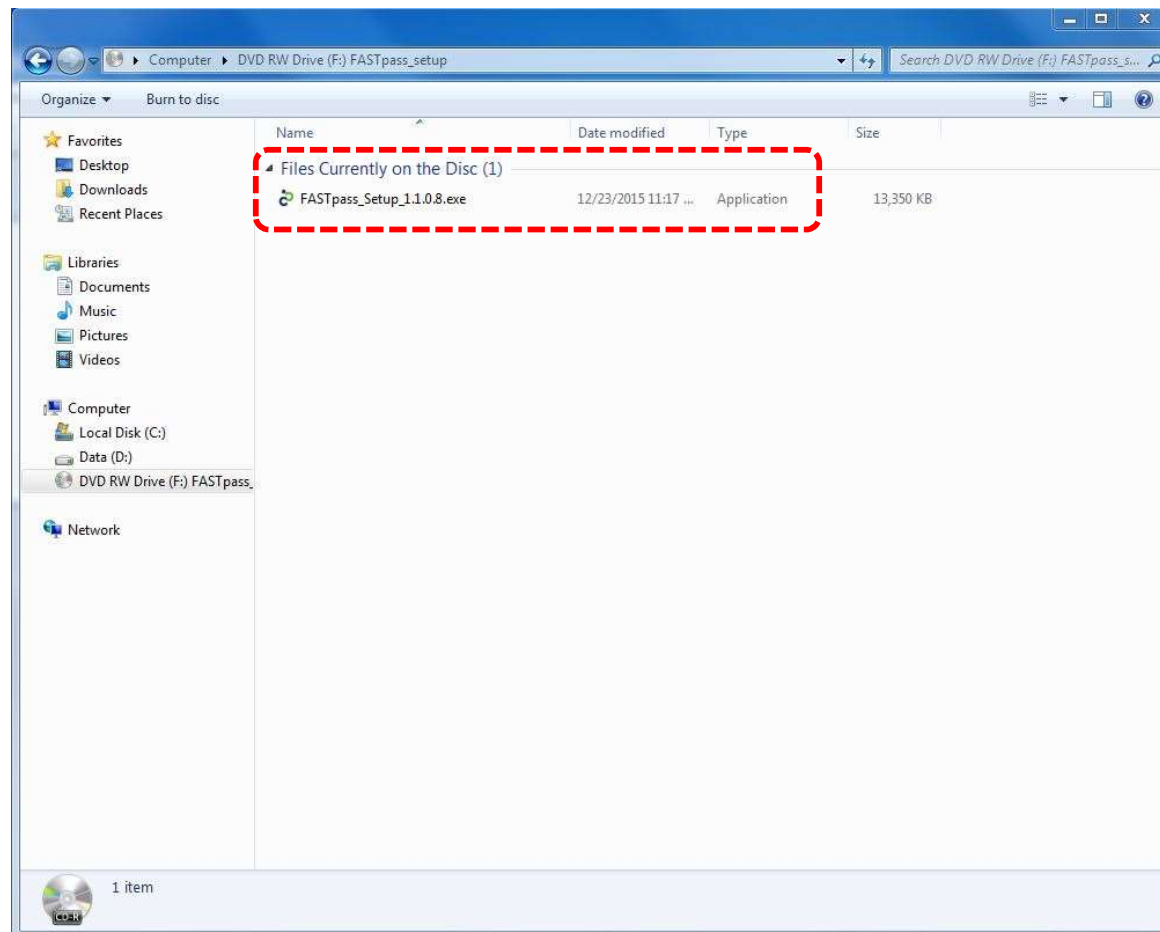
Notice

- Before connecting FASTpass® P1F/P1R/P1U to a PC, you should install **device driver first**.
- **Compatible adaptor** should be used.
- Device's input window or inner parts could be damaged by a sheer drop from the high place or an external shock
- To minimize a recognition error, the input window should be periodically cleaned with SMARTCORE's **proprietary cloth** or other soft cloths (cleaning with a wet cloth could cause a recognition error because it sometimes leaves marks)
- Although you connect USB and Power cables to FASTpass® P1F/P1R/P1U and turn on the power switch, the device's power is not on without PC power.
- If PC's power is off while the device is on, the latter's power is automatically changed to off. If the device does not become off, it means that PC's USB port is still providing power to it. In this case, you may turn off device's power switch.

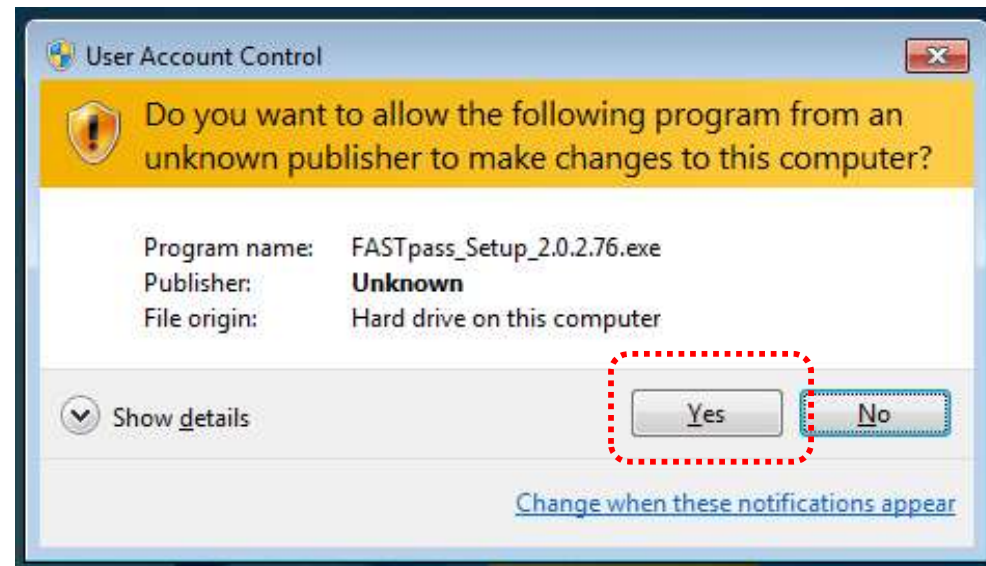


1. Driver Installation (Windows 7)

- Step 1) For driver installation, run an installation program from the provided CD.
 - Program name: **FASTpass_Setup_0.0.0.0.exe**
 - Notice: version number in **FASTpass_Setup_0.0.0.0** can be changed in distribution.



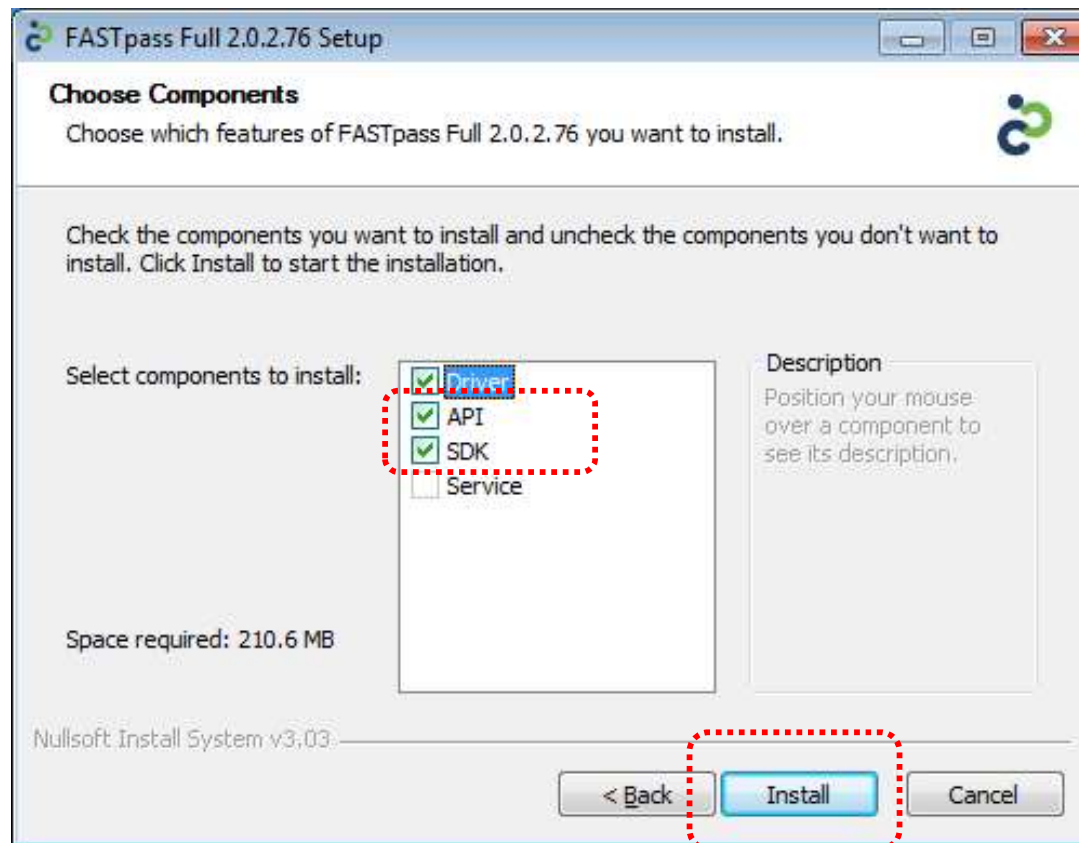
- Step 2) Click [Yes] button after the installation program runs.



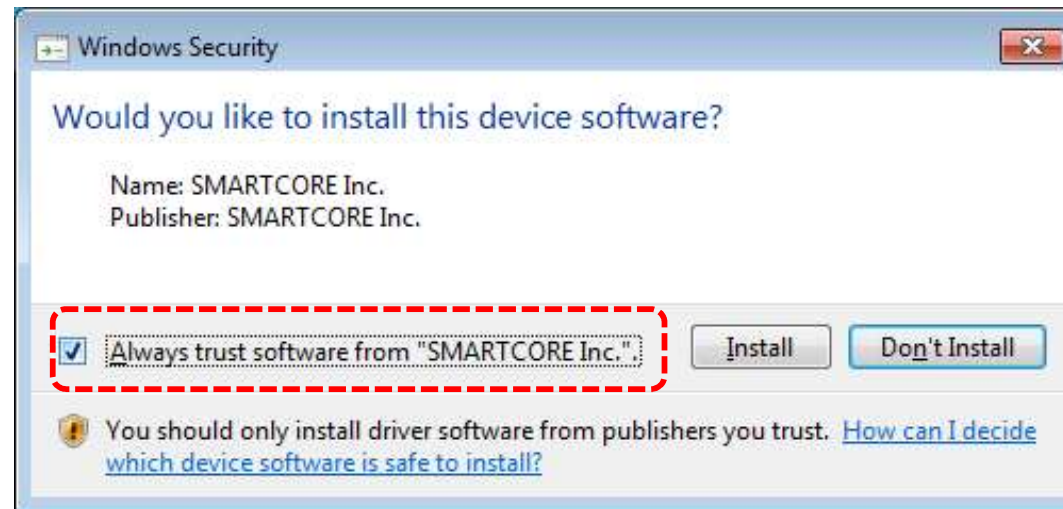
- Step 3) Click [Next] button.



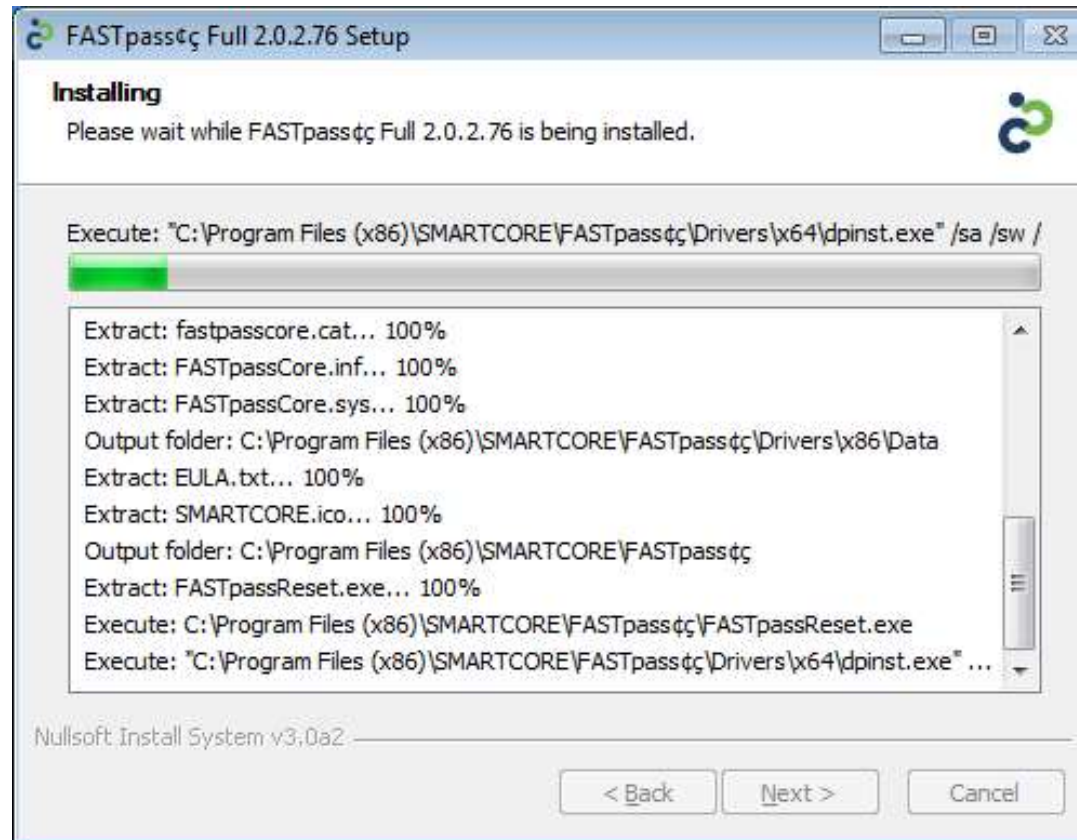
- Step 4) Click [Install] button.
 - Select API and SDK for installation



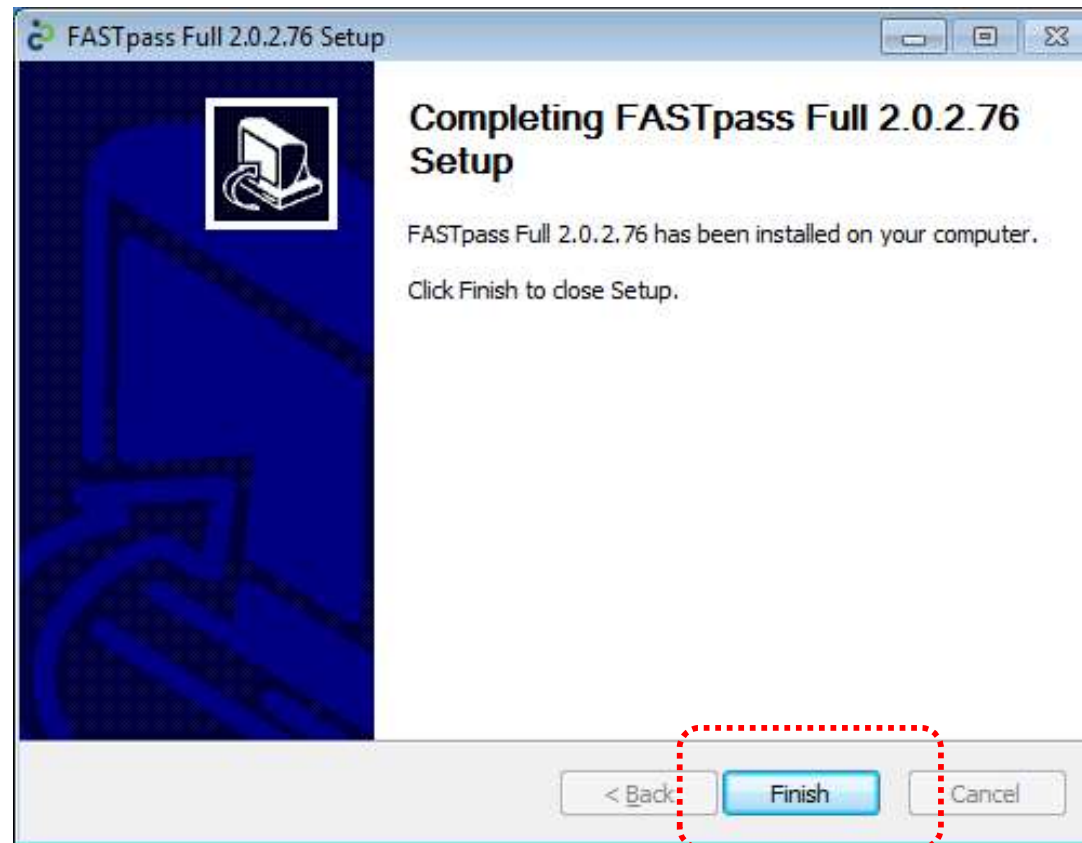
- Step 5) Select [Always trust software from “SMARTCORE Inc.”] and click [Install] after Windows Security screen appears.



- Step 6) Wait till files required for installation are copied.

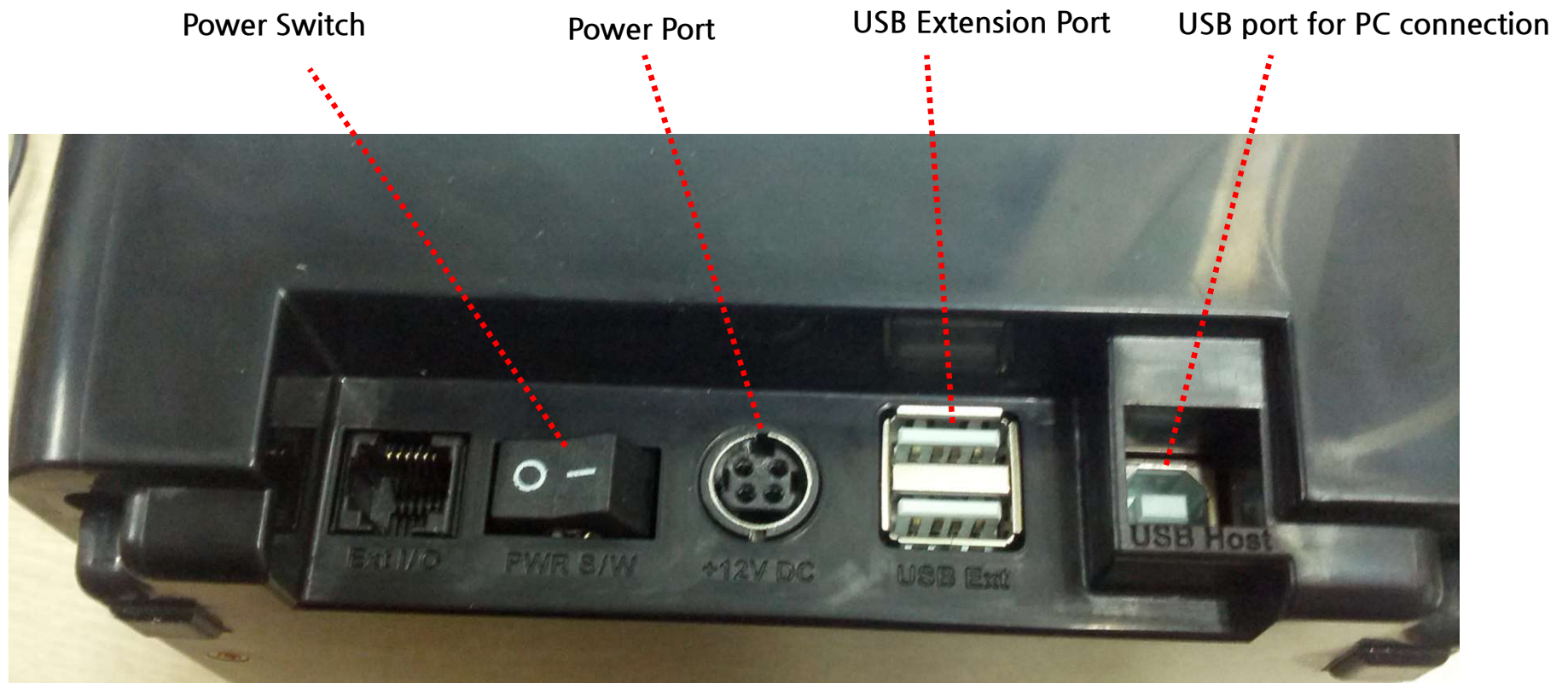


- Step 7) Driver installation is completed with [Finish] button clicked



2. Device Connection

- Step 1) Check the backside of FASTpass® P1F/P1R/P1U for device connection



- Step 2) Connect power cable while power switch is off (clicked to the left side)



- Step 3) Connect USB cable while power switch is off (clicked to the left side)



- Step 4) Plug power cable in



- Step 6) Click power switch to ON (to the right side)



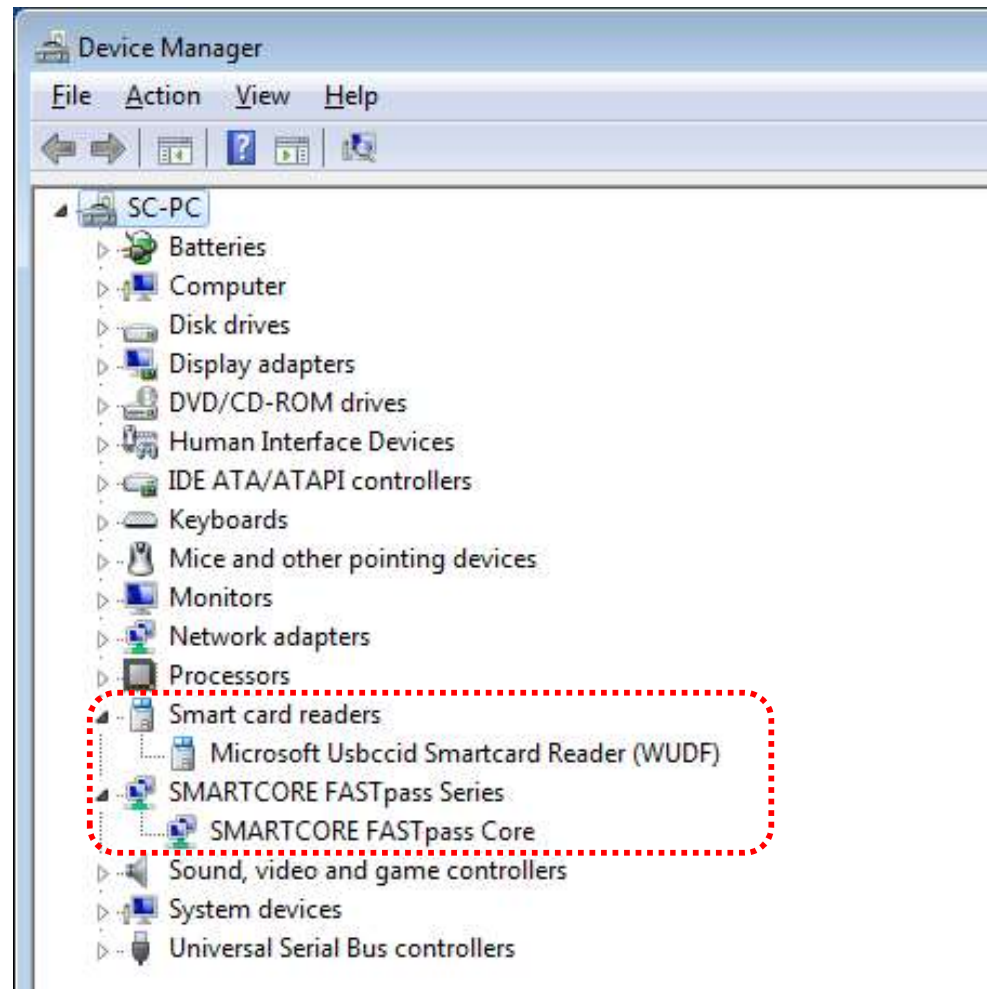
- Step 7) Check if the state LED is red
 - If the state LED is green, it means that the reader is automatically connect to a passport reading program (it is not an issue of trouble shooting)



After power connected : red
After program connected : green

3. Checking Driver Installation (Windows 7)

- Check at device manager for whether [Microsoft Usbccid Smartcard Reader (WUDF)] and [SMARTCORE FASTpass P1 Core] is in the list



4. Checking Device Operation

- After installing device driver and an application program, you may check device operation



After power connected : red
After application program opened : green

Caution

Any changes or modifications (including the antenna) made to this device that are not expressly approved by the manufacturer may void the user's authority to operate the equipment.

This equipment has been tested and found to comply with the limits for a Class B digital device, pursuant to part 15 of the FCC Rules. These limits are designed to provide reasonable protection against harmful interference in a residential installation.

This equipment generates uses and can radiate radio frequency energy and, if not installed and used in accordance with the instructions, may cause harmful interference to radio communications. However, there is no guarantee that interference will not occur in a particular installation. If this equipment does cause harmful interference to radio or television reception, which can be determined by turning the equipment off and on, the user is encouraged to try to correct the interference by one or more of the following measures:

- Reorient or relocate the receiving antenna.
- Increase the separation between the equipment and receiver.
- Connect the equipment into an outlet on a circuit different from that to which the receiver is connected.
- Consult the dealer or an experienced radio/TV technician for help.



Technical support

Tel : 031-752-6200

Fax : 031-752-6208

E-mail : support@fastpass.co.kr

Web : www.fastpass.co.kr