

2DH1_Ant1_Hop



2DH3_Ant1_Hop



2DH5_Ant1_Hop



3DH1_Ant1_Hop



3DH3_Ant1_Hop



3DH5_Ant1_Hop



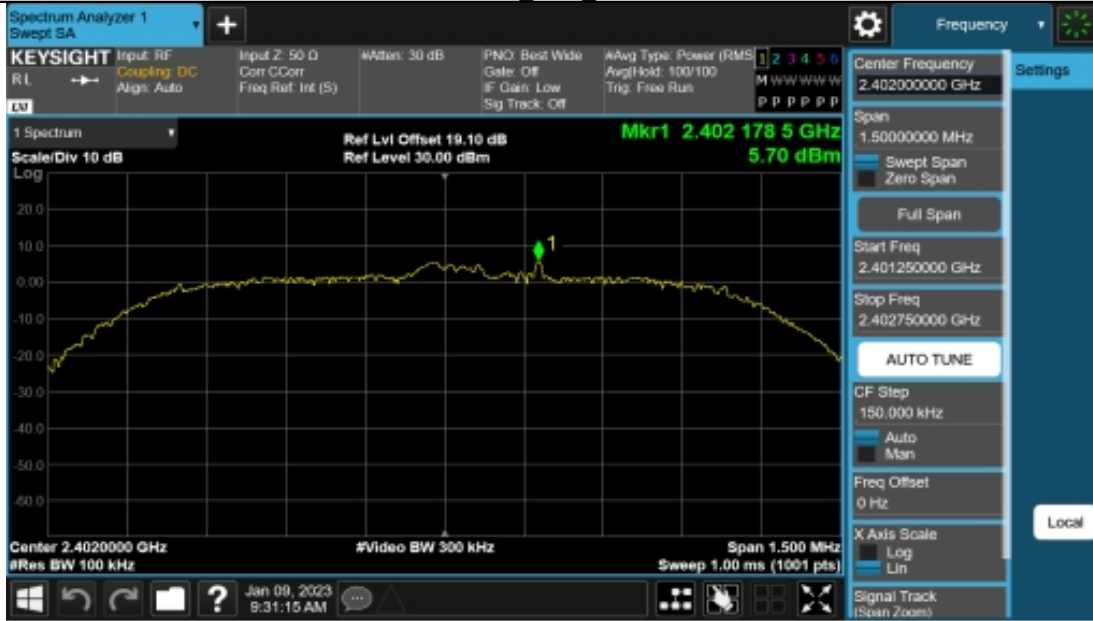
Appendix F: Reference level measurement
 Test Result

Test Mode	Antenna	Freq(MHz)	Max.Point[MHz]	Result[dBm]
DH5#	Ant1	2402	2402.00	5.94
		2441	2441.00	5.34
		2480	2480.17	5.43
2DH5	Ant1	2402	2402.18	5.70
		2441	2440.85	5.42
		2480	2479.84	5.45
3DH5	Ant1	2402	2401.85	6.09
		2441	2440.85	5.51
		2480	2479.85	5.60

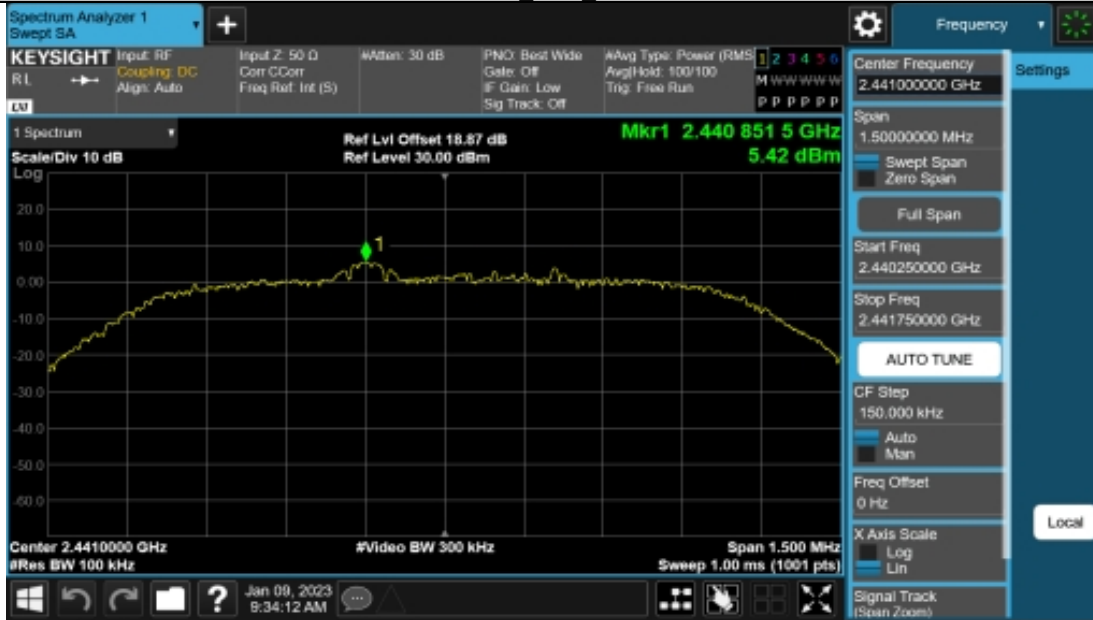
Test Graphs



2DH5 Ant1 2402



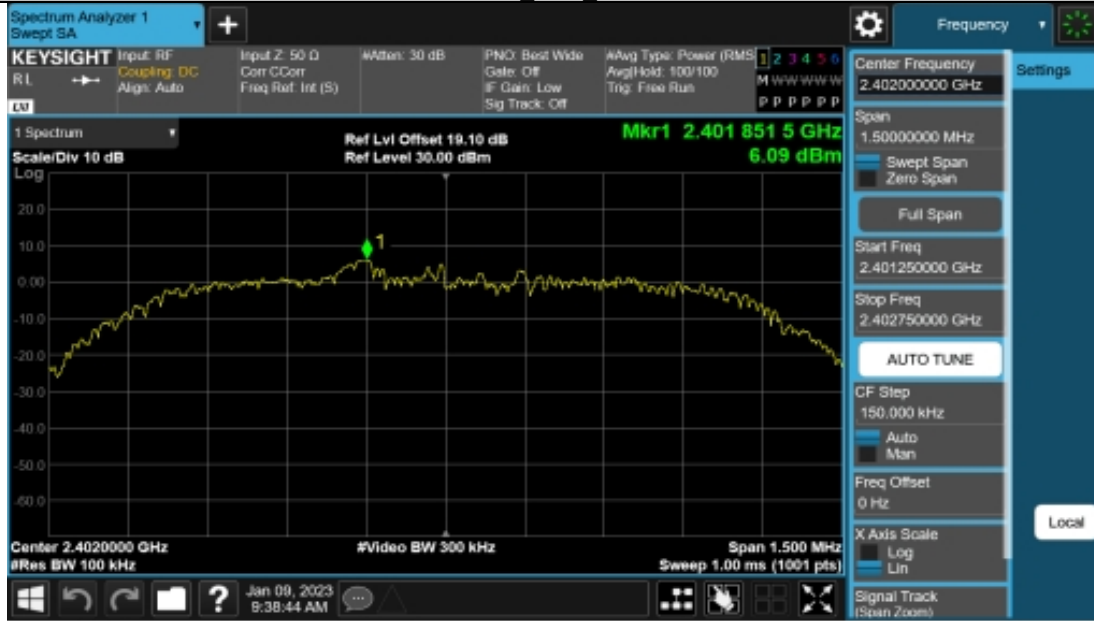
2DH5 Ant1 2441



2DH5 Ant1 2480



3DH5 Ant1 2402



3DH5 Ant1 2441



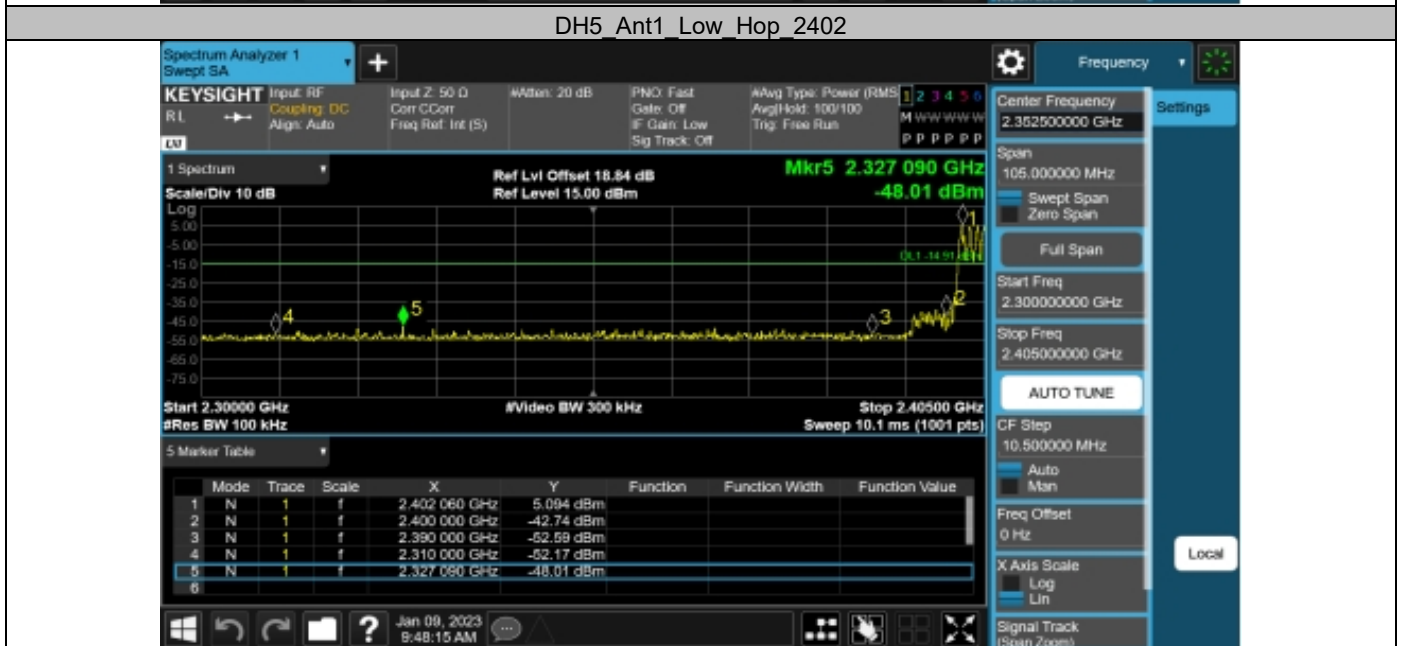
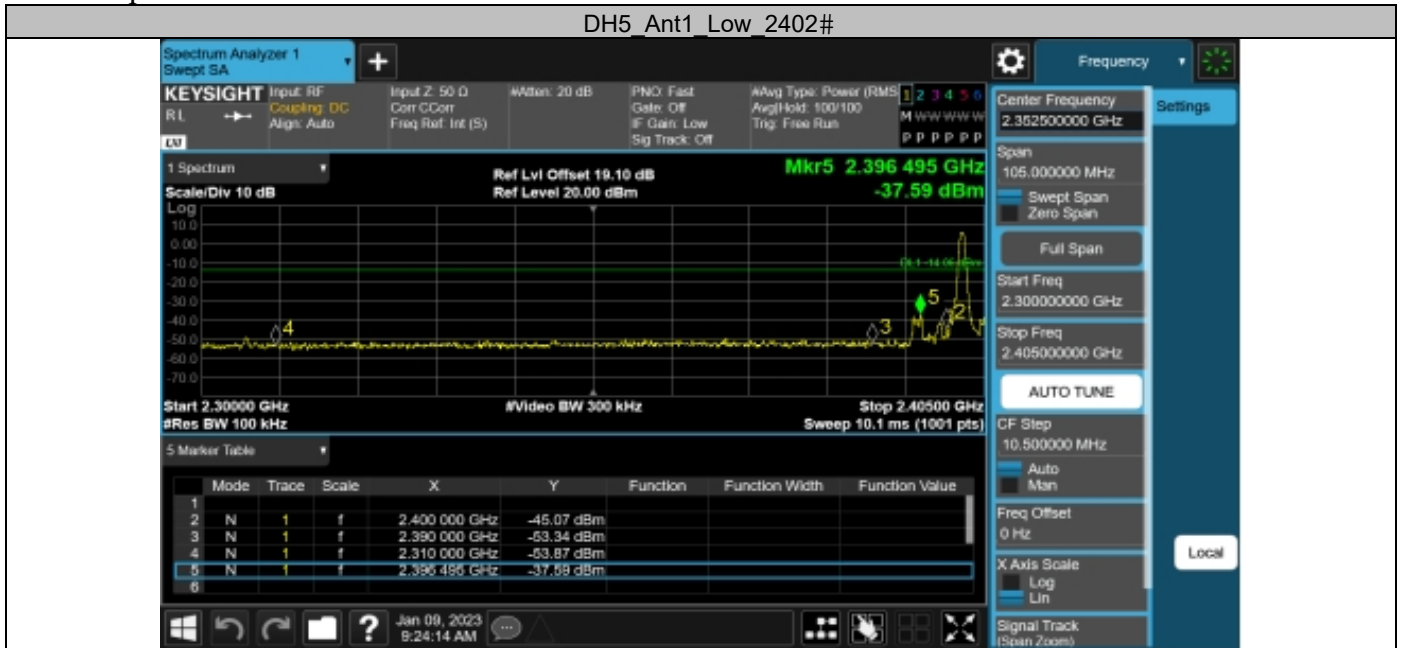
3DH5 Ant1 2480



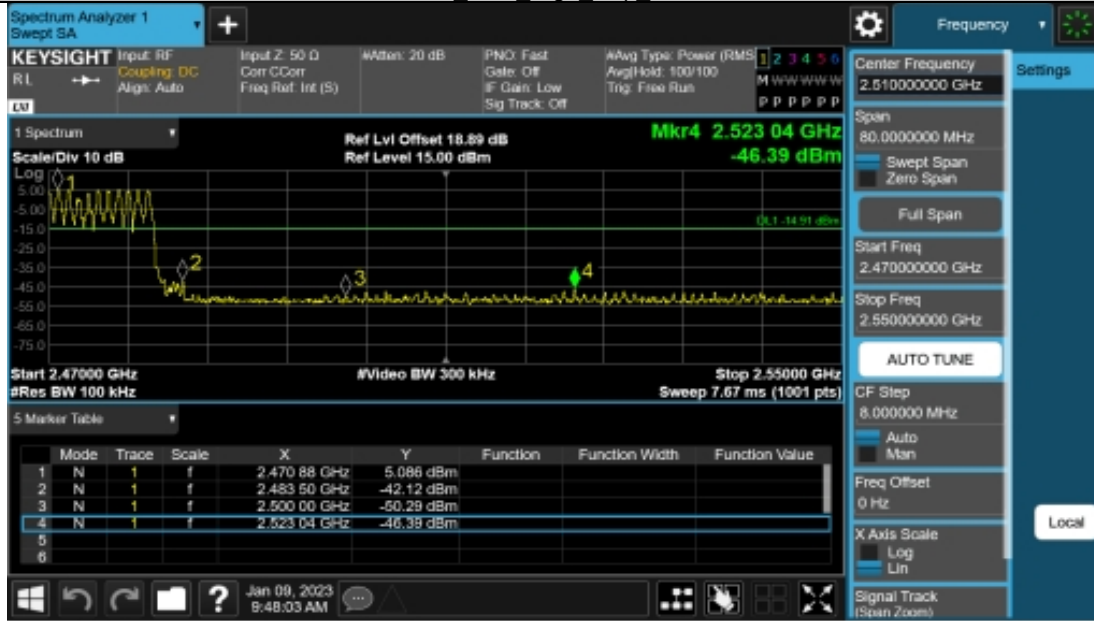
Appendix G: Band edge measurements
Test Result

Test Mode	Antenna	Ch Name	Freq(MHz)	Ref Level [dBm]	Result [dBm]	Limit [dBm]	Verdict
DH5#	Ant1	Low	2402	5.94	-37.59	≤-14.06	PASS
		High	2480	5.43	-41.58	≤-14.57	PASS
		Low	Hop_2402	5.09	-48.01	≤-14.91	PASS
		High	Hop_2480	5.09	-46.39	≤-14.91	PASS
2DH5	Ant1	Low	2402	5.70	-37.11	≤-14.3	PASS
		High	2480	5.45	-43.64	≤-14.55	PASS
		Low	Hop_2402	1.98	-47.97	≤-18.02	PASS
		High	Hop_2480	5.27	-47.69	≤-14.73	PASS
3DH5	Ant1	Low	2402	6.09	-36.42	≤-13.91	PASS
		High	2480	5.60	-41.7	≤-14.4	PASS
		Low	Hop_2402	-0.01	-50.6	≤-20.01	PASS
		High	Hop_2480	5.34	-46.99	≤-14.66	PASS

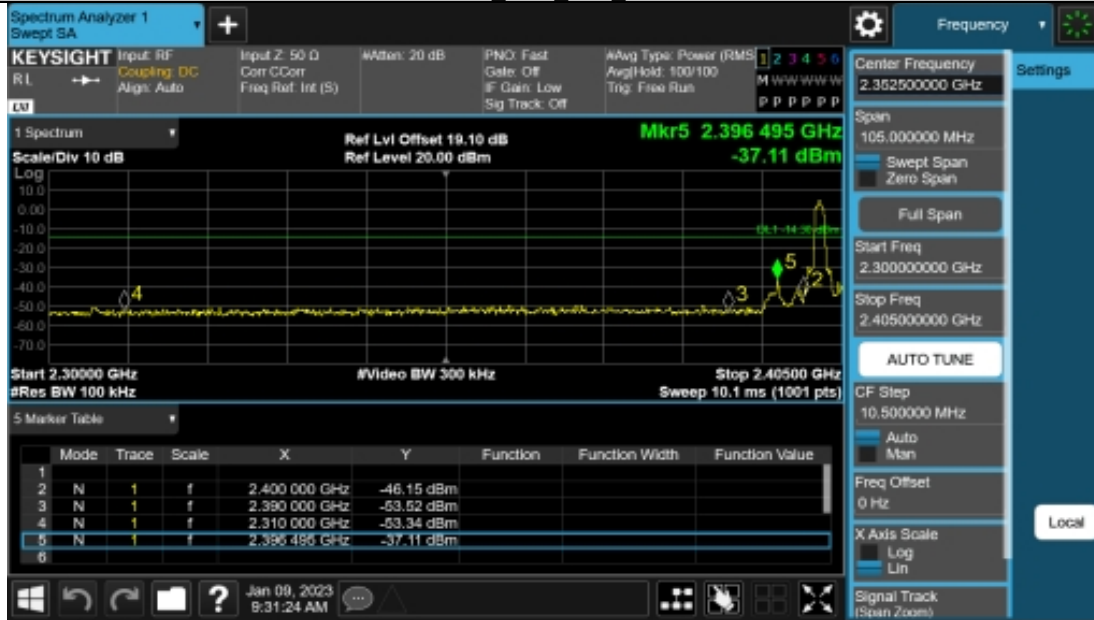
Test Graphs



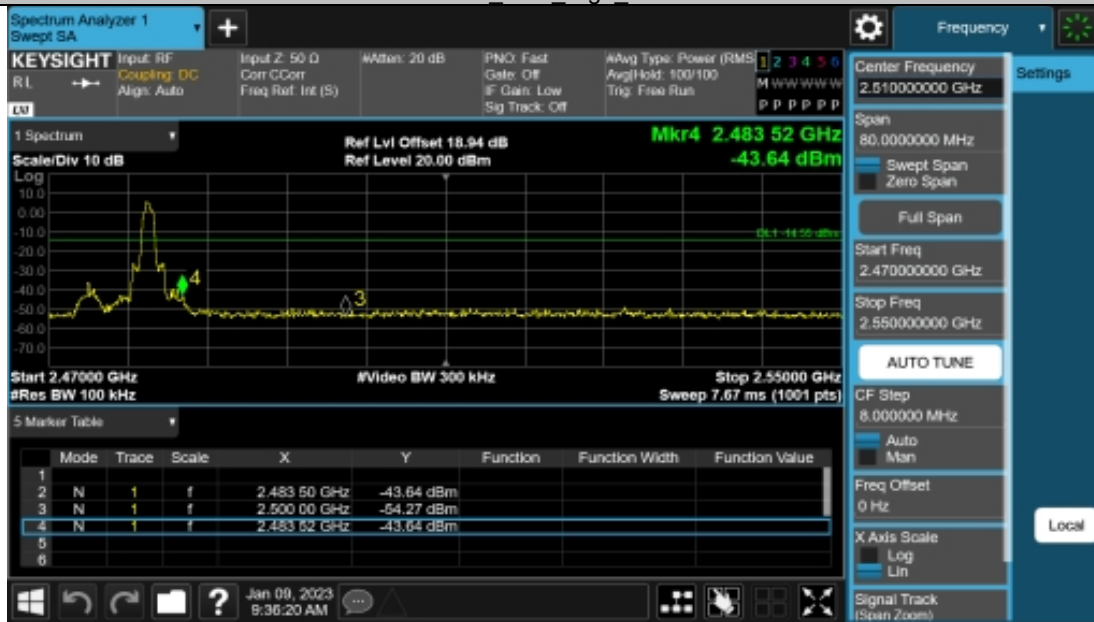
DH5 Ant1 High Hop 2480



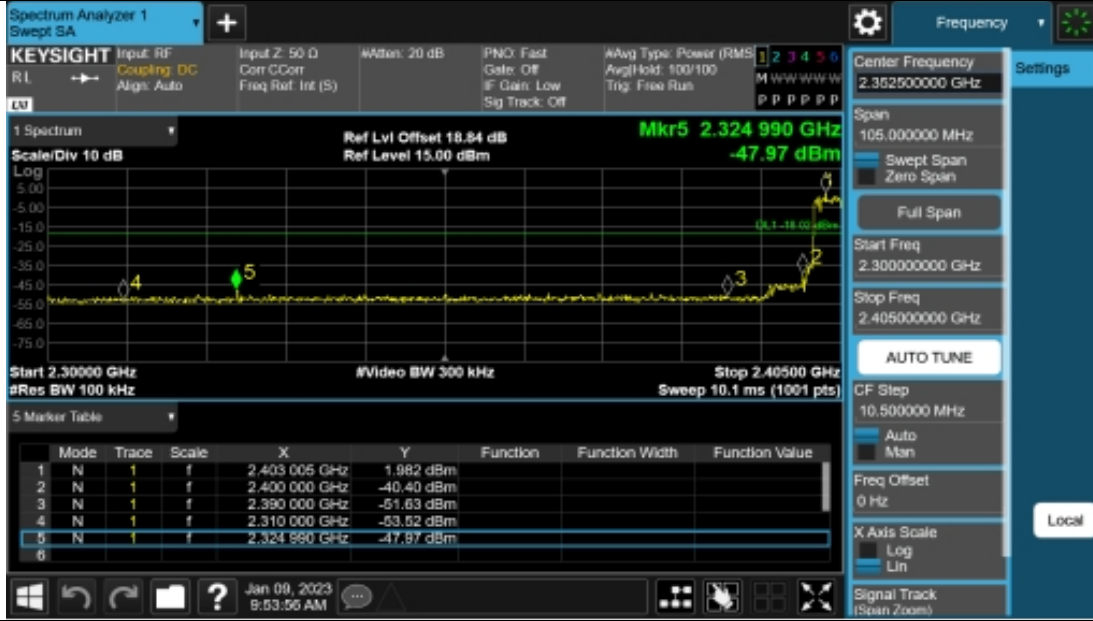
2DH5 Ant1 Low 2402



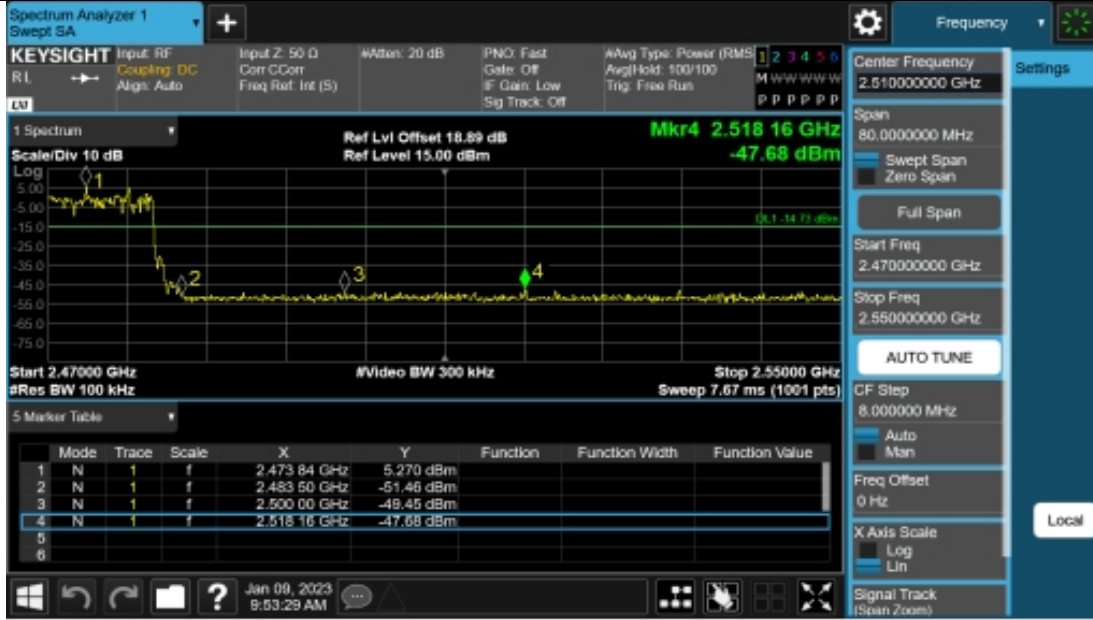
2DH5 Ant1 High 2480



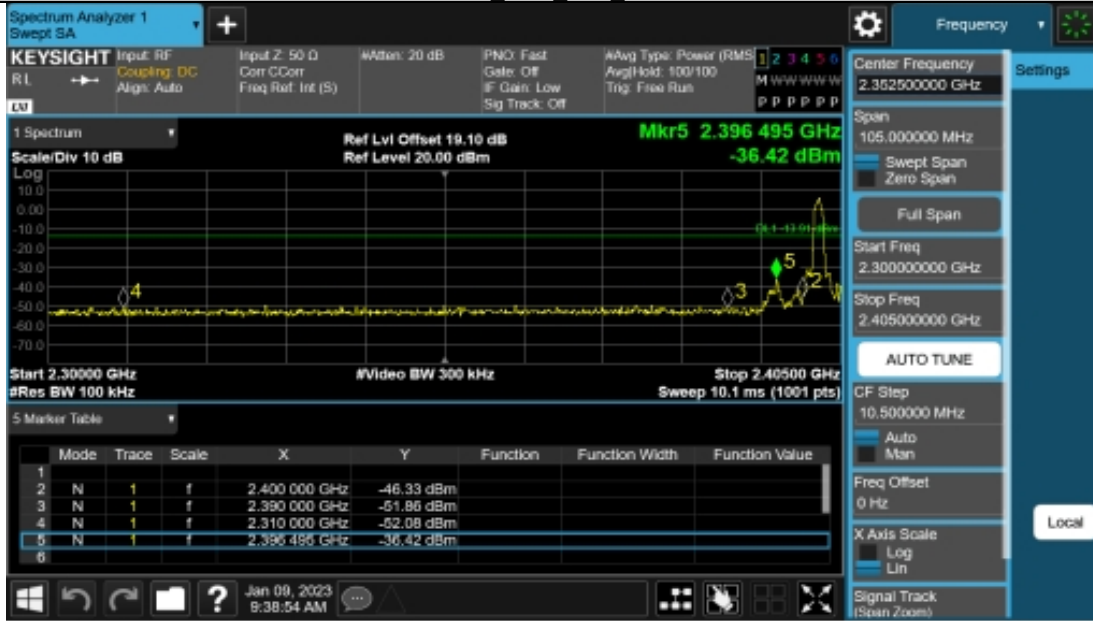
2DH5 Ant1 Low Hop 2402



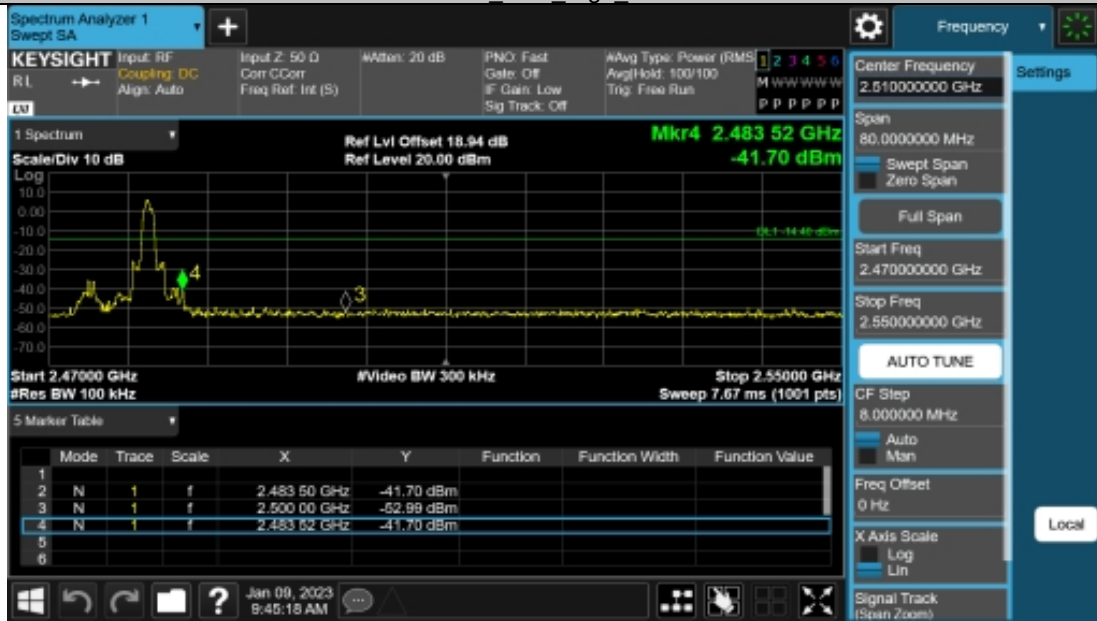
2DH5 Ant1 High Hop 2480



3DH5 Ant1 Low 2402



3DH5 Ant1 High 2480



3DH5 Ant1 Low Hop 2402



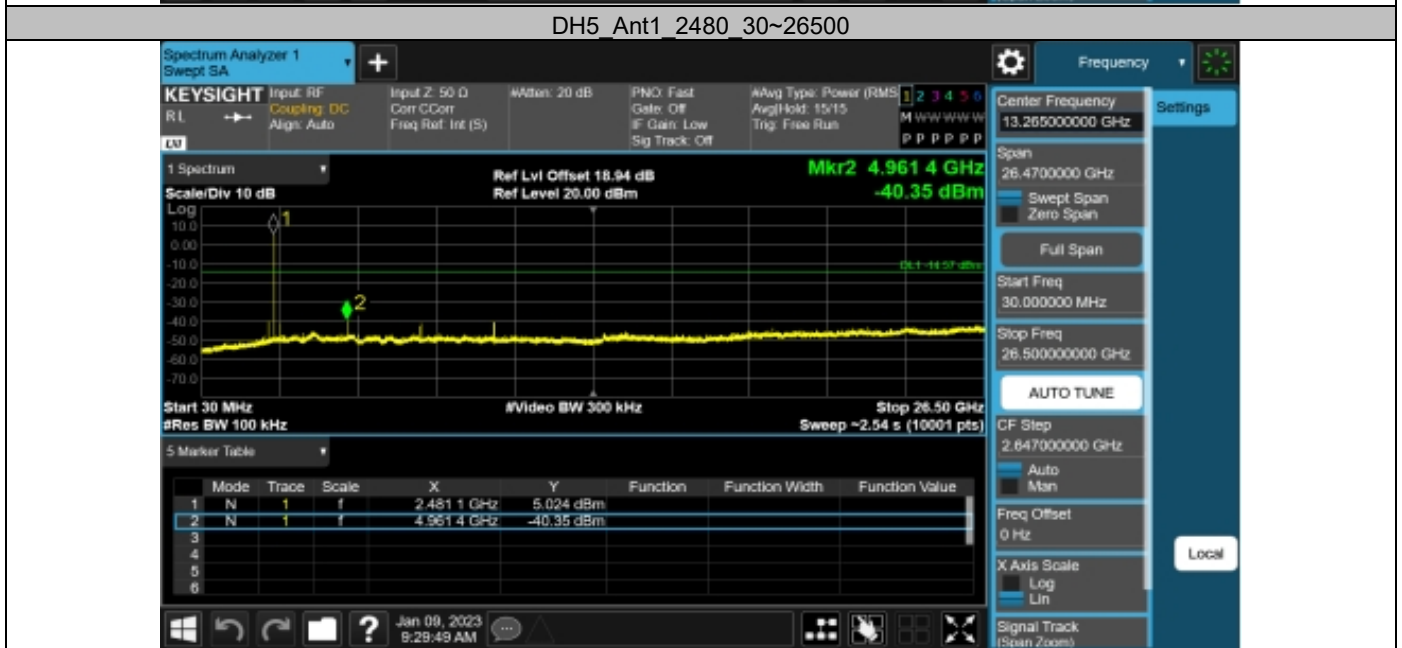
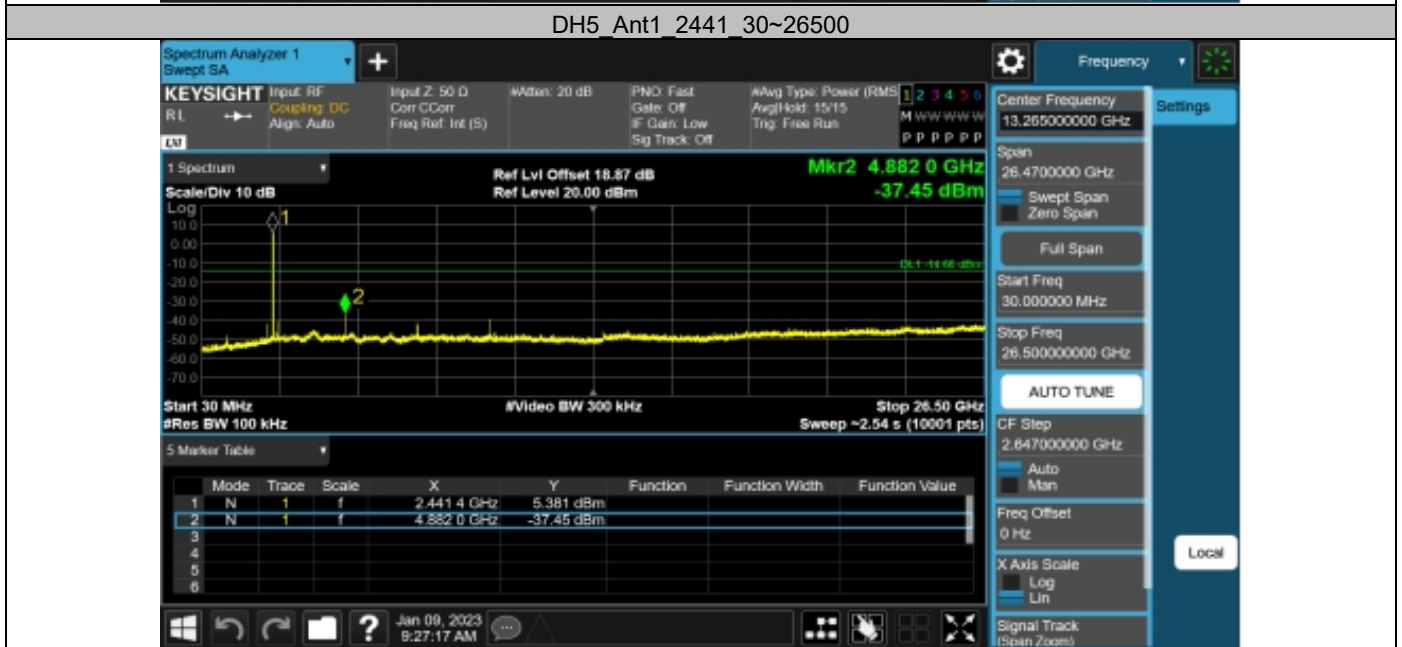
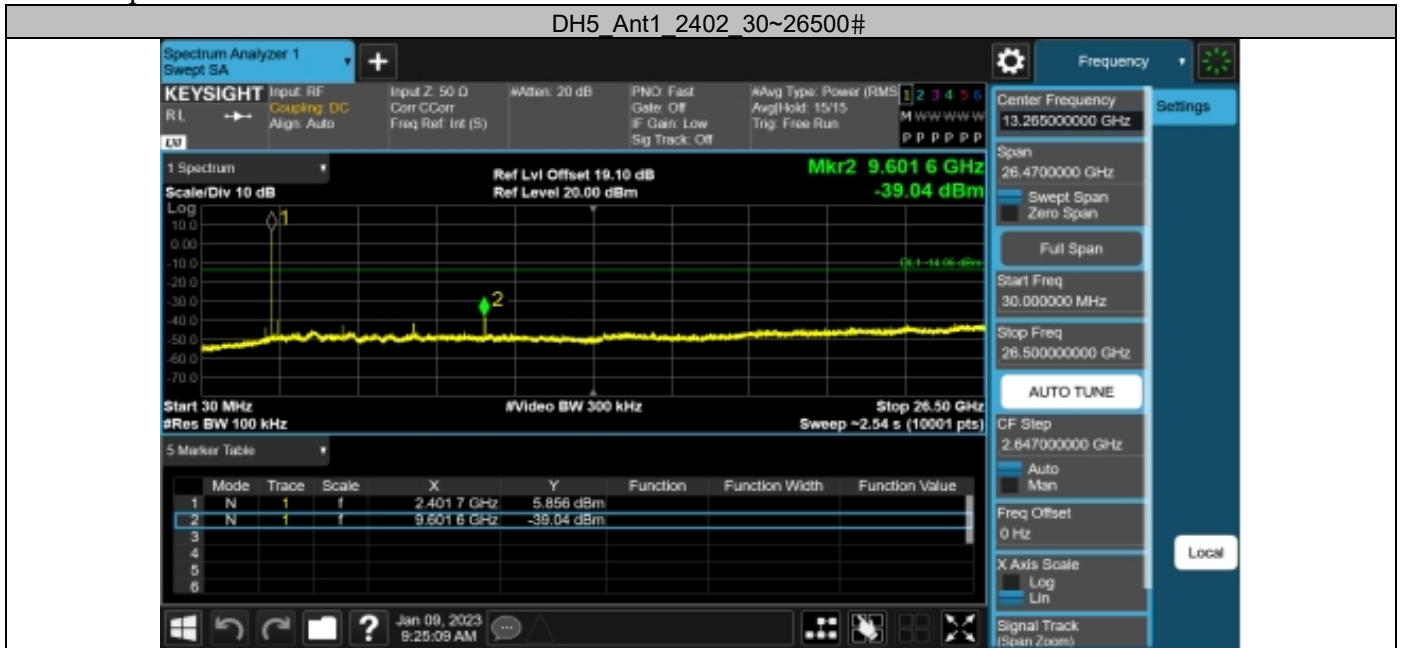
3DH5 Ant1 High Hop 2480

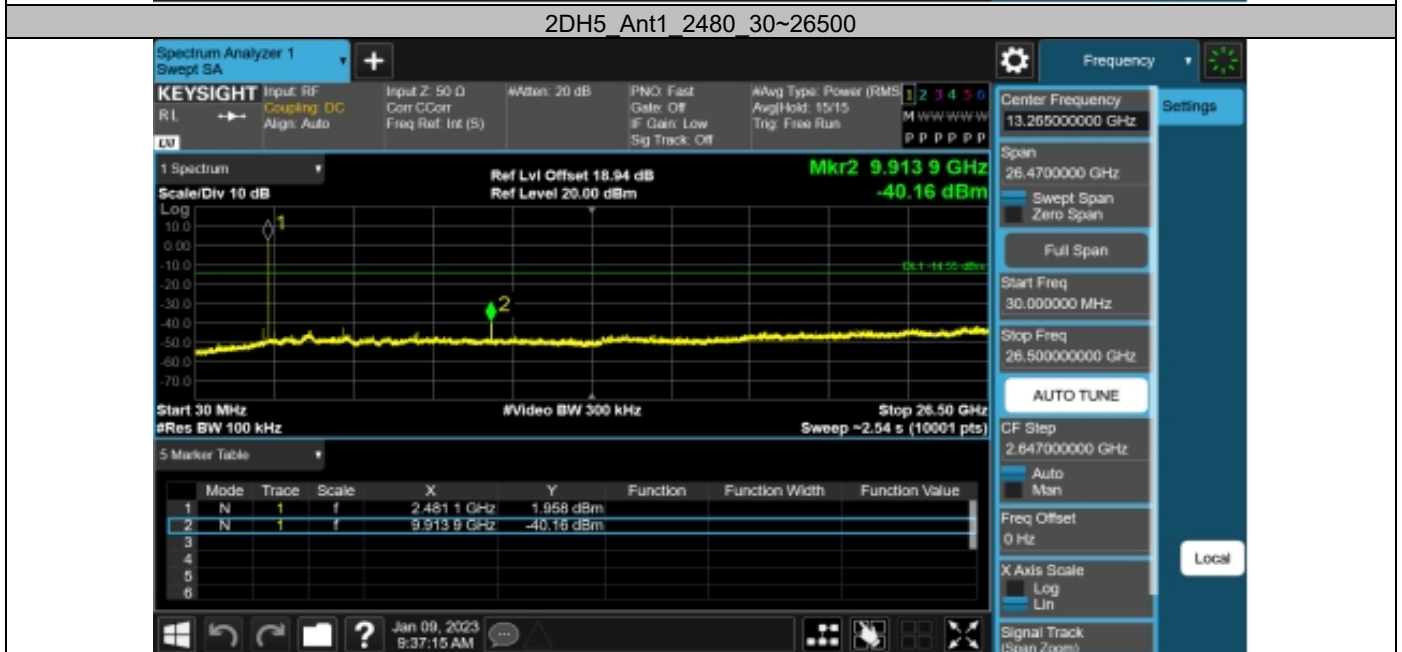
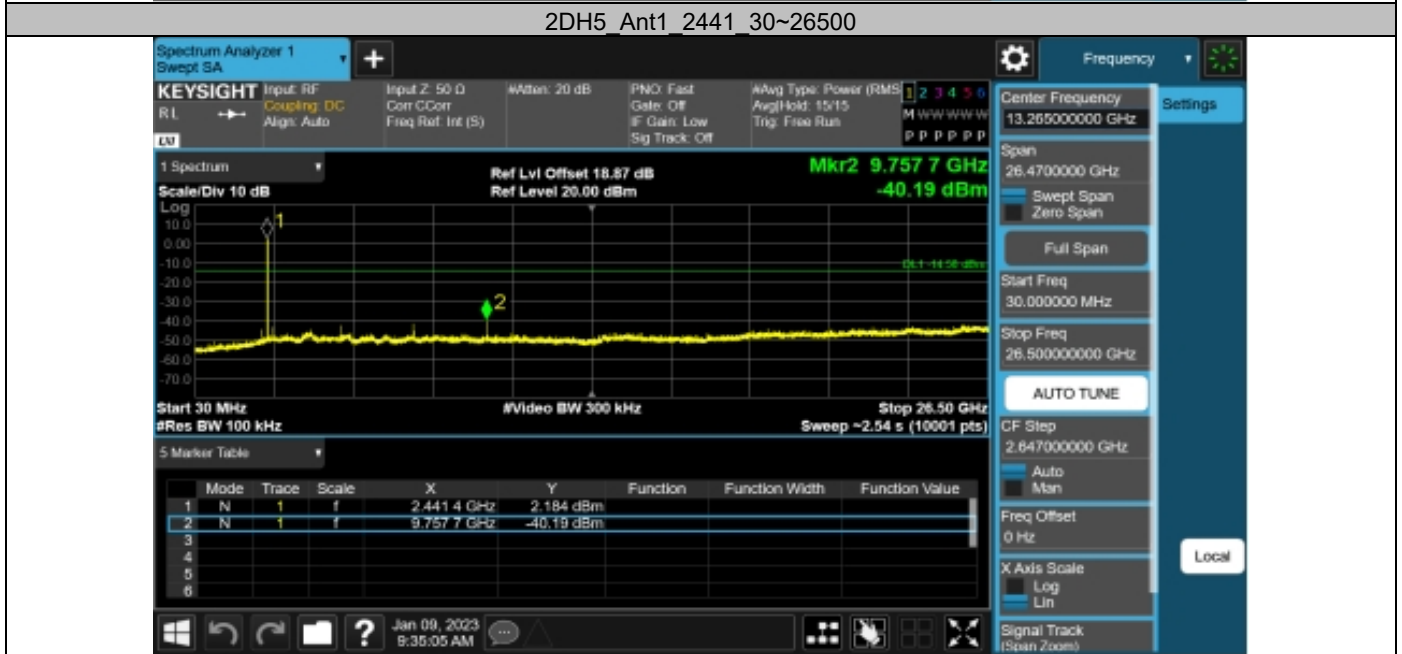


Appendix H: Conducted Spurious Emission Test Result

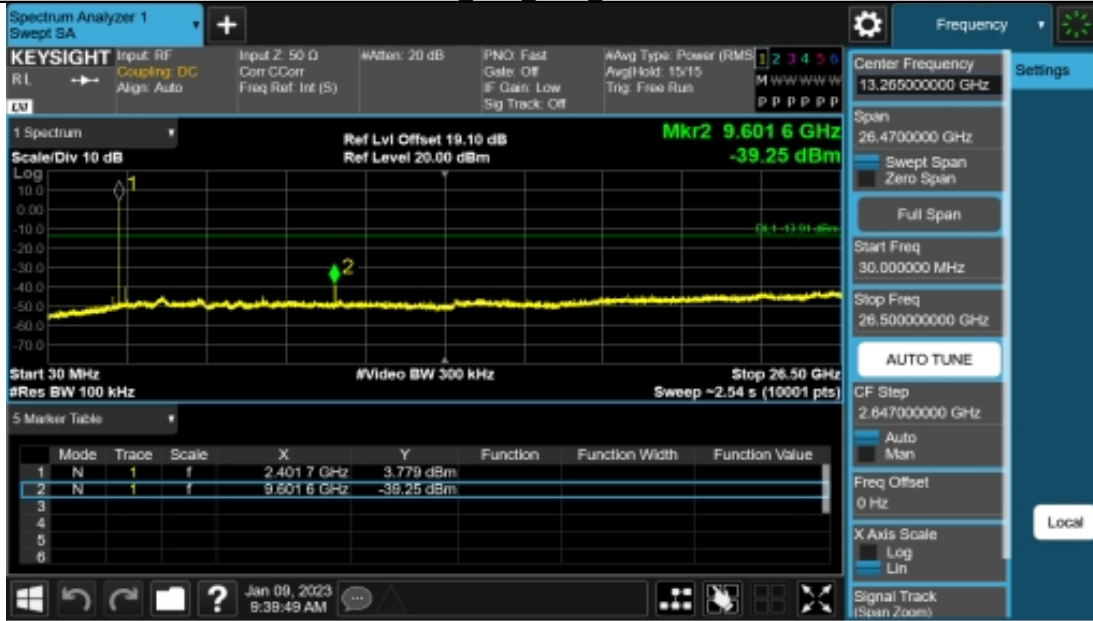
Test Mode	Antenna	Freq(MHz)	Freq Range [MHz]	Ref Level [dBm]	Result [dBm]	Limit [dBm]	Verdict
DH5#	Ant1	2402	30~26500	5.94	-39.04	≤-14.06	PASS
		2441	30~26500	5.34	-37.45	≤-14.66	PASS
		2480	30~26500	5.43	-40.35	≤-14.57	PASS
2DH5	Ant1	2402	30~26500	5.70	-39.83	≤-14.3	PASS
		2441	30~26500	5.42	-40.19	≤-14.58	PASS
		2480	30~26500	5.45	-40.16	≤-14.55	PASS
3DH5	Ant1	2402	30~26500	6.09	-39.25	≤-13.91	PASS
		2441	30~26500	5.51	-40.3	≤-14.49	PASS
		2480	30~26500	5.60	-39.9	≤-14.4	PASS

Test Graphs

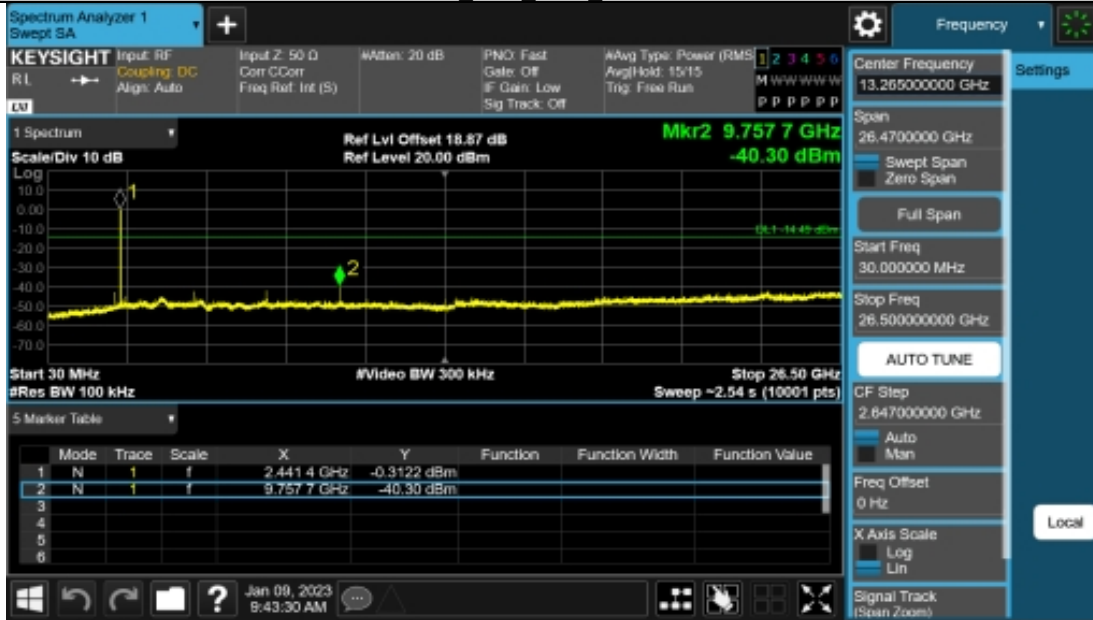




3DH5 Ant1 2402 30~26500



3DH5 Ant1 2441 30~26500



3DH5 Ant1 2480 30~26500

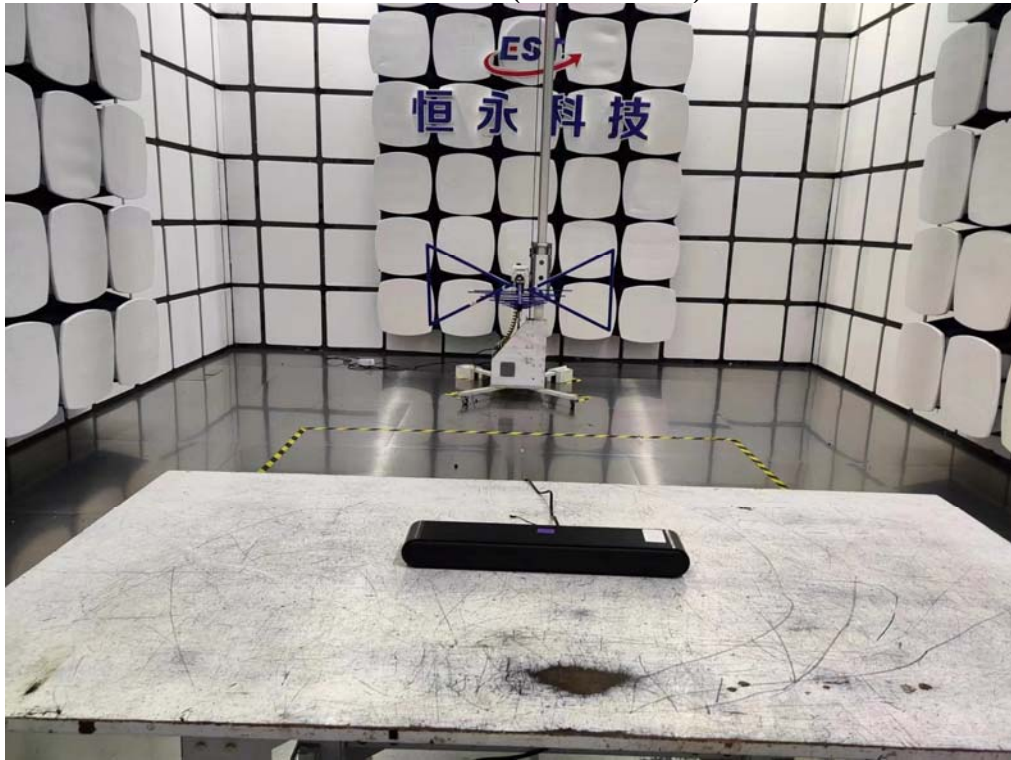


14. TEST SETUP PHOTO

Conducted Test



Radiated Test (Below 1GHz)

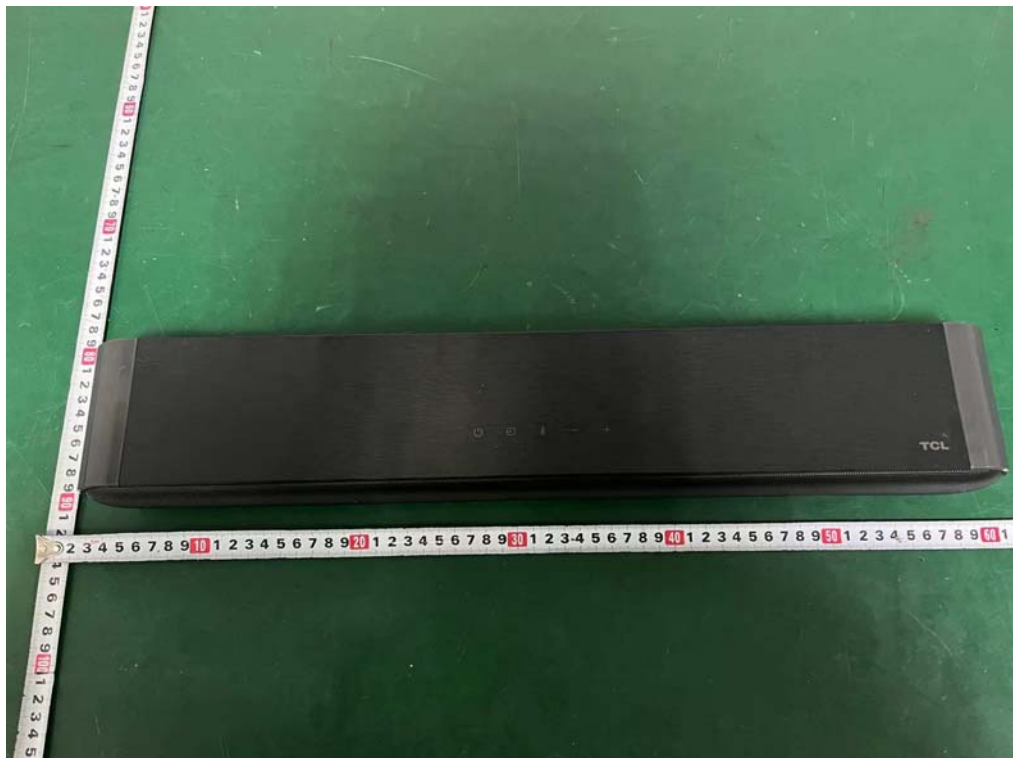
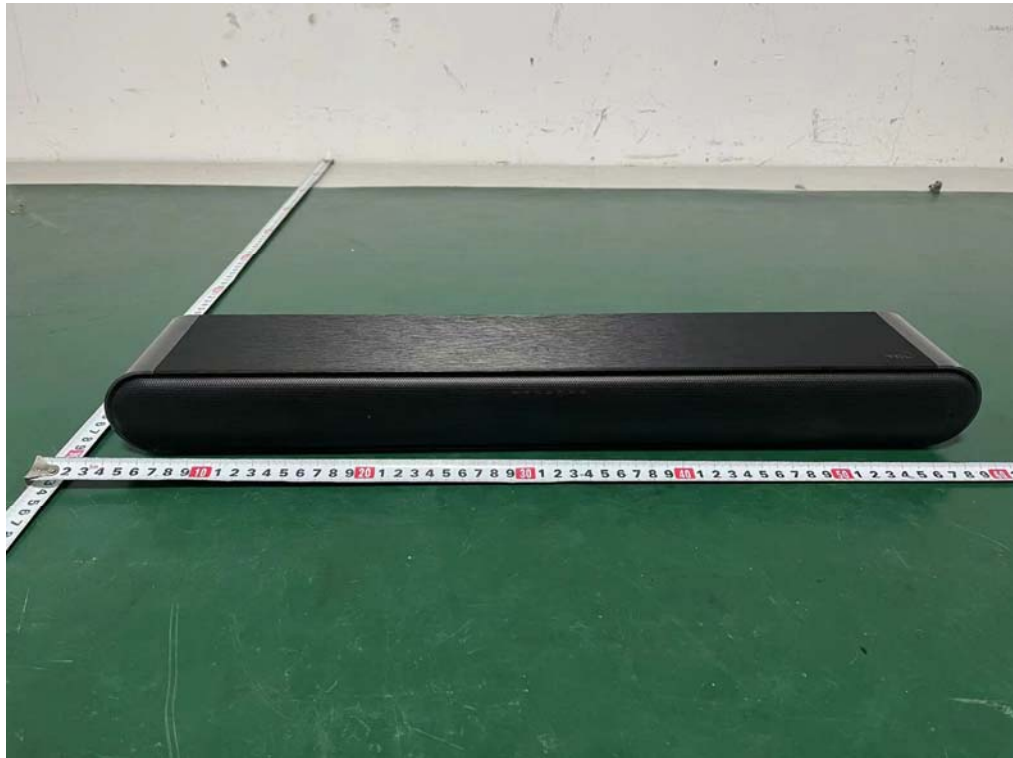


Radiated Test (Above 1GHz)

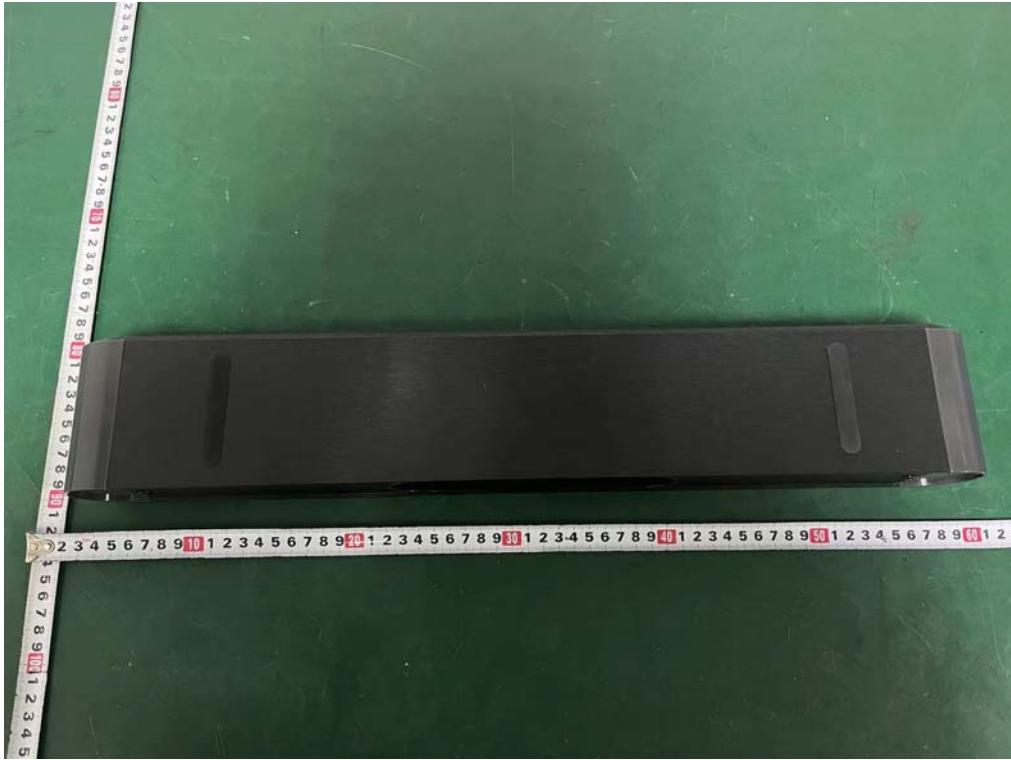


15. EUT PHOTO

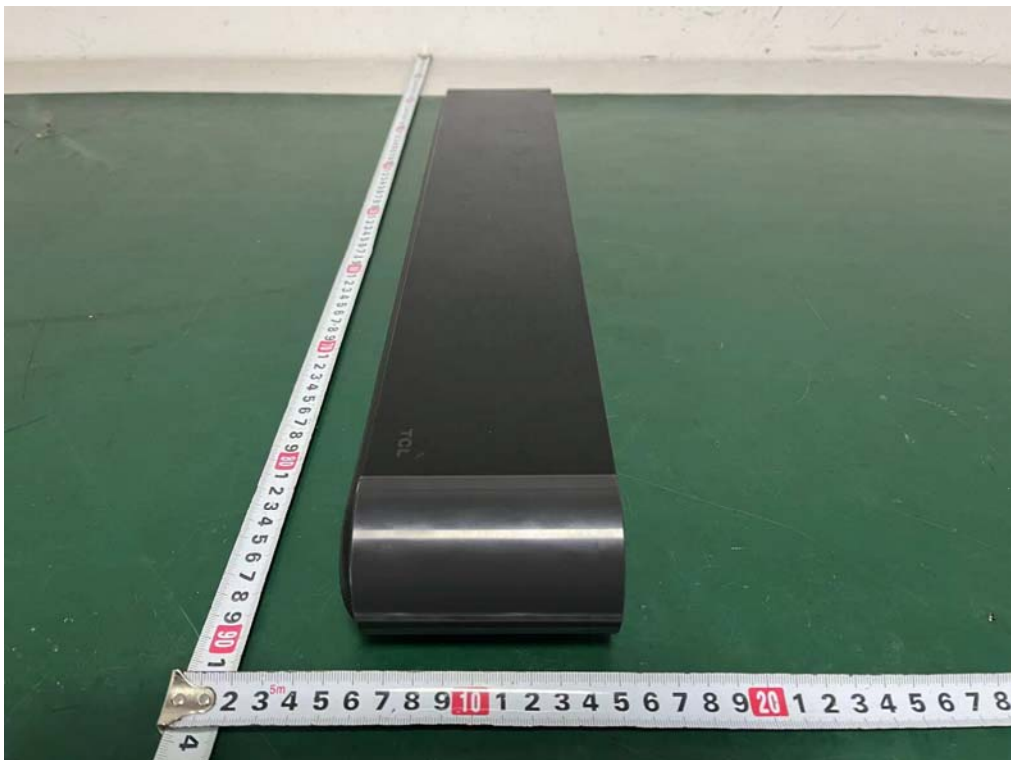
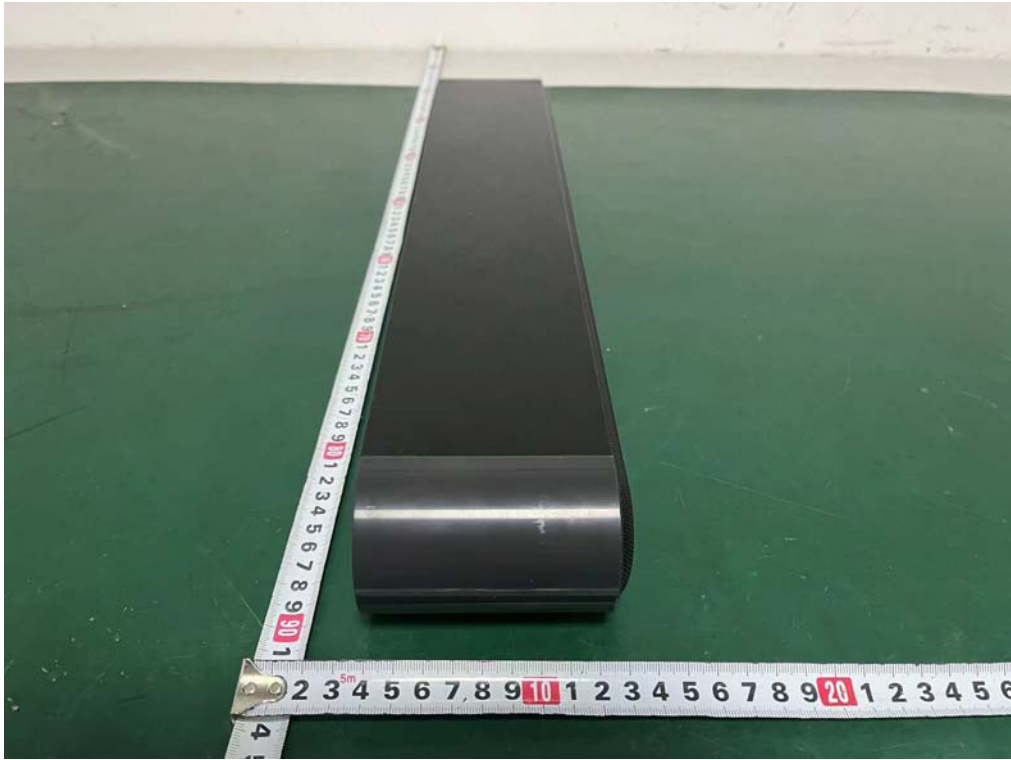
External Photos
M/N: S642W



External Photos
M/N: S642W



External Photos
M/N: S642W



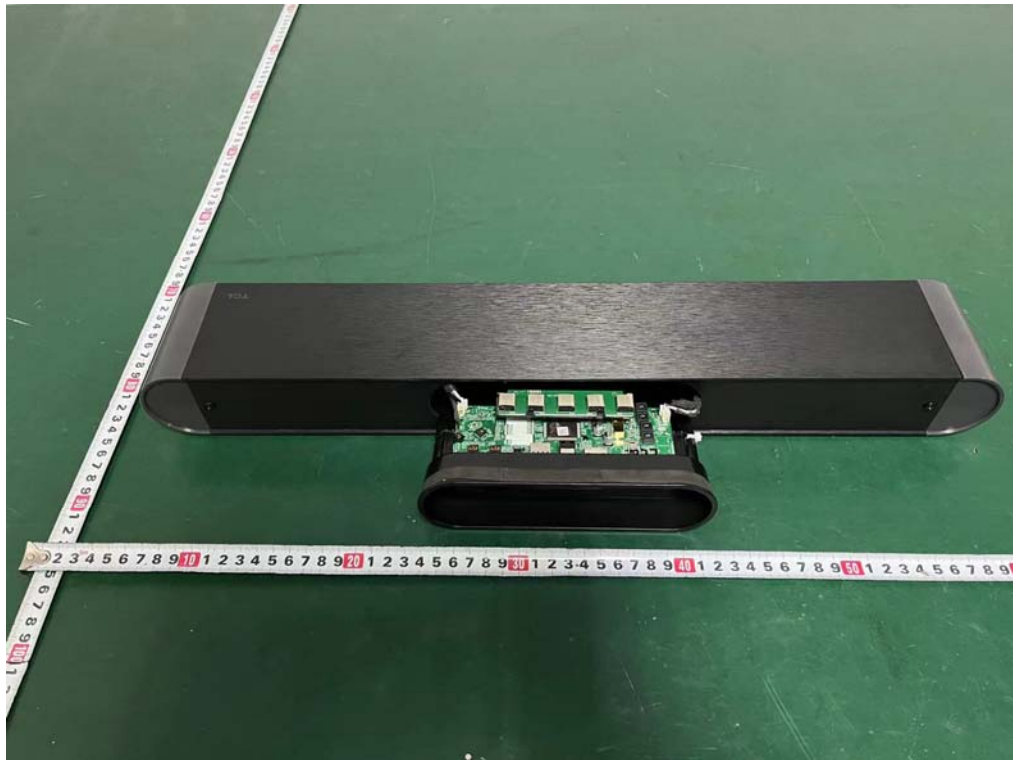
External Photos
M/N: S642W



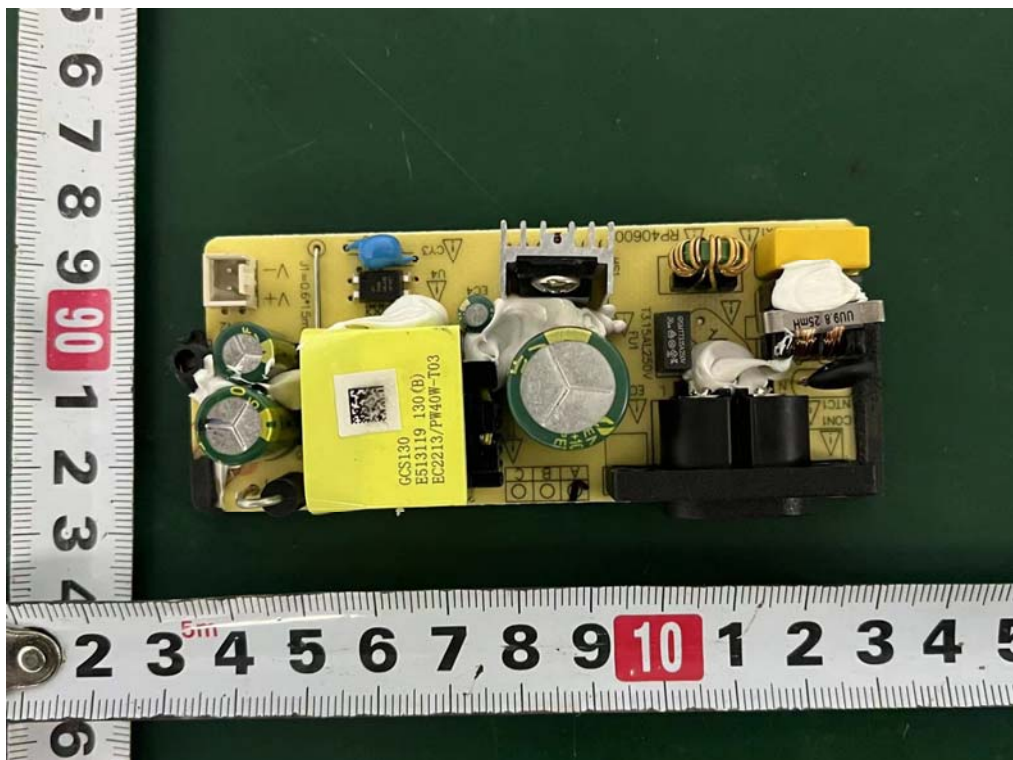
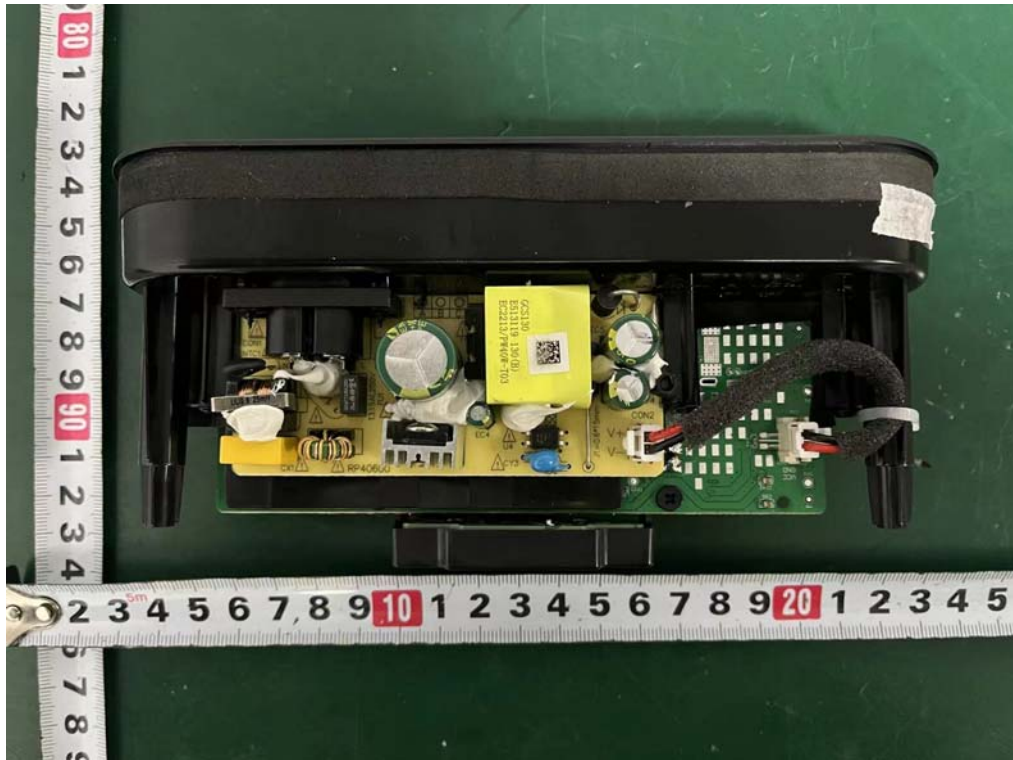
External Photos
M/N: S642W



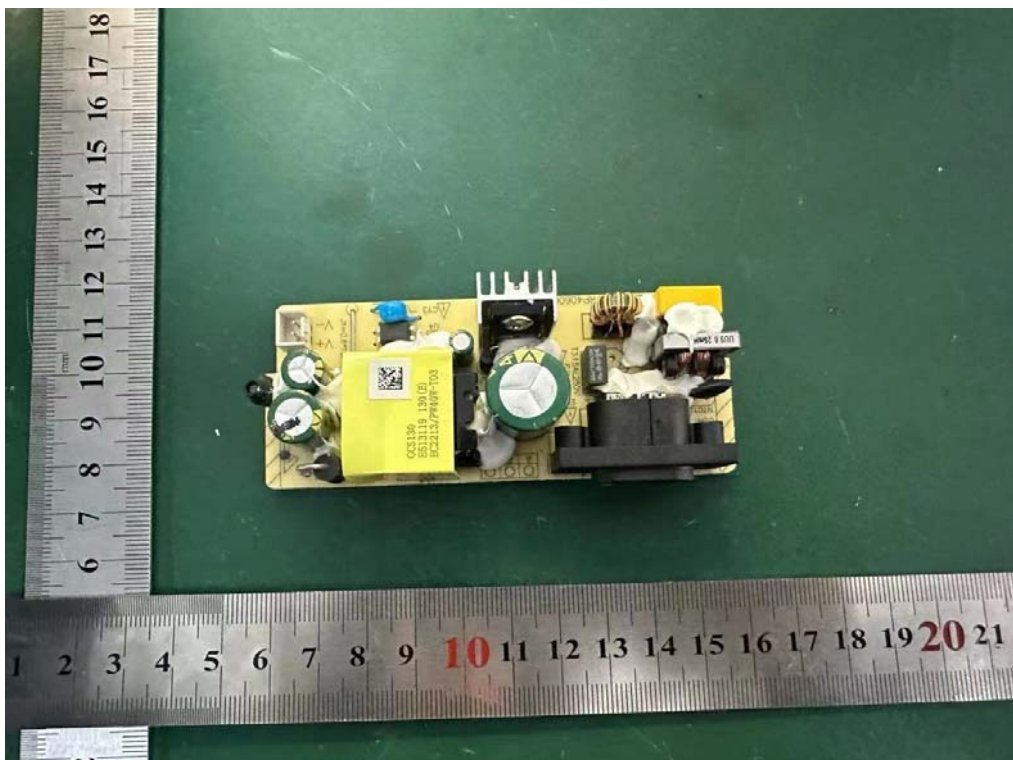
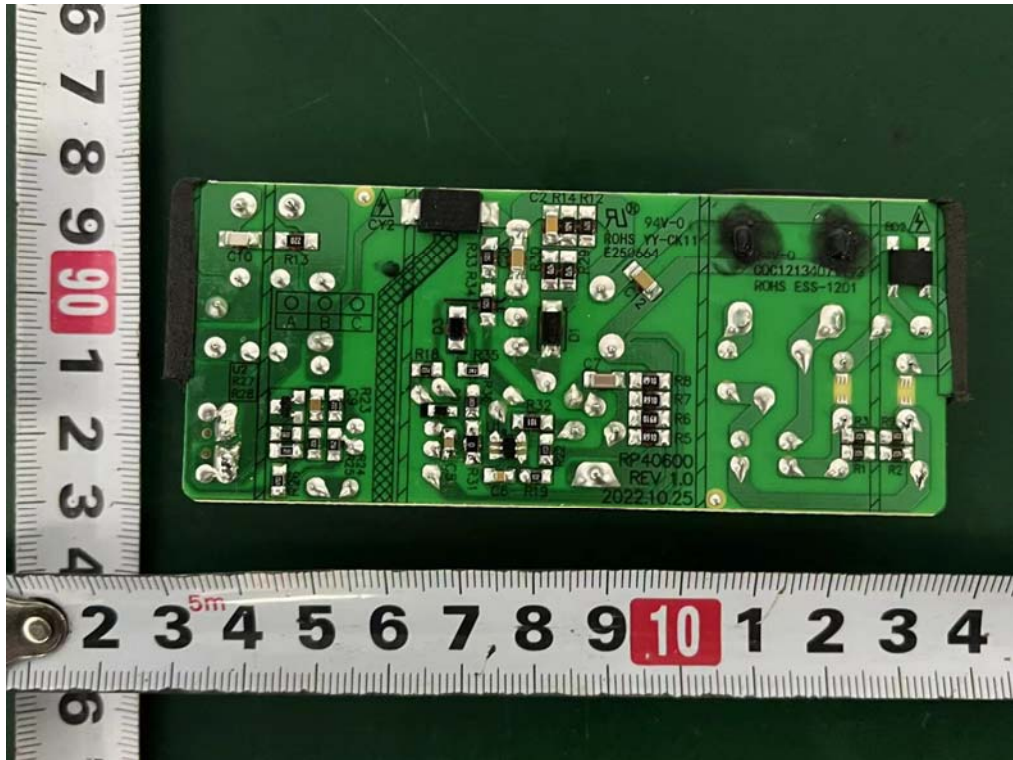
Internal Photos
M/N: S642W



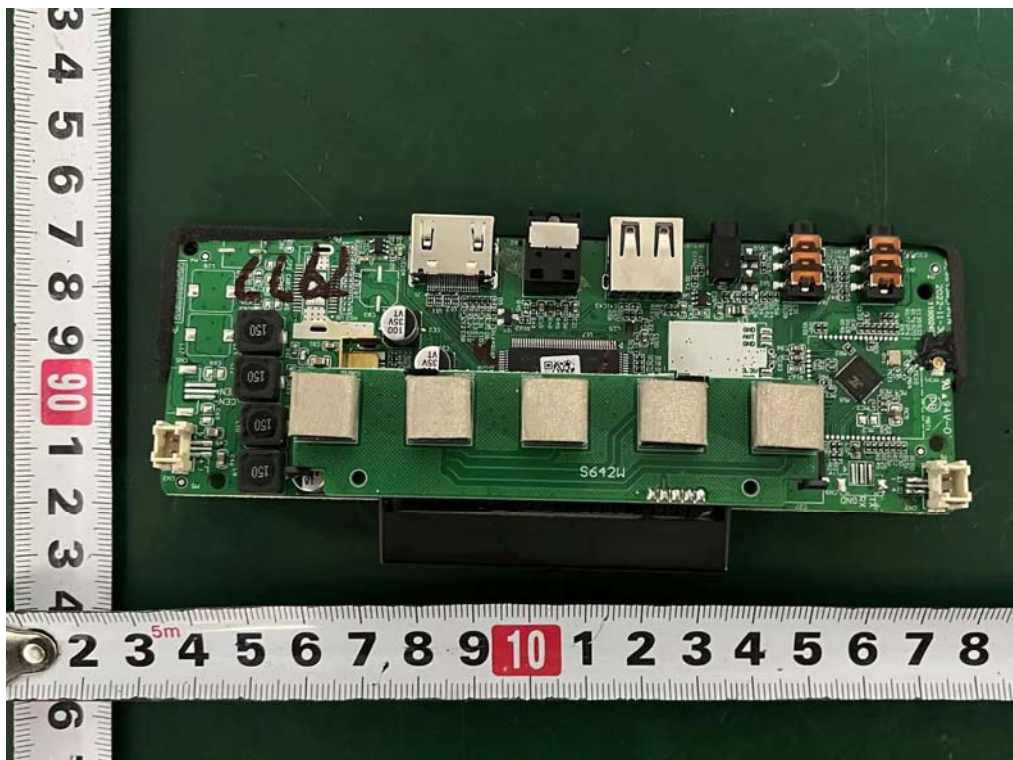
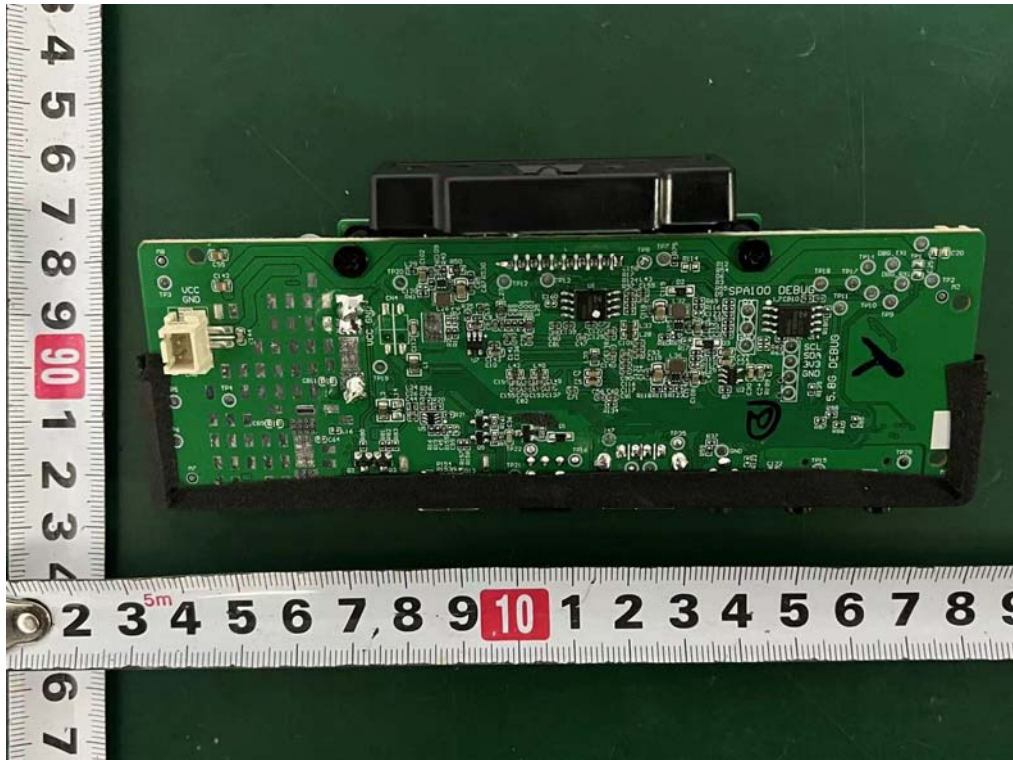
Internal Photos
M/N: S642W



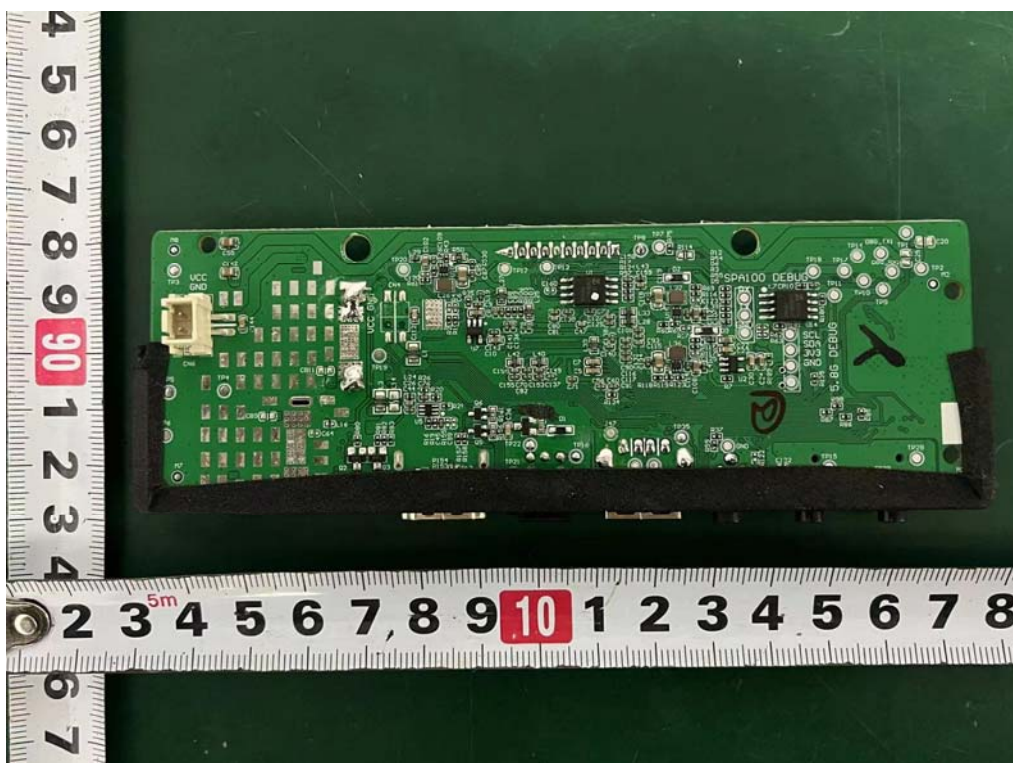
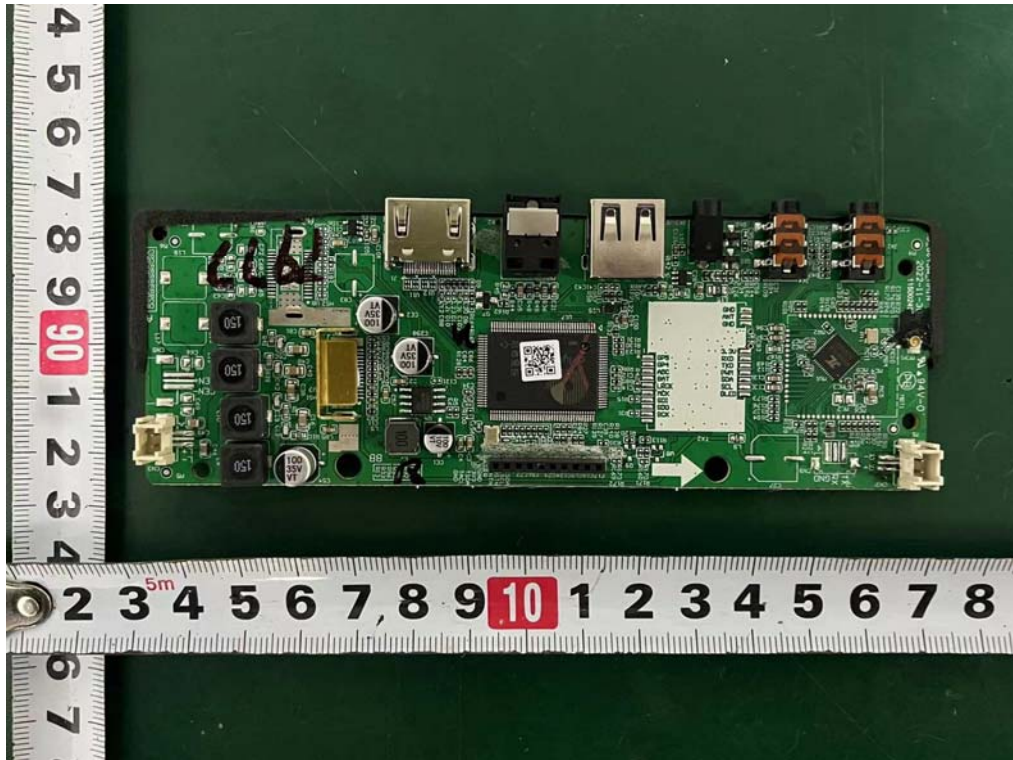
Internal Photos
M/N: S642W



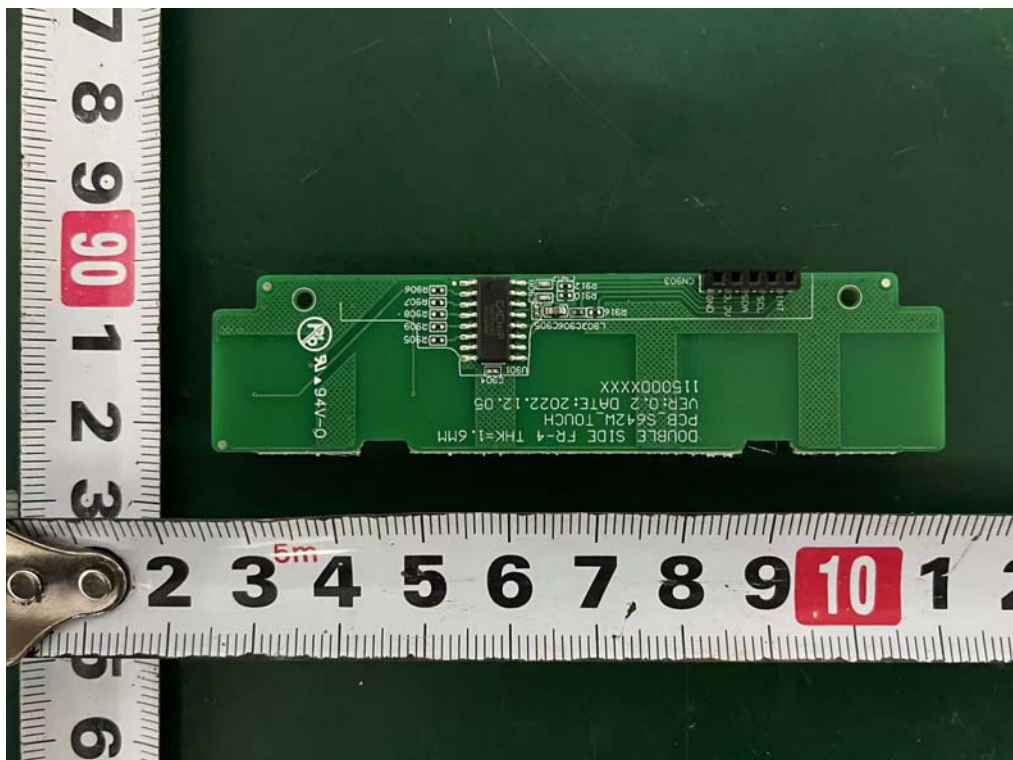
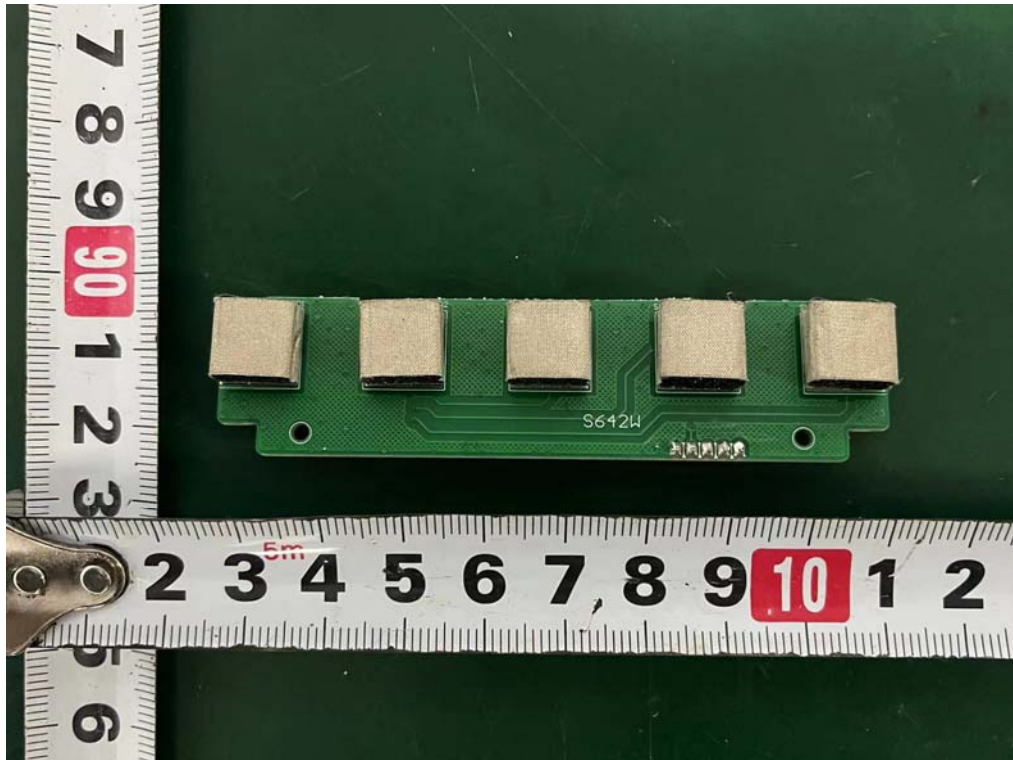
Internal Photos
M/N: S642W



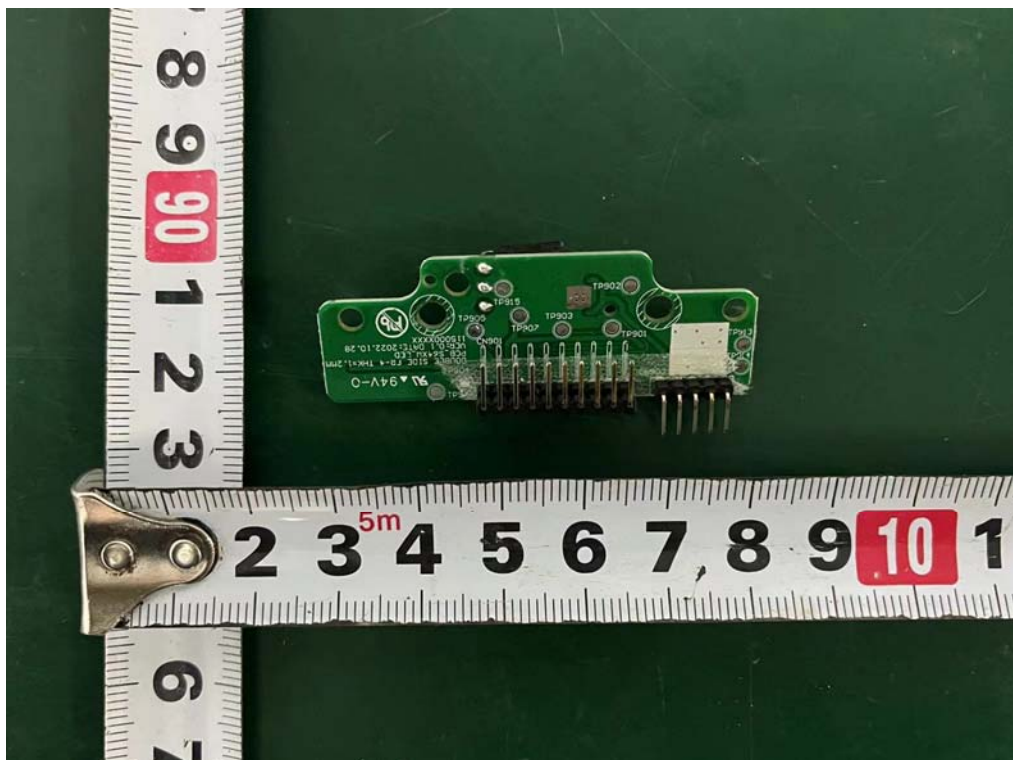
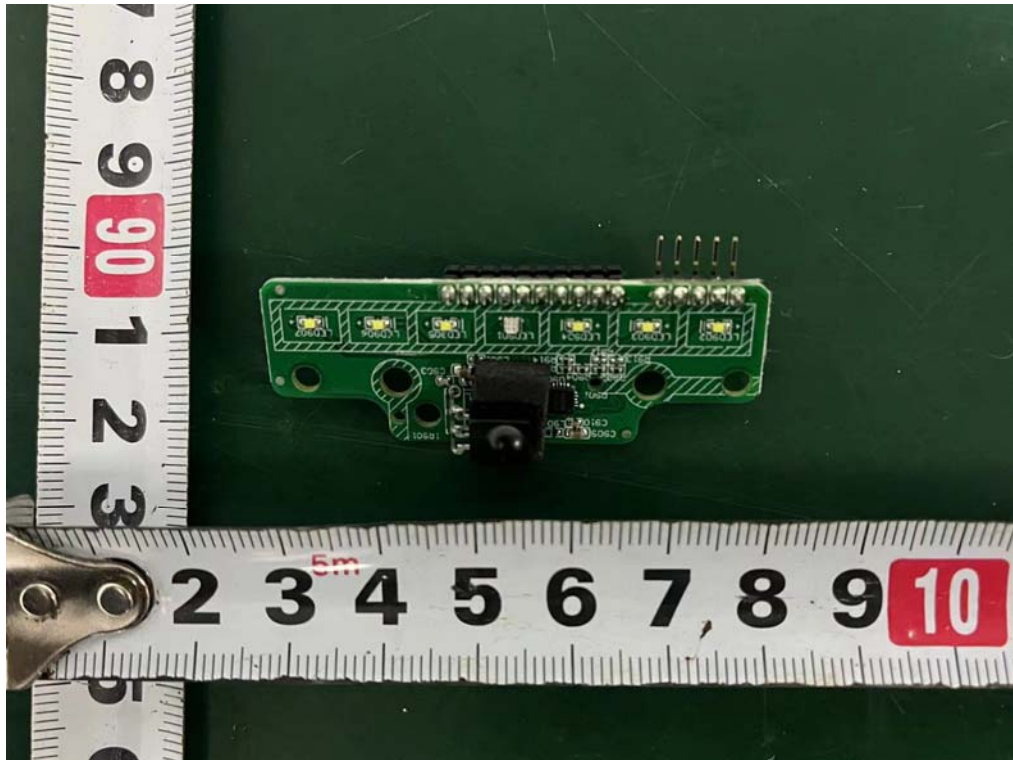
Internal Photos
M/N: S642W



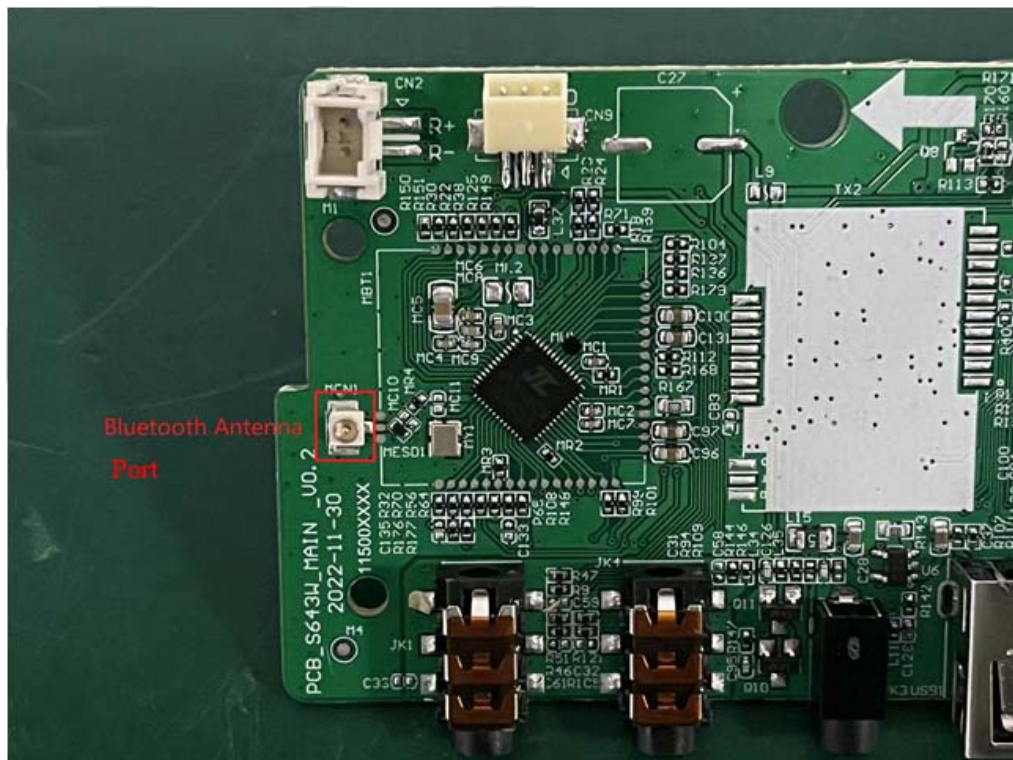
Internal Photos
M/N: S642W



Internal Photos
M/N: S642W



Internal Photos
M/N: S642W



End of Test Report