

# FUTINA

## A Product You Can Trust

### Product Manual

#### Wifi Smart Converter

Thank you for choosing FUTINA Smart converter. To ensure the proper application of our product, please read through the following information before installation and use.

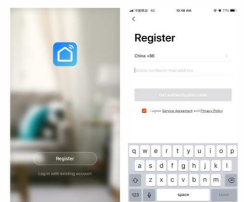
1. This product has a function of power adapter, with the output of 5V, 2A.
2. This product has a night light, press the button on the left side to switch on/off the light, and press it for 5 seconds to let it enter the setup mode.
3. There is a smart control function for the two sockets. The rated output current of the socket is 16A. There is a switch button on the left side of the product.

Use your phone to scan the QR code below to search "smart life" in application market to download and install the App.

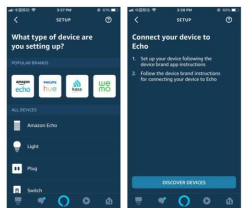


**Step 1: Register and login "smart life" APP.**  
If you don't have the account of "Smart life" APP, register an account or sign in with cell phone number verification code. This page describes the Registration process.

1. Click "Register" in the front page.
2. The system automatically determines your country / area. You can also select your country code by yourself. Enter the mobile phone number/E-mail and click "Next".
3. If you enter the mobile phone number, please enter the verification code in the message, and the password, click "Confirm" to finish your registration.
4. If you enter the E-mail, please enter the password, click "Confirm" to finish your registration.
5. Click "Create family" and follow the instruction.



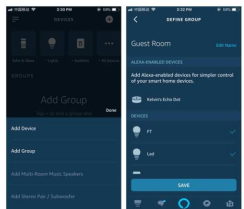
1



Remark: Every time the name of the device is changed in the smart life app, Echo has to discover the device again, otherwise you can't control the device through Echo.

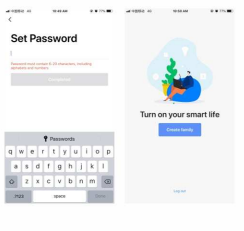
**3.2 Voice control**  
Now you can use Echo to control your smart device. You can use below orders to control your device (take the bedroom light as an example).  
Alexa, turn on/off the bedroom light;  
Alexa, set the bedroom light to 50 percent;  
Alexa, brighten/increase the bedroom light;  
Alexa, dim/decrease the bedroom light.

You can create a group for some of the devices in Alexa app, and control all of them by one order. In smart home page, click "+" and set a group name such as my smart lights, and tick the devices which you want to add into the group, then click Save.

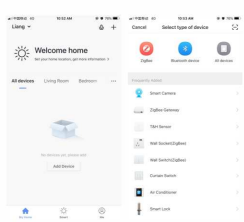


Once the group is created successfully, you can control all devices in the group by voice control, for example, "Alexa, turn on my smart lights". Besides smart lights, we can also control light strips, sockets, switches, heaters, and so on.

7

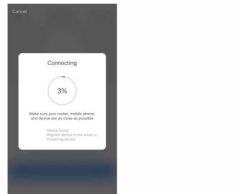
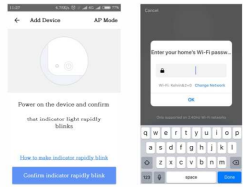


Make sure your mobile phone is connected to Wi-Fi at home. Click "Add Device" in the homepage and choose "All devices", and select "Electrical outlet".

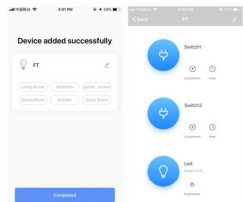


2

**Step 2:** Make the smart device connected to the power supply, press the power button on the right side, then press the function button on the left side for 5 seconds until the warm white indicator blinks rapidly.  
**Step 3:** Enter your Wi-Fi password in your mobile phone and click "Confirm" to enter the page for searching the device.



**Step 4:** Enter the page and complete the configuration



3

Once the group is created successfully, you can control all devices in the group by voice control, for example, "Alexa, turn on my smart lights". Besides smart lights, we can also control light strips, sockets, switches, heaters, and so on.

#### Use Google Home to control your smart device

**1. Prerequisites**  
Before you use Google Home to control smart devices, please make sure below prerequisites are satisfied:  
A Wi-Fi network that you can surf Google normally (for China mainland users);  
A Google Home device;  
The latest version of Google Home app;  
The latest version of Google app;  
Google account.

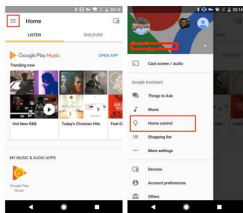
**2. Set up Google Home and start Smart Life in Home Control**  
The setup of Google Home has to be operated on the mobile phone, there will be a little bit difference between Android and IOS, and this guideline takes Android as an example.

Before setup of Google Home, please make sure to change the mobile phone language to English US, otherwise the setup will be failed.  
**2.1 Set up Google Home by Android system**  
If you have already set up Google Home, you can skip this procedure.  
**2.1.1.** Please make sure your Google Home is power on.  
**2.1.2.** Please make your mobile phone connect to the Wi-Fi network that can surf Google normally, and this network is the one Google Home is going to connect.  
**2.1.3.** Open the Google Home app on your mobile phone.  
**2.1.4.** Choose **Accept** at the bottom right corner to agree the Google service terms and privacy policies.  
**2.1.5.** Choose **Allow** to agree the app use the location, thus, the app can discover and set up the nearby Google devices.  
**2.1.6.** Click **SIGN IN** in the new page, and choose the Google account which you have logged in in the mobile phone.  
**2.1.7.** After login, Google Home app will scan the nearby Google Home devices which are power on and standby for setup. If the app can't find Google Home, please make the Google Home power on and put the mobile phone close to Google Home, and try again.  
**2.1.8.** Find the device and click **CONTINUE** to go on.  
**2.1.9.** At this time, the mobile phone will try to connect Google Home. If it fails, please put the mobile phone more close to Google Home and try again.  
**2.1.10.** When the mobile phone successfully connects to Google Home, click **PLAY TEST SOUND**, then Google Home has a tone to inform you that it connects to the correct device. When you hear the tone, click **I HEARD IT** to next procedure.

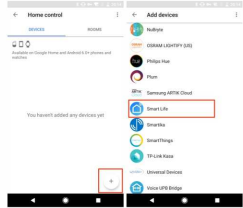
**2.1.11.** Choose the room that your Google Home in, in order to identify it from other Google devices. Then click **CONTINUE**.  
**2.1.12.** Choose the Wi-Fi that you want to connect your Google Home (usually it is the Wi-Fi of your mobile phone connects), click **OK** to allow Google Home obtain the Wi-Fi password automatically. Then, click **CONTINUE**. Or you can enter the Wi-Fi password by yourself.  
**2.1.13.** Google Home will try to connect Wi-Fi network after connection, click **CONTINUE**.

**2.1.14.** In order to let Google Assistant reply to your requirement, you need to log in your Google account again. Click **SIGN IN** and choose the account that you want to use, click **CONTINUE AS XXX**.

**2.2 Set up the smart life binding account to Google Home**  
**2.2.1.** Click **Menu** at the top left corner in the Google Home app, choose **Home Control**.



**2.2.2.** Click "+" at the bottom right corner to add devices, and find **Smart Life** in the list.



**2.2.3** In the login page, choose the country that your Smart Life app account belongs to, and enter the account and password, then click **Link Now**. When the binding process is finished, choose the room where your device is, then your device will be in the devices list of Home Control.

9

#### Use Amazon Echo to control your Smart device

**1. Prerequisites**  
Before you use Echo to control your smart device, please make sure below prerequisites are satisfied:  
A good Wi-Fi network that your device can surf Amazon smoothly;  
An Echo device includes Echo, Echo Tap or Echo Dot; An Amazon account;  
The smart life app and the corresponding account.

**2. Set up Amazon Echo and start smart life skill**  
Users can set up Amazon Echo through website or Amazon Alexa app.

The website to set up Amazon Echo:  
<http://alexa.amazon.com/ps/index.html>;  
Search "Amazon Alexa" in application market to download and install the app.  
This user manual introduces the setup process of Amazon Alexa app, and the setup process through website is basically same to that of Amazon Alexa app.

**2.1 Set up Amazon Echo through Amazon Alexa app**  
**2.1.1.** Please make sure your Echo device is power on.

**2.1.2.** Please make sure Echo is within a good Wi-Fi network to surf Amazon stably.

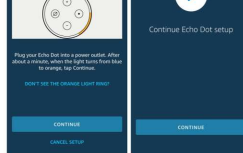
**2.1.3.** Open the Alexa app.

**2.1.4.** Enter Amazon account and password, and click **Sign In** to login.

**2.1.5.** Successfully login and click menu at the top left corner of home page, choose **Settings**, then click **Set up a new device** to set up Echo device.

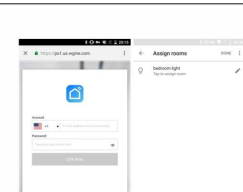
**2.1.6.** Choose your Echo device, and set up the language as English (United States), and then click **Connect to Wi-Fi**.

**2.1.7.** When below pages comes out, keep pressing the small round dot until the Echo light turns into yellow. Then click **Continue** and choose **Allow** in the page of authorization request, then the mobile phone will connect to Echo automatically. Then, click **Continue**.



**2.1.8.** Choose your Echo device, and set up the language as English (United States), and then click **Connect to Wi-Fi**.

**2.1.9.** When below pages comes out, keep pressing the small round dot until the Echo light turns into yellow. Then click **Continue** and choose **Allow** in the page of authorization request, then the mobile phone will connect to Echo automatically. Then, click **Continue**.

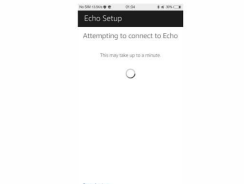


**2.2.4.** Control your smart device with Google Home  
Now, you can control your smart device with Google Home. Take the bedroom light as an example, the available orders includes:  
OK Google, turn on/off the bedroom lights.  
OK Google, set the bedroom light to 50 percent.  
OK Google, set the bedroom light to red.

Remark:  
This device complies with Part 15 of the FCC Rules. Operation is subject to the following two conditions: (1) this device may not cause harmful interference, and (2) this device must accept any interference received, including interference that may cause undesired operation.

**Warning:**  
Changes or modifications to this unit not expressly approved by the party responsible for compliance could void the user's authority to operate the equipment.  
**NOTE:**  
This equipment has been tested and found to comply with the limits for a Class B digital device, pursuant to Part 15 of the FCC Rules. These limits are designed to provide reasonable protection against harmful interference in a residential installation. This equipment generates, uses and can radiate radio frequency energy and, if not installed and used in accordance with the instructions, may cause harmful interference to radio communications.

10



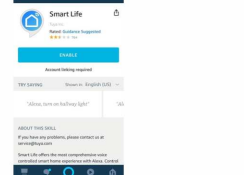
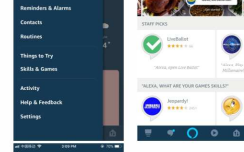
**2.1.8.** Choose a Wi-Fi network to connect Echo. Enter the Wi-Fi password, click **Connect**. It will take a few minutes to try to connect the network.

**2.1.9.** After connecting successfully, click **Continue**. Then there is an introduction video, click **Continue** at the end of the video to Alexa home page. Now, Echo setup is finished.

**2.2 Set up the "Smart Life" binding account to Echo**  
**2.2.1.** Choose **Skills** from menu, and search "Smart Life". Choose "Smart Life" from the results, and click **Enable** to start Skill.

You can also discover the device by clicking **Discover Devices** in the smart home page of Alexa app. The discovered devices will be shown in the list.

You can also discover the device by clicking "+" in the smart home page of Alexa app. Then click **Add Device** and go to the page which you choose **Switch** and find **Other**, then click **DISCOVER DEVICES**, the discovered devices will be shown in the list.



However, there is no guarantee that interference will not occur in a particular installation. If this equipment does cause harmful interference to radio or television reception, which can be determined by turning the equipment off and on, the user is encouraged to try to correct the interference by one or more of the following measures:  
-Reorient or relocate the receiving antenna.  
-Increase the separation between the equipment and receiver.  
-Connect the equipment into an outlet on a circuit different from that to which the receiver is connected.  
-Consult the dealer or an experienced radio/TV technician for help.

\*FCC RF Radiation Exposure Statement  
Caution: To maintain compliance with the FCC's RF exposure guidelines, please the unit at least 20cm from nearby persons.\*

11

**2.2.2.** Please enter your smart life app account and password in the new page, and choose your country, then click **Link Now** to let your account be bound to Echo. When there is "Alexa" has been successfully linked with "Smart Life", that means your account is successfully bound to Echo, then you can click x at the top left corner to go back to Alexa app.



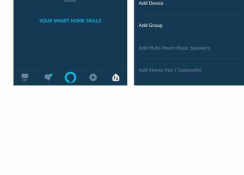
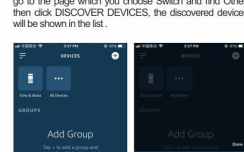
**3. Control your smart device by Echo**  
**3.1 Discover your device**  
Before controlling your device, Echo needs to discover it. You can tell Echo "Alexa, discover devices". Echo will scan the device which was set up through smart life app, such as the lamp bulb. After 20 seconds, Echo will reply the scan result.

You can also discover the device by clicking **Discover Devices** in the smart home page of Alexa app. The discovered devices will be shown in the list.

You can also discover the device by clicking "+" in the smart home page of Alexa app. Then click **Add Device** and go to the page which you choose **Switch** and find **Other**, then click **DISCOVER DEVICES**, the discovered devices will be shown in the list.

You can also discover the device by clicking **Discover Devices** in the smart home page of Alexa app. The discovered devices will be shown in the list.

You can also discover the device by clicking "+" in the smart home page of Alexa app. Then click **Add Device** and go to the page which you choose **Switch** and find **Other**, then click **DISCOVER DEVICES**, the discovered devices will be shown in the list.



However, there is no guarantee that interference will not occur in a particular installation. If this equipment does cause harmful interference to radio or television reception, which can be determined by turning the equipment off and on, the user is encouraged to try to correct the interference by one or more of the following measures:  
-Reorient or relocate the receiving antenna.  
-Increase the separation between the equipment and receiver.  
-Connect the equipment into an outlet on a circuit different from that to which the receiver is connected.  
-Consult the dealer or an experienced radio/TV technician for help.

\*FCC RF Radiation Exposure Statement  
Caution: To maintain compliance with the FCC's RF exposure guidelines, please the unit at least 20cm from nearby persons.\*

12