

INTRODUCTION

Action Camera is a high-definition digital motion video recording device, created to reach market demand. It has a wide variety of the leading features for digital video recording, photo shooting, audio recording with screen display and detachable battery. Best suitable for vehicle recording, outdoor sports, home security, diving and more related activities. Allowing you to enjoy the moments while capturing every scene anytime, anywhere.

PRODUCT OVERVIEW



1 - Lens

2 - 2.0 inch Touch Screen

3 - 1.4 inch Front Screen

4 - Shutter / Select Button

5 - Charging Indicator

6 - Operation indicator

7 - Power / Mode Button

8 - Up / Wi-Fi Button

9 - Down / Screen's Switch Button

10 - External Mic/Data/Charging Port

11 - Battery Door

12 - Speaker

13 - 1/4 Screw Port

Tips :

* Verify the camera is in **Video / Photo** Preview interface, Press the **UP Button** to turn on/off Wi-Fi.

* Verify the camera is in **Video / Photo** Preview interface, Press the **Down Button** to switch the front or rear screen.

* The 1.4-inch front screen has no operation function and is only used for preview.

GETTING STARTED

HELLO

Welcome to your new camera. To capture video and photos, you need a micro SD card (sold separately).

MICRO SD CARDS

Use brand name memory cards that meet these requirements:

- micro SD, micro SDHC, or micro SDXC
- Class 10 or UHS-I rating
- Capacity up to 64GB (FAT32)

Note:

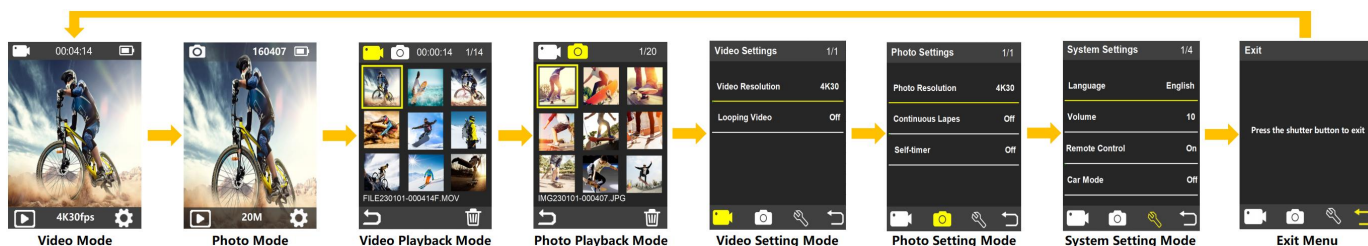
1. Please format the micro SD card first in this camera before using. To keep your micro SD card in good condition, reformat it on a regular basis. Reformatting erases all of your content, so be sure to offload your photos and videos first.
2. FAT32 format Micro SD card stops recording when the storage of each file is over 4 GB and starts to record again on a new file.

To Power ON: Press and hold the **Power/Mode Button** for seconds to the screen on.

To Power OFF: Press and hold the **Power/Mode Button** for seconds to the screen off.

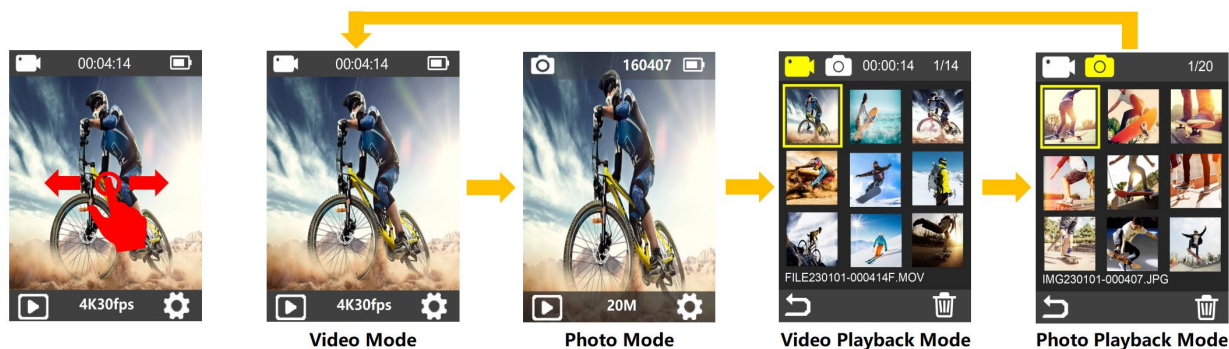
OVERVIEW OF MODES

Turn camera ON and repeatedly press the **Mode Button** to cycle through camera modes and settings. The modes will appear in following order:

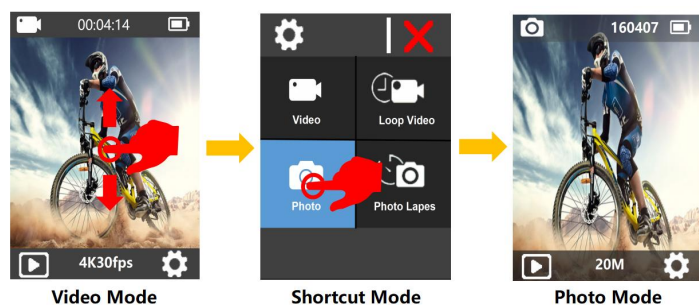


Or

In any mode, slide from right to left or slide from left to right on the display to switch modes, the modes will cycle in following order:



In video mode or photo mode, quickly slide vertically up or down on the screen to enter shortcut mode. Tap the target mode to quickly enter.



● VIDEO MODE

Video Mode is the default mode when you turn on the camera. In Video Mode, press Shutter button, the camera starts recording video. Press Shutter button to stop recording video.

● PHOTO MODE

Press Mode button once to switch to Photo Mode after you turn on camera. In Photo Mode, press Shutter button, the camera takes a photo.

● VIDEO PLAYBACK MODE

Press Mode button several times to switch to Video Playback Mode. In Video Playback Mode, press the Up / Down button to scroll through the video files. Press Shutter button to playback video in full-screen view. Press and hold the Up button for 3 seconds to delete the video.

● PHOTO PLAYBACK MODE

Press Mode button several times to switch to Photo Playback Mode. In Photo Playback Mode, press the Up / Down button to scroll through the Photo files. Press Shutter button to playback photo in full-screen view. Press and hold the Up button for 3 seconds to delete the photo.

● VIDEO SETTING MODE

Press Mode button several times to switch to Video Setting Mode. In Video Setting Mode, press the Up / Down button to scroll through the different options. Press Shutter button to select desired option.

● PHOTO SETTING MODE

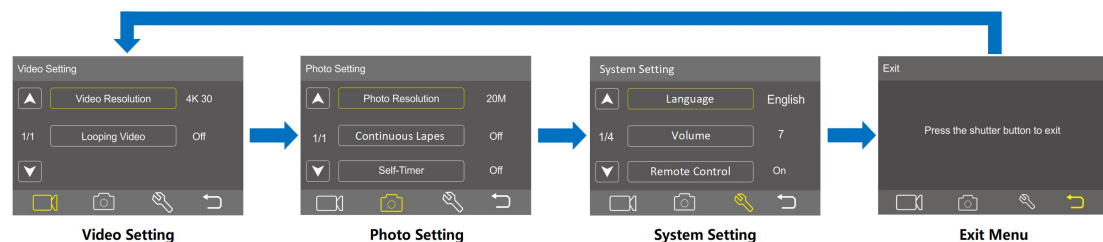
Press Mode button several times to switch to Photo Setting Mode. In Photo Setting Mode, press the Up / Down button to scroll through the different options. Press Shutter button to select desired option.

● SYSTEM SETTING MODE

Press Mode button several times to switch to System Setting Mode. In System Setting Mode, press the Up / Down button to scroll through the different options. Press Shutter button to select desired option.

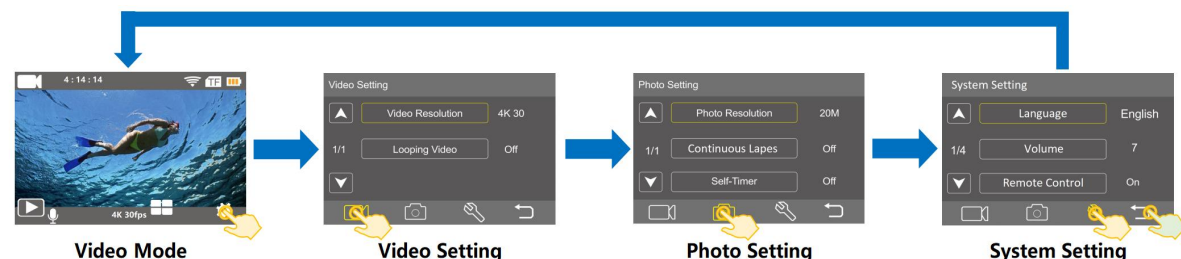
CUSTOMIZING YOUR CAMERA

Repeatedly press the **Mode Button** to different Setting Menu, use the **UP / Down Button** to cycle through the various options, and press the **Shutter/Select Button** to select desired option. In the Exit Menu, press the the **Shutter/Select Button** to exit.



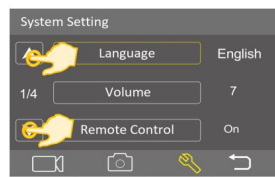
or

Verify the camera is in desired **Video / Photo Mode**, touch the **Setting ICON** on the bottom right corner of screen to enter to the setting menu, and tap the different Setting ICON on the bottom of screen to switch to different settings ,

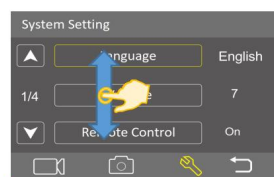


In the desired settings, how to turn page:

Tap the **UP** or **DWON icon** on the left side of the screen, or swipe your finger up or down on the screen to flip the page



Tap Up/Down icon



Slide Up/Down

In the desired settings, how to select desired option:

First tap the desired option, the option selected will be highlighted in the yellow frame, tap the option selected again and you will enter into the sub-menu of the option, then tap twice quickly the desired option in the sub-menu to select your desired option.

VIDEO SETTING

Video Resolution: 4K 30 / 2.7K 30 / 1080P 60 / 1080P60(9:16) / 1080P 30 / 1080P30(9:16)

Default setting is 4K 30fps.

Looping Video: Off / 1Min./ 3Min./ 5Min.

Default setting is Off.

The files will be saved every 3 Min if you choose the 3 Min option. When the memory card is full, the new files will cover the old one if loop recording is on. If it is off, the camera will not record anymore when the card is full. You will then need to format the memory card or change to a new memory card.

Pre-record: On/Off

Default setting is Off.

If you turn on Pre-record, you can record videos a few seconds before pressing the shutter button, so you won't miss out on exciting moments.

Note:

1. This camera equip EIS (Electronics Image Stabilizer) function with 3-axis gyroscope to detect motion changes. EIS only support 2.7K 30fps/1080P 60/30fps and is enabled by default.
2. This camera can not playback 1080P60(9:16)/1080P30(9:16) video File, which requires playback on computer or phone.
3. When capturing video at high resolutions or high frame rates in warm ambient temperatures, the camera may become warm and use more power.

PHOTO SETTING

Photo Resolution: 20M / 16M / 14M / 12M

Default setting is 4K 30fps.

Continuous Lapse : Off / 3 s/ 5 s/ 10 s / 30 s / 60 s

Default setting is Off.

Continuous Lapse captures a series of photos at specified intervals. Use this mode to capture photos of any activity, then choose the best ones later.

Self-timer: Off / 5 s / 10 s / 20 s

Default setting is Off.

The self-timer provides a delay between pressing the shutter release and the picture being taken.

SYSTEM SETTING:

Language: English / Español / Deutsch / Italiano / Français / 简体中文 / 日本語

Default setting is English.

Sets the language that appears on the camera.

Volume: 0~10

Default setting is 5.

Sets the volume of your camera's record sound.

Remote Control: On/Off

Default setting is On.

Turn on the remote function, the camera will record video or take photo by the remote included.

Car Mode: On/Off

Default setting is Off.

If you turn on Car Mode and connect the camera with a car cigarette lighter, the camera will turn on automatically if you start your car. It will turn off if you stop your car.

Note:

- 1). Must use 5V 1A~2A output car charger or external power supply.
- 2). Using a dash cam, we suggest to turn on the Loop Recording, Car Mode, and Screen Saver at same time.

Exposure: +2~-2

Default setting is 0.

By default, your camera uses the entire image to determine the appropriate exposure level. However, Exposure lets you select an area that you want the camera to prioritize when determining exposure. This setting is particularly useful in shots where an important region might otherwise be over- or underexposed. When you change this setting, the LCD display immediately shows you the effect on your image. If you change modes, the camera returns to using the entire scene to determine the correct level of exposure.

Diving Mode: On/Off

Default setting is Off.

Provides color correction while capturing footage in blue water or clear freshwater at depths of 5 to 33ft (1.5 to 10m).

Date & Time: __Y__M__D 00:00:00

The date and time are automatically updated when you connect your camera to the Live DV app. However, you can manually change these settings, if needed.

Note:

If the battery is removed from the camera for an extended period of time, the date and time will be reset automatically.

Stamp: On/Off

If you turn on Date Stamp, this camera adds date stamp to the videos or photos you take.

If you select None, this camera will not add date stamp to the videos or photos you take.

Upside Down: On/Off

This setting determines the orientation of setting menu.

Screen Saver: Off/30 sec./1 Min./3 Min.

Turns off the LCD display after a period of inactivity to save battery life. To turn on the LCD display again, press any button on the camera.

Power Off: Off/1Min./5Min.

Powers off your camera after a period of inactivity to save battery life.

Format: YES/NO

To keep your micro SD card in good condition, reformat it on a regular basis. Reformatting erases all of your content, so be sure to offload your photos and videos first. To reformat your card, press the mode button to enter system setting, then press down button several times to enter Format > Format Card? > YES.

Reset: YES/NO

This option resets all settings to their default values.

FW Version: Brand / Model / Version / Updated

You can check the brand, model, version and updated time of your camera.

NOTE:

FW version is the main information of firmware upgrade, troubleshooting and after-sales. If necessary, please provide the software version information to our after-sales team so that we can serve you in time.

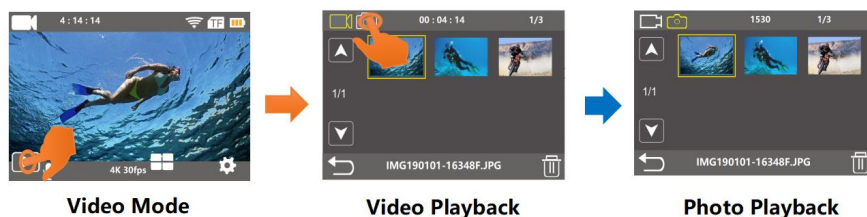
PLAYBACK

Playing back on camera

1. Enter Video or Photo playback mode. If your SD card contains a lot of content, it might take a minute for it to load.
2. Press the **Up / Down Button** to scroll through the video or photo files.
3. Press **Shutter Button** to open video or photo in full-screen view.
4. To return to the thumbnails screen, press **Mode Button**.
5. To exit the gallery, press **Mode Button**.

or

In video mode or photo mode, tap the playback icon in the lower left corner of the screen to quickly enter the video playback menu, then tap the photo icon in the upper left corner to enter the photo playback menu, tap the desired file to playback.



Note: This camera can not playback 1080P60(9:16)/1080P30(9:16) video File, which requires playback on computer.

Playing back on TV

1. Turn on the TV
2. Connect the Mini HDMI end to the port on camera and HDMI end to HDMI port on the TV
3. Select the right input source on the TV
4. Turn on the camera after a while, you can preview the camera from TV
5. Setting your camera into the video/photo playback mode
6. Select the desired options to playback

Notes:

1. If the camera is connected TV with HDMI cable, the camera do not support to take videos or photo, only for Playback or Preview.
2. HDMI cable is not included in the standard package,you will need buy an extra HDMI cable.

Playing back on Computer

To play back your video and photos on a computer, you must first transfer these files to a computer. Transferring also frees up space on your micro SD card for new content. To offload files to a computer using a card reader (sold separately) and your computer's file explorer, connect the card reader to the computer, then insert the micro SD card. You can then transfer files to your computer or delete selected files on your card. Note that you must use a card reader to offload photos or audio files. With this method, playback resolution depends on the resolution of the device and its ability to play back that resolution.

Notes:

1. This camera might not be compatible with the files from different solution camera or other device.
2. The quick time player is a good compatibility with MOV format video files. We strongly recommend using the quick time player playback to play back video files on your computer.

Delete single file on camera

1. Verify the camera is in Video or Photo Playback menu, If your micro SD card contains a lot of content, it might take a minute for it to load.
2. Press the **Up or Down Button** to locate the file you want to delete.
3. Press and hold the **Up Button** for seconds. The screen shows 'Delete Selected File? YES / NO' .
4. Press **Shutter Button**, the selected file will be deleted.

BATTERY

The camera contains sensitive components, including the battery.

■ BATTERY STORAGE AND HANDLING

- Do not store in temperature above 140°F/60°C.
- Avoid exposing your camera to very cold or very hot temperatures. Low or high temperature conditions may temporarily shorten the battery life or cause the camera to temporarily stop working properly. Avoid dramatic changes in temperature or humidity when using the camera, as condensation may form on or within the camera.
- Do not dry the camera or battery with an external heat source such as a microwave oven or hair dryer.
- Damage to the camera or battery caused by contact with liquid inside the camera is not covered under the warranty.
- Do not store your battery with metal objects, such as coins, keys or necklaces. If the battery terminals come in contact with metal objects, this may cause a fire.
- Do not make any unauthorized alterations to the camera. Doing so may compromise safety, regulatory compliance, performance, and may void the warranty.
- Please do not throw the camera or its battery to the garbage, find a specific recycling point for it.

WARNING:

- Do not drop, disassemble, open, crush, bend, deform, puncture, shred, microwave, incinerate or paint the camera or battery.
- Do not insert foreign objects into the battery opening on the camera.
- Do not use the camera or the battery if it has been damaged - for example, if cracked, punctured or harmed by water. Disassembling or puncturing the battery can cause an explosion or fire.

■ CHARGING THE BATTERY

1. Connect the camera to USB power supply (5V/1A-2A).
2. The charging status light remains ON while the battery is charging.
3. The charging status light will turn OFF when the battery is fully charged.

Notes:

- Charging time: 4-hours for 5V 1A power supply
- Please make sure the camera is shuttled down while charging.
- Remove the battery before using as a dash camera and use 5V/1A brand-name car charger.

■ MAXIMIZING BATTERY LIFE

If the battery reaches 0% while recording, the camera saves the file and powers off.

To maximize battery life, follow these guidelines when possible:

- Turn off Wireless Connections
- Capture video at lower frame rates and resolutions
- Use Screen Saver setting.

Wi-Fi APP

The Wi-Fi App lets you control your camera remotely using a smart phone. Features include full camera control, live preview, playback and sharing of selected content and more.

Download and Install FUN DV app

Option 1:

Download the **FUN DV** App or to your phone from the Google Play or Apple App Store,

Option 2:

Scan the QR code below to download the **FUN DV** App or to your phone.



Android 7.0
or later



iOS 10.0
or later



Notes:

Google, Android, Google play, App Store and other marks are the trademarks of Google LLC.

Connect to the Wi-Fi App

1. Press the **Power/Mode Button** to power the camera ON.
2. Verify the camera in video mode: Press the **Up/Wi-Fi Button** for seconds to turn on Wi-Fi, then the Wi-Fi icon and Wi-Fi SSID & password will show on the screen.

3. Connect to the network called **"FUN DV"** in your phone ' s Wi-Fi setting.
4. Enter the password" 12345678"
5. Launch the **FUN DV** App on your smart phone.
6. Press the **Up/Wi-Fi Button** for seconds again to turn off Wi-Fi.

REMOTE CONTROLLER

Place the Remote Control On Your Wrist and Acquiesce Ultra-convenient Control For Hiking,Biking, Skiing,Bungee and more while installing the camera on your Helmet or other place.

Remote: Splash-proof only / Range: 5M

How to turn on/turn off the remote function:

Select **ON/OFF** in the Setting Menu to turn on/off the remote controller.

Verify the camera is in Video/Photo preview mode first, if the camera is set in Playback or Setting Menu, the camera can not receive the remote signal and can not be controlled by the remote.

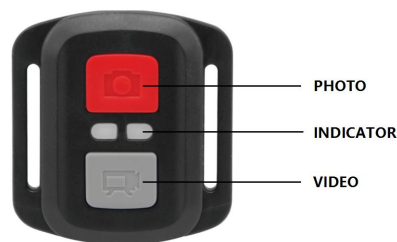
VIDEO

To start recording:

Press the Grey Video Button.

To stop recording:

Press the Grey Video Button again.



PHOTO

To take a photo:

Press the Red Photo Button. The camera will emit a camera shutter sound.

WATERPROOF CASE

Specially designed for diving, surfing, snorkeling and other water sports activities. The waterproof case does not only offer greater waterproof protection to your camera, it also offers extra protection against dust, scratches and shocks. Light and easy to carry, excellent PMMA material endows it with high quality. With the use of the waterproof case, you can record activities even 30M under water and it won't damage the shooting effect, clear and vivid. Your movement and photographic effect won' t be affected by anti-surf pressure. Convenient to link camera with other accessories mount through this waterproof case.

How to open the waterproof case:

- 1) Pick the black latch up on the top of the case.
- 2) Pull up the buckle of the case.
- 3) Open the back cover of the case.

How to close the waterproof case:

- 1) Please close the back door of the case.
- 2) Pull down the latch and lock it to the back door.
- 3) Press down the buckle.

Tips:

1. Please tear the protective films on the waterproof case lens before shoot/record;
2. To achieve better waterproof performance, the voice record within the waterproof case will be weakened.

NOTES:

- In order to capture a clear video or photo, please tear off the lens protection film of the waterproof shell before use, and protect well the lens window from scratch after use.
- Before sealing the waterproof case, keep the camera housing's White Silicone Seal Ring clean, a single hair or grain of sand cause a leak. You can test by closing the case without inserting the camera. Submerge the case completely in the water for about a minute. Remove the case from the water, dry off its exterior with a towel, and then open the case. If the interior is dry, the case is safe for use under water.
- Before sealing the waterproof case, make sure the waterproof case is sealed well before use. If the white silicone sealing ring is found to be hardened, deformed or damaged, please stop using this water tank and replace the new waterproof shell in time.
- Please dry it in time after use, otherwise the waterproof shell metal button will rust and reduce the waterproof performance. After use in seawater or seaside, you will need to rinse the outside of the housing with fresh water and then dry. This will prevent corrosion of the hinge pin and salt buildup in the seal, which can cause failure. Do not flush the interior with water.
- When use the camera with the waterproof in low temperature, such as Winter, Rainy Day, Underwater and so on, please do the anti fogging treatment so as to avoid the blurred video. It is recommended to add anti-fog film; insert the anti-fog film into the waterproof case to prevent the lens from fogging in low temperature or humid environment;
- Keep it safe from falling and dropping and high temperature above 80°C.
- Waterproof shell is vulnerable product, we strongly recommend, according to the usage of the environment and frequency, to replace the waterproof shell in time.

SAFETY WARNINGS

- This is a 4K action camera, It is normal for the housing to exert heat under use. Don't expose the product directly to high temperatures over 50°C.
- It requires a name brand Class 10 or higher micro SD card, Format your SD card on the camera first before using.
- Keep it safe from falling and dropping.
- Do not place heavy objects on the camera.
- Keep it distance from any strong magnetic interference objects like electrical machine to avoid strong radio waves that might be damaging the product and affect the sound or image quality.
- Keep the camera away from water and liquids (unless equipped with waterproof case). This may cause the camera to malfunction.
- Don't place your Micro SD card near strong magnetic objects to avoid data error or loss.
- Must remove the battery before using as a dash camera and use brand-name 5V/1A car charger.
- In case of overheating, unwanted smoke or unpleasant smell from the device, unplug it immediately from the power outlet to prevent hazardous fire.
- Keep it safety from children while on charging.
- Do not use the camera when it is low power.
- Do not use or turn off the camera while it is in charging.
- Store the device in a cool, dry and dust free location.
- Do not attempt to open the case of the camera or modify it in any way, if the camera has been detached, the warranty will be void.

FCC Warning Statement

Changes or modifications not expressly approved by the party responsible for compliance could void the user's authority to operate the equipment. This equipment has been tested and found to comply with the limits for a Class B digital device, pursuant to Part 15 of the FCC Rules. These limits are designed to provide reasonable protection against harmful interference in a residential installation. This equipment generates uses and can radiate radio frequency energy and, if not installed and used in accordance with the instructions, may cause harmful interference to radio communications. However, there is no guarantee that interference will not occur in a particular installation. If this equipment does cause harmful interference to radio or television reception, which can be determined by turning the equipment off and on, the user is encouraged to try to correct the interference by one or more of the following measures:

- Reorient or relocate the receiving antenna.
- Increase the separation between the equipment and receiver.
- Connect the equipment into an outlet on a circuit different from that to which the receiver is connected.
- Consult the dealer or an experienced radio/TV technician for help.

FCC Radiation Exposure Statement

The device has been evaluated to meet general RF exposure requirement. The device can be used in portable exposure condition without restriction.

This device complies with Part 15 of the FCC Rules. Operation is subject to the following two conditions:

- (1) This device may not cause harmful interference, and
- (2) This device must accept any interference received, including interference that may cause undesired operation.

Specification could be subject to modification due to updating without notice, please regard the actual product as the standard form. If need the newest updated software, please contact our after sale service team!

CONTACT US

For any inquiries, issues or comments concerning our products, please send E-mail to the address below or call us. We will respond as soon as possible.

E-mail: cs@onlincam.com

Web: www.onlincam.com