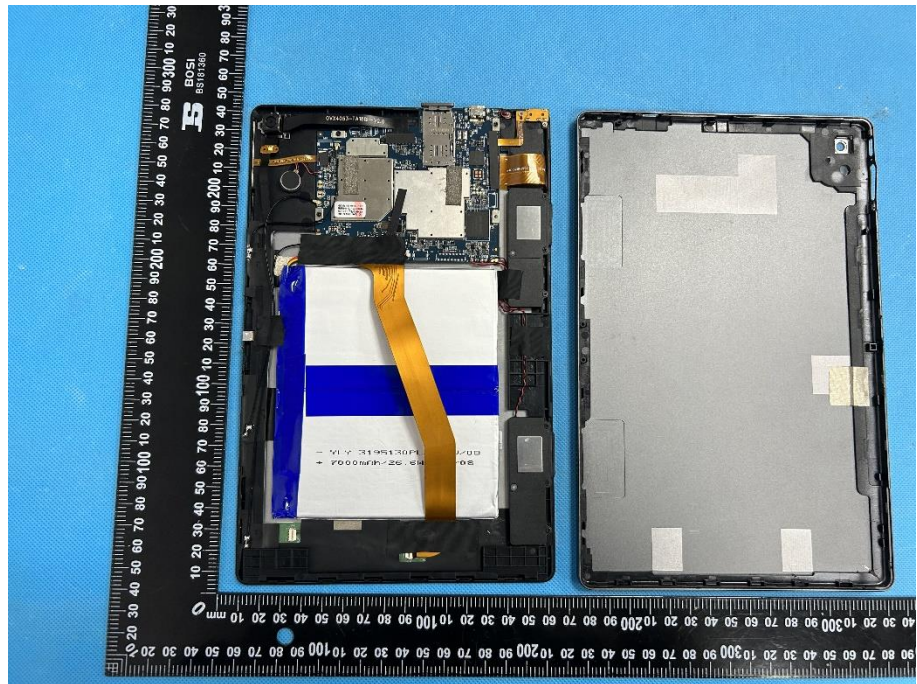
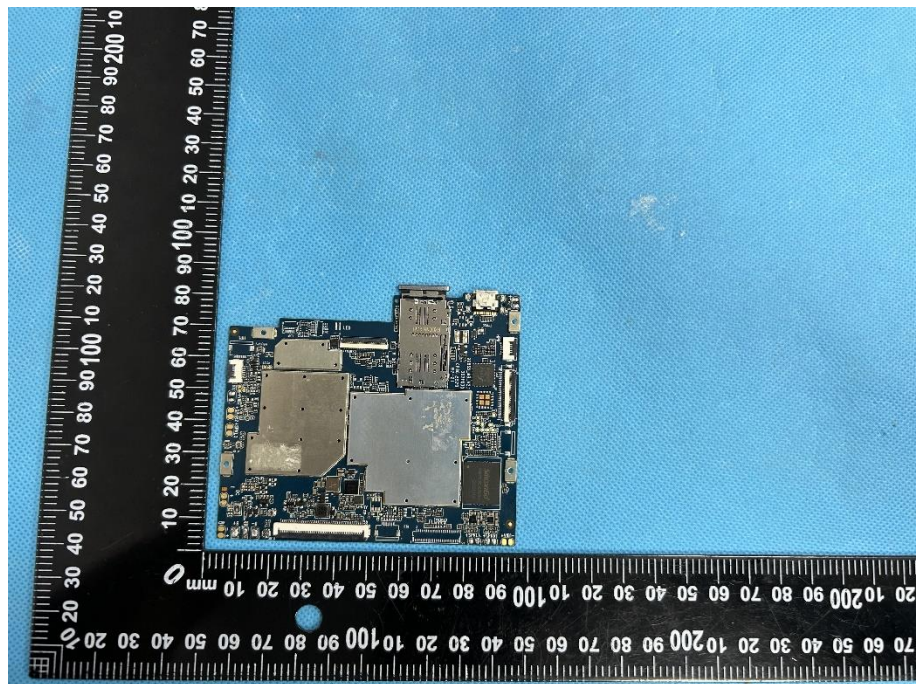


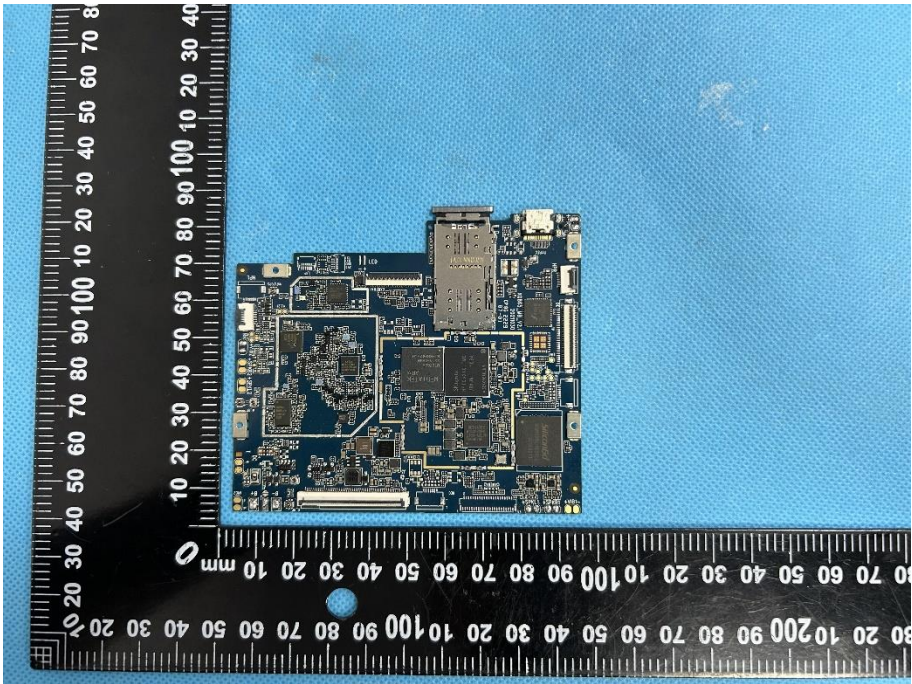
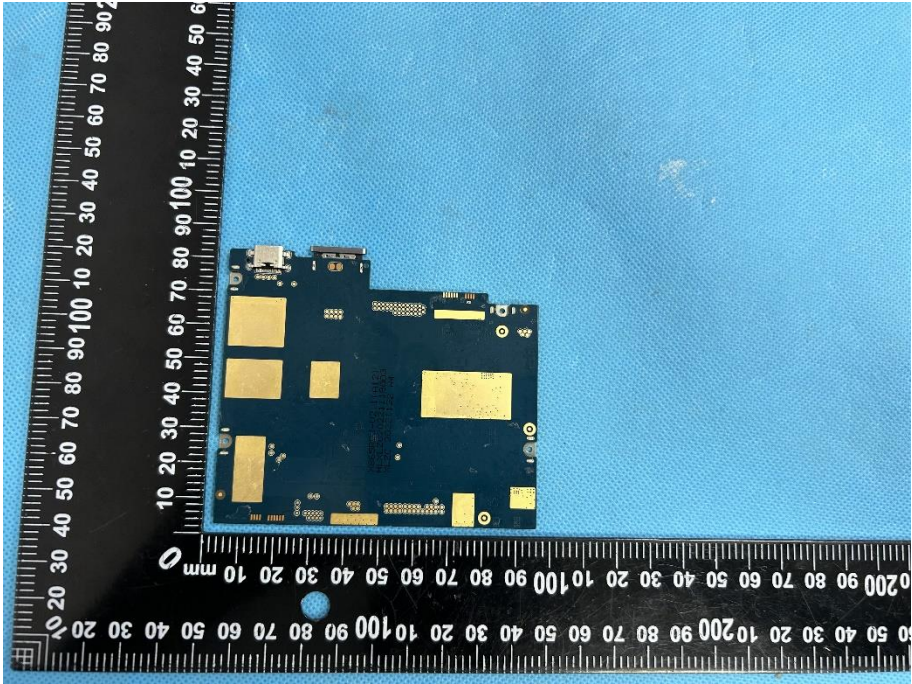
EXHIBIT 3 - EUT INTERNAL PHOTOGRAPHS

**EUT Housing and
Board View 1**

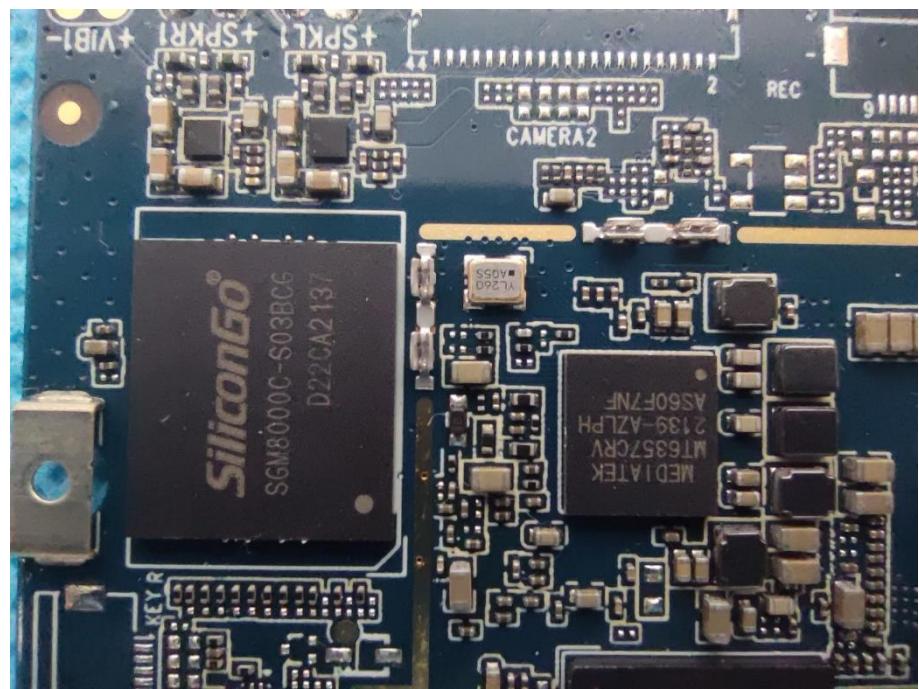


**Solder
Board-Component
View 1**

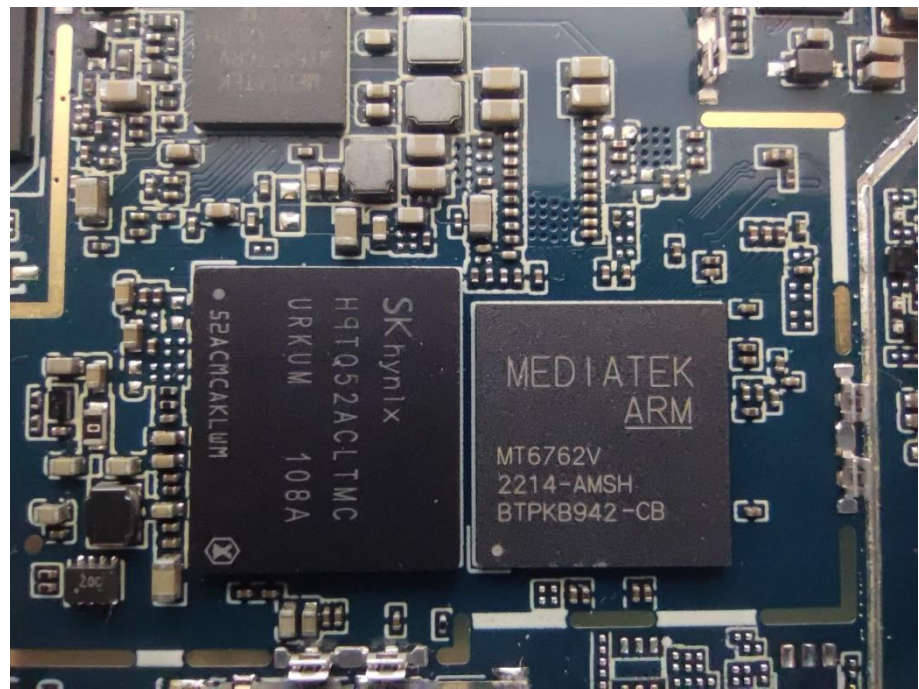


<p>Solder Board-Component View 2</p>	 A photograph of a blue printed circuit board (PCB) component, likely a solder mask or a specific board component, placed on a blue textured surface. The component is rectangular and densely packed with various electronic components, including integrated circuits, capacitors, and connectors. A black ruler with white markings is positioned vertically to the left of the component, showing measurements in millimeters. The ruler markings are visible from 0 to 100 mm.
<p>Solder Board-Component View 3</p>	 A photograph of the same blue PCB component from a different perspective, showing the reverse side. The component is rectangular and features several large, square, gold-colored solder pads or components. A black ruler with white markings is positioned vertically to the left of the component, showing measurements in millimeters. The ruler markings are visible from 0 to 100 mm.

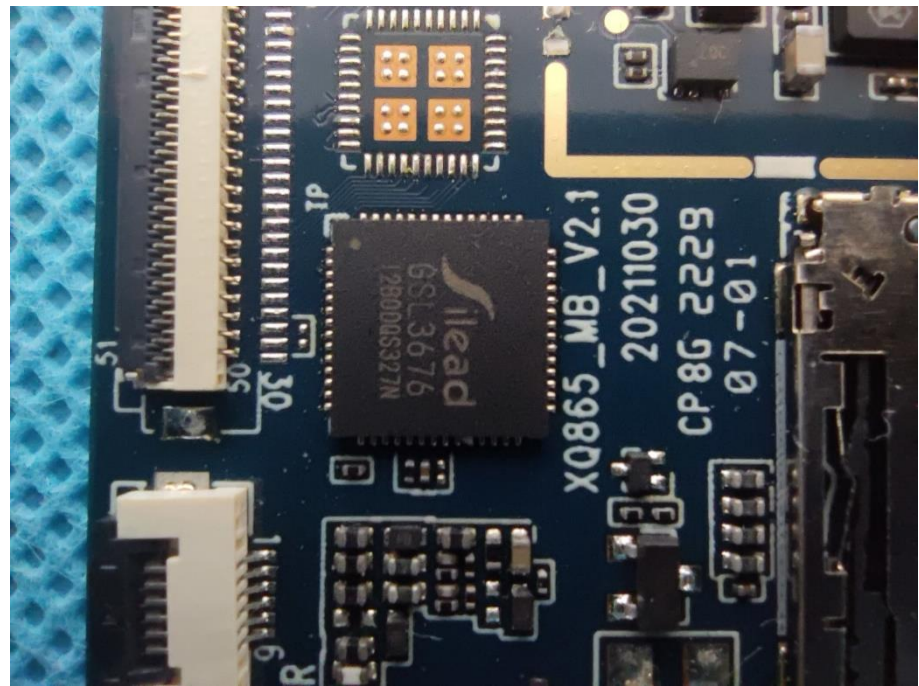
**Solder
Board-Component
View 4**



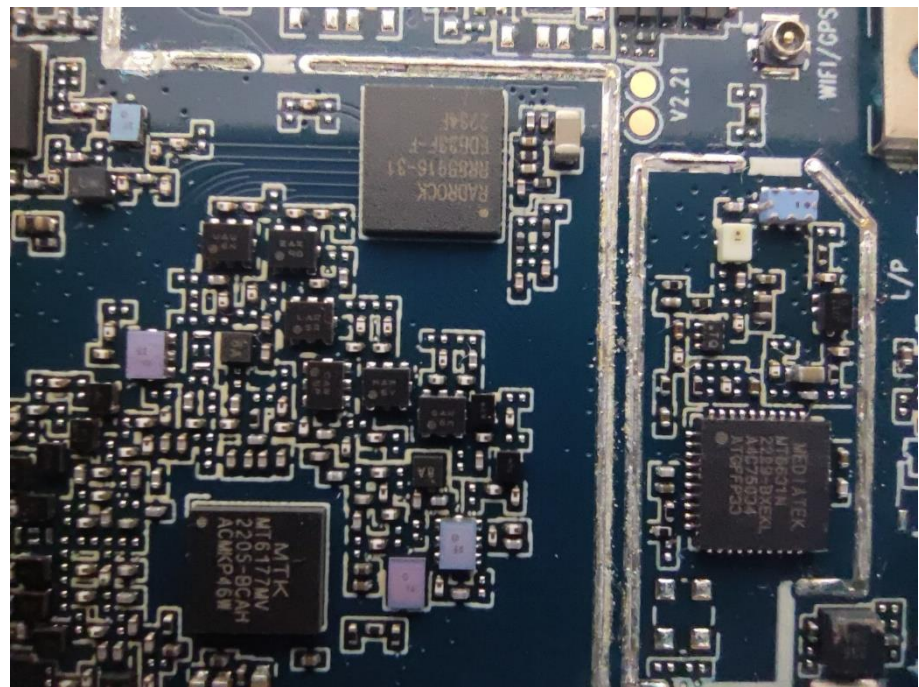
**Solder
Board-Component
View 5**

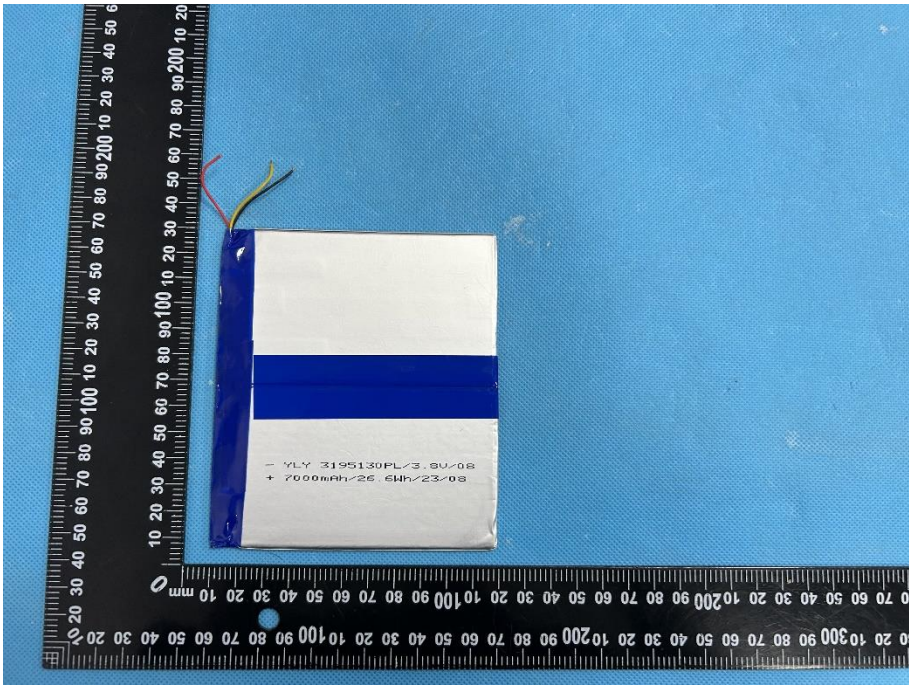
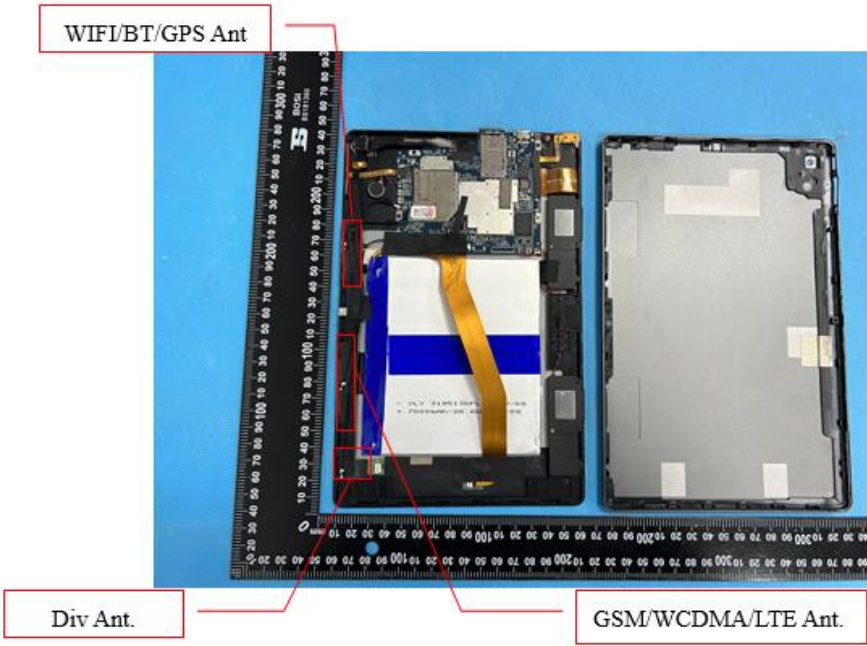


Solder
Board-Component
View 6



Solder
Board-Component
View 7



<p>Solder Board-Component View 8</p>	 <p>A photograph of a rectangular solder board component with a blue and white surface. It is placed on a blue background with a black ruler for scale. The ruler shows dimensions in millimeters. The component has two thin wires extending from the top left corner. Printed text on the component includes: - YLY 3195130PL/3, 8U/08 and + 7000mAh/26.5MP/23/08.</p>
<p>Antenna View</p>	 <p>A photograph showing the internal antenna layout of a device. A ruler is placed vertically on the left for scale. Three red boxes with labels point to specific antenna locations: 'WIFI/BT/GPS Ant' at the top, 'Div Ant.' at the bottom left, and 'GSM/WCDMA/LTE Ant.' at the bottom right. The device's internal components, including a battery and various circuit boards, are visible.</p>