

说明书尺寸:75X90mm

MINISO

USER MANUAL 產品說明書

頭戴式藍牙耳機

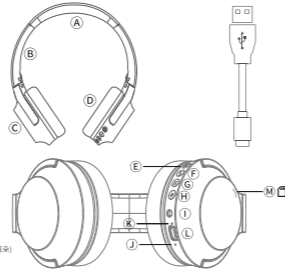
WIRELESS HEADSET CASQUE AUDIO SANS FIL

MODEL: TM-053

請在使用產品前仔細閱讀使用手冊,並妥善保存以供日後參考。
READ THIS MANUAL CAREFULLY PRIOR TO
USING THE PRODUCT AND SAVE IT FOR FUTURE REFERENCE.

產品與配件

- (A) 頭梁條
- (B) 伸縮杆
- (C) 耳殼
- (D) 耳套
- (E) 電源開關/模式
- (F) 音量-/上一曲
- (G) 播放暫停/接聽掛斷
- (H) 音量+/下一曲
- (I) 3.5MM音訊輸入
- (J) MIC
- (K) 指示燈
- (L) MICRO USB
- (M) TF卡插座 (此插槽卡正反面皆可)



產品參數

藍牙版本: V5.0
 藍牙配對名: MINISO-TM-053
 無線距離: 10米
 使用時間: 4 小時
 充電時間: 2小時內
 待機時間: 300 小時
 電池: 200 mAh可充電鋰電池
 FM頻率: 87.5-108MHz
 無線頻率: 2.402-2.480GHz
 輸出功率: 0.2mW
 信噪比: 88Db

喇叭: Ø40mm
 靈敏度: 110±3dB S.P.L at 1KHZ
 阻抗: 32Ω
 頻率響應: 20Hz-20 KHz
 額定功率: 5mW×2
 音樂播放時間: 5h

使用指引

按鍵操作說明:

長按E鍵3秒為開關機
 無線來電狀態,短按G鍵接聽來電、長按G鍵拒聽,連續按兩下G鍵為重拔
 無線播放狀態短按G鍵播放、暫停
 TF卡播放狀態短按G鍵播放、暫停,
 FM狀態短按G鍵自動搜索電臺
 無線狀態時短按H鍵音量加,長按下一曲
 MP3狀態時短按H鍵音量加,長按下一曲
 FM狀態短按H鍵音量加,長按下一個頻點
M:
 短按模式轉換,無線/MP3/M
 無線狀態時短按F鍵音量減,長按上一曲
 MP3狀態時短按F鍵音量減,長按上一曲
 FM狀態短按F鍵音量減,長按上一個頻點

指示燈:

無線狀態:配對狀態紅藍燈快閃,配對成功後藍燈慢閃
 MP3狀態:播放時藍燈快閃
 M狀態:收聽電臺時藍燈長亮,搜索電臺時快閃
 充電狀態:充電時紅燈長亮,充電完成後紅燈滅

無線使用操作說明:

1-長按E鍵3秒開機,開機默認無線狀態
 2-紅藍燈快閃,無線進入配對狀態
 3-用手機搜索本產品無線,無線名稱爲MINISO-TM-053
 4-當手機搜索到MINISO-TM-053設備名稱時點連接,如果提示輸入密碼,密碼爲0000
 5-當無線連接成功後,藍燈慢閃
 6-打開手機音樂播放器就可以播放音樂,本產品可以控制無線上下曲及播放暫停及通話接聽,重拔等功能

MP3使用操作說明:

1-長按E鍵3秒開機
 2-播放TF記憶卡即進入MP3歌曲播放狀態或短按E鍵轉到MP3播放狀態
 3-短按G鍵為MP3播放/暫停
 4-長按+或-為MP3上下曲控制
 5-短按+或-為MP3音量大小控制
 FM使用操作說明:
 1-長按E鍵3秒開機
 2-短按E鍵到FM模式
 3-FM狀態短按G鍵為自動一次性搜索全部能收到的電臺
 4-長按+或-為選擇已經搜索到的電臺
 5-短按+或-為FM音量大小控制
 LINE外接音頻輸入操作說明:
 1-開機狀態,插入音頻線,進入AUX LINE IN模式
 2-支持手機/MP4/MP3/CD/筆記本等外接音頻輸入

注意事項

1-可充電電池不可拆卸。2-開車時不要使用耳機,避免發生交通事故。3-包裝必須保留,因爲它包含重要信息。

安全環保處置

請協助保護環境!正確處置產品
 該標識表示產品在歐盟地區不能和其他家用廢物一起處置。
 為了防止廢物管理沒有管控而導致可能的對環境和人體健康的傷害,有責任回收產品確保物質資源可持續再利用。為了回收使用過的器具,請使用回收系統或聯繫經銷商,以便產品回收符合環保要求。

FCC警告

未經規分明確批准的任何更改或修改都可能使用戶操作設備的權限失效。
 此設備符合FCC規則的第15部分。運行受以下兩個條件的限制:

- 1-本裝置不得造成有害幹擾。
- 2-本設備必須接受接收到的任何幹擾,包括可能導致不需要的操作的幹擾。

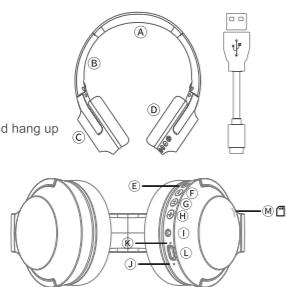
註:根據FCC規則的第15部分,本設備已經過測試,發現符合B類數字設備的限制。
 這些限制旨在提供合理的保護,以防止住宅安裝中的有害幹擾。該設備產生用途並可輻射射頻能量,如果不按照說明安裝和使用,可能會對無線電通信造成有害幹擾。
 但是,不能保證在特定安裝中不會發生幹擾。
 如果此設備確實對無線電或電視接收造成有害幹擾(可通過關閉和打開設備來確定),則鼓勵用戶嘗試通過以下一種或多種措施糾正幹擾:

- 重新定向或重新定位接收天線。
- 增加設備和接收器之間的間隔。
- 將設備連接到與接收器連接的電路不同的電路上的插座中。
- 向經銷商或經驗豐富的廣播/電視技術人員尋求幫助。

該設備已經過評估,以滿足一般的射頻曝光要求。
 該裝置可以不受限制地在便攜曝光條件下使用。

PRODUCT AND ACCESSORIES

- (A) Head beam
- (B) Stretchable lever
- (C) Outer shell
- (D) Earpads Cover
- (E) Power switch/Mode
- (F) Volume-/previous
- (G) Play pause/answer and hang up
- (H) Volume+/next
- (I) 3.5MM audio input
- (J) MIC
- (K) Indicator light
- (L) MICRO USB port
- (M) TF card socket (TF card positive side facing to ear)



SPECIFICATIONS

BT version: V5.0
 BT pairing name: MINISO-TM-053
 Transmission distance: 10m
 Use time: 4h
 Charging time: within 2hrs
 Standby time: 300h
 Battery: 200mAh chargeable lithium battery
 FM frequency: 87.5-108MHz
 Wireless frequency: 2.402-2.480GHz
 Output power: 0.2mW
 SNR: 88Db

Loudspeaker: Ø40mm
 Sensitivity: 110±3dB S.P.L at 1KHZ
 Impedance: 32Ω
 Frequency response: 20Hz-20 KHz
 Rated power: 5mW×2
 Music time: 5h

USAGE INSTRUCTIONS

INSTRUCTIONS OF BUTTON OPERATION:

Hold E button for 3 seconds to turn on/off the headphones.
 If there is an incoming call when BT is connected, short press G button to answer the call, hold it to reject the call, or click twice to redial.
 When BT is connected, short press G button to play or pause music.
 When TF card is inserted for music play, short press G button to play or pause music.
 In FM mode, short press G button to auto search radio set.
 When BT is connected, short press H button to increase volume, hold it to next.
 In MP3 mode, short press H button to increase volume, hold it to next.
 In FM mode, short press H button to increase volume, hold it to next radio frequency point.

M:

Short press to switch mode BT/MP3/M
 When BT is connected, short press F button to turn down the volume, hold it to previous.

In MP3 mode, short press F button to turn down the volume, hold it to previous.

INDICATOR LIGHT:

When BT is connected, red and blue lights will flash quickly when pairing. Blue light will flash slowly after successful pairing.

In MP3 mode, the blue light flashes slowly when play music.
 In M status, the blue light stays on when listening to the radio and the blue light flashes quickly when searching radio sets.

When charging, the red light stays on and dims out when charging is completed.

OPERATION INSTRUCTION OF WIRELESS USE:

1-long press the E key for 3 seconds to power on, and boot the default wireless state.
 2-flashing red and blue lights, enter pairing state wirelessly.
 3-search for this product wirelessly with the wireless name of MINISO-TM-053 on your mobile phone.

4-when the phone searches for the MINISO-TM-053 device name, click to connect. If prompted for a password, the password is 0000.
 5-when the wireless connection is successful, the blue light flashes slowly.

6-Open the mobile music player to play music, this product can control wireless.Up and down music, play and pause music and call answer, redial and other functions.

INSTRUCTIONS FOR USING MP3:

1-long press E key for 3 seconds to power on.
 2-play TF memory card to enter MP3 song playback state or press E key to switch to MP3 play state.
 3-short press G key for MP3 play / pause.
 4-long press + or-for MP3 up and down control.
 5-short press + or-for MP3 volume control.

INSTRUCTIONS FOR USING FM:

1-long press E key for 3 seconds to power on.
 2-short press E key to FM mode.
 3-FM status short press G key to automatically search all stations that can be received at one time.
 4-long press + or-to select the radio station that has been searched.
 5-short press + or-for FM volume control.

LINE EXTERNAL AUDIO INPUT OPERATION INSTRUCTIONS:

1-Power on, plug in audio cable, enter AUX LINE IN mode.
 2-support external audio input such as mobile phone / MP4/MP3/CD notebook.

USAGE INSTRUCTIONS

- 1- Rechargeable battery may not be disassembled.
- 2- Do not use headset when driving to avoid traffic accident.
- 3- The packaging must be retained since it contains important information.

ENVIRONMENT FRIENDLY DISPOSAL

You can help protect the environment!

Correct Disposal of Product

This mark indicates the product should not be disposed of in the same way as other household wastes in EU regions. The product should be recycled to ensure sustainable reuse of resources and to prevent potential harm for the environment and human health caused by non-control of waste management. To recycle the used appliance, apply the recycling system or contact the franchiser to recycle the product according to the environmental protection requirements.

FCC WARNING:

This device complies with Part 15 of the FCC Rules. Operation is subject to the following two conditions:

- (1) This device may not cause harmful interference.
- (2) This device must accept any interference received, including interference that may cause undesired operation.

Caution: Changes or modifications not expressly approved by the party responsible for compliance could void the user's authority to operate the equipment.

NOTE: This equipment has been tested and found to comply with the limits for a Class B digital device, pursuant to Part 15 of the FCC Rules. These limits are designed to provide reasonable protection against harmful interference in a residential installation. This equipment generates, uses and can radiate radio frequency energy and, if not installed and used in accordance with the instructions, may cause harmful interference to radio communications. However, there is no guarantee that interference will not occur in a particular installation. If this equipment does cause harmful interference to radio or television reception, which can be determined by turning the equipment off and on, the user is encouraged to try to correct the interference by one or more of the following measures: —Reorient or relocate the receiving antenna. —Increase the separation between the equipment and receiver. —Connect the equipment into an outlet on a circuit different from that to which the receiver is connected. —Consult the dealer or an experienced radio/TV technician for help.

FCC Radiation Exposure Statement:

This equipment complies with FCC radiation exposure limits set forth for an uncontrolled environment. This transmitter must not be co-located or operating in conjunction with any other antenna or transmitter.

2015113901

MADE IN CHINA
 FABRIQUÉ EN CHINE
 صنع في الصين
 HECHO EN CHINA
 www.miniso.com



FCC ID: 2ART4-TM-053