

6 Appendix A

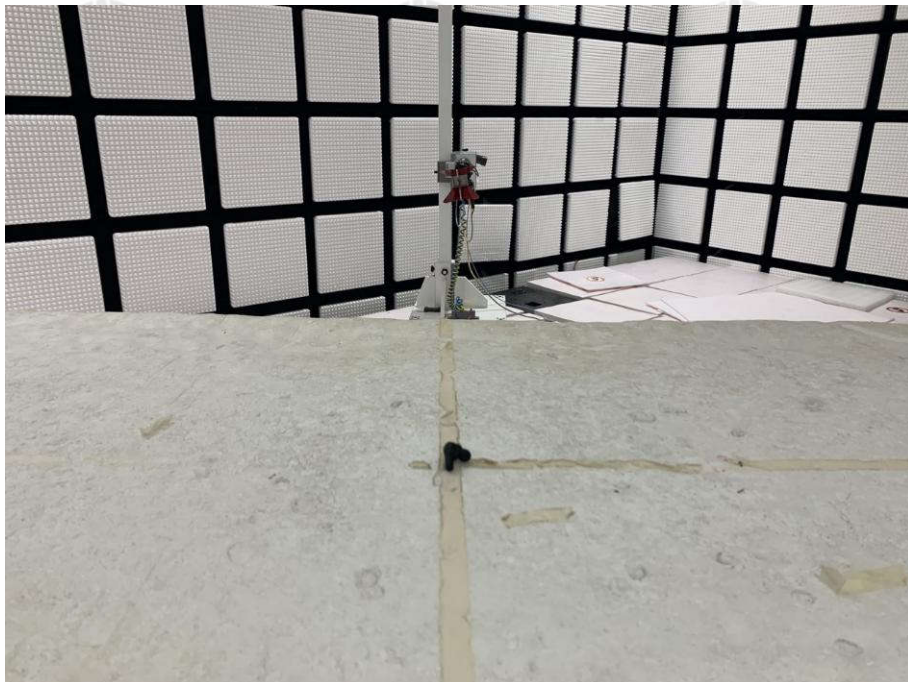
Refer to Appendix: Bluetooth Classic of EED32O80444201

7 PHOTOGRAPHS OF TEST SETUP

Test model No.:T7



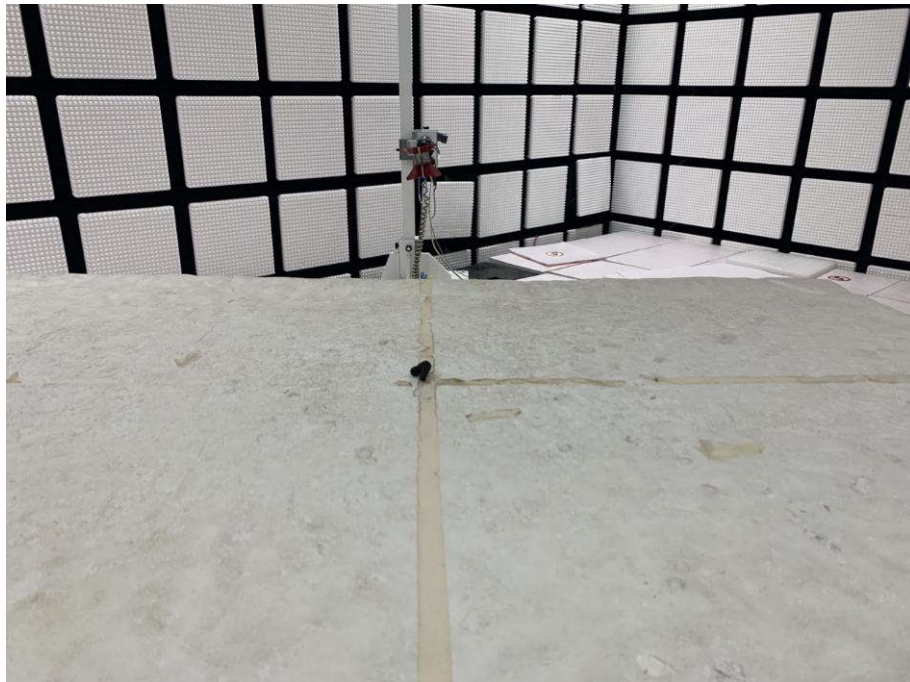
Radiated spurious emission Test Setup-1 left ear(Below 1GHz)



Radiated spurious emission Test Setup-2 left ear(Above 1GHz)



Radiated spurious emission Test Setup-1 right ear(Below 1GHz)



Radiated spurious emission Test Setup-2 right ear(Above 1GHz)



**Radiated spurious emission Test Setup-3(Above 1GHz)
There are absorbing materials under the ground.**

8 PHOTOGRAPHS OF EUT Constructional Details

Test model No.: T7



View of Product-1



View of Product-2



View of Product-3



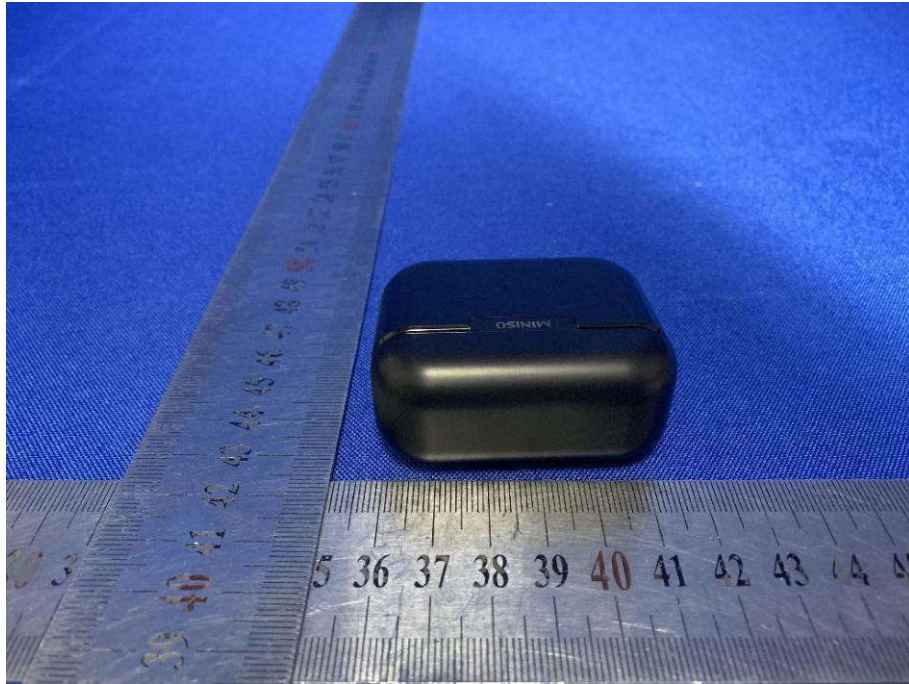
View of Product-4



View of Product-5



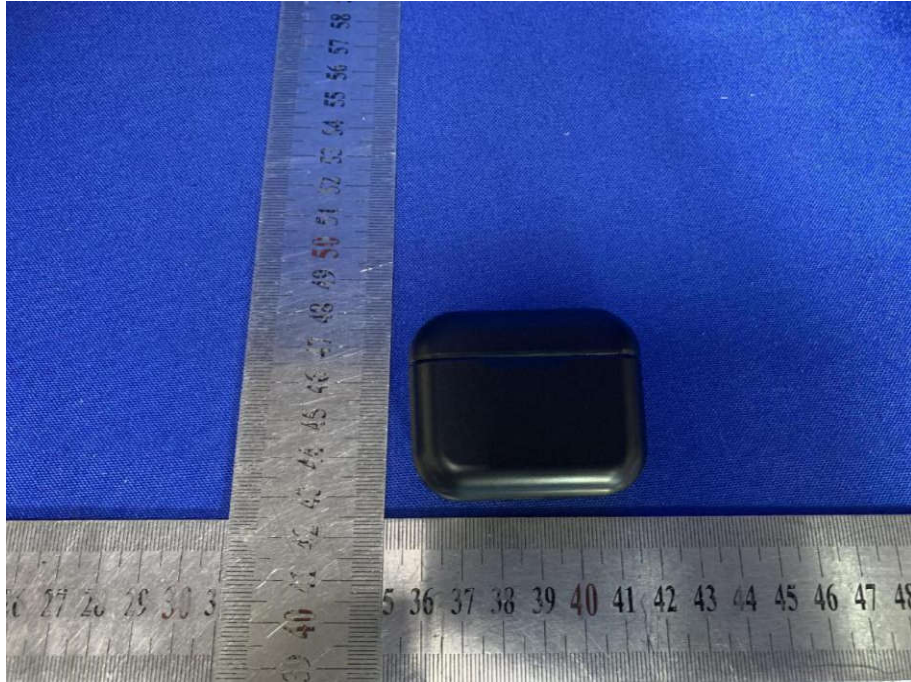
View of Product-6



View of Product-7



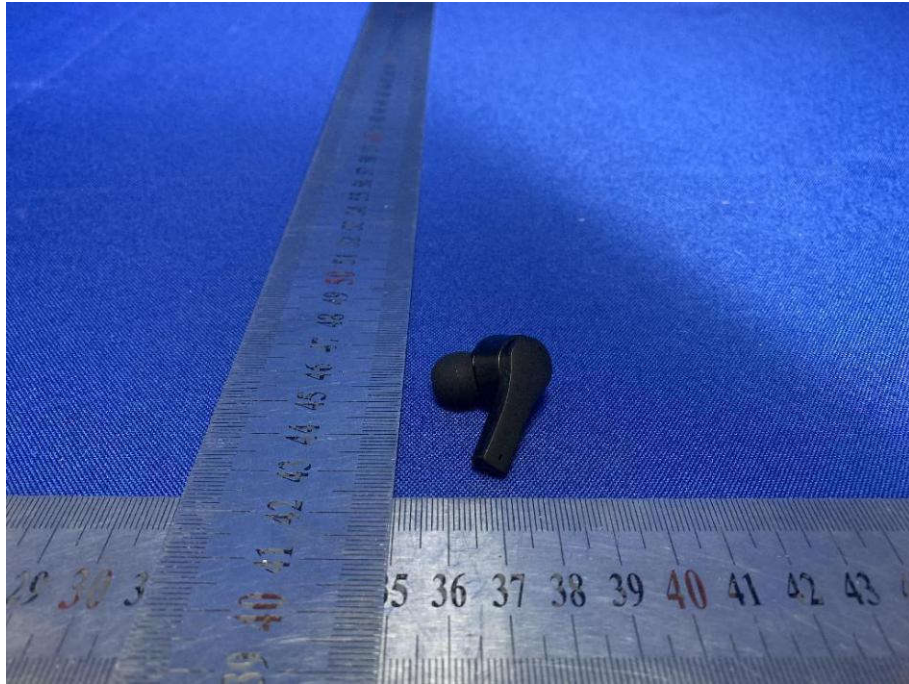
View of Product-8



View of Product-9



View of Product-10



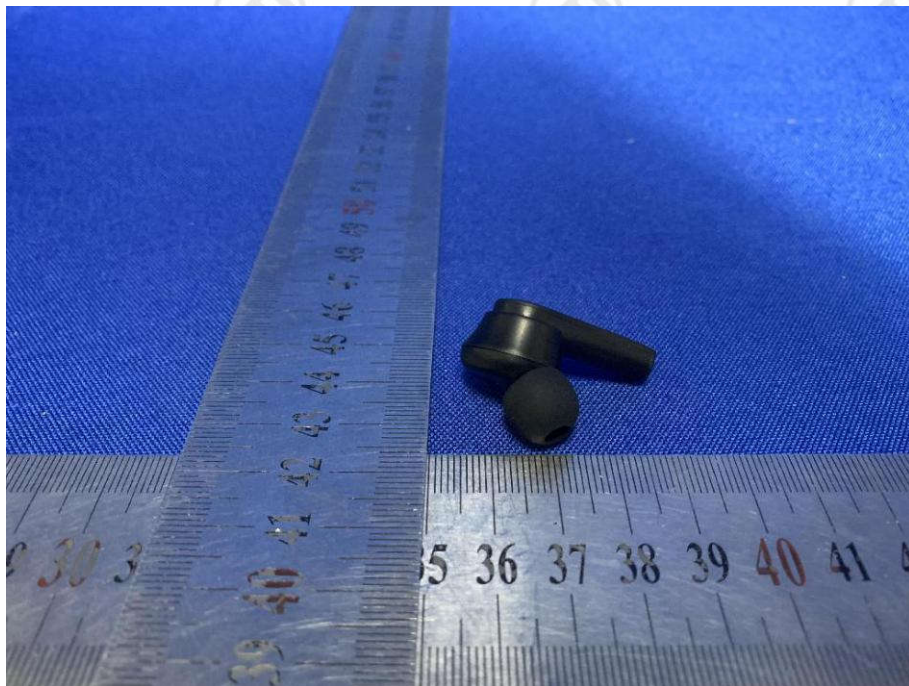
View of Product-11 Ear L



View of Product-12 Ear L



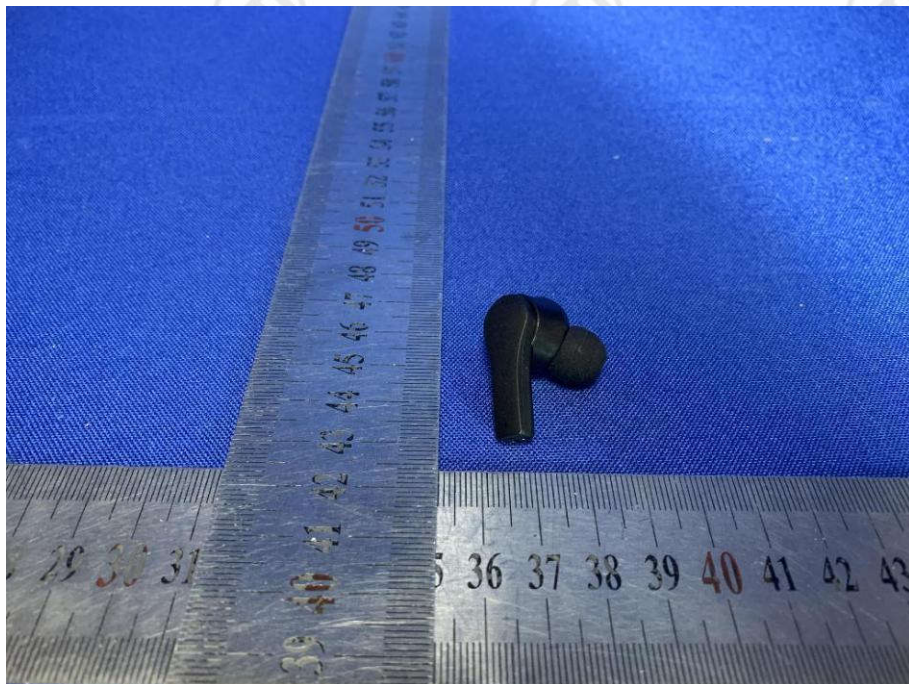
View of Product-13 Ear L



View of Product-14 Ear L



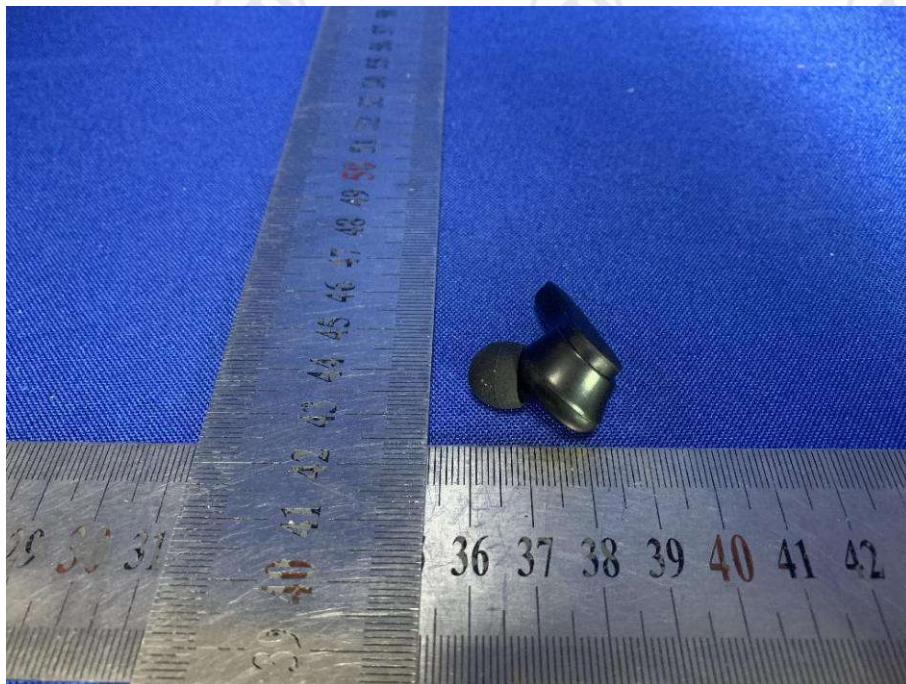
View of Product-15 Ear L



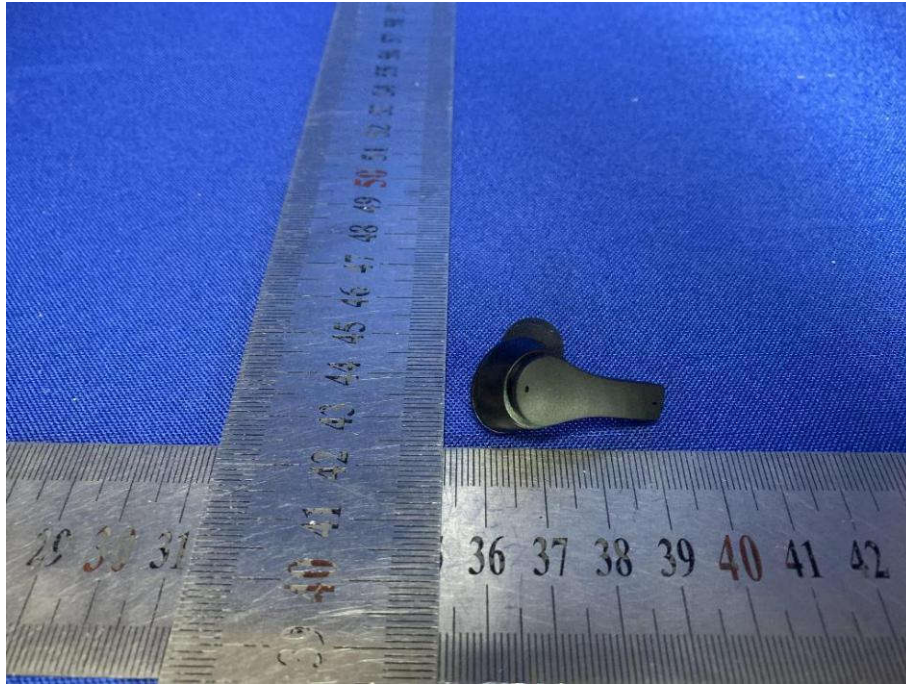
View of Product-16 Ear R



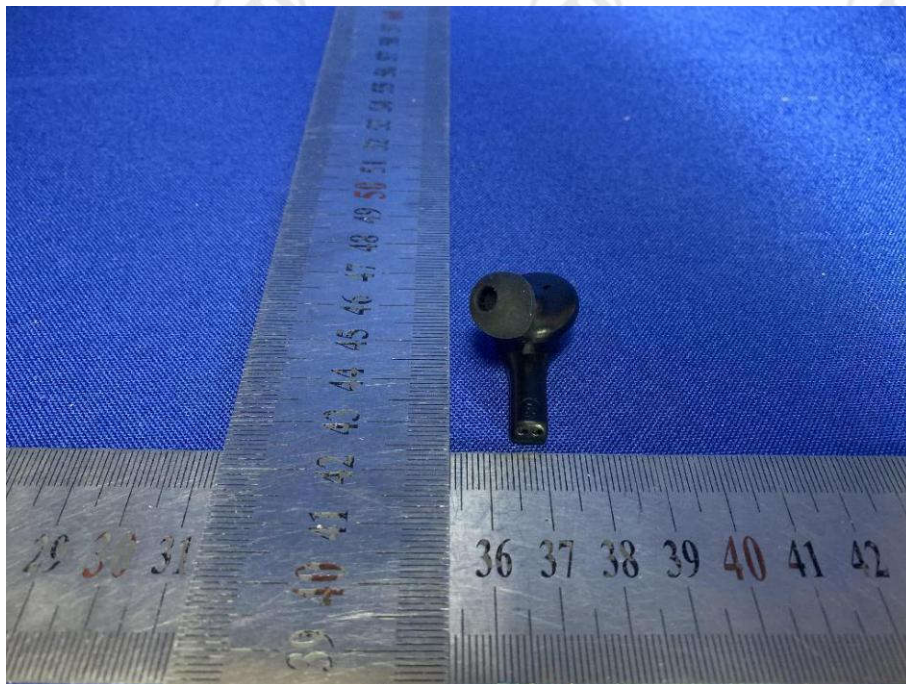
View of Product-17 Ear R



View of Product-18 Ear R



View of Product-19 Ear R



View of Product-20 Ear R



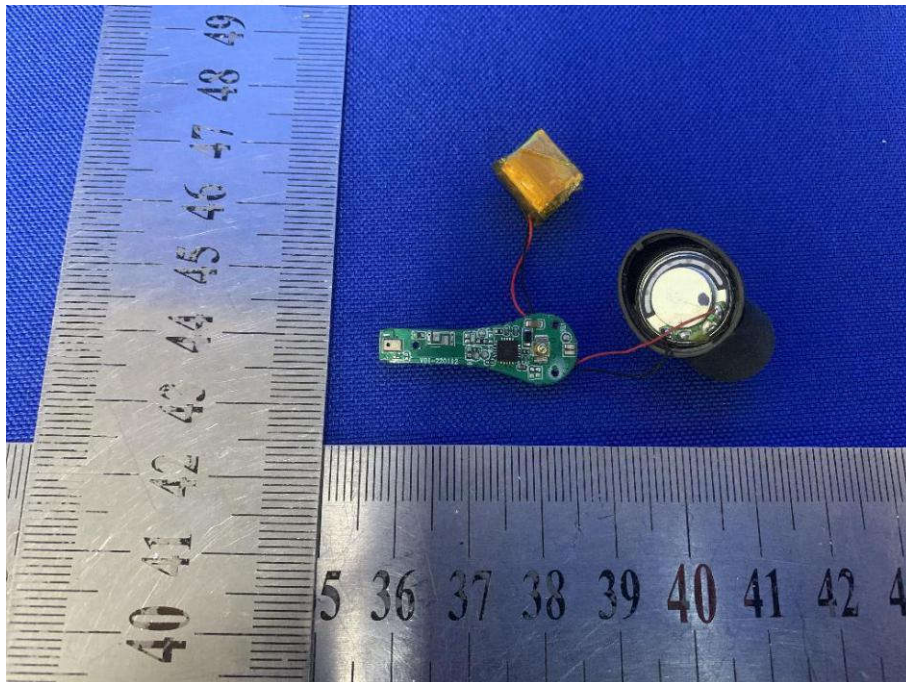
View of Product-21 Ear R



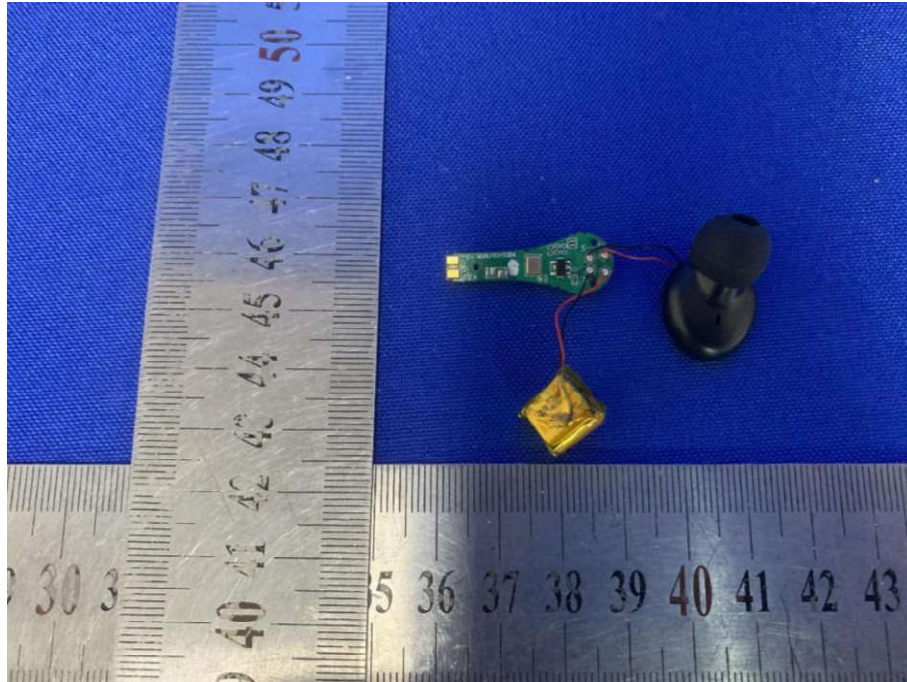
View of Product-22 Ear L



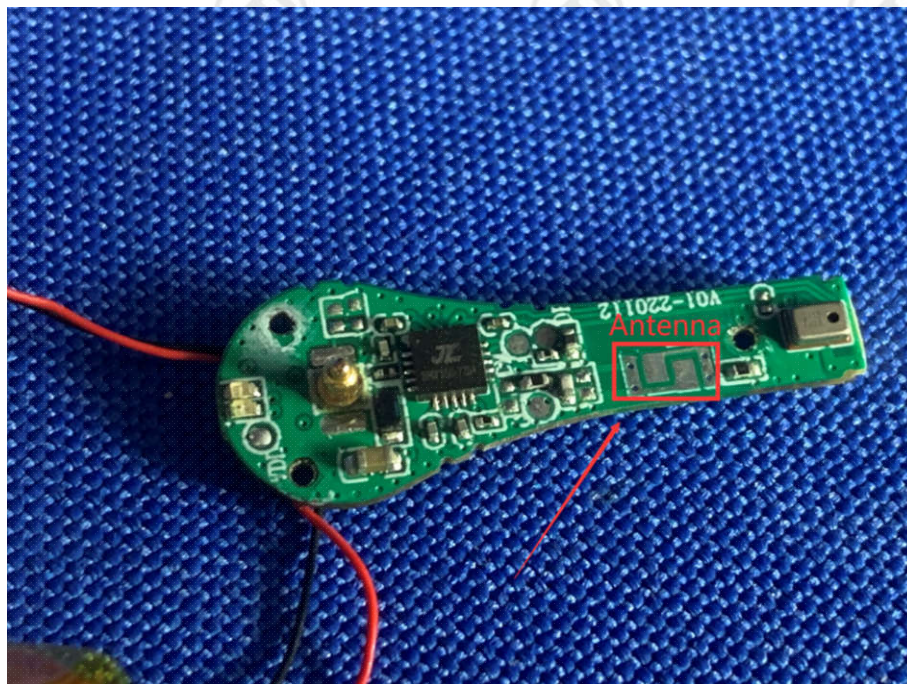
View of Product-23 Ear L



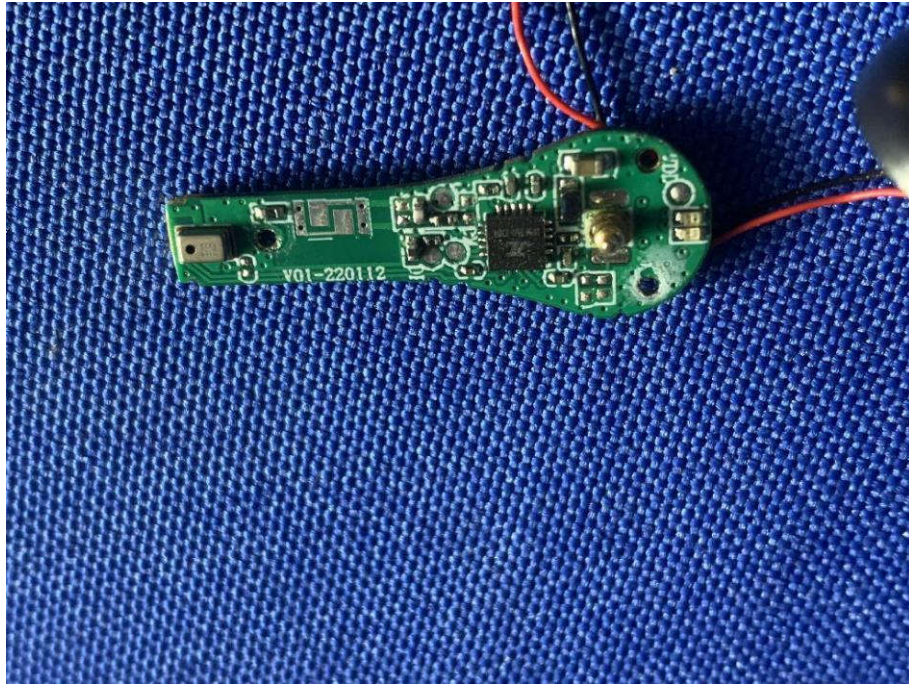
View of Product-24 Ear L



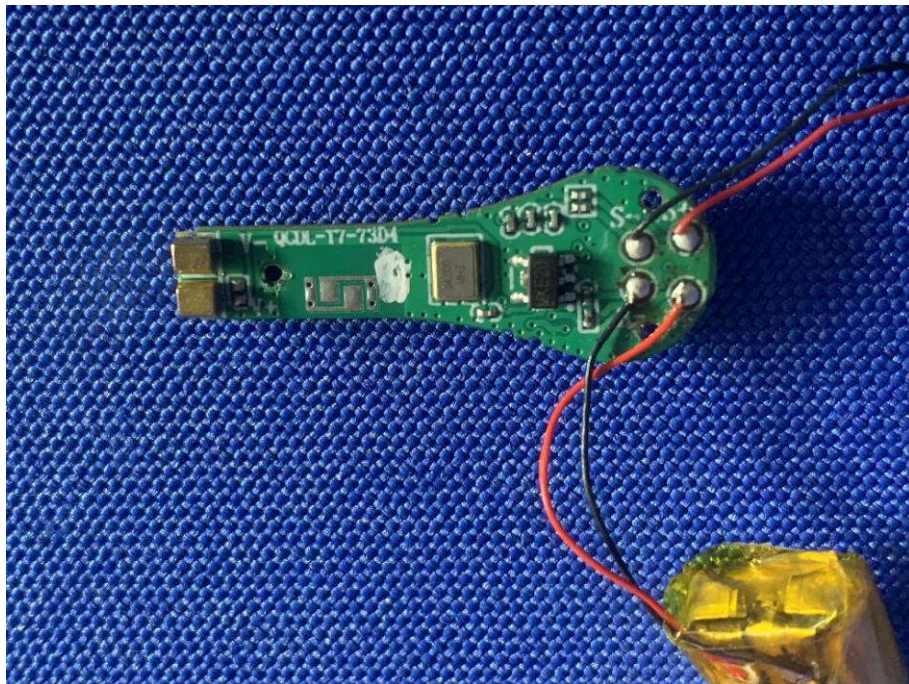
View of Product-25 Ear L



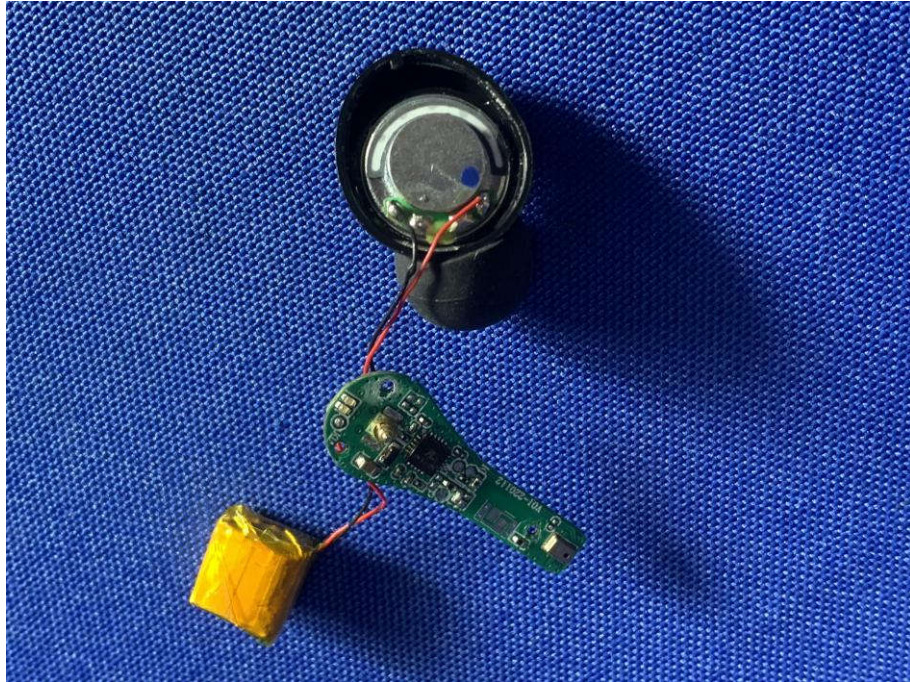
View of Product-26 Ear L



View of Product-27 Ear L



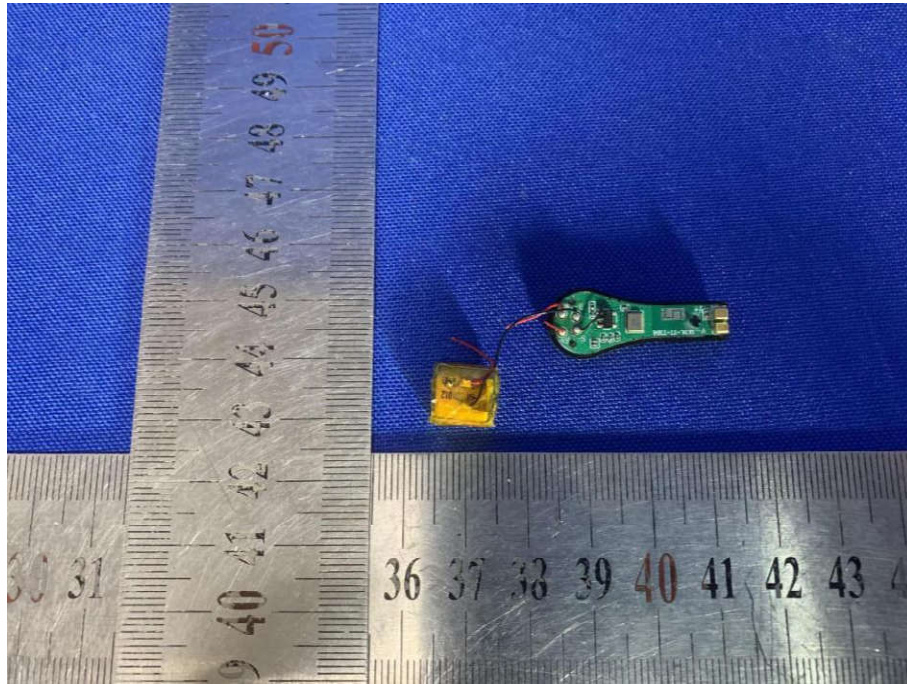
View of Product-28 Ear L



View of Product-29 Ear L



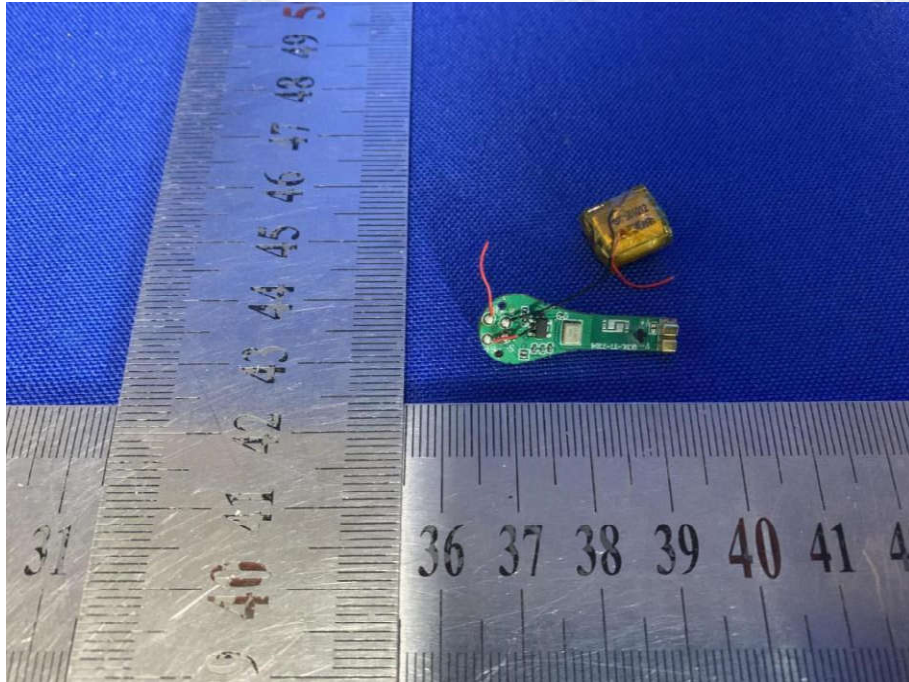
View of Product-30 Ear R



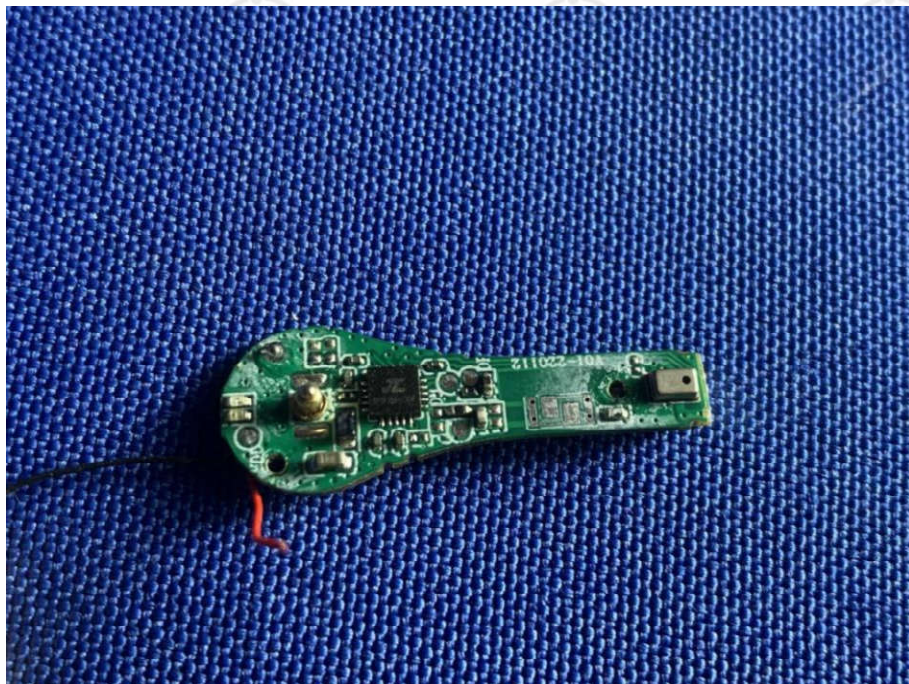
View of Product-31 Ear R



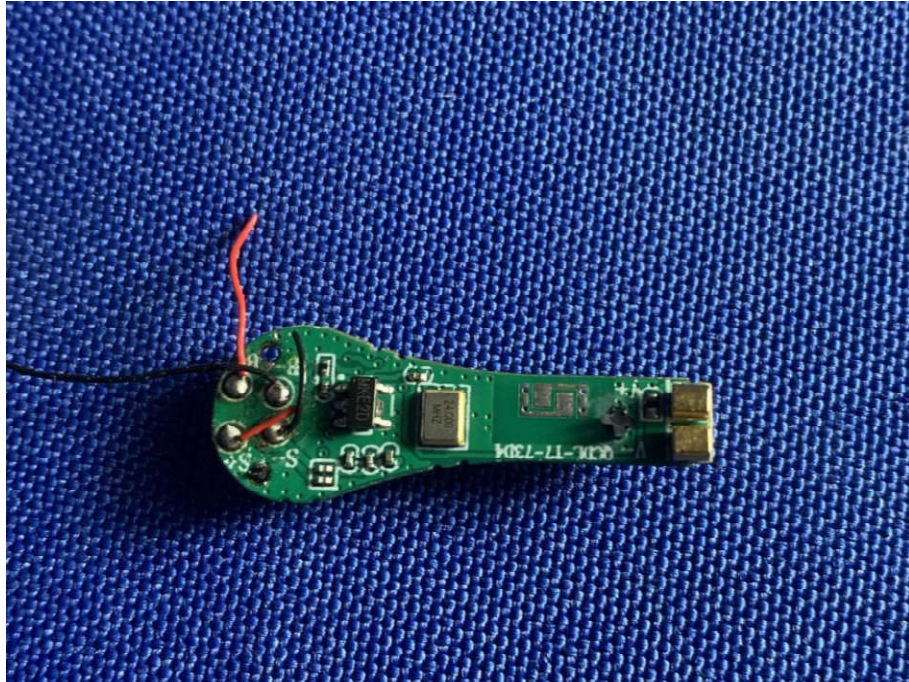
View of Product-32 Ear R



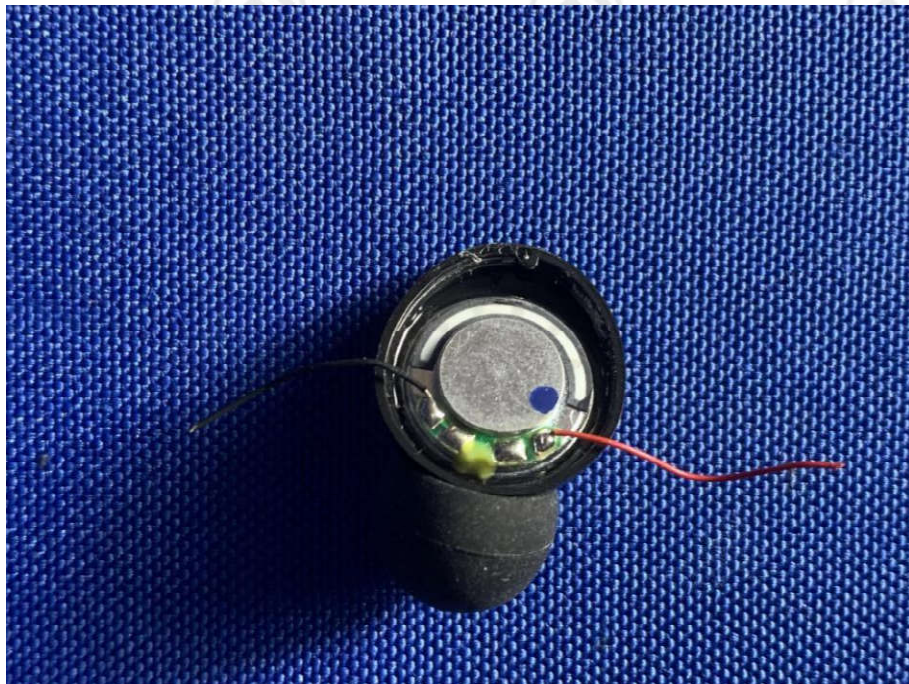
View of Product-33 Ear R



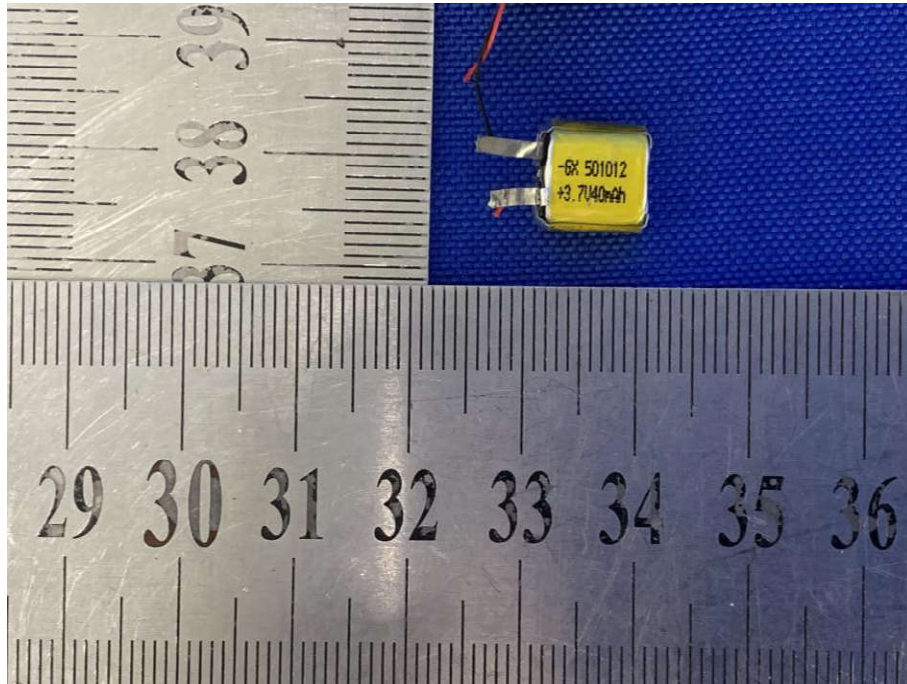
View of Product-34 Ear R



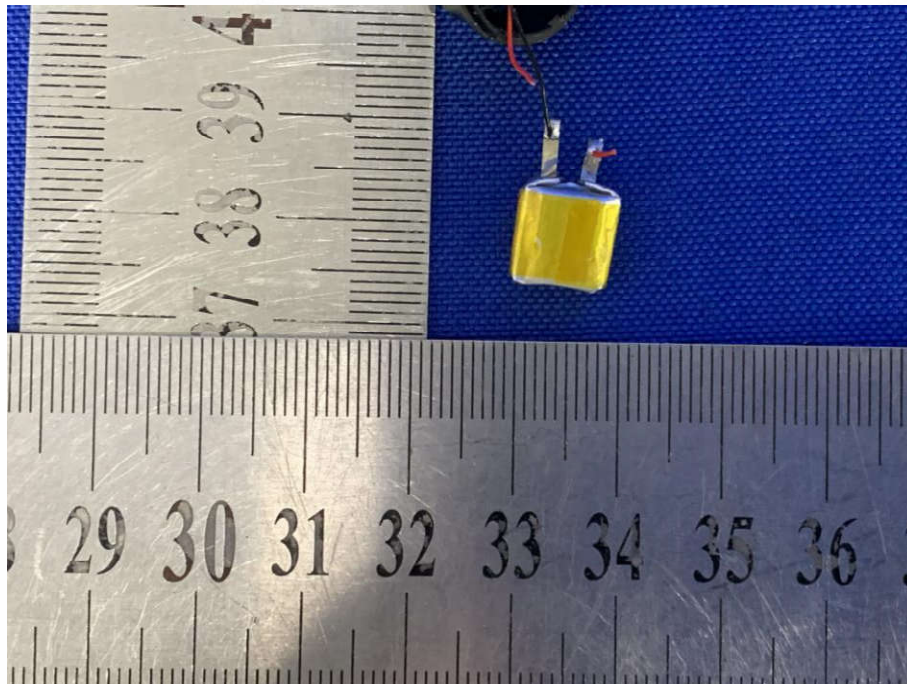
View of Product-35 Ear R



View of Product-36 Ear R



View of Product-37



View of Product-38

The test report is effective only with both signature and specialized stamp, The result(s) shown in this report refer only to the sample(s) tested. Without written approval of CTI, this report can't be reproduced except in full.

*** End of Report ***