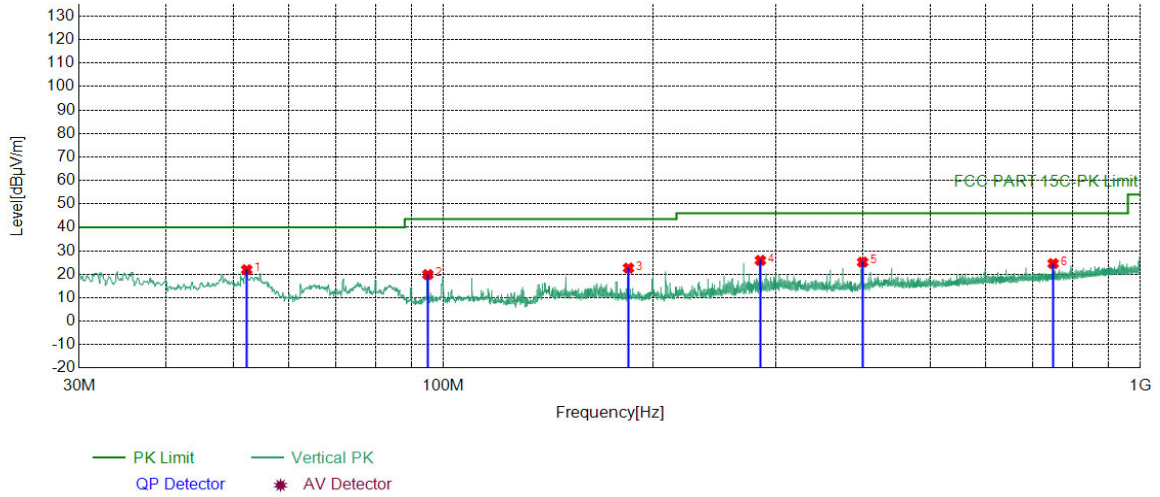


Test Graph



Suspected List									
NO	Freq. [MHz]	Factor [dB]	Reading [dBμV]	Level [dBμV/m]	Limit [dBμV/m]	Margin [dB]	Result	Polarity	Remark
1	52.2152	-17.47	39.41	21.94	40.00	18.06	PASS	Vertical	PK
2	94.9965	-19.27	39.15	19.88	43.50	23.62	PASS	Vertical	PK
3	184.3424	-19.36	42.00	22.64	43.50	20.86	PASS	Vertical	PK
4	285.0385	-15.83	41.74	25.91	46.00	20.09	PASS	Vertical	PK
5	399.6070	-12.94	38.11	25.17	46.00	20.83	PASS	Vertical	PK
6	750.0060	-7.00	31.56	24.56	46.00	21.44	PASS	Vertical	PK

Radiated Spurious Emission above 1GHz:

Mode:		2.4G Transmitting						
Channel:		2402 MHz						
NO.	Freq. [MHz]	Height [cm]	Azimuth [deg]	Level [dBm]	Limit [dBm]	Margin [dB]	Result	Polarity
1	1293.0293	1.04	42.29	43.33	74.00	30.67	Pass	Horizontal
2	1655.8656	2.65	41.25	43.90	74.00	30.10	Pass	Horizontal
3	4804.1203	-16.23	64.06	47.83	74.00	26.17	Pass	Horizontal
4	7205.2804	-11.83	63.65	51.82	74.00	22.18	Pass	Horizontal
5	10434.4956	-6.36	50.92	44.56	74.00	29.44	Pass	Horizontal
6	14401.7601	1.19	48.52	49.71	74.00	24.29	Pass	Horizontal
7	1397.4397	1.38	43.15	44.53	74.00	29.47	Pass	Vertical
8	1794.4794	3.26	41.62	44.88	74.00	29.12	Pass	Vertical
9	4804.1203	-16.23	60.91	44.68	74.00	29.32	Pass	Vertical
10	7207.2805	-11.83	58.02	46.19	74.00	27.81	Pass	Vertical
11	9765.4510	-7.49	51.67	44.18	74.00	29.82	Pass	Vertical
12	13661.7108	-1.72	49.49	47.77	74.00	26.23	Pass	Vertical

Mode:		2.4G Transmitting						
Channel:		2440 MHz						
NO.	Freq. [MHz]	Height [cm]	Azimuth [deg]	Level [dBm]	Limit [dBm]	Margin [dB]	Result	Polarity
1	1305.6306	1.08	42.55	43.63	74.00	30.37	Pass	Horizontal
2	1885.2885	3.92	40.69	44.61	74.00	29.39	Pass	Horizontal
3	4881.1254	-16.21	63.07	46.86	74.00	27.14	Pass	Horizontal
4	7319.2880	-11.66	59.60	47.94	74.00	26.06	Pass	Horizontal
5	10740.5160	-6.37	51.29	44.92	74.00	29.08	Pass	Horizontal
6	13300.6867	-3.46	50.51	47.05	74.00	26.95	Pass	Horizontal
7	1310.2310	1.09	42.27	43.36	74.00	30.64	Pass	Vertical
8	1912.2912	4.09	40.83	44.92	74.00	29.08	Pass	Vertical
9	4881.1254	-16.21	58.23	42.02	74.00	31.98	Pass	Vertical
10	7321.2881	-11.65	54.30	42.65	74.00	31.35	Pass	Vertical
11	10208.4806	-7.07	53.11	46.04	74.00	27.96	Pass	Vertical
12	12533.6356	-4.59	52.63	48.04	74.00	25.96	Pass	Vertical

Mode:		2.4G Transmitting						
Channel:		2480 MHz						
NO.	Freq. [MHz]	Height [cm]	Azimuth [deg]	Level [dBm]	Limit [dBm]	Margin [dB]	Result	Polarity
1	1312.2312	1.10	42.20	43.30	74.00	30.70	Pass	Horizontal
2	1778.8779	3.21	41.06	44.27	74.00	29.73	Pass	Horizontal
3	4959.1306	-15.98	62.14	46.16	74.00	27.84	Pass	Horizontal
4	7439.2960	-11.34	55.99	44.65	74.00	29.35	Pass	Horizontal
5	9878.4586	-7.14	52.06	44.92	74.00	29.08	Pass	Horizontal
6	11812.5875	-6.07	53.44	47.37	74.00	26.63	Pass	Horizontal
7	1163.0163	0.82	42.48	43.30	74.00	30.70	Pass	Vertical
8	1745.4745	3.09	42.13	45.22	74.00	28.78	Pass	Vertical
9	4961.1307	-15.97	57.59	41.62	74.00	32.38	Pass	Vertical
10	7159.2773	-11.73	54.04	42.31	74.00	31.69	Pass	Vertical
11	9220.4147	-7.89	52.24	44.35	74.00	29.65	Pass	Vertical
12	12502.6335	-4.81	51.53	46.72	74.00	27.28	Pass	Vertical

Remark:

- 1) The field strength is calculated by adding the Antenna Factor, Cable Factor & Preamplifier. The basic equation with a sample calculation is as follows:

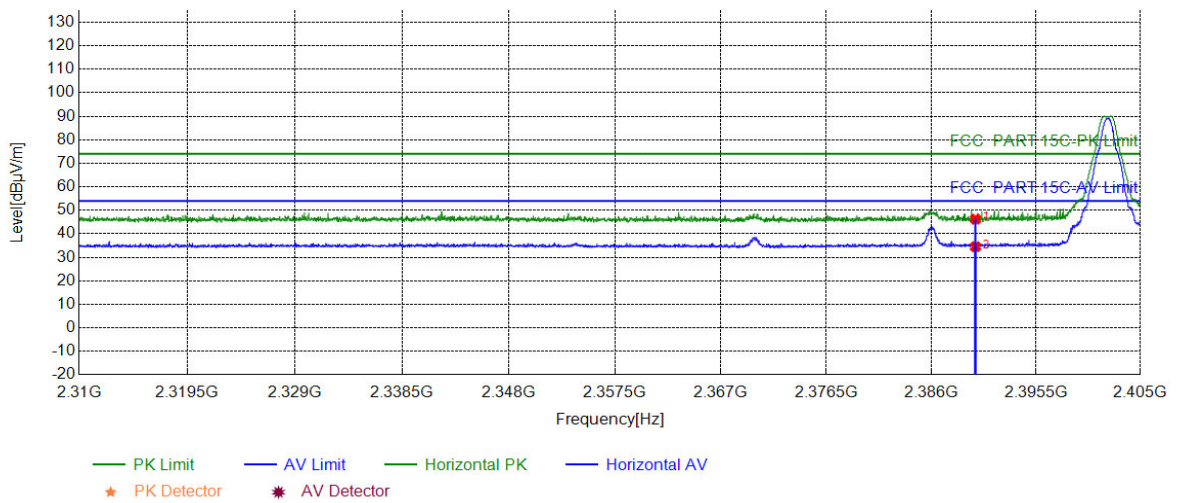
$$\text{Final Test Level} = \text{Receiver Reading} + \text{Antenna Factor} + \text{Cable Factor} - \text{Preamplifier Factor}$$
- 2) Scan from 9kHz to 25GHz, the disturbance above 10GHz and below 30MHz was very low. As shown in this section, for frequencies above 1GHz, the field strength limits are based on average limits. However, the peak field strength of any emission shall not exceed the maximum permitted average limits specified above by more than 20 dB under any condition of modulation. So, only the peak measurements were shown in the report.

Restricted bands:

Test plot as follows:

Mode:	2.4G Transmitting	Channel:	2402 MHz
Remark:			

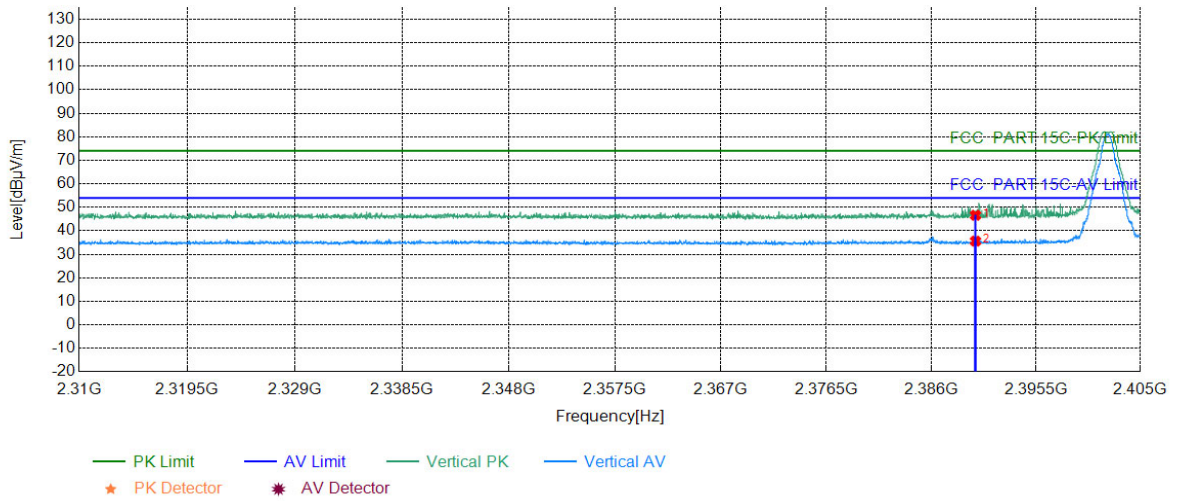
Test Graph



Suspected List									
NO	Freq. [MHz]	Factor [dB]	Reading [dBµV]	Level [dBµV/m]	Limit [dBµV/m]	Margin [dB]	Result	Polarity	Remark
1	2390.0000	5.77	40.47	46.24	74.00	27.76	PASS	Horizontal	PK
2	2390.0000	5.77	28.75	34.52	54.00	19.48	PASS	Horizontal	AV

Mode:	2.4G Transmitting	Channel:	2402 MHz
Remark:			

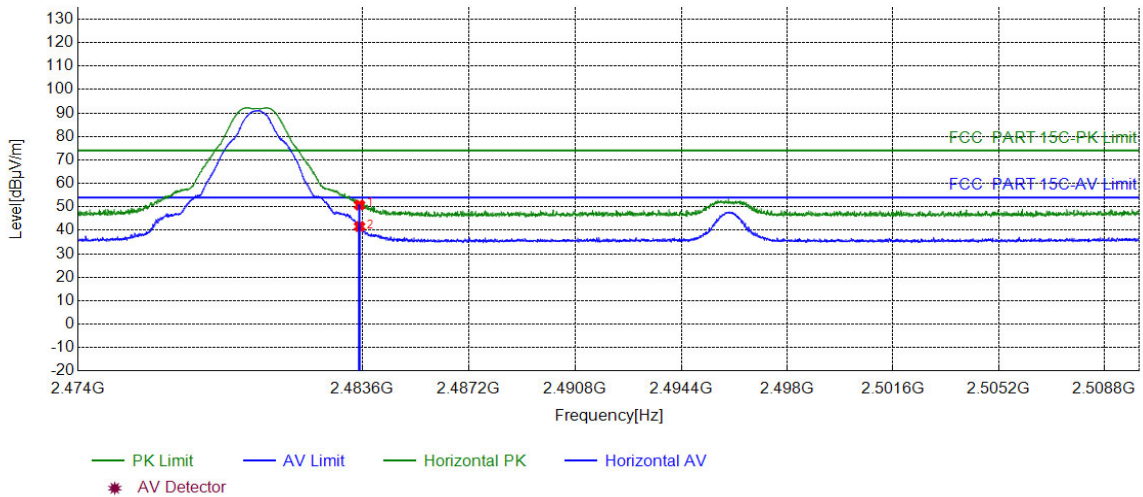
Test Graph



Suspected List									
NO	Freq. [MHz]	Factor [dB]	Reading [dBµV]	Level [dBµV/m]	Limit [dBµV/m]	Margin [dB]	Result	Polarity	Remark
1	2390.0000	5.77	40.84	46.61	74.00	27.39	PASS	Vertical	PK
2	2390.0000	5.77	29.84	35.61	54.00	18.39	PASS	Vertical	AV

Mode:	2.4G Transmitting	Channel:	2480 MHz
Remark:			

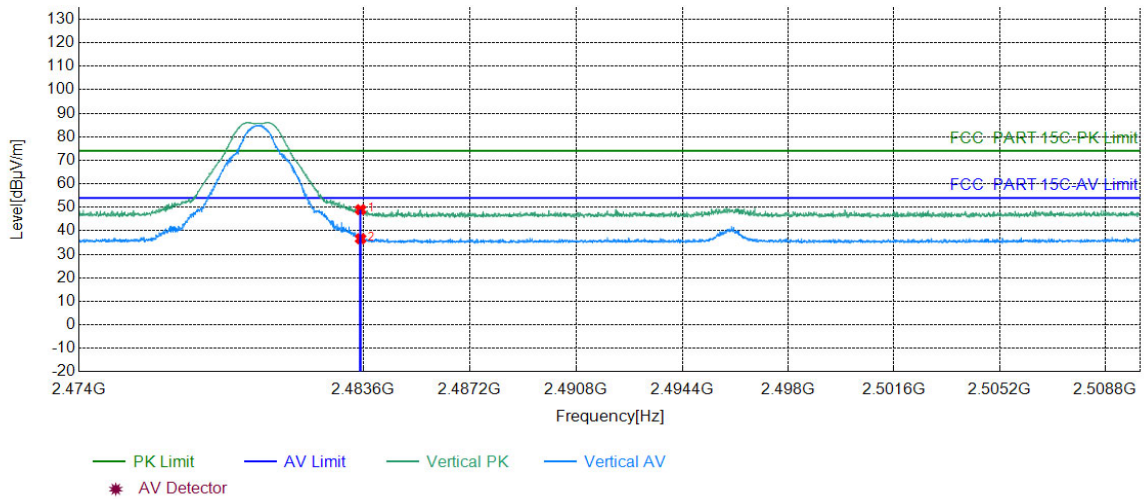
Test Graph



Suspected List									
NO	Freq. [MHz]	Factor [dB]	Reading [dBµV]	Level [dBµV/m]	Limit [dBµV/m]	Margin [dB]	Result	Polarity	Remark
1	2483.5000	6.57	44.21	50.78	74.00	23.22	PASS	Horizontal	PK
2	2483.5000	6.57	35.06	41.63	54.00	12.37	PASS	Horizontal	AV

Mode:	2.4G Transmitting	Channel:	2480 MHz
Remark:			

Test Graph



Suspected List									
NO	Freq. [MHz]	Factor [dB]	Reading [dBµV]	Level [dBµV/m]	Limit [dBµV/m]	Margin [dB]	Result	Polarity	Remark
1	2483.5000	6.57	42.43	49.00	74.00	25.00	PASS	Vertical	PK
2	2483.5000	6.57	30.06	36.63	54.00	17.37	PASS	Vertical	AV

Note:

The field strength is calculated by adding the Antenna Factor, Cable Factor & Preamplifier. The basic equation with a sample calculation is as follows:

Final Test Level = Receiver Reading - Correct Factor

Correct Factor = Preamplifier Factor - Antenna Factor - Cable Factor

8 Appendix A

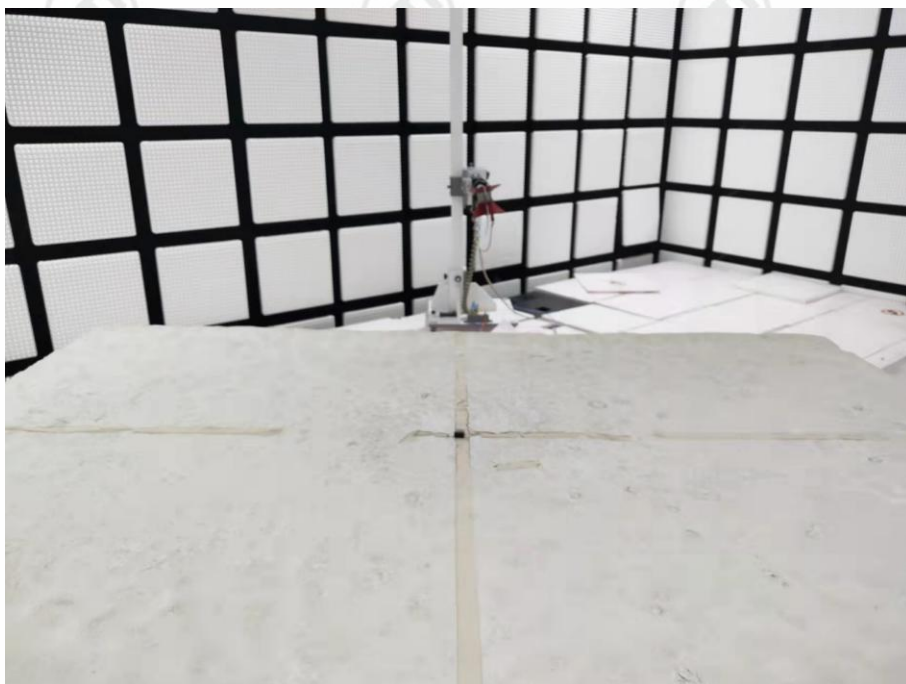
Refer to Appendix: 2.4G of EED32N81433503.

9 PHOTOGRAPHS OF TEST SETUP

Test model No.: SE65DP



Radiated spurious emission Test Setup-1(Below 1GHz)



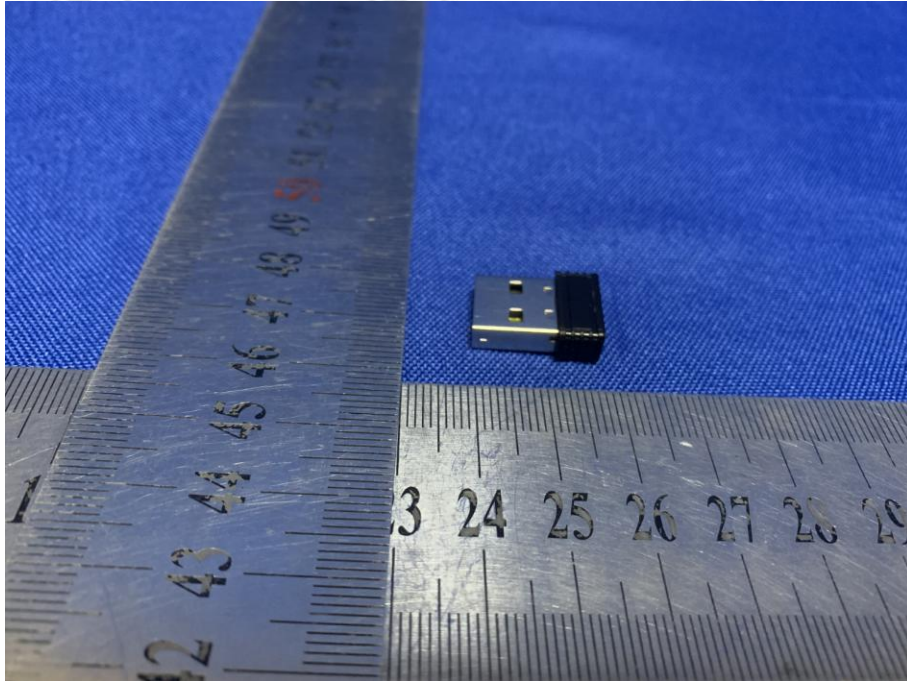
Radiated spurious emission Test Setup-2(Above 1GHz)



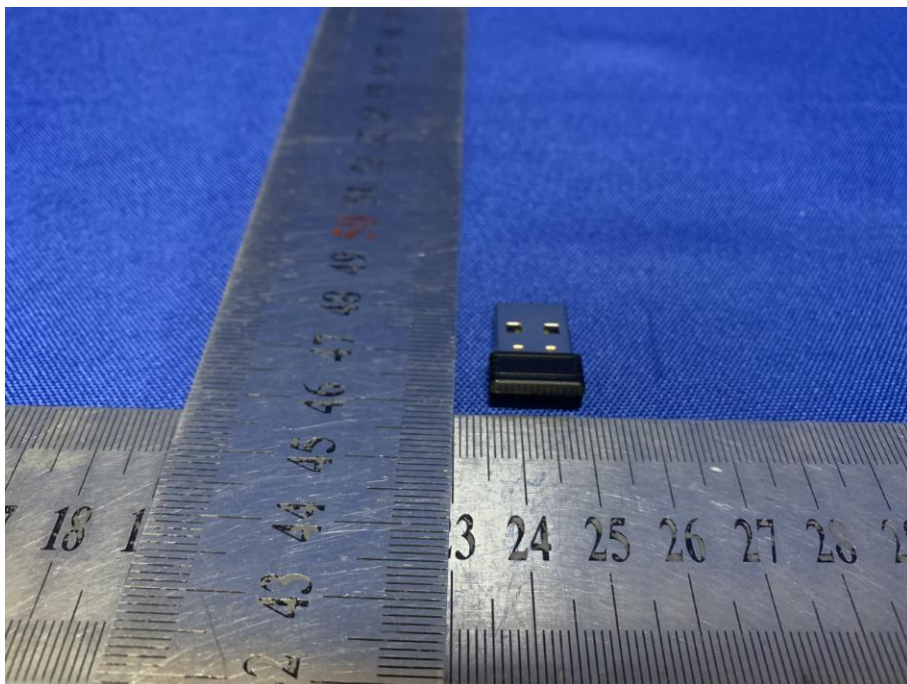
**Radiated spurious emission Test Setup-3(Above 1GHz)
There are absorbing materials under the ground.**

10 PHOTOGRAPHS OF EUT Constructional Details

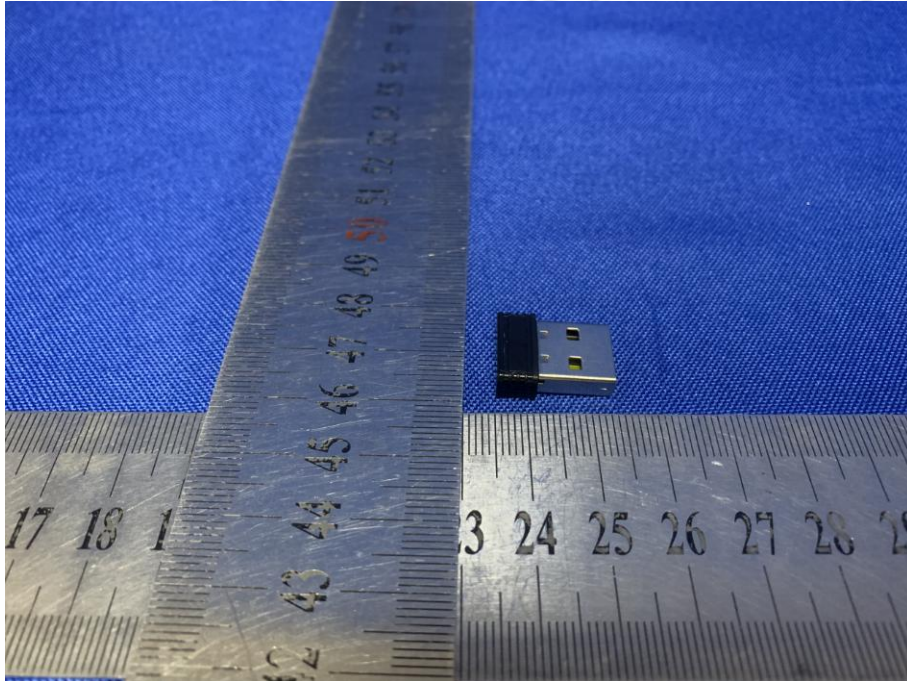
Test Model No.: SE65DP



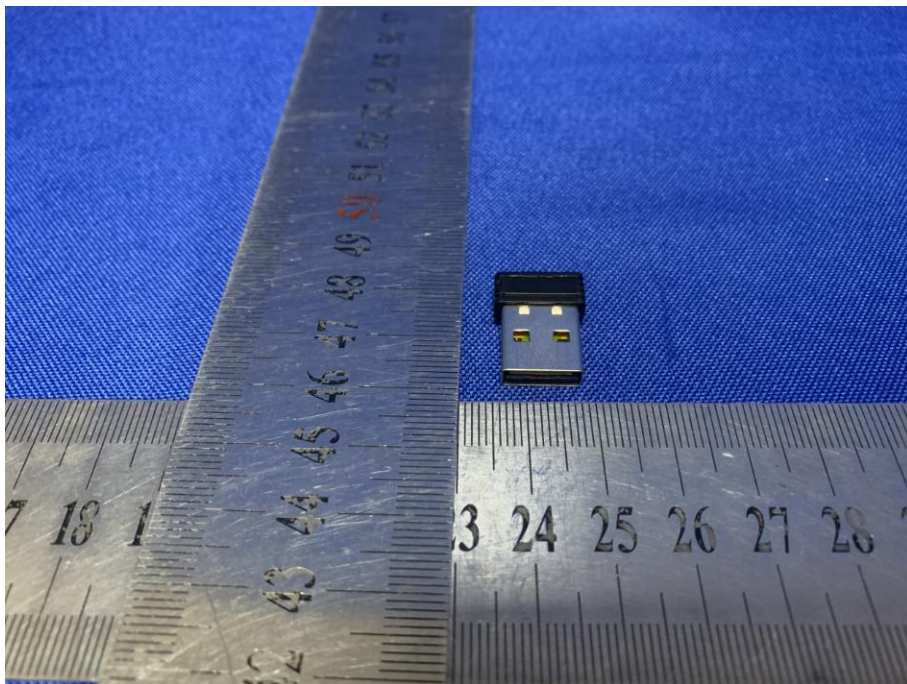
View of Product-1



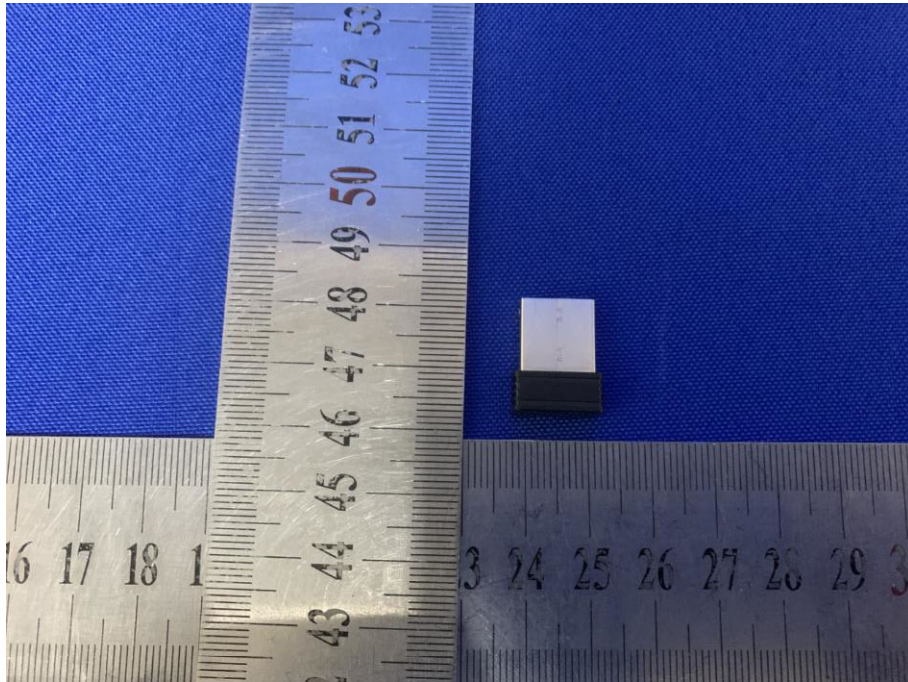
View of Product-2



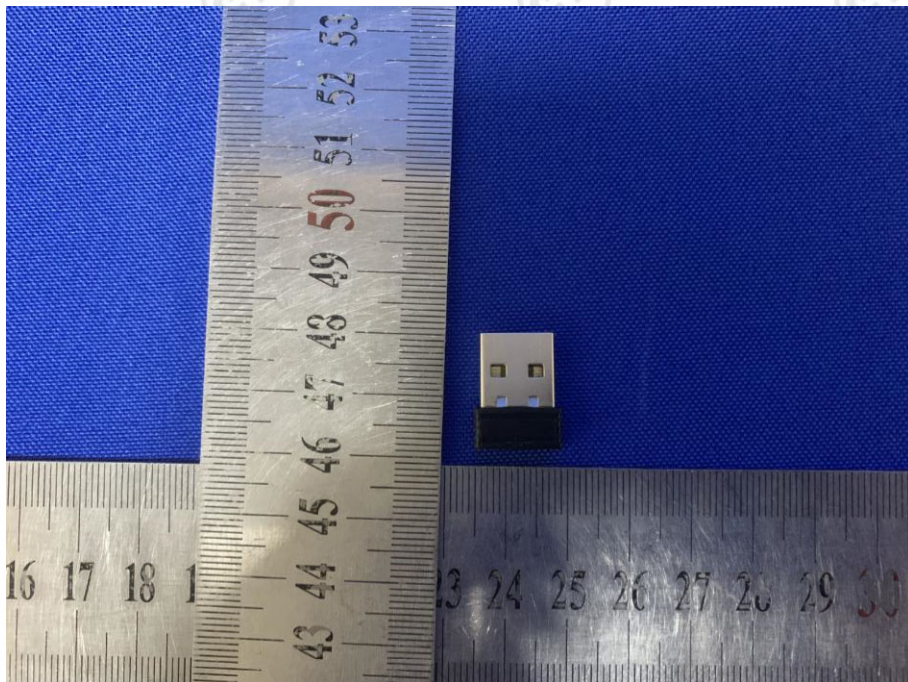
View of Product-3



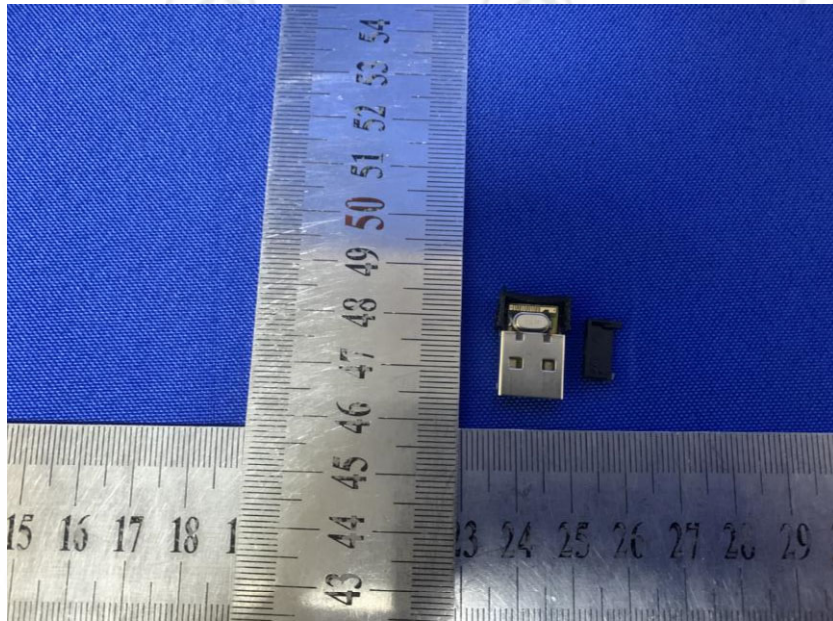
View of Product-4



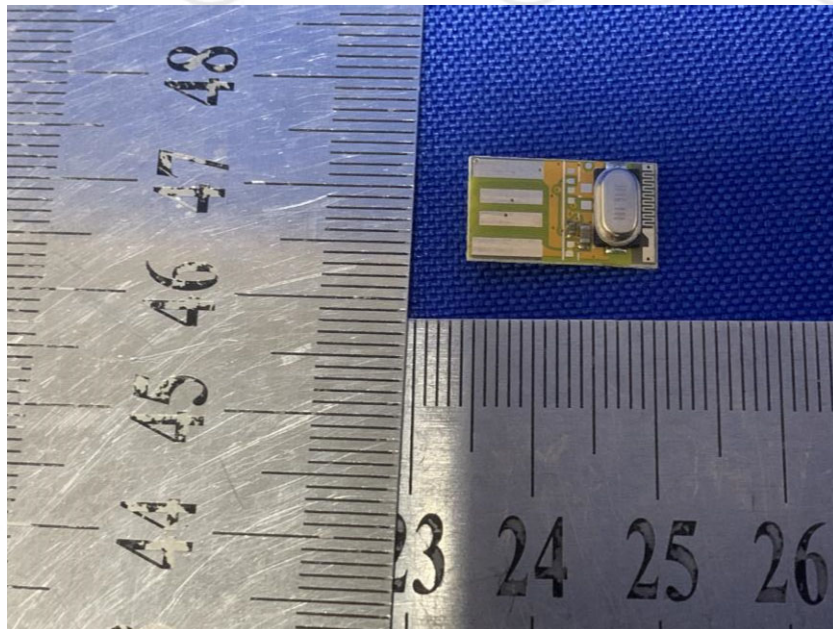
View of Product-5



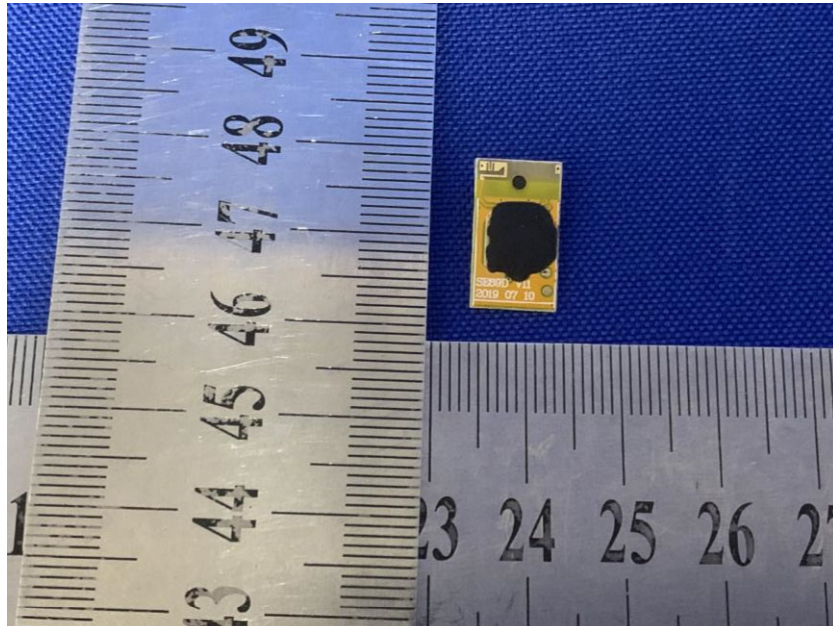
View of Product-6



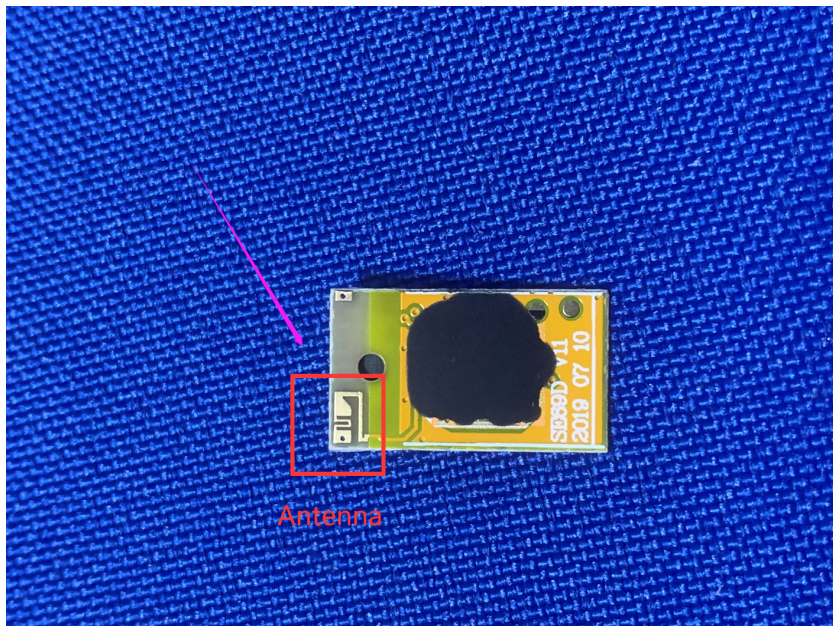
View of Product-7



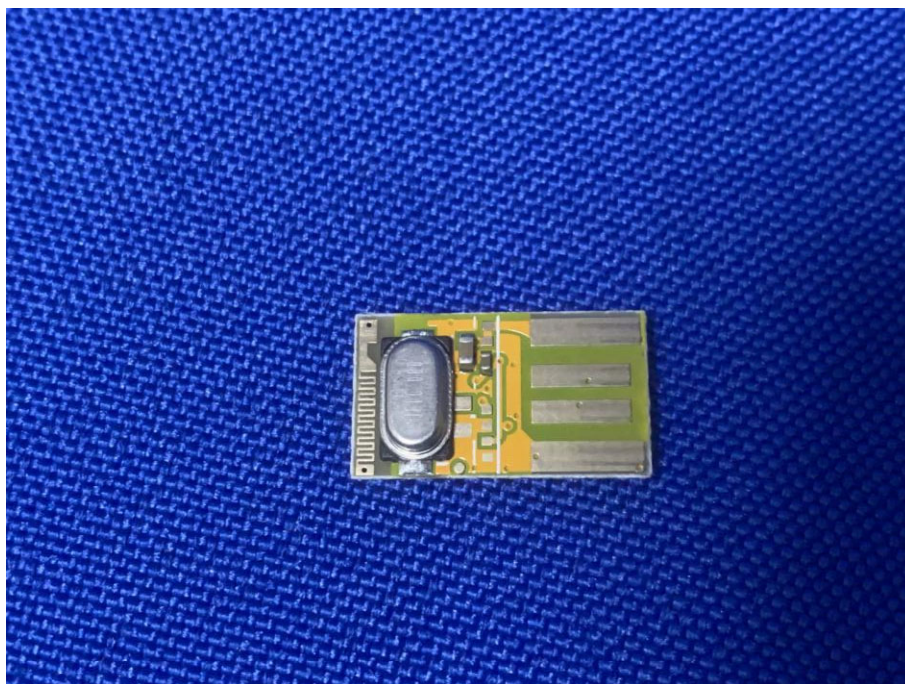
View of Product-8



View of Product-9



View of Product-10



View of Product-11

The test report is effective only with both signature and specialized stamp, The result(s) shown in this report refer only to the sample(s) tested. Without written approval of CTI, this report can't be reproduced except in full.

*** End of Report ***