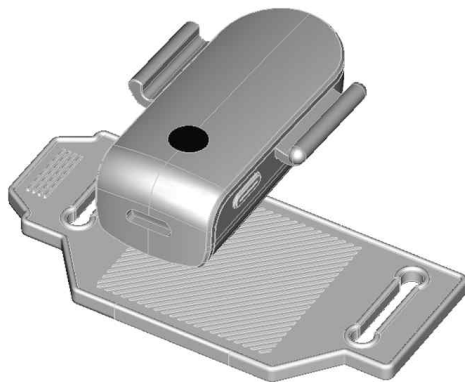


# User's Guide

1. Company Name : Tau Corp
2. Equipment Name (Model Name): Low Power Wireless Equipment (Equipment for Wireless Data Communication Systems)  
Model Name : TSP-V10
3. Manufacturing date : 2018 year
4. Manufacturer/Manufacturing country : Tau Corp / Republic of Korea
5. Authentication number :

## SwingPutt Product Configuration

- SwingPutt Sensor and Fixing Silicon Rubber Band



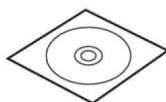
- USB cable for charging

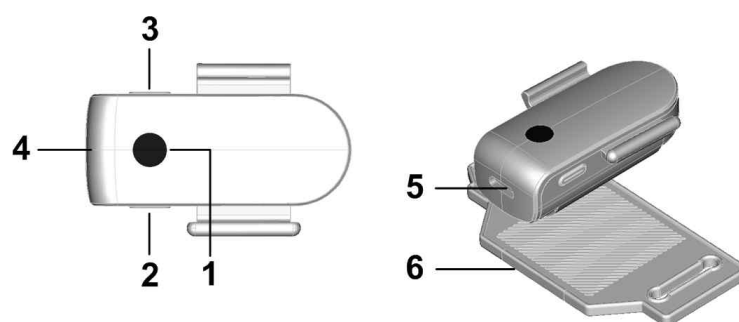


- USB Wireless Communication Dongle  
(Using Certified Wireless Dongle)



- Installation Software DVD-ROM or USB Flash Memory





No.	Name	Function
1	User Button 1	<p>Device reset Button</p> <p>When users press and release the User Button 1, the device resets and blinking green LED. This button is used when users switch the device from the Shutdown Mode to the Normal Operation Mode, or when resolving problems concerned device operation. In the Normal Operation Mode, the LED flashes. When the Bluetooth connection is not made, the red LED flashes, and when the connection is made in a normal way, the green LED blinks on and off.</p>
2	User Button 2	<p>This button is used to select the club outside the green or adjust the putting direction on the green.</p> <p>This button is also used to switches the device from normal operation mode to shutdown mode with the User Button 3 or switches the device from shutdown mode to normal operation mode.</p>
3	User Button 3	<p>This button is used to select the club outside the green or adjust the putting direction on the green.</p> <p>This button is also used to switches the device from normal operation mode to shutdown mode with the User Button 2 or switches the device from shutdown mode to normal operation mode.</p>
4	LED Indicator	<p>The LED Indicator allows users to recognize the status of the Device through LED.</p> <p>Red LED Flash: The red LED flash indicates that the Device is in the Normal Operation Mode but the Bluetooth connection is not set.</p> <p>Green LED Flash: The green LED flash indicates that the Device is in the Normal Operation and the Bluetooth connection is normal.</p> <p>Green LED Light: The green LED light indicates that the Device is in the Normal Operation Mode, the Bluetooth connection is normal, and preparation for acquiring swing information by users is completed.</p>
5	USB Charging Connector Port	<p>The USB charging connector port is a port to connect the USB cable for charging which is needed to charge an internal battery.</p>
6	Fixing silicon rubber band	<p>The band is used to attach and fix the device to the club shaft.</p>

## How to Connect the Enclosed Wireless USB Communication Dongle to Your Computer

Wireless-connect the product of SwingPutt to your computer as shown below:

Install the software provided with the product before connecting the wireless USB communication dongle. Put the wireless USB communication dongle into a USB port on your computer after installing the software. Press the Button 1 of the product to turn on the Device. The dongle and the product will be automatically connected.

Any USB port on your computer can be used.



## SwingPUTT Product specifications

	Specifications	Etc
Power	DC 5V	power supply voltage in charging. When using the device internal battery is used.
Power consumption	< 500 mA	Maximum current in charging. When using device < 20 mA.
Product size	22mm×50mm×38mm	With Clip
operating temperature	5 ~ 35 °C	
External terminal	Battery charging terminal	
Frequency of use (GHz)	2.402 ~ 2.480	

### - CAUTION -

Note: This equipment has been tested and found to comply with the limit for a Class B digital device, pursuant to part 15 of the FCC Rules.

These limits are designed to provide reasonable protection against harmful interference in a residential installation. This equipment generates, uses, and can radiate radio frequency energy and, if not installed and used in accordance with the instructions, may cause harmful interference to radio communications. However, there is no guarantee that interference will not occur in a particular installation. If this equipment does cause harmful interference to radio or television reception, which can be determined by turning the equipment off and on, the user is encourage to try to correct the interference by one or more of the following measures:

- Reorient or relocate the receiving antenna.
- Increase the separation between the equipment and receiver.
- Connect the equipment into an outlet on a circuit different from that to which the receiver is connected
- Consult the dealer or an experience radio/TV technician for help

**※ Change or modification not expressly approved by the party responsible for Compliance could void the user's authority to operate the equipment**

#### Caution

Modifications not expressly approved by the party responsible for compliance could void the user's authority to operate the equipment.

FCC Compliance Information : This device complies with Part 15 of the FCC Rules. Operation is subject to the following two conditions: (1) This device may not cause harmful interference, and (2) this device must accept any interference received, including interference that may cause undesired operation.

FCC RF Radiation Exposure Statement:

This equipment complies with FCC RF radiation exposure limits set forth for an uncontrolled environment. This equipment should be installed and operated with a minimum distance of 20 centimeters between the radiator and your body. This transmitter must not be co-located or operating in conjunction with any other antenna or transmitter.

Antenna Type: Chip Antenna

Antenna Gain: 0.5 dBi