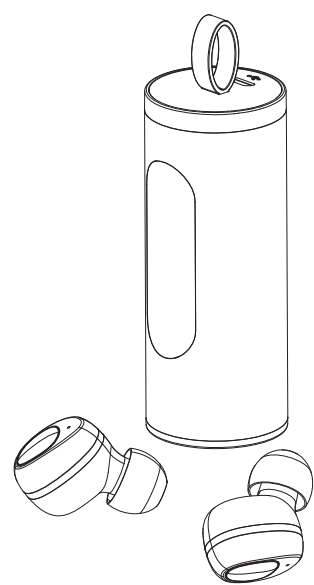
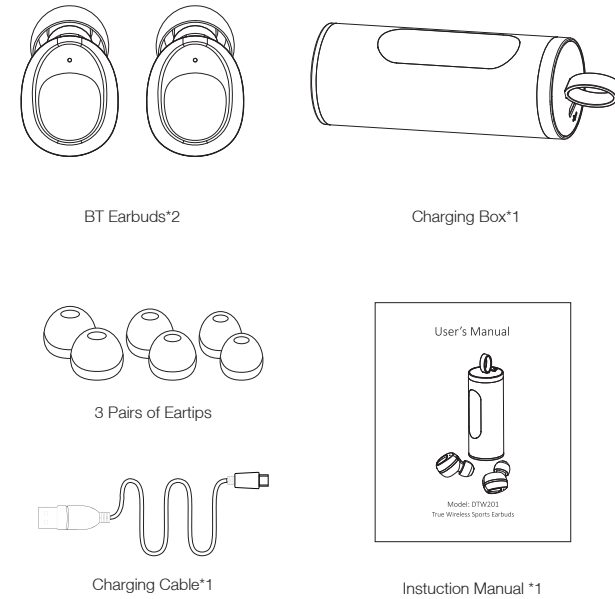


## User's Manual

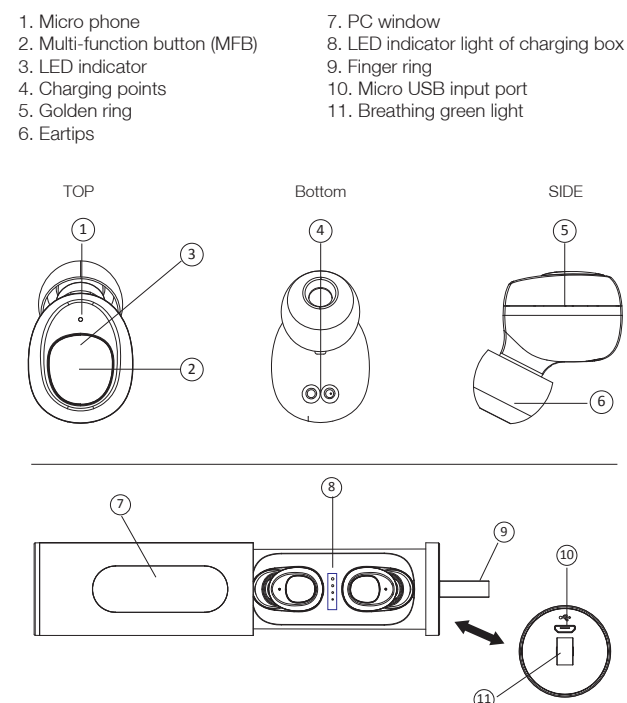


Model: DTW201  
True Wireless Sports Earbuds

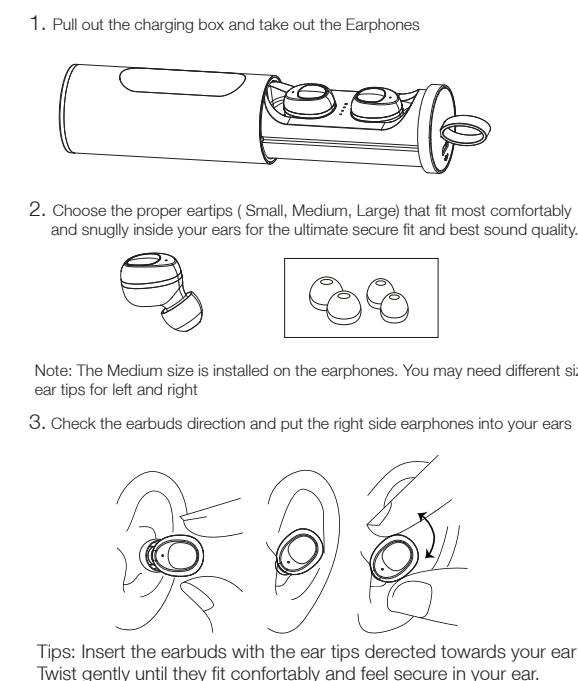
### What is in the packing:



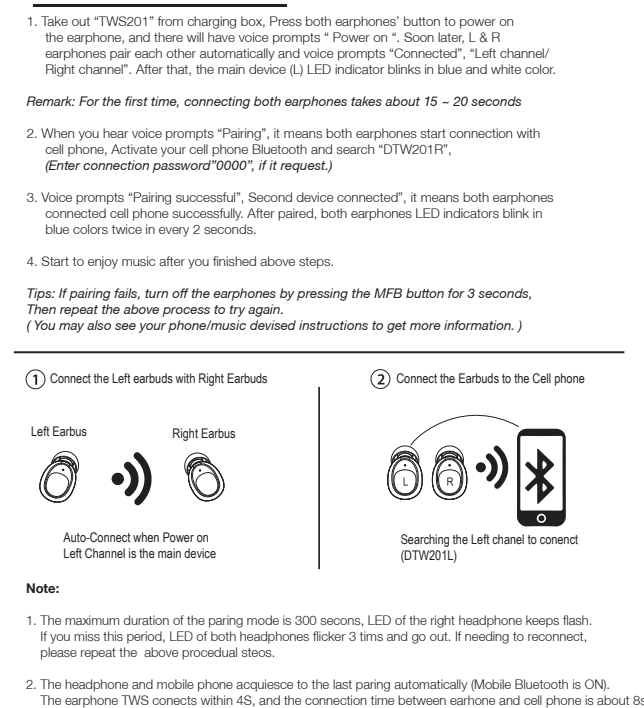
### View Of Product



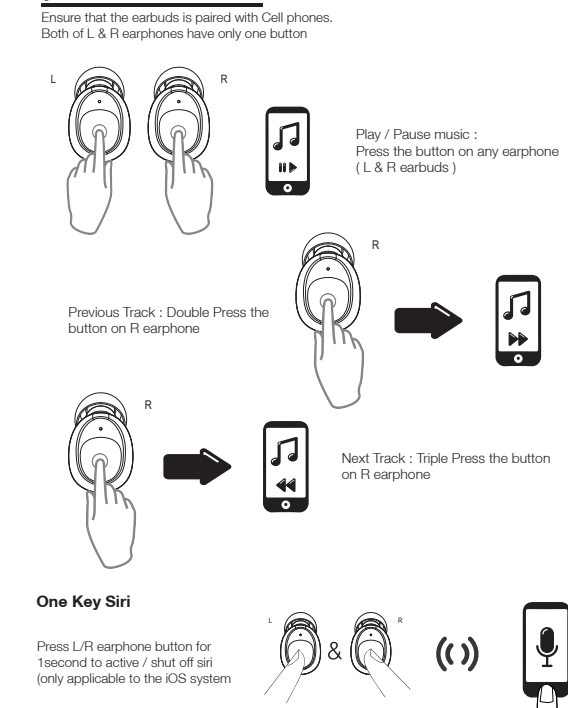
### Wearing Method:



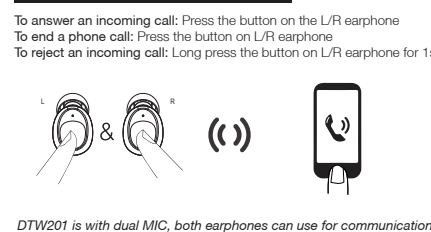
### Connected Devices:



### Playing Music



### Making Phone Calls

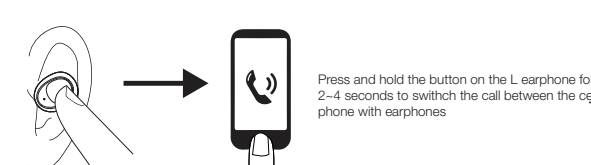


DTW201 is with dual MIC, both earphones can use for communication.  
**Note:** Because part of the cell phone receives calls by default through the phone receiver. Please set up the cell phone answering equipment according to the handset instructions.

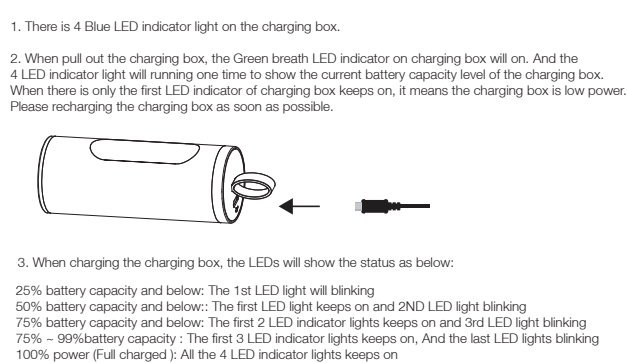
### Three Party Phone Calls Operation

- The phone is on the phone, the other call enters:
1. Click the L/R earphone button to keep the current phone call and answer the call;
2. Press the L/R earphone button for 1s, refusing to answer the call;
3. In three party calls, two phone calls can be switched by pressing the L/R earphone button for 1s.
4. One phone answers, the other keeps in a phone call.
- a. Press the L/R earphone button for 2 second to keep the current call and connect the kept call;
- b. Press the button of the L/R earphone, hang up the current call, and connect the kept call.

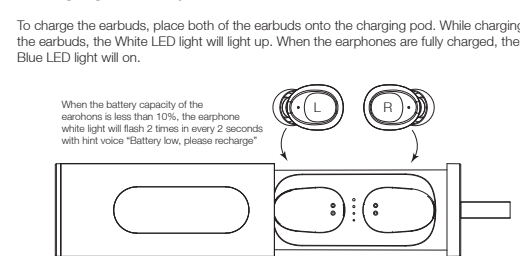
### Transfer the call from earbuds to the cell phone



### Charging the Charging Box



### Charging the Earphone



### Single channel mode

1. Take out any headset as a single side Bluetooth earphone
2. Press and hold the button of the earphone for 6 seconds, the Bluetooth earphone will enter to Bluetooth pairing status. The white and Blue LED light flash alternately repeat.
3. Turn on the mobile Bluetooth function to search the device. When the device name is "DTW201L/R" click it to pair. Then the white indicator light will flash twice every 2 seconds
4. For more functional operations, please refer to the TWS mode.

### Charging and battery information:

1. This products has a built-in non-removable and rechargeable battery. Please use the quipped micro USB cable to charge the battery.
2. The charging current voltage is 5V/1A, and the product cannot be recharged with a charger of more than 5V 1A.
3. Please charge full electricity before the first use. The follow-up charge will take about 1.5 hours each time. The charging box will take about 2 hours to fill up.
4. Please choose the charger that passes the regular manufacturer's safety certification.
5. Repeated charging on the headset will cause battery performance degradation over time, which is a normal phenomenon for all rechargeable batteries.

### Specifications:

General Specifications:	
Bluetooth Chipset:	Airoha AB1526
Bluetooth Version:	V5.0+EDR
Frequency Range:	2.402-2.483Ghz
Support Profiles:	HSP / HFP / A2DP / AVRCP/SPP
Talking Time:	2 hours
Music Playback:	2-3hours
Standby Time:	100h
Transmission Distance:	± 10m / 33ft
Pairing Code:	0000 ( If need )
Pairing Name:	DTW201R
LED:	White, Blue
Antenna	Ceramic antenna
Operation Temperature	-10 - 50°C
Storage Temperature	-20 - 60°C

Earbuds Specification:	
Battery Type	Polymer Lithium
Battery Output Voltage	3.7V
Battery Capacity	50mAh
Full charging time:	1H
Charging Plug/Socket Type:	Thimble

### Specifications:

Charging Box Specification:	
Battery Type	Polymer Lithium
Battery Output Voltage	3.7V
Battery Capacity	400 mA
Full Charging Time:	Up to 2 hours
Earbuds Recharging	Up to 4 charges

Audio Specifications:	
Speaker Size:	6mm
Speaker Sensitivity:	91dB±3dB
Speaker Impedance:	16Ω
Speaker max input Power:	5mW
Speaker frequency Range:	20-20KHZ
Microphone Type:	3.7*2.2*1.1 SMT
Microphone frequency range:	20-20KHZ
Microphone Sensitivity:	-42±3DB

### Warning:

1. Please follow the instructions in this manual.
2. Do not use a charger exceeding the rated current and voltage of the earphone (5V/1A) to charge the earphones, otherwise it will cause damage to the battery of the earphone.
3. Please use and store this product in the ambient temperature environment.
4. Do not use this product near the heat source, such as a radiator, a hot air conditioner, stove, or other instruments that produce heat.
5. Don't block the ports of the earphones, such as charging indicator lights and microphone etc...
6. Please don't adjust the volume to the maximum level for a long time to avoid causing dizziness or damage to hearing.
7. No matter the product is damaged for any reason, it must be dealt within time with the after-sale personnel of us. Any unauthorized demolition and modification will make the warranty invalid.

### Battery warning!

- Caution-The battery used in this device may present a risk of fire or chemical burn if mistreated. Batteries may explode if damaged.
- Do not attempt to open the product or replace the battery. It is built-in and not changeable.
- Use of other batteries may present a risk of fire or explosion and the warranty will be terminated.
- Recharge your battery only with the approved chargers designated for this device.
- Dispose of batteries according to local regulations. Please recycle when possible. Do not dispose as household waste.
- Always store product out of the reach of children.

### Important: Some earbuds cannot be used while charging

### Charging Box Warning!

- Please make sure that use standard cable with appropriate specification or it may lead to charging pod damage.
- Please confirm the voltage of the electric device is 5V before charging it.
- Do not drop, knock, disassemble or attempt to repair the charging pod by yourself.
- Do not put the charging pod in water or damp place.
- Do not expose or put the charging pod near to heat sources of flammable place.
- Do not leave the charging pod in car because of strong sunlight and high temperature will lead to product damage.
- Keep the charging pod away from children.

NOTE: This equipment has been tested and found to comply with the limits for a Class B digital device, pursuant to part 15 of the FCC Rules. These limits are designed to provide reasonable protection against harmful interference in a residential installation. This equipment generates uses and can radiate radio frequency energy and, if not installed and used in accordance with the instructions, may cause harmful interference to radio communications. However, there is no guarantee that interference will not occur in a particular installation. If this equipment does cause harmful interference to radio or television reception, which can be determined by turning the equipment off and on, the user is encouraged to try to correct the interference by one or more of the following measures:

- Reorient or relocate the receiving antenna.
- Increase the separation between the equipment and receiver.
- Connect the equipment into an outlet on a circuit different from that to which the receiver is connected.
- Consult the dealer or an experienced radio/TV technician for help

Changes or modifications not expressly approved by the party responsible for compliance could void the user's authority to operate the equipment. This device complies with Part 15 of the FCC Rules. Operation is subject to the following two conditions:

- (1) this device may not cause harmful interference, and
- (2) this device must accept any interference received, including interference that may cause undesired operation.