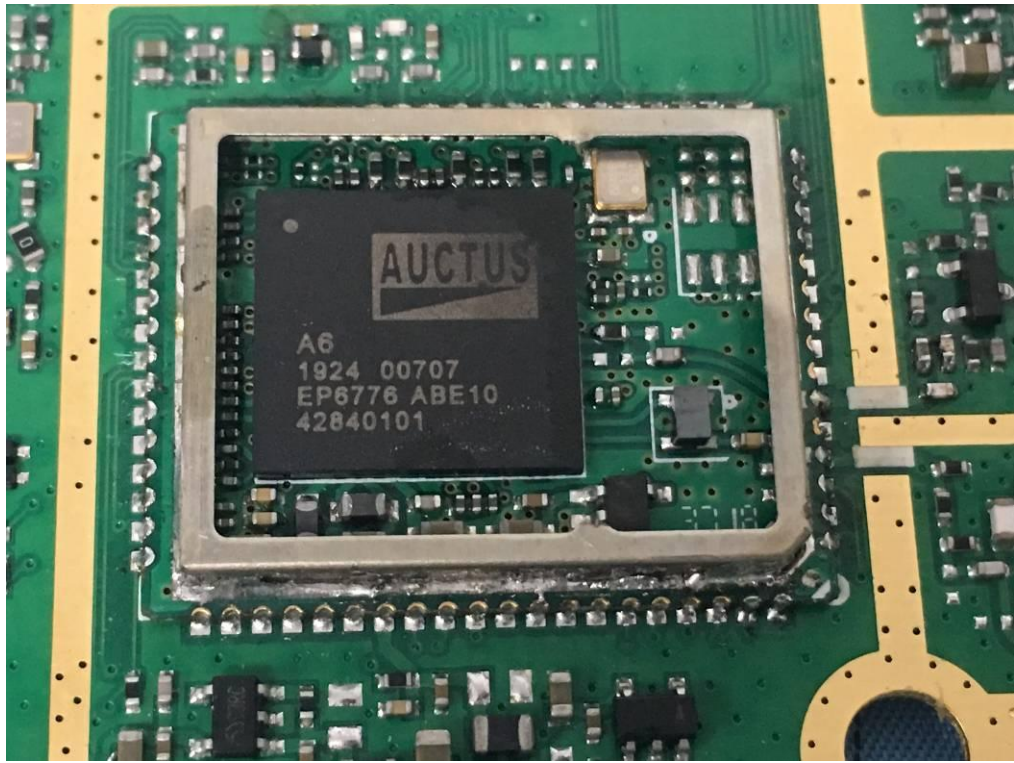
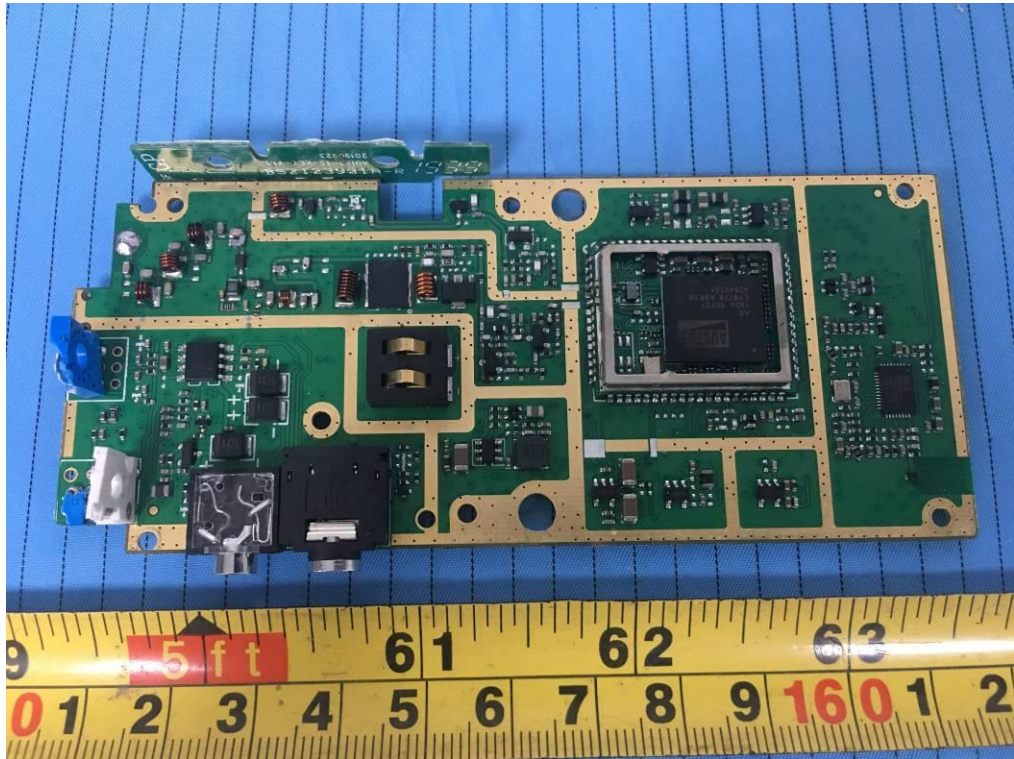


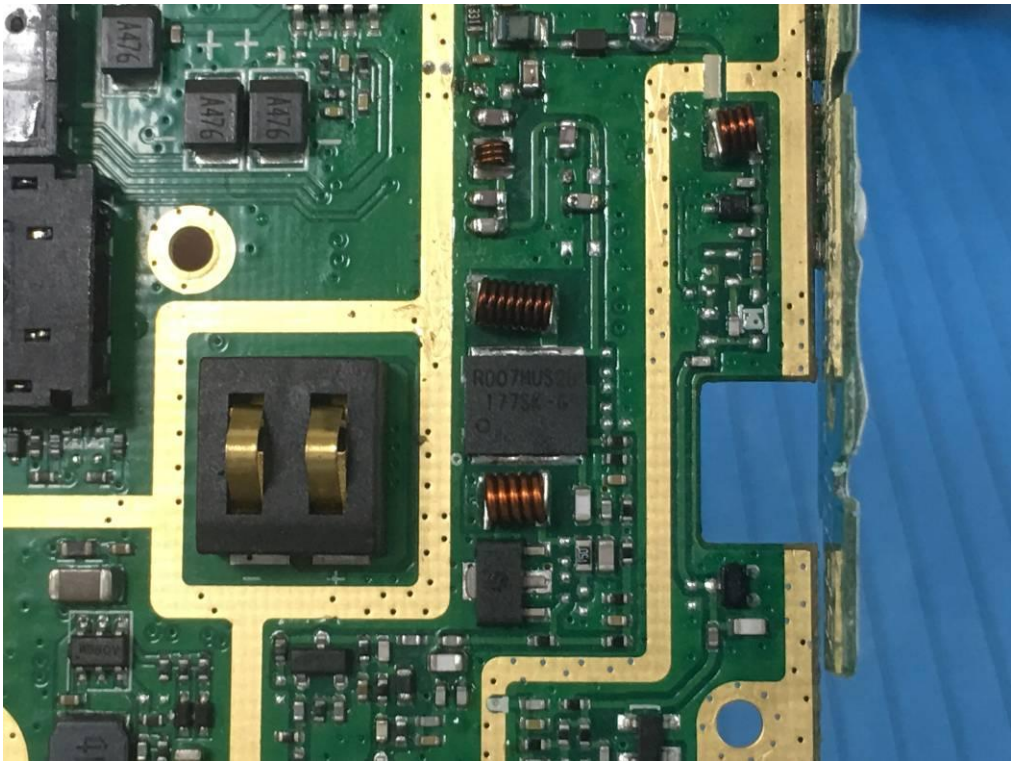
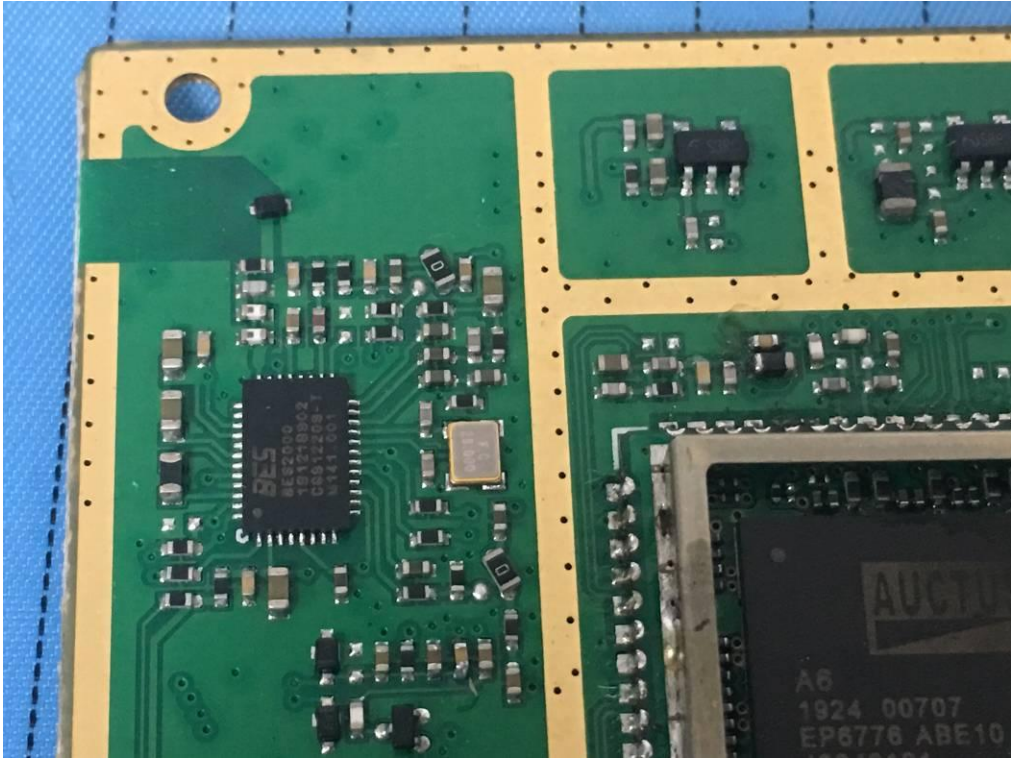
# EXHIBIT C - EUT INTERNAL PHOTOGRAPHS

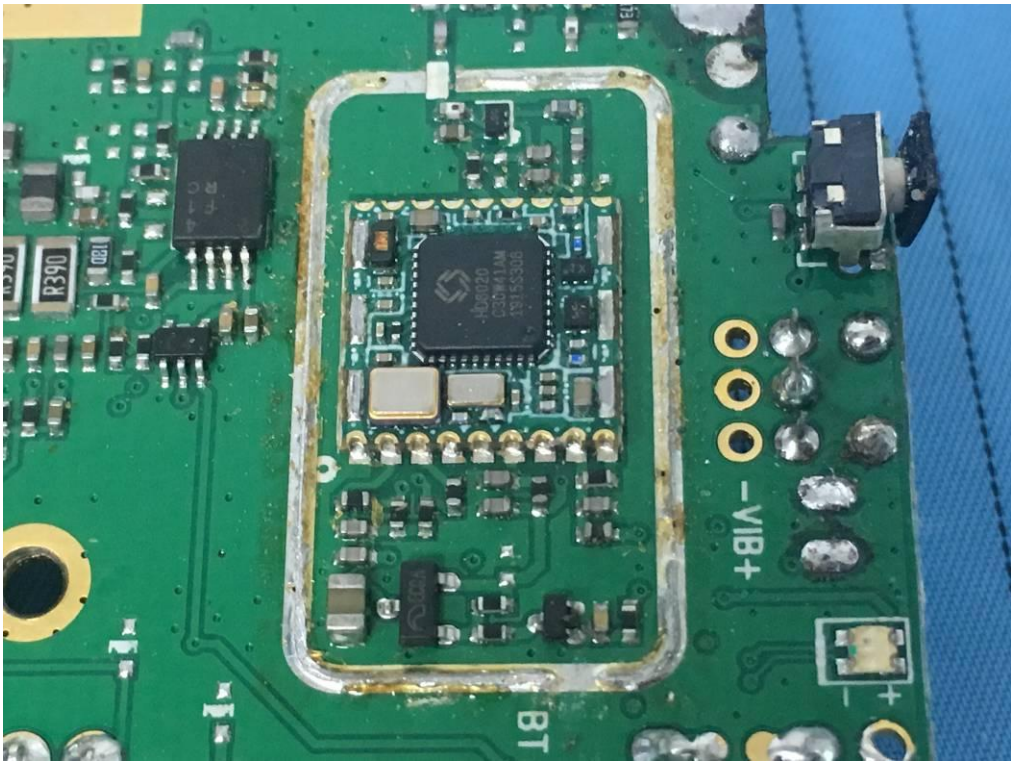
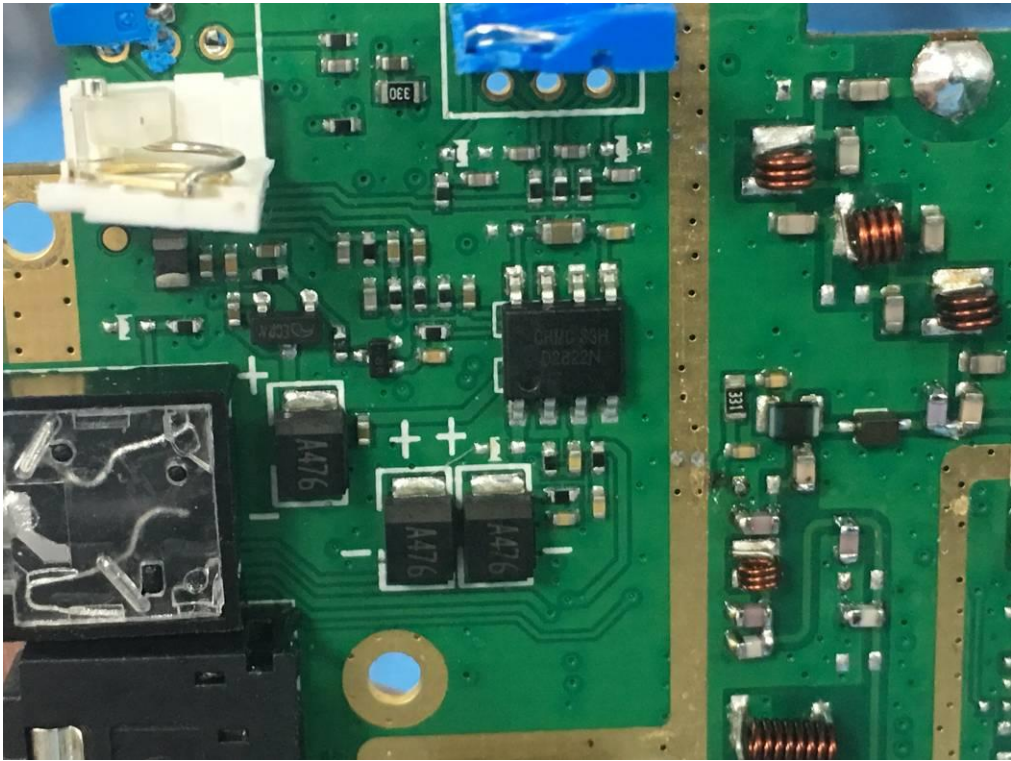


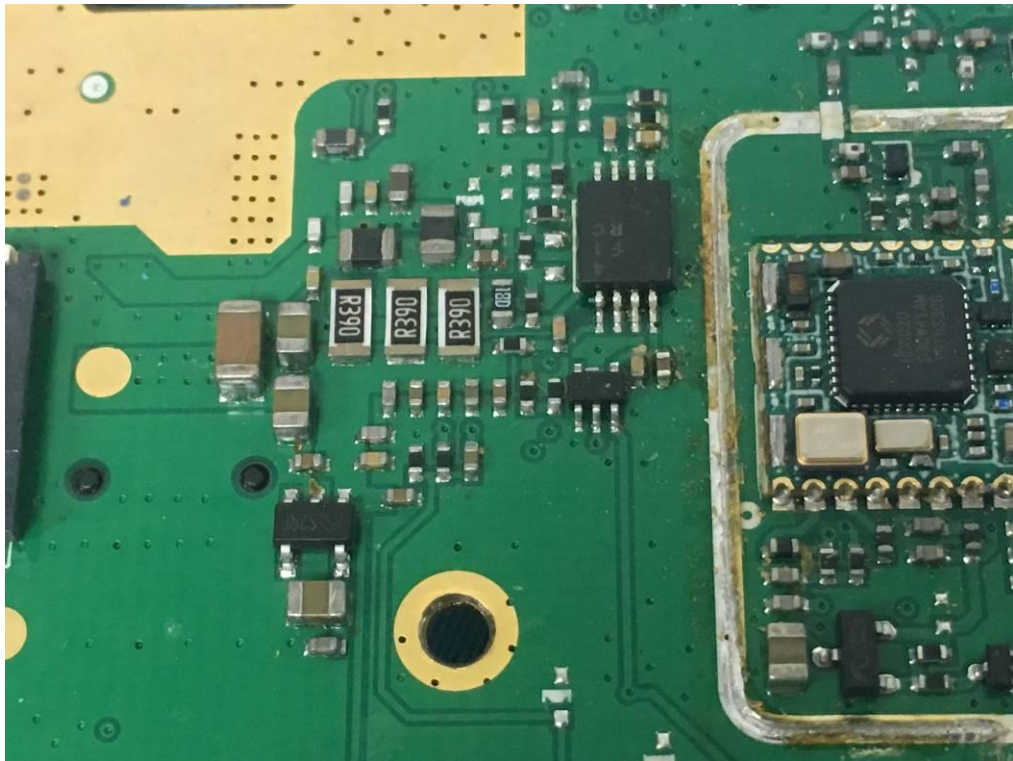


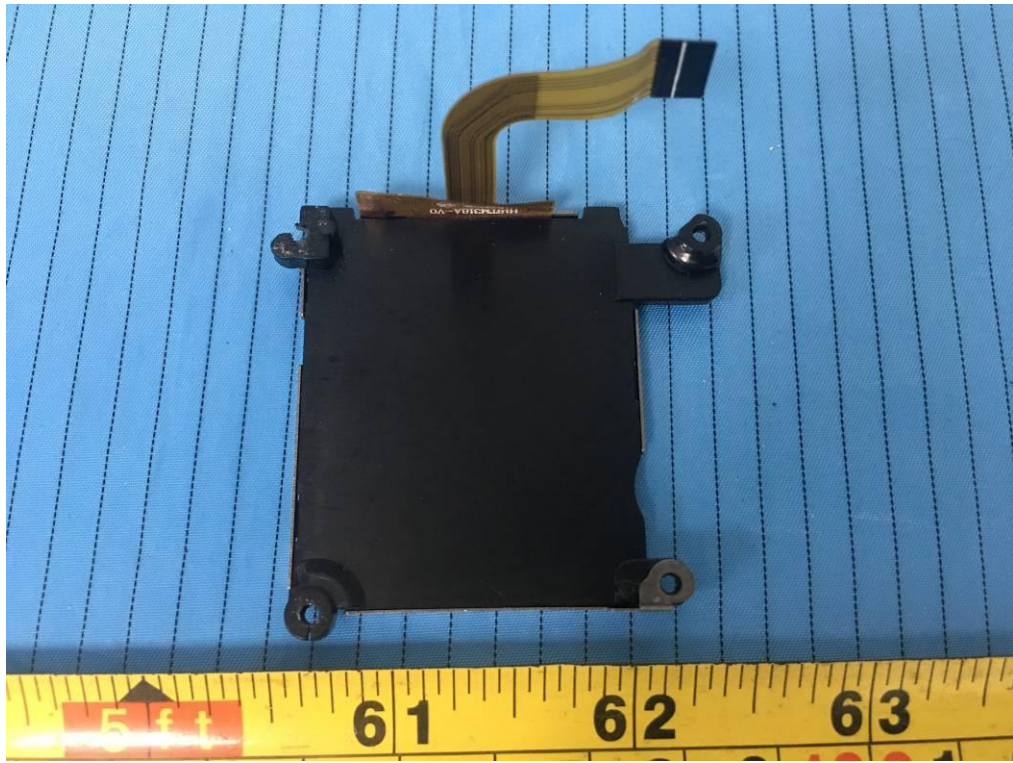
















Rechargeable Li-Ion Battery 21CP5/40/86  
Model:AABL2000-153DC Spec.:7.4V/2000mAh  
/14.8Wh Limited Charging Voltage:8.4V   
Caution: Do not short circuit, do not  
expose the battery to high temperature,  
do not put batteries in fire or water. Use specified  
charger only. Refer to provided user manual.  
Refer to the provided user manual Recycled or  
disposed of properly. Date: 2020-06

Li-ion  
Made In China  
Dongguan SYO Electronic Technology Co., Ltd