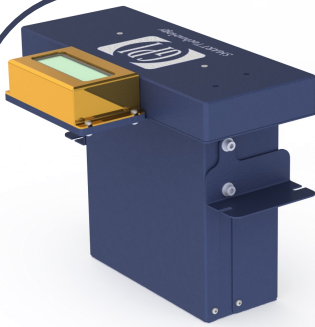




QUICK INSTALLATION GUIDE

CONTENT OF THE BOX



Display position kit



- Product Sheet
- QC Document
- Quick Installation Guide

The box is designed to contain 2 SMART Check Point units. In this case, all the elements are doubled.

Changes / modifications not approved by the responsible party could void the user's authority to operate the equipment.

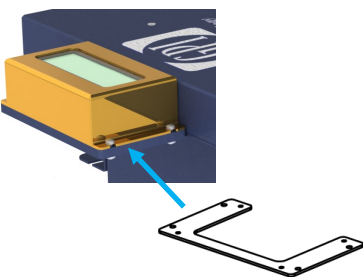
NOTE: This equipment has been tested and found to comply with the limits for a Class B digital device, pursuant to part 15 of the FCC Rules. These limits are designed to provide reasonable protection against harmful interference in a residential installation. This equipment generates, uses and can radiate radio frequency energy and, if not in-stalled and used in accordance with the instructions, may cause harmful interference to radio communications. However, there is no guarantee that interference will not occur in a particular installation. If this equipment does cause harmful interference to radio or television reception, which can be determined by turning the equipment off and on, the user is encouraged to try to correct the interference by one or more of the following measures:

- Reorient or relocate the receiving antenna.
- Increase the separation between the equipment and receiver.
- Connect the equipment into an outlet on a circuit different from that to which the receiver is connected.
- Consult the dealer or an experienced radio/ TV technician for help.



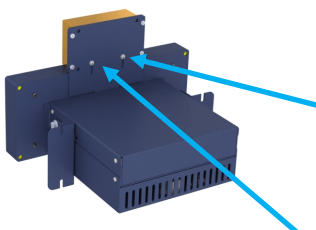
QUICK INSTALLATION GUIDE

DISPLAY ADAPTATION



① Vertical adjustment

2 U shape elements can be added or removed to adjust the height of the display by 1.5 or 3 mm. When removed, the display has the same height as the antenna.



② Horizontal adjustment

With these 2 screws, the display can be moved forward and backwards up to 15mm when installing the device





QUICK INSTALLATION GUIDE

GENERAL INSTALLATION



- ① Remove the elements from the box
- ② Place the Check point into the gaming table using the brackets (a) for adjustment
- ③ Plug the Ethernet cord into the back of the Check Point (b)
- ④ Plug (c) into the Check Point
- ⑤ Plug the power cord into (d). The device starts automatically

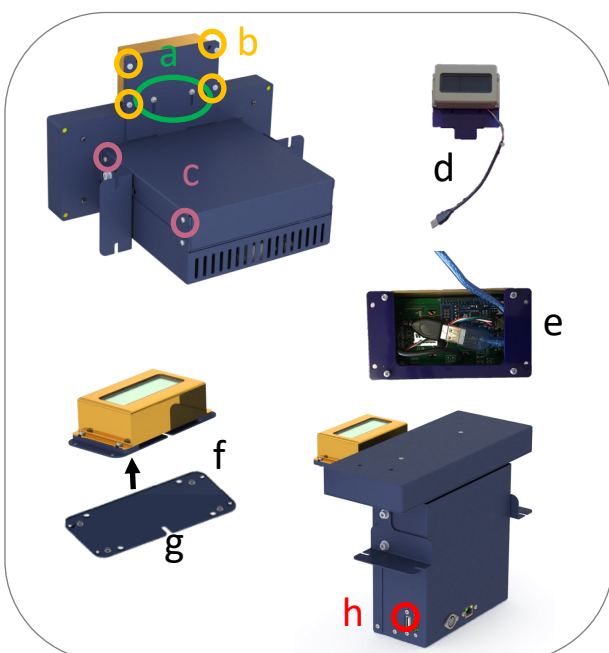


This device complies with part 15 of the FCC Rules. Operation is subject to the following two conditions: (1) This device may not cause harmful interference, and (2) this device must accept any interference received, including interference that may cause undesired operation.



QUICK INSTALLATION GUIDE

SATELLITE DISPLAY INSTALL



Possibility to place the display as a satellite dissociated from the main unit

Steps to follow:

- ① Remove the 2 screws (a) to remove the metal piece from the main unit
- ② Remove the 4 screws (b) to remove the display from the blue plaque
- ③ Remove the 4 screws (c) to remove the lid and unplug the USB cable before replacing the lid. The display is now a satellite as shown in (d).
- ④ Connect the blue USB cord as shown in (e) and then place the blue option plate (f) to close the display unit, letting the cable come out the hole (g)
- ④ Connect the blue USB cable to the external USB port (h).



This device complies with part 15 of the FCC Rules. Operation is subject to the following two conditions: (1) This device may not cause harmful interference, and (2) this device must accept any interference received, including interference that may cause undesired operation.