

PCB ANTENNA

Gain, efficiency:

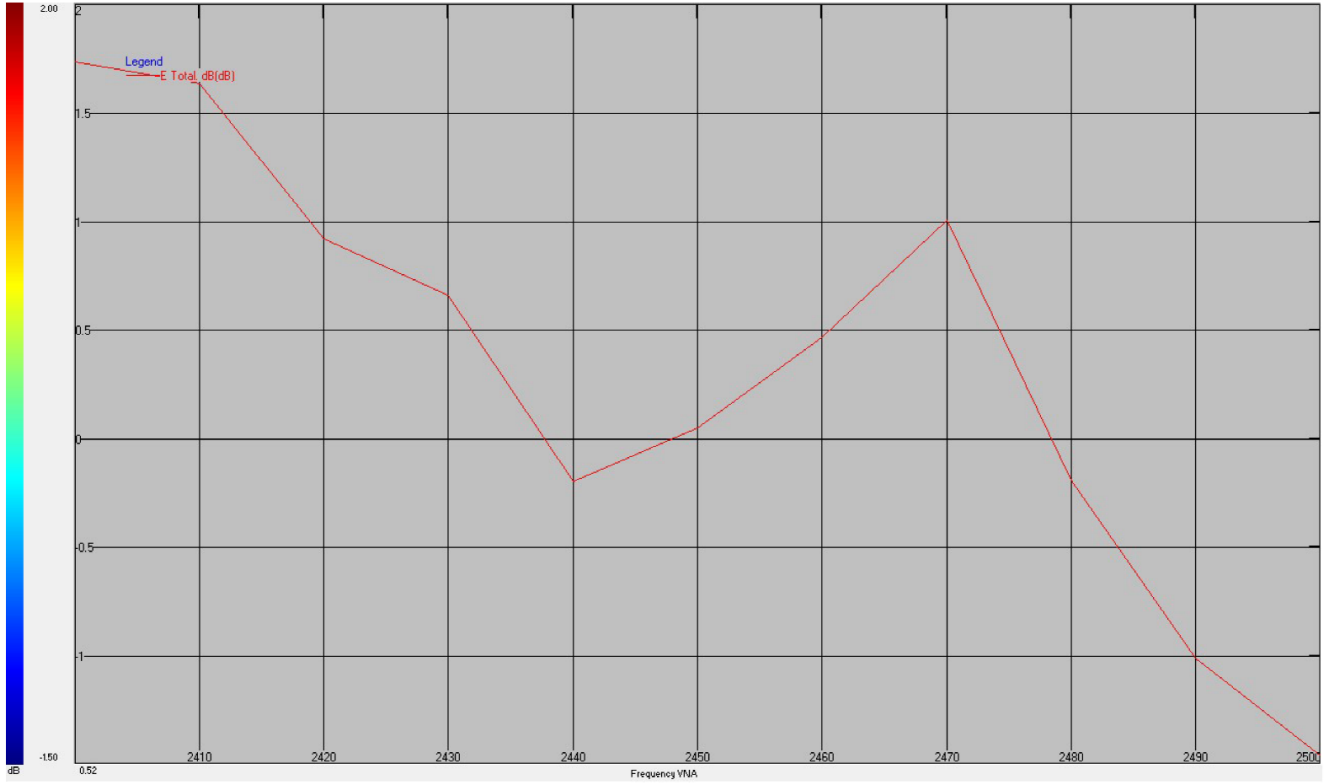
频率 frequency	天线增益 (dBi) antenna gain	效率 efficiency
2400MHz	1.74	26.71%
2410MHz	1.64	28.80%
2420MHz	0.92	25.43%
2430MHz	0.66	22.29%
2440MHz	-0.19	18.31%
2450MHz	0.05	20.58%
2460MHz	0.47	24.64%
2470MHz	1.01	25.20%
2480MHz	-0.19	20.57%
2490MHz	-1.01	19.25%
2500MHz	-1.46	17.19%

4.2 Echo loss

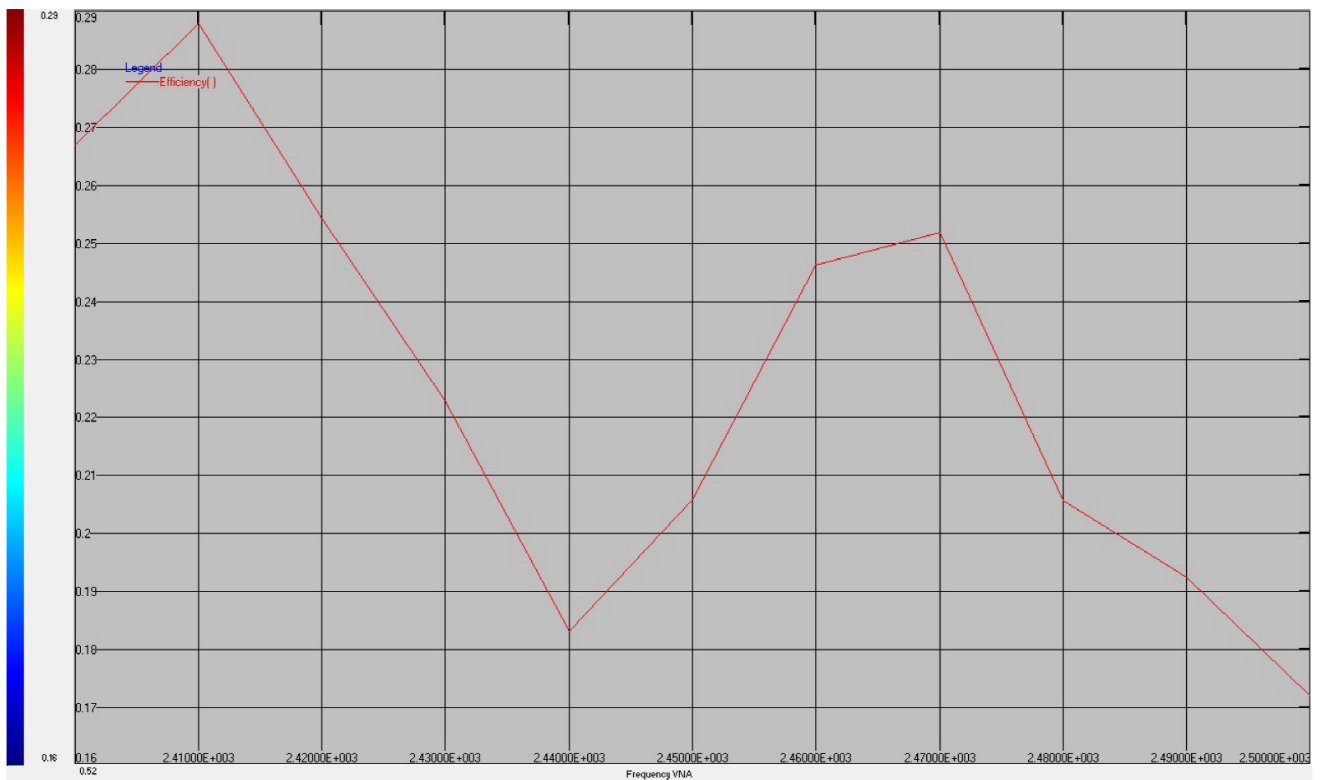
频率 frequency	电压驻波比 voltage standing wave ratio
2400MHz	-7.23
2450MHz	-5.67
2500MHz	-4.22

4.3 Antenna radiation test diagram

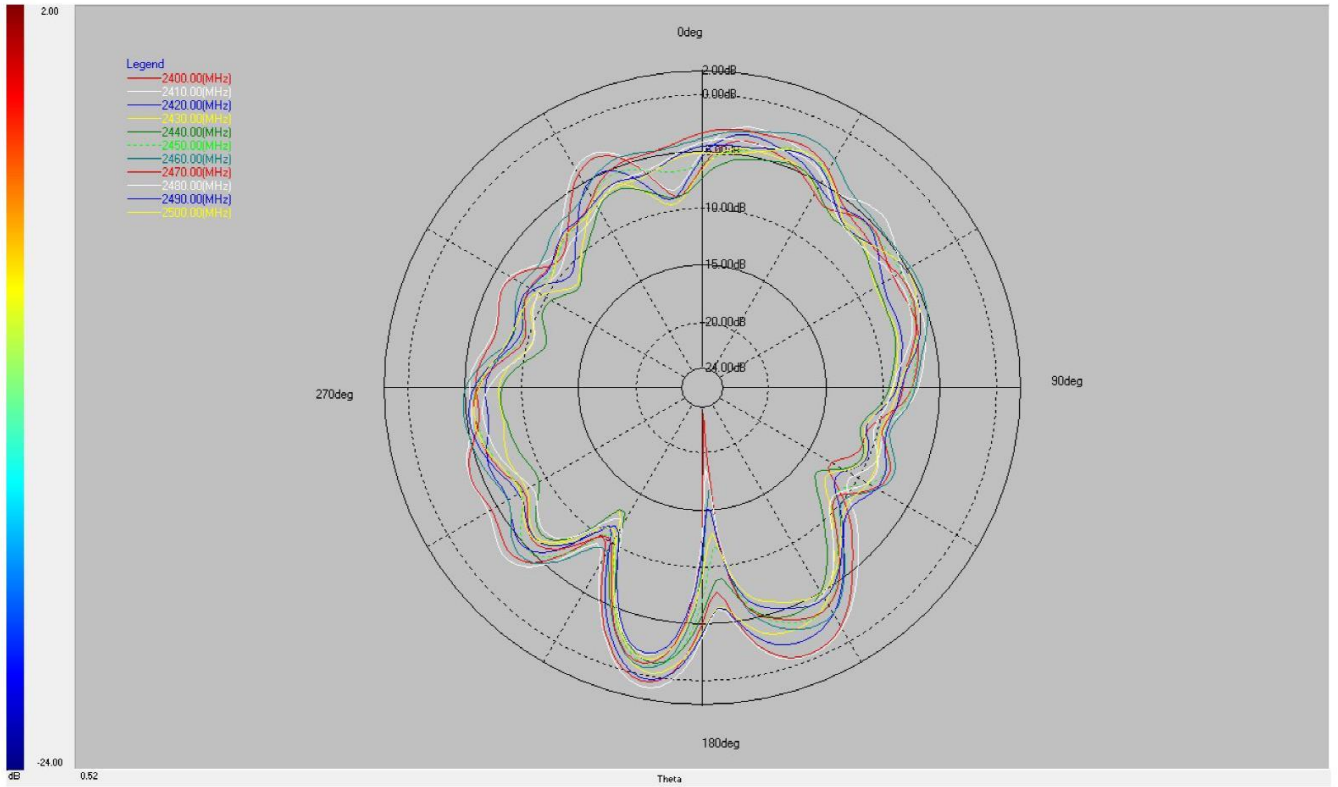
a) Gain



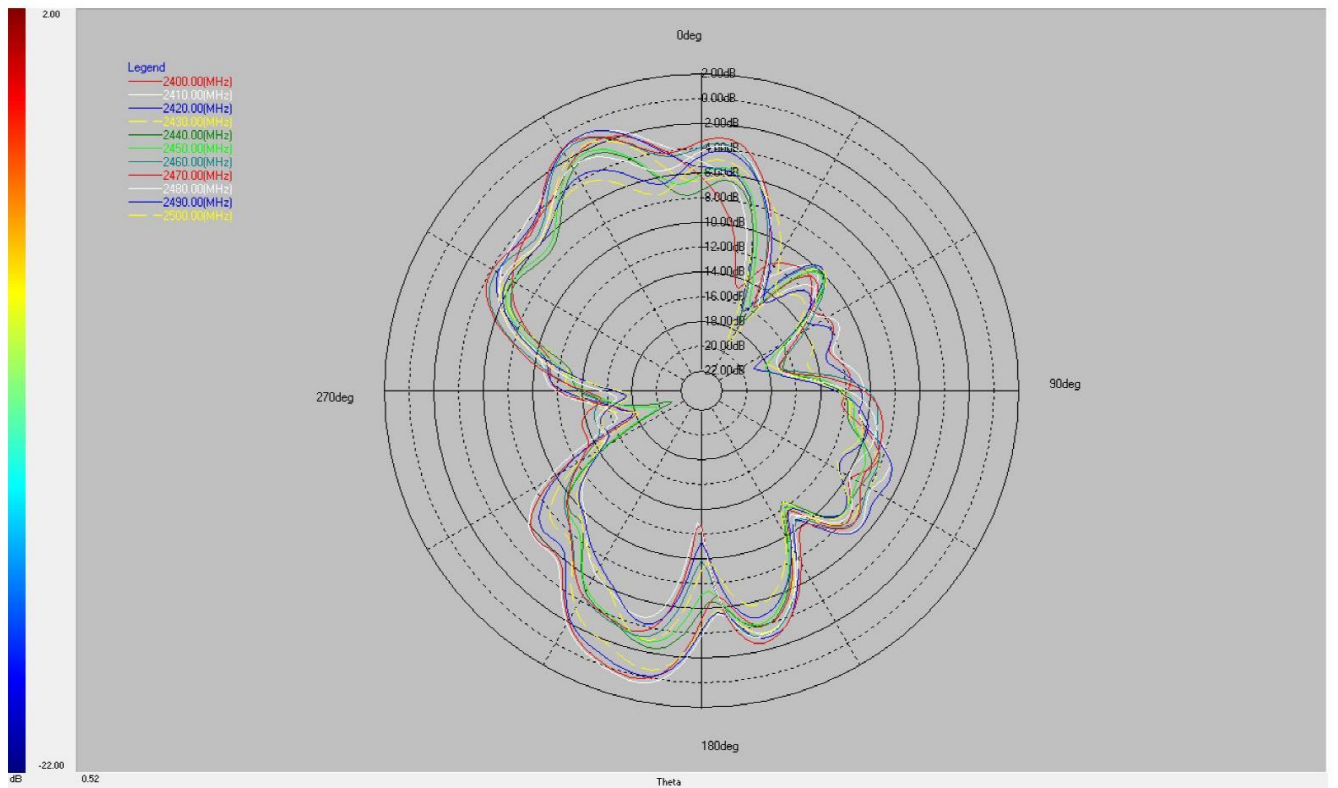
b) Efficiency



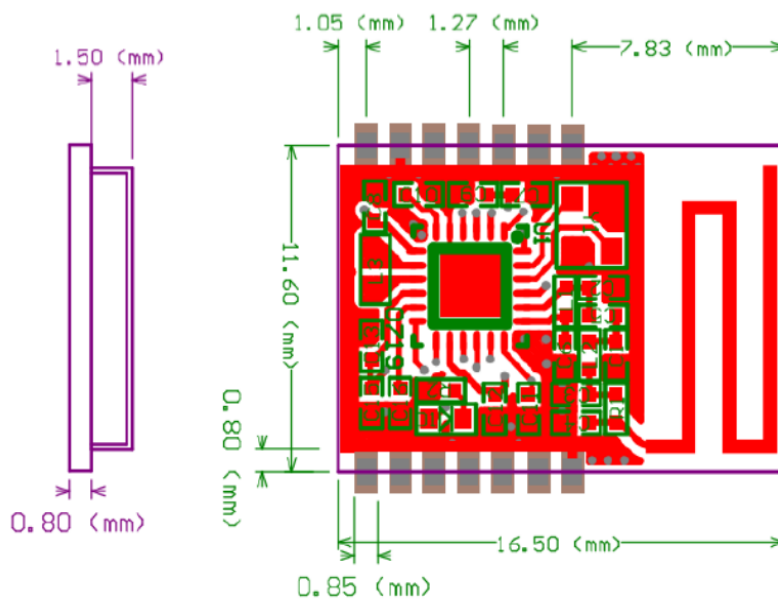
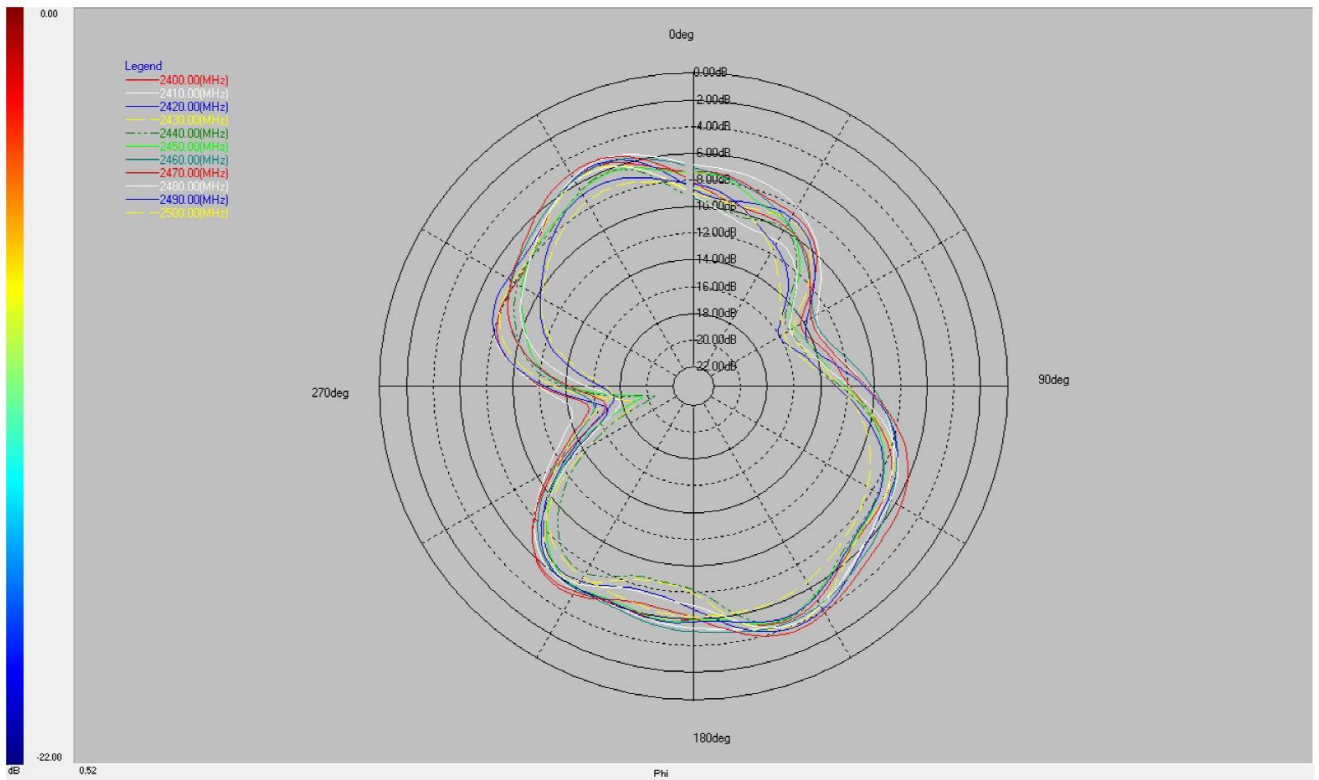
c) $\Phi=0$



d) $\Phi=90$



e) Theta=90 度





深圳联客智能科技有限公司

SHENZHEN LINKIING TECHNOLOGY CO., LTD

深圳市南山区松白路 1055 号丽河工业园 5 栋 2 楼

夏工

2nd Floor, Building 5, Lihe Industrial

Zone, No. 1055 Songbai Road, Nanshan

District, Shenzhen

13510925951

www.linkiing.com