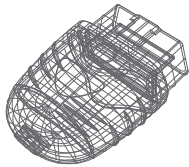


AUTOPHIX 3210

Operation Guidance



Wireless+OBDII

Special Note

1. Download & install the APP
Method 1:
For IOS: Search "OBDMate" in the App Store and install it.
For Android: Search "OBDMate" in the Google Play and install it.



EN - 1

Method 2: Scan the QR code to download the "OBDMate" APP.



2. Connect the 3210 to the vehicle
Operate with car key
Turn the key to 'ON' position or start the vehicle, then connect the 3210 to the vehicle by plugging it into the OBD2 port.
Operate without car key
Method 1: Press the start button (do not step on the brakes). Then press again to power up the dashboard, and then plug the 3210 into the OBD2 port.
Method 2: Step on the brakes, press the start button to start the vehicle, and plug the 3210 into the OBD2 port.

Plug 3210 into the diagnostic link connector(DLC).

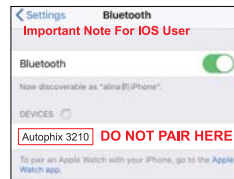
EN - 2

The DLC is usually found on the driver's side, under dash. On different vehicles the location of DLC may be different, please refer to the following possible locations:
3. Connect the 3210 to your device
For IOS: Please open Bluetooth via the Control Center and then open "OBDMate" APP to connect the 3210.



EN - 3

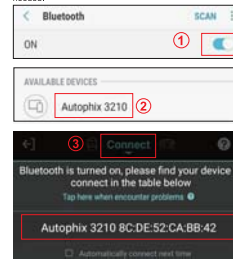
Warm reminder: Please **DO NOT** connect the Autophix 3210 in the phone system settings.



For Android user, please turn on the Bluetooth and connect the Autophix 3210 in the phone system settings. Then use the "OBDMate" APP to connect the Autophix 3210.

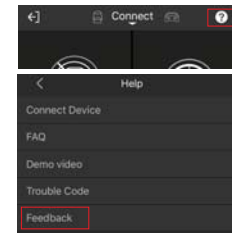
EN - 4

Warm reminder: Please enter password "0000" or "1234" if needed.



EN - 5

4. Using Help
If you have any problems during use, please feel free to contact us by clicking the "?" button or simply email to support@autophix.com



EN - 6

AUTOPHIX TECH CO.,LTD
Floor4, Building2, Jimicheng Industry park,
Longhua District, Shenzhen, China
Phone: 0755-8528-1258
E-mail: support@autophix.com
Website: www.autophix.com
CE FC RoHS
MADE IN CHINA

FCC Statement

This equipment has been tested and found to comply with the limits for a Class B digital device, pursuant to part 15 of the FCC rules. These limits are designed to provide reasonable protection against harmful interference in a residential installation. This equipment generates, uses and can radiate radio frequency energy and, if not installed and used in accordance with the instructions, may cause harmful interference to radio communications. However, there is no guarantee that interference will not occur in a particular installation. If this equipment does cause harmful interference to radio or television reception, which can be determined by turning the equipment off and on, the user is encouraged to try to correct the interference by one or more of the following measures:

- Reorient or relocate the receiving antenna.
- Increase the separation between the equipment and receiver.
- Connect the equipment into an outlet on a circuit different from that to which the receiver is connected.
- Consult the dealer or an experienced radio/TV technician for help.

To assure continued compliance, any changes or modifications not expressly approved by the party.

Responsible for compliance could void the user's authority to operate this equipment. (Example- use only shielded interface cables when connecting to computer or peripheral devices).

This equipment complies with Part 15 of the FCC Rules. Operation is subject to the following two conditions:

- (1) This device may not cause harmful interference, and
- (2) This device must accept any interference received, including interference that may cause undesired operation.

FCC Radiation Exposure Statement:

The equipment complies with FCC Radiation exposure limits set forth for uncontrolled environment. This equipment should be installed and operated with minimum distance 20cm between the radiator and your body.

.