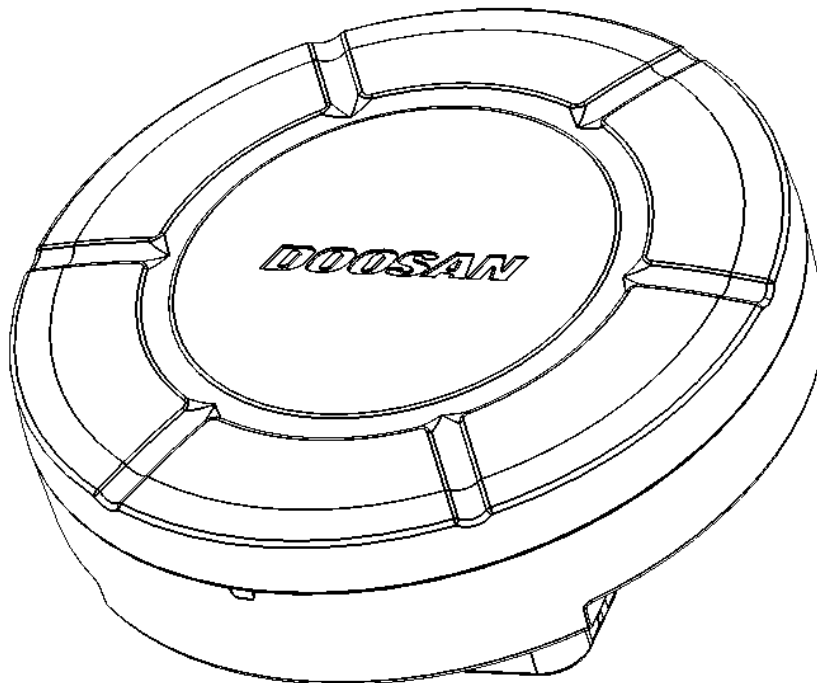


DTM-02W

USER'S GUIDE

(Telematics management Terminal)





Revision History

Revision	Issue Date	Author	Scope
1.0	2019/08/14	Lim.J.H	Initial Release



Contents

1	WARNINGS FOR SAFETY OPERATION	5
2	INTRODUCTION	9
3	OVERVIEW	10
3.1	Components	10
3.3	Features	11
4	HARDWARE DESCRIPTIONS	12
4.1	DTM-02W.....	12
4.1.1	I/O Connector.....	13
4.1.2	Status LED	15
5	HOW TO USE	16
5.1	User Registration	16
5.2	WIFI Mode Operation.....	16
6	SPECIFICATIONS.....	17
6.1	DTM-02W.....	17
7	LIMITED WARRANTY	18



Figure

FIGURE 1 LIN-Q SYSTEM	9
FIGURE 2 DTM-02W TERMINAL	10
FIGURE 3 DTM-02W TERMINAL	12
FIGURE 4 I/O CONNECTOR	13
FIGURE 5 STATUS LED	15

Table

TABLE 1 DESCRIPTIONS FOR EACH PARTS OF DTM-01	12
TABLE 2 PIN DESCRIPTIONS FOR I/O CONNECTOR.....	14
TABLE 3 STATUS LED	15
TABLE 4 DTM-02W SPECIFICATIONS.....	17

1 Warnings for safety operation

This is to protect your safety and property. Please read this manual carefully before using.

■ Operational Environment

- The operating voltage of this products is between 9Vdc and 34Vdc. Please use the specified operating volgage.
- Use within the specified temperature range.
- This product is specialized for industrial vehicles.

■ Insallation Precaustions

- Insallation and wiring require professional skills. Be sure to install it with the help of a propessional. Incorrect insallation and wiring can cuase the fire or malfuncation.
- When installing the product, install it so that it does not inferfere with the operation of safety devices such as airbags and brake levers...etc.
- Insall in a location free from moisture. It may cuase damage or accidents if it is installed in places where water or rain is splashed or dusty.
- When wiring, be sure to check the position of pipes, tanks, electric wiring, etc., and pay special attention to avoid interference or contact.
- Use specified cables and components.
- Be careful not to fall down when installing in a place where the ceiling and vibration of the vehicle are severe.
- Do not block the vent or heat sink. It may cause the fire.
- Protect the wire tube by winding the insulation tape around the area where the wire is in contact with the metal part. It can cause the fire or electric shock.

■ Important Safety Precautions

- Do not operate the device by manually during the vehicle operation. It can cuase the accidents.
- Any modification of this product is prohibited and will void your warranty. Any use of the product or its components for purposes not expressly authorized by this document is prohibited and will void your warranty.
- Allow only authorized personnel to service the unit. Unauthorized service can invalidate the warranty.



This device complies with part 15 of the FCC Rules.

Operation is subject to the following two conditions:

1. This device may not cause harmful interference, and
2. This device must accept any interference received, including interference that may cause undesired operation.

FCC Part 15.105(b) Warning Statement

This equipment has been tested and found to comply with the limits for a Class B digital device, pursuant to part 15 of the FCC Rules. These limits are designed to provide reasonable protection against harmful interference in a residential installation. This equipment generates uses and can radiate radio frequency energy and, if not installed and used in accordance with the instructions, may cause harmful interference to radio communications. However, there is no guarantee that interference will not occur in a particular installation. If this equipment does cause harmful interference to radio or television reception, which can be determined by turning the equipment off and on, the user is encouraged to try to correct the interference by one or more of the following measures:

- Reorient or relocate the receiving antenna.
- Increase the separation between the equipment and receiver.
- Connect the equipment into an outlet on a circuit different from that to which the receiver is connected.
- Consult the dealer or an experienced radio/TV technician for help.

NOTE: THE HOIMYUNG ICT CORPORATION IS NOT RESPONSIBLE FOR ANY CHANGES OR MODIFICATIONS NOT EXPRESSLY APPROVED BY THE PARTY RESPONSIBLE FOR COMPLIANCE. SUCH MODIFICATIONS COULD VOID THE USER'S AUTHORITY TO OPERATE THE EQUIPMENT.



WARNING & SAFETY INFORMATION

The antenna(s) used for this device must be installed to provide a separation distance of at least 20cm from all persons and must not be co-located or operating in conjunction with any other antenna or transmitter.

**CAUTION
RISK OF EXPLOSION IF BATTERY IS REPLACED
BY AN INCORRECT TYPE.
DISPOSE OF USED BATTERIES ACCORDING
TO THE INSTRUCTIONS**

IC Information

This device complies with Industry Canada's license-exempt RSSs. Operation is subject to the following two conditions:

- (1) This device may not cause interference; and
- (2) This device must accept any interference, including interference that may cause undesired operation of the device.”

Le présent appareil est conforme aux CNR d'Industrie Canada applicables aux appareils radio exempts de licence. L'exploitation est autorisée aux deux conditions suivantes : (1) l'appareil ne doit pas produire de brouillage, et (2) l'utilisateur de l'appareil doit accepter tout brouillage radioélectrique subi, même si le brouillage est susceptible d'en compromettre le fonctionnement.

Cet équipement doit être installé et utilisé avec un minimum de 20 cm de distance entre la source de rayonnement et votre corps.

English:

*“This device complies with Industry Canada's license-exempt RSSs. Operation is subject to the following two conditions:
(1) This device may not cause interference; and*



(2) This device must accept any interference, including interference that may cause undesired operation of the device.”

French:

« Le présent appareil est conforme aux CNR d'Industrie Canada applicables aux appareils radio exempts de licence. L'exploitation est autorisée aux deux conditions suivantes : (1) l'appareil ne doit pas produire de brouillage, et (2) l'utilisateur de l'appareil doit accepter tout brouillage radioélectrique subi, même si le brouillage est susceptible d'en compromettre le fonctionnement. »

2 Introduction

The DTM-02W is a product to the Doosan Lin-Q system. This product is an IoT(Internet of Things) terminal that can be used anywhere in the world by using LTE communication networks or WIFI communication networks.

User can access the Lin-Q system and this product after registration in on the Lin-Q homepage or by contacting the administrator.

Below is the Lin-Q system diagram.

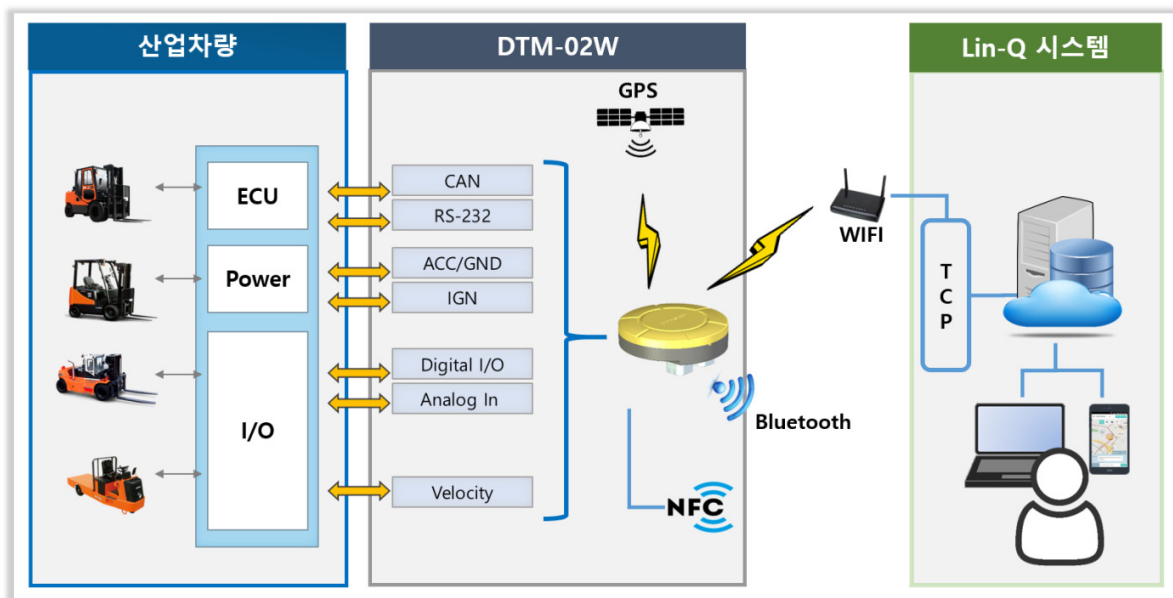


Figure 1 Lin-Q System

3 Overview

3.1 Components

DTM-02W is composed of the following components. It is required that separate harness cable assembly for the connection with the vehicle.

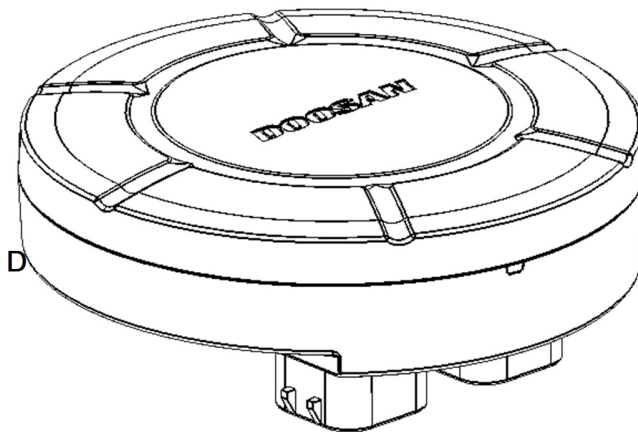


Figure 2 DTM-02W Terminal



3.3 Features

- WIFI communication
- Optimized functions for industrial vehicles
- CAN data collection function
- Various sensor data collection function of vehicle
- Periodic transmission function for collected data
- Non periodic event data transfer function
- Shock detection function
- Firmware over the air function.
- Remote limitation function (will be updated)
 - ✓ Speed limitation / Driver limitation / Torque limitation / RPM limitation
- Various I/O ports
 - ✓ 2 Digital Input
 - ✓ 3 Digital In/Output
 - ✓ 1 Analog Input
 - ✓ CAN
 - ✓ UART 2Port

4 Hardware Descriptions

4.1 DTM-02W

The name of each part of the terminal is as follows.

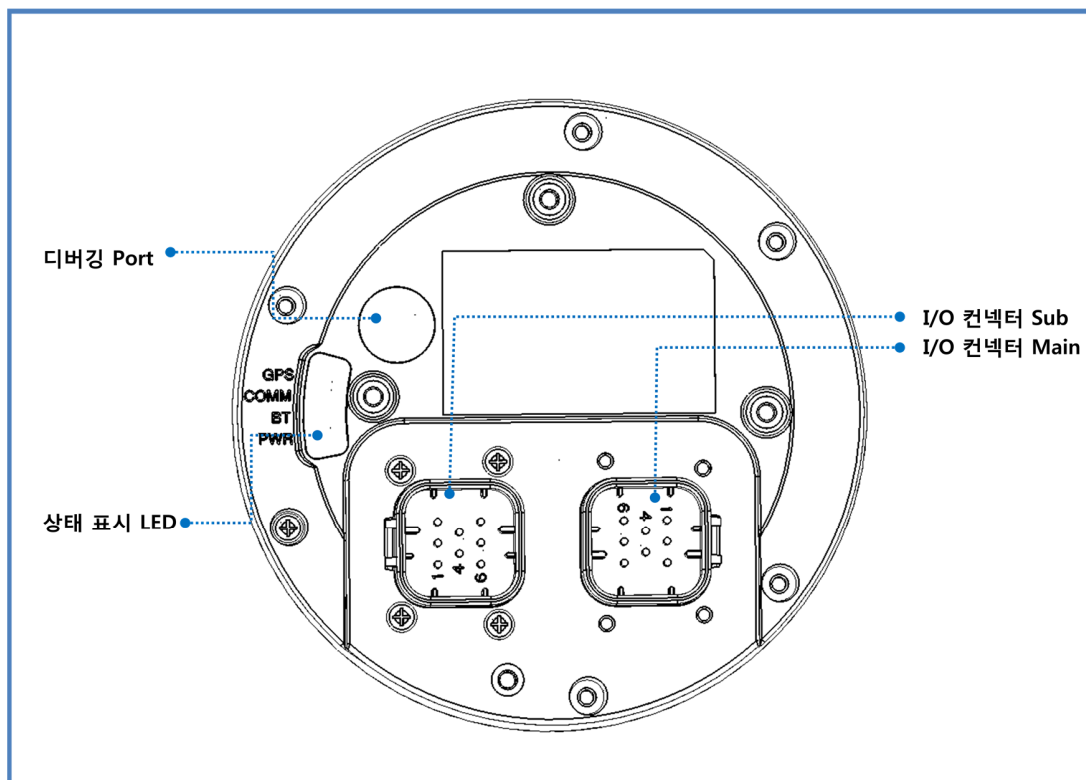


Figure 3 DTM-02W Terminal

The following table shows the specifications of each parts.

Parts	Functions	Description
I/O Connector Main	Connector that connect with vehicle	8 pin, Black
I/O Connector Sub	Connector that connect with vehicle	8 pin, Natural
Status LED	Represent the terminal status	4 LEDs
Debug Port	Develop debug Port	

Table 1 Descriptions for each parts of DTM-01

Detailed descriptions for each parts are as follows.

4.1.1 I/O Connector

The I/O connector is connected to the vehicle via harness cable and consists of 8+8 pins. The shape of the connector is shown in the below figure.

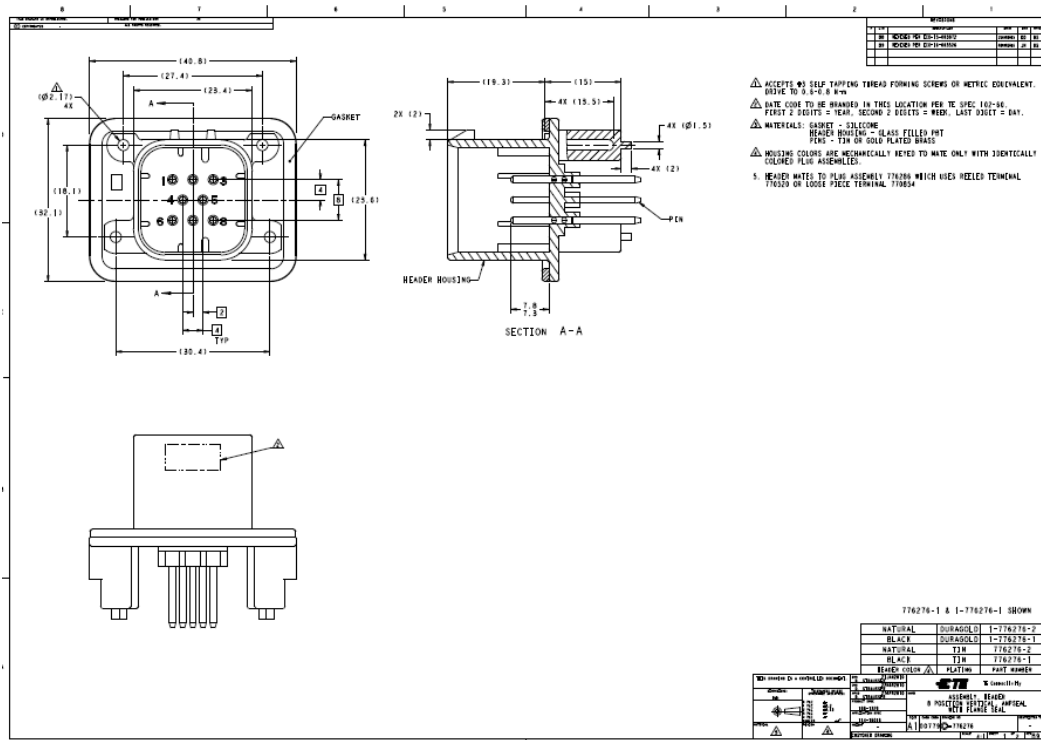


Figure 4 I/O Connector

The below table shows the description of the each pin.

CONNECTOR Main (776276-1, Black)

PN	Pin Name	Pin Type	Comments
1	FUEL_ADC	Input	Signal Input Analog (with ADC)
2	CAN Low	Input/Output	CAN Low Signal
3	IGN+	Input	IGN+ Signal Input (Logic)
4	BRK	Input	Brake signal Input (Logic)
5	GND1	Power	Digital Ground
6	SPD	Input	Speed signal Input (Logic)
7	CAN High	Input/Output	CAN High Signal
8	BAT+	Power	Car Battery +

CONNECTOR Sub (776276-2, Natural)

PN	Pin Name	Pin Type	Comments
1	ACC_TXD	Output	RS232C Level TXD Signal (Acc_Sensor)
2	GPI01	Input/Output	Digital Signal Input1/Output1 (Logic)
3	NFC_TXD	Output	RS232C Level TXD Signal
4	GPI02	Input/Output	Digital Signal Input2/Output2 (Logic)
5	GND2	Power	Digital Ground
6	ACC_RXD	Input	RS232C Level RXD Signal (Acc_Sensor)
7	GPI03	Input/Output	Digital Signal Input3/Output3 (Logic)
8	NFC_RXD	Input	RS232C Level RXD Signal

Table 2 Pin descriptions for I/O connector

4.1.2 Status LED

DTM-02W displays the status of the terminal with LED.

The LED is composed of four, and the status of the terminal according to the color is shown in the following table.

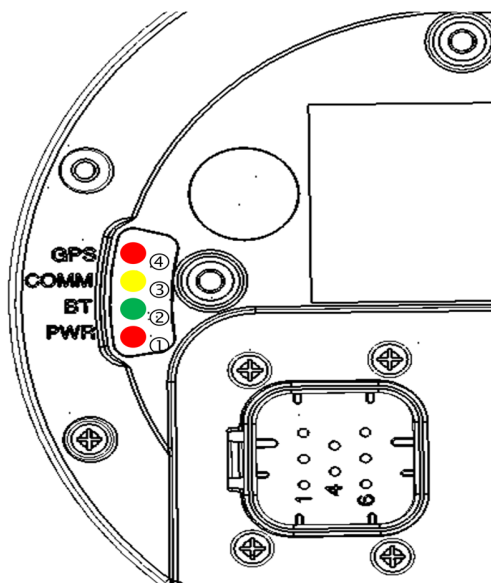


Figure 5 Status LED

No.	Item	Color	Status	Description	
①	POWER	Red	Power status	Off	• Power Off
				On	• Power On
②	BT	Green	communication status	Off	• Network is not connected
				On	• Network is successfully connected
				Blinking	• On transmitting the data
③	COMM	Yellow	WIFI Communication Status	Off	• LTE, WiFi network is not connected
				On	• LTE, WiFi network is successfully connected
				Blinking	• On transmitting the data or setting
④	GPS	Red	GPS Status	Off	• GPS is not fixed
				On	• GPS is 3D fix status

Table 3 Status LED



5 How To Use

Be sure to read the following instructions before using.

5.1 User Registration

User registration is required to use this product.

In order to registration, please contact to your sales office or visit the ["https:// lin-q.doosan-iv.com"](https://lin-q.doosan-iv.com).

For more detailed information, please refer to the Lin-Q user's guide.

5.2 WIFI Mode Operation

In order to operate the terminal in WIFI mode, you need setting.

The WIFI settings can be set with the phone app.

Please refer to the WIFI settings guide on how to set up the app.

6 Specifications

6.1 DTM-02W

Item	Specification	
Size	ø117.7(D) x 31(H) [mm] [Unit: mm]	
Weight	204 grams	
Operating Temperature	-30°C ~ +70°C	
Storage Temperature	-40°C ~ +85°C	
Vibration	Random 5~20Hz 0.05g ² /Hz, 20~150Hz: -3dB/oct.(1.7g rms), 3-axis, 30minutes for each axis.	
Thermal Shock	-40°C(1H)/+85°C(1H), 1cycle- Total24 cycle, 48H, non-operating	
Humidity	+70°C/95%/48 Hours, Operating	
Communication	WIFI	802.11b/g/n Compliant
	BT	nRF52810, Bluetooth 5.0
GPS	Chipset	UBLOX-M8030
	TTF	Cold Stat : 26sec Hot Start : 1sec
Ingress Protection	IP66	
Operating Voltage	+9Vdc ~ +34Vdc, under $\overset{\text{---}}{=}$ 3A	
I/O port	2 X 8 Pin waterproof connector	
Antenna	WIFI	Internal
	BT	Internal
LED	4 LEDs	

*Symbol : $\overset{\text{---}}{=}$, direct current.

Table 4 DTM-02W Specifications

7 Limited Warranty

- This product is manufactured through strict quality control and inspection process.
- In the event of a malfunction in normal use by the customer, the Service Center will repair it free of charge during the warranty period (one year from the date of purchase).
- Even within the warranty period, the following cases will be charged for repair.
 - Fault caused by customer's negligence or carelessness
 - Failure due to fire, flood or natural disaster
 - Flaws caused by arbitrary modification and disassembly
 - If you want to purchase parts or consumables separately
 - Lost warranty card
- When repair is required, please provide a warranty card.
- Please note that the warranty will not be re-issued.

Item	Lin-Q Terminal	Model	DTM-02W
Serial No.		Date of Purchasing	
Where to Buy			