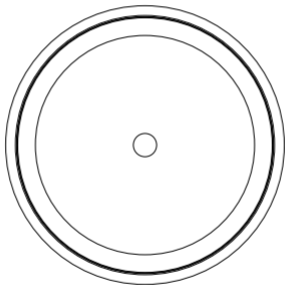


Magnetic Wireless Charger Car Mount

(ACPH004/ACPH004 Pro)

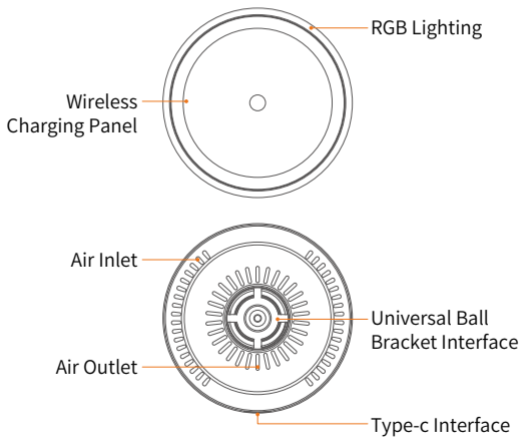


User Instructions

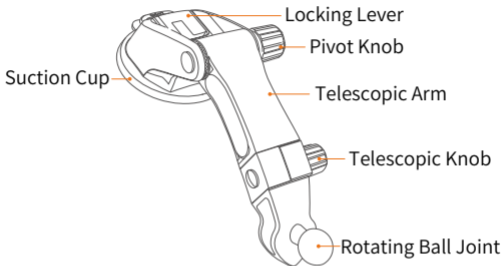
Please read the instructions carefully before use and keep it with proper storage
(V1.0)

Product Overview

1. Main Body



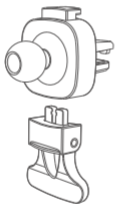
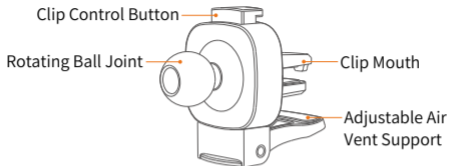
2. Accessories



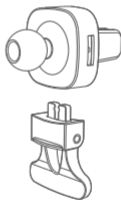
Cradle Knob



Car Charger



Suitable for horizontal air vent



Suitable for vertical air vent

Package Contents



**Magnetic Wireless
Car Charger**
X1



Vent Clamp
X1



Type-c Cable
X1



Cradle Knob
X1



**Suction Cup Mount
(For ACPH004 Pro)**
X1




**Car Charger
(Optional)**
X1

Features

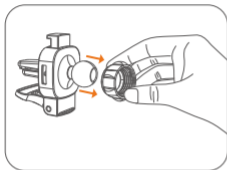
- Suitable for the original MagSafe case or other iPhone case with magnetic.
- Elegant and freeflow design with a rounded profile and ambient light complements your iPhone 13 or newer version. Experience a smarter driving experience with the set-to-drive and ambient wireless charger mount.
- Any MagSafe capable iPhone magnetically snaps in and charges, It eliminates the need to find that perfect alignment. Working with MagSafe provides a fast charging experience.
- The built-in intelligent fan adding fast Qi wireless charger improves the charging efficiency and shortens the charging time.
- Up to 15W wireless fast charging, it is suitable for all mobile phones that support Qi wireless charging.
- It all for driving safely with multi-protection : FOD (Foreign Object Detection)/overvoltage protection/overtemperature protection/overcurrent protection.
- Flexible 360° Rotation: rotating the 360° ball joint for a landscape, portrait view, adjust your viewing just right.

Specification

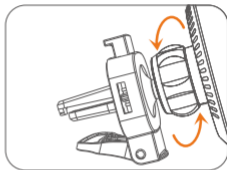
Model: ACPH004 / ACPH004 Pro	Cable length: 1M
Color: Black	Charging interface: Type-C
Main body size: 70×20.7×70mm	Best transmission distance: 3-8mm
Main body net weight: 65g	Installation method: Vent clamp type /Suction cup type
Material: ABS+PC / PC transparent black material / silica gel	Applicable parts: Air vent / Dashboard
Input: 12V Compatible with QC 3.0/PD 2.0	Applicable models: Suitable for Magsafe and cellphones with magnetic adsorption
Output: 15W Compatible with 10W/7.5W/5W	Product certification: 

Installation

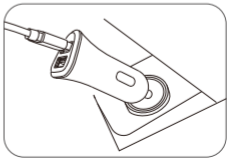
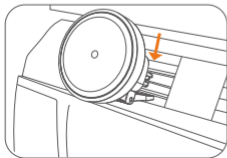
Vent clamp type | Installed in the position of air vent.



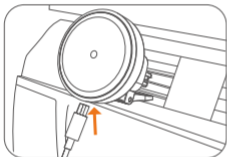
1. Put on the Cradle Knob and insert it to the Ball Joint.



2. Insert the Ball Joint forcibly into the socket at the back of the wireless charger and tighten the Cradle Knob.



3. Press the Clip Control Button to let Clamp Mouth secure the colorful light Wireless Car Charger onto the air vent, then press the Adjustable Air Vent Support to fix it.



5. Then plug in the Type-C interface into the Wireless Charger to power on the device. When the RGB indicator blinks, the Wireless Car Charger is functioning normally.

4. Plug in the Car Charger into the car's cigarette lighter or power port, and insert the USB interface of cable into the Charger's port.



6. Your iPhone effortlessly snaps into the surface of mount by strong built-in magnets.

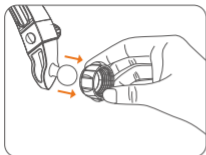
Suitable for the following air vents:



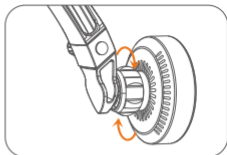
Not suitable for the following air vents:



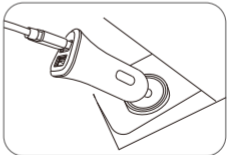
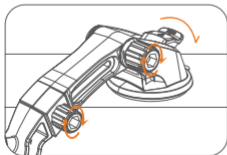
Suction cup type | Installed in the position of dashboard.



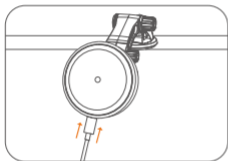
1. Put on the Cradle Knob and insert it to the Ball Joint.



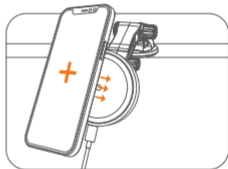
2. Insert the Ball Joint forcibly into the socket at the back of the wireless charger and tighten the Cradle Knob.



3. Clean up the dashboard, then open the Locking Lever. Press mount firmly onto the dashboard, then push the Locking Lever down to engage suction.



4. Plug in the Car Charger into the car's cigarette lighter or power port, and insert the USB interface of cable into the Charger's port.



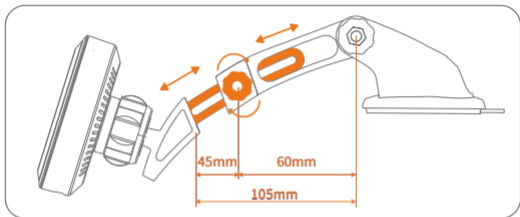
5. Then plug in the Type-C interface into the Wireless Charger to power on the device. When the RGB indicator blinks, the Wireless Car Charger is functioning normally.

6. Your iPhone effortlessly snaps into the surface of mount by strong built-in magnets.

Adjusting the Mount

Telescopic Knob

Located on top of Telescopic Arm, loosen to extend the arm and tighten to secure distance.

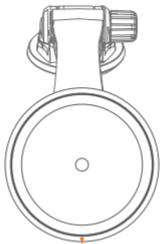


Pivot Knob

Located on the side of the Mount Base, turning allows you to pivot telescopic arm, tighten to secure position.



Operation



RGB Indicator Light

RGB Indicator Light

- ① **Standby Mode:** The colorful ambient indicator light up
- ② **Charging Mode:** Green light flashing
- ③ **Fully Charged:** Green light circles
- ④ **FOD (Foreign Object Detection) or Protection Mode:** Red Light

Cautions

1. When using this product, please use an adapter with output of 12V or compatible with QC 3.0 PD 2.0 quick charging function.
2. No metal objects, such as iron sheets, rings and metal protective coverings, can be placed on the contact surface during charging.
3. If the mobile phone is found to have the problems of intermittent charging or serious heat generation, it is most likely that the receiving coil of the mobile phone is not completely aligned with the wireless charging coil. Please try to cool the mobile phone and then align the position correctly.
4. This product has the function of input overcurrent and overvoltage protection. The improper use will shut down or reduce the output power. Please check whether the device is abnormal or improperly used.

5. Keep the operating ambient temperature at 0-25°C, do not place the product in water and fire, and the environments with too high(>40°C) and too low(<-20°C) temperature, and keep the fittings from reach of children.
6. Please use dry soft cloth to clean the surface, and do not clean with chemicals, soap or detergent.
7. Incorrect use or improper placement of the product by the user may lead to a reduction in the service life of the product or damage to the product. The consequence thus incurred is not within the scope of warranty or at the manufacturer's responsibility. We hope you can kindly understand.
8. iP cannot be fast charged under the following conditions:
 - a) iP battery level is more than 60%.
 - b) iOS version is below 11.1.2.
 - c) if the temperature of the mobile phone is higher than 35-40°C, the iP cannot enter quick charging and the speed will become slower. Please charge in an environment with appropriate temperature.
9. If the holder opens, when the vehicle stops engine, the arms will clamp immediately. Avoid pinching your fingers.

FCC Caution:

This device complies with part 15 of the FCC Rules. Operation is subject to the following two conditions: (1) This device may not cause harmful interference, and (2) this device must accept any interference received, including interference that may cause undesired operation.

Any Changes or modifications not expressly approved by the party responsible for compliance could void the user's authority to operate the equipment.

Note: This equipment has been tested and found to comply with the limits for a Class B digital device, pursuant to part 15 of the FCC Rules. These limits are designed to provide reasonable protection against harmful interference in a residential installation. This equipment generates uses and can radiate radio frequency energy and, if not installed and used in accordance with the instructions, may cause harmful interference to radio communications. However, there is no guarantee that interference will not occur in a particular installation. If this equipment does cause harmful interference to radio or television reception, which can be determined by turning the equipment off and on, the user is encouraged to try to correct the interference by one or more of the following measures:

- Reorient or relocate the receiving antenna.
- Increase the separation between the equipment and receiver.
- Connect the equipment into an outlet on a circuit different from that to which the receiver is connected.
- Consult the dealer or an experienced radio/TV technician for help.

This equipment complies with FCC radiation exposure limits set forth for an uncontrolled environment. This equipment should be installed and operated with minimum distance 20cm between the radiator & your body.