

HD-VWT8006
Vehicle-mounted wireless terminal
User Manual



Yantai Huadong Electron Technology Co., Ltd.

CONTENTS

Preface.....	- 3 -
1 Product Introduction	- 4 -
2 Function Introduction.....	- 4 -
3 Product Features.....	- 5 -
3.1 Processor and memory	- 5 -
3.2 Hard Disk	- 5 -
3.3 Display screen and touch screen.....	- 5 -
3.4 Wireless communication	- 5 -
3.5 External Interface	- 6 -
4 Use Instructions	- 6 -
4.1 Use environment.....	- 7 -
4.2 Input power.....	- 7 -
4.3 Start-up, shut-down, and brightness adjustment... -	7 -
4.4 Two-balls bracket installation.....	- 7 -
4.5 Installation process of touch screen drive.....	- 8 -
4.5.1 Drive installation.....	- 8 -
4.5.2 Touch screen calibration	- 11 -
4.6 WIFI network card drive installation and configuration.....	- 13 -
5 Troubleshooting	- 22 -
5.1 Unable to start up normally	- 22 -
5.2 Abnormal network connection, and unable to realize communication	- 23 -
6 FCC Warning	- 23 -

Preface

Dear customer,

Thank you for purchasing our product HD-VWT8006. Please read this manual carefully before using, and mind all notes and warnings mentioned in it. Please keep this manual properly for further reference.

This equipment should be placed onto a stable platform before using.

Please check voltage value before connecting line. The line should be put in a place that the line won't be trampled.

Please disconnect power before plugging in or pulling out any modules or connecting line.

Please keep the equipment dry. Any water inside may cause circuit break or other serious damage.

If any of the following happens, please contact the specialists:

Power cord damage, keyboard damage, or socket damage, water leakage;

The equipment can't work in normal or can't return to normal with the guidance of user manual.

The equipment can't work because of falling down or other

unexpected damage.

Obvious damage occurs in equipment.

1 Product Introduction

HD-VWT8006 is a voice and data integrated vehicle-mounted wireless terminal, with high-strength body design and strong shock resistance. It can be used in different conditions of environment, and satisfies the specific requirements of heavy vehicles used in port, warehouse and logistics.



2 Function Introduction

Graphical display and touch screen make the operation simpler. It is featured in easy and simple operation, anti-friction, long-life, high

Yantai Huadong Elec-Tech Co., Ltd. www.huadong.net

brightness.

Support Windows 7/Windows 10.

Support WIFI.

Support USB2.0, for better connection with other device.

It is full sealing aluminum design without fan, and reaches IP65 with good anti-shock, waterproof, and anti-dust performance, and is suitable for bad environments, such as terminal and yard, etc.

3 Product Features

3.1 Processor and memory

It adopts Intel Celeron N2807, with DDR3 4G memory.

3.2 Hard Disk

Built-in SSD 32G.

3.3 Display screen and touch screen

12.1" LCD, resolution: 1024x768, color: 16.2M/262K, brightness: 500cd/m², contrast ratio: 700: 1. Resistance-type touch screen featured in firm and anti-friction performance. It is equipped with brightness adjustment button to adjust brightness.

3.4 Wireless communication

Support 802.11/b/g/n(20M).

2.4GHz Frequency Bands: 2412MHz-2462MHz

Transmit Power $\leq 18\text{dBm}$

The antenna of the product, under normal use condition is at least 4cm away from the body of the user.

2.4GHz Antenna characteristics

Frequency Range 2400-2483MHz

Impedance 50Ohm

Polarization Vertical

Elevation Coverage 360°

Gain of Antenna 5dBi

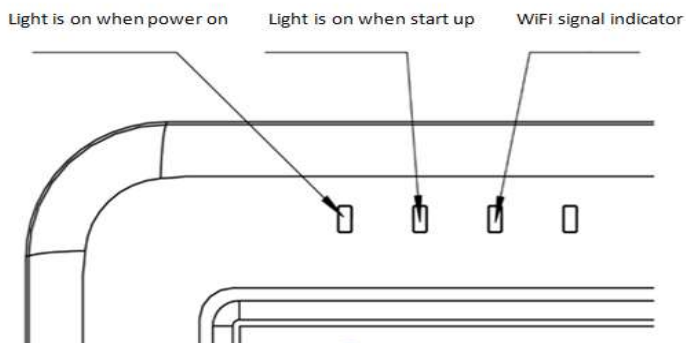
3.5 External Interface

2xUSB Host connecting mouse, keyboard or storage device.

RJ45 connecting Ethernet.

Power input 24V power supply.

4 Use Instructions



4.1 Use environment

Temperature $-20^{\circ}\text{C}\sim 50^{\circ}\text{C}$; relative humidity 5~95% (non-condense).

4.2 Input power

Input power: DC24V.

4.3 Start-up, shut-down, and brightness

adjustment

To start the equipment, we only need to press power key for 1 second; when it breaks down, we needs to press power key for 6 seconds to shut it down.


Two brightness adjustment keys are placed above the power key. “↑” is used for brightening brightness, while “↓” is used for darkening brightness. We can see a successive change of brightness if we keep pressing the key for long.

4.4 Two-balls bracket installation

At first, use the screw to fix one end of bracket to the back of terminal, and then, fix the other end of bracket to appropriate position, and put the screw, turn-knob and nut into bracket arm as following picture, and finally adjust the angle and tighten the turn-knob.

4.5 Installation process of touch screen drive

4.5.1 Drive installation

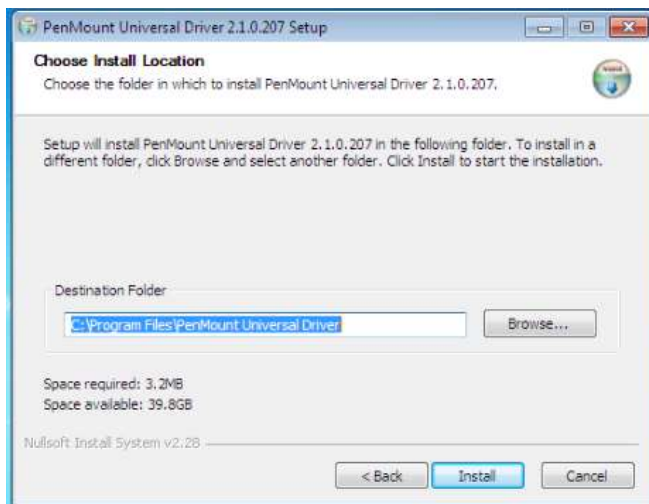
At first, use mouse left to double-click  of PenMount Universal Driver 2.1.0.207, to open installation interface, and then use mouse left to click “Next (N)”.



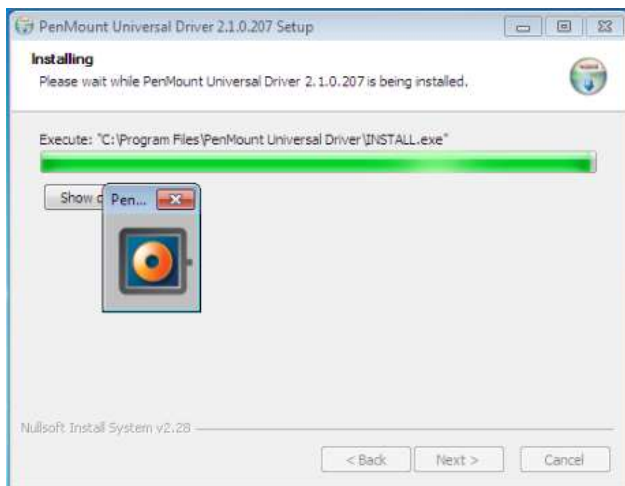
Secondly, use mouse left to click “I Agree(I)” in the following interface.



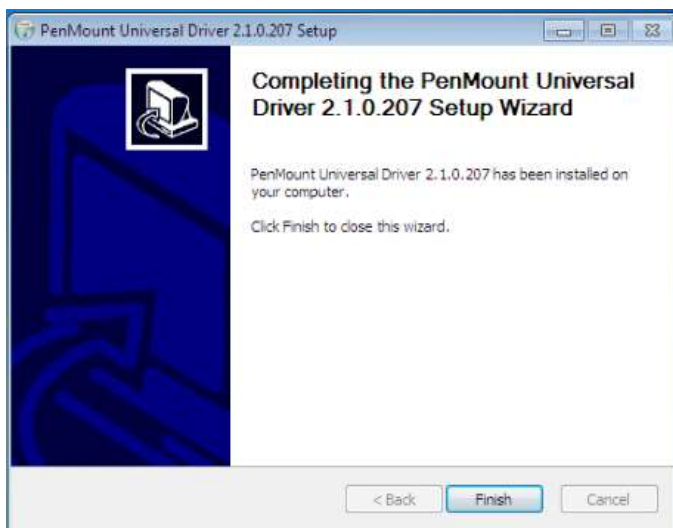
Thirdly, use mouse left to click “Install(I)” in the following interface.



Fourthly, the drive will be installed automatically after enter into the following interface.



Fifthly, use mouse left to click “Finish (F)” in the following interface, which means the drive is installed successfully.



4.5.2 Touch screen calibration

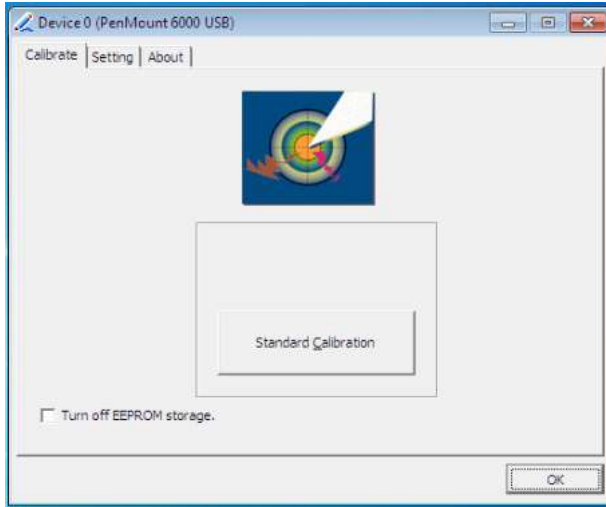
At first, use mouse to click “Start”, and then click the “PenMount Control Panel” to open the software.



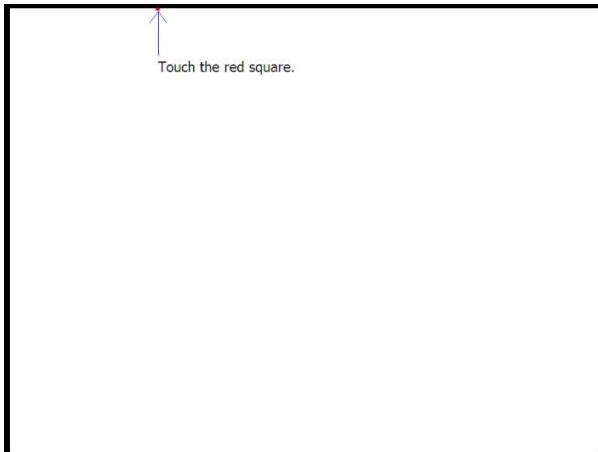
Secondly, use mouse left to click the menu “Device” in following interface, and then click “Configure”.



Thirdly, use mouse left to click “Standard Calibration” in following interface.

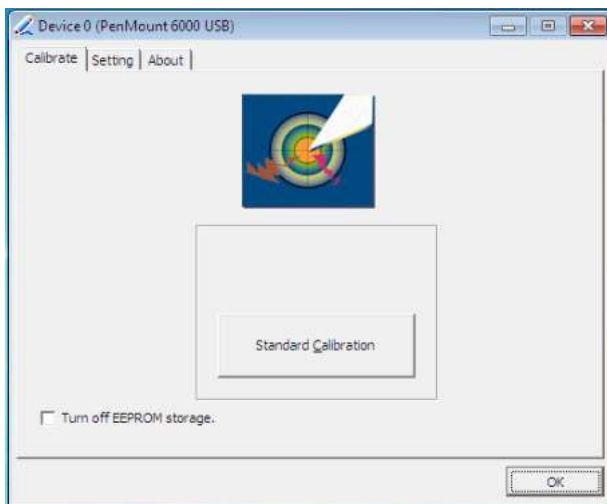


Fourthly, follow the instruction to click “Red Square”.



Fifthly, click “OK” in the following interface, which means the

touch screen is corrected successfully.

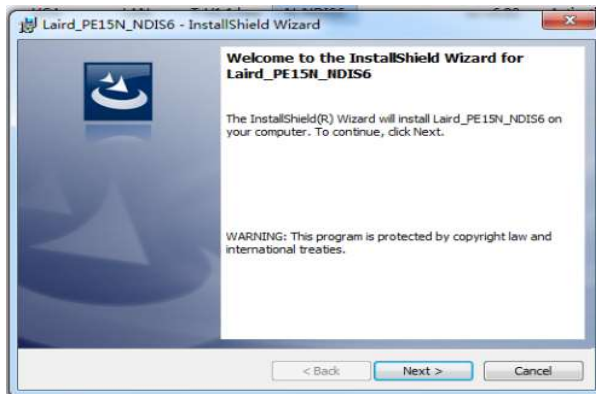


4.6 WIFI network card drive installation and configuration

Please uninstall old version drive if there was one.

Click the new drive "Laird_PE15_NDIS6" and click "NEXT" in pop-up window.

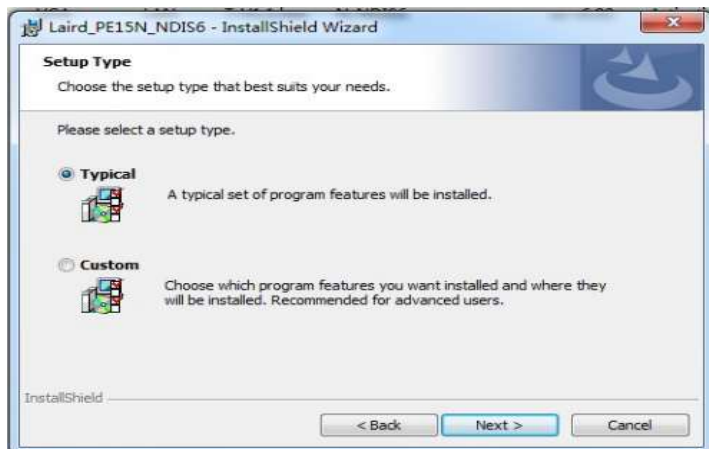




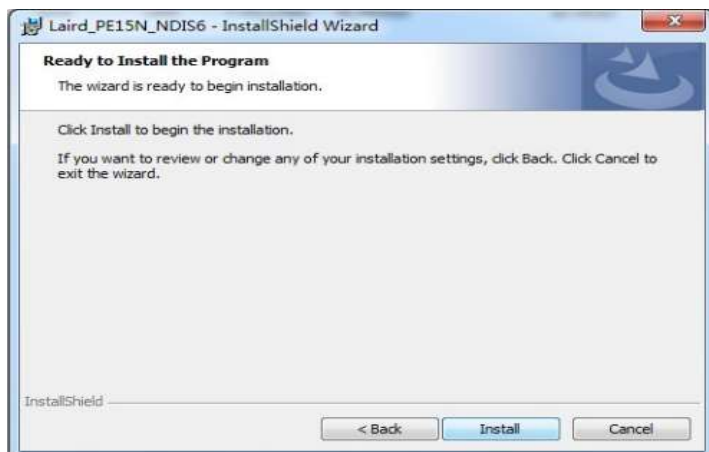
Click “NEXT”.



Click “NEXT”.



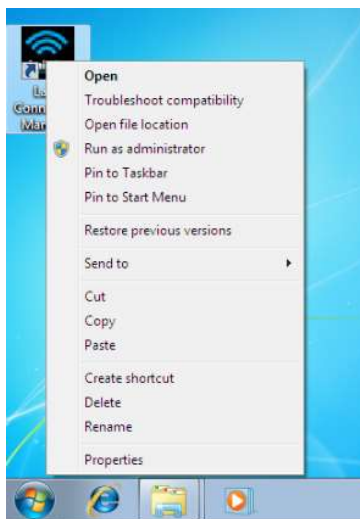
Click "Install".



Click "Finish".



Select “Laird Connection Manager”, and use mouse right to open “properties”.



Select “Run this program as an administrator” in “compatibility” and click “ok” (this program must run as administrator”).



Open “Laird Connection Manager”.



Click “Scan” in “Configuration” to scan wireless network.



Select SSID to be used and click “Configure”.



There is a pop-up window, input password “SUMMIT” , and then click “OK” (don’t press Enter key).



Click “yes” to enter into “Manage Profiles”.



Select SSID in the pull-down menu of “Profile”, and configure the “Profile” and “Globals”.



Click “Passphrase” in “Profile” interface, and input password.



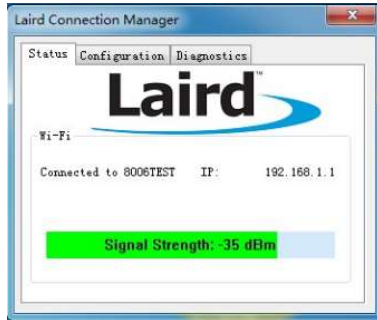
Click “Commit” after inputting password, and close this window.



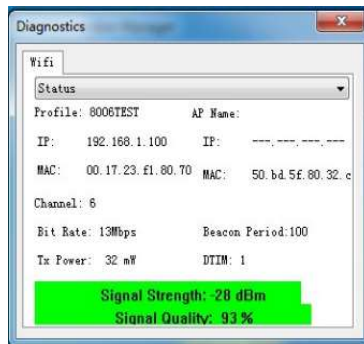
Back to “Configuration” interface, and select SSID in pull-down menu of “ActiveProfile”.



Check whether network is connected via “Status” interface.



Click “Advanced” in “Diagnostics” interface to check detailed network information.



If network is still not connected after configuration, please restart wireless card or terminal.



5 Troubleshooting

5.1 Unable to start up normally

You can check	Troubleshooting
Whether power cord connection is correct.	To plug power cord into the correct port and make sure connection is fastened and power supply is OK.
Whether it is able to start up and work in the environment with temperature between - 20℃~50℃.	To ensure the equipment start up in the proper temperature, and don't start it immediately when it is just moved from outside to indoor. For such circumstance, please wait for about 2 hours in normal temperature before starting.

5.2 Abnormal network connection, and unable to realize communication

You can check	Troubleshooting
<ol style="list-style-type: none"> 1. Whether 5db antenna is in short circuit or open circuit. 2. Whether network drive installation and setting is correct. 3. Whether IP settings and network parameter settings are correct. 	<ol style="list-style-type: none"> 1. To replace TNC line or feeder line. 2. To re-install network card drive. 3. To correct IP and wireless network parameters.

6 FCC Warning

This equipment has been tested and found to comply with the limits for a Class B digital device, pursuant to part 15 of the FCC Rules. These limits are designed to provide reasonable protection against harmful interference in a residential installation. This equipment generates, uses and can radiate radio frequency energy and, if not installed and used in accordance with the instructions, may cause harmful interference to radio communications. However, there is no guarantee that interference will not occur in a particular installation. If this equipment does cause harmful interference to radio or television reception, which can be determined by turning the equipment off and on, the user is encouraged to try to correct the interference by one or more of the following

measures:

- Reorient or relocate the receiving antenna.
- Increase the separation between the equipment and receiver.
- Connect the equipment into an outlet on a circuit different from that to which the receiver is connected.
- Consult the dealer or an experienced radio/TV technician for help.

MODIFICATION: Any changes or modifications not expressly approved by the grantee of this device could void the user's authority to operate the device.

This device complies with FCC radiation exposure limits set forth for an uncontrolled environment. In order to avoid the possibility of exceeding the FCC radio frequency exposure limits, human proximity to the antenna shall not be less than 20 cm (8 inches) during normal operation.

YANTAI HUADONG ELECTRON TECHNOLOGY CO.,LTD

Address: Huadong Elec-Tech Building, Gaoxin District, 264003
Yantai, PEOPLE'S REPUBLIC OF CHINA

Service Tel: 4006-582—577

Fax: 0535-6883060

Tel: 0535-6885693

Website: <http://www.huadong.net>

Zip Code: 264003

