



# **FCC TEST REPORT**

## **FCC PART 15 SUBPART C 15.231**

**Test report**  
**On Behalf of**  
**YELLOW KEY SUPPLY**  
**For**  
**car remote**

**Model No.: YKS-003-1060, YKS-003-1061**

**FCC ID: 2ARON-YKS003**

**Prepared for :** **YELLOW KEY SUPPLY**  
**136-50. 71RD FLUSHING NY. 11367 united state**

**Prepared By :** **Shenzhen HUAKE Testing Technology Co., Ltd.**  
**1F, B2 Building, Junfeng Zhongcheng Zhizao Innovation Park, Fuhai**  
**Street, Bao'an District, Shenzhen City, China**

**Date of Test:** **Oct. 25, 2018 ~Dec. 20, 2018**  
**Date of Report:** **Dec. 20, 2018**  
**Report Number:** **HK1810081205-E**



## TEST RESULT CERTIFICATION

**Applicant's name** ..... : YELLOW KEY SUPPLY

Address..... : 136-50. 71RD FLUSHING NY. 11367 united state

**Manufacture's Name** ..... : SHENZHEN MAISHI TECHNOLOGY CO.,LTD

Address..... : Room 1608A Gao Sheng Buliding Sha Jing street Bao An District  
SHENZHEN GUANGDONG CHINA

**Product description**

Trade Mark: N/A

Product name..... : car remote

Model and/or type reference .. : YKS-003-1060, YKS-003-1061

**Standards** ..... : FCC Rules and Regulations Part 15 Subpart C Section 15.231  
ANSI C63.10: 2013

This publication may be reproduced in whole or in part for non-commercial purposes as long as the Shenzhen HUAKE Testing Technology Co., Ltd. is acknowledged as copyright owner and source of the material. Shenzhen HUAKE Testing Technology Co., Ltd. takes no responsibility for and will not assume liability for damages resulting from the reader's interpretation of the reproduced material due to its placement and context.

**Date of Test** ..... :

Date (s) of performance of tests..... : Oct. 25, 2018 ~Dec. 20, 2018

Date of Issue..... : Dec. 20, 2018

Test Result..... : **Pass**

Testing Engineer :

(Gary Qian)

Technical Manager :

(Eden Hu)

Authorized Signatory :

(Jason Zhou)



<b>Table of Contents</b>	<b>Page</b>
1 . TEST SUMMARY	4
2 . GENERAL INFORMATION	5
2.1 GENERAL DESCRIPTION OF EUT	5
2.2 OPERATION OF EUT DURING TESTING	6
2.3 DESCRIPTION OF TEST SETUP	6
2.4 MEASUREMENT INSTRUMENTS LIST	7
3. PROVISION FOR MOMENTARY OPERATION	8
3.1 MEASUREMENT PROCEDURE	8
3.2 TEST SETUP	8
3.3 TEST RESULT	8
4. DUTY CYCLE CORRECTION FACTOR	9
4.1 MEASUREMENT PROCEDURE	9
4.2 TEST SETUP	9
4.3 TEST RESULT	9
5. RADIATED EMISSION	10
5.1. MEASUREMENT PROCEDURE	10
5.2. TEST SETUP	12
5.3. TEST RESULT	13
6. BANDWIDTH	15
6.1. MEASUREMENT PROCEDURE	15
6.2. TEST SETUP	15
6.3. TEST RESULT	16
7. PHOTOGRAPH OF TEST	18
8. PHOTOGRAPH OF EUT	19



## 1. TEST SUMMARY

### 1.1 TEST PROCEDURES AND RESULTS

FCC RULES	DESCRIPTION OF TEST	RESULT
§15.203	Antenna Requirement	Compliant
§15.231(a)(1)	Manually operated transmitter	Compliant
§15.231(b)	Average Factor	N/A
§15.231(b) & §15.209	Field Strength of Fundamental and Spurious Emission	Compliant
§15.231(c)	Bandwidth	Compliant

### 1.2 TEST FACILITY

Test Firm : Shenzhen HUAKE Testing Technology Co., Ltd.

Address : 1F, B2 Building, Junfeng Zhongcheng Zhizao Innovation Park,  
Fuhai Street, Bao'an District, Shenzhen City, China

Designation Number: : CN1229

Test Firm Registration Number : 616276

### 1.3 MEASUREMENT UNCERTAINTY

Measurement Uncertainty

Conducted Emission Expanded Uncertainty = 2.23dB, k=2

Radiated emission expanded uncertainty(9kHz-30MHz) = 3.08dB, k=2

Radiated emission expanded uncertainty(30MHz-1000MHz) = 4.42dB, k=2

Radiated emission expanded uncertainty(Above 1GHz) = 4.06dB, k=2



## 2. GENERAL INFORMATION

### 2.1 GENERAL DESCRIPTION OF EUT

<b>Operation Frequency</b>	315MHz
<b>Modulation</b>	FSK
<b>Number of channels</b>	1
<b>Hardware Version</b>	V1.0
<b>Software Version</b>	V1.0
<b>Antenna Designation</b>	PCB antenna
<b>Antenna Gain</b>	0dBi
<b>Power Supply</b>	DC 3V by Button Battery



## 2.2 OPERATION OF EUT DURING TESTING

NO.	TEST MODE DESCRIPTION
1	Transmitting mode
Note: 1. All the test modes can be supply by new battery, and only the data of the worst case recorded in the test report. 2. For Radiated Emission, 3axis were chosen for testing for each applicable mode.	

## 2.3 DESCRIPTION OF TEST SETUP

Operation of EUT during Radiation and Above1GHz Radiation testing:

EUT



## 2.4 MEASUREMENT INSTRUMENTS LIST

Item	Equipment	Manufacturer	Model No.	Serial No.	Last Cal.	Cal. Interval
1.	L.I.S.N. Artificial Mains Network	R&S	ENV216	HKE-002	Dec. 28, 2017	1 Year
2.	Receiver	R&S	ESCI 7	HKE-010	Dec. 28, 2017	1 Year
3.	RF automatic control unit	Tonscend	JS0806-2	HKE-060	Dec. 28, 2017	1 Year
4.	Spectrum analyzer	R&S	FSP40	HKE-025	Dec. 28, 2017	1 Year
5.	Spectrum analyzer	Agilent	N9020A	HKE-048	Dec. 28, 2017	1 Year
6.	Preamplifier	Schwarzbeck	BBV 9743	HKE-006	Dec. 28, 2017	1 Year
7.	EMI Test Receiver	Rohde & Schwarz	ESCI 7	HKE-010	Dec. 28, 2017	1 Year
8.	Bilog Broadband Antenna	Schwarzbeck	VULB9163	HKE-012	Dec. 28, 2017	1 Year
9.	Loop Antenna	Schwarzbeck	FMZB 1519 B	HKE-014	Dec. 28, 2017	1 Year
10.	Horn Antenna	Schwarzbeck	9120D	HKE-013	Dec. 28, 2017	1 Year
11.	Pre-amplifier	EMCI	EMC051845 SE	HKE-015	Dec. 28, 2017	1 Year
12.	Pre-amplifier	Agilent	83051A	HKE-016	Dec. 28, 2017	1 Year
13.	EMI Test Software EZ-EMC	Tonscend	JS1120-B Version	HKE-083	Dec. 28, 2017	N/A
14.	Shielded room	Shiel Hong	4*3*3	HKE-039	Dec. 28, 2017	3 Year

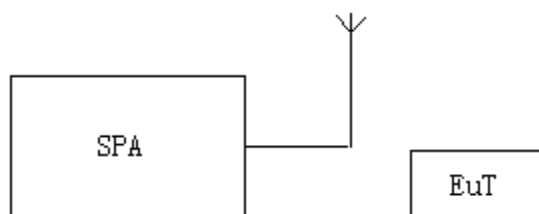


### 3. PROVISION FOR MOMENTARY OPERATION

#### 3.1 MEASUREMENT PROCEDURE

1. Set the parameters of SPA as below:  
Centre frequency = Operation Frequency  
RBW=1MHz, VBW=3MHz  
Span: 0Hz  
Sweep time: 10.00s
2. Set the EUT to transmit by manually operated. Use the "View" function of SPA to find the transmission time of being released.
3. Record the data and Reported.

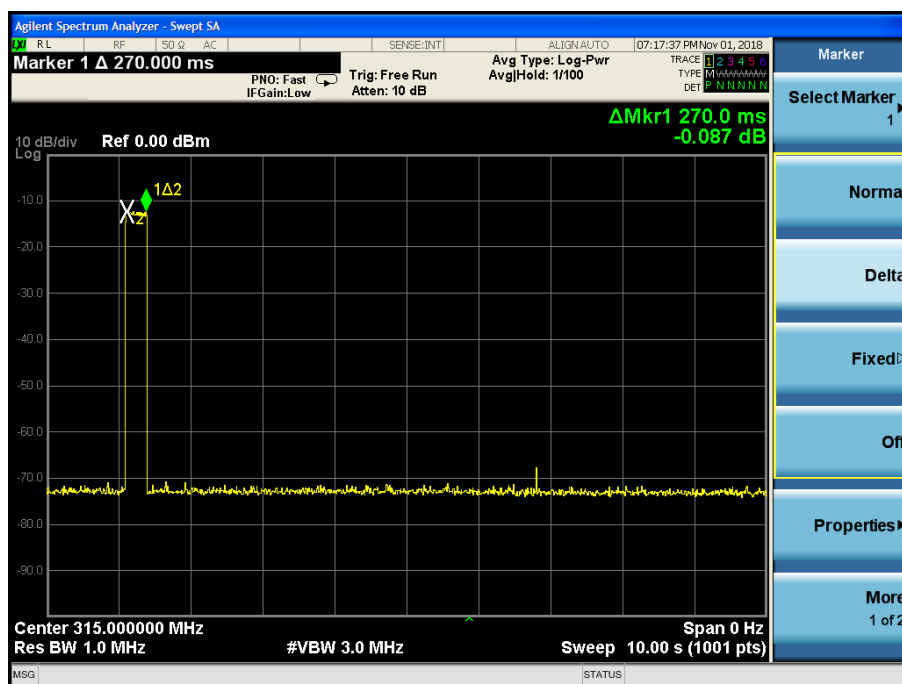
#### 3.2 TEST SETUP



#### 3.3 TEST RESULT

Test Mode: EUT @ 315MHz for RF Transmitter

The time of stopping transmission(s)	Limit (s)
0.270	5.00



RESULT: PASS



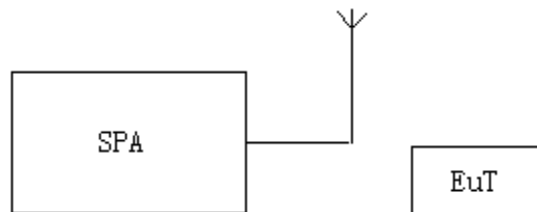


## 4. DUTY CYCLE CORRECTION FACTOR

### 4.1 MEASUREMENT PROCEDURE

1. Set the parameters of SPA as below:  
Centre frequency = Operation Frequency  
RBW=1MHz; VBW=3MHz  
Span: 0Hz  
Sweep time: more than two pulse trains or more than each type of pulse occupancy time
2. Set the EUT to transmit by manually operated. Use the “Delta mark” function of SPA to find the period time between two pulse trains and each type of pulse occupancy time.
3. Record the plots and Reported.

### 4.2 TEST SETUP



### 4.3 TEST RESULT

Note: The level of the peak emission are less than the average limit, so the average factor need not to be tested.



## 5. RADIATED EMISSION

### 5.1. MEASUREMENT PROCEDURE

1. The EUT was placed on the top of the turntable 0.8 or 1.5 meter above ground. The phase center of the receiving antenna mounted on the top of a height-variable antenna tower was placed 3 meters far away from the turntable.
2. Power on the EUT and all the supporting units. The turntable was rotated by 360 degrees to determine the position of the highest radiation.
3. The height of the broadband receiving antenna was varied between one meter and four meters above ground to find the maximum emissions field strength of both horizontal and vertical polarization.
4. For each suspected emissions, the antenna tower was scan (from 1 M to 4 M) and then the turntable was rotated (from 0 degree to 360 degrees) to find the maximum reading.
5. Set the test-receiver system to Peak or CISPR quasi-peak Detect Function with specified bandwidth under Maximum Hold Mode.
6. For emissions above 1GHz, use 1MHz VBW and RBW for peak reading. Then 1MHz RBW and 10Hz VBW for average reading in spectrum analyzer. Place the measurement antenna away from each area of the EUT determined to be a source of emissions at the specified measurement distance, while keeping the measurement antenna aimed at the source of emissions at each frequency of significant emissions, with polarization oriented for maximum response. The measurement antenna may have to be higher or lower than the EUT, depending on the radiation pattern of the emission and staying aimed at the emission source for receiving the maximum signal. The final measurement antenna elevation shall be that which maximizes the emissions. The measurement antenna elevation for maximum emissions shall be restricted to a range of heights of from 1 m to 4 m above the ground or reference ground plane.
7. When the radiated emissions limits are expressed in terms of the average value of the emissions, and pulsed operation is employed, the measurement field strength shall be determined by averaging over one complete pulse train, including blanking intervals, as long as the pulse train does not exceed 0.1 seconds. As an alternative (provided the transmitter operates for longer than 0.1 seconds) or in cases where the pulse train exceeds 0.1 seconds, the measured field strength shall be determined from the average absolute voltage during a 0.1 second interval during which the field strength is at its maximum values.
8. If the emissions level of the EUT in peak mode was 3 dB lower than the average limit specified, then testing will be stopped and peak values of EUT will be reported, otherwise, the emissions which do not have 3 dB margin will be repeated one by one using the quasi-peak method for below 1GHz.
9. For testing above 1GHz, the emissions level of the EUT in peak mode was lower than average limit (that means the emissions level in peak mode also complies with the limit in average mode), then testing will be stopped and peak values of EUT will be reported, otherwise, the emissions will be measured in average mode again and reported.
10. In case the emission is lower than 30MHz, loop antenna has to be used for measurement and the recorded data should be QP measured by receiver. High - Low scan is not required in this case.



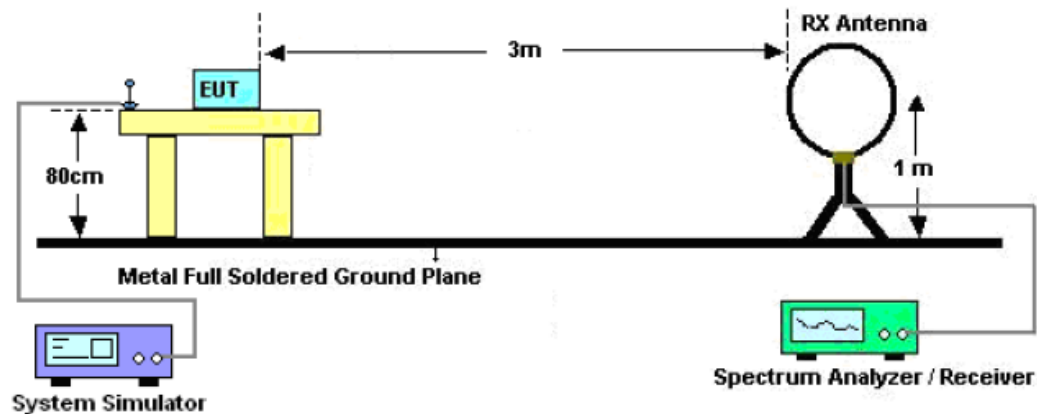
The following table is the setting of spectrum analyzer and receiver.

Spectrum Parameter	Setting
Start ~Stop Frequency	9KHz~150KHz/RBW 200Hz for QP
Start ~Stop Frequency	150KHz~30MHz/RBW 9KHz for QP
Start ~Stop Frequency	30MHz~1000MHz/RBW 120KHz for QP
Start ~Stop Frequency	1GHz~26.5GHz 1MHz/1MHz for Peak, 1MHz/10Hz for Average

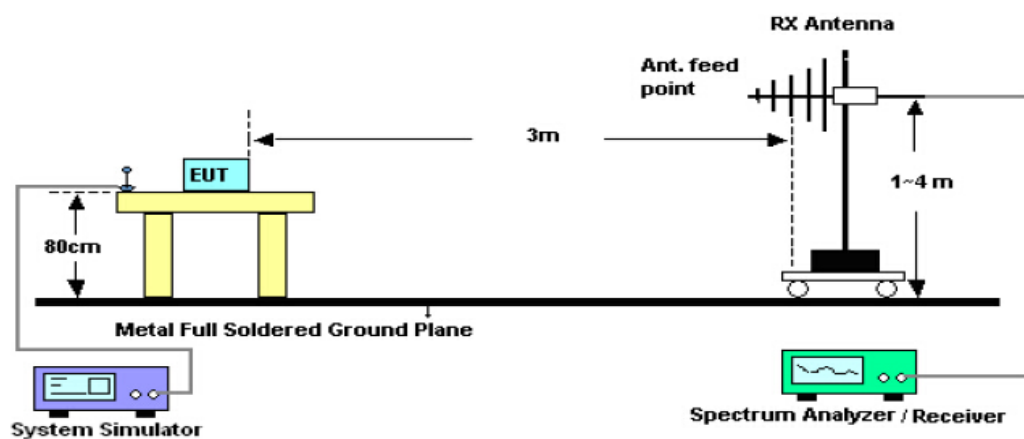
Receiver Parameter	Setting
Start ~Stop Frequency	9KHz~150KHz/RBW 200Hz for QP
Start ~Stop Frequency	150KHz~30MHz/RBW 9KHz for QP
Start ~Stop Frequency	30MHz~1000MHz/RBW 120KHz for QP

## 5.2. TEST SETUP

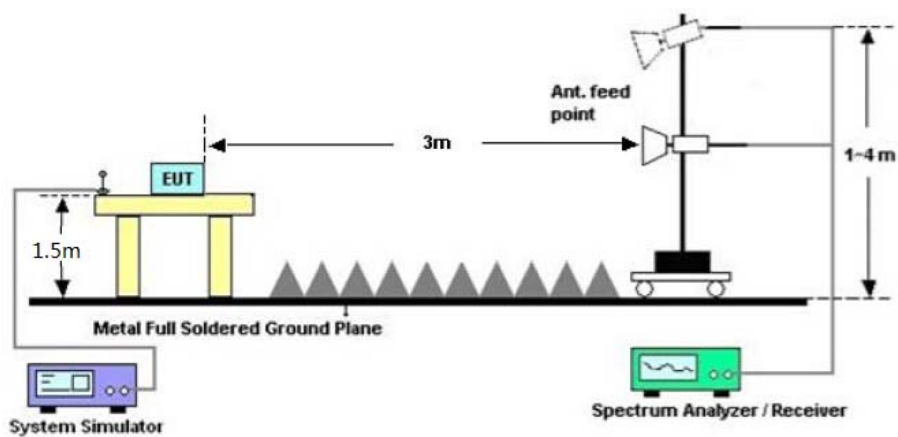
Radiated Emission Test-Setup Frequency Below 30MHz



RADIATED EMISSION TEST SETUP 30MHz-1000MHz



RADIATED EMISSION TEST SETUP ABOVE 1000MHz





### 5.3. TEST RESULT

According to the data below, the FCC Part 15.205, 15.209 and 15.231 standards, and had the worst margin of:

Note: this EUT was tested in 3 orthogonal positions and the worst case position data was reported.

The level of the peak emission are less than the average limit, so the average value is not reflected in the report.

#### *Horizontal*

No.	Frequency	Reading	Corr.	Duty cycle	Result	Limit	Margin	Deg.	Height	Remark
	MHz	dBuV/m	Factor (dB)	Factor (dB)	dBuV/m	dBuV/m	dB	(°)	(cm)	
1	315.00	49.67	12.33	N/A	62	95.63	-33.63	169	100	peak
2	630.00	20.36	15.82	N/A	36.18	55.63	-19.45	168	100	QP

#### *Above 1GHz*

No.	Frequency	Reading	Corr.	Duty cycle	Result	Limit	Margin	Deg.	Height	Remark
	MHz	dBuV/m	Factor (dB)	Factor (dB)	dBuV/m	dBuV/m	dB	(°)	(cm)	
1	1260.00	23.56	25.83	N/A	49.39	74	-24.61	41	100	Peak
2	1575.00	20.67	27.25	N/A	47.92	74	-26.08	204	100	Peak

*Vertical*

No.	Frequency	Reading	Corr.	Duty cycle	Result	Limit	Margin	Deg.	Height	Remark
	MHz	dBuV/m	Factor (dB)	Factor (dB)	dBuV/m	dBuV/m	dB	(°)	(cm)	
1	315.00	45.87	12.23	N/A	58.10	95.63	-37.53	103	300	peak
2	630.00	18.47	16.26	N/A	34.73	55.63	-20.9	125	200	QP

*Above 1GHz*

No.	Frequency	Reading	Corr.	Duty cycle	Result	Limit	Margin	Deg.	Height	Remark
	MHz	dBuV/m	Factor (dB)	Factor (dB)	dBuV/m	dBuV/m	dB	(°)	(cm)	
1	1260.00	21.36	25.83	N/A	47.19	74	-26.81	166	100	Peak
2	1575.00	19.38	27.25	N/A	46.63	74	-27.37	245	100	Peak

*Note: Testing is carried out with frequency rang 30MHz to the tenth harmonics, which above 5<sup>th</sup> Harmonics are attenuated more than 20dB below the permissible limits or the field strength is too small to be measured.*

*The fundamental frequency is 315MHz, so the fundamental and spurious emissions radiated limit base on the the operating frequency 315MHz.*

*Frequency Range (9 kHz-30MHz)*

Frequency (MHz)	Level@3m (dBuV/m)		Limit@3m (dBuV/m)	
--	--	--	--	--
--	--	--	--	--
--	--	--	--	--

*Note: 1. Emission Level=Reading+ Cable loss-Antenna factor-Amp factor*

*2. The emission levels are 20 dB below the limit value, which are not reported. It is deemed to comply with the requirement.*

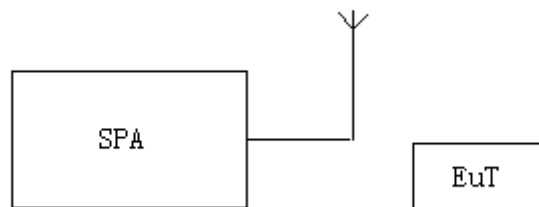


## 6. BANDWIDTH

### 6.1. MEASUREMENT PROCEDURE

1. Set the parameters of SPA as below:  
Centre frequency = Operation Frequency  
RBW=10 KHz  
VBW=30 KHz  
Span: 500 KHz  
Sweep time: Auto
2. Set the EUT to continue transmitting mode. Allow the trace to stabilize. Use the “N dB down” function of SPA to define the bandwidth.
3. Record the plots and Reported.

### 6.2. TEST SETUP

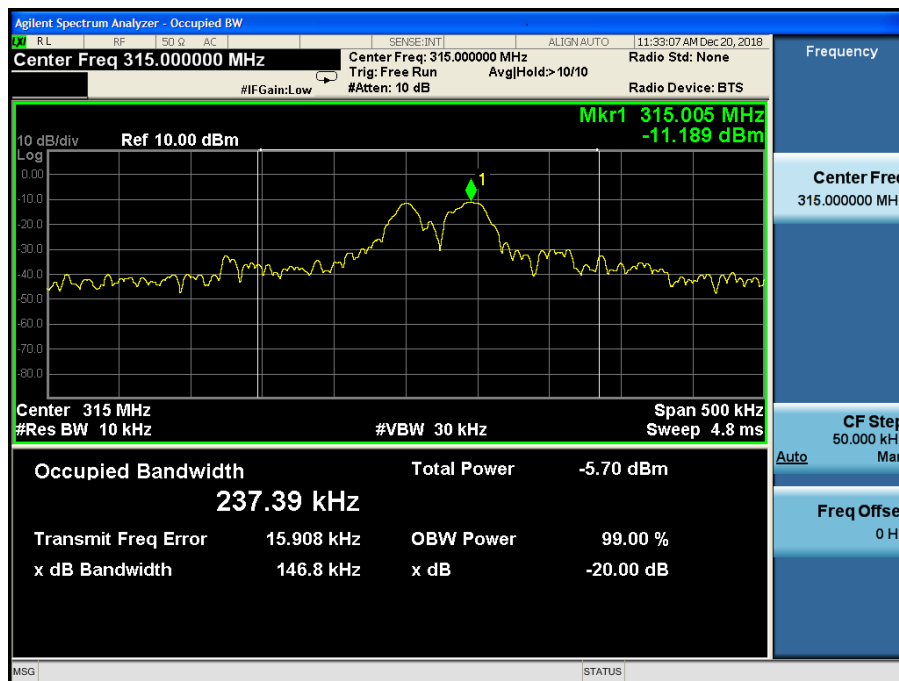




### 6.3. TEST RESULT

Test Mode: EUT @ 315MHz for RF Transmitter

-20dB bandwidth	LIMIT	RESULT
146.8kHz	787.5KHz	Pass
Note: Limit= Operation Frequency ×0.25%		

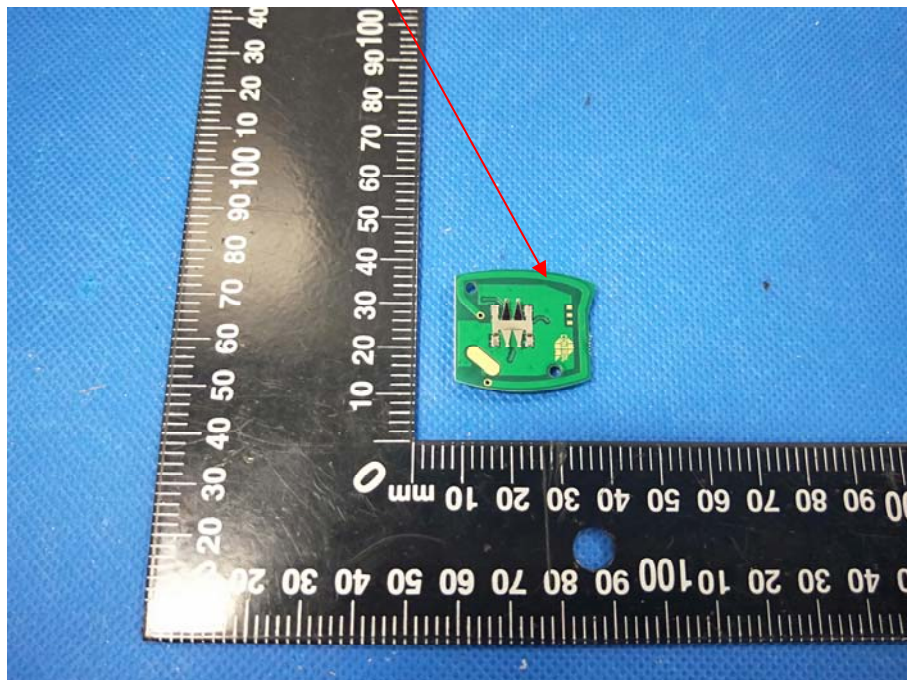
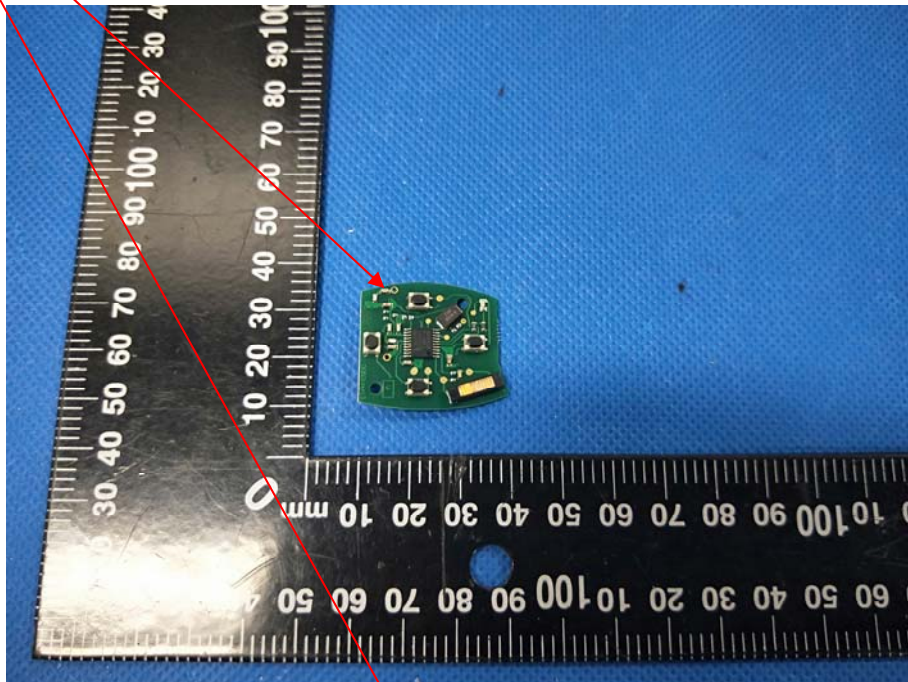




## 7. Antenna Connected Construction

The RF antenna is a PCB Antenna which permanently attached, and the best case gain of the Antenna is 0 dBi. It complies with the standard requirement.

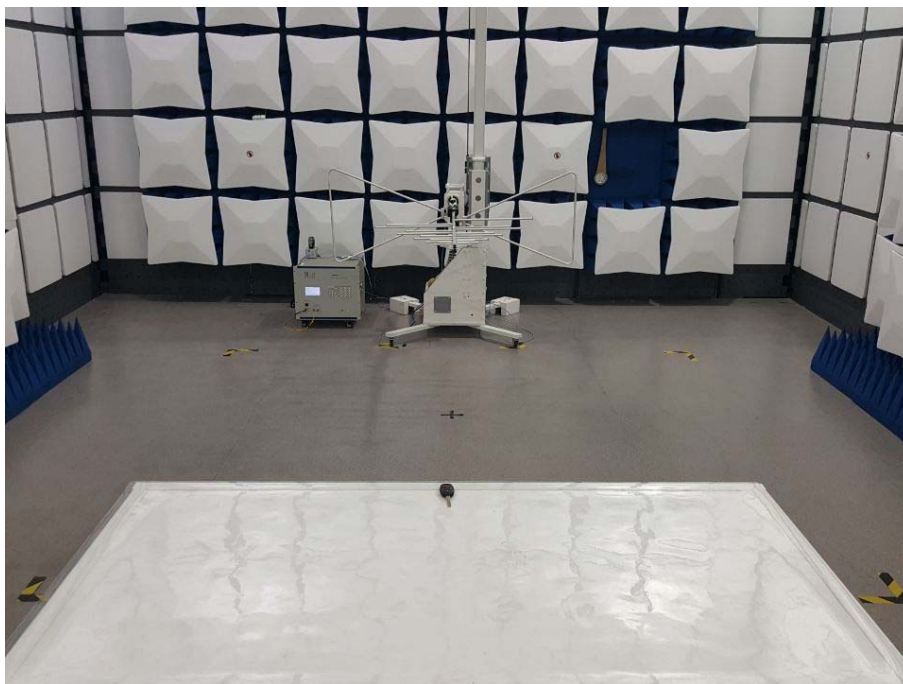
ANTENNA :





## 8. PHOTOGRAPH OF TEST

### Radiated Emission







## 8. PHOTOGRAPH OF EUT





YKS-003-1060







YKS-003-1061

