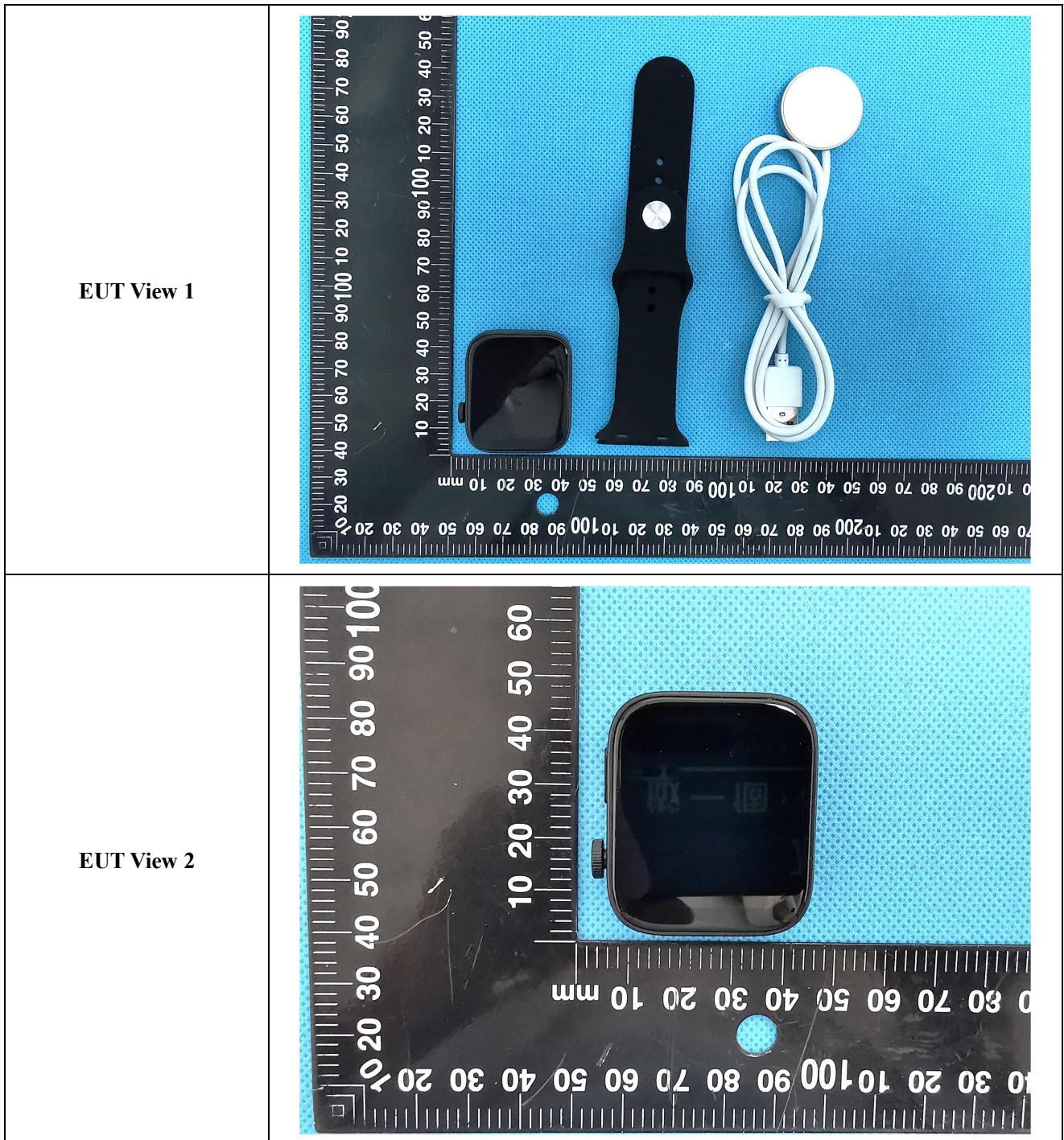
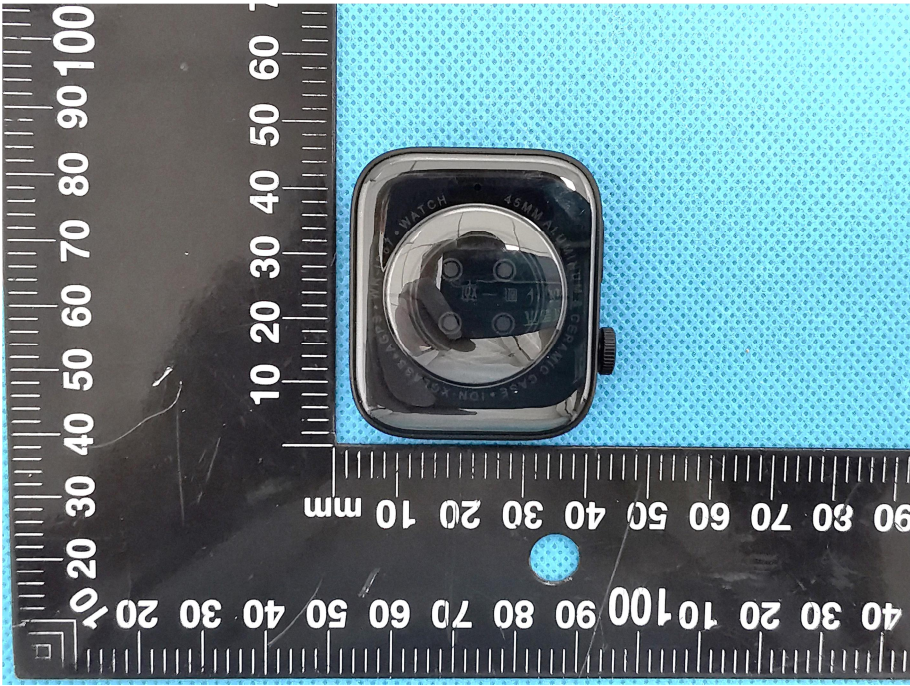

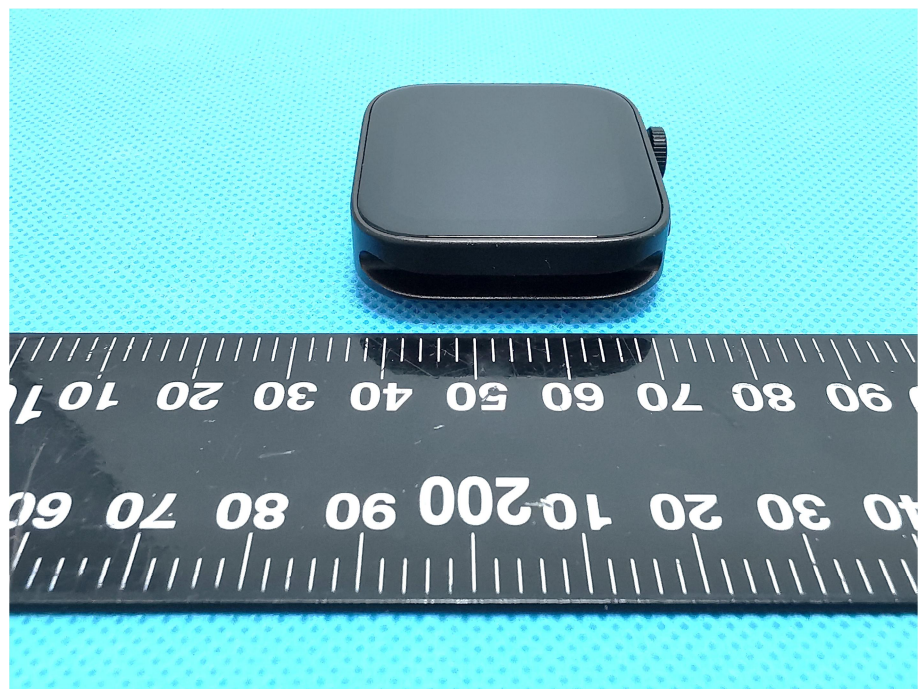


## EXHIBIT 2 - EUT EXTERNAL PHOTOGRAPHS



<p><b>EUT View 3</b></p>	 <p>A photograph showing the back view of a black smartwatch case. The case has a clear back cover that reveals the internal components, including a circular sensor and two small rectangular sensors. The case is placed on a blue textured surface. A black ruler with white markings is positioned below the case, showing measurements in millimeters. The ruler is oriented vertically, with the 0 mark at the top and the 100 mark at the bottom. The case is approximately 45mm wide and 50mm high.</p>
<p><b>EUT View 4</b></p>	 <p>A photograph showing the front view of a black smartwatch case. The case has a rounded rectangular shape with a black display area. A red-tipped crown is visible on the right side. The case is placed on a blue textured surface. A black ruler with white markings is positioned below the case, showing measurements in millimeters. The ruler is oriented horizontally, with the 0 mark on the left and the 100 mark on the right. The case is approximately 45mm wide and 50mm high.</p>

**EUT View 5**



**EUT View 6**



**EUT View 7**

