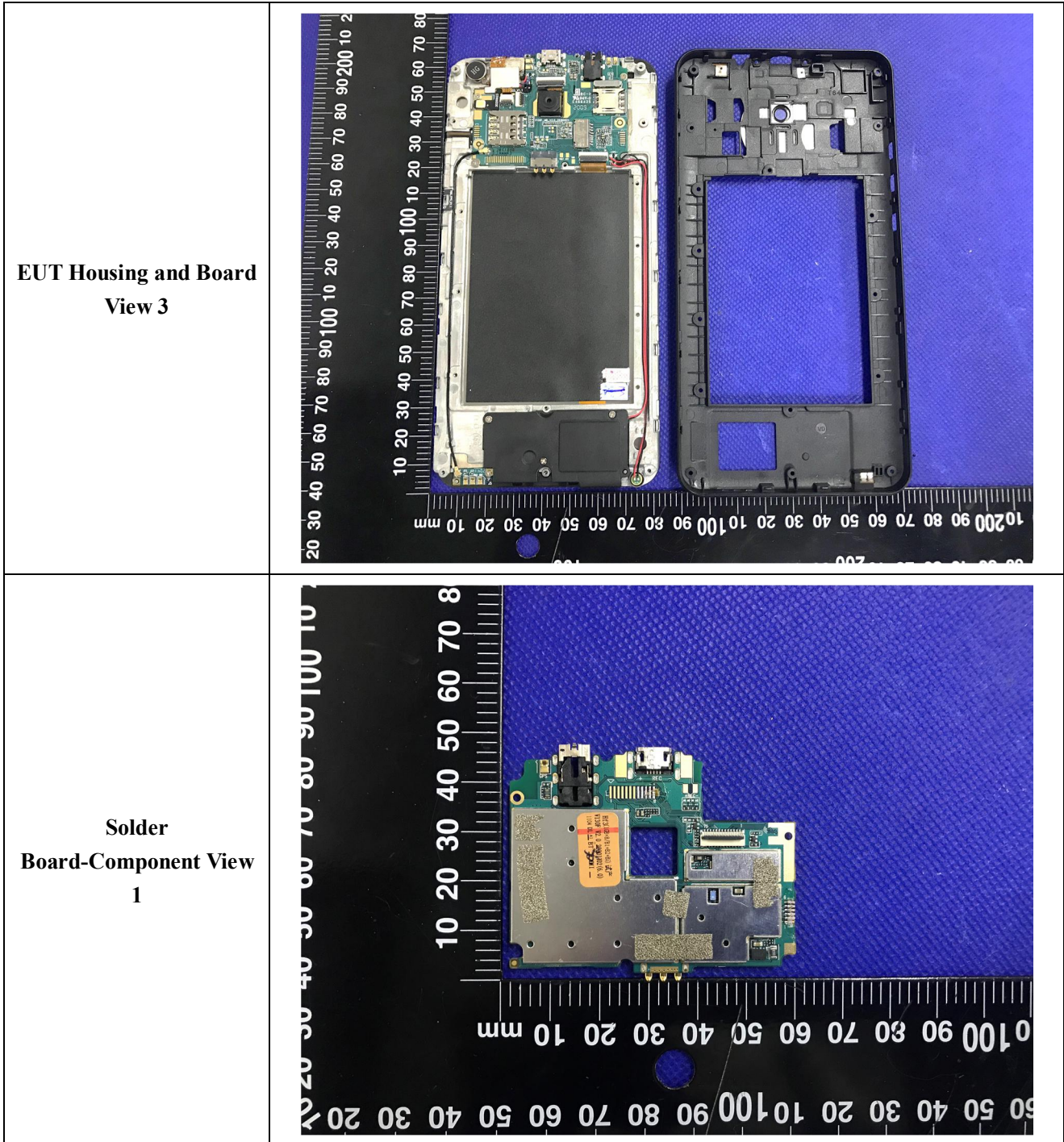
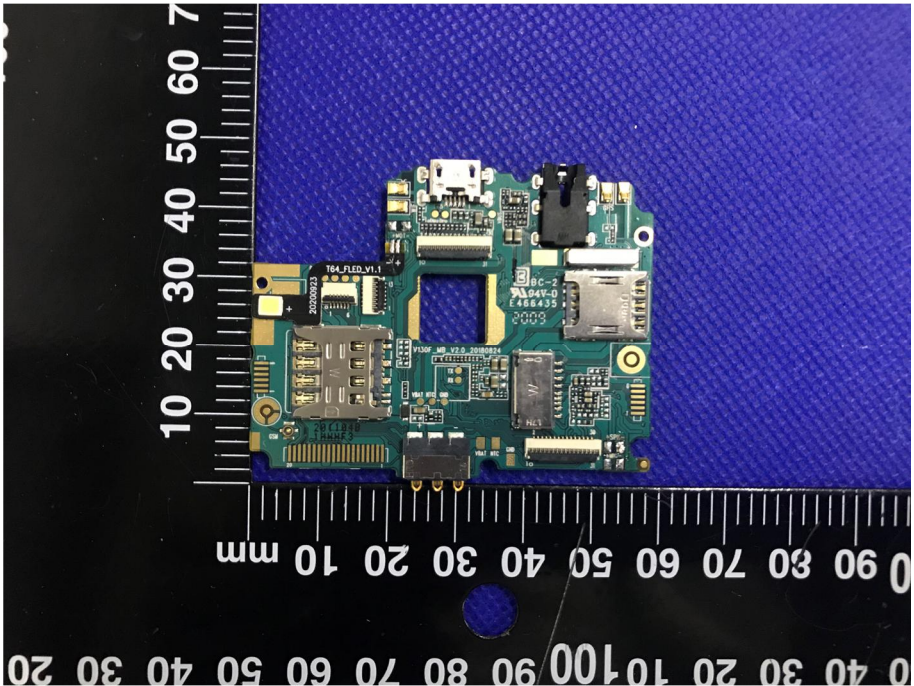
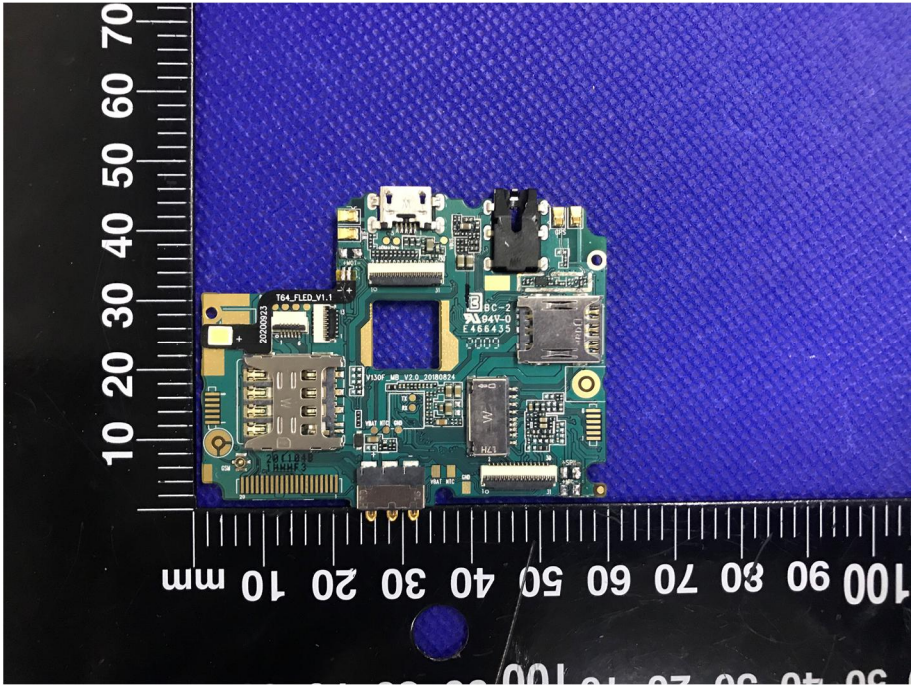
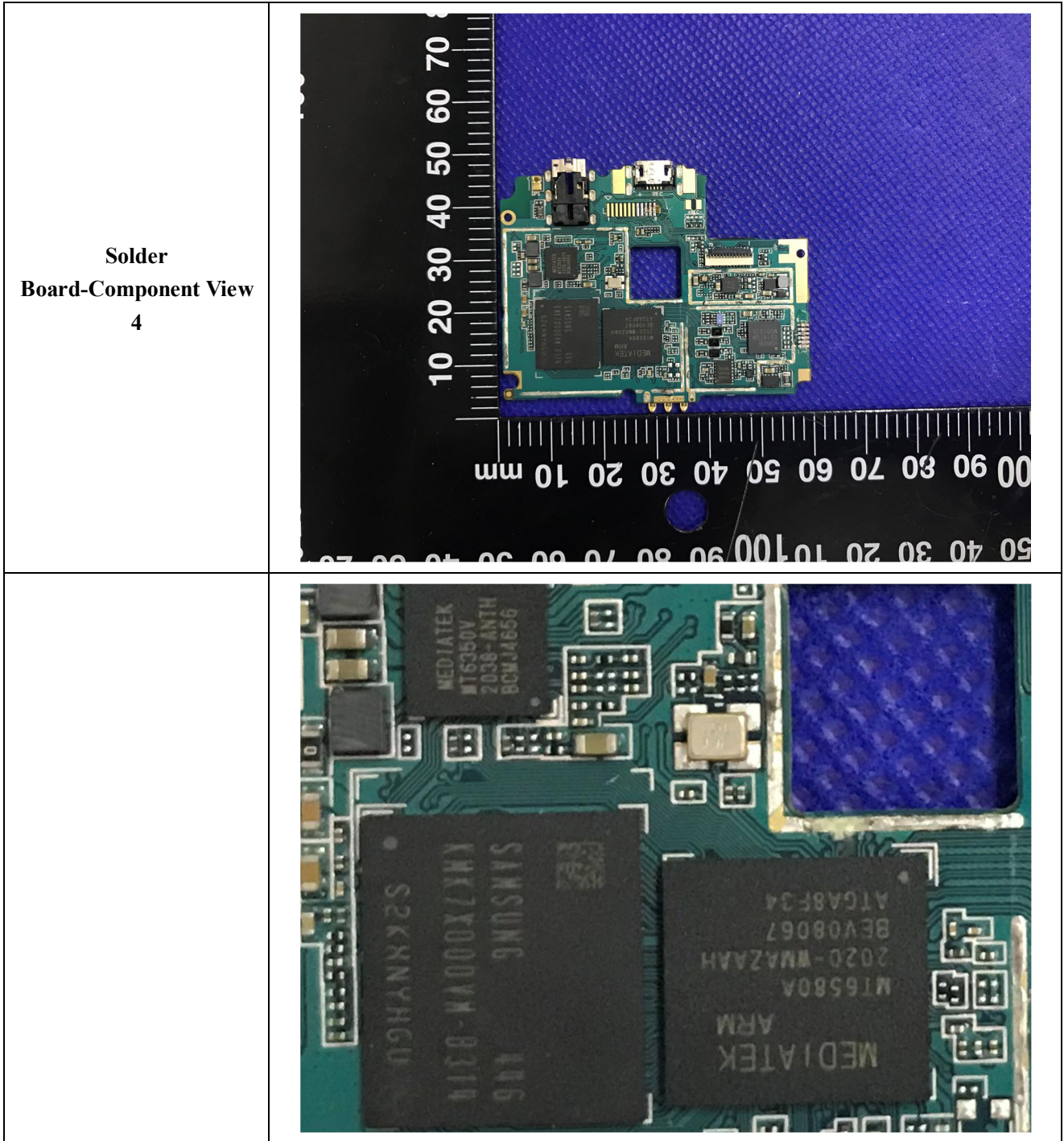


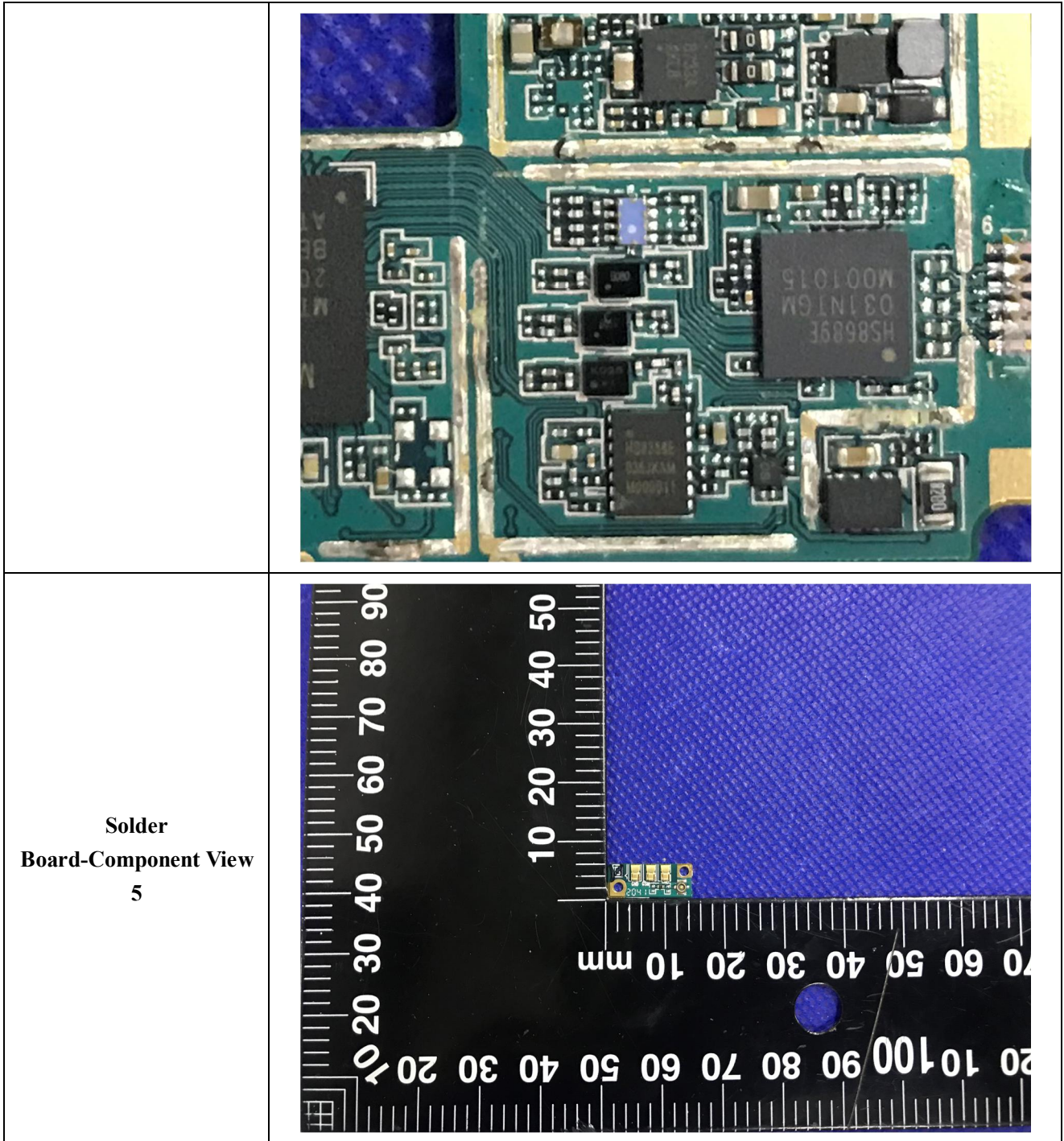
EXHIBIT 3 - EUT INTERNAL PHOTOGRAPHS

<p>EUT Housing and Board View 1</p>	
<p>EUT Housing and Board View 2</p>	



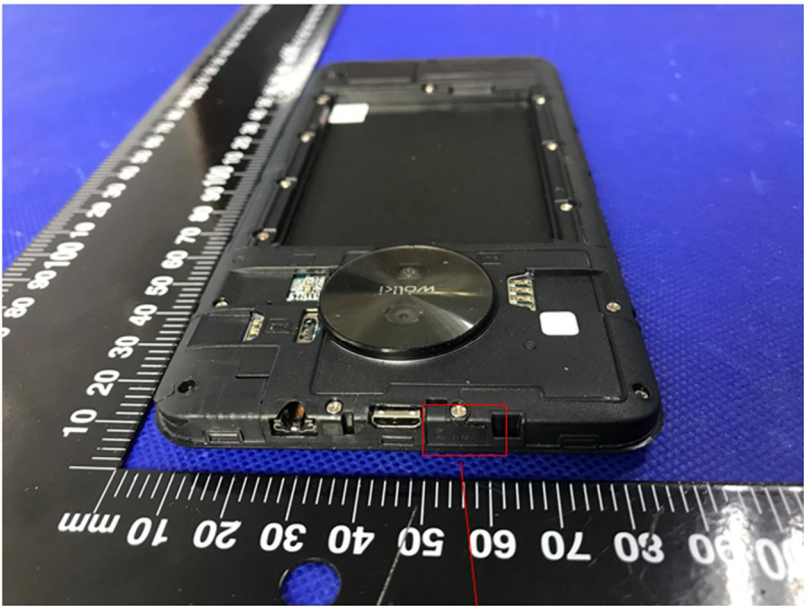
<p>Solder Board-Component View 2</p>	 <p>A photograph of a green printed circuit board (PCB) component, labeled 'Solder Board-Component View 2'. The board is irregularly shaped and populated with various electronic components, including a large multi-pin connector on the left, a microcontroller or processor in the center, and several smaller integrated circuits and passive components. The board is placed on a blue textured surface. A black ruler with white markings is positioned vertically on the left side of the board, showing measurements from 0 to 70 mm. A horizontal ruler is also visible at the bottom of the image, showing measurements from 0 to 100 mm.</p>
<p>Solder Board-Component View 3</p>	 <p>A photograph of the same green PCB component, labeled 'Solder Board-Component View 3'. This view is very similar to View 2, showing the same components and layout. The board is placed on the same blue textured surface. A black ruler with white markings is positioned vertically on the left side, showing measurements from 0 to 70 mm. A horizontal ruler is also visible at the bottom, showing measurements from 0 to 100 mm.</p>





<p style="text-align: center;">Solder Board-Component View 6</p>	
<p style="text-align: center;">Antenna View</p>	

Antenna View



WiFi/BT Ant.