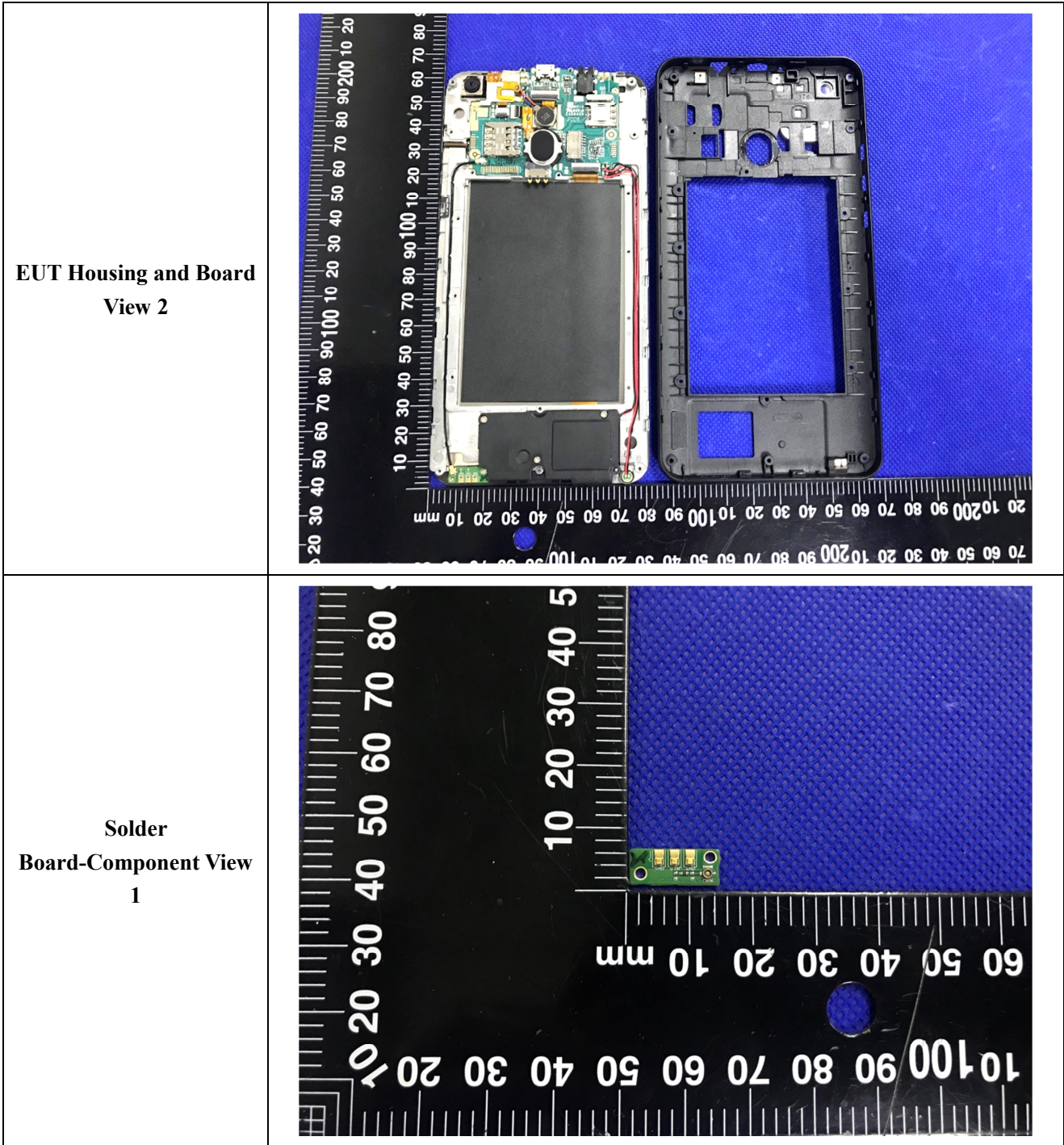
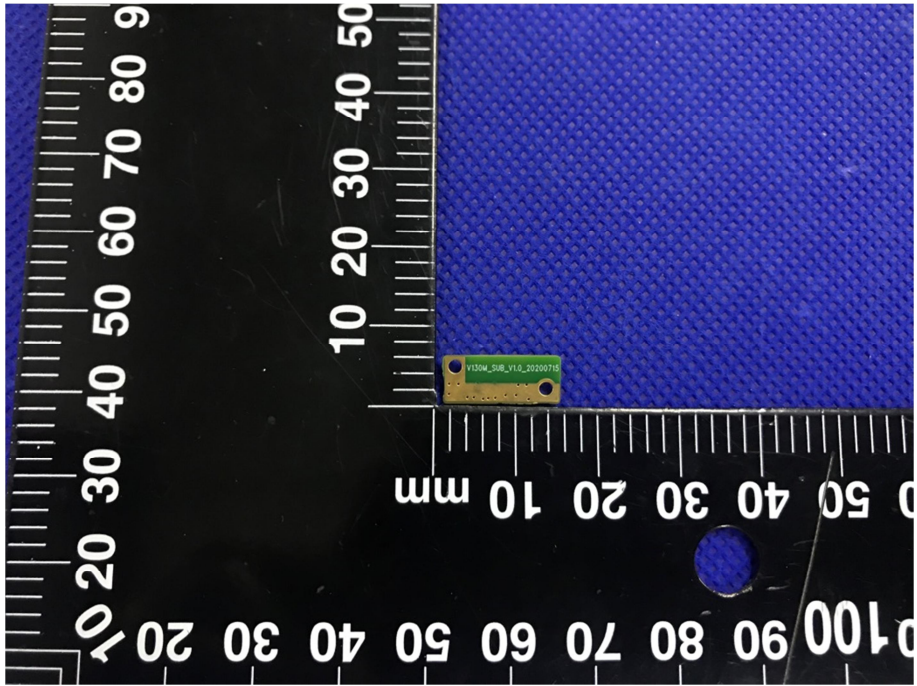
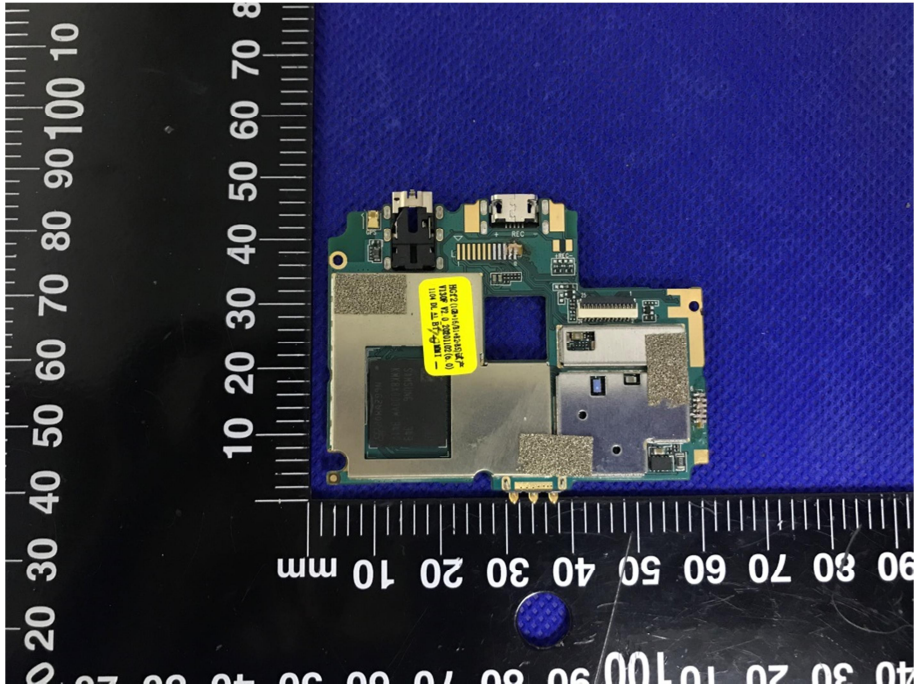
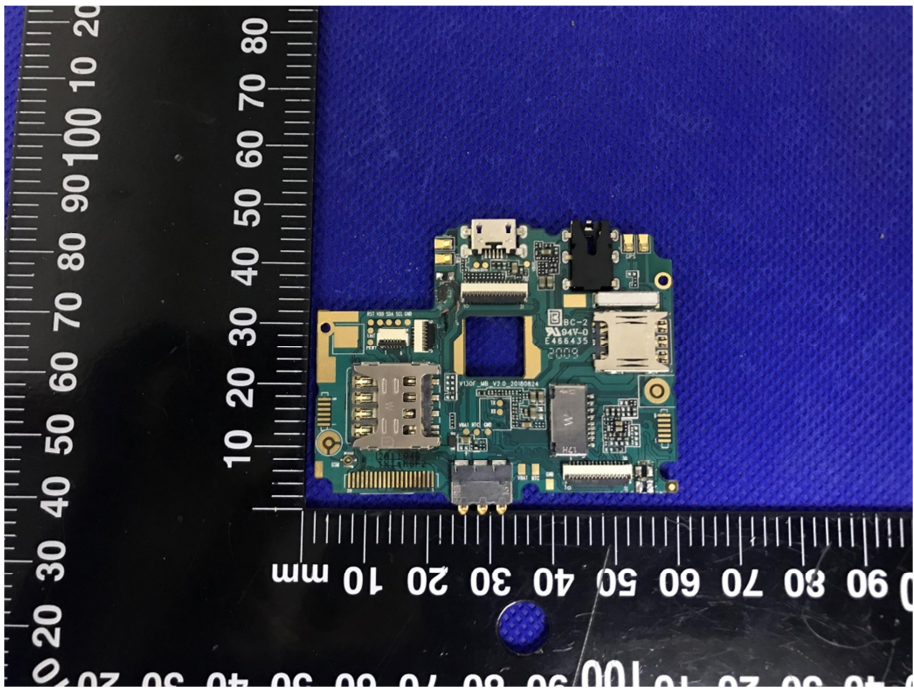
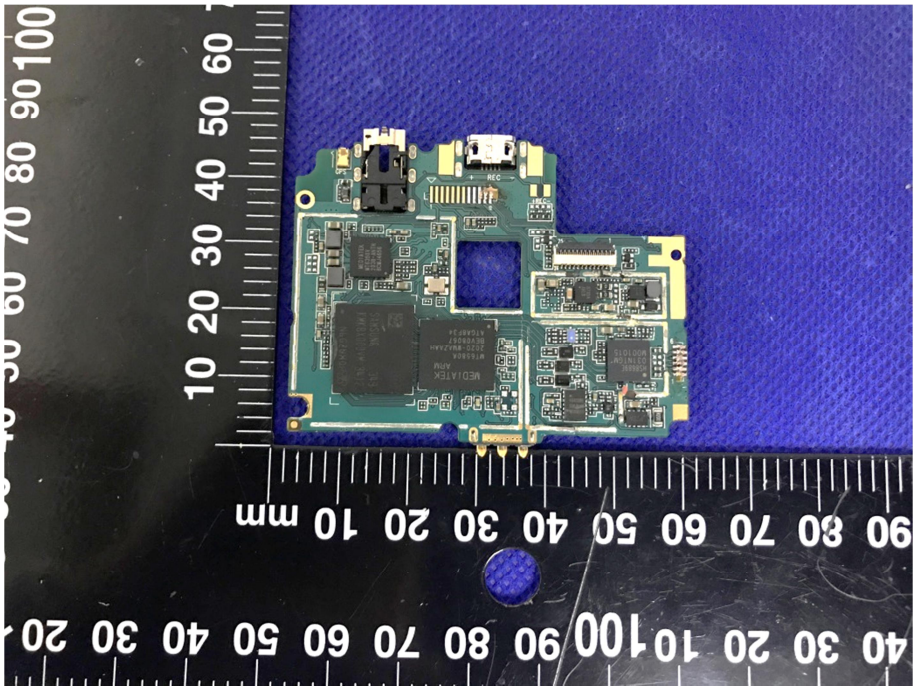


EXHIBIT 3 - EUT INTERNAL PHOTOGRAPHS

<p>EUT Housing and Board View 1</p>	
<p>EUT Housing and Board View 2</p>	



<p>Solder Board-Component View 2</p>	 <p>A photograph showing a small green PCB component with a yellow label that reads 'Y150M_SIB_V1.0_20200710'. The component is placed on a black surface with a white ruler for scale. The ruler shows markings from 0 to 100 mm. The background is a blue textured surface.</p>
<p>Solder Board-Component View 3</p>	 <p>A photograph showing a larger green PCB component with various components and a yellow label. The label contains text including 'WALTEK TESTING GROUP', 'P/N: WTX20X12093686W', and 'DATE: 20200710'. The component is placed on a black surface with a white ruler for scale. The ruler shows markings from 0 to 100 mm. The background is a blue textured surface.</p>

<p style="text-align: center;">Solder Board-Component View 4</p>	 A photograph of a green printed circuit board (PCB) component, labeled 'Solder Board-Component View 4'. The board is irregularly shaped and populated with various electronic components, including a large central chip, several smaller integrated circuits, and connectors. It is placed on a blue textured surface next to a black ruler with white markings. The ruler shows measurements in millimeters, with the board's width spanning approximately 100 mm and its height around 60 mm.
<p style="text-align: center;">Solder Board-Component View 5</p>	 A photograph of a green printed circuit board (PCB) component, labeled 'Solder Board-Component View 5'. This board is more rectangular than the one in View 4 and features a prominent large black chip in the center. Other components and connectors are visible. It is positioned on a blue textured surface next to a black ruler with white markings. The ruler indicates the board's width is approximately 100 mm and its height is about 60 mm.

