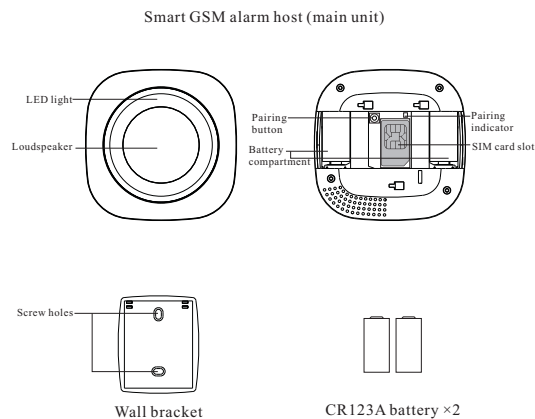


Description of the appearance and components' function



Overview

High sensitivity, using imported MCU and deep artificial intelligence algorithm, it can accurately capture the alarm sound from various smoke detectors on the market and the wireless signals from various disaster prevention accessories, and then inform users through SMS and telephone where the disaster or alarm have occurred, so that all current types of on-site disaster prevention detectors are upgraded to intelligent network alarms, improving the timeliness and intensity of disaster prevention and rescue greatly.

Features

The network can support 32 wireless disaster detection accessories.

Built-in 1677714 groups of RF wireless password combination.

Support for customizing the name of the guarded zone via mobile phone SMS

Support for configuring 8 alarm phone numbers.

Use two CR-123A batteries, standby for up to 5 years.

A text message will be sent to prompt the user to replace the battery, if low voltage occurs in the battery of the main unit and accessories.

Initial Configuration Guidance for the Main Unit

Insert an activated SIM card that has been topped up in the SIM card slot in the battery compartment of the main unit, and then load two CR123A batteries. By this time, the pairing indicator light next to the SIM card slot in the main battery compartment flashes, which means the main unit enters the state of searching network. When the above indicator light changes from flashing to going off, indicating that the networking is successful. And now, press the pairing button in the battery compartment to clear the configuration of the main unit before pairing. The specific operation is as follows: long press the pairing button in the battery compartment for 5 seconds, release the pairing button when the main unit makes 2 beeps, by this time, the configuration of the main unit is cleared and the wireless accessories can be paired. (All parts must be paired before using the set of devices)

Store alarm phone number

①Press the pairing button in the battery compartment, and the main unit will make a “beep” sound. ②Meanwhile, the pairing indicator and alarm indicator light up. ③Use the mobile phone to dial the SIM card number of the alarm main unit; ④The light will flash after the main unit receives the incoming call; ⑤Reply an SMS to the mobile phone. Repeat the following operations by using different mobile phone numbers, and up to 8 alarm phones can be stored.

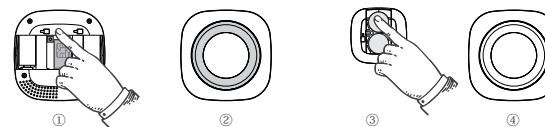


Change stored alarm phone number

Use the mobile phone number stored in the alarm main unit to edit the mobile phone number to be changed and send it to the alarm main unit. After receiving the message, the pairing light of the main unit will flash, and automatically reply a message of all the saved phone numbers, indicating that the phone number has been changed successfully. (Note: The number to be changed when changing the number must be a saved number and the TEL in front of the new phone number must be uppercase)

Add/clear wireless accessories

Smoke detector mate: ①Press the pairing button in the battery compartment of the main unit; ②The main unit will make a “beep” and the indicator will light up; ③Trigger the wireless accessory-reinstall batteries; ④The main unit will give 1 “beep”, and the indicator light will go out, indicating that the pairing is successful.



In the same manner, you can pair 32 accessories (if the main unit makes 2 “beeps” when loading the battery into the wireless accessory, indicating that the accessory has been paired with the main unit).

When the first paired wireless accessory alarms, it is displayed as SOS1 by default on the mobile phone text message.

When the second paired wireless accessory alarm, it is displayed as SOS2 by default on the mobile phone text message
And so on.

To clear the wireless accessory, press and hold the pairing button in the battery compartment for 5 seconds, then release the pairing button when the main unit makes 2 “beeps” and all the accessories paired with the main unit can be cleared.

Customizing accessories name

Smoke detector mate:

During the premise of pairing all the accessories

①Use the mobile phone to edit the SMS: SOS1 Kitchen (Note: “Kitchen” is a custom name) which is sent to the alarm main unit;

②The alarm main unit receives the text message and replies it back to the phone indicating it's customized successful.

You can customize other accessories' name by following up above process.

The normal working state can be entered after the above operation is completed.

Working principle

The smoke detector mate should be installed in the basement \kitchen \bedroom \warehouse and other places where fire may occur. The smoke detector mate should be installed next to the smoke detector. The smoke detector mate will send the alarm signal to the disaster control main unit according to an alarm sound made by the smoke detector when there is a fire in the monitored area. Then the disaster control main unit will send an alarm message to the stored alarm phone, and then it will dial all the stored alarm phones for warning. It will hang up automatically after the phone is connected. Then the system will enter the state before the alarm automatically after all the stored phones are dialed.

Technical Parameters

Smart GSM alarm host (main unit)

Power: DC 6V (two 3V CR123A battery)

Volume: 90dB

Standby current: 170uA

GSM gateway: 850 / 900 / 1800 / 1900MHz

Temperature: -10°C—+55 °C

working frequency: CE: 868.35MHz/FCC: 915MHz

KO-202X Smart GSM alarm host (main unit) Manual

FCC Warning

This device complies with part 15 of the FCC rules. Operation is subject to the following two conditions: (1) this device may not cause harmful interference, and (2) this device must accept any interference received, including interference that may cause undesired operation.

Changes or modifications not expressly approved by the party responsible for compliance could void the user's authority to operate the equipment.

NOTE: This equipment has been tested and found to comply with the limits for a Class B digital device, pursuant to part 15 of the FCC Rules. These limits are designed to provide reasonable protection against harmful interference in a residential installation. This equipment generates uses and can radiate radio frequency energy and, if not installed and used in accordance with the instructions, may cause harmful interference to radio communications. However, there is no guarantee that interference will not occur in a particular installation. If this equipment does cause harmful interference to radio or television reception, which can be determined by turning the equipment off and on, the user is encouraged to try to correct the interference by one or more of the following measures:

- Reorient or relocate the receiving antenna.
- Increase the separation between the equipment and receiver.
- Connect the equipment into an outlet on a circuit different from that to which the receiver is connected.
- Consult the dealer or an experienced radio/TV technician for help.

Radiation Exposure Statement

This equipment complies with FCC radiation exposure limits set forth for an uncontrolled environment. This equipment should be installed and operated with minimum distance 20cm between the radiator and your body.