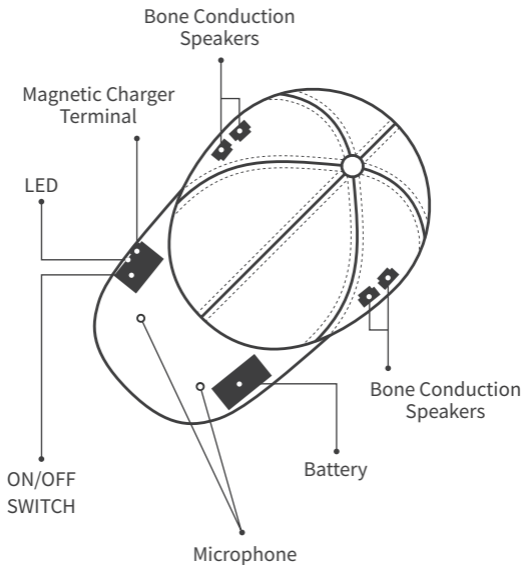


# ZERO1

USER MANUAL





## Components

ZEROi | Magnetic Charging Cable | User Manual

## **Please read the operation manual and use the product safely and correctly.**

- If any problems occur due to the use of other devices that are not provided by ZEROi LAB, the warranty is not applicable.
- If the user disassembles or reassembles the product through his or her own efforts, the product may not work properly and the warranty is also not applicable.
- The design, software, sound sources, and other components of ZEROi are licensed for limited use under the agreement between ZEROi LAB and its copyright holders. The use of these for other purposes, such as commercial use, is an infringement of copyright, and the user will be held responsible.
- If the software and hardware provided by ZEROi LAB are changed by the user, the product may malfunction or fail, and the warranty is not applicable.
- Since there is a possibility of interference during the operation of this product, ZEROi should not be used with devices related to life safety.
- Depending on the manufacturer or model of the other devices connected to ZEROi, some functions may be limited.

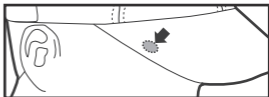
## **[Information on maintaining the water resistance function of the product]**

ZEROi is water resistance . For proper operation of the water resistance feature, please note the following when using. If you do not take the following into consideration, the product may be damaged.

- Please do not use for water sports such as diving, going underwater or swimming.
- Please be careful not to apply strong pressure or external shocks to the product since water resistance function can be damaged.
- Do not twist the product, and do not dry with equipment such as hair dryer, microwave, and dryer.
- Do not immerse the product directly in water or rinse it with high-pressured water.

\* ZEROi has been tested in a controlled environment and is water resistance in certain situations and conditions.

\* ZEROi can be used in environments of light rain or snow.



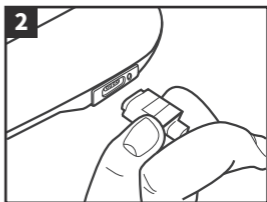
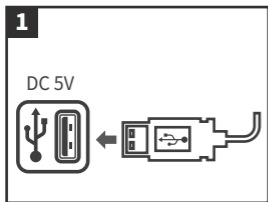
An arrow sticker is attached on the switch.

**ZEROi is operated with one button.**

Function	Button action	Operational state
Power On	Press for a long time for three seconds	Status of Power Off
Power Off	Press for a long time for three seconds	Status of Power on
Pairing	Keep pressing for more than 5 seconds after Power On	Status of Power Off
Play/Pause	Short pressing once	After pairing is completed, status of playing music
Accept Call	Short pressing once	After pairing is completed, status of getting a phone call
Decline Call	Press for a long time for three seconds	After pairing is completed, status of getting a phone call
End Call	Short pressing once	After pairing is completed, status of on the Phone
Redial	Short press twice consecutively	After pairing is completed, status of standby / Playing music

\*ZEROi does not provide separate volume control functions and buttons. Please use your device's volume control function.

\*Because of ZEROi's microphone band frequency, the recognition rate of voice recognition applications such as iPhone: Siri / Android: Google Now may be low.



## [To charge ZEROi]

1. Connect the exclusive magnetic cable to the certified USB charger you have.
2. Connect the charger terminals of exclusive magnetic cable to the ZEROi's charger terminals.

## [Checking the charge status]

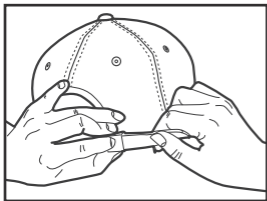
- Red LED light: currently charging
- Green LED light: charging complete

- \* When using for the first time, please use it fully charged.  
The product cannot be used while charging.
- \* The battery may become hot during the charging period. This phenomenon is normal and does not affect the life and performance of ZEROi.
- \* Be sure to use a certified DC 5V charger.  
Charging the battery with an unauthorized charger may cause the explosion of the battery or can damage the product.
- \* Be sure to use the exclusive magnetic charging cable provided as a component.  
If you do not use an exclusive charging cable, the product may not charge properly.

**Before using ZEROi, please read all information and warnings. The user is responsible if the product is damaged, overheated, or explodes due to improper use of this product.**

- Store and use it away from fire.
- Do not store it in strong sunlight or in a high-temperature environment.
- Do not store it in a humid place.
- Keep out of reach of children under 10.
- Do not throw or give extensive external shocks.
- When charging, do not place it on inflammable materials such as bedding or carpets.
- The appearance and specifications of the product may be changed without prior notice for performance improvement.
- Do not step on the product or bend it with excessive force. It may cause damage to the product.

## Performance improvement and precautions 06



**With adjustable straps, ZEROi can be worn on heads of various sizes.**

- For better bone conduction speaker performance, please adjust the rear adjustable strap to fit your head.
- Due to the features of the bone conduction speaker, when you use a high volume, the sound may escape to some extent. Please adjust the volume according to your environment.

Repair free of charge for one year from the date of purchase  
(Except for malfunctions evidently caused by the consumer)  
In case of an initially defective product, an exchange or refund  
can be processed only for the products received from  
warranty center within 10 days from purchase date.

## \* Exchange/refund not applicable

- If there is evidence of disassembly of the product.
- If the product is damaged by impact.
- Breakdown due to immersion or water inflow.
- \* It is not possible to return/refund/exchange after the consumer has opened the packaging.

Quality assurance | Returns | In the case of damage related the exchange, you may be compensated by the consumer dispute resolution standards according to the Framework Act on Consumers.

## [For Inquiries regarding the Warranty Policy]

- ZEROi lab service center: +82 2-2253-0901
- Address: #2 4th floor, Dongseng building, Jongno 383, Jongno-gu, Seoul, Korea
- ZEROi lab e-mail: admin@zeroilab.com

ZEROi Lab guarantees the following products in accordance with the Consumer Dispute Resolution Standards (Fair Trade Commission Notice). Please contact the place of purchase if the product is not working properly.

Product name		Model name	
Date of purchase	Y M D	S/N	
Purchase location		Selling price	

## Service free of charge

If the product fails under normal use within one year of the warranty period, you will be eligible for a free service.

## Paid service

If any of the following failures occur within one year of the warranty period, you may be eligible for a paid service.

- In case of failure due to inattention of the consumer or improper repair/modification
- In case of failure due to the use of wrong voltage
- In case of failure due to not observing precautions in the instruction manual
- In case of failure due to natural disasters (lightning, fire, damage from sea wind, flood damage, freezing)
- Expendable parts (batteries, speakers, cables, and other attachments) have reached the end of their life



Speakers : Bone Conduction Speaker 1W X 4ea

Battery : 3.7V / Li-Polymer 500mAh

Full Charge Time : 2 Hours

Continuous Play Time : 5 Hours

Weight : 4.9oz / 140g

Water Resistance : IP65

Size : Free

Febric : Oil Coated Cotton / Cotton

\*This device can be operated in at least one Member State without infringing applicable requirements on the use of Radio Spectrum.

Radio Frequency Range : 2402MHz ~ 2480MHz

Max. RF output power : 4.90 dBm

## FCC Statement

This device complies with Part 15 of the FCC Rules. Operation is subject to the following two conditions:

- 1) this device may not cause harmful interference, and
- 2) this device must accept any interference received, including interference that may cause undesired operation of the device.

This equipment has been tested and found to comply with the limits for a Class B digital device, pursuant to part 15 of the FCC Rules. These limits are designed to provide reasonable protection against harmful interference in a residential installation. This equipment generates, uses and can radiate radio frequency energy and, if not installed and used in accordance with the instructions, may cause harmful interference to radio communications. However, there is no guarantee that interference will not occur in a particular installation. If this equipment does cause harmful interference to radio or television reception, which can be determined by turning the equipment off and on, the user is encouraged to try to correct the interference by one or more of the following measures:

- Reorient or relocate the receiving antenna.
- Increase the separation between the equipment and receiver.
- Connect the equipment into an outlet on a circuit different from that to which the receiver is connected.
- Consult the dealer or an experienced radio/TV technician for help.

Changes or modifications not expressly approved by the party responsible for compliance could void the user's authority to operate the equipment.

This equipment complies with FCC radiation exposure limits set forth for an uncontrolled environment.



[WWW.zeroilab.com](http://WWW.zeroilab.com)