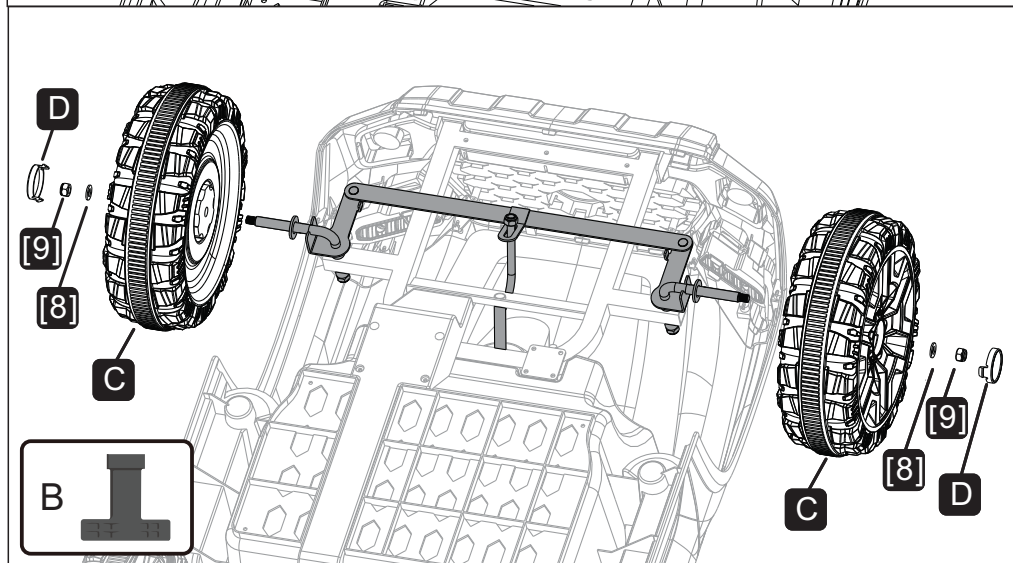
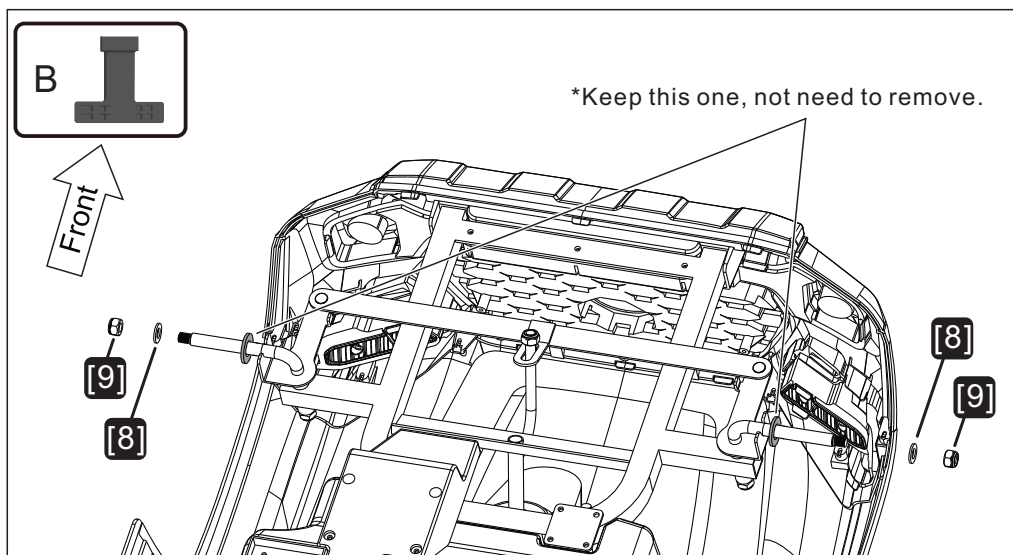


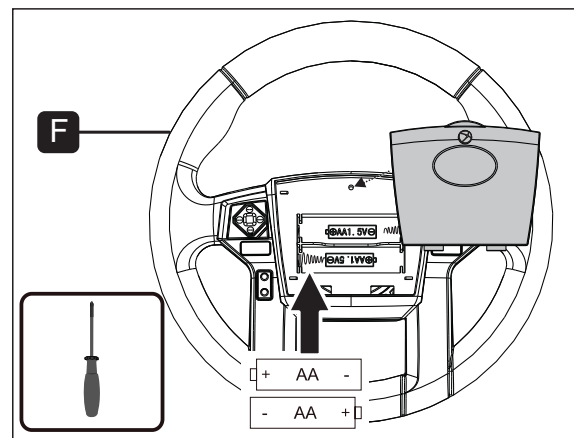
## Step 2: Install front axle.

1. Remove the nut [3] from the steering axle [4] with B (M8 wrench).
2. Remove the nut [5] from the E (front axle) with B (M8 wrench)
3. Insert E (front axle) into the square tube [6], (\* Note: [4] steering rod needs to go through the [7] hole of front axle), and secure E (front axle) with two [5] M8 nuts. Replace one [3] M8 nut on [4] (steering axle).



## Step 3: Install front wheel.

1. Remove the nut and washer from the front axle with B (M8 spanner).
2. Install [C] (wheel), Replace [8] (washer), [9] (M8 nut) on A (front axle), and install D (wheel cover) on C (wheel).

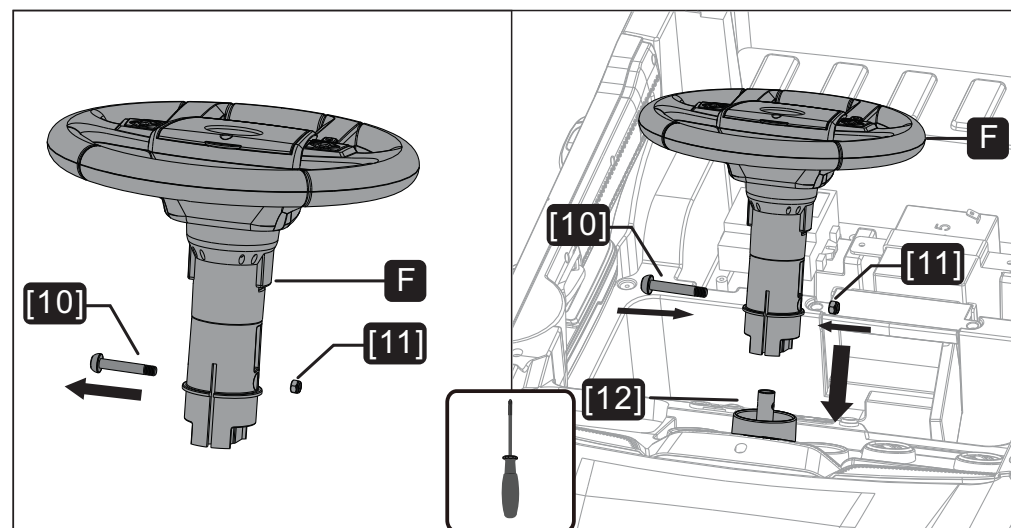


## Step 4: Install steering wheel battery

Firstly use a screwdriver to unscrew the steering wheel cover in counterclockwise, then install 2 AA batteries as shown, finally cover the cover and tighten the screws in clockwise.

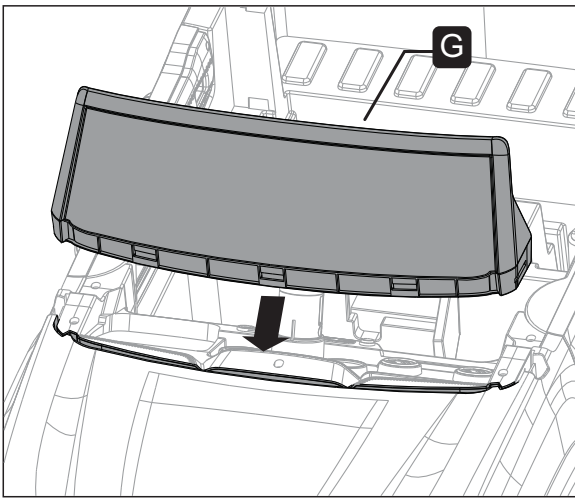
## ⚠ WARNING!

1. All batteries should be inserted in the correct polarity.
2. Non-rechargeable battery cannot be recharged
3. Take out and properly deal with the dead battery. To avoid injury, please keep kids away from the battery.
4. The direct contact between the positive and negative terminals may result in fire or explosion. Avoid direct connect between the terminals.
5. Do not mix old and new batteries. DO not mix alkaline, standard (carbon-zinc), or rechargeable (nickel-cadmium) batteries.
6. Only an adult who has read and understood the safety warnings can recharge the battery.



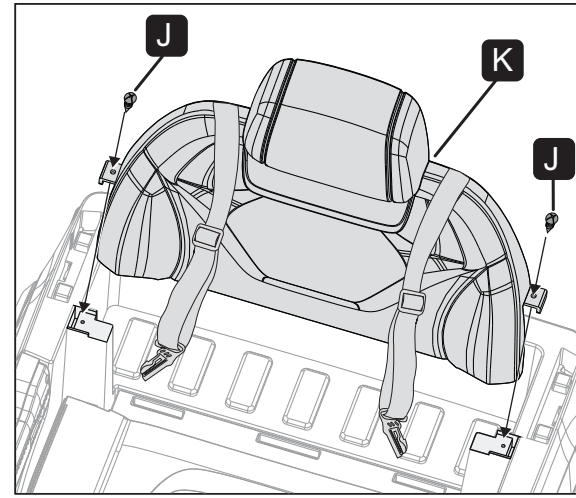
## Step 5: Install steering wheel

1. Take off the [10] screw and [11] nut from the steering wheel.
2. Install the F (steering wheel) into [12], then tighten the [10] screw and [11] nut to fix the F.



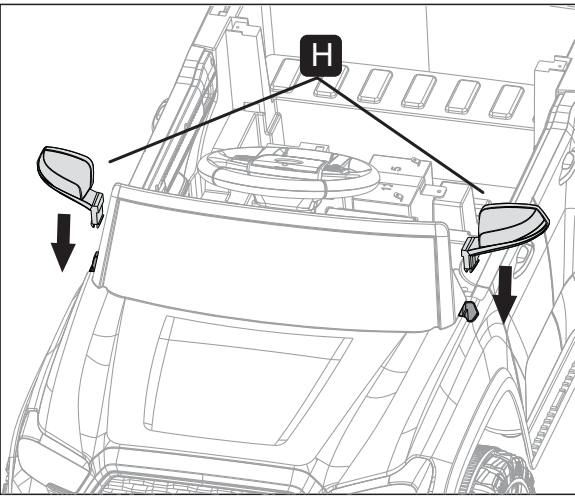
**Step 6: Install the wind deflector**

Install the G( wind deflector ) to the car body as show in figure.



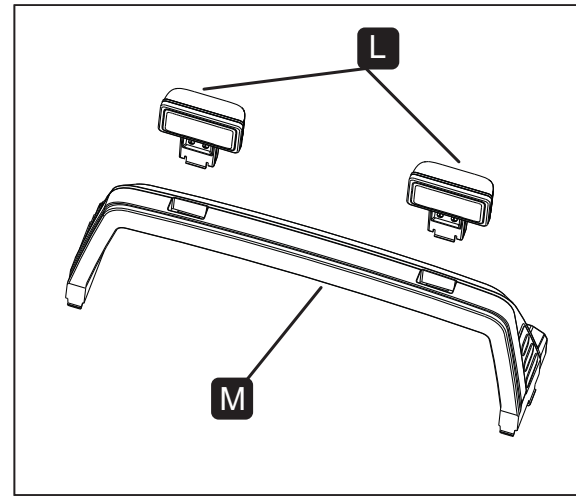
**Step 9: Install the back rest**

Use 2pcs J(self-tapping screw) to install the K(back rest) as show in figure.



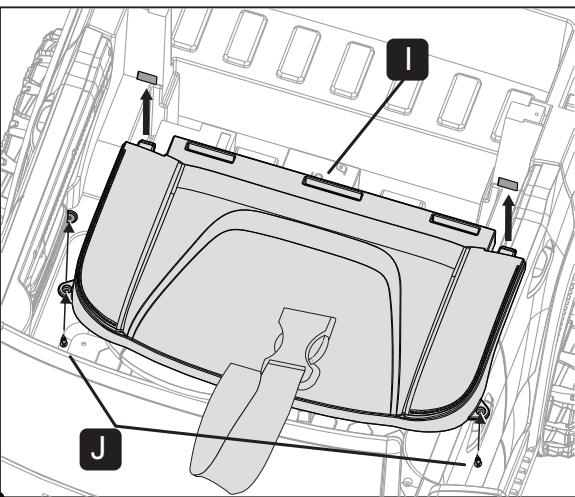
**Step 7: Install the rear view mirror**

Install the H( rear view mirror ) to the car body as show in figure.



**Step 10: Install the rear taillight**

Install 2pcs L( rear taillight) to M( taillight bracket) as show in figure.



**Step 8: Install the seat**

Use 2pcs J(self-tapping screw) to install the I(seat) as show in figure. (\* Opening the door is more helpful for the installation)

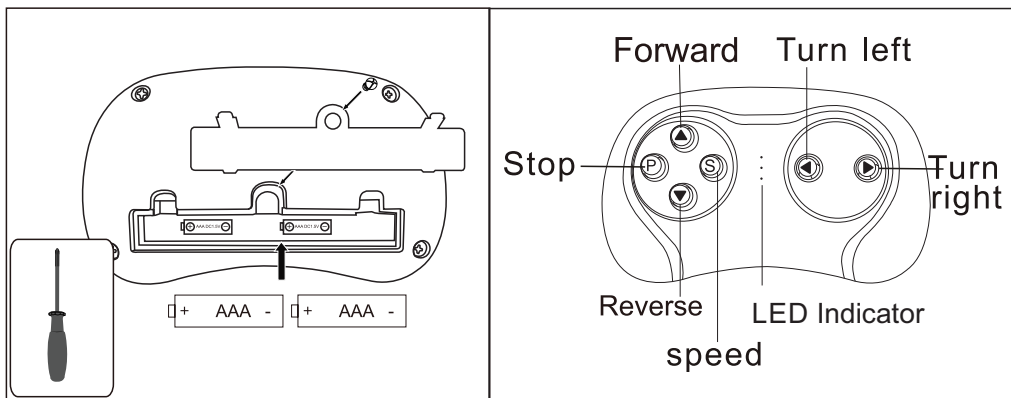


**Step 11: Install the rear taillight bracket**

Install taillight bracket to car body as show in figure.

## Direction for use

### 1. The installation and replacement of the batteries in the remote control:



Use a screwdriver to remove the battery cover of the remote control, insert two AAA 1.5V dry batteries in correct polarity. Close the battery cover and fix it with the screw. (Battery replacement also according to the above steps)

#### ⚠ WARNING!

- 1.All batteries should be inserted in the correct polarity.
- 2.Non-rechargeable battery cannot be recharged
- 3.Take out and properly deal with the dead battery. To avoid injury, please keep kids away from the battery.
- 4.The direct contact between the positive and negative terminals may result in fire or explosion. Avoid direct connect between the terminals.
- 5.Do not mix old and new batteries. DO not mix alkaline, standard(carbon-zinc),or rechargeable(nickel-cadmium) batteries.
- 6.Only an adult who has read and understood the safety warnings can recharge the battery.

### 2. Matching the frequency of car and remote control

1. Turn off the Power Switch on the car.
2. Remove the battery cover on the Remote Control and put in 2 AAA battery, the three LED indicators will flash.
3. Turn on the Power Switch on the car, when the LED indicators stop flashing and 2 of them are on, matching successes.
4. Once the matching is made, there is no need to match code again only if the battery is replaced.
5. The Remote Control will enter a sleep mode if not used for a long time and the LED indicators will be off. Press any buttons to wake up the Remote Control, and it can be used normally.

Button Description: ▲: forward ▼: reverse ◀: turn left ▶: turn right  
S: Speed “P” stop button: Press this button, the vehicle will stop immediately and indicator flash, vehicle has no move function either by controller or manual control from the vehicle. Press the button again, indicator change to solid light, vehicle back to operation mode.

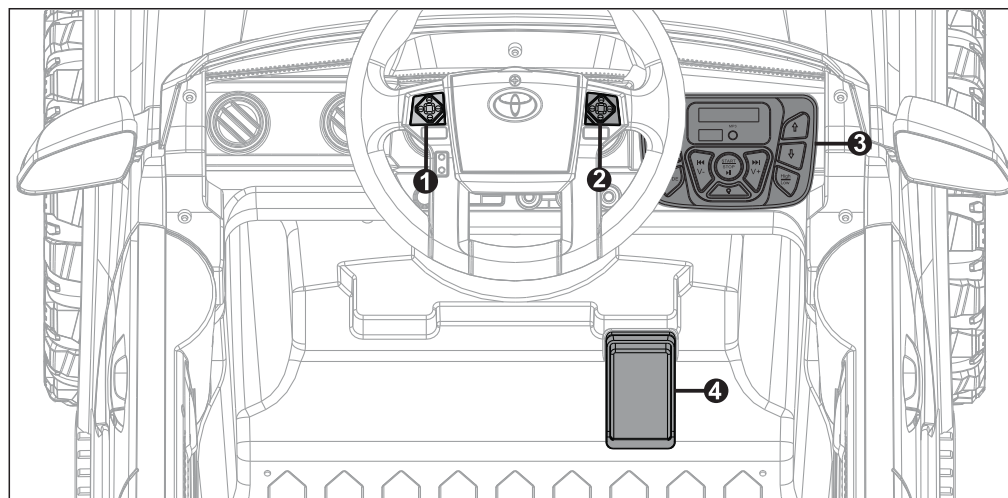
### Remote control operating instruction

Remote control is priority (when the car is in Remote control, the remote control personnel can control the car forward and backward, high/Low speed, steering and other functions, the driver CAN NOT operate the car). Press the ▲ forward button, the car goes forward. Press ▼ reverse button, the car goes reverse. “P” stop button: Press this button, the vehicle will stop immediately and indicator flash, vehicle has no move function either by controller or manual control from the vehicle. Press the button again, indicator change to solid light, vehicle back to operation mode. Press the turn left button car turn left, Press the turn right button car turn right;(Note:The remote control turning button needs pressing more than once while turning, otherwise it will automatically return to the straight line.)The S button is speed button, one light on is low speed, two lights on for intermediate speed, three lights on for high speed.

#### ⚠ WARNING!

The remote control is not a toy. It is for the adult use only, and should not be used by a child. A close adult supervision is always required. Reception range may change significantly with weather, battery, and other environmental conditions.

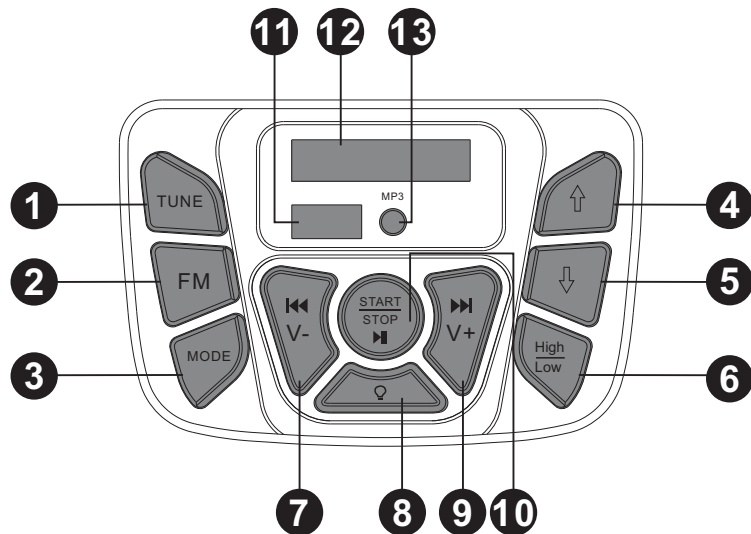
### 3. Instruction of each switch and function button



- 1 and 2. Horn Button: Press the button to horn.
- 3.Control board.
- 4.Foot pedal switch: Step on the foot pedal switch, the car will move forward;Loosen the pedal, the car will stop.



## 4-1. Instruction of Control board



1. FM radio search: In FM mode, press this button will search the FM channel.
2. FM station: Press this button to enter the FM mode.
3. Press the button to toggle between start sound mode, Media player port mode and AUX mode.
4. Forward: Press forward button, step on the foot switch the car will move forward, loosen the pedal the car will stop. When press the key, it prompts "forward".
5. Reverse: Press Reverse button, step on the foot switch the car will move Reverse, loosen the pedal the car will stop. When press the key, it prompts "Please pay attention to reversing".
6. High/Low speed: Power on, by default, the forward speed is high speed, press the High/Low button can change to low speed, press this button again, can change to high speed. For backward, there is only one speed, the high/Low button is invalid. When press the key, it prompts "high speed / Low speed".
7. ◀◀ /V- Previous /VOL down: short press to play the last channel, long press to lower the volume.
8. light switch: Power on, by default, the light is on, press the button to turn off the light. When press the key, it prompts "Light on / Light off".
9. ▶▶ /V+ Next / VOL up: Next channel / Volume up: short press to play the next channel, long press to increase the volume.
10. START/STOP / ⏸ : Long press to Turn on or turn off the power; When the music or radio is on, short press can stop it, short press again can restart play it.
11. Media player port: Insert flash driver will play the music inside. Only MP3 mode is supported.

12. Voltage display screen: The value on the display be used to determine whether the battery needs to be charged.
13. AUX connector: Connect with other removable device to play audio file valid.

## 4-2. Direction for use

1. START/STOP / ⏸ / ▶▶ : Long press button 10 (START/STOP / ⏸ / ▶▶ button) for 2-3 seconds, will turn on the power, light the screen 12 and make a starting sound, after that, it can operate normally; Long press button 10 (START/STOP / ⏸ / ▶▶ button) for 2-3 seconds, will turn off the power.
2. FM radio function: press button 2 (FM button) to enter the FM mode; then press button 1 (TUNE button) will search the FM channel, This process takes a while to automatically search the station and save. When the search is complete, the car will automatically play the first radio station. Short press button 9 (▶▶ /V+ button), will play the next channel; short press button 7 (◀◀ /V- button), will play the last channel; Long press button 9 (▶▶ /V+ button), will increase the volume; long press button 7 (◀◀ /V- button), will lower the volume; short press button 10 (START/STOP / ⏸ / ▶▶ button), can stop playing, short press this button again, can restart play it.
3. Media player port: : insert flash driver into 11 (Media player port: ), will automatically play the music inside. Short press button 9 (▶▶ /V+ button), will play the next music; short press button 7 (◀◀ /V- button), will play the last music; Long press button 9 (▶▶ /V+ button), will increase the volume; long press button 7 (◀◀ /V- button), will lower the volume; short press button 10 (START/STOP / ⏸ / ▶▶ button), can stop playing, short press this button again, can restart play it.
4. AUX player function: Insert one end of the audio cable into 13 (AUX connector), insert the another end into mobile phone, MP3, MP4, etc. Play the audio in the device, the sound will come out from the car. Long press button 9 (▶▶ /V+ button), will increase the volume; long press button 7 (◀◀ /V- button), will lower the volume; short press button 10 (START/STOP / ⏸ / ▶▶ button), can stop playing, short press this button again, can restart play it. Play progress is not affected by pauses. Under AUX mode, the last song/the next song cannot be switched in central control, can only be switched on mobile phone, MP3, MP4 or other devices.
5. Switch between Music, flash driver and AUX: If insert flash driver or AUX, press button 3 (MODE button) can switch between different play modes ( Music, flash driver, AUX ).

6. Forward/ reverse, and high/ low speed function: Power on, by default, the forward speed is high speed, press button⑥(High/low button) can change to low speed, press this button again, can change to high speed. Press button⑤(↓ button), change to reverse mode, under this mode, there is only one speed, the high/low button is invalid. Press button④(↑ button), can change to forward mode.
7. Light button: Power on, by default, the light is on, press this button(💡) can turn off the light. Press again, can turn on the light.

## 5. Operation guide for Manual control (Forward, Reverse ):

Driver sit down and fasten the seat belt. Long press the Start button, the display will light up, the car will play a start sound (2-5 seconds). Press the forward button and step on the foot switch, the car will move forward, release the foot switch, the car will stop. Press the reverse button and step on the foot switch, the car will move backward, release the foot switch, the car will stop. Long press the Start button again to turn off the power.

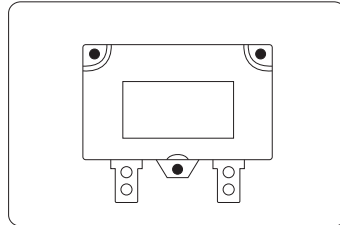
## 6.The illustration of High/Low Speed

Power on, by default, the forward speed is high speed, step on the foot switch, the car will move forward fast, release the foot switch, the car will stop. Press the high/low speed button can change to low speed, step on the foot switch, the car will move forward slowly, release the foot switch, the car will stop. Press the high/low speed button again will change to high speed.

\* **ONLY one speed for reverse, the high/low switch can not control the reverse speed. Everytime when power on, by default, the car will move forward in high speed.**

## 7.Instructions of the recoverable fuse

Resettable fuse: when the current exceeds a certain rating, the recoverable fuse will automatically cut off the power supply for 5-60seconds, then the current will be resupplied.



### ⚠️ WARNING

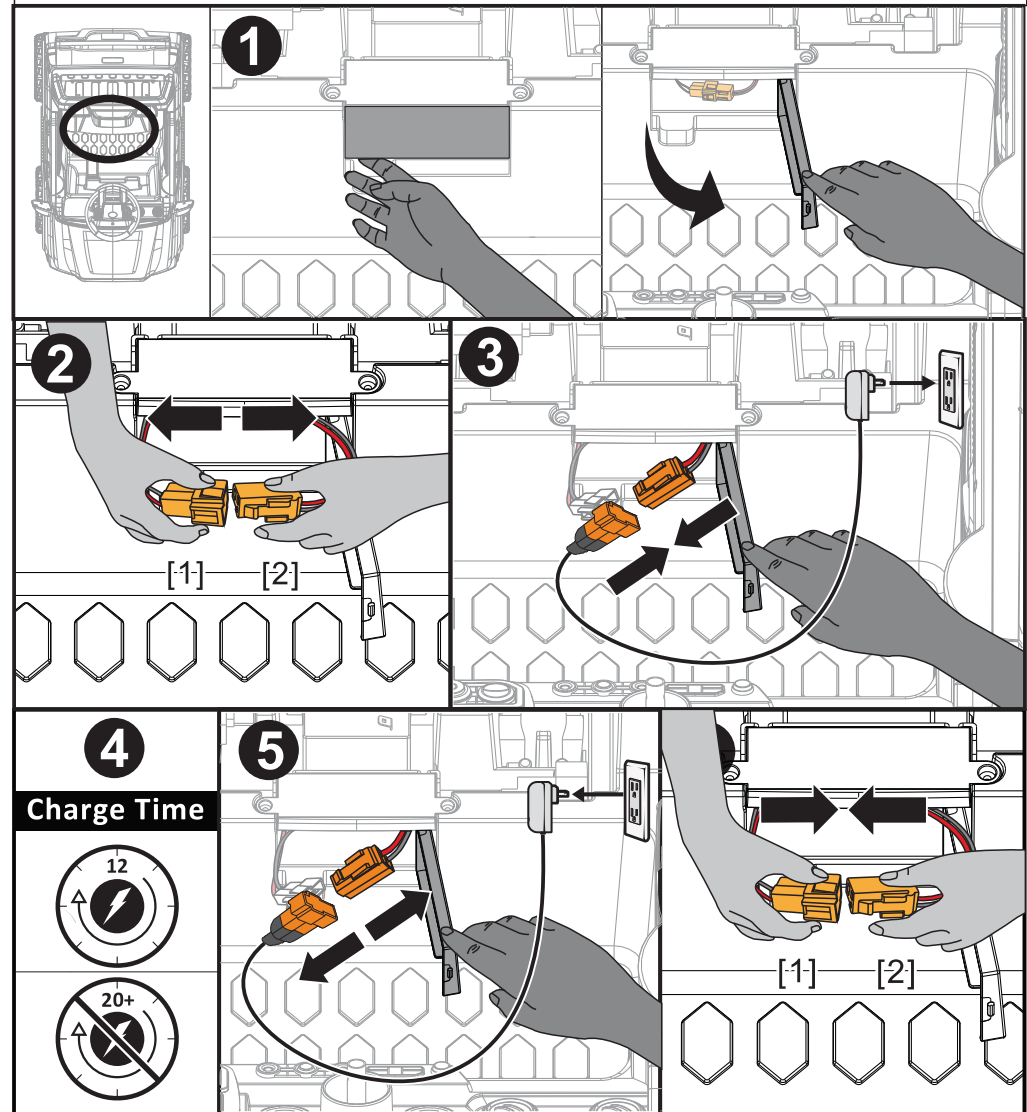
**RISK OF FIRE.** Do not bypass fuse. This may overload and damage the electrical system. Replace only with original size and type.

## 8.Charging instructions.

### WARNING!

Please plug wall charger directly into a wall outlet. Do not use an extension cord.

**Low power protection:** if the voltage below 8V lasting for 1 second, it will be prompted "Battery is low" Please recharge in time". After the 1st alarm, if the voltage is still below 8v, give a second alarm after lasting for 10 seconds "Battery is low" Please recharge in time". After the alarm, if the voltage is still below 8v, Alarm again after lasting for 10 seconds: "Low voltage, will shut down". After several alarms, if the voltage is still below 8v, it will automatically shutdown after lasting for 10 seconds.



When the battery is low, please charge it immediately. 1. Please find and open the Charging hole cover as shown in figure. 2. Press the [2] hook to disconnect the power supply terminal. 3. Connect the charger terminal to the power supply terminal. 4. It can be fully charged within 12 hours (note: Charge it for no more than 20 hours). 5. Firstly please unplug the charger plug out of the socket, then unplug the charger terminal. 6. Connect the power supply terminal, and close the Charging hole cover. (note: this toy cannot be operated, under charging and should be charged by adults)

# Troubleshooting

Fault type	Reason analysis	Trouble elimination methods
The motor does not rotate	<ol style="list-style-type: none"> <li>1. Is the fuse overloaded? (under the seat)</li> <li>2. The pedal switch connector is good?</li> <li>3. The welding of motor electric terminal is good?</li> <li>4. The connector of the motor wire is good.</li> <li>5. Remove the motor's plug-in, change to connect battery directly, then check if it rotate or not.</li> </ol>	<ol style="list-style-type: none"> <li>1. Yes, the fuse cuts off the power automatically by 5-60 seconds, then restart; No, check next reason analysis</li> <li>2. No, repair foot switch ; Yes, check next reason analysis</li> <li>3. No, weld the terminal wire ; Yes, check next reason analysis</li> <li>4. No, plug in the plug-in ; Yes, check next reason analysis</li> <li>5. Still no rotation, change the motor; If rotates, it means driving circuit board needs professional maintenance, please contact with agent</li> </ol>
Only move frontwards, or only move backwards	<ol style="list-style-type: none"> <li>1. Check the frontward/backward switch, check the connector is good or not by multimeter</li> <li>2. Check the drive line cycle of frontward/bckwards is workable or not?</li> </ol>	<ol style="list-style-type: none"> <li>1. No, change the frontward /backward switch;</li> <li>Yes, check next reason analysis</li> <li>2. No, connect the line; Yes, it means driving circuit board needs professional maintenance, please contact with agent</li> </ol>
slow speed	<ol style="list-style-type: none"> <li>1. Check the battery voltage is ok or not.</li> <li>2. Connect the motor (including the driving gearbox) to the battery, then check the speed can be accelerated or not.</li> </ol>	<ol style="list-style-type: none"> <li>1. No, charger the battery ; Yes it's ok, check next reason analysis</li> <li>2. No, check next reason analysis ; Yes, it means driving circuit board needs professional maintenance, please contact with agent</li> </ol>
The battery can not be recharged	<ol style="list-style-type: none"> <li>1. The battery connector fall off or loosened.</li> <li>2. The charger has a slight heat when it is charged</li> </ol>	<ol style="list-style-type: none"> <li>1. Yes, reconnect it, No, check next reason analysis</li> <li>2. No, the charger is broken, replace it</li> </ol>
When car is moving, the sound and light are useless	<ol style="list-style-type: none"> <li>1. check the sound/light switch is ok or not.</li> <li>2. check the electric wire connection (from battery to headstock) is good or not?</li> </ol>	<ol style="list-style-type: none"> <li>1. No, replace the switch; Yes, check next reason analysis</li> <li>2. No, reconnect; Yes, check next reason analysis</li> </ol>
When wheel running, the car does not move	<ol style="list-style-type: none"> <li>1. check the driving wheel can be rotated or not?</li> <li>2. Check the gearbox, if any gear is damaged?</li> </ol>	<ol style="list-style-type: none"> <li>1. Yes, lay the wheel to the ground; No, checks the next reason analysis</li> <li>2. Yes, replace the gear box; No, checks the next reason analysis</li> </ol>
Car is unstable, moving on and off	<ol style="list-style-type: none"> <li>1. Does the driver exceed the maximum load weight?</li> <li>2. Does the driver ride on the rugged road?</li> <li>3. Check the wheel can rotate freely?</li> </ol>	<ol style="list-style-type: none"> <li>1. Yes, should follow the instruction, the car unsuitable for exceed maxweight; No, check the next reason analysis</li> <li>2. Yes, should follow the instruction, ride on the flat cement road ; No, check the next reason analysis No, Troubleshooting wheel and axle</li> </ol>

## FCC Warning Statement

Changes or modifications not expressly approved by the party responsible for compliance could void the user's authority to operate the equipment. This equipment has been tested and found to comply with the limits for a Class B digital device, pursuant to Part 15 of the FCC Rules.

These limits are designed to provide reasonable protection against harmful interference in a residential installation. This equipment generates uses and can radiate radio frequency energy and, if not installed and used in accordance with the instructions, may cause harmful interference to radio communications. However, there is no guarantee that interference will not occur in a particular installation. If this equipment does cause harmful interference to radio or television reception, which can be determined by turning the equipment off and on, the user is encouraged to try to correct the interference by one or more of the following measures:

- Reorient or relocate the receiving antenna.
- Increase the separation between the equipment and receiver.
- Connect the equipment into an outlet on a circuit different from that to which the receiver is connected.
- Consult the dealer or an experienced radio/TV technician for help.

This device complies with part 15 of the FCC Rules. Operation is subject to the following two conditions: (1) This device may not cause harmful interference, and (2) this device must accept any interference received, including interference that may cause undesired operation.

The device has been evaluated to meet general RF exposure requirement. The device can be used in portable exposure condition without restriction.