

Product Number: 2.4G Antenna L=150mm MHF

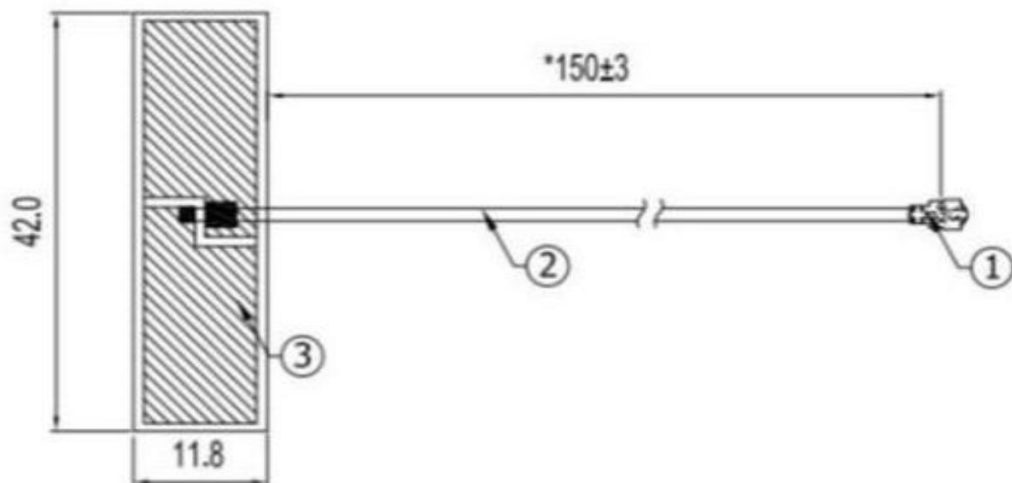
Product Name : LY-P05-150 (HUAYAO)

Manufacture: Dongguan Huayao Electronic Technology Co., Ltd.

101, Floor 1, No. 5, Third Lane, Delong Road, Shatou Community, Chang'an Town, Dongguan City

Index:

- 1. Reliability Testing**
- 2. Specification**
- 3. S Parameter Test Data**
- 4. Antenna Radiation Pattern**



Product Number: 2.4G Antenna L=150mm MHF

Product Name : LY-P05-150 (HUAYAO)

1. Reliability Testing

Test Item	Procedure	Requirement
1. Visual inspection and Dimension Check	Applicable methods using x5 magnification	follow specification
2. Rapid Changing of Temperature	-40°C (30minutes) to 90°C (30minutes); 24 cycles	After 2 hours recovery: 1. no visible damage 2. Freq. Tol.: < ±5%
3. Damp Heat	24 hours at 60°C; 90 ~ 95% RH	After 2 hours recovery: 1. no visible damage 2. Freq. Tol. : < ±5%
4. Endurance	24 hours at 90°C	After 2 hours recovery: 1. no visible damage 2. Freq Tol.: < ±5%

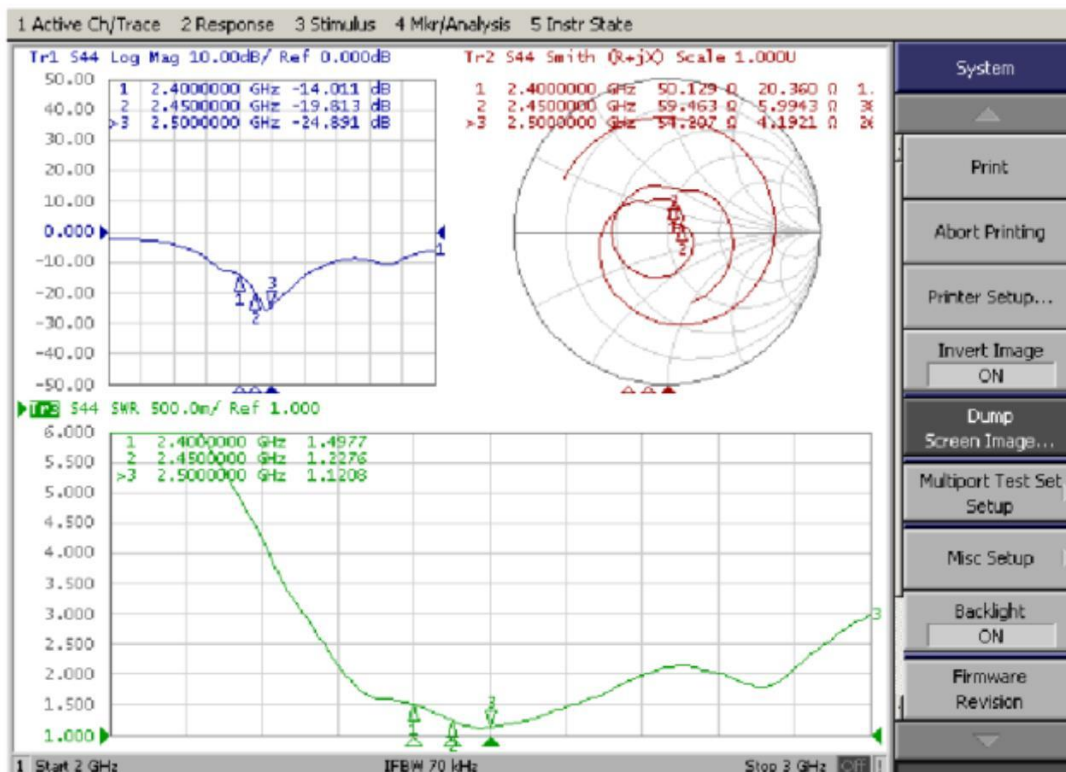
Product Number: 2.4G Antenna L=150mm MHF

Product Name : LY-P05-150 (HUAYAO)

2. Specification

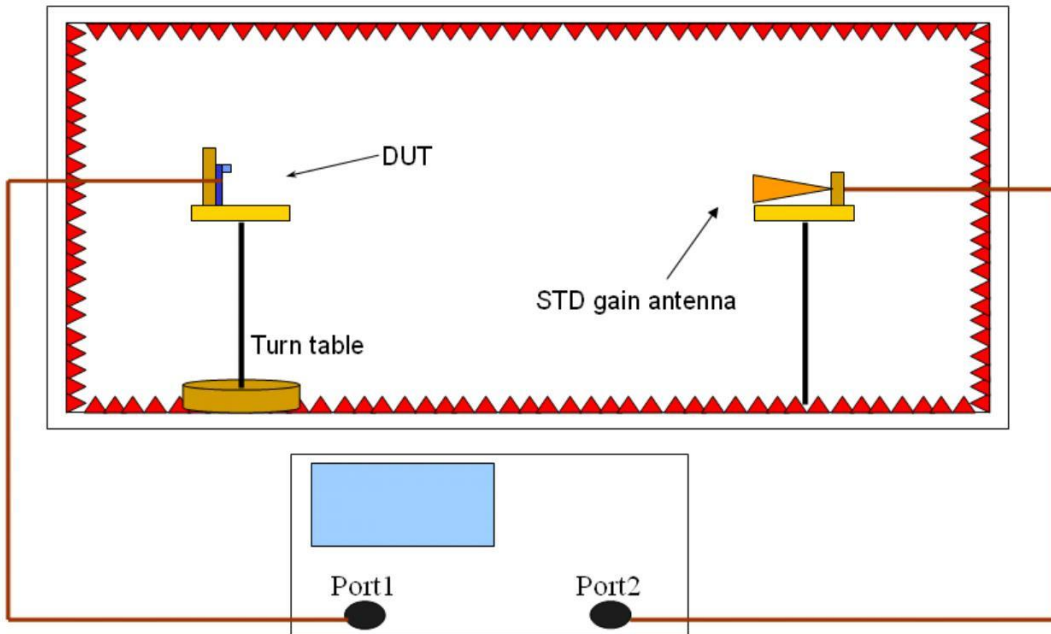
A. Electrical Characteristics	
S.W.R.	2400-2500MHz:≥2.0
Antenna Gain	2 ±0.5 dBi
Impedance	50 Ohm
B. Material	
Material of Radiator	Cu (Plated)
Connector Type	IPEX
C. Environmental	
Operation Temperature	- 30 °C ~ + 85 °C
Storage Temperature	- 30 °C ~ + 85 °C

3. S Parameter Test data

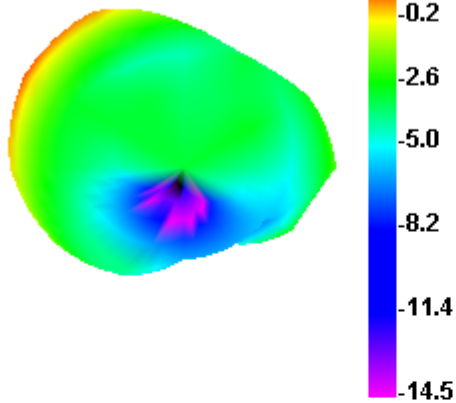


Product Number: 2.4G Antenna L=150mm MHF

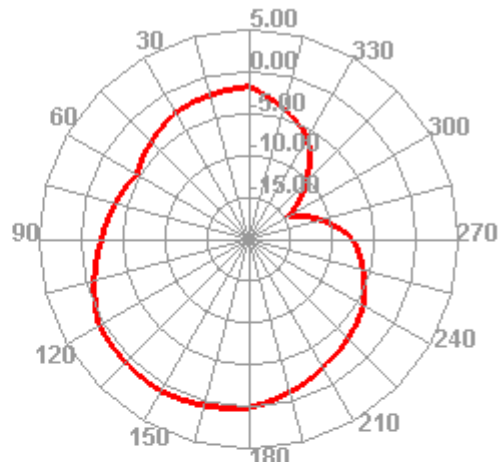
Product Name : LY-P05-150 (HUAYAO)



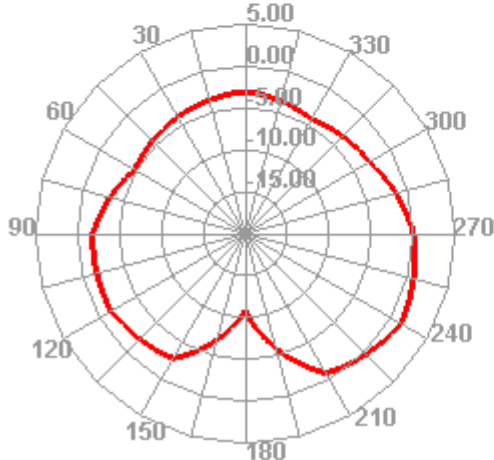
2400.000MHz



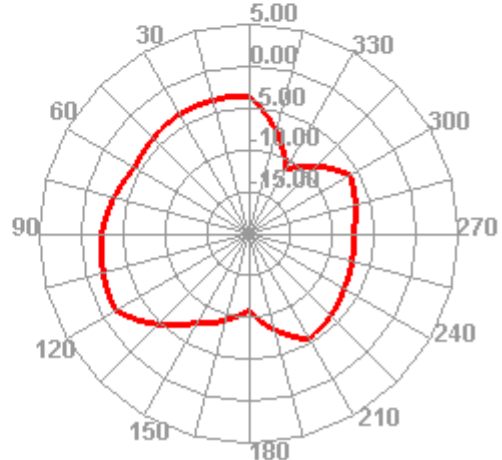
2400.000MHz H



2400.000MHz E1



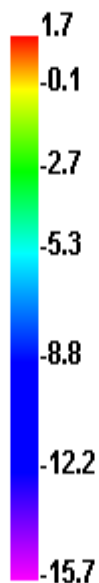
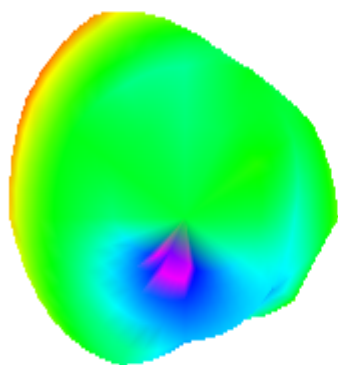
2400.000MHz E2



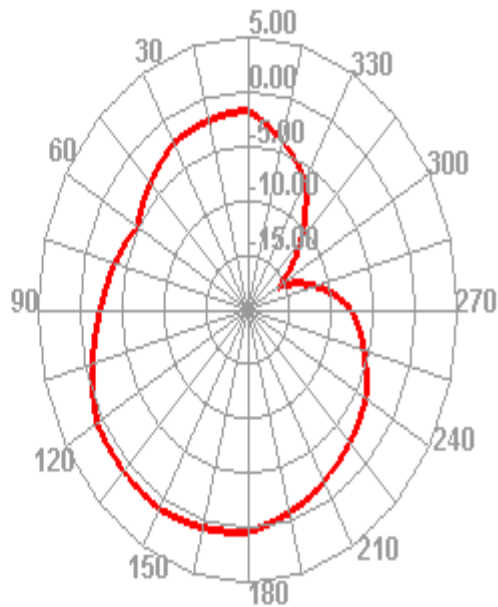
Product Number: 2.4G Antenna L=150mm MHF

Product Name : LY-P05-150 (HUAYAO)

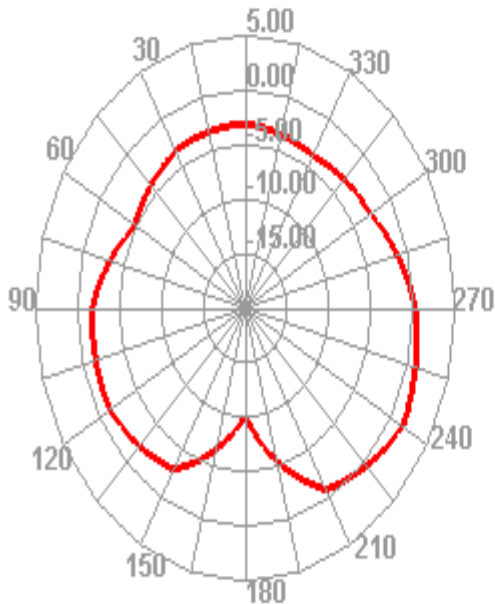
2410.000MHz



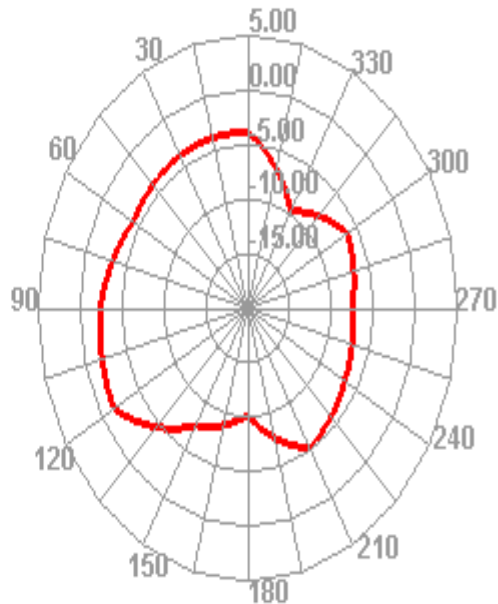
2410.000MHz H



2410.000MHz E1



2410.000MHz E2

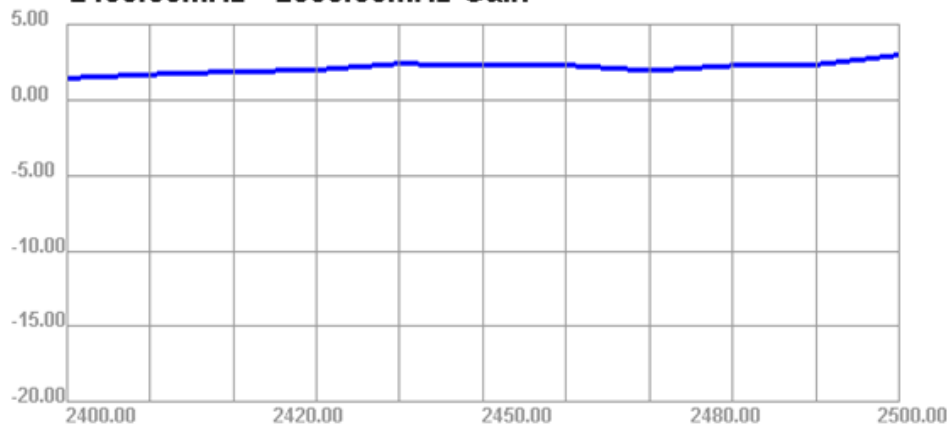


Product Number: WiFi Antenna L=150mm MHF

Product Name : LY-P05-150 (HUAYAO)

Freq (MHz)	Effi (%)	Effi (dB)	Gain (dBi)	Gain (dBd)	Passive Test For 2.4G		Max (dB)	Min (dB)	Atternut Hor	Atternut Ver
					UHS (%)	DHS (%)				
2400	48.83	-3.11	1.43	-0.72	20.536	28.298	1.43	-14.55	49.83	49.59
2410	50.4	-2.98	1.68	-0.47	21.14	29.261	1.68	-15.73	48.7	48.55
2420	50.98	-2.93	1.86	-0.29	21.16	29.819	1.86	-16.54	48.83	48.55
2430	52.07	-2.83	1.98	-0.17	21.129	30.94	1.98	-17.62	48.71	48.4
2440	56.47	-2.48	2.39	0.24	22.547	33.923	2.39	-18.22	48.65	48.47
2450	54.25	-2.66	2.26	0.11	21.495	32.755	2.26	-19.13	48.29	48.09
2460	55.71	-2.54	2.29	0.14	21.782	33.93	2.29	-19.38	48.49	48.13
2470	52.21	-2.82	1.93	-0.22	20.216	31.993	1.93	-19.14	48.66	48.41
2480	57.52	-2.4	2.26	0.11	22.373	35.144	2.26	-18.45	48.92	48.72
2490	57.95	-2.37	2.32	0.17	22.656	35.297	2.32	-18.52	49.17	48.94
2500	68.48	-1.64	2.96	0.81	26.529	41.946	2.96	-18.39	49.39	49.31

2400.00MHz - 2500.00MHz Gain



2400.00MHz - 2500.00MHz Efficiency

