

2. PRODUCT LABELING

BioTillion Wireless I/O Module
Model No.: CSI-RM650
FCC ID: 2ARIX-CSI-RM650

This device complies with part 15 of the FCC Rules. Operating is subject to the following two conditions: (1) This device may not cause harmful interference, and (2) this device must accept any interference received, including interference that may cause undesired operation.

Figure 2.1 ID Label

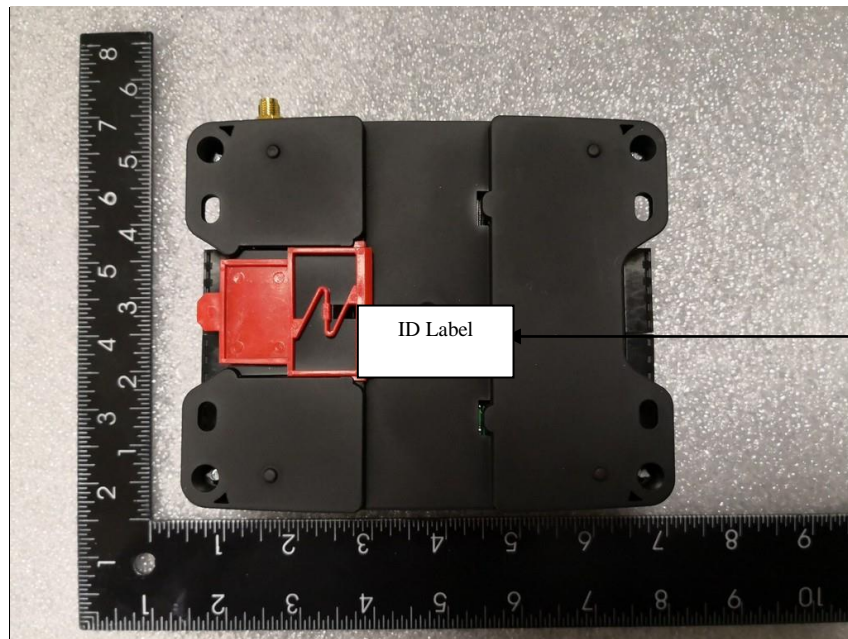


Figure 2.2 Location of Label on EUT