

Internal photos

Date of issue: **November 7, 2013**

Applicant: Carnegie Technologies

Product: SatBridge

Model: AP-TH1118

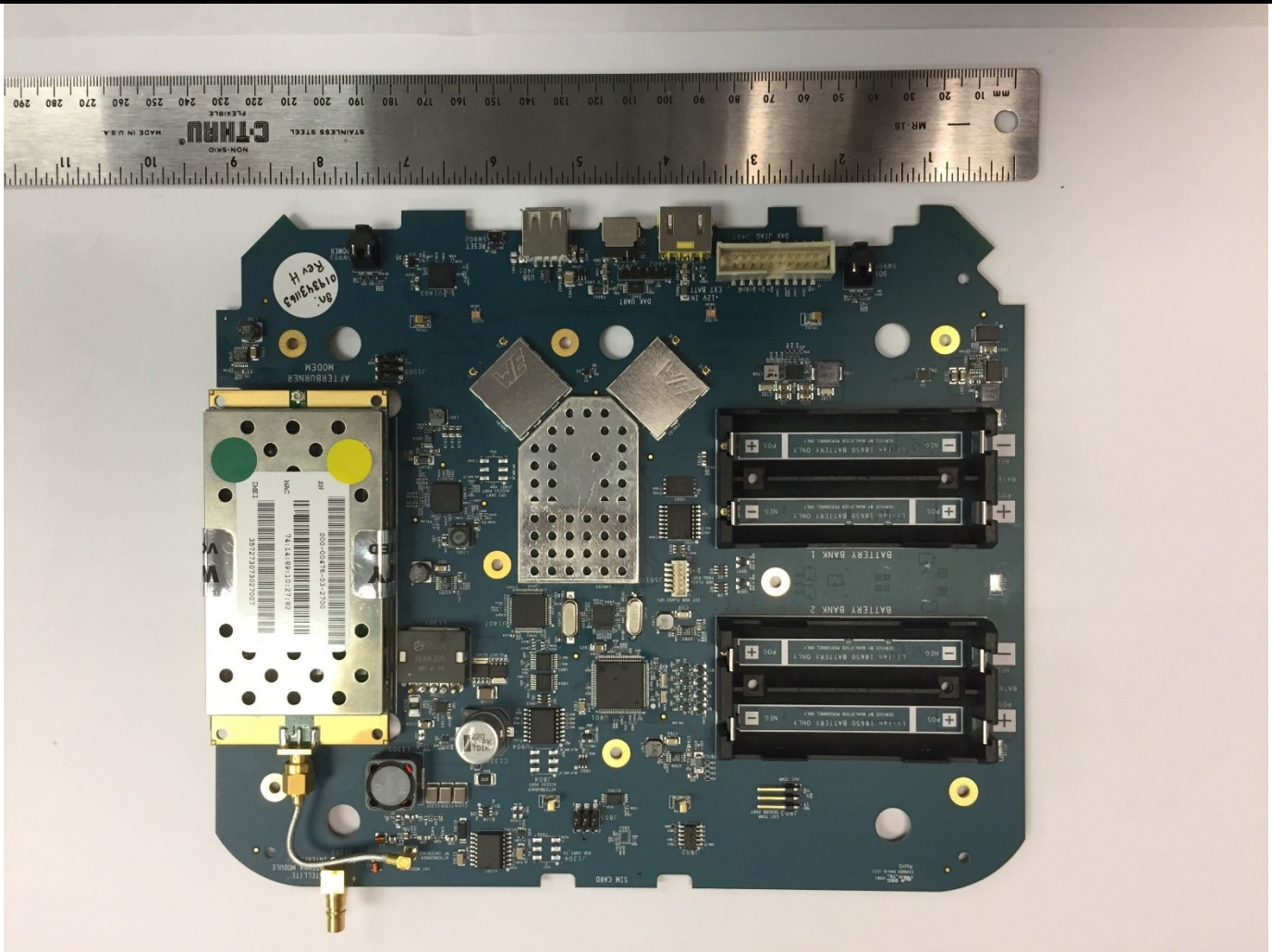
Model variant: Access Point

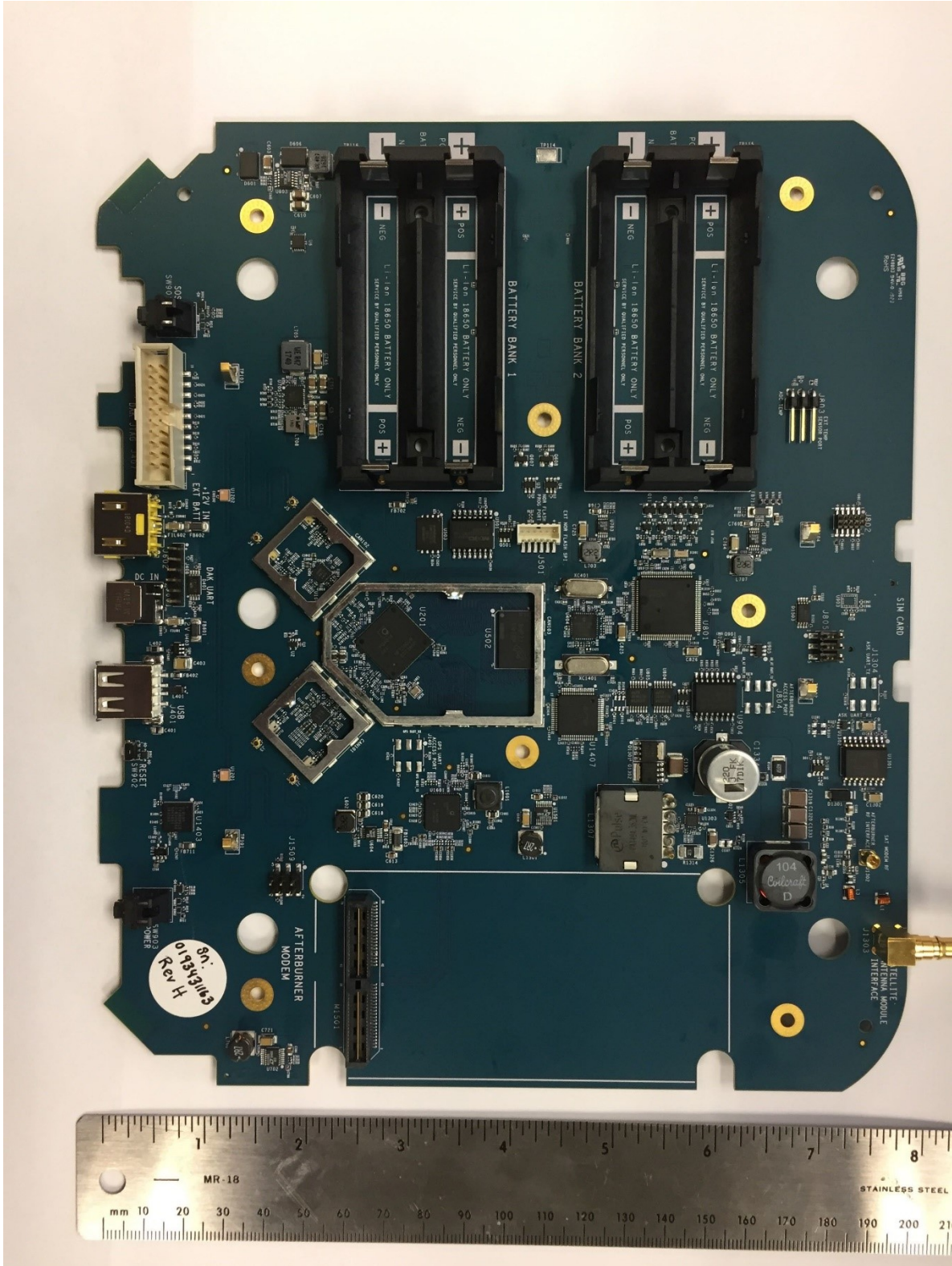
FCC ID: 2ARIP-0007

IC Registration number:

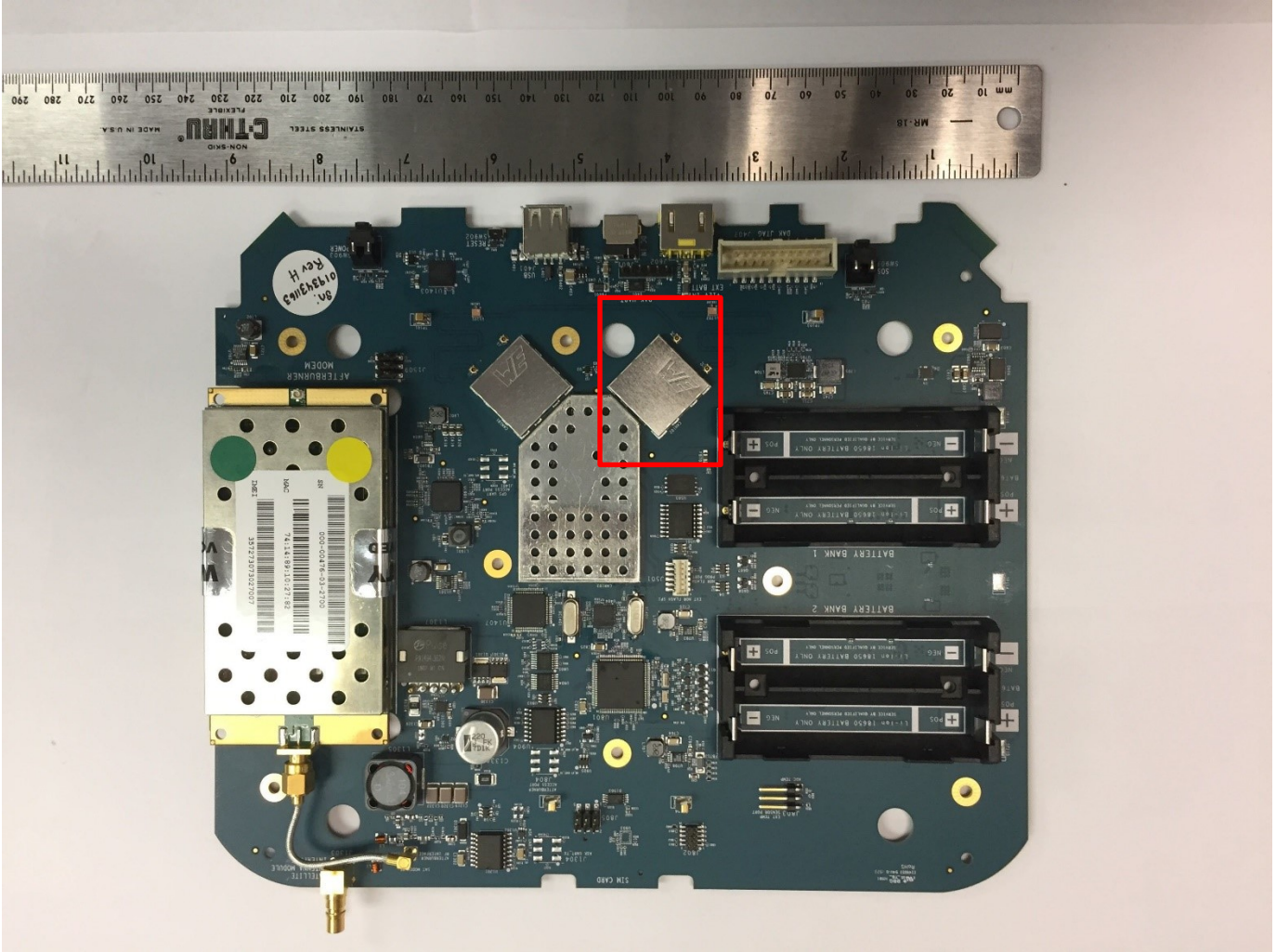
Section 1. Internal photos

1.1 Top general view with SRT Afterburner Modem installed.

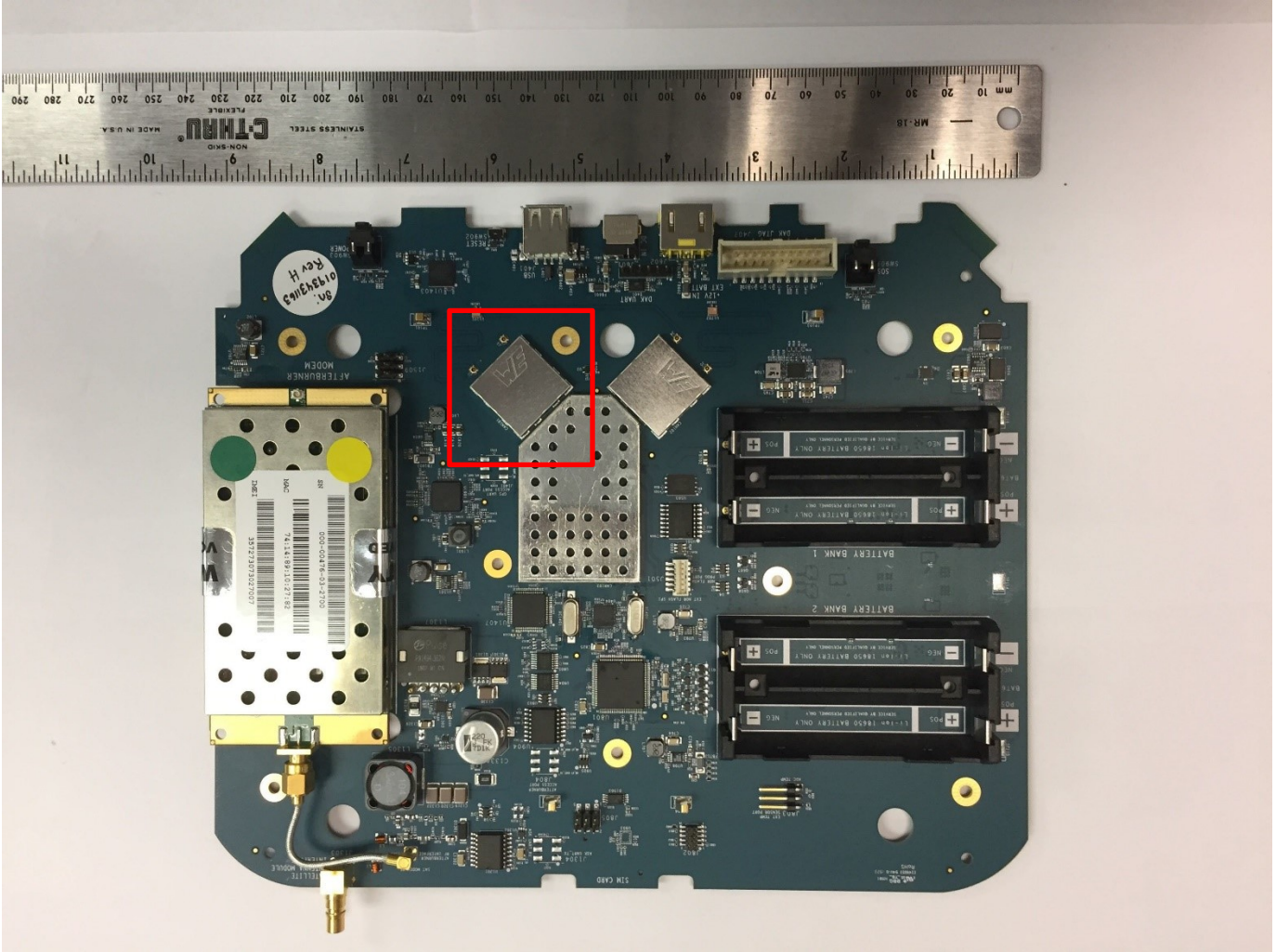




1.2 5 GHz module shielded view

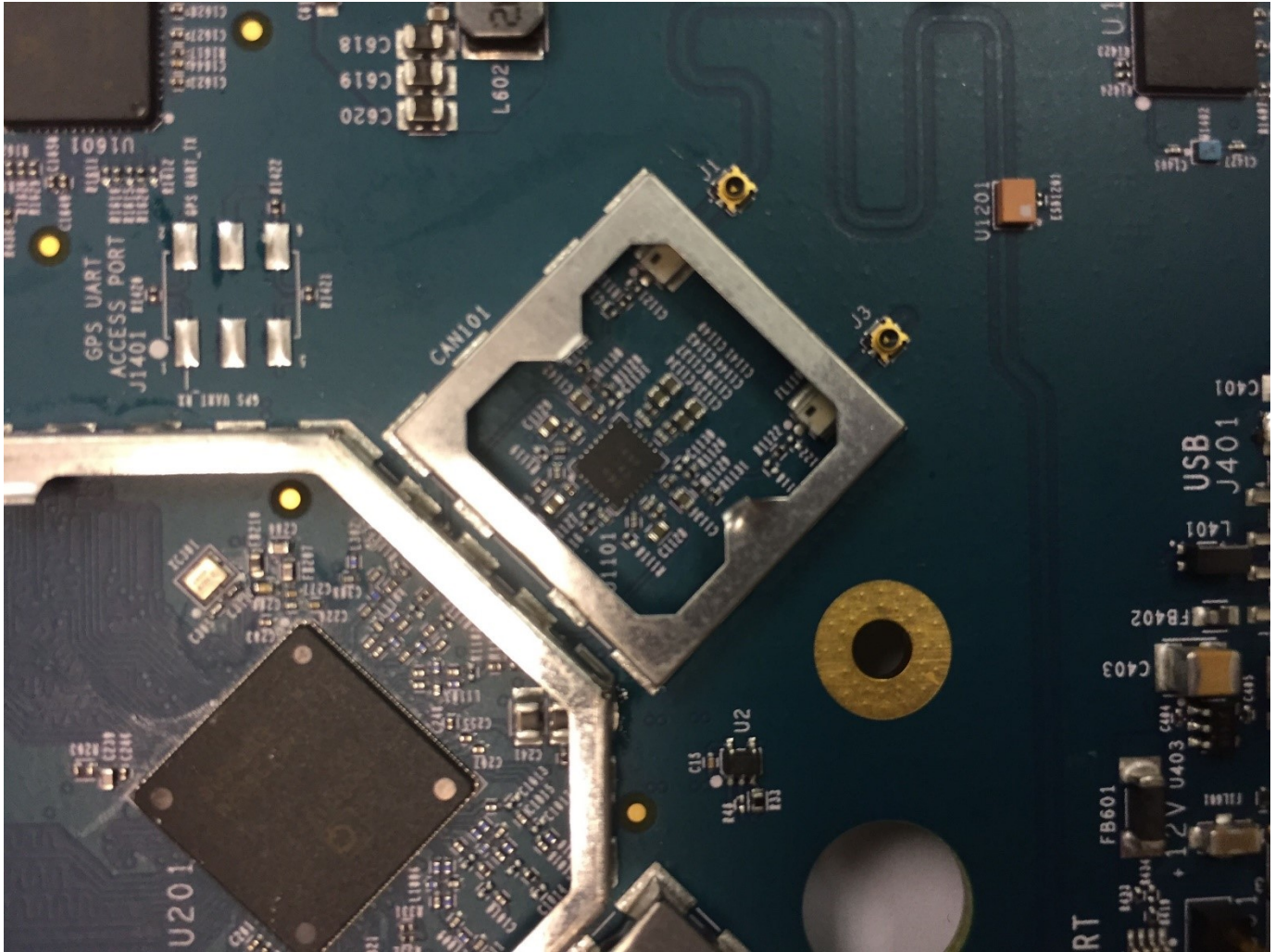


1.3 2.4 GHz module shielded view

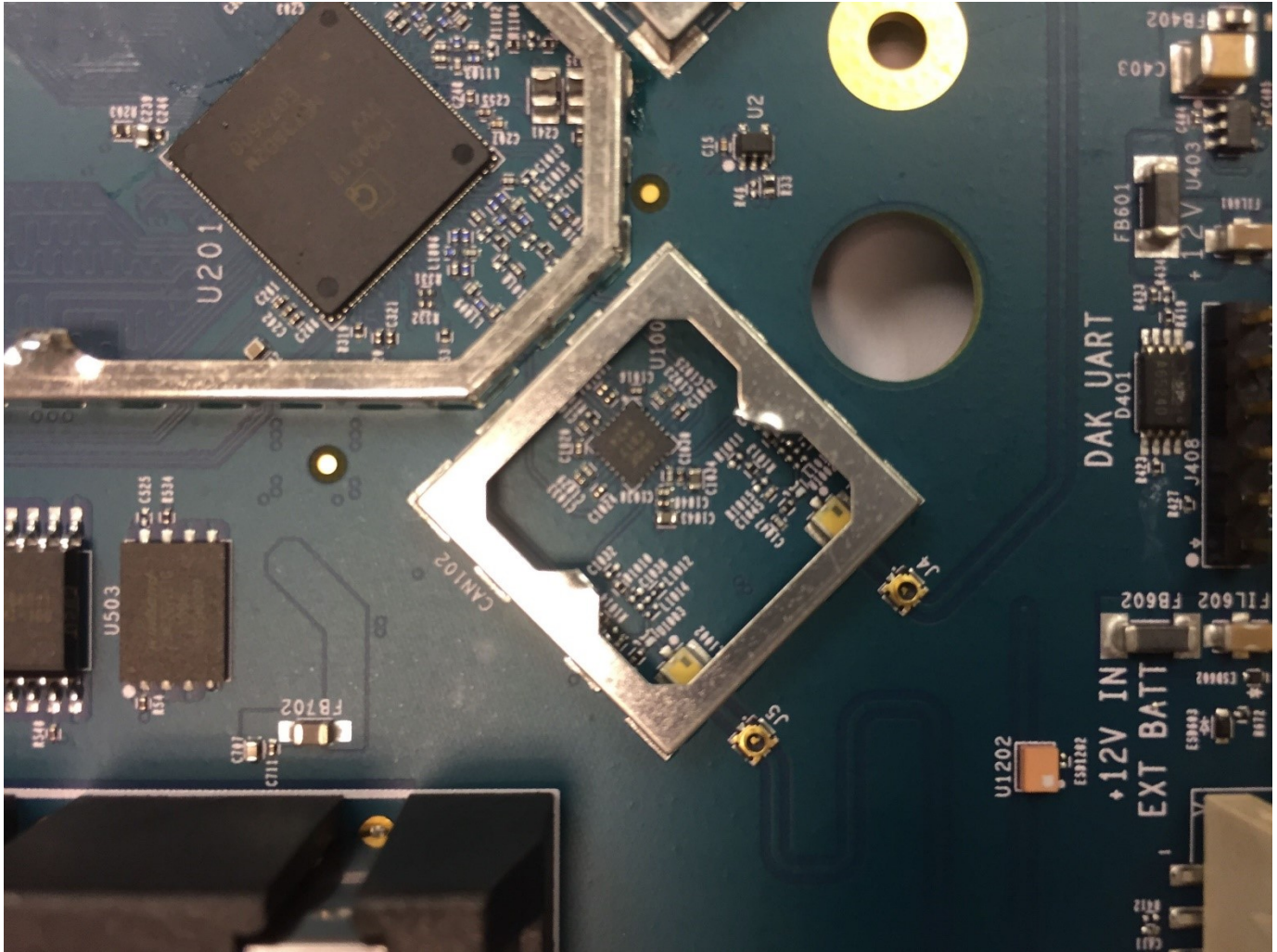


1.4 RF modules view with removed shieldings

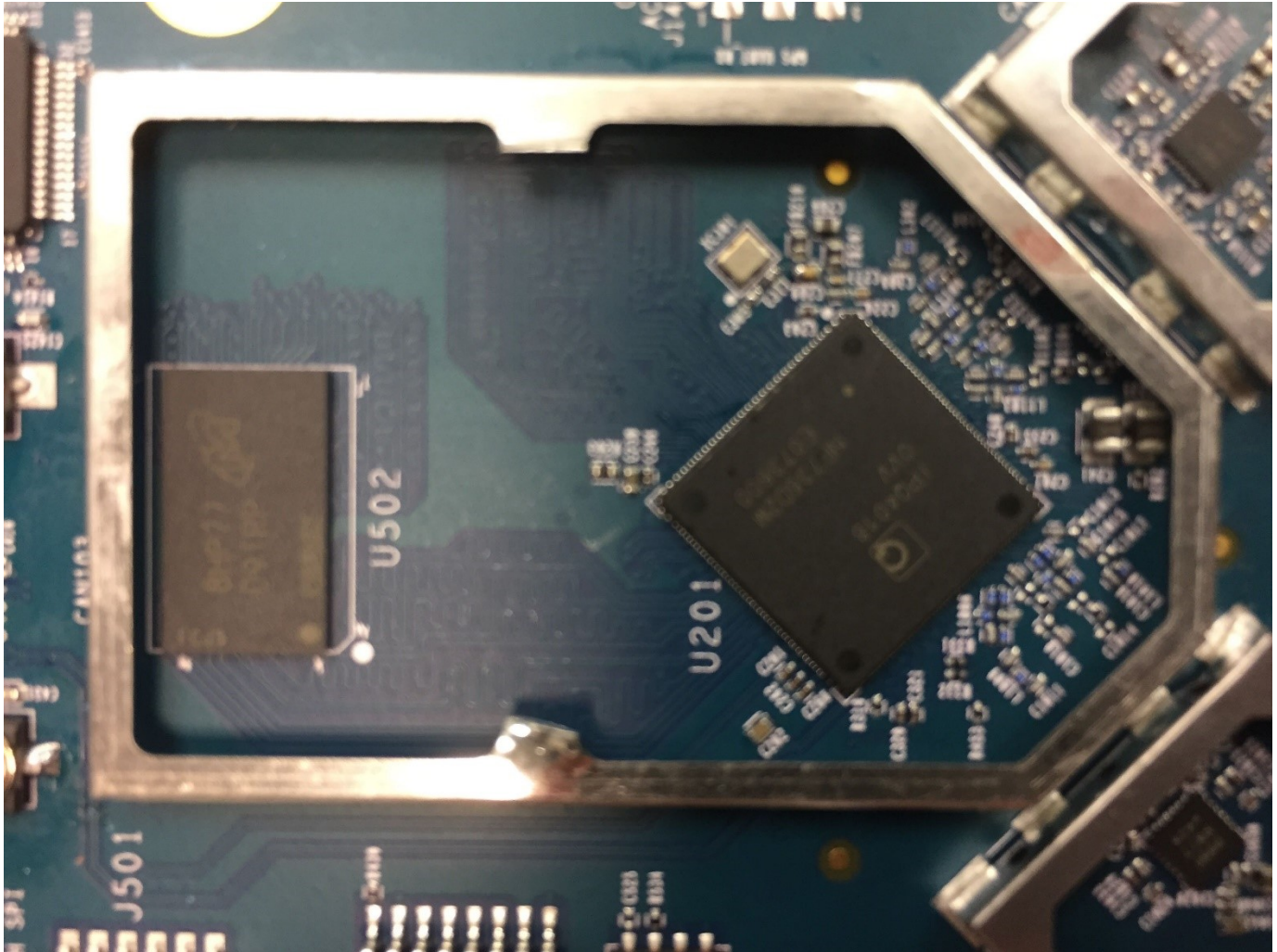
5GHz Shielding can be removed



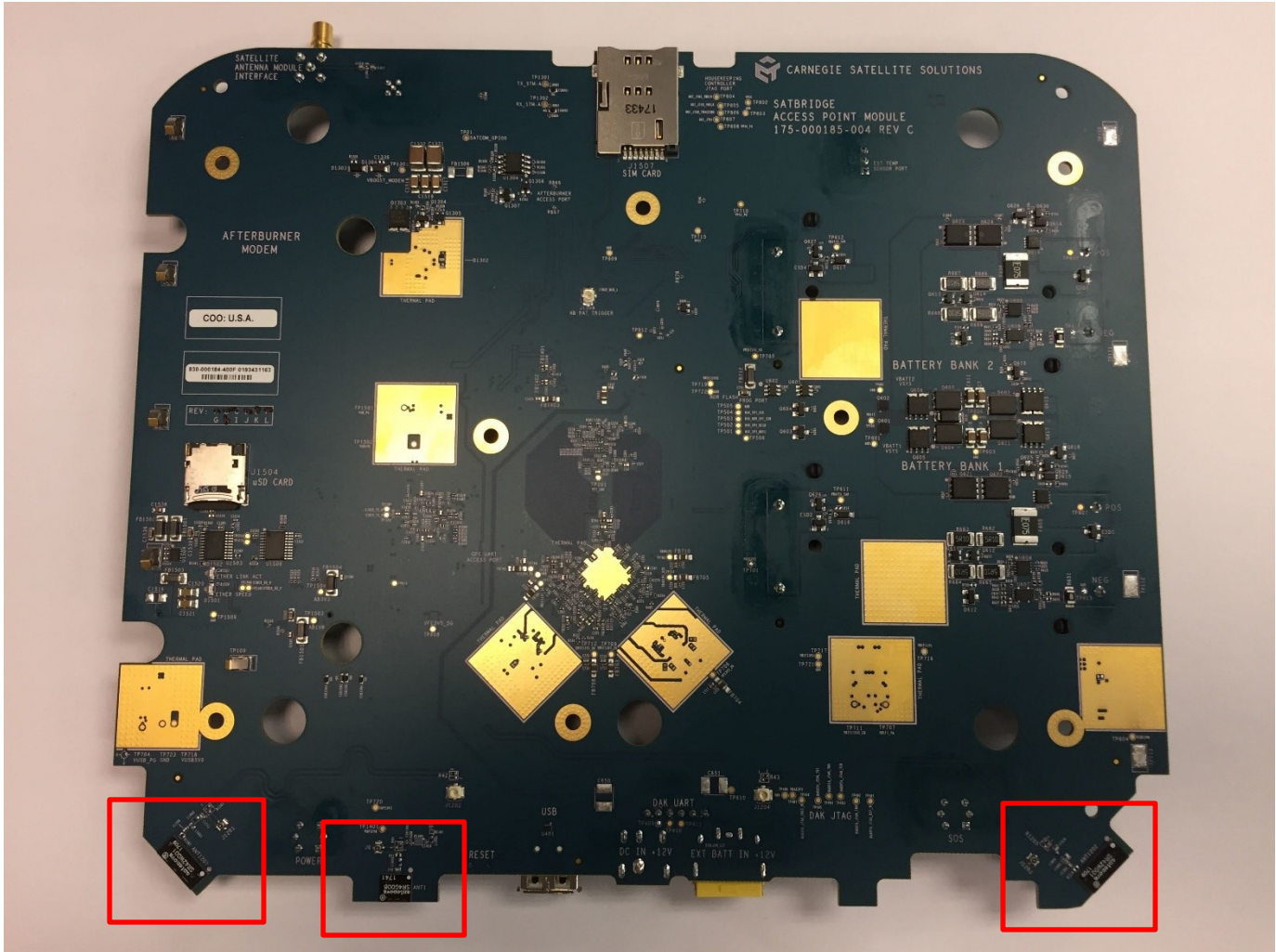
2.4 GHz Shielding can removed



IPQ 4018 WiFi Controller shielding can removed



1.5 PCB bottom view



WiFi Chnl.0 ANT.

GNSS ANT.

WiFi Chnl.1 ANT.

Internal photos

Date of issue: **November 11, 2019**

Applicant: Carnegie Technologies

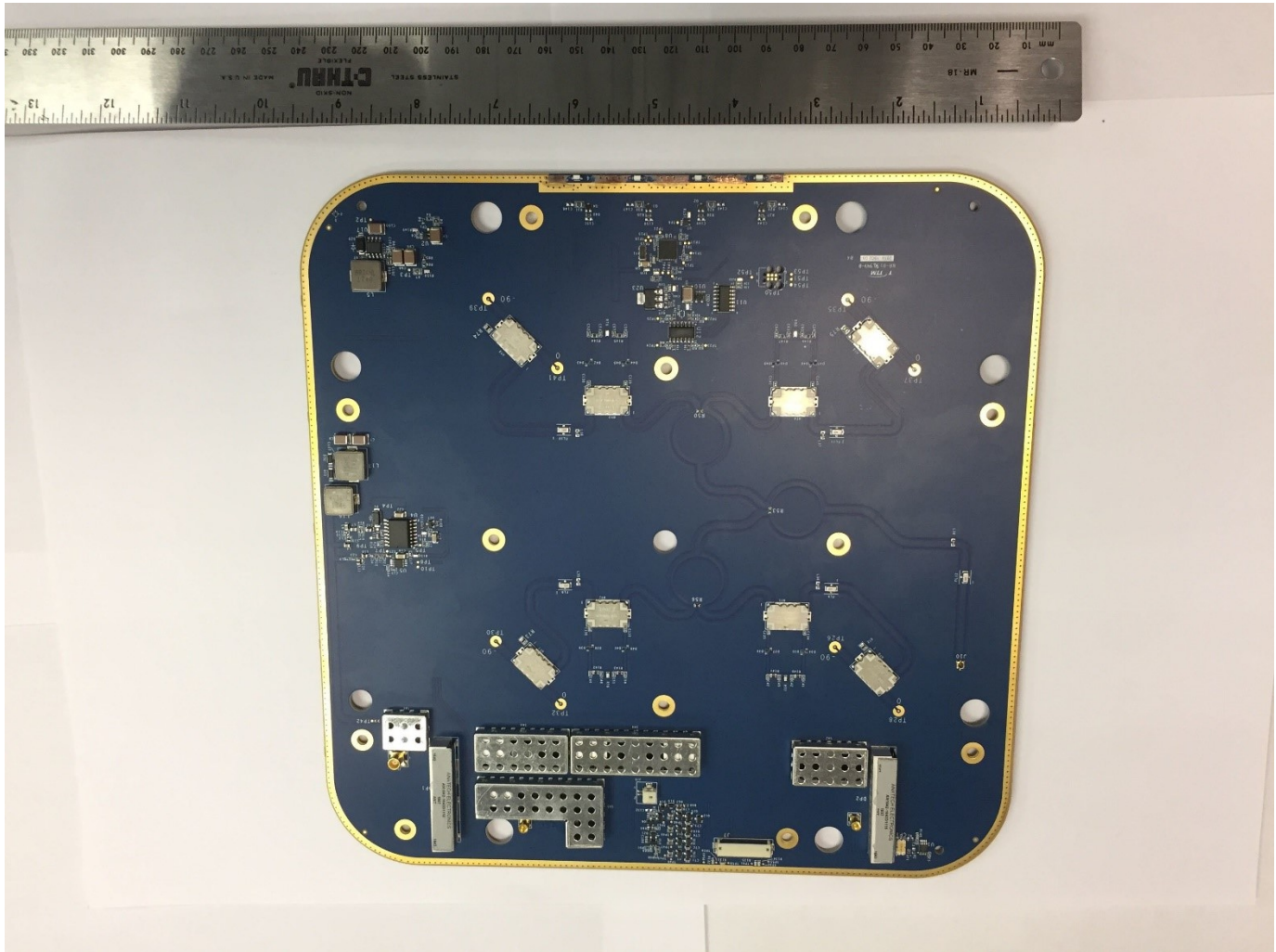
Product: SatBridge

Model: AP-TH1118

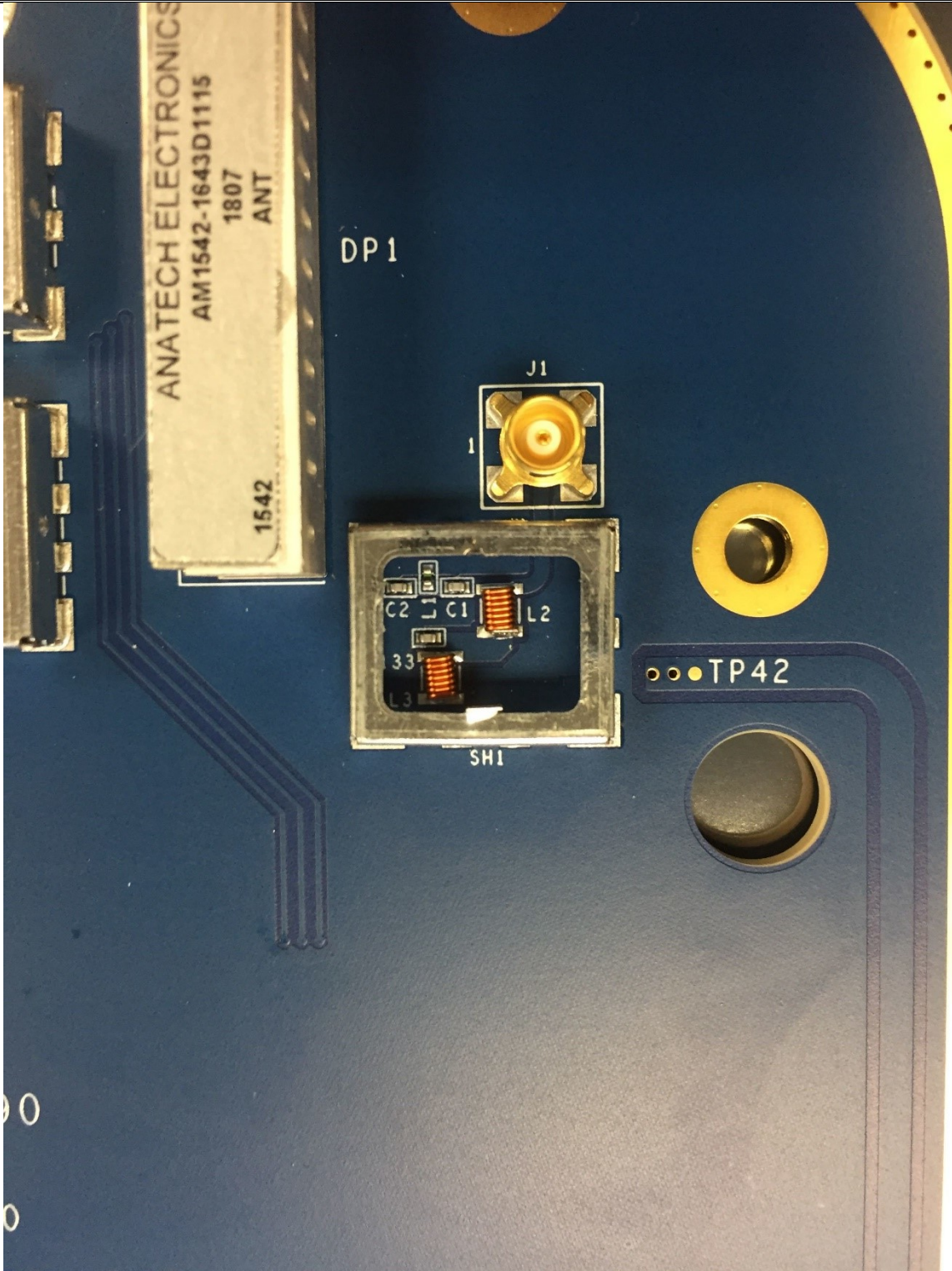
Model variant: SatBridge Antenna Module (SAM)

Section 1. Internal photos

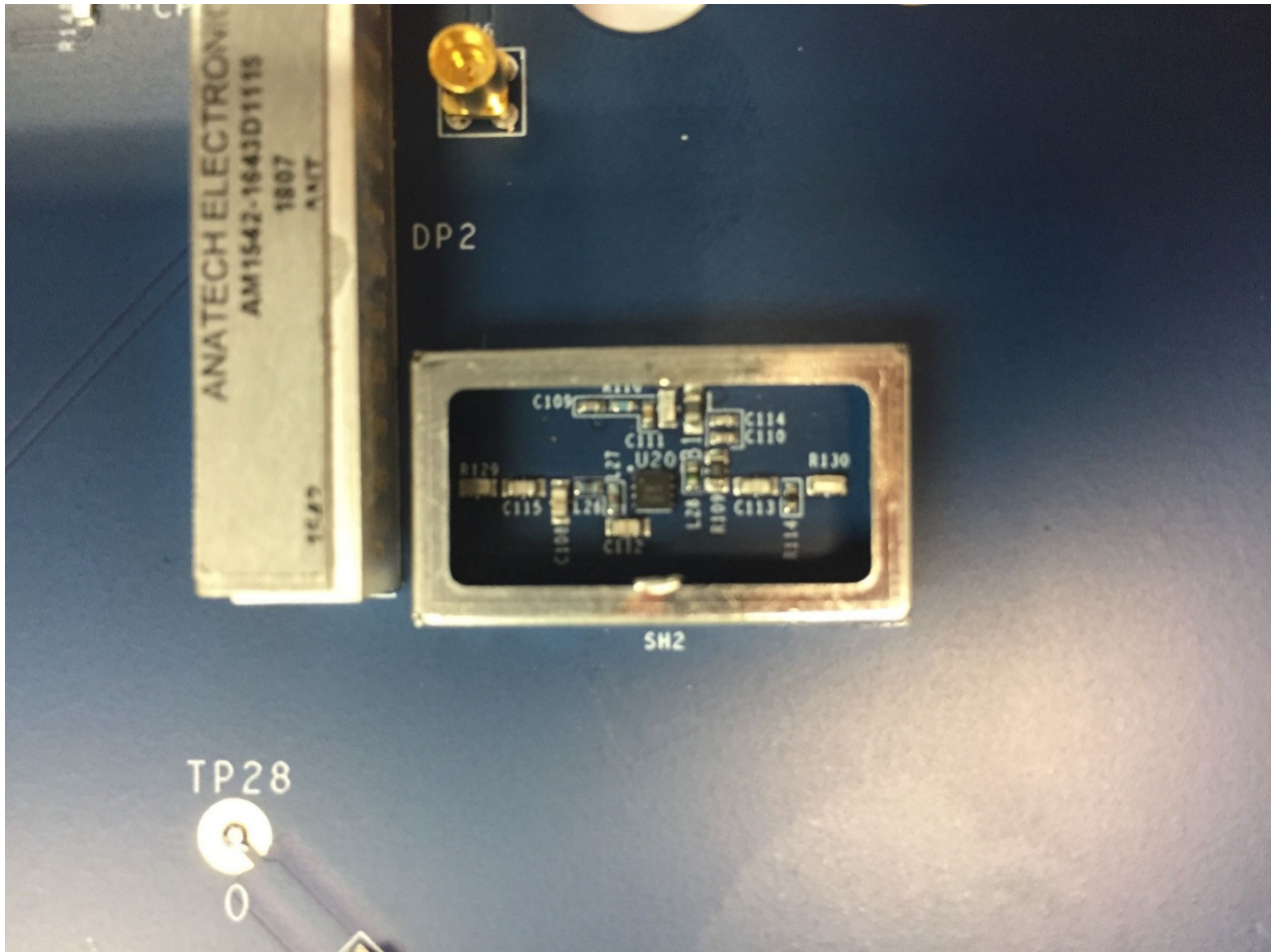
1.1 Top general view of Active (Main) Antenna PCB



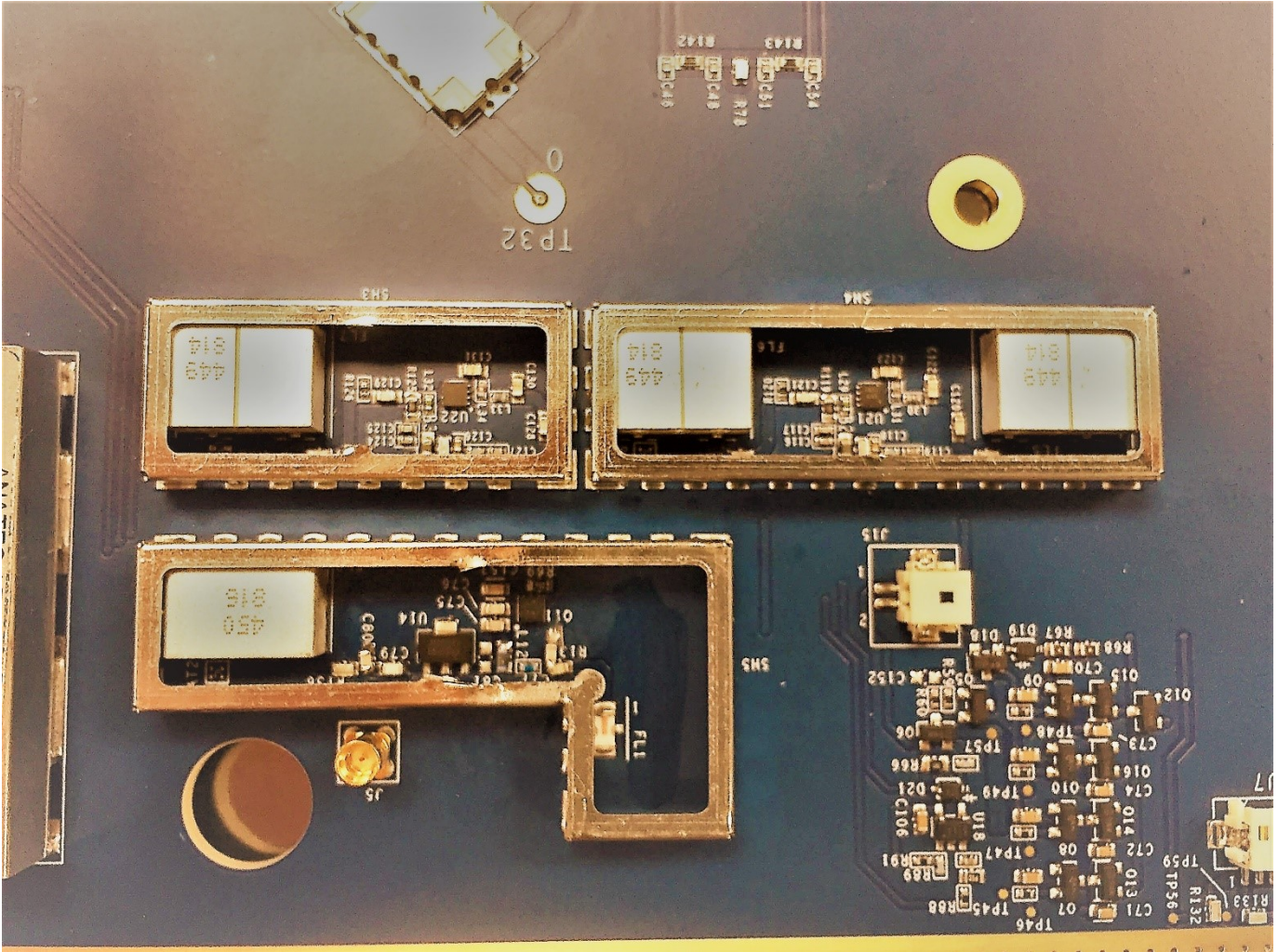
1.2 Input Filter shielded can removed.



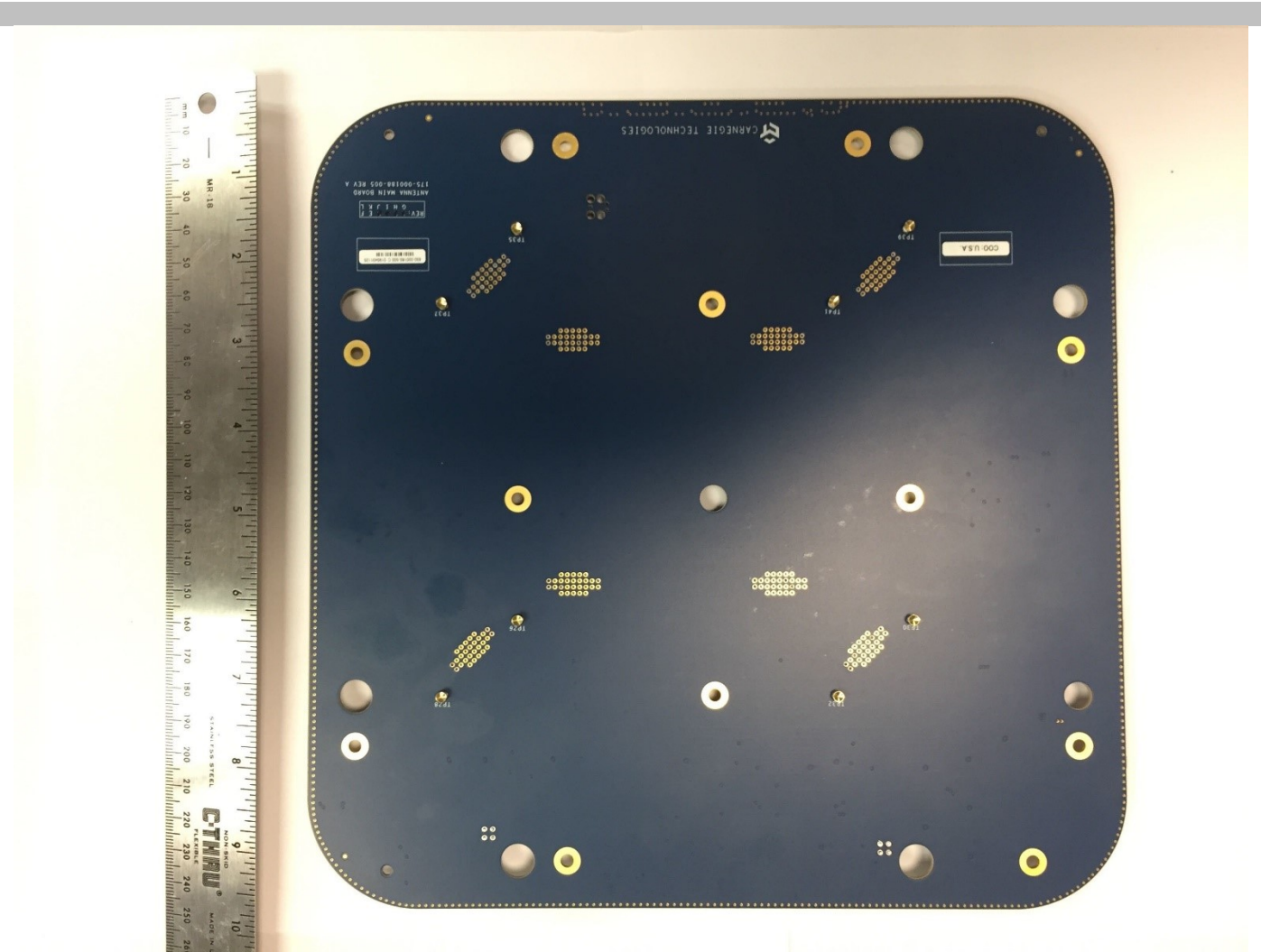
1.3 RX Power Amplifier U20 shielding can removed



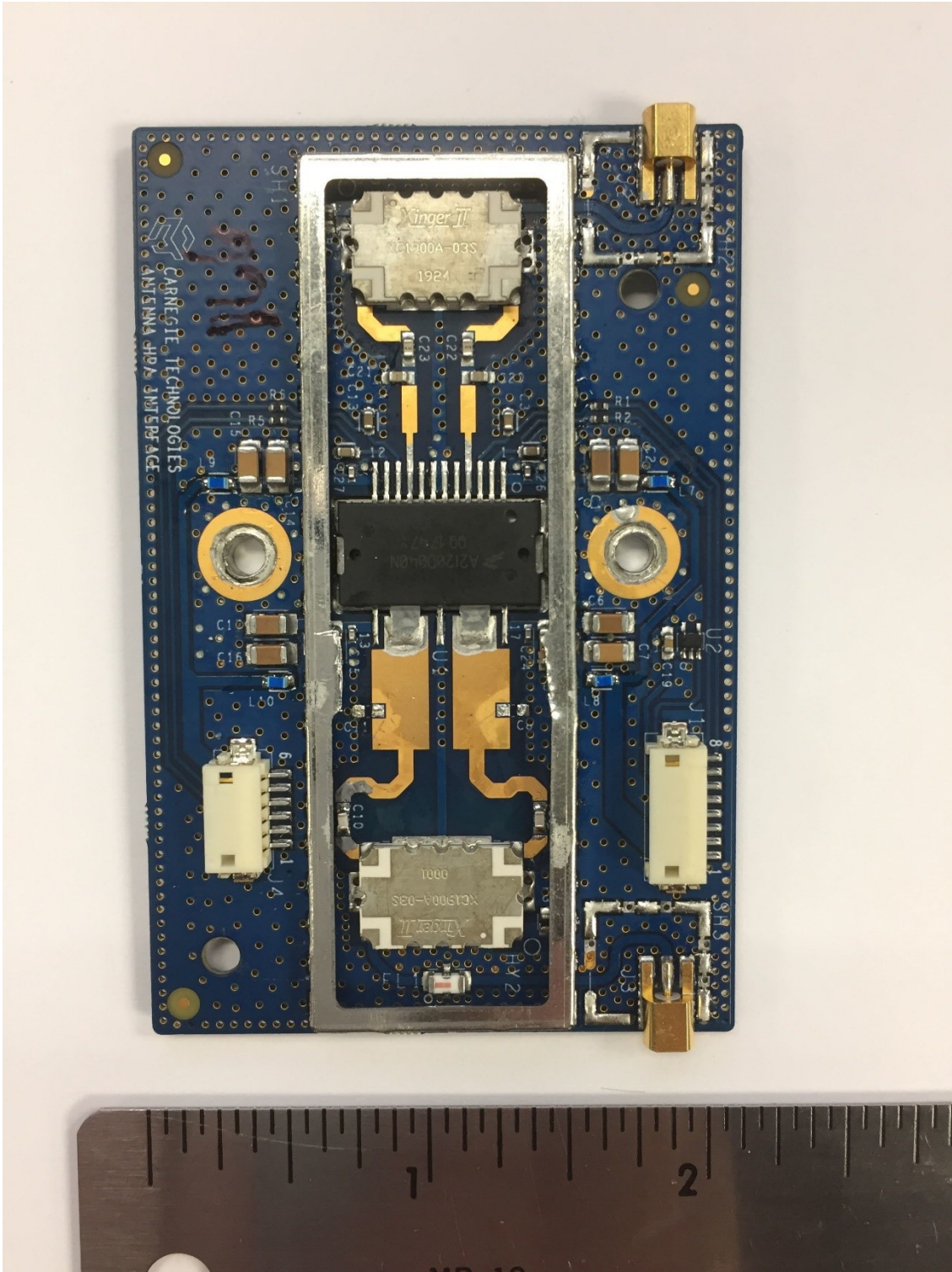
1.4 U14, u21 and u22 Shielding cans removed



1.5 Active (Main) Antenna PCB bottom



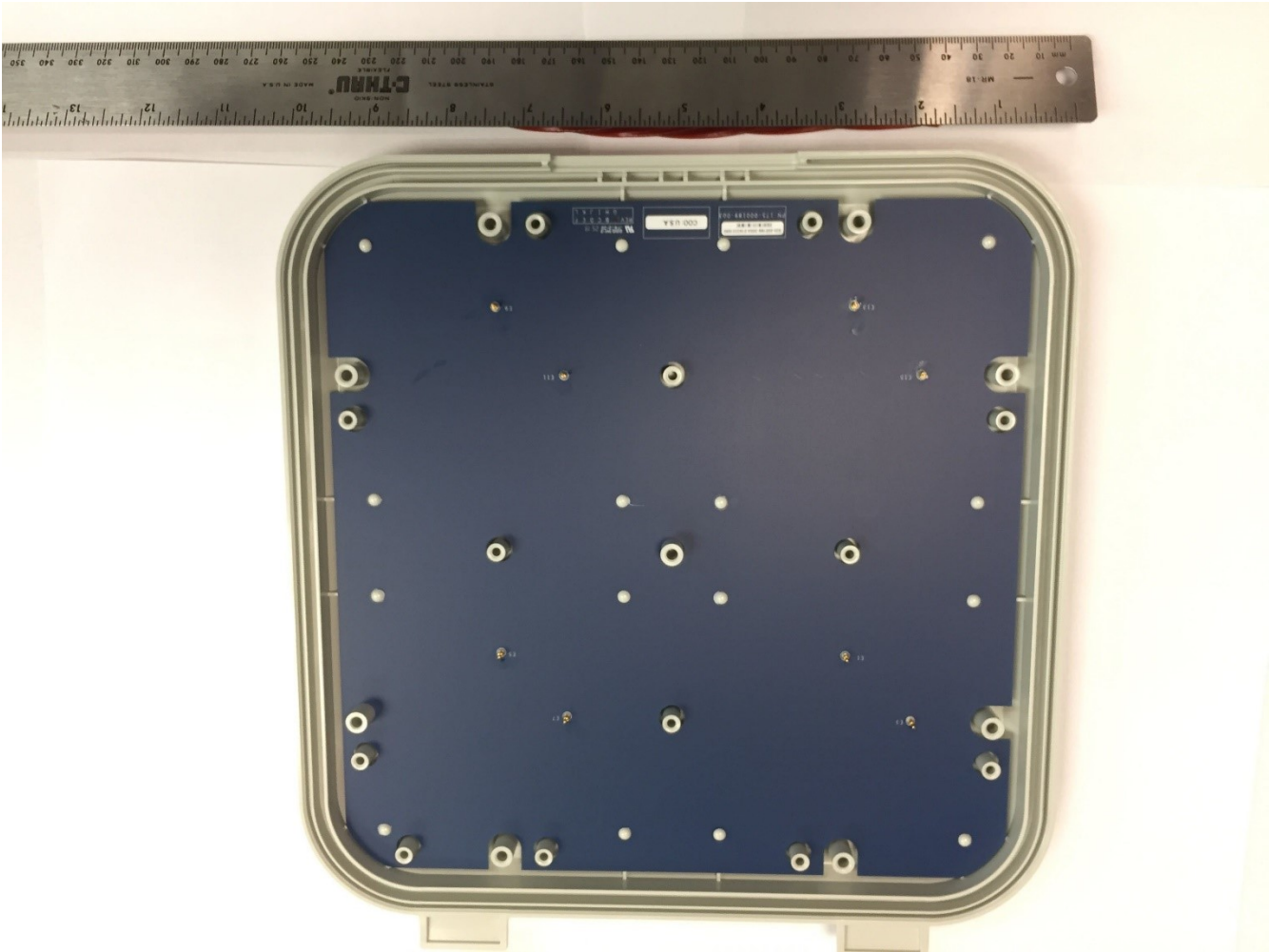
1.6 High Power Amplifier (HPA) Top, Shielding can removed



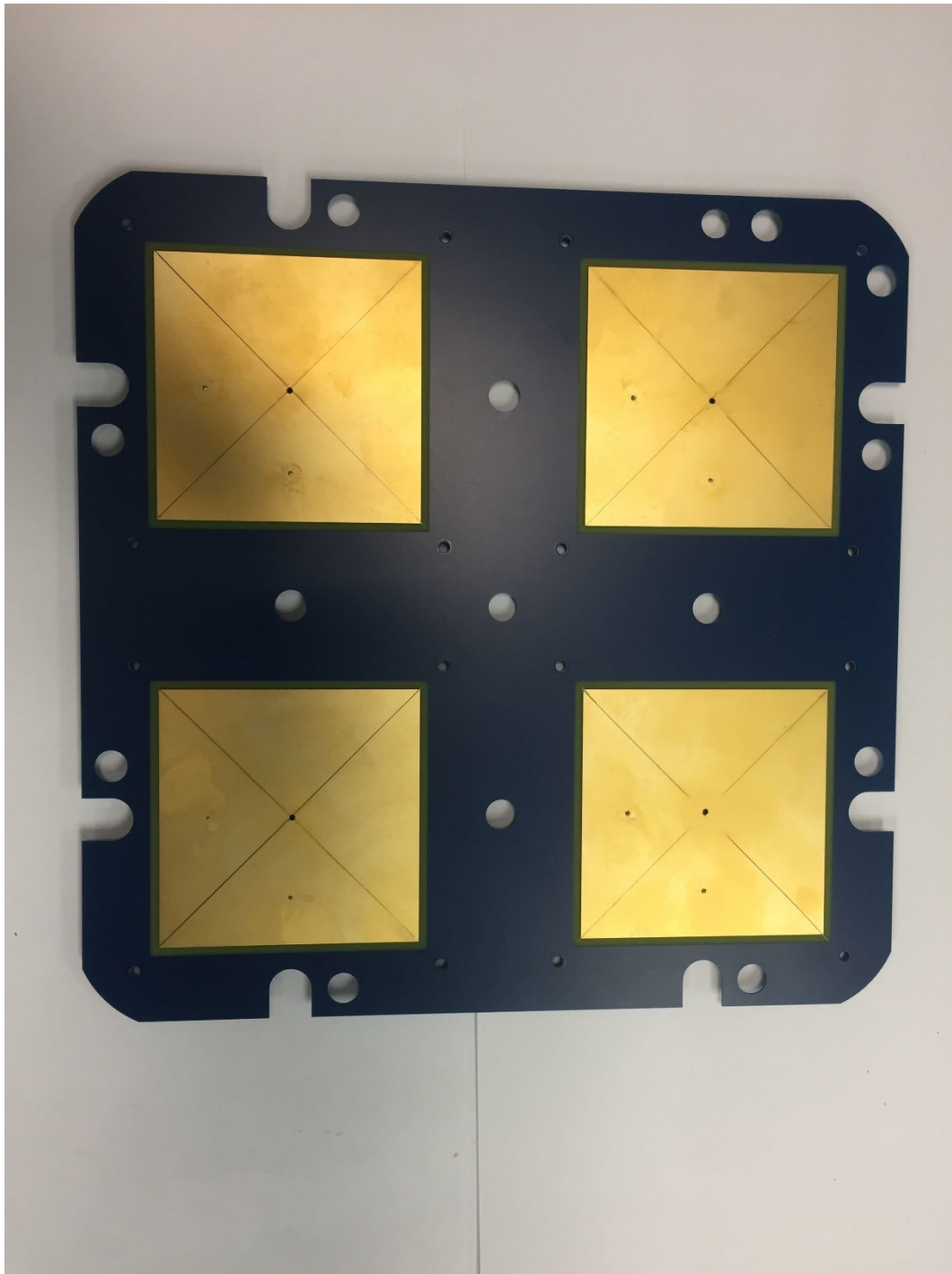
1.7 High Power Amplifier (HPA) Bottom



1.8 Passive Antenna PCB Top



1.9 Passive Antenna PCB Bottom (PFIA Radiating Elements)



1.10 PFIA Directing Elements

