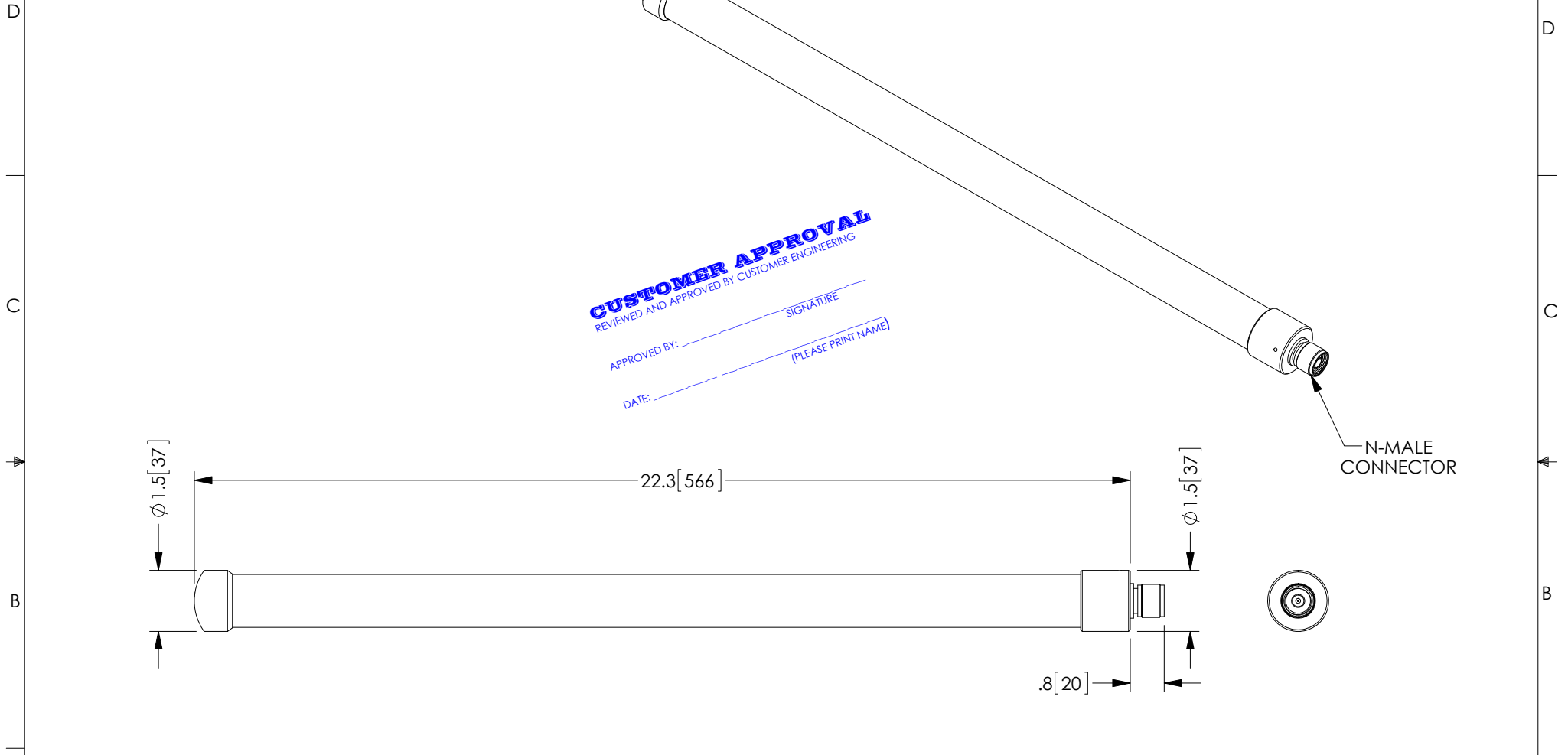


THE INFORMATION CONTAINED IN THIS DRAWING IS THE SOLE PROPERTY OF L-COM, INC. ANY REPRODUCTION IN PART OR WHOLE WITHOUT THE WRITTEN PERMISSION OF L-COM, INC. IS PROHIBITED.

REVISIONS			
REV	DESCRIPTION	DATE	APPROVED
1	PRELIMINARY	08/14/17	B.PUCHASKI



NOTES:

1. COMPONENTS SHALL BE PACKAGED IN ACCORDANCE WITH L-COM SPECIFICATION PKG-00012.

- ALL DIMENSIONS FOR REFERENCE ONLY -

REGULATORY COMPLIANCE:
CE2011/65/EU (RoHS DIRECTIVE)

PRELIMINARY DRAWING
(DO NOT USE FOR PRODUCTION PURPOSES)

UNLESS OTHERWISE SPECIFIED, DIMENSIONS ARE IN INCHES [mm] OVERALL CABLE LENGTH TOLERANCE: ≤12 [305] = +1 [25] / -0 >12 [305] ≤60 [1524] = +2 [51] / -0 >60 [1524] ≤120 [3048] = +4 [102] / -0 >120 [3048] ≤300 [7620] = +6 [152] / -0 >300 [7620] = +5% / -0%	APPROVALS	DATE		50 HIGH STREET NORTH ANDOVER, MA 01845
	DRAWN BY B.PUCHASKI	08/14/17		CATEGORY
ALL OTHER DIMENSIONAL TOLERANCES: .X = ± .2 [5.08] .XX = ± .02 [1.51] .XXX = ± .005 [1.13]	CHECKED BY J.LABOY	08/14/17	PRODUCT DESCRIPTION ANT, OMNI 800/900MHz 6dBi W/ N-MALE CONNECTOR	
	APPROVED BY P.NEWTON	08/14/17	SIZE A	FSCM NO. 43321
PROJECTION 	CONFIGURATION DETAILS OF UNDIMENSIONED FEATURES MAY VARY		DWG. NO. SP97177	REV. 1
COLOR VARIATIONS MAY OCCUR		SCALE: NONE	CAD FILE: SP97177.SLDDRW	SHEET 1 OF 1