



Blueair Cabin P2iD

Car Air Purifier User Manual





Before using your **Blueair Cabin P2iD** car air purifier please refer to the User Manual. We have also included a Quick Start Guide for convenience.

Note:

There may be local variations of this model.

By using this product, you hereby signify that you have read this disclaimer carefully and that you understand and agree to abide by the terms and conditions herein.

Blueair accepts no liability for damage, injury or any legal responsibility incurred directly or indirectly from the use of this product. You agree that you will use this product in a proper and safe way which is in accordance with all applicable laws, regulations, standards and all terms and guideline made by Blueair (including but not limited to those set out under this User Manual). You agree that you are solely responsible for your own conduct while using this product, and for any consequences thereof.

Please read this User Manual carefully to become familiar with the features of this product and the instructions for assembly, set-up, placement or use of this product before operating. Failure to operate this product correctly or in a safe manner as specified in this User Manual can result in damage to the product, personal property and cause injury.

This product is not intended for use by children without direct adult supervision. Please do not use this product with incompatible components or alter this product in any way outside of the documents provided by Blueair.

Contents

General	3
Safety instructions	4
Blueair Cabin P2iD car air purifier.....	6
Filters	7
Getting started	8
Functionality	11
Care and maintenance	16





General

Blueair Cabin P2iD car air purifier

The Blueair Cabin P2iD car air purifier is designed for use in medium-size to large cars, purifying the air while the car is in use.

Blueair's HEPASilent™ advanced filtration technology enables the car air purifier to remove harmful pollutants (i.e. VOCs such as Formaldehyde), particles and odors.

The car air purifier comprises two units (a main unit and an extension unit) which are connected with a 3m extension cable.

The car air purifier monitors the particle level in your car, displays the current air quality on your smartphone and provides app control.

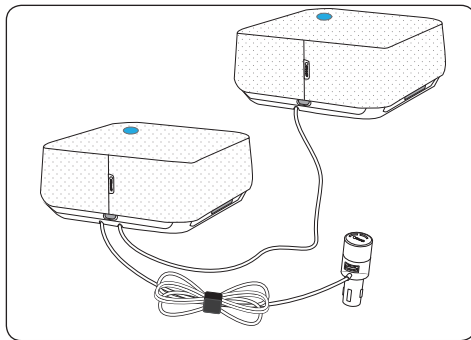
When Auto mode is active, the fan is automatically adjusted based on the readings from the built-in laser particle sensor, thus achieving optimal air purification.

A control knob (also 12V power) enables the driver to either change the fan speeds (3 speed options) or activate the Auto mode program.

The particle level and current fan setting are indicated on the top of the control knob. (Refer to section "Functionality" for more detailed information).

A 4,5 m cable connects the control knob to the main unit so that it can be installed behind a backseat headrest.

The product is equipped with an easily accessible USB charging port so that back seat passengers can charge another device while the cabin air is cleaned. Similarly, a USB charging port on the control knob is available for use by the driver or front seat passenger.





Safety instructions

General

DISCLAIMER:

Ensure that the car air purifier is installed according to the instructions in the user manual. For your safety use only the items supplied in the box. Whilst operating the device, the driver must be aware of, and take into consideration the prevailing traffic conditions. Blueair declines all responsibility for personal harm or injury whilst using the product if the installation has not been carried out correctly or if the product is used incorrectly.

- The car air purifier warranty applies only if the product is installed, used and maintained according to these instructions.
- The car air purifier warranty applies only if the product is used according to these instructions.
- Please do not adjust the settings , or look at the display of the car air purifier whilst driving.
- Please do not look at your mobile phone whilst driving. You must comply with all applicable safe driving laws and behaviours, including those addressing the use of mobile devices.



WARNING: Indicates a hazardous situation that, if not avoided, could result in death or serious injury.



CAUTION: Indicates a hazardous situation that, if not avoided, could result in minor or moderate injury.



WARNINGS:

- To avoid a hazard, a supply cable must always be replaced (because of damage, malfunction or any other reason) by the manufacturer, service agent or similarly qualified person.
- Do not spill any liquids such as water, detergents or flammable solvents on the device. Do not use the device if any liquids have spilled on it. If there is a spill, wipe the exterior of the unit with a soft, clean, damp cloth.
- Use only the mounting strap included in the box and ensure that the unit is securely fastened as specified. Blueair disclaims all liability for any harm or accident caused by improper installation, usage, disassembly and maintenance by any user or third party.

Note:

The mounting straps shall not be removed from the unit.





- To avoid injury it is important not to install any unit in front of, or near the safety airbag which is normally located in the dashboard in front of the front passenger seat.

CAUTIONS:

- Only use the power cable provided with your car air purifier to plug directly into an appropriate 12V power outlet in a car.
- The car air purifier is designed for connecting to a 12V power outlet in a car that is automatically turned on or off when the ignition is turned on or off. Therefore we highly recommend using an ignition-controlled 12V power outlet in the car to avoid the risk of draining the car battery.

Note:

The product can also be installed in a boat, truck or RV/motorhome 12V power outlet. Ensure that the unit is securely fastened.

- Do not alter the plug in any way.
- Do not use the units if the power cable or plug is damaged or malfunctions in any manner.
- Keep the power cable away from heated surfaces.
- No foreign objects should enter the units as this may cause a electric shock or damage.
- To prevent damage to the units do not block the air outlets, air inlets and air ducts.
- Install the units in a position where air can fully circulate around it - do not cover the units.
- The device contains high precision technology. Dropping or striking the device may cause damage.
- Install the units in the appropriate position inside the vehicle by using accompanying accessories and according to the instructions in the user manual.
- Do not remove or replace the mounting straps that are delivered with the units.

Intended use



CAUTIONS:

- This appliance is not intended for use by persons with reduced physical, sensory or mental capabilities, or lack of experience and knowledge, unless they have been given supervision or instruction concerning use of the appliance by a person responsible for their safety.
- To avoid electric shock or damage, keep the product out of the reach of children since it is not a toy.

COMPLIANCE AND STANDARDS

This product complies with:SRRC, CMIIT ID no:



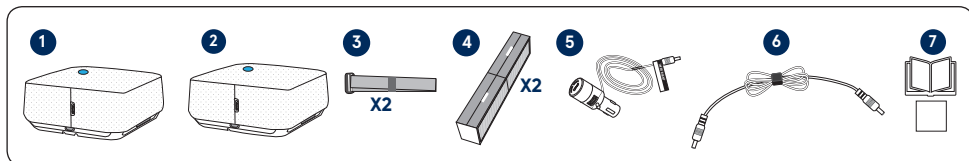


Blueair Cabin P2iD car air purifier

1. Open and unpack the box
2. Read the User Manual and Quick Start Guide

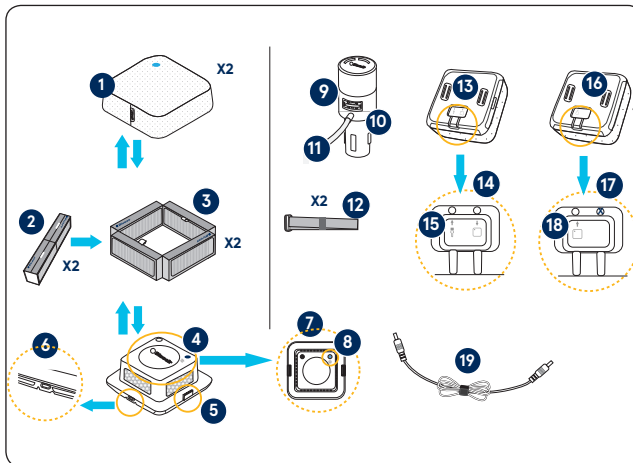
Please refer to www.blueair.com for more information.

Contents of box



1. Purifier main unit
2. Purifier extension unit
3. 2 Mounting straps
4. 2 Particle+Carbon filters
5. Control knob with a 4,5m power cable
6. 3m extension cable with velcro cable tie
7. User information

Product Overview



1. Top cover
2. Folded Particle+Carbon filter
3. Unfolded Particle+Carbon filter
4. Main unit base
5. Top cover release lock
6. USB charging port
7. Main unit base (top view)
8. Filter reset button
9. Control knob
10. USB charging port
11. Power cable
12. Mounting straps
13. Back view (main unit)
14. Cable plug area (main unit)
15. Power supply port (12 V) - main unit
16. Back view (ext. unit)
17. Cable plug area (ext. unit)
18. Power supply port (12 V) - ext. unit
19. 3m ext. cable with velcro cable tie





Filters

IMPORTANT!

Please note that the Particle+Carbon filters are not mounted inside the units when purchased. The filters are separate items inside the box and **MUST** be installed before use.

Two Blueair Particle+Carbon filters are delivered with car air purifier. These filters remove the following airborne pollutants from the car:



Particles
PM1.0/PM2.5/
PM10



VOCs
including
Formaldehyde



Dust



Pollen



Pet
dander



Smoke



Bacteria

IMPORTANT!

Use only genuine Blueair filters to ensure proper function of your unit and to qualify for full warranty coverage.

Filter checklist

To make it easy to find the right filter in the future, please fill in the customer record below and keep this user manual for reference. The model number and serial number of this product can be found on the rating label on the bottom of the unit.

Model number _____ Retailer's name _____

Serial number _____ Retailer's address _____

Date of purchase _____ Telephone number _____

Blueair filter subscription program

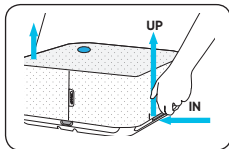
This convenient service is available in some countries – contact your local Blueair retailer or check the Blueair website to find out if you can join.



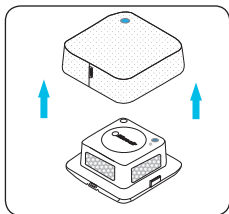


Getting started

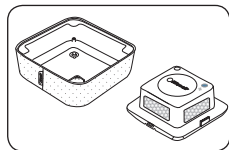
1. Remove the top cover



1. Place the purifier unit on a flat surface or car seat and release the top cover by pressing the left and right release locks IN and UP as shown.

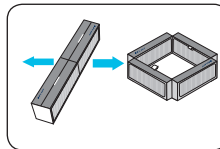


2. Lift off the top cover.

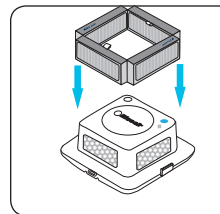


3. Turn top cover upside down and place next to the purifier unit base.

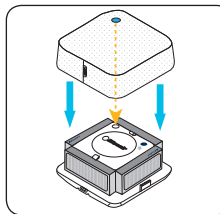
2a. Install the filter



1. Remove the plastic bag from around the filter and pull the two sides of the filter apart to form a square.



2. Mount the unfolded filter onto the purifier base unit.



3. Remount the top cover onto the purifier base unit

Note:
As a safety precaution the unit cannot start unless the top cover is installed correctly.

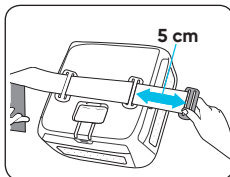
Note:
There is no need to press the filter reset button for initial filter installation.

Note:
Repeat this process for the extension unit.
Always change filters in both units at the same time.



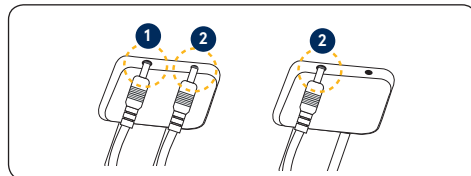


2b. Attach the mounting straps



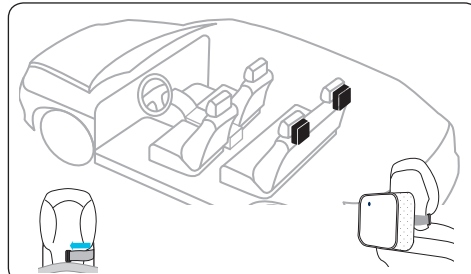
With purifier unit base face down on a flat surface, thread the mounting strap through the two silver buckles (as shown). Velcro side faces unit.

3. Connect cables to units



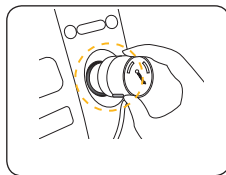
Before installing the units into the car, connect the power cable to the power supply port on the back of the main unit. Connect the 3m extension cable between the power supply out port on the main unit and the power supply in port on the extension unit.

4. Place and install the units



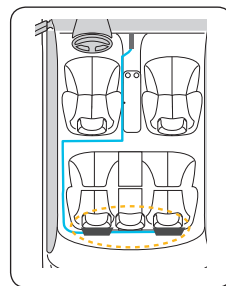
Firmly secure the unit behind a back seat headrest by adjusting the mounting strap accordingly.

5. Connect control knob and 12 V power supply

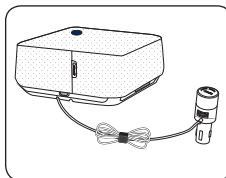


Connect the control knob with power supply into the 12 V power supply port located near the driver. (Refer to page 5 for more information).

6. Cable management



Run the cable under carpets or other plastic details between the control knob and the units. To avoid cable damage when adjusting car seats, do not run too close to the seat tracks.



Coil any cable excess and fasten with the supplied cable tie.





7. Connect the car air purifier to your smartphone

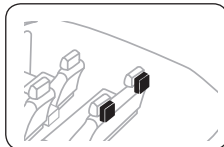
To control the product remotely and view the air quality in real time, connect the product to your smartphone using Bluetooth.

Note:

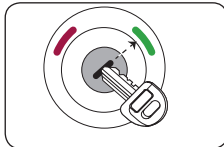
For complete information about technical requirements on your phone, please refer to the Blueair Friend app store description. For detailed instructions about Bluetooth pairing, please visit the support section on blueair.com. Also, step-by-step pairing instructions are shown on the app screen.



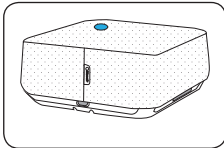
1. Download the Blueair Friend app to your smartphone from your relevant app store. Register an account and log in.



2. Install the car air purifier. Refer to section "4. Place and install the units".



3. Turn on the car's ignition.



4. Turn on the units - (a blue LED lights up on the top covers indicating the units are powered-up).



5. Follow the on screen instructions to pair your product using Bluetooth.

After connecting successfully you can remotely control the units and track the air quality in real time.

8. OTA (Over-the-air updates)

To stay up-to-date with latest improvements, the product firmware can be upgraded over the air. The Blueair Friend app will alert you when a new firmware update is available for download. After the firmware update has been accepted in the app, the control knob will indicate the ongoing update with a green light. Keep the unit powered up and connected to Bluetooth and Internet until the firmware update is completed. The unit will restart once the firmware update is complete.



Note:

Do not turn off the unit during OTA. The unit automatically restarts and continues with the latest fan setting.





Functionality

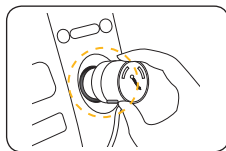
1. General

The car air purifier unit is controlled either by flicking the control knob or by using your smartphone (refer to section “7. Connect the car air purifier to your smartphone”)

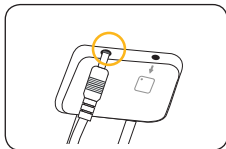
Notes:

1. In order for the unit to clean the air optimally, please ensure that the car’s recirculation mode is active and any window or sunroof is closed.
2. When the units are powered off and then powered-up again, then the fan speed is activated at the same speed as the last used setting.
3. The cleaning time depends on the cabin volume of the cars in question. Blueair Cabin P2iD car air purifier is recommended for use in cars up to large-size (see table on page 12).

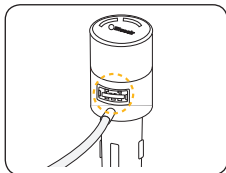
2. The control knob - overview



The control knob is mounted into the 12V power supply port, e.g. on the dashboard of the car.



The other end of the cable is inserted into the power supply port located on the main unit.



A USB port on the control knob enables the driver or front seat passenger to connect and charge another device (e.g. mobile phone).

2a. Navigation

Flick the control knob once to progress through the fan speeds (see section “Adjusting fan speed”). The control knob display is only illuminated when the fan is active.

- Low fan speed
- Medium fan speed
- High fan speed
- Auto mode
- Back to low fan speed etc.

2b. Information

The control knob can also display:

- Unit power on/idle mode
- Particle level inside the car
- Filter change alert
- Fan speed setting
- Notifications (see section “Notifications”)





3. Turn on

3a.



To turn units on flick right or left once.

Note:
The units must be connected to the power supply port and powered up (i.e. the car's ignition is on.)

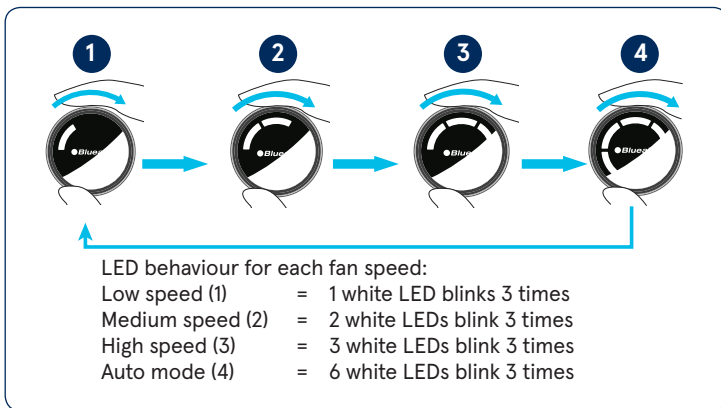
3b.



When the units are turned on, the start up sequence begins and the fan starts in the last setting.
After start up the air quality starts to be analysed and is displayed on the control knob after 9 seconds.

4. Adjusting the fan speed

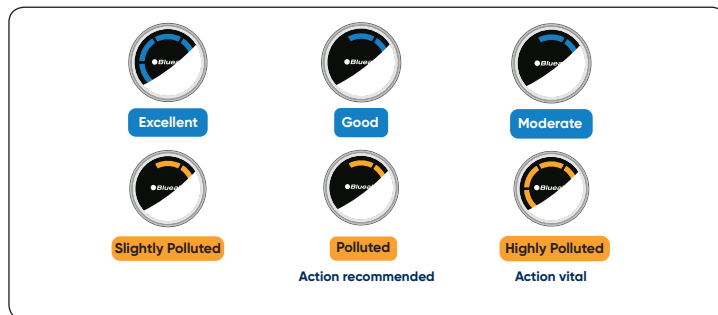
By flicking the control knob to the right the fan speed sequence goes round in a loop from Low to Medium to High to Auto mode to Low again etc.



After 3 blinks the control knob displays the current air quality (see "Air Quality Indication").

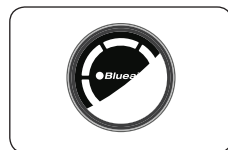


5. Air Quality Indication (AQI)

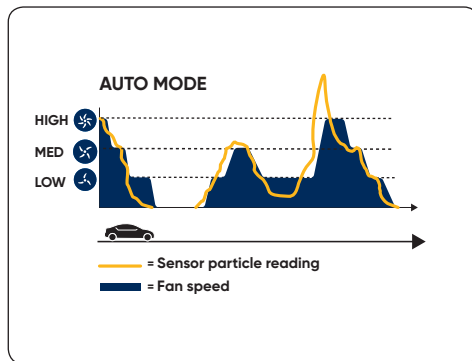


The air quality of particles (PM2.5) is indicated by color on the control knob. Detailed real time data is presented in the Blueair Friend app.

6. Auto mode



When Auto mode is active, the fan is automatically adjusted based on the readings from the built-in laser particle sensor.



Note:

The cleaning time depends on the cabin volume of the cars in question. Blueair Cabin P2iD car air purifier is recommended for use in cars up to large-size.

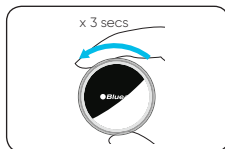
Cabin performance

Car size cleaning time

Cabin P2iD	
SUV (5m ³)	3-4 minutes
Minivan (7m ³)	5-6 minutes

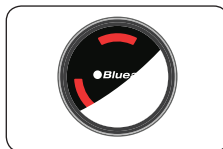


7. Idle mode



Flick the control knob anticlockwise and hold for 3 seconds until the lights are turned off.

8. Notification



3 red LEDs blink in a triangle formation should a notification or error occur (see table below).

Note:

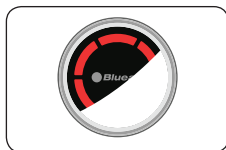
As a safety precaution the units cannot start unless the top cover is installed correctly.

SITUATION	RECOMMENDED ACTION
Top cover open	<ul style="list-style-type: none">• Check the filter is installed correctly• Check that the top cover has been correctly installed
Units are not working - unit is disconnected from the control plug.	Check that control knob is correctly installed and that the cable/connectors are not damaged.
Units are not working - USB charging port overload If an extra USB charging port is powering too many external units - ie phones etc - the power load might be too much for the system and thus it shuts down.	Remove external units until the units work.
General hardware failure	Contact customer service
Other error not indicated by error code. The LEDs on the control knob do not light up even though the units are functioning.	Contact customer service





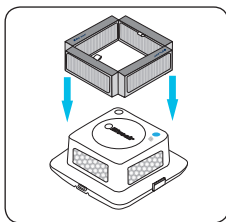
9. Changing the filters



A filter change alert is displayed on the control knob when a filter change is due.

Note:

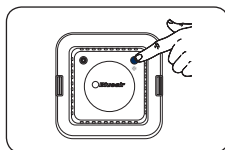
The recommendation of approximately 6 months/180 days between filter changes is based on a usage of 360 hrs during that period (2,5hr * 6 days * 4 weeks * 6 months).



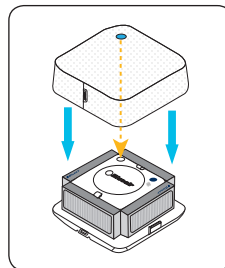
1. Lift off the top covers and mount the new filters onto the purifier base main and extension units.

Note:

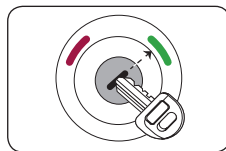
The notification (3 red LEDs) appears as soon as the top covers are removed and remains visible until the top covers are remounted.



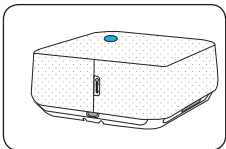
4. Press the filter reset button.



5. Remount the top covers onto the main and extension units.



2. Turn on the car's ignition.



3. Turn on the units - (a blue LED lights up on the top covers indicating the units are powered-up).





Care and maintenance

We recommend regular cleaning in order to keep your units in top condition.

When changing filters

1. Wipe the underside of the top covers clean after removal.
2. Vacuum the air outlets using a soft brush and/or other suitable attachment.
3. Vacuum the small air inlets with a soft brush attachment.

General

1. Wipe the exterior of the units with a soft, clean, damp cloth.
2. Never clean with gasoline, chemical solvents or corrosive material as these agents may damage the surface.
3. Do not allow foreign objects to enter the ventilation or exhaust openings. This may cause electric shock or damage the units.
4. Do not try to repair or adjust any of the electrical or mechanical functions on your Blueair units yourself. Contact your local dealer or Blueair for warranty information.



Environment protection:

Let's protect the environment!

Our products and packaging are sustainably designed and made from recyclable materials. Do not discard the filters or the product with household waste. Bring it to the nearest official waste recycling service.

Help and support

If you have questions about Blueair products, please visit blueair.com.

Warranty information

The Blueair Limited Warranty applies only if the unit is installed, used, and maintained according to the instructions in this manual.





FCC Statement

This device complies with Part 15 of the FCC Rules. Operation is subject to the following two conditions:

(1) This device may not cause harmful interference.

(2) This device must accept any interference received, including interference that may cause undesired operation.

2. Changes or modifications not expressly approved by the party responsible for compliance could void the user's authority to operate the equipment.

Note: This equipment has been tested and found to comply with the limits for a class B digital device, pursuant to Part 15 of the FCC Rules. These limits are designed to provide reasonable protection against harmful interference in a residential installation.

This equipment generates uses and can radiate radio frequency energy and, if not installed and used in accordance with the instructions, may cause harmful interference to radio communications. However, there is no guarantee that interference will not occur in a particular installation. If this equipment does cause harmful interference to radio or television reception, which can be determined by turning the equipment off and on, the user is encouraged to try to correct the interference by one or more of the following measures:

- Reorient or relocate the receiving antenna.
- Increase the separation between the equipment and receiver.
- Connect the equipment into an outlet on a circuit different from that to which the receiver is connected.
- Consult the dealer or an experienced radio/TV technician for help.

This device complies with FCC radiation exposure limits set forth for an uncontrolled environment. This equipment must be installed and operated in accordance with provided instructions and the antenna(s) used for this transmitter must be installed to provide a separation distance of at least 20 cm from all persons.





www.blueair.com

Blueair AB

Karlavägen 108
115 26 Stockholm
Sweden
Tel: +46 8 679 45 00
Fax: +46 8 679 45 45
info@blueair.se

Blueair AB Middle East, Jafza One,

Office No. AB1503
Jebel Ali free Zone, P.O. Box No. 263947
Dubai, United Arab Emirates
Ph : +971 (4)8821244
Email : salesme@blueair.se
Web : www.blueair.com/ae

Blueair Inc.

Suite 1900,
100 N LaSalle Street
Chicago, IL 60602
USA
Tel: +1 888 258 3247
Fax: +1 312 727 1153
info@blueair.com

Blueair India Pvt. Ltd.

Registered Office:
S-237, Greater Kailash-11,
New Delhi 110048
India
Tel: +91-124-4646119
info@blueair.in; www.blueair.com/in
Toll free info number: 18008331188

Blueair (Shanghai)

Trading Co. Ltd.
10th floor City Gateway
No. 398 North Caoxi Road
Xuhui Distr, Shanghai,
China
Tel: +86 21 6091 0981
Fax: +86 21 6091 0989
info@blueair.cn

501092_P2iD_EN_UM_REV01

