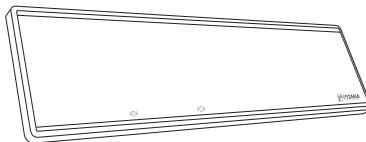




FCC ID: 2ARI5-MB1001



MagBar User Manual

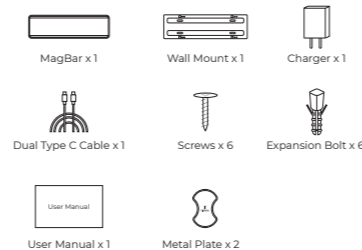
Contents

- Compatibility Notice 1
- Package Includes 1
- Quick Guide 2
- Specs 8
- Warranty 9
- Exclusion 9
- Important 10
- Customer Support 10
- FCC Warning 11

Compatibility Notice

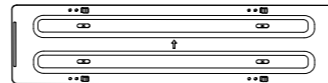
- The PITAKA MagBar will only wirelessly charge Qi supported phones with a proper PITAKA MagCase (Pro), including MagCase (Pro) for iPhone 8/8 Plus/X/Xs/XR/Xs Max and Samsung Galaxy S10e/S10/S10+/S9/S9+/S8/S8+/S7 edge.
- Your phone cannot be attached on the MagBar when you use an other case or stick metal plates on your phone.
- Do not use the MagBar to charge your wireless charging devices that are not Qi-compatible.

Package Contains



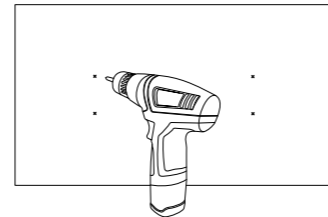
Installation Guide

- 1, Choose a proper position on the wall to install the MagBar.
- 2, Attach the MagBar wall mount to the wall and mark the four holes on the wall with a pencil.



Notice: Make sure the side without the arrow is faced to the wall and the arrow is faced up.

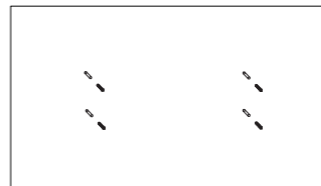
- 3, Use a percussion drill to punch the holes in the position where the marks are previously marked.



Notice: If you are installing the MagBar to concrete/brick wall, it's recommended to use a 6mm-diameter drill and the recommended drilling depth is 30mm;

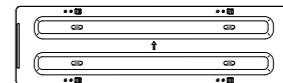
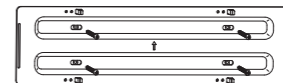
If you are installing the MagBar to wood/ plasterboard wall, it's recommended to use a 2mm-diameter drill and the recommended drilling depth is 5mm.

- 4, Hammer the expansion bolt into the wall hole. Make sure they are flushed with the wall surface.

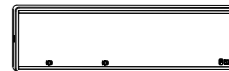


Notice: If you are installing the MagBar to wood/ plasterboard wall, you can just skip this step.

- 5, Align the wall mount hole with the punching position. Keep the side with the arrow face to the user and the arrow should face up. Use a screwdriver to install the screws and fasten the wall mount.



- 6, Align the MagBar with the wall mount and buckle up the two. Press down the MagBar and slide it to the left. Then MagBar Installation is completed.

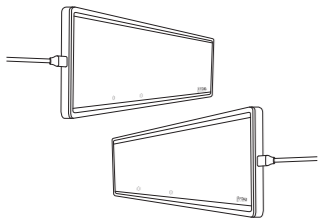


Notice: If you are not using the PITAKA MagCase. You can attach the metal plate (Included in the package. Scan below QR code for the alignment paper to help with locating the metal plate.) to the back of your phone case or phone to be compatible with it. But we strongly recommend you to use MagCase together with MagBar to optimize the seamless carrying experience. Use the code "PITAKA10" (expires after Dec 31, 2019) to get a 10% discount for your MagCase now.

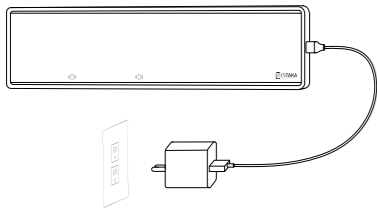


Using Guide

- **Step1:** Plug one end of the charging cable into any charging port on the left or right of the MagBar.

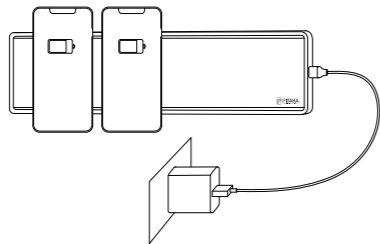


- **Step 2:** Plug the other end of the charging cable into the charger.

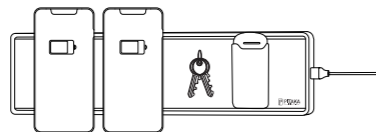


6

- **Step 3:** The mobile phone can be wirelessly charged by being placed on the wireless charging area.



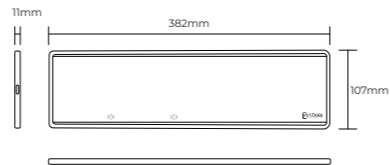
- **Step 4:** Freely attach your everyday carry essentials on the MagBar, including the keys, AirPodPal, etc.



7

Specs

Item	Specification
Rated Input Voltage	5V~9V
Rated Input Current	3A
Rated Output Voltage	DC 5V/1A
Rated Output voltage	DC 9V/1.1A
Transmission Distance	≤ 8mm
Transfer Efficiency	75% Max
Operating Temperature	-10 C ~30 C
Storage Temperature	-20 C ~60 C
Working Frequency	125KHz



8

Warranty

The PITAKA MagBar is warranted for 12 months from the date of purchase.

The MagBar is warranted to be free defects in materials and function under regular use for the lifetime of the product. A defect is defined as an imperfection or flaw that is produced by a manufacturing error, including malfunction of wireless charging or surface defect, etc. This warranty is non-transferable and covers only the original end-user purchaser. PITAKA will only authorize the warranty claim if the product was purchased from the official store or authorized dealer.

MODIFICATION: Any change or modification of this device will void the warranty

Exclusion

Damages don't cover those resulting from abuse, not correctly maintained, alteration or misuse (including disassemble, drops), abnormal wear and tear, cosmetic damages that do not affect the functionality.

9

Important

Read all instructions and warnings before using this product. Improper use may result in product damage, excess heat, toxic fumes, fire or explosion, for which damages PITAKA is not responsible.

1. In order to achieve the best charging effect, please place your device at the correct position to charge.
2. This charger is only suitable for indoor use, beware of rain and exposure.
3. Please use the original charger to charge or other adapter with output over 30W.
4. Avoid placing metal objects in the working area when charging, and do not let the charger drop off or put heavy objects on it.
5. It is recommended to unplug or turn off the power after charging is completed.
6. Please never connect power supply to your MagBar with the both sides Type C connectors at the same time. Improper operation resulting in the malfunction of the MagBar is the sole responsibility of the purchaser.

Customer Support

Phone: +852 9202 6223
E-mail: support@ipitaka.com
Website: www.ipitaka.com

10

FCC WARNING

This device complies with part 15 of the FCC Rules. Operation is subject to the following two conditions:

- (1) this device may not cause harmful interference,
- (2) this device must accept any interference received, including interference that may cause undesired operation. Any changes or modifications not expressly approved by the party responsible for compliance could void the user's authority to operate the equipment.

NOTE: This equipment has been tested and found to comply with the limits for a Class B digital device, pursuant to Part 15 of the FCC Rules. These limits are designed to provide reasonable protection against harmful interference in a residential installation. This equipment generates, uses and can radiate radio frequency energy and, if not installed and used in accordance with the instructions, may cause harmful interference to radio communications. However, there is no guarantee that interference will not occur in a particular installation.

If this equipment does cause harmful interference to radio or television reception, which can be determined by turning the equipment off and on, the user is encouraged to try to correct the interference by one or more of the following measures:

- Reorient or relocate the receiving antenna.
- Increase the separation between the equipment and receiver.

RF Exposure: A distance of 15 cm shall be maintained between the antenna and users, and the transmitter may not be co-located with any other transmitter or antenna.

11

- Connect the equipment into an outlet on a circuit different from that to which the receiver is connected.
- Consult the dealer or an experienced radio/TV technician for help.

The device has been evaluated to meet the general RF exposure requirement.

FCC ID: 2AR15-MB1001



12