

PushLL

PushLL · Intelligent Delivery Receiving Digital Venous Lock System

Federal Communications Commission (FCC) Statement

This device complies with part 15 of the FCC Rules. Operation is subject to the following two conditions: (1) This device may not cause harmful interference, and (2) this device must accept any interference received, including interference that may cause undesired operation.

Note: This equipment has been tested and found to comply with the limits for a Class B digital device, pursuant to part 15 of the FCC Rules. These limits are designed to provide reasonable protection against harmful interference in a residential installation. This equipment generates, uses and can radiate radio frequency energy and, if not installed and used in accordance with the instructions, may cause harmful interference to radio communications. However, there is no guarantee that interference will not occur in a particular installation. If this equipment does cause harmful interference to radio or television reception, which can be determined by turning the equipment off and on, the user is encouraged to try to correct the interference by one or more of the following measures:

- Reorient or relocate the receiving antenna.
- Increase the separation between the equipment and receiver.
- Connect the equipment into an outlet on a circuit different from that to which the receiver is connected.
- Consult the dealer or an experienced radio/TV technician for help.

Warning: Changes or modifications made to this device not expressly approved by Guangzhou Pushll Intellectualized Science&Technology Co., Ltd. may void the FCC authorization to operate this device.

Note: The manufacturer is not responsible for any radio or TV interference caused by unauthorized modifications to this equipment. Such modifications could void the user's authority to operate the equipment.

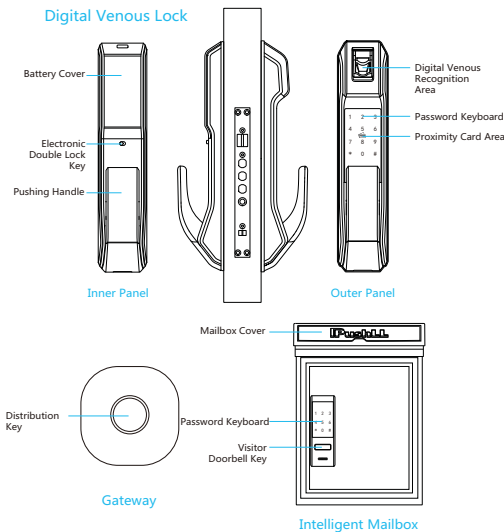
400-888-4690
www.pushll.com

Guangzhou Pushll Intelligent Technology Co., Ltd. owns the right to final interpretation of the Manual.

Product Introduction

The delivery receiving digital venous lock system is comprised of intelligent mailbox, digital venous lock and gateway. The intelligent mailbox can store delivery with photo shooting and voice talk functions. Visitors or mailmen can talk to the owner by pressing the visitor button on the panel of the intelligent mailbox to open digital venous lock and mailbox lock from distance.

Product Drawing



Introduction to Functions

- Digital venous unlocking: the built-in high precision digital venous recognition module facilitates faster and more precise recognition to avoid the situation in which unlocking is unavailable when traditional fingerprint module loses its fingerprint or has water on it.
- Temporary password unlocking: Request the lock to generate an encrypted temporary password valid for 24h via App and input the 6-digit temporary password to unlock. It may be used repetitively in the validity to avoid password leaking, which is safer.
- Unlocking record and special attention: unlocking record will be uploaded for each time it is unlocked. There is unlocking date and time in the App in details for you to check the real-time unlocking record even if you are not home. As for very important user's unlocking, you may pay special attention and receive prompt message from the App each time the user unlocks it. Besides, there will be separate display of unlocking record among users of special attention in the App.
- Remark user: You can remark each user with a nickname you are familiar with. The nickname will display in the unlocking record and prompt message. (It should be operated in the App)
7. Equipment sharing: our equipment supports sharing to friends and family. Click the sharing button on the top right corner of the user management function interface of the App to enter sharing interface. Share in accordance with prompt message. After the user to share the equipment agrees, all equipment functions may be shared for use. (Note: only the administrator of the equipment may use the share functions and the user to share the equipment must register and log in "Pushll Intelligent" App, or the prompt message on sharing may not be received).
8. Voice talk and photo shooting record: when a visitor click the visitor button on the mail box, a photo of the visitor will be taken and saved to the server. The App will receive a prompt message on visitors and the App interface will display the visitor's photo that has just been taken. Click answer for voice talk with the mailbox.

Basic Parameters

Digital Venous Lock

Product Model	P1800-82	Power Type	1.5V (AA Battery)* 8
Living Organism Recognition	Digital Vein	Number of Cell Phones Supported	It supports 4 users to use at the same time
Emergency Lock Cylinder	Super B-Level Lock Cylinder	Emergency Power	Micro USB Port, 5VDC
Password Length	6 digits	Suitable Door	Wooden Door, Security Door and Copper Door
Unlocking Method	Digital vein, password, card, key and call phone	Double lock function	Electronic double lock

Gateway

Power Type	5VDC	Environment Temperature	-20°C~50°C
Relative Humidity	15%~90%RH	Wireless Communication Mode	WiFi (2.4GHz)

Intelligent Mailbox

Product Model	P1800-81	Power Type	1.5V (AA Battery)* 8
Unlocking Method	Password and Cell Phones	Number of Cell Phones Supported	It supports 4 users to use at the same time
User Password Length	6 digits	Emergency Power	Micro USB Port, 5VDC
Wireless Communication Mode	WiFi (2.4GHz)	Dimensions (mm)	291 (W)*413 (H)*130 (D)

Quick Setting

1. Install Pushll Intelligent App on your cell phone: scan the QR code to the right or visit Android Market or Apple App Store to download Pushll Intelligent App.
2. Connect to the digital venous lock power and add digital venous lock: install battery on the digital venous lock and connect the gateway to the matching power adapter. After the power is through, the indicator will turn to red blinking. Access distribution mode and launch Pushll Intelligent App to scan digital venous lock QR code by hint to add.
3. Connect to mailbox power and add mailbox: install battery on mailbox and launch Pushll Intelligent App to scan mailbox QR code by hint to add.



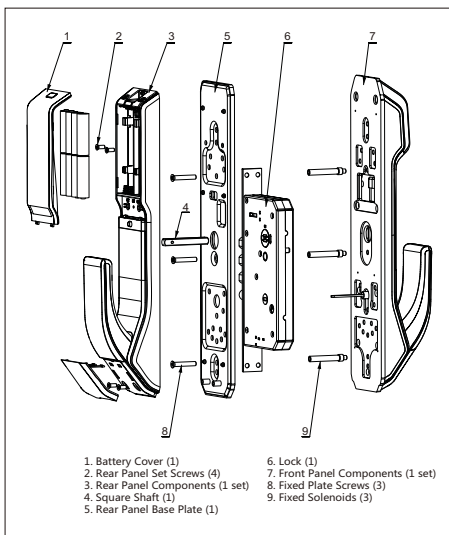
Scan QR Code to Install App

Note: For other problems, please see the help text in Pushll Intelligent App settings

Product Inventory and Installation Diagram

Please check with the following inventory carefully after opening the package case and ask from us or the agent is anything is missing.

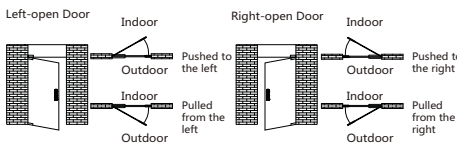
序号	Name	Number of Locks Each Set
1	Front Panel (including silicone pad)	1
2	Rear Panel	1
3	Lock	1
4	Installation Fitting Pack	1
5	User Manual	1
6	Qualification Certificate	1
7	Product Quality Warranty Card	1
8	Key	2
9	Battery Pack	2
10	IC Card	2
11	Rear Panel Base Plate (including silicone pad)	1
12	Trepanning Template	1
13	Gateway	1
14	Intelligent Mailbox	1



Installation Precautions of Digital Venous Lock

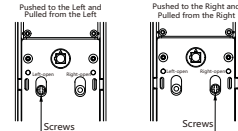
1. Confirmation of Front Door Installation Direction

The digital venous lock may be applied to door that is pulled from the left, pushed to the left, pulled from the right and pushed to the right.



2. Reversal of Left-open and Right-open Doors

Please choose where to mount the screws in according with the door opening direction.



Attention:

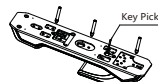
1. Choose fitting pack of different specifications based on door thickness.
2. The default fitting pack is applicable to 40-90mm thick door. Please contact us if it is of other specification.

Digital Venous Lock Installation Procedure

1. Drill a hole on the door based on the trepanning template and put the lock in the doorframe.
2. Fixate the lock and screw it tight with four screws.



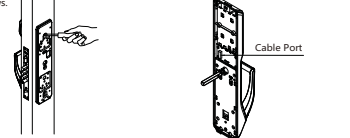
3. Find the corresponding screw hole based on the existing holes on the door and install fixed solenoid.



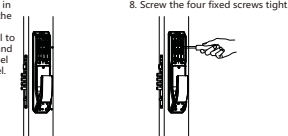
Attention:

The default key pick is only suitable for 40mm-90mm thick door. If the door is too thick, another key pick shall be matched.

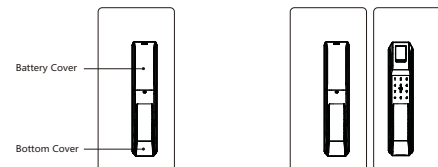
5. Put the rear panel base plate closely against the inner panel and screw it tight with fixed screws.
6. Insert the square shaft in the rear panel.



7. Insert the front panel cable in the corresponding socket of the rear panel. Then align the square shaft on the rear panel to the turning port on the lock and insert it in to put the rear panel closely against the inner panel.
8. Screw the four fixed screws tight.



9. Install batteries and close battery cover. Press the bottom cover in firmly to complete digital venous lock installation.
10. Try to push the rear panel handle to see if it is smooth, and check if all parts are connected perfectly.



Attention:

When pulling the knob to close the door, pay attention to that the hand shouldn't be on the other side of the doorframe to protect your hand. The hand shall be placed on the side far from the door frame or top of it to close the door. Please see the illustration for the correct operation.

