



Dome Removed Views

Antennas and Main Shielded Enclosure Revealed, Side 1 of 4

Narrow rod on top earths/grounds the lightning cap on top. It has no other function.



Dome Removed, Antenna and Main Shielded Enclosure Revealed, Side 2 of 4



Dome Removed, Antenna and Main Shielded Enclosure Revealed, Side 3 of 4



Dome Removed, Antenna and Main Shielded Enclosure Revealed, Side 4 of 4



S-Band Antenna, Omnidirectional Slot Array



X-Band Antenna, Omnidirectional Slot Array

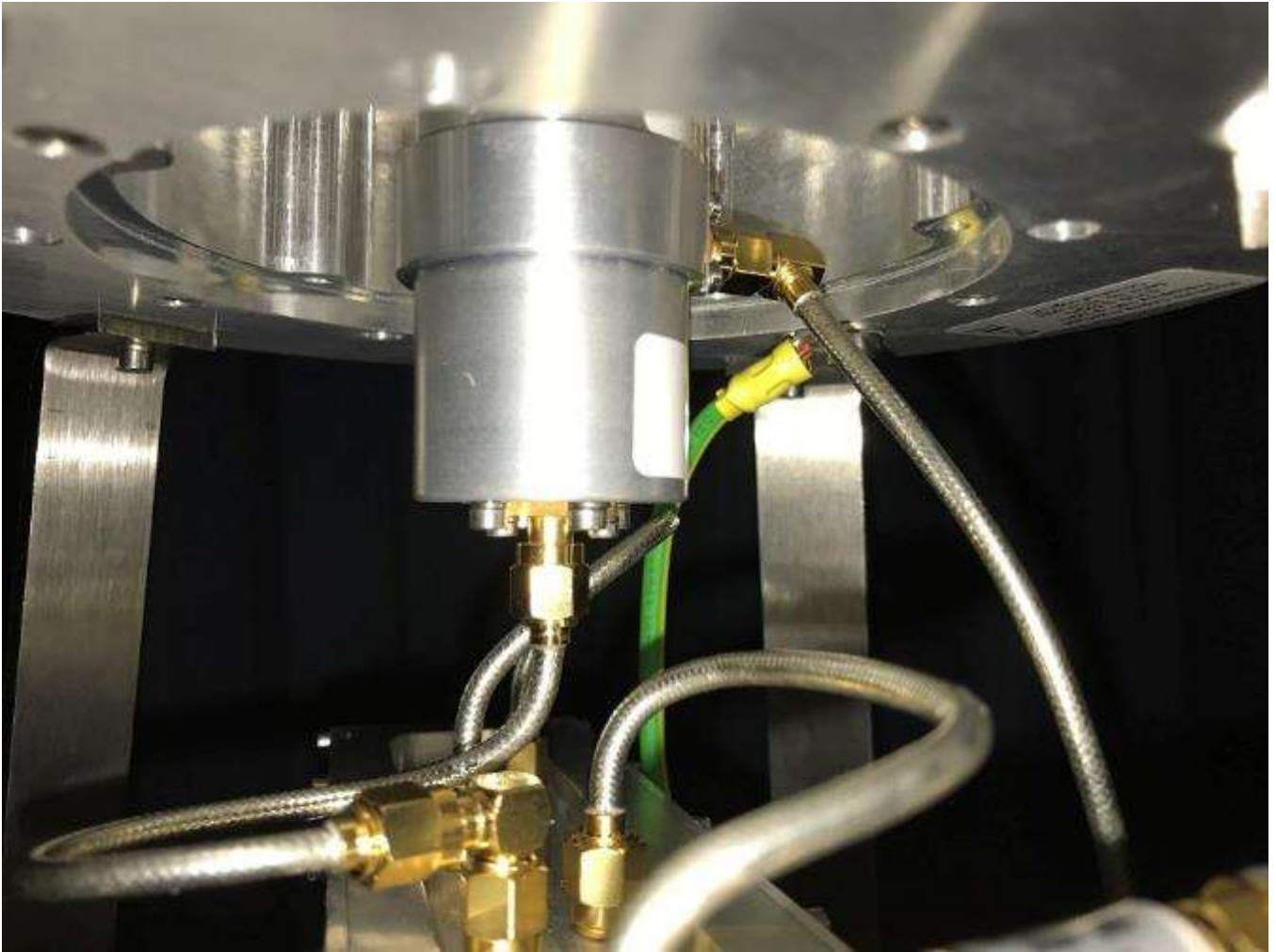


RF Cabling

Cables from section to section of main enclosure.

Cables from main enclosure to antennas.

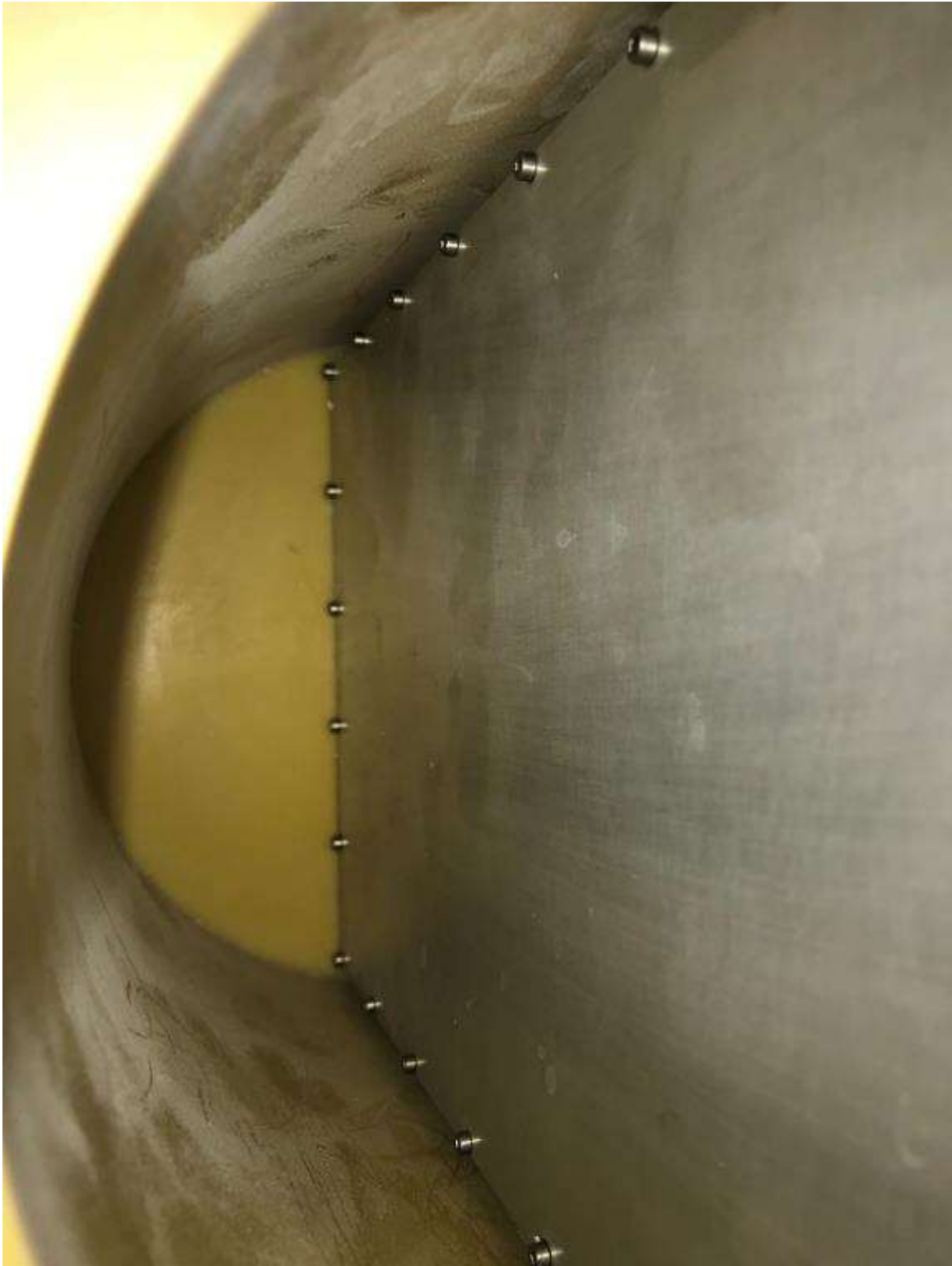
SMA filters shown are removed during measurements.



**Another view of RF cables connecting to antennas.
Green ground/earth bonding cable visible.**



Wiring, power and I/O, side of main enclosure, with earth/grounding cable.



Far side of main enclosure.
