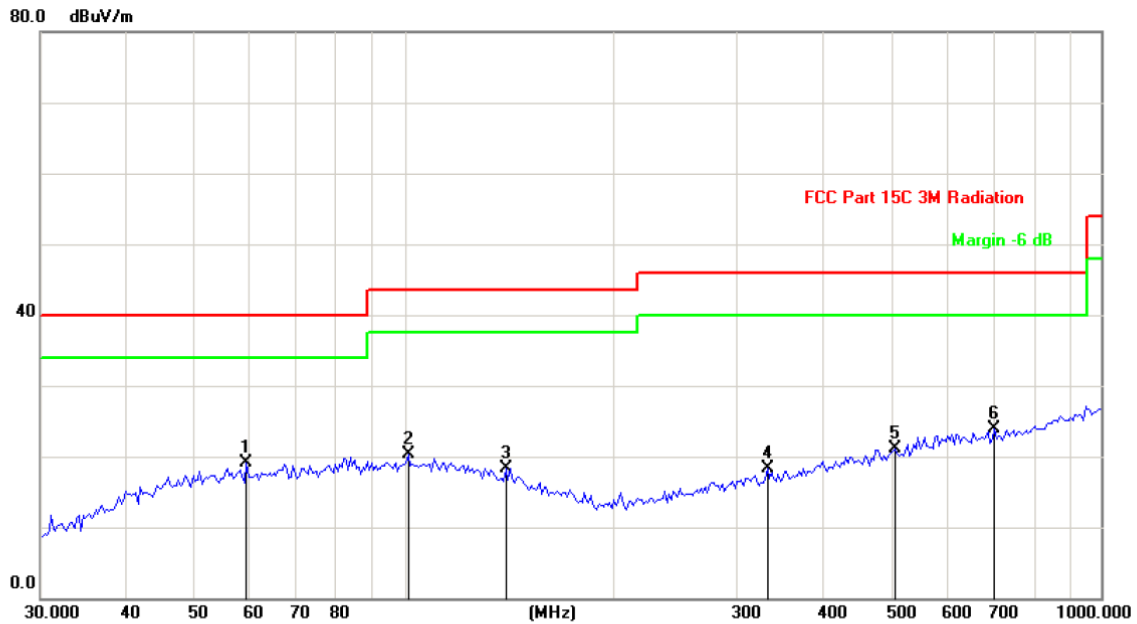


Vertical:



Site: Polarization: **Vertical** Temperature: 25
 Limit: FCC Part 15C 3M Radiation Power: DC 3.7V Humidity: 55 %

No.	Mk.	Freq. MHz	Reading Level dBuV	Correct Factor dB	Measure- ment dBuV/m	Limit dB/m	Over dB	Detector
1	*	59.3133	31.33	-12.22	19.11	40.00	-20.89	peak
2		101.1797	28.36	-8.11	20.25	43.50	-23.25	peak
3		139.7909	34.43	-16.07	18.36	43.50	-25.14	peak
4		331.7858	28.35	-10.13	18.22	46.00	-27.78	peak
5		505.7891	28.40	-7.35	21.05	46.00	-24.95	peak
6		703.7314	29.25	-5.40	23.85	46.00	-22.15	peak

Note: 1. The low frequency, which started from 9KHz~30MHz, was pre-scanned and the result which was 20dB lower than the limit line per 15.31(o) was not reported

2. Measurements were conducted in all three channels (high, middle, low) and three modulation (GFSK, Pi/4 DQPSK, 8DPSK) and the worst case Mode (Highest channel and 8DPSK) was submitted only.

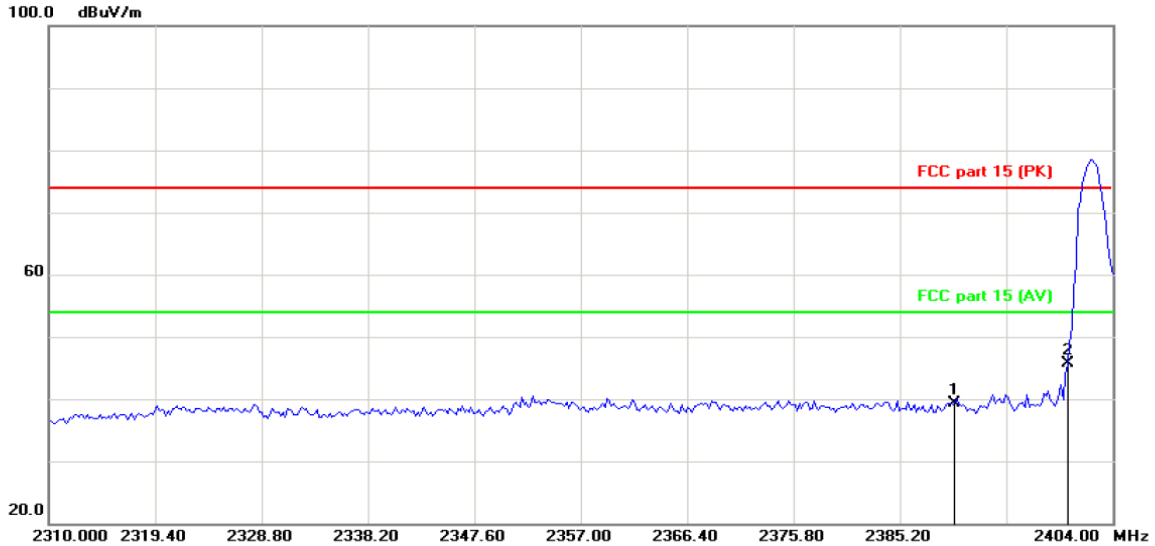
3. Freq. = Emission frequency in MHz
 Measurement (dBuV/m) = Reading level (dBuV) + Corr. Factor (dB)
 Correction Factor = Antenna Factor + Cable loss - Pre-amplifier
 Limit (dBuV/m) = Limit stated in standard
 Margin (dB) = Measurement (dBuV/m) - Limits (dBuV/m)
 Any value more than 10dB below limit have not been specifically reported.

* is meaning the worst frequency has been tested in the test frequency range

Test Result of Radiated Spurious at Band edges

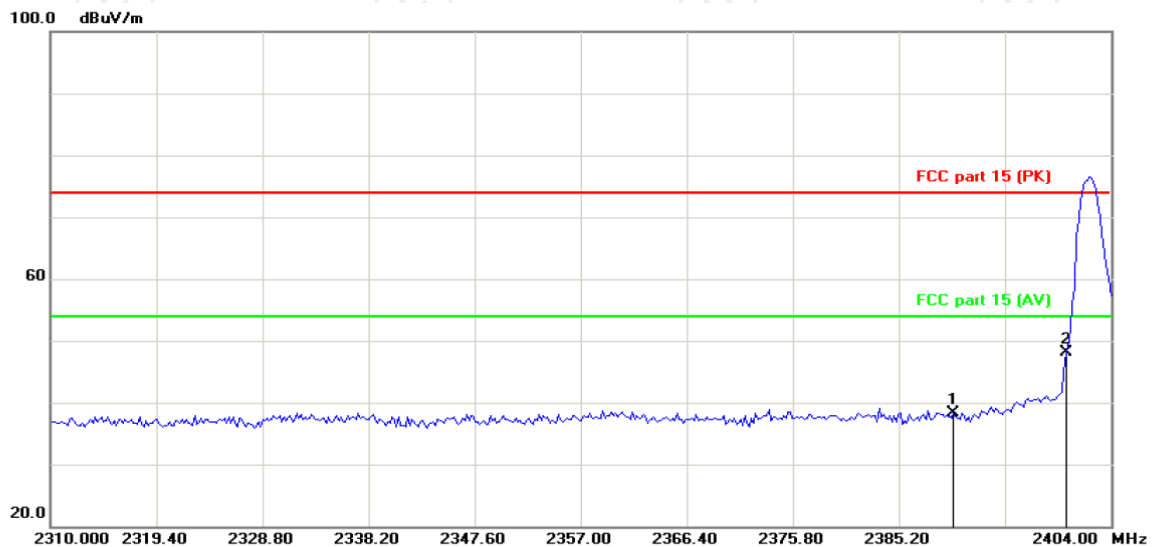
Lowest channel 2402:

Horizontal:



Site: Polarization: **Horizontal** Temperature: 25
Limit: FCC part 15 (PK) Power: DC 3.7V Humidity: 55 %

Vertical:

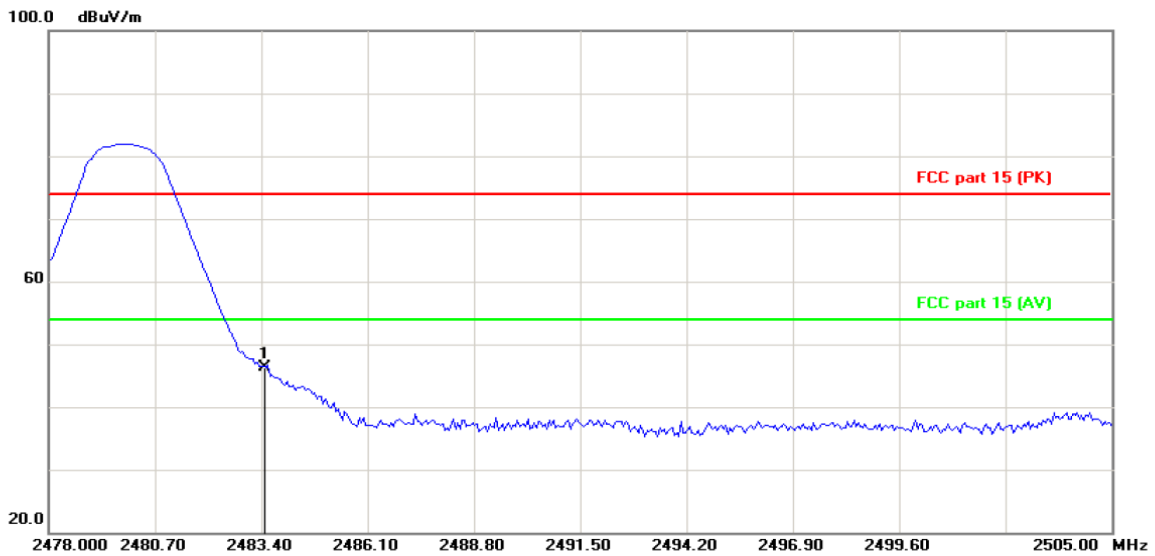


Site: Polarization: **Vertical** Temperature: 25
Limit: FCC part 15 (PK) Power: DC 3.7V Humidity: 55 %

Frequency (MHz)	Ant. Pol. H/V	Peak (dBuV/m)	Dutycycle factor (dB/m)	AV (dBuV/m)	Peak limit (dBuV/m)	AV limit (dBuV/m)	PK Margin (dB)	AVG Margin (dB)
2390	H	39.27	-2.10	37.17	74	54	-34.73	-16.83
2400	H	45.80	-2.10	43.70	74	54	-28.20	-10.30
2390	V	38.39	-2.10	36.19	74	54	-35.61	-17.81
2400	V	48.19	-2.10	46.09	74	54	-25.81	-7.91

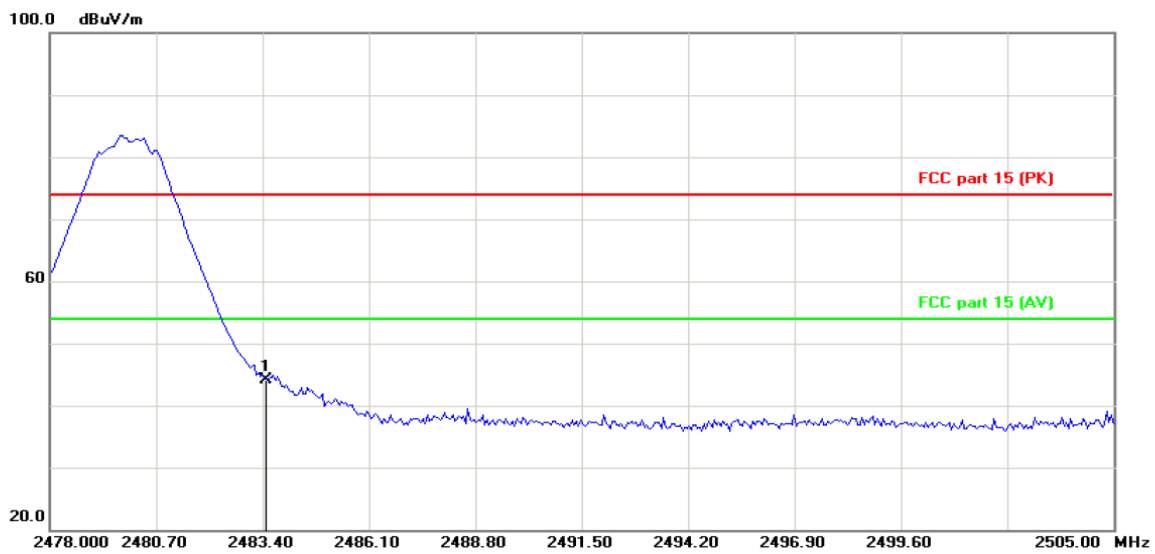
Highest channel 2480:

Horizontal:



Site: _____ Polarization: **Horizontal** Temperature: 25
 Limit: FCC part 15 (PK) Power: DC 3.7V Humidity: 55 %

Vertical:



Site: _____ Polarization: **Vertical** Temperature: 25
 Limit: FCC part 15 (PK) Power: DC 3.7V Humidity: 55 %

Frequency (MHz)	Ant. Pol. H/V	Peak (dB μ V/m)	Dutycycle factor (dB/m)	AV (dB μ V/m)	Peak limit (dB μ V/m)	AV limit (dB μ V/m)	PK Margin (dB)	AVG Margin (dB)
2483.5	H	46.35	-2.10	44.25	74	54	-27.65	-9.75
2483.5	V	44.19	-2.10	42.09	74	54	-29.81	-11.91

Note: Measurements were conducted in all three modulation (GFSK, Pi/4 DQPSK, 8DPSK), and the worst case Mode (8DPSK) was submitted only.

Above 1GHz

Modulation Type: 8DPSK									
Low channel: 2402 MHz									
Frequency (MHz)	Ant. Pol. H/V	Peak reading (dB μ V)	AV reading (dB μ V)	Correction Factor (dB/m)	Emission Level		Peak limit (dB μ V/m)	AV limit (dB μ V/m)	Margin (dB)
					Peak (dB μ V/m)	AV (dB μ V/m)			
4804	H	45.81	---	0.66	46.47	---	74	54	-7.53
7206	H	36.99	---	9.5	46.49	---	74	54	-7.51
---	H	---	---	---	---	---	---	---	---
4804	V	44.67	---	0.66	45.33	---	74	54	-8.67
7206	V	37.58	---	9.5	47.08	---	74	54	-6.92
---	V	---	---	---	---	---	---	---	---

Middle channel: 2441 MHz									
Frequency (MHz)	Ant. Pol. H/V	Peak reading (dB μ V)	AV reading (dB μ V)	Correction Factor (dB/m)	Emission Level		Peak limit (dB μ V/m)	AV limit (dB μ V/m)	Margin (dB)
					Peak (dB μ V/m)	AV (dB μ V/m)			
4882	H	47.42	---	0.99	48.41	---	74	54	-5.59
7323	H	38.43	---	9.87	48.3	---	74	54	-5.70
---	H	---	---	---	---	---	---	---	---
4882	V	46.71	---	0.99	47.7	---	74	54	-6.30
7323	V	38.29	---	9.87	48.16	---	74	54	-5.84
---	V	---	---	---	---	---	---	---	---

High channel: 2480 MHz									
Frequency (MHz)	Ant. Pol. H/V	Peak reading (dB μ V)	AV reading (dB μ V)	Correction Factor (dB/m)	Emission Level		Peak limit (dB μ V/m)	AV limit (dB μ V/m)	Margin (dB)
					Peak (dB μ V/m)	AV (dB μ V/m)			
4960	H	46.36	---	1.33	47.69	---	74	54	-6.31
7440	H	36.47	---	10.22	46.69	---	74	54	-7.31
---	H	---	---	---	---	---	---	---	---
4960	V	48.24	---	1.33	49.57	---	74	54	-4.43
7440	V	36.66	---	10.22	46.88	---	74	54	-7.12
---	V	---	---	---	---	---	---	---	---

Note:

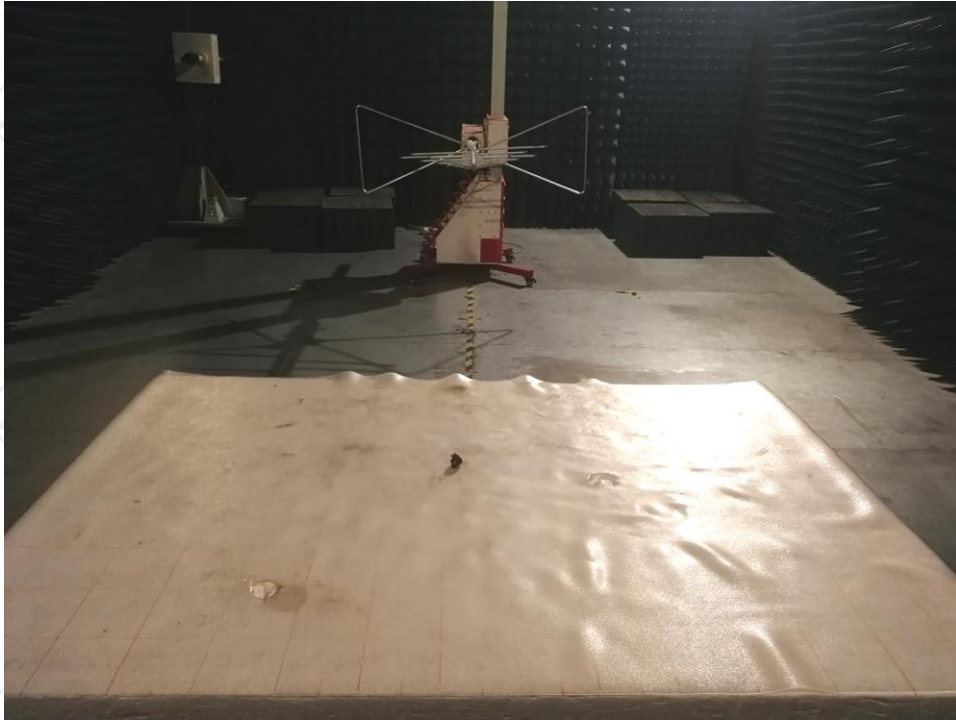
1. Emission Level=Peak Reading + Correction Factor; Correction Factor= Antenna Factor + Cable loss – Pre-amplifier
2. Margin (dB) = Emission Level (Peak) (dB μ V/m)-Average limit (dB μ V/m)
3. The emission levels of other frequencies are very lower than the limit and not show in test report.
4. Measurements were conducted from 1 GHz to the 10th harmonic of highest fundamental frequency.
5. Data of measurement shown "----" in the above table mean that the reading of emissions is attenuated more than 20 dB below the limits or the field strength is too small to be measured.
6. Measurements were conducted in all three modulation (GFSK, Pi/4 DQPSK, 8DPSK), and the worst case Mode (8DPSK) was submitted only.
7. All the restriction bands are compliance with the limit of 15.209.

Appendix A: Photographs of Test Setup

Product: Bluetooth Headset

Model: NT01A

Radiated Emission

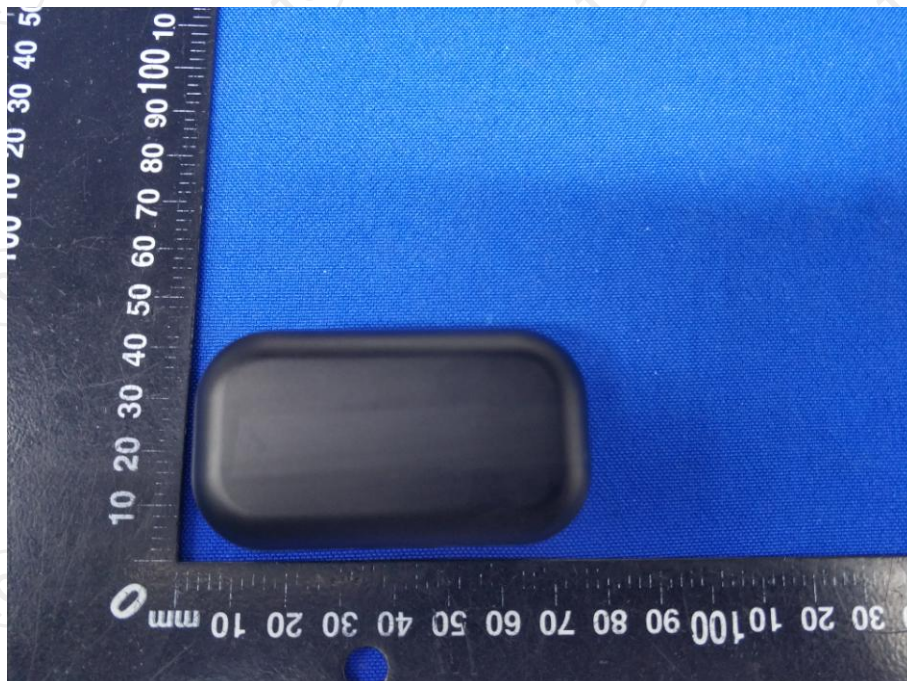


Conducted Emission



**Appendix B: Photographs of EUT
Product: Bluetooth Headset**

**Model: NT01A
External Photos**



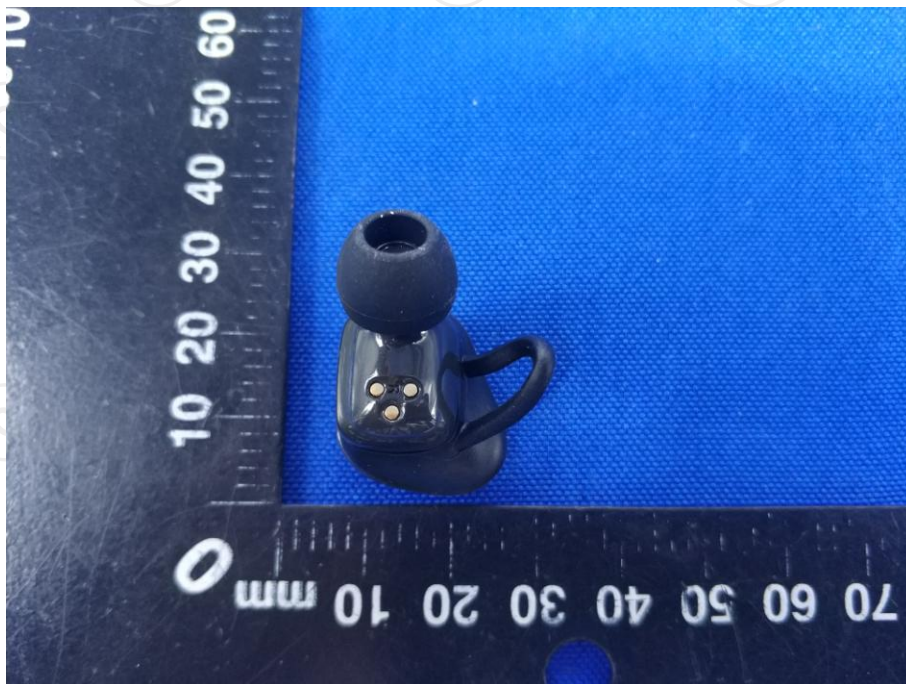








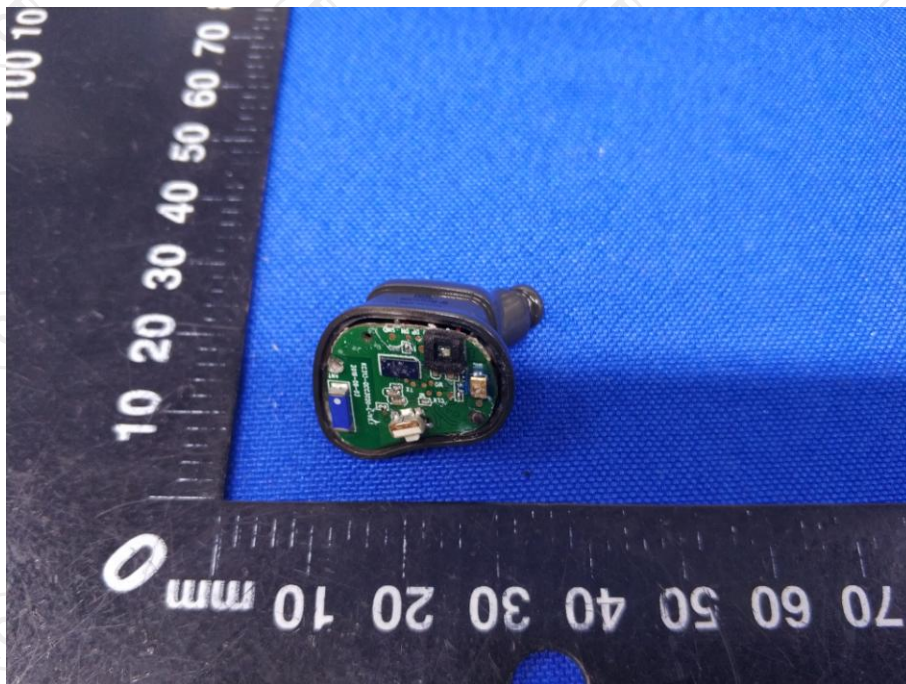


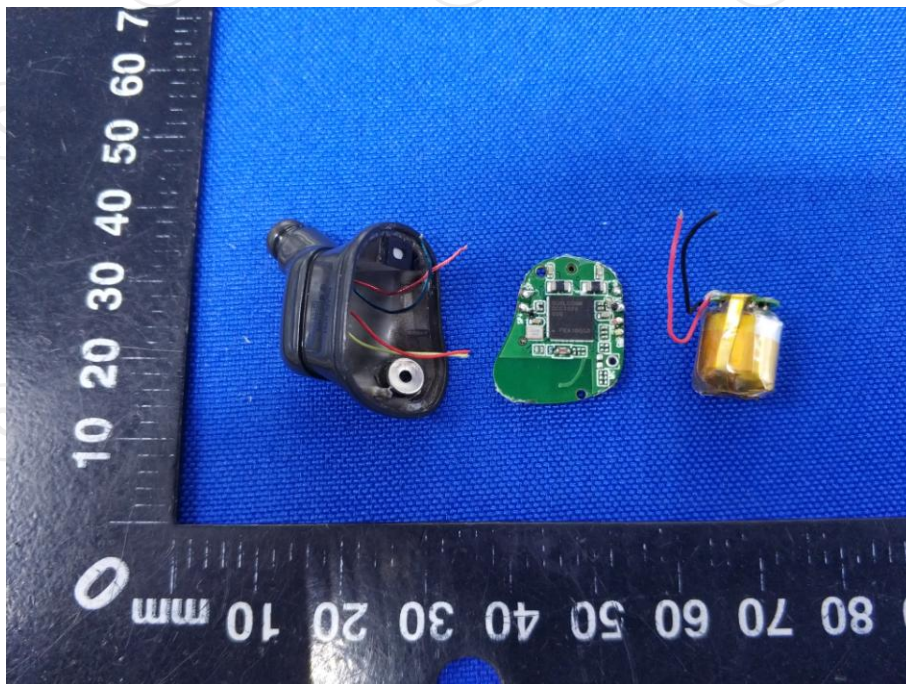


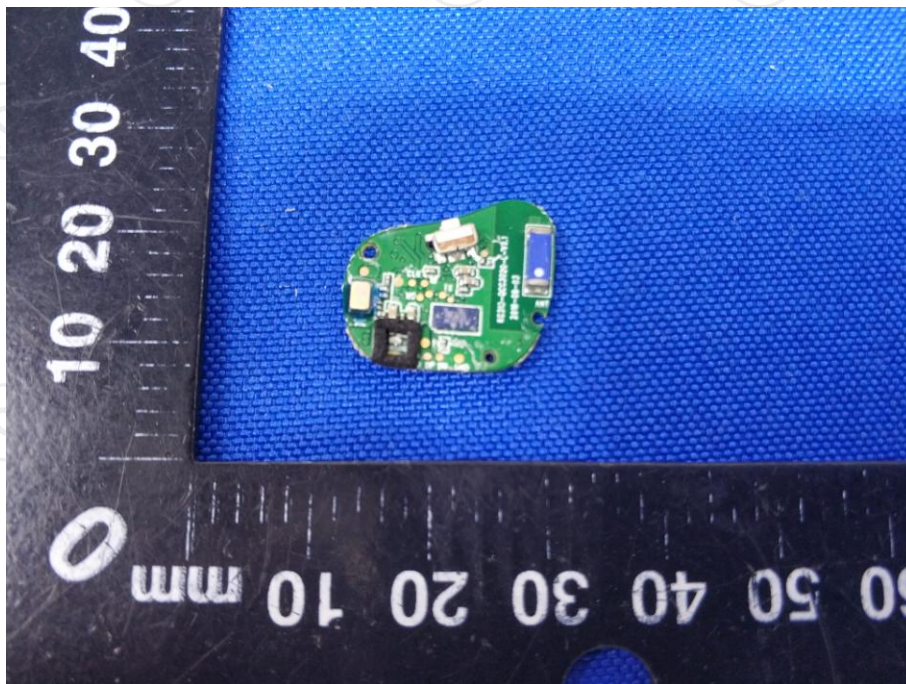
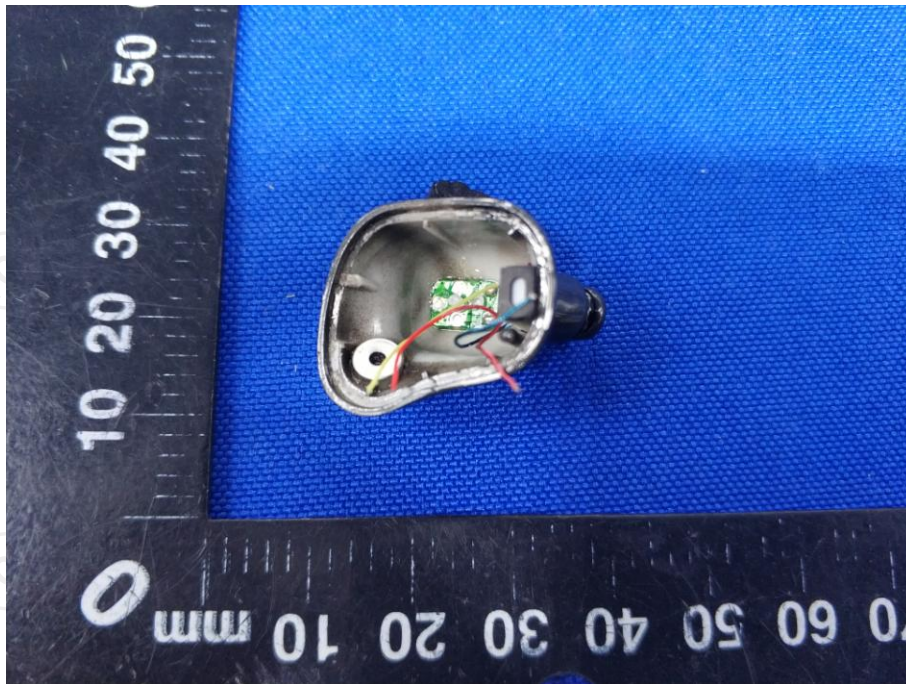


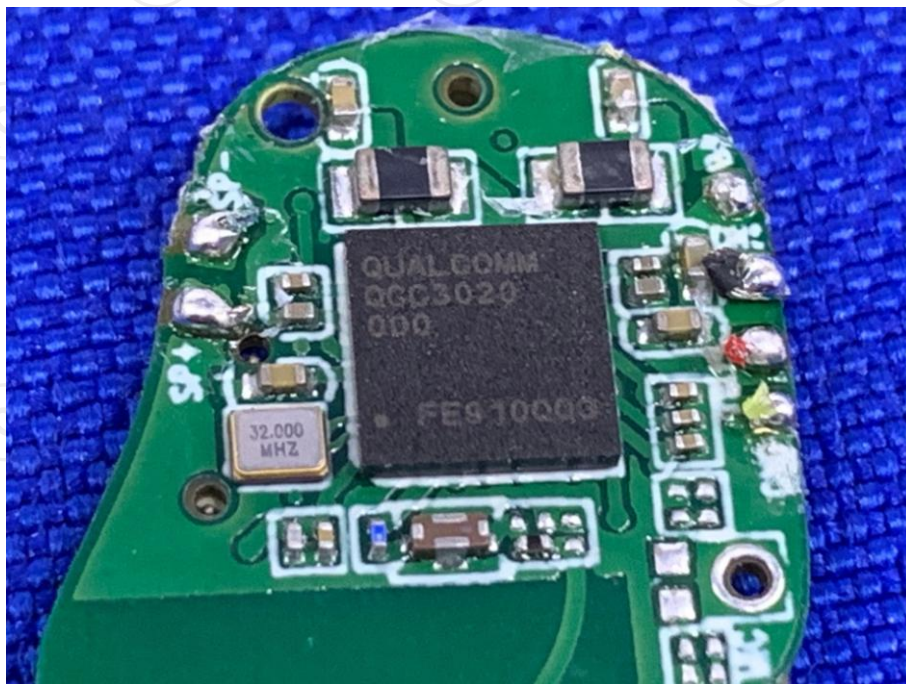
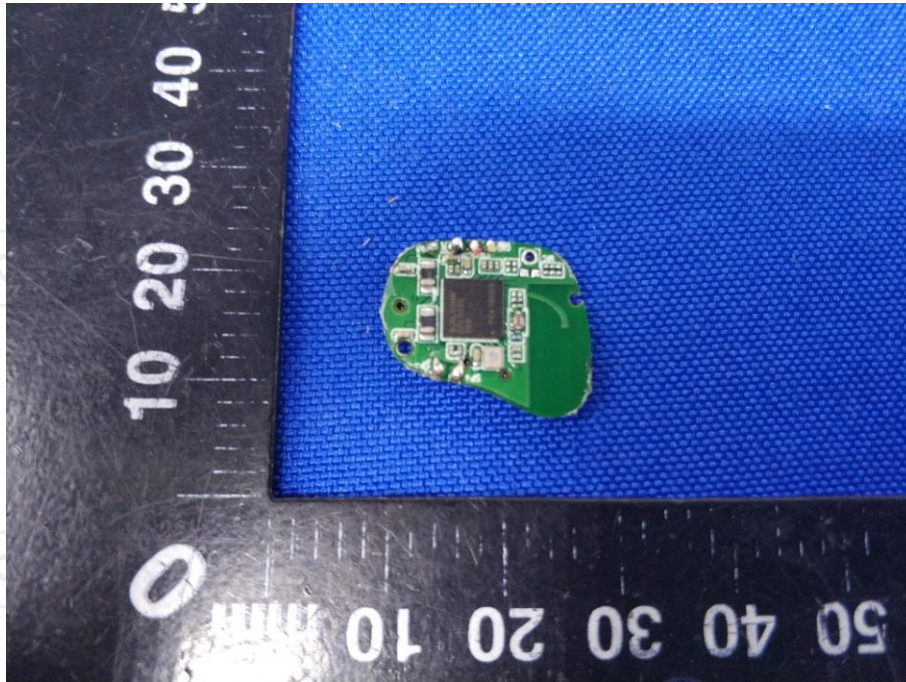


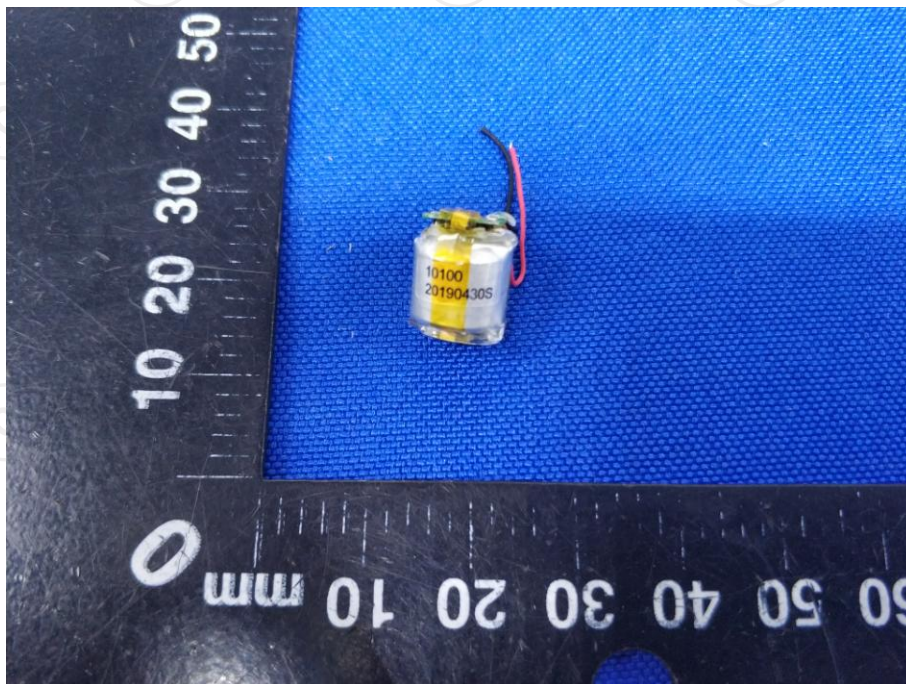
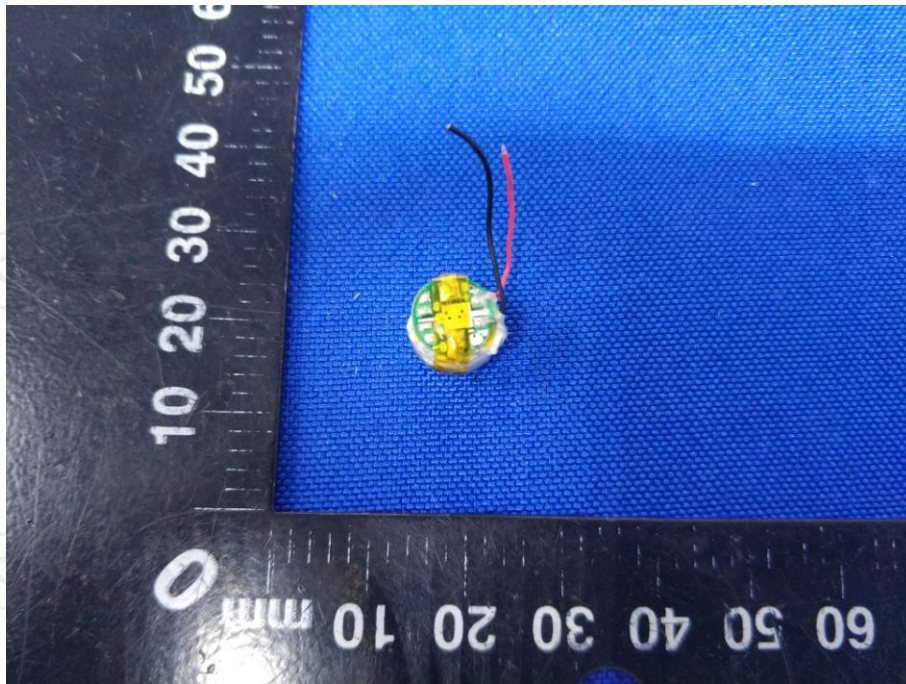
Product: Bluetooth Headset
Model: NT01A
Internal Photos

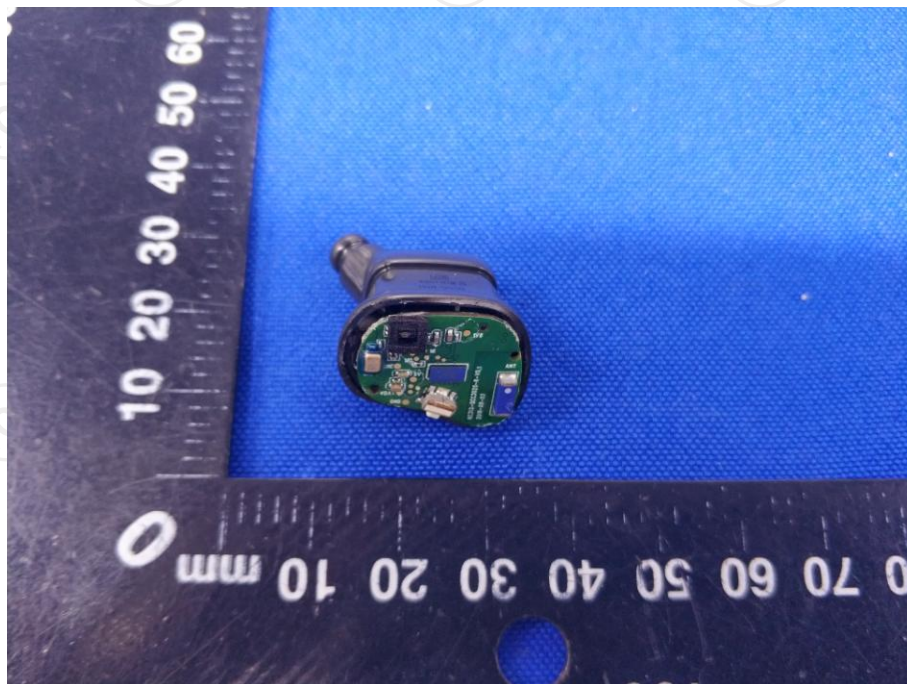


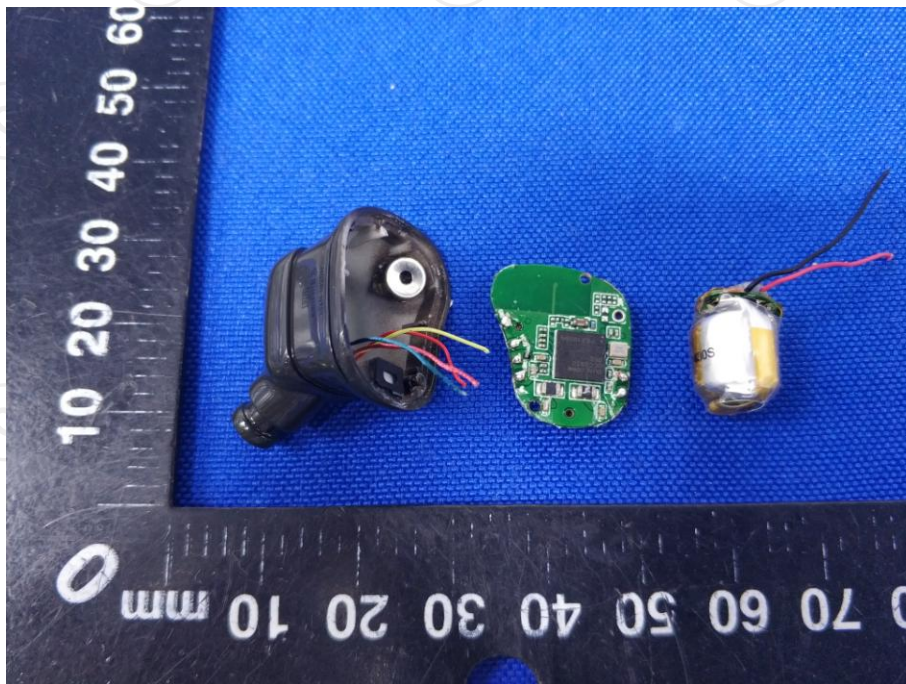


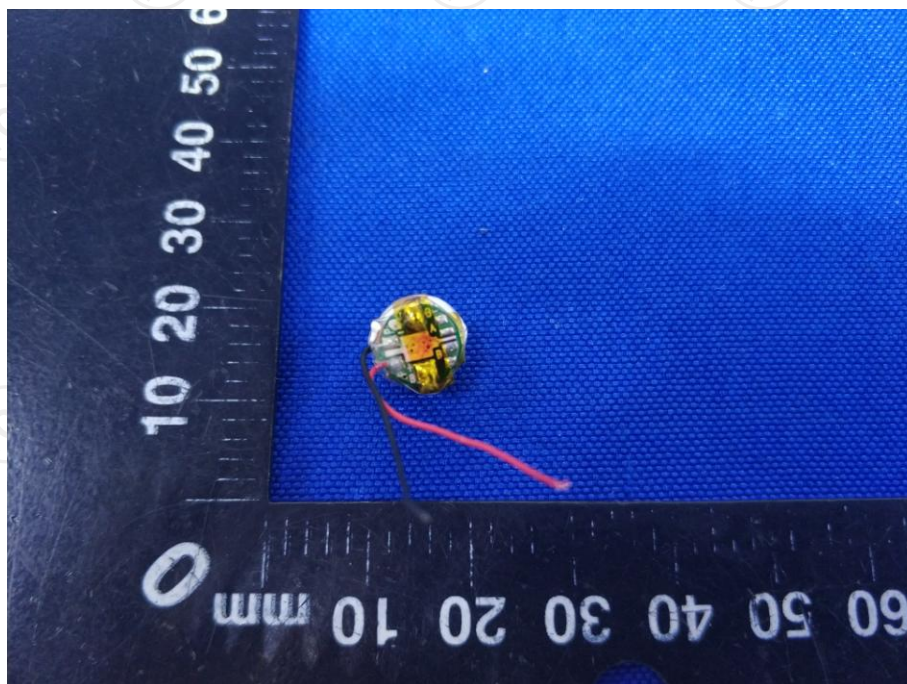
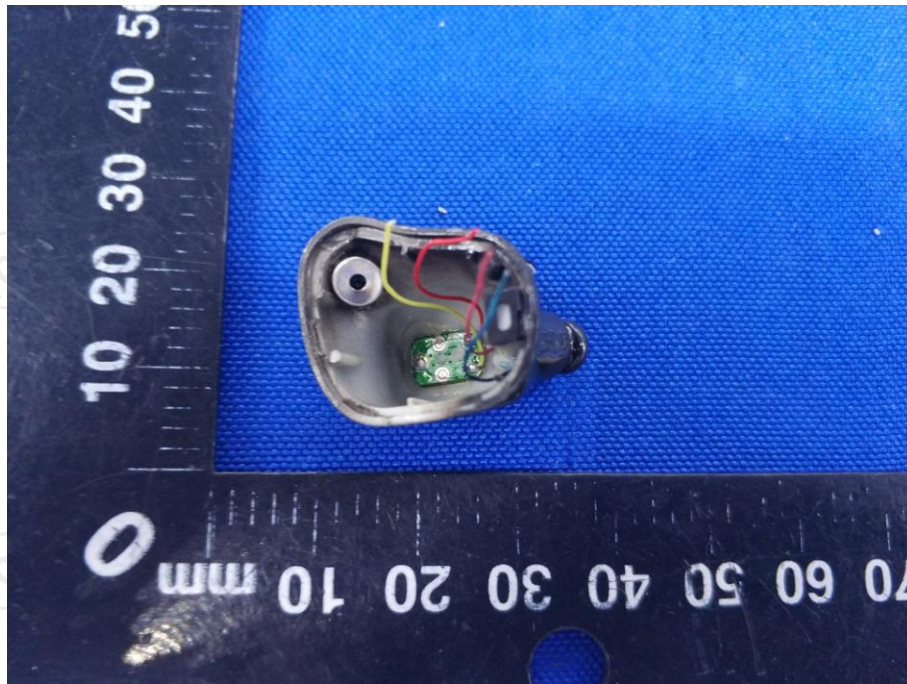


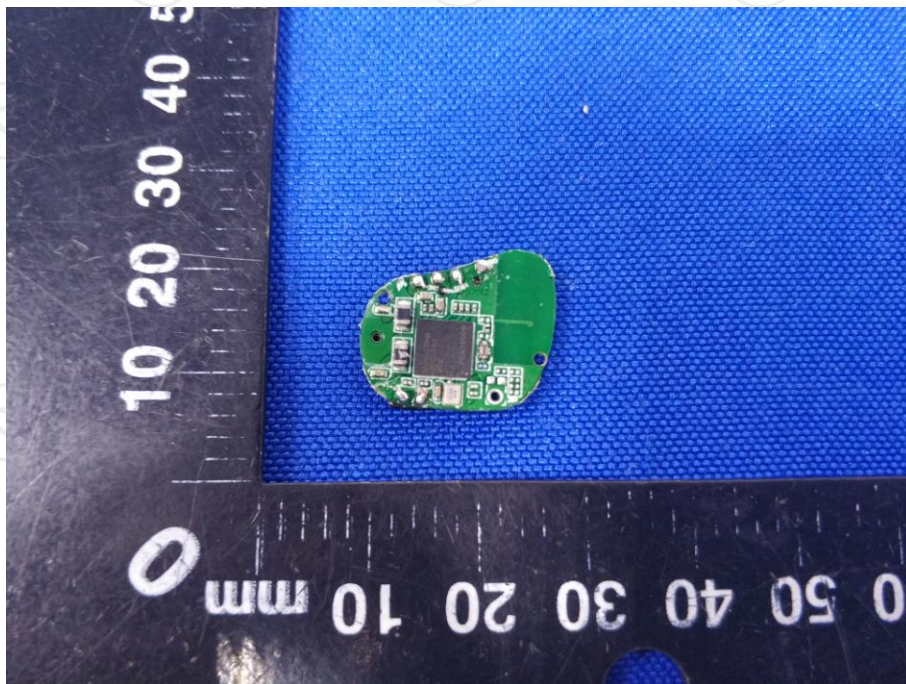
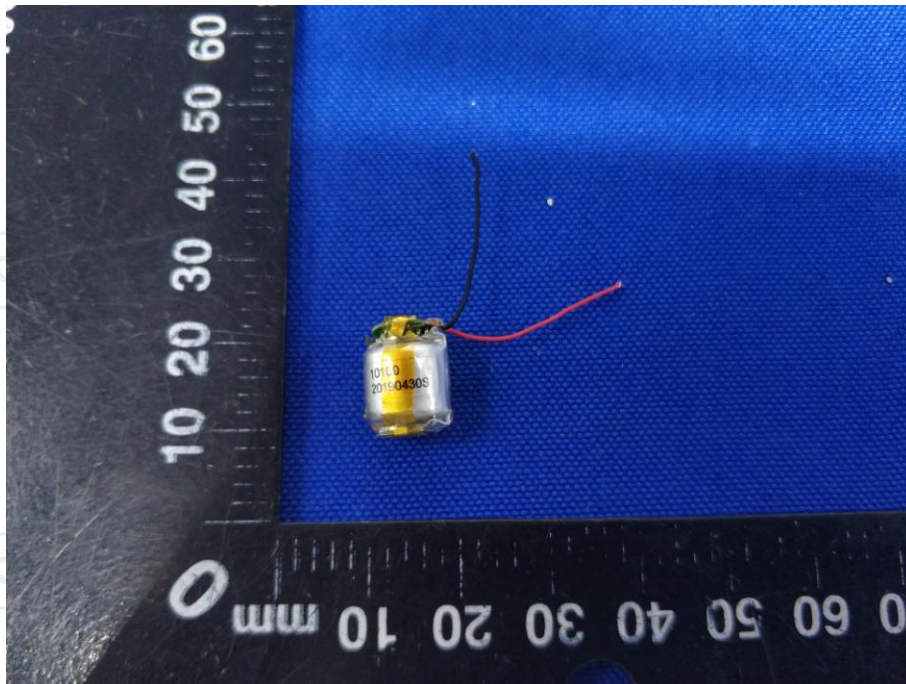


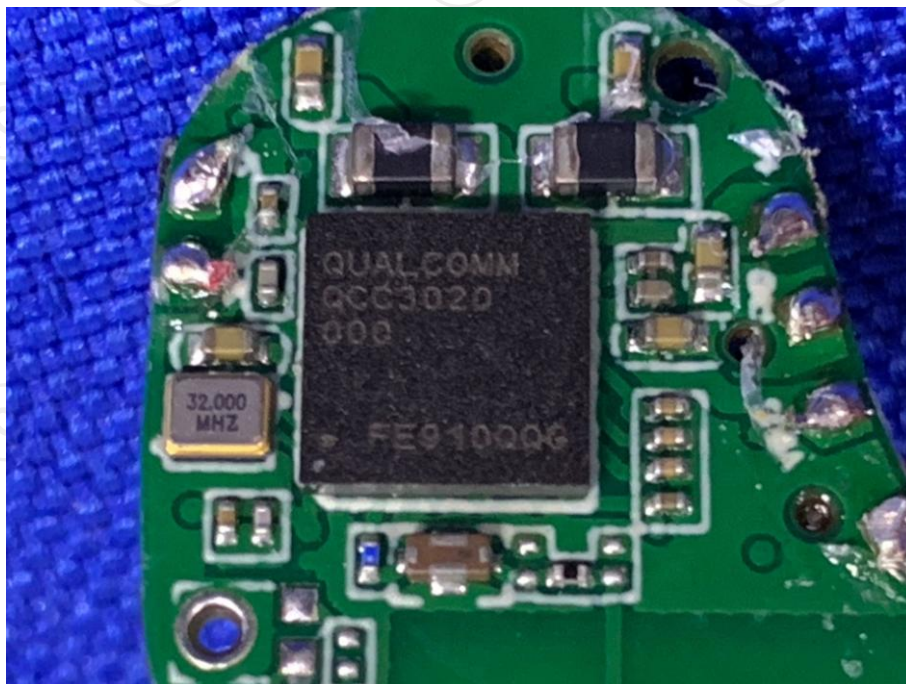
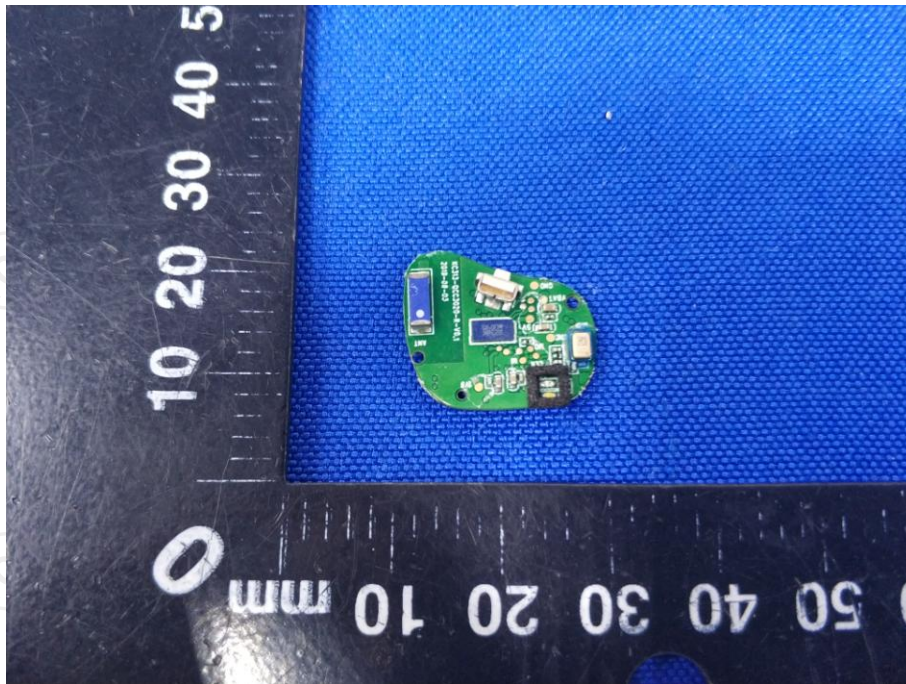












*******END OF REPORT*******