

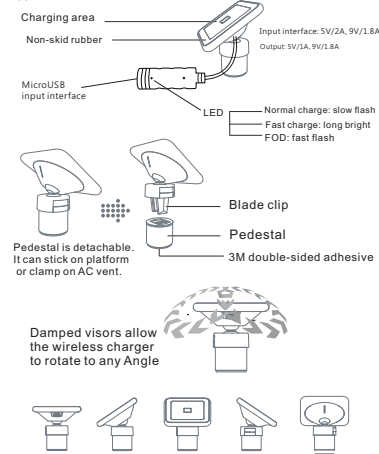
FCC Statement
 Changes or modifications not expressly approved by the party responsible for compliance could void the user's authority to operate the equipment.

This equipment has been tested and found to comply with the limits for a Class B digital device, pursuant to Part 15 of the FCC Rules. These limits are designed to provide reasonable protection against harmful interference in a residential installation. This equipment generates uses and can radiate radio frequency energy and, if not installed and used in accordance with the instructions, may cause harmful interference to radio communications. However, there is no guarantee that interference will not occur in a particular installation. If this equipment does cause harmful interference to radio or television reception, which can be determined by turning the equipment off and on, the user is encouraged to try to correct the interference by one or more of the following measures:
 -- Reorient or relocate the receiving antenna.
 -- Increase the separation between the equipment and receiver.
 -- Connect the equipment into an outlet on a circuit different from that to which the receiver is connected.
 -- Consult the dealer or an experienced radio/TV technician for help

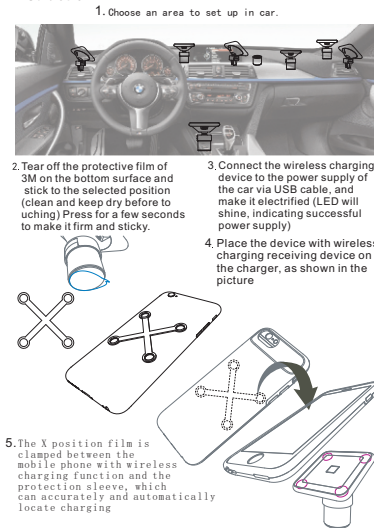
Introduction

This product is a smart wireless charger with simple and decent design, which is compatible with smart phone or device for Qi standard. It also can support fast charging of iPhone or Samsung. It is convenient and fast. You can enjoy a free charging experience

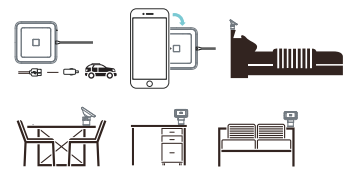
Appearance and Overview



Instruction:



Different application



Parts List

- Wireless charger x1
- USB cable x1
- X mark locating card x1
- Manual x1



Attention:

- For charging efficiency, the thickness of phone's case is suggested less than 2mm, and over 6mm may lead to slow charging or failure of charging
- Do not use metal case.
- Please keep the environment temperature in 0-45°C
- The fast charge mode requires QC 2.0 adapter.
- When the product is used in the car, the phone's safety protection mechanism may be activated due to the sun exposure at high temperature, so the phone cannot be charged immediately. After the temperature is lowered in the car room, the product can return to normal use
- Please keep the charger and receiver away from water and other liquid.
- If cleaning the charger, please make sure the power is disconnected.