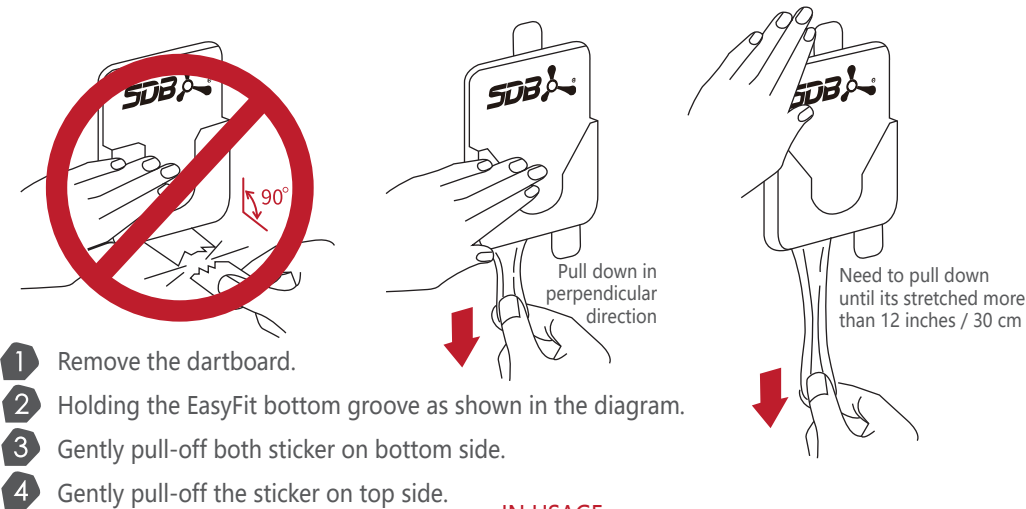




### REMOVING THE DARTBOARD AND BRACKET FROM THE WALL



### NOTE!

#### TRANSPORTATION

- Do not place any objects on the surface of the dartboard or prevent dartboard sensor from not-registered issue.

#### INSTALLATION

- Always make sure the walls are clean before assembling the EasyFit hanger bracket to ensure it will stick well.

#### IN USAGE

- Turn on the dartboard FIRST and then open the SDB APP on your mobile device. The APP will then find and connect to the dartboard automatically.
- If connection fails, please turn-off and restart both dartboard and mobile device, then follow again step 1. If still connection fails, please use the customer feedback service which integrated on apps to send customer feedback. Check your mobile device to make sure Bluetooth is enabled and ON.
- Please use soft-tip darts and never use steel-tip darts or it may damage your dartboard.
- Please note weak batteries can cause scores not to register. Replace old batteries with fresh batteries.
- If a dart tip breaks and gets stuck in the dartboard, carefully use pliers to remove the broken tip from the dartboard. Never push the tip fragment into the dartboard.

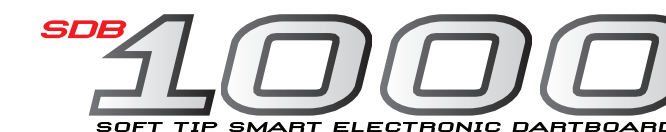
### FCC Statement:

This device complies with part 15 of the FCC Rules. Operation is subject to the following two conditions:  
 (1) This device may not cause harmful interference, and  
 (2) this device must accept any interference received, including interference that may cause undesired operation.  
 NOTE: This equipment has been tested and found to comply with the limits for a Class B digital device, pursuant to part 15 of the FCC Rules. These limits are designed to provide reasonable protection against harmful interference in a residential installation.  
 This equipment generates, uses and can radiate radio frequency energy and, if not installed and used in accordance with the instructions, may cause harmful interference to radio communications. However, there is no guarantee that interference will not occur in a particular installation.  
 If this equipment does cause harmful interference to radio or television reception, which can be determined by turning the equipment off and on, the user is encouraged to try to correct the interference by one or more of the following measures:  
 —Reorient or relocate the receiving antenna.  
 —Increase the separation between the equipment and receiver.  
 —Connect the equipment into an outlet on a circuit different from that to which the receiver is connected.  
 —Consult the dealer or an experienced radio/TV technician for help.  
 Changes or modifications not expressly approved by the party responsible for compliance could void the user's authority to operate the equipment.

#### IC statement:

This device contains licence-exempt transmitter(s) that comply with Innovation, Science and Economic Development Canada's licence-exempt RSS(s). Operation is subject to the following two conditions:  
 (1) this device may not cause interference,  
 (2) this device must accept any interference, including interference that may cause undesired operation of the device.

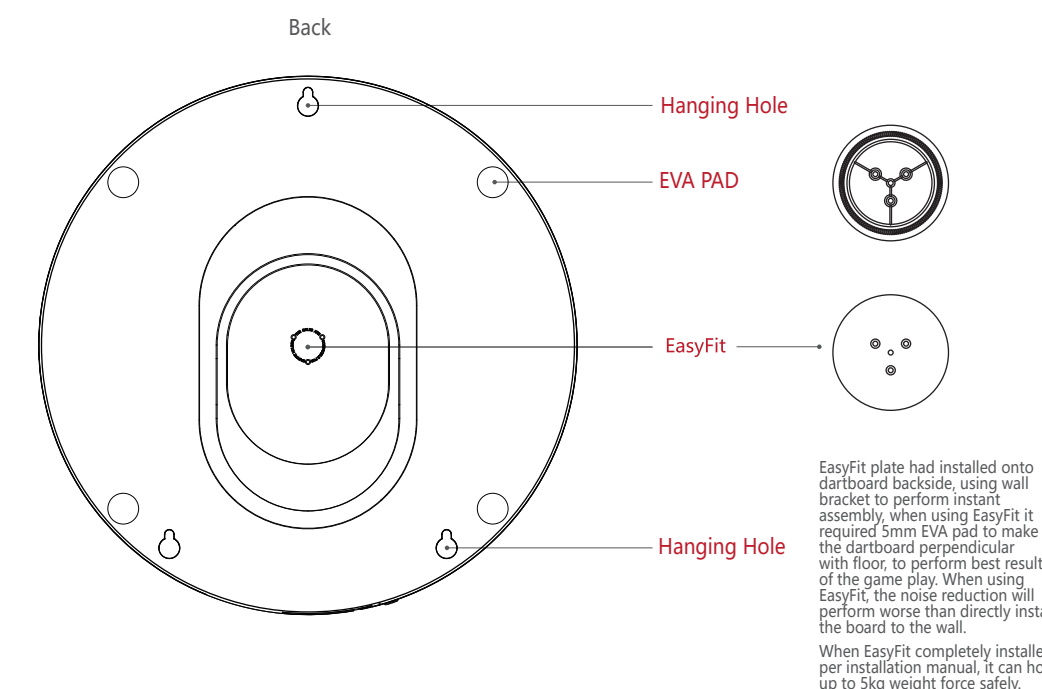
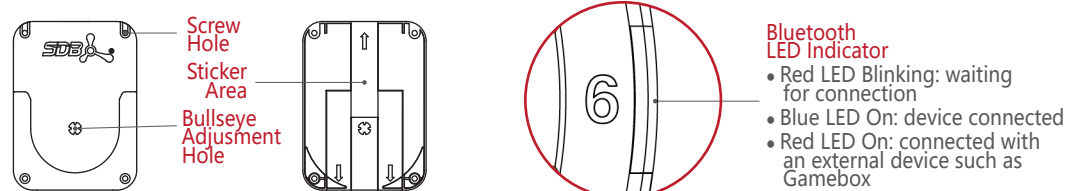
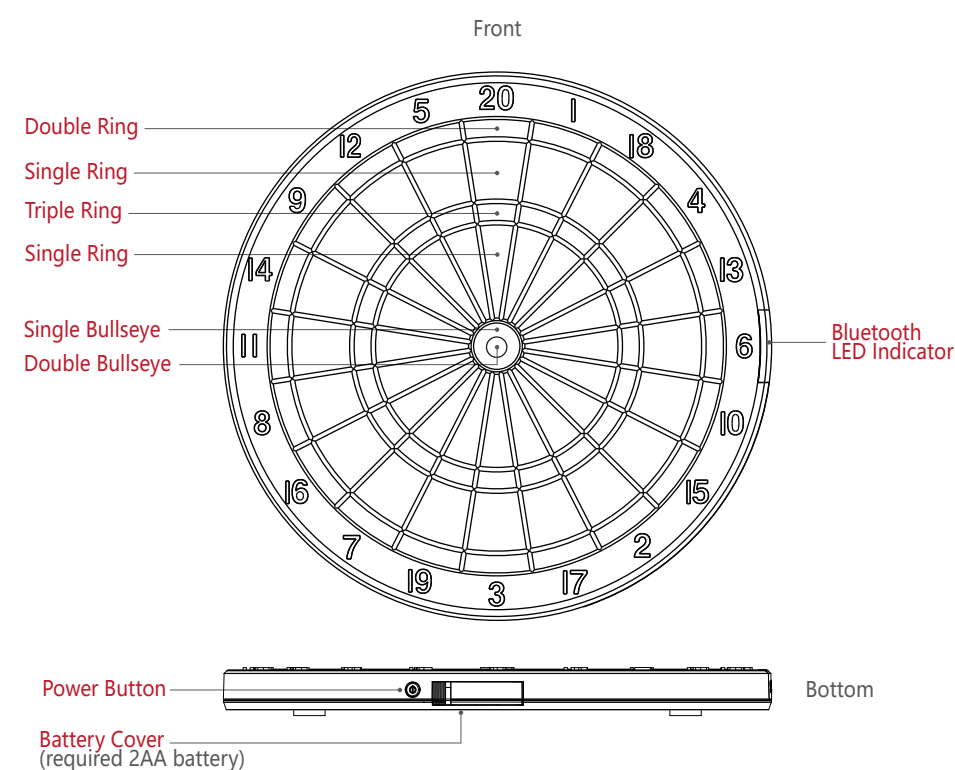
L' émetteur exempt de licence contenu dans le présent appareil est conforme aux CNR d' Innovation, Sciences et Développement économique Canada applicables aux appareils radio exempts de licence. L' exploitation est autorisée aux deux conditions suivantes :  
 1) L' appareil ne doit pas produire de brouillage;  
 2) L' appareil doit accepter tout brouillage radioélectrique subi, même si le brouillage est susceptible d' en compromettre le fonctionnement.



### BLUETOOTH DARTBOARD INSTALLATION MANUAL & USER GUIDE



### DESCRIPTIONS

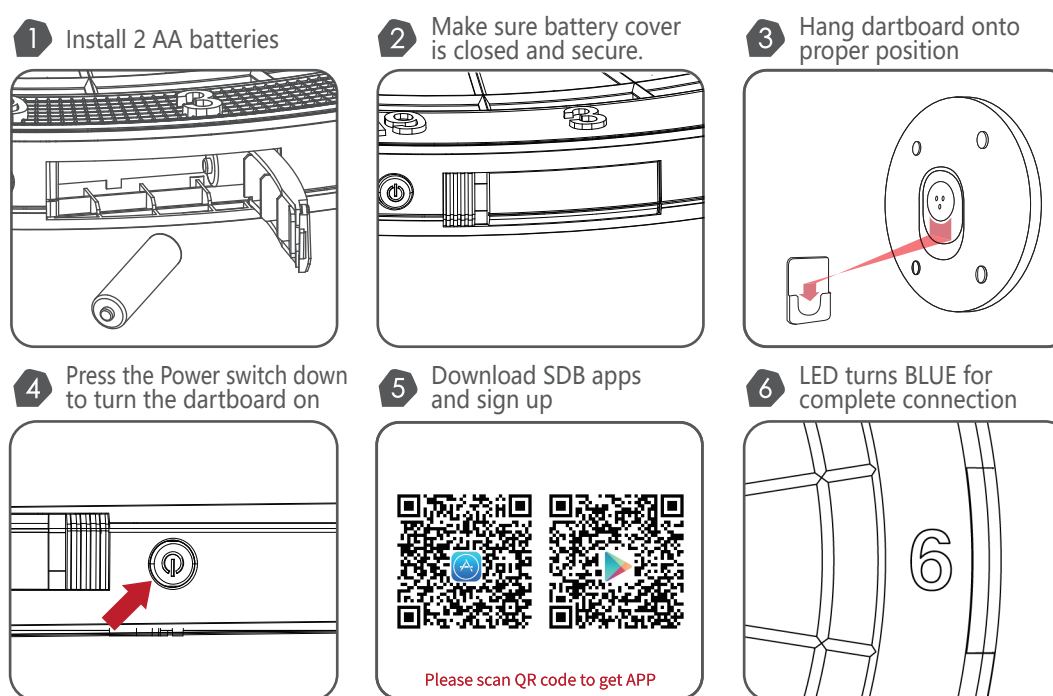


EasyFit plate had installed onto dartboard backside, using wall bracket to perform instant assembly, when using EasyFit it required 5mm EVA pad to make the dartboard perpendicular with floor, to perform best result of the game play. When using EasyFit, the noise reduction will perform worse than directly install the board to the wall.  
 When EasyFit completely installed per installation manual, it can hold up to 5kg weight force safely.

### ACCESSORIES

Soft Tip x 30	Barrel x 6	Shaft x 6	Flight x 6	Wall Plug Fisher x 4	Screw x 4

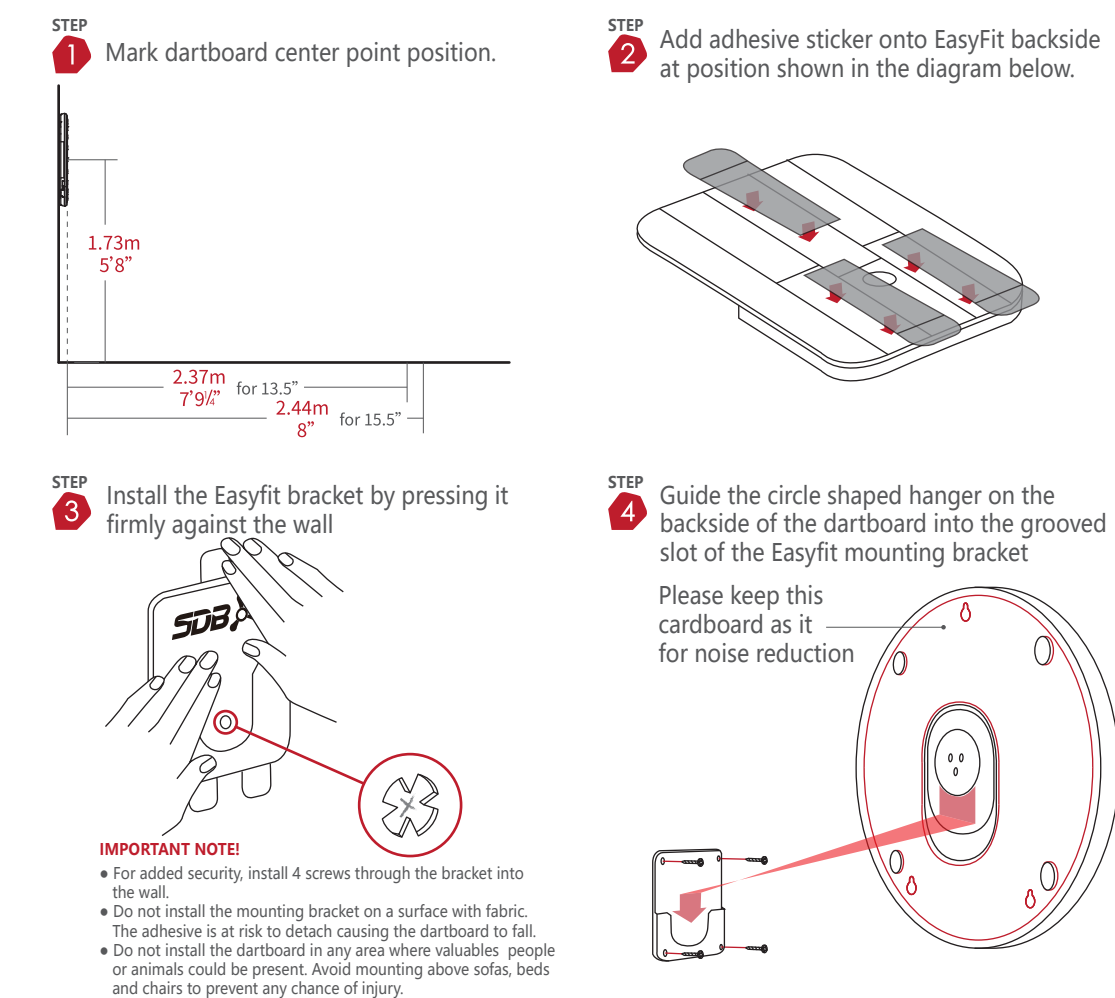
### USER GUIDE



### PRODUCT SPECIFICATION

Item No.	SDBA1000ARA	Dimension	472 x 472 x 36.5mm	Power Input	2 AA Batteries
Bluetooth ver.	Bluetooth 4.0	Weight	±1.8kgs	Power	100mW

### INSTALLATION



**IMPORTANT NOTE!**  
 • For added security, install 4 screws through the bracket into the wall.  
 • Do not install the mounting bracket on a surface with fabric. The adhesive is at risk to detach causing the dartboard to fall.  
 • Do not install the dartboard in any area where valuables, people or animals could be present. Avoid mounting above sofas, beds and chairs to prevent any chance of injury.