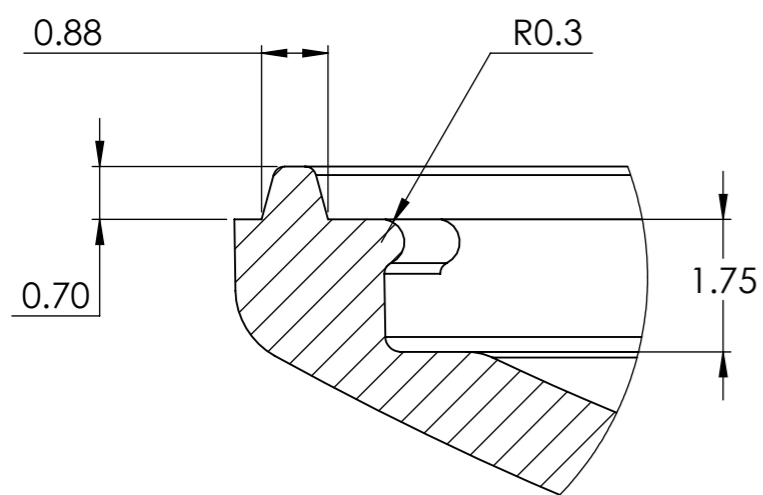


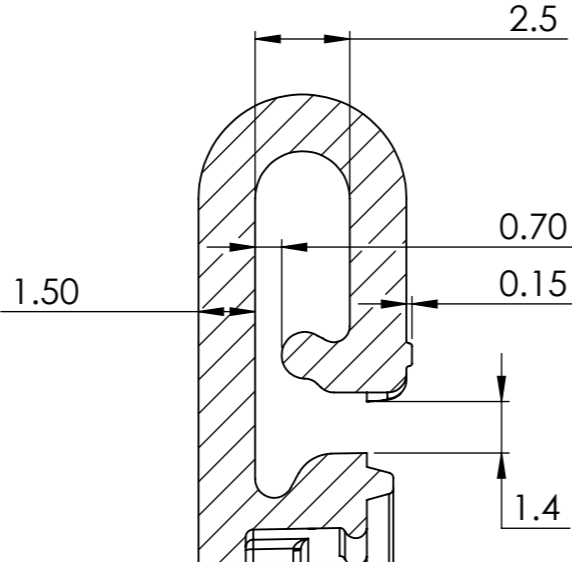
NOTES:

1. Δ INDICATES CHANGES IN THIS REVISION.
2. \circ INDICATES CRITICAL SPECS/DIMS TO BE INSPECTED IN EACH LOT.
3. REFER TO 3D CAD DATA FILE FOR FULL DEFINITION OF THIS PART.
4. MATERIAL: SEE TABLE.
5. COLOR: SEE TABLE.
6. TEXTURES: SEE TABLE.
7. MOLD-IN THE DATA CODE, MATERIAL SYMBOL & RECYCLE ICON, MATERIAL SUPPLIER CODE, P/N, CURRENT REVISION AND MANUFACTURER CODE AS INDICATED. HEIGHT TO BE FLUSH/SUB-FLUSH FROM SURFACE. SEE DETAIL VIEW FOR EXACT LOCATION.
8. NO REGRIND MATERIAL ALLOWED.
9. MFI VALUE OF MOLDED PART SHOULD BE WITHIN MAX. DEVIATION OF 30% OF THE RESIN MFI VALUE.
10. PRINTING AND ARTWORK ACCORDING TO GRAPHICS DEFINITION FILES.
11. THIS PART MUST COMPLY WITH RoHS STANDARDS.
12. NO CHANGES ALLOWED FOR PRODUCTION MATERIAL, PROCESS OR MANUFACTURING LOCATION UNLESS RECEIVED A WRITTEN APPROVAL FROM ESI.

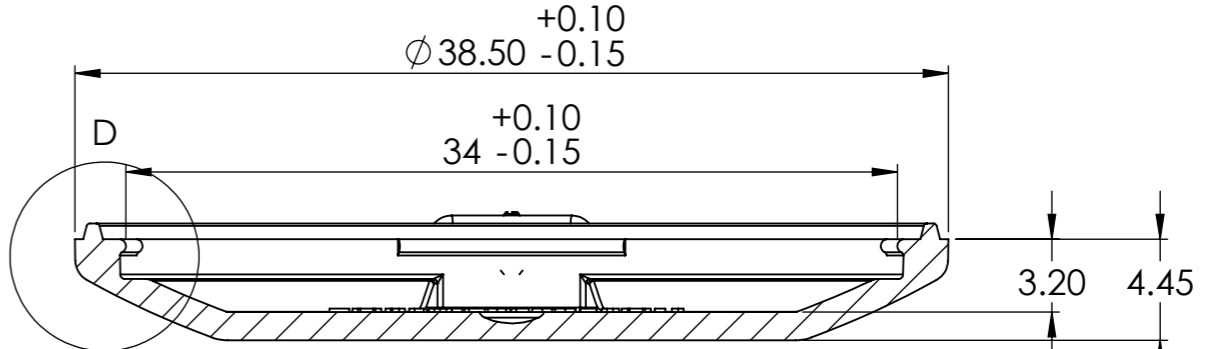
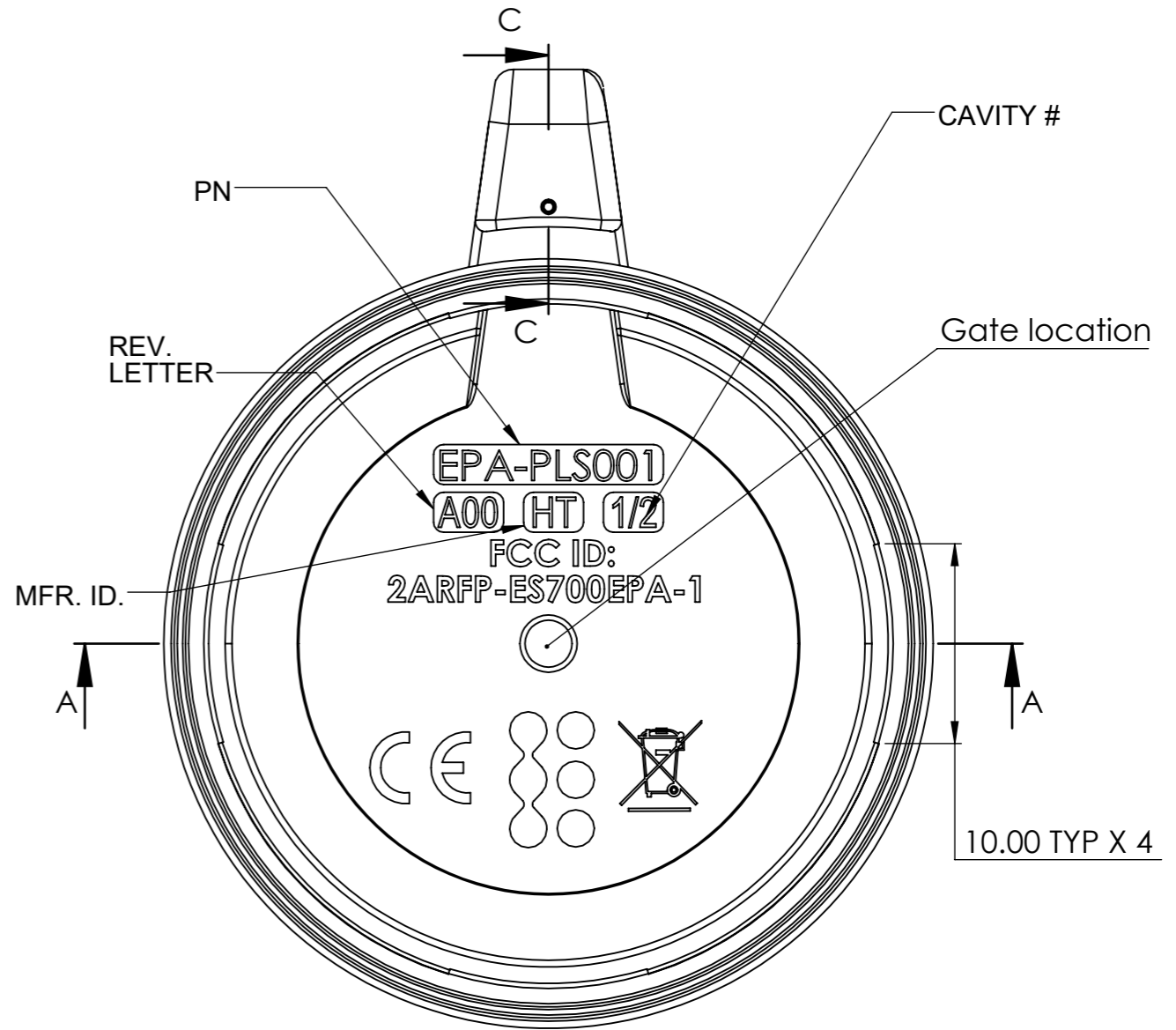
5	4	3	2	1
ECN No.	REV	DESCRIPTION	ISSUE DATE	ISSUED BY
NA	A00	Release for tooling	12/12/2018	SHARON B.



DETAIL D
SCALE 10 : 1



SECTION C-C
SCALE 5 : 1



SECTION A-A
SCALE 3 : 1



MATERIAL	COLOR	SURFACES DEFINITIONS
1-ST SOURCE:	BASE RESIN:	EXTERNAL SURFACES:
BAYER Covestro Makrolon 8315 Polycarbonate, 10% Glass Filled	WHITE RAL 9003	HIGH POLISH
2-ND SOURCE:	PLATING / PAINT	INTERNAL SURFACES:
N/A	N/A	TECHNICAL POLISH

ANSI-METRIC THIRD ANGLE PROJECTION	NAME	SIGN.	DATE	
INTERPRET DRAWING IN ACCORDANCE WITH ISO STANDARDS	DESIGNED	SHARON B.	25/11/2018	
UNLESS OTHERWISE SPECIFIED DIMENSION ARE IN MILLIMETERS GENERAL TOLERANCES: .X = ± 0.3 .XX = ± 0.10 ANGLES = ± 0.5°	DRAWN	SHARON B.	25/11/2018	PROJECT: CAR-EPA
	CHECKED	SERGEY M.	25/11/2018	DESCRIPTION: BATTERY COVER
	APPROVED			SIZE: A3 P/N: EPA-PLS001 REV. A00
MATERIAL: Material <not specified> WEIGHT: 1.92g	DO NOT SCALE THIS DRAWING			SCALE: 2:1 MODEL FILE NAME: EPA-PLS001 SHEET 1 OF 1

8 7 6 5 4 3 2 1

F

E

D

C

B

A