

FCC STATEMENT :

This device complies with Part 15 of the FCC Rules. Operation is subject to the following two conditions:

This device may not cause harmful interference, and

This device must accept any interference received, including interference that may cause undesired operation.

Warning: Changes or modifications not expressly approved by the party responsible for compliance could void the user's authority to operate the equipment.

NOTE: This equipment has been tested and found to comply with the limits for a Class B digital device, pursuant to Part 15 of the FCC Rules. These limits are designed to provide reasonable protection against harmful interference in a residential installation. This equipment generates uses and can radiate radio frequency energy and, if not installed and used in accordance with the instructions, may cause harmful interference to radio communications. However, there is no guarantee that interference will not occur in a particular installation. If this equipment does cause harmful interference to radio or television reception, which can be determined by turning the equipment off and on, the user is encouraged to try to correct the interference by one or more of the following measures:

Reorient or relocate the receiving antenna.

Increase the separation between the equipment and receiver.

Connect the equipment into an outlet on a circuit different from that to which the receiver is connected.

Consult the dealer or an experienced radio/TV technician for help.

RF warning statement:

The device has been evaluated to meet general RF exposure requirement. The device can be used in portable exposure condition without restriction.

Cub

FR

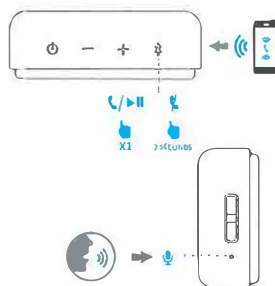
STATUT	COULEUR	LED INDICATION
✱ Pas connecté	Bleu	Clignotant
✱ Mode d'appariement / Appel entrant	Bleu	Clignotant
✱ Connecté	Bleu	Allumé
🔋 Batterie faible	Rouge	Clignotant
🔋 Mise en charge	Rouge	Allumé

DE

STATUT	FARBE	LED-ANZEIGE
✱ Nicht verbunden	Blau	Blinkt
✱ Verbindungsmodus / Eingehender Anruf	Blau	Blinkt
✱ In Verbindung gebracht	Blau	Eingeschaltet
🔋 Geringer Strom	Rot	Blinkt
🔋 Aufladen	Rot	Eingeschaltet

Cub

- ⑥ **FR** Speakerphone
IT Vivavoce
ES Altavoz
FR Haut-parleur
DE Freisprecheinrichtung
PT Viva voz
ZH 免提通话



Cub

PT

STATUT	COR	INDICAÇÃO DE LED
✱ Não conectado	Azul	Piscando
✱ Modo de emparelhamento / Chamada recebida	Azul	Piscando
✱ Conectado	Azul	Aceso
🔋 Baixa potência	Vermelho	Piscando
🔋 A carregar	Vermelho	Aceso

ZH

状态	颜色	LED指示
✱ 未连接	蓝色	闪烁
✱ 配对模式 / 来电	蓝色	闪烁
✱ 已连接	蓝色	常亮
🔋 电量低	红色	闪烁
🔋 充电	红色	常亮

Cub

- ⑦ **EN** LED Indication
IT LED Indicazione
ES LED Indicación
FR LED Indication
DE LED-Anzeige
PT LED Indicação
ZH LED 指示

EN

STATUS	COLOR	LED INDICATION
✱ Not connected	Blue	Blinking
✱ Pairing mode / Incoming call	Blue	Blinking
✱ Connected	Blue	On
🔋 Low Power	Red	Blinking
🔋 Charging	Red	On

Cub

- ⑧ **FR** Warning
IT Avvertimento
ES Advertencia
FR Avertissement
DE Warnung
PT Atenção
ZH 警告



Cub

IT

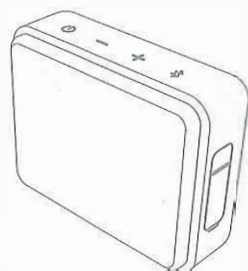
STATO	COLORE	LED INDICAZIONE
✱ Non connesso	Blu	Lamppeggio interm.
✱ Modalità di associazione / Chiamata in arrivo	Blu	Lamppeggio interm.
✱ Collegato	Blu	Accesso
🔋 Bassa potenza	Rosso	Lamppeggio interm.
🔋 Ricarica	Rosso	Accesso

ES

ESTADO	COLOR	LED INDICACIÓN
✱ No conectado	Azul	Parpadeo
✱ Modo de emparejamiento / Llamada entrante	Azul	Parpadeo
✱ Conectado	Azul	Encendido
🔋 Baja Potencia	Rojo	Parpadeo
🔋 Carga	Rojo	Encendido

Cub

QUICK START GUIDE
GUIDA RAPIDA
GUÍA DE INICIO RÁPIDO
GUIDE DE DÉMARRAGE RAPIDE
SCHNELLSTARTANLEITUNG
GUIA RÁPIDO
快速入门指南



Jamo

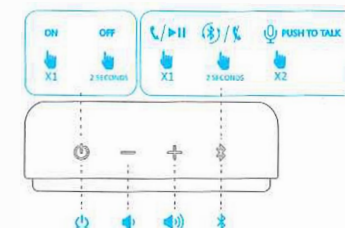
Cub

- ①
- EN Inside the box
 - IT Nella scatola
 - ES En la caja
 - FR Dans la boîte
 - DE In der Box
 - PT Na caixa
 - ZH 包装盒内



Cub

- ②
- EN Buttons
 - IT Pulsanti
 - ES Botones
 - FR Boutons
 - DE Tasten
 - PT Botões
 - ZH 按钮



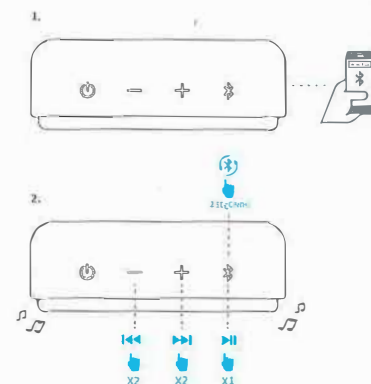
Cub

- ③
- EN Connections
 - IT Connessioni
 - ES Conexiones
 - FR Connexions
 - DE Verbindungen
 - PT Conexões
 - ZH 连接



Cub

- ④ BLUETOOTH



Cub

- ⑤ TWS

