

Federal Communications Commission
Authorization and Evaluation Division
7435 Oakland Mills Rd.
Columbia, MD 21046

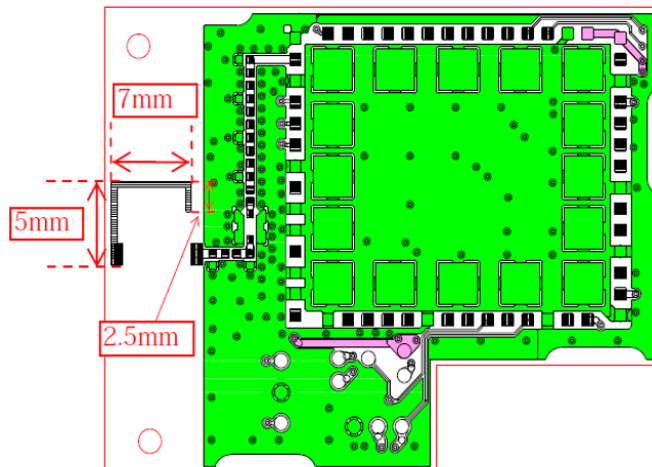
Reference FCC ID: 2ARF2ML-310**Regarding: Application for a Class II Permissive Change/Reassessment**

Organization: New Cosmos Electric Co., Ltd.

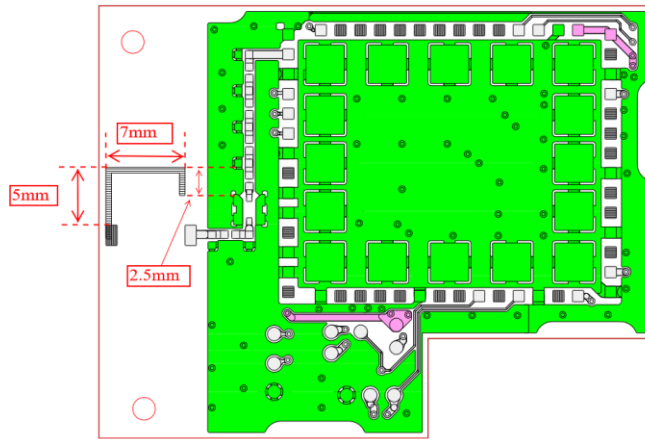
This Methane Gas Detector, Model ML-310CE, has been previously certified under the ID numbers listed above. We would like the modified product to be certified under the same ID numbers.

Following is a description of the change that was made to the ML-310CE daughter board.

1. The ground plane was improved by minimizing vias. (See PCB layout below)
2. The antenna impedance matching circuit was optimized for new layout.

Before

After



The PCB was not changed. The Antenna, RF power and modulation have not changed.

All other design elements of the PCB remain the same as the current FCC compliant product. The antenna was not changed. The Low Pass Filter was not changed.

Authorized Signature

A handwritten signature in black ink that reads "Joseph Strzelecki".

Joseph Strzelecki
Senior EMC Engineer
Radiometrics Midwest Corporation
Authorized Agent for New Cosmos Electric Co., Ltd.