

## Wireless Connect Natural Gas Alarm Model DD624NVW

### User's Manual

Thank you for purchasing this DeNova Detect Multi-Station Natural Gas Alarm. Please thoroughly read and understand this User's manual content before using this Gas Alarm and retain it for future reference. When natural gas (methane) is detected, alarm warnings will be activated. The alarm consists of a flashing red LED light, sounding of a warning alarm and a recorded message. This Gas Alarm can create a Wirelessly Interconnected Gas Alarm Network by interconnecting 2 or more Gas Alarms.



### ⚠️ DANGER: ASPHYXIATION & EXPLOSION

#### NATURAL GAS LEAK ALARM INDICATES AN EMERGENCY SITUATION AND RISK OF EXPLOSION

- Leave building immediately, open doors and windows as you leave. Take others with you. If you are outside when you hear the alarm, leave the area immediately.
- Avoid creating any sparks.
- Find a phone AWAY FROM THE AREA and immediately call 911 and/or your gas utility Company.
- Do not re-enter the area until the source of the leak is found and corrected.

Follow directions from utility employees or emergency responders on site.

### ⚠️ DANGER: ELECTROCUTION

- Do not subject this Gas Alarm to water or liquid by submerging it, spraying liquid on it or otherwise.
- Do not disassemble this alarm or attempt to remove the front cover.

### ⚠️ DANGER: EXPLOSION

Do not use this Gas Alarm as a short-term testing device. Doing so may cause an explosion.

### ⚠️ DANGER: FIRE & EXPLOSION

Improper Gas Alarm disposal may result in fire or explosion.

### ⚠️ DANGER: HAZARDOUS CONDITIONS

Follow these instructions completely. Failure to do so may result in an undetected natural gas leak or other hazardous conditions that may cause serious injury or death.

### ⚠️ DANGER: HEARING DAMAGE

Do not place ear directly against or in close proximity to Gas Alarm. Audible alarms may damage hearing.

### ⚠️ WARNING

- Do not block, cover, obstruct or paint over Gas Alarm. The Gas Alarm can only detect natural gas that reaches Gas Alarm.
- This Gas Alarm will reach the end-of-service life in approximately 10 years after the installation date. Replace after end-of-service life signal is initiated.
- Test product regularly. Alarm batteries must be properly connected at all times.
- Do not modify, disassemble, submerge, strike, crush, or expose Gas Alarm to high levels of volatile organic compounds. This may cause Gas Alarm to malfunction.
- Contact DeNova Detect for replacement batteries. Commercially available batteries will not work.
- Keep out of reach of children.
- For indoor use only.

### ⚠️ NOTICE

- This Gas Alarm only detects natural gas. It does not detect carbon monoxide, fire, heat, smoke, flames, propane or any other gas.
- This Gas Alarm is not a substitute for proper installation, use, and maintenance of natural gas sources. This Gas Alarm does not prevent natural gas leaks from occurring, nor can it solve any existing natural gas problems.

## General Description & Intended Use

### ⚠️ DANGER

If you smell natural gas, evacuate the area right away, then call 911 or your gas utility company. Do not wait for alarm to sound.

### ⚠️ WARNING

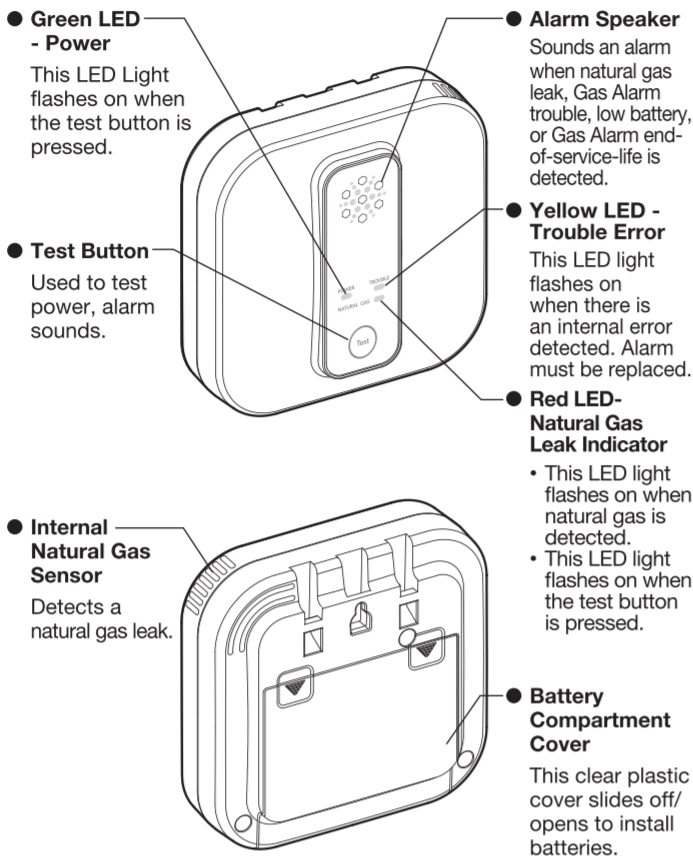
This Gas Alarm is designed to act as a continuous monitor of natural gas that reaches the sensor. This Gas Alarm should not be used as a short-term testing device to perform a one-time check for the presence of natural gas.

This Gas Alarm detects natural gas. Natural gas is a fossil fuel that is primarily made up of methane. It is commonly used for cooking, home heating and water heating. Natural gas is typically supplied through a main utility line connected to your home. It is a highly flammable chemical compound. Although it happens rarely, a natural gas leak can sometimes occur inside the home. This can be dangerous because it increases the risk of explosion and fire.

Natural gas is typically odorless and colorless, unless your gas supplier treats it with a chemical to make it smell. Individuals with diminished sense of smell may not be able to detect even treated natural gas. If you are not sure which gas your home uses, contact your utility company.

When this Gas Alarm detects natural gas at a concentration of equal to or greater than 10% LEL for methane, it is designed to provide 2 long beeps and announce "Danger – gas leak explosion risk – evacuate, then call 911" followed by 2 additional long beeps and announce "Peligro – riesgo de explosión por fuga de gas – evacuar, luego llamar al 911."

## Gas Alarm Parts



## Mounting the Gas Alarm

### Selecting the Gas Alarm Location

#### ⚠️ WARNING

- Mounting in an improper location can affect the sensitive electronic components in this Gas Alarm.
- Improper Gas Alarm location can prevent detection of natural gas.
- Improper location can prevent you from hearing the alarm. Install in a location where you can hear the alarm sound loudly from all sleeping areas.
- Place Gas Alarm out of reach of children. Under no circumstances should children be allowed to handle this Gas Alarm.

Gas Alarms should be installed in all rooms where a gas leak may occur or a gas appliance is located. Examples are a kitchen (gas leaks from gas ovens and cook tops), laundry (gas leaks from a gas clothes dryer), and furnace area (gas leaks from furnace burners or boilers). It is possible that gas leaks may migrate along pipes so consideration should be given to place Gas Alarms in multiple rooms. Consider placing a Gas Alarm in each bedroom where the occupant closes the door while sleeping.

Although it is important to install Gas Alarms in rooms where gas appliances exist, it is recommended Gas Alarms be placed at least 3 feet (0.9 meters) away and no more than 10 feet (3 meters) away. The placement recommendations are intended to keep Gas Alarms at a reasonable distance from a gas source, and thus reduce "unwanted" alarms, which can occur if a Gas Alarm is placed directly next to a gas source.

Avoid placing the Gas Alarm near a cooking appliance or cooktop hood. If you must do so, install at least 5 feet (1.5 meters) from cooking appliance or cooktop hood because cooking vapors or grease may contaminate the Gas Alarm.

#### Gas Alarm should be Mounted:

- Within 12 inches (0.3 meters) from the ceiling.
- At least 5 feet (1.5 meters) from cooking appliance or cooktop hood.
- At least 3 feet (0.9 meters) away and no more than 10 feet (3 meters) away from gas appliances.
  - Where the existing space does not allow for installation at least 3 feet (0.9 meters) from a gas appliance, the Gas Alarm may be installed less than 3 feet (0.9 meters) from the gas appliance assuming the Gas Alarm will not be affected by heat or exhaust gas.

#### Gas Alarm should NOT be Mounted:

- In the peak of a cathedral ceiling.
- In an area where it will be impeded by items hanging from or near the ceiling such as curtains, drapes, ceiling fans.
- Directly above or near sources of water or humidity such as a sink, cooktop, dishwasher or shower.
- Next to a door or window.
- Next to a ventilation fan.
- Near a room return or HVAC duct.
- In an area where the temperature will drop below 32°F (0°C) or exceed 122°F (50°C).
- In an area that is dusty or dirty.
- In an area where organic solvents exist or silicone vapors exist.
- In a damp or very humid location, such as a bathroom.
- Outside.
- Near large metals surfaces or bundles of wire.
- Near fluorescent lights, amateur radios, electrical equipment, or other devices that may transmit an RF signal, as electronic noise may cause nuisance alarms.

## Battery Installation

### ⚠️ DANGER : SHOCK HAZARD

Do NOT remove the plastic wrap surrounding the battery pack. Doing so may cause an electrical short or shock.

### ⚠️ WARNING

After installing or replacing batteries, always test the Gas Alarm to ensure it is operational.

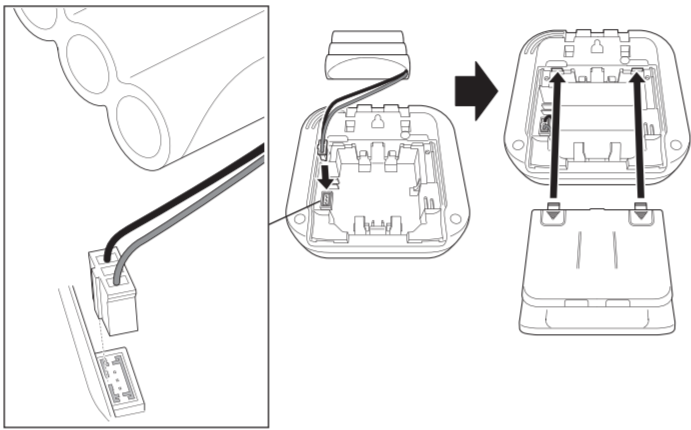
### ⚠️ NOTICE

This Gas Alarm uses a type of battery that is not available in retail stores. Contact DeNova Detect for replacement batteries.

To install the included batteries, or replace with manufacturer-supplied replacement batteries:

- Open the clear battery compartment cover on the back of the Gas Alarm. This cover slides out of place. To open, place both thumbs on the grooved arrows on the back of the battery cover where the battery cover hooks snap into place.
- Push down on the grooved arrows with your thumbs and slide the cover out. Some force is required.

- Connect the batteries by inserting the battery harness plug into the Gas Alarm receptacle as shown in the diagram below. Do NOT remove the plastic wrap surrounding the batteries.



- The battery harness plug has a large notch on it that faces to the left away from the Gas Alarm when installed correctly. There is only one way in which the plug can be installed. A small portion of the plug will be exposed when connected properly. Close the clear battery compartment cover on the back of the Gas Alarm.

If replacing the batteries, refer to "Gas Alarm Disposal" section for instructions on disposing of the old batteries.

## Interconnecting the Gas Alarms

### ⚠️ NOTICE

After interconnecting the Gas Alarms, test them following the instructions in the "Testing the Gas Alarm Functions" section of this User's Manual.

No more than 5 units can be interconnected. Interconnecting is available only for 30 minutes after installing the included batteries. The interconnection sequence should be performed one unit at a time.

- (1) Please make sure that the green LED has stopped blinking after the initialization period is complete before starting the interconnection sequence.
- (2) Press and hold the test button on one of the Gas Alarms for 10 seconds, and the audible "beep beep beep" alarm notification will begin automatically. If the Gas Alarm is operating properly, the green LED will flash slowly once every two seconds until the interconnection sequence is complete.
- (3) Press and hold the test button on the Gas Alarm you wish to interconnect for 10 seconds, and the audible "beep beep beep" alarm notification will begin automatically. If the Gas Alarm is operating properly, the green LED will flash slowly once every two seconds until the interconnection sequence is complete. However, the green LED may turn on by the immediate completion of the interconnection (refer to step 4).
- (4) After the interconnection sequence is successful, the green LED on either interconnected Gas Alarm will turn on for 5 seconds and then turn off.
- (5) If you want to interconnect more Gas Alarms, simply repeat steps 3 and 4.
- (6) After the 5 Gas Alarms are interconnected, the green LED will turn off, and the interconnection sequence is complete. If you interconnect less than 5 Gas Alarms, wait for 120 seconds after the last operation or press the test button on the Gas Alarm with the green LED flashing for 3 seconds.
- (7) Test the Gas Alarms by referring to the "Testing the Gas Alarm Functions" section of this User's Manual.

## Mounting the Gas Alarm

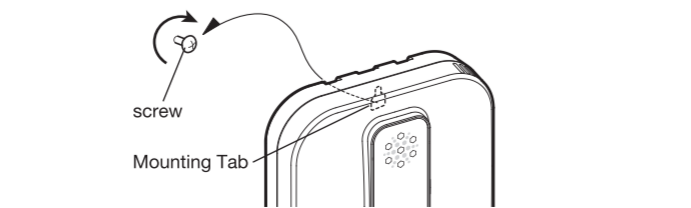
### ⚠️ NOTICE

After mounting the Gas Alarm, test it following instructions in this User's Manual.

The Gas Alarm may be mounted to the wall or a pipe in a location meeting the criteria discussed in the "Selecting Gas Alarm Location" section.

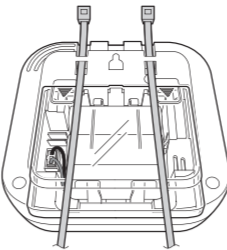
#### To Mount the Gas Alarm to a Wall:

- (1) Tools you will need: Drill with 3/16" or 5 mm drill bit, Phillips head screwdriver.
- (2) Tools supplied: A plastic screw anchor and screw have been provided in the box.
- (3) Choose a location on the wall within 12 inches (0.3 meters) from the ceiling. Make a mark on the wall where you will drill the mounting hole.
- (4) Use a 3/16" (5 mm) drill bit to drill the mounting hole and insert included plastic screw anchor into the hole.
- (5) Tighten the screw into the anchor until the screwhead is about 3/16" (5 mm) away from the wall, leaving enough space for the screw to insert into the keyhole slot on the back of the Gas Alarm as shown below.
- (6) Hang the Gas Alarm on the screw.
- (7) Test the Gas Alarm by pressing the test button. Refer to "Testing the Gas Alarm Functions" section of this manual for additional information.



#### To Mount the Gas Alarm to a Pipe:

- (1) Pass cable ties through the holes at the top of the Gas Alarm. Cable ties are not included with this Gas Alarm.



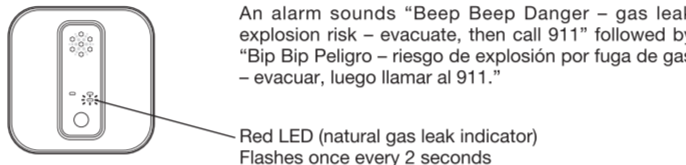
## Gas Alarm Functions

This Gas Alarm is designed to activate an alarm in the event of a natural gas leak, Gas Alarm trouble, low battery, or Gas Alarm end-of-service-life for the Gas Alarm.

Additionally, this Gas Alarm is designed to wirelessly connect 2 or more Gas Alarms and create a Wirelessly Interconnected Gas Alarm Network. In this Network, the Gas Alarm that detects natural gas is referred to as the "Initiating Alarm". The Gas Alarm that receives the wireless signal from the Initiating Alarm that there is an active natural gas leak alarm is referred to as the "Remote Alarm".

### Natural Gas Leak Alarm Activation

A natural gas leak alarm activates when the concentration of natural gas in the area of the Gas Alarm reaches or exceeds 10%LEL for methane. When activated, the Gas Alarm is designed to:



Provide 2 long beeps and announce "Danger – gas leak explosion risk – evacuate, then call 911" followed by 2 additional long beeps and announce "Peligro – riesgo de explosión por fuga de gas – evacuar, luego llamar al 911." Notification will repeat continuously for 4 minutes, then every 1 minute after.

Red LED flashes once every 2 seconds. In the event the natural gas leak dissipates to a concentration below the Gas Alarm's alarm threshold, the gas alarm notification will automatically reset. The red LED will stop blinking, and the audible tone will stop.

## Responding to Natural Gas Leak Alarm Activation

### ⚠️ DANGER : ASPHYXIATION & EXPLOSION

Follow these instructions carefully in the event the natural gas leak alarm activates. Never ignore natural gas leak alarm. When this Gas Alarm detects natural gas at a concentration of greater than or equal to 10% LEL for methane, it is designed to Provide 2 long beeps and announce, "Danger – gas leak explosion risk – evacuate, then call 911" followed by 2 additional long beeps and announce "Peligro – riesgo de explosión por fuga de gas – evacuar, luego llamar al 911." A red LED light will also flash on the Gas Alarm.

Leave the building immediately, opening doors and windows as you leave. Take others with you. If you are outside when you hear the alarm, leave the area immediately.

Any spark might cause natural gas to explode. Take all appropriate steps to avoid causing a spark near the affected property, including the following:

- Do not unplug the lithium batteries.
  - Do not light a match or smoke.
  - Do not turn appliances or lights on or off.
  - Do not use a flashlight or phone.
  - Do not start a car.
- Find a phone away from the area and immediately call 911 and/or your natural gas utility company. You can report leaks anonymously. Do not re-enter the area until the source of the leak is found and corrected. Follow directions from utility employees or emergency responders who are on site.

### ⚠️ DANGER: EXPLOSION RISK

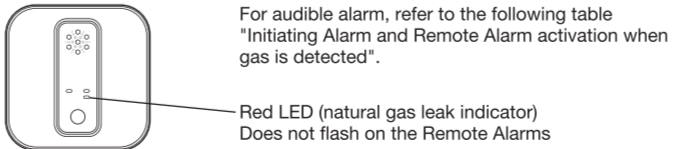
Do not reset Gas Alarm after natural gas leak alarm goes off, unless instructed to do so by emergency personnel. The resetting process can cause an explosion if conducted in an area with high concentrations of natural gas.

Emergency responders or trained personnel may reset or instruct you to reset the Gas Alarm after the leak has been corrected by removing and reinstalling the batteries. This will turn off audible and visual notifications. After removing the batteries, press and hold the test button for at least 10 seconds and leave the batteries unplugged for at least 2 minutes. This will reset the Gas Alarm by turning off audible and visual notifications.

In the event the natural gas leak dissipates to a concentration below the Gas Alarm's alarm threshold, the gas alarm notification will automatically reset. The red LED will stop blinking, and the audible tone will stop.

## Wireless Interconnected Alarm Activation

All wirelessly interconnected Gas Alarms sound the same audible alert when the Initiating Alarm detects gas.



## Initiating Alarm and Remote Alarm activation when gas is detected

	Initiating Alarm		Remote Alarm	
	Red LED	Audible Alert	Red LED	Audible Alert
Natural gas	Red natural gas LED flashes once every 2 seconds.	"Beep Beep Danger – gas leak explosion risk – evacuate, then call 911" followed by Spanish Audio.	No LEDs on	"Beep Beep Danger – gas leak explosion risk – evacuate, then call 911" followed by Spanish Audio.
Gas detected	DD624NVW does not function as the Initiating Alarm.		No LEDs on	"Beep Beep Danger – carbon monoxide detected – evacuate now," followed by Spanish Audio.
	DD624NVW does not function as the Initiating Alarm.		No LEDs on	"Beep Beep Danger – gas leak explosion risk – evacuate, then call 911" followed by Spanish Audio.

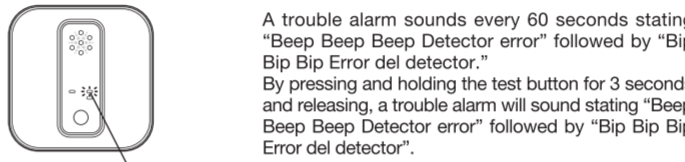
\*: Activation when DD626NCVW detects gas.

Red LED does not flash on the Remote Alarms. Red LED flashes once every 2 seconds on the Initiating Alarm. Refer to the table "Initiating Alarm and Remote Alarm activation when gas is detected" above for more information.

You cannot silence a natural gas leak Initiating Alarm and Remote Alarm. If a Remote Alarm detects natural gas at or above the alarm threshold, it will activate its audible natural gas leak alarm and all wireless interconnected Gas Alarms in the network will activate as Remote Alarms.

## Gas Alarm Trouble Error Activation

A trouble alarm sounds every 60 seconds when an alarm error occurs, alternating between the following messages each minute: "Beep Beep Beep Detector error" and "Bip Bip Bip Error del detector."



Yellow LED (trouble error) Flashes 3 times every 10 seconds

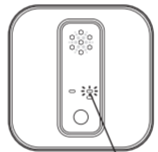
Yellow LED flashes 3 times every 10 seconds. Refer to "Troubleshooting" section for more information on resolving alarm errors.

## Low Battery Warning Activation

### ⚠️ WARNING

This Gas Alarm uses specialized batteries not available at retail stores. Contact DeNova Detect for replacement batteries.

A low battery warning sounds when the batteries are low. When the low battery alarm first activates, the Gas Alarm will beep 1 time and announce "Low battery" followed by an additional beep and announce "Batería baja".

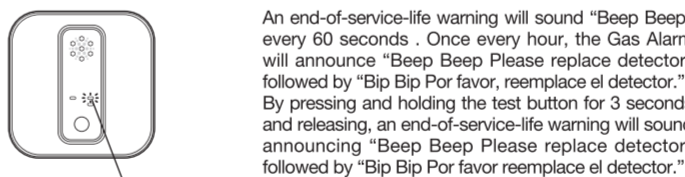


Contact DeNova Detect to arrange for replacement batteries.

Yellow LED flashes once every 10 seconds. Contact DeNova Detect for replacement batteries.

## Gas Alarm End-of-Service-Life Warning Activation

The Gas Alarm end-of-service-life warning sounds when the Gas Alarm end-of-service-life is reached to indicate it is time to replace the Gas Alarm. This Gas Alarm will reach the end-of-service-life in approximately 10 years after the installation date. Replace after end-of-service-life warning is activated. When the Gas Alarm end-of-service-life warning first activates, the Gas Alarm will sound 2 short beeps and announce "Please replace detector" followed by 2 additional short beeps and announce "Por favor, reemplace el detector."



Yellow LED (trouble error) Flashes twice every 10 seconds

Yellow LED flashes 2 times every 10 seconds. The audible Gas Alarm end-of-service-life warning can be silenced by pressing and holding the test button for 3 seconds and releasing. The Gas Alarm will provide 2 short beeps and announce "Please replace detector" followed by 2 additional short beeps and announce "Por favor reemplace el detector" after releasing the test button, at which point the Gas Alarm end-of-service-life warning will be silenced for approximately 8 hours. The yellow LED will still flash 2 times every 10 seconds during this time. After approximately 8 hours, the audible Gas Alarm end-of-service-life warning will re-activate. This audible alarm can be silenced for up to approximately 10 days after its initial activation, at which point it can no longer be silenced. Replace the Gas Alarm immediately upon activation of the Gas Alarm end-of-service-life warning.

## Testing the Gas Alarm Functions

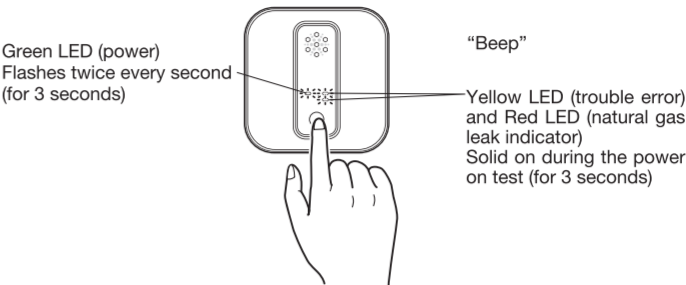
### ⚠️ CAUTION

Test your Gas Alarm's power and natural gas leak alarm notifications at least once a week.

If the Gas Alarm does not operate properly, it cannot alert you to the presence of natural gas. If your Gas Alarm fails to test, replace your Gas Alarm immediately.

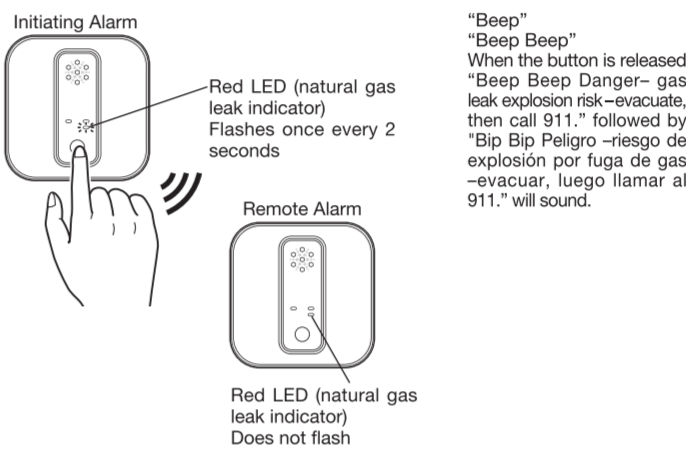
### Testing Power

Press and hold the test button until you hear a "Beep" sound, then quickly release (within 3 seconds from when the button was pressed). If the Gas Alarm is properly powered, the green LED will flash twice every second for 3 seconds to indicate that the power is on, and the yellow and red LEDs will remain on until the test sequence is complete.



## Testing Alarm Notifications

Press and hold the test button until you hear a "Beep" followed by "Beep Beep", then release within 3 to 10 seconds of the initial button press.



If the Gas Alarm is operating properly, the red LED will flash once every 2 seconds until the test sequence is complete, and the following alarm message will sound: "Beep Beep Danger – gas leak explosion risk – evacuate, then call 911." Bip Bip Peligro – riesgo de explosión por fuga de gas – evacuar, luego llamar al 911. If the other wirelessly interconnected Gas Alarms is operating properly, the following alarm message will sound: "Beep Beep Danger – gas leak explosion risk – evacuate, then call 911. Bip Bip Peligro – riesgo de explosión por fuga de gas – evacuar, luego llamar al 911."

## Wireless Disconnection

You cannot remove or add a single Gas Alarm from the Wirelessly Interconnected Gas Alarm Network after the interconnection sequence is complete. If you wish to remove or add a Gas Alarm in the Wirelessly Interconnected Gas Alarm Network, you must start the interconnection sequence over. Refer to "Interconnecting the Gas Alarms" section of this User's manual for additional information.

## Maintenance and Cleaning of Gas Alarm

### ⚠️ WARNING

If the Gas Alarm is installed in dusty or dirty atmospheric environments, periodic cleaning of the Gas Alarm should be performed in accordance with these instructions. Dirt and dust can cause Gas Alarm malfunction or obstruct the entry holes in which gas needs to flow to reach the sensor in the Gas Alarm. After cleaning, always test the Gas Alarm to ensure it has not been damaged.

Clean the Gas Alarm to maintain proper operation, by vacuuming the exterior of the Gas Alarm using a household vacuum's soft brush attachment.

Never use water, cleaners or solvents since they may damage the Gas Alarm.

Do not use spray cleaning chemicals or insect sprays directly on or near the Gas Alarm. Do not use any household cleaning agents, ammonia-based cleaners, paints, varnishes, aerosol sprays including compressed gas dusters, or any other chemical on or near this Gas Alarm.

## Troubleshooting

Symptom	Cause	Action
The green LED does not flash, and yellow and red LEDs do not turn solid on, even when the button is pressed.	Battery plug not properly plugged in Batteries are low	Plug in the battery plug Contact DeNova Detect for replacement batteries
The yellow LED is flashing.	Flashes three times every 10 seconds: Gas Alarm trouble Flashes twice every 10 seconds: Gas Alarm end-of-service-life warning	Replace Gas Alarm Replace Gas Alarm
	Flashes once every 10 seconds: Low battery warning	Contact DeNova Detect for replacement batteries
Interconnection mode will not initiate.	More than 30 minutes have passed after installing batteries.	Reinstall included batteries.
Wireless Interconnected Alarm does not activate.	Network connection error	Check the installation positioning

## Gas Alarm Disposal

### ⚠️ DANGER

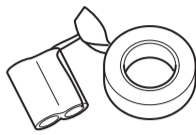
Prior to disposing of this Gas Alarm, remove the batteries and wrap them with tape or similar material as shown in the below image to avoid potential explosion or ignition that may result in injury or fire.

### ⚠️ DANGER

Do not incinerate. Batteries may explode.

When disposing of Gas Alarm, it is important to remove the batteries and wrap with tape or similar, non-flammable material as shown in the below image.

Dispose of batteries in accordance with local regulations relating to non-rechargeable (single use) lithium batteries. Dispose the Gas Alarm following your local regulations for solid waste disposal. Take the Gas Alarm to an electronics recycling facility (where such facilities exist) for disposal.



## Specifications