



11B-Ant1-2412--10.44-0.00-0.00-0.00



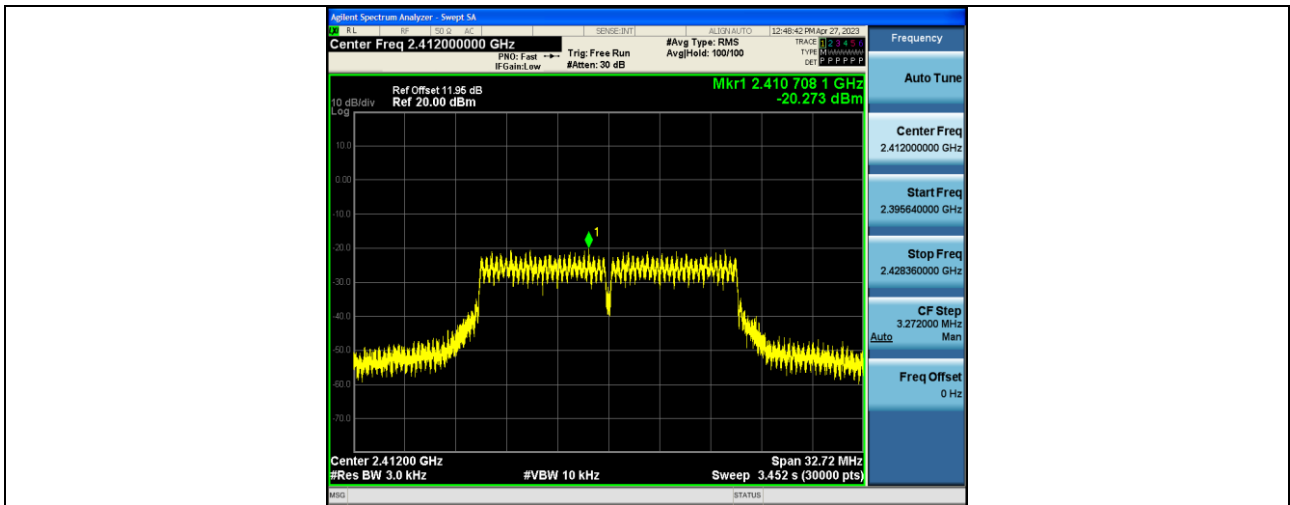
11B-Ant1-2437--10.55-0.00-0.00-0.00



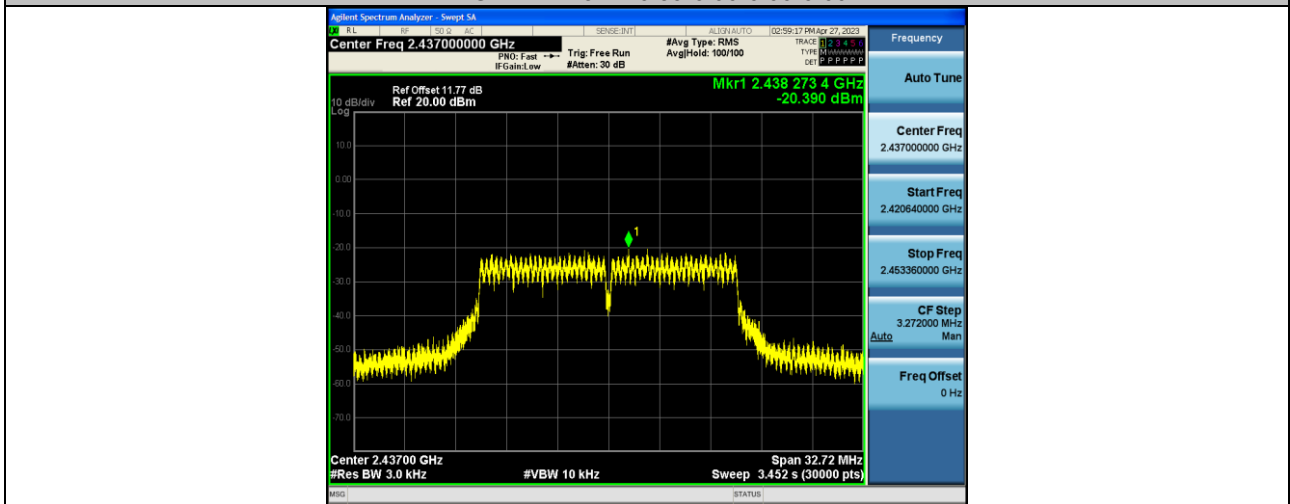
11B-Ant1-2462--12.70-0.00-0.00-0.00



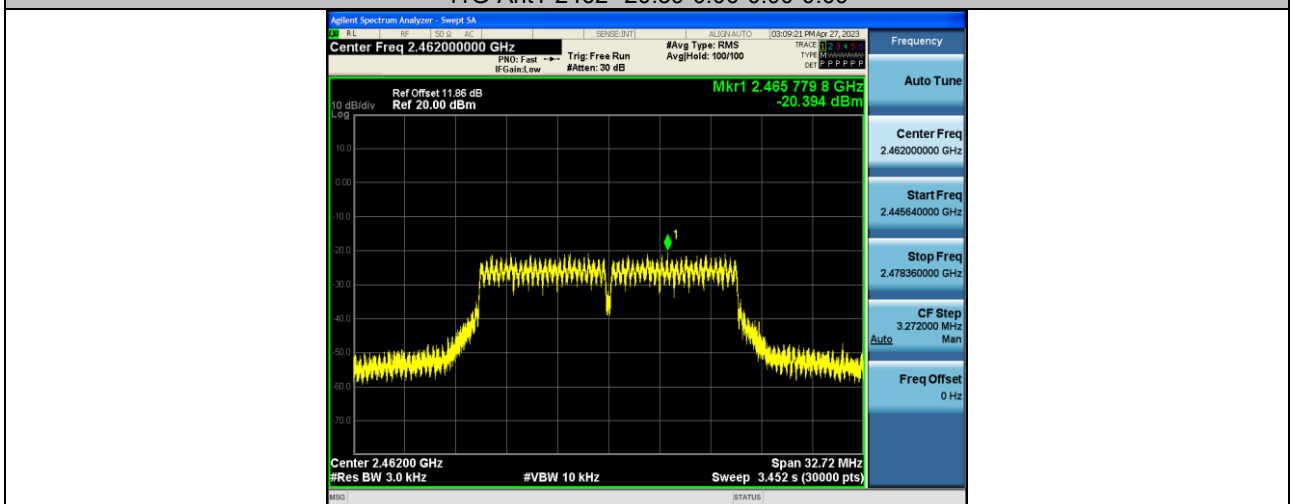
11G-Ant1-2412--20.27-0.00-0.00-0.00



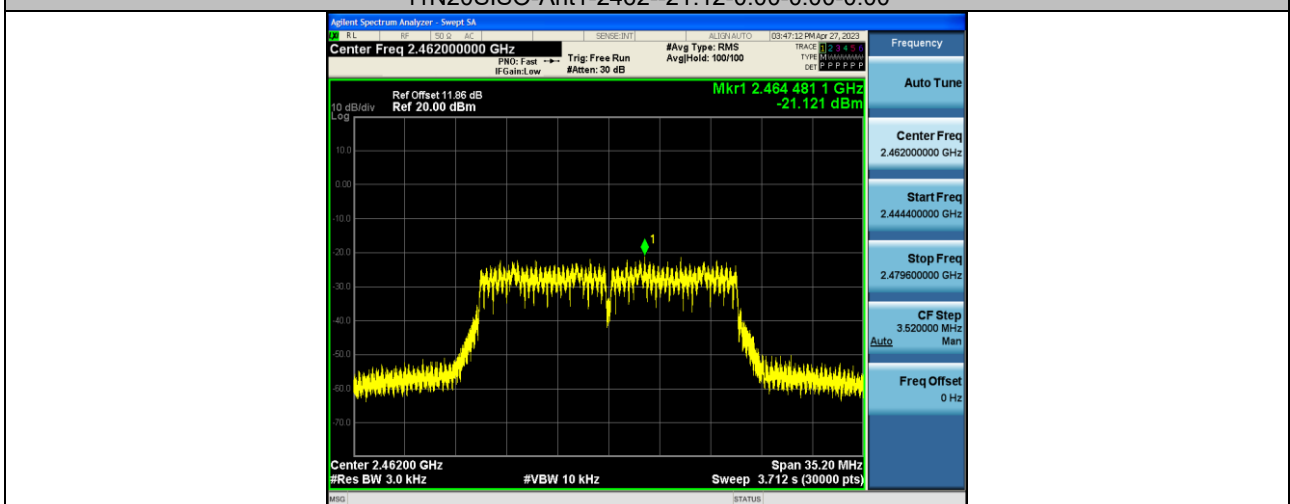
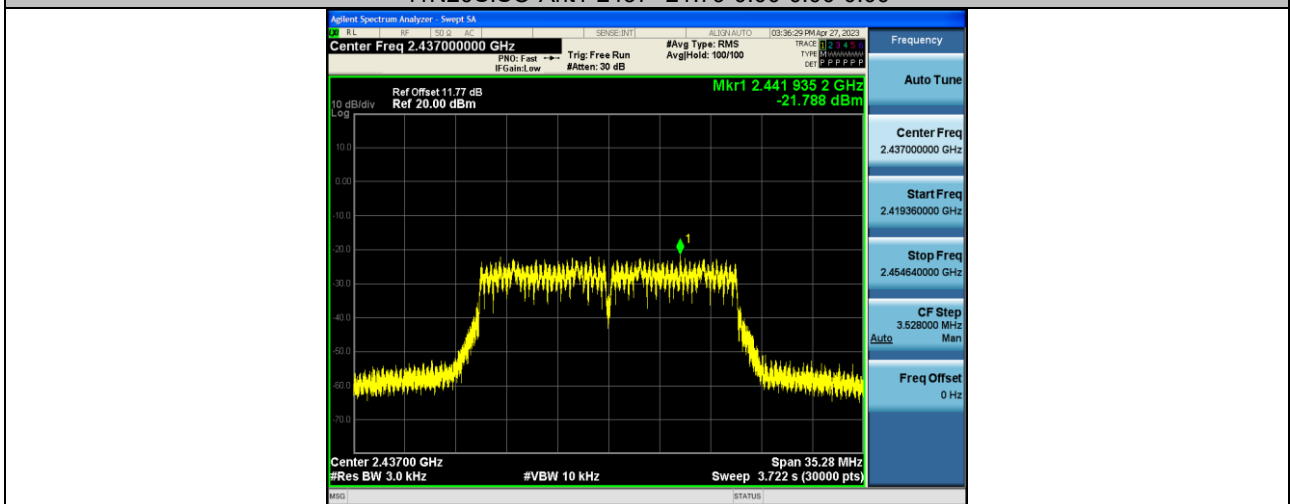
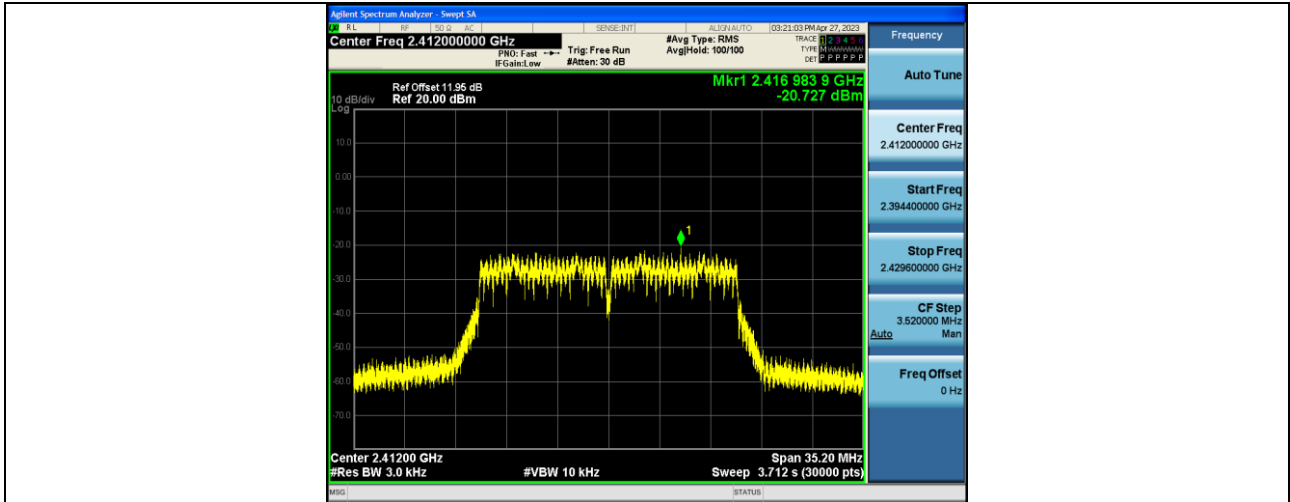
11G-Ant1-2437--20.39-0.00-0.00-0.00

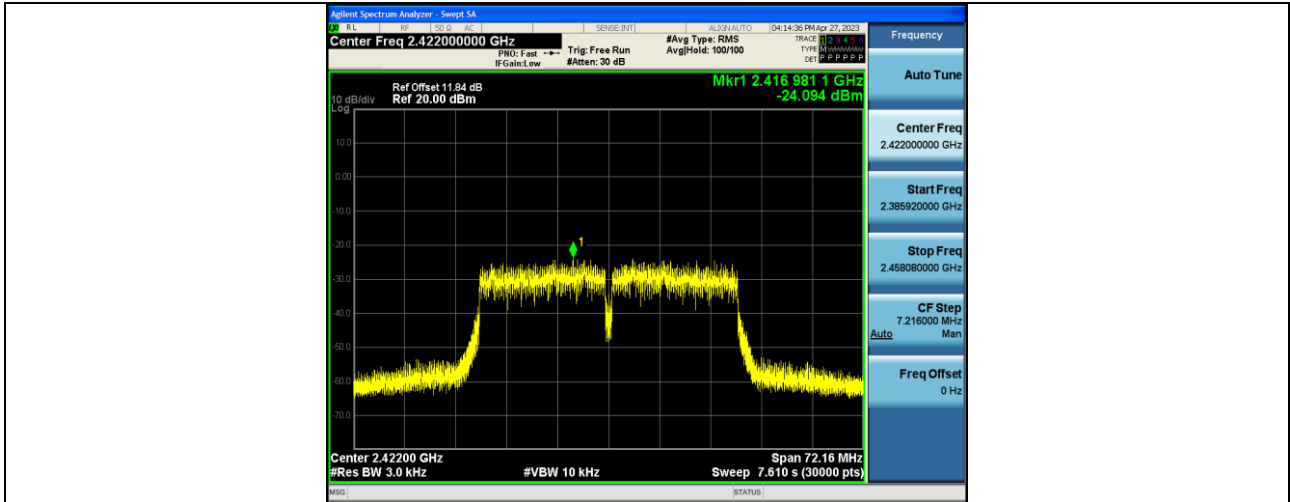


11G-Ant1-2462--20.39-0.00-0.00-0.00

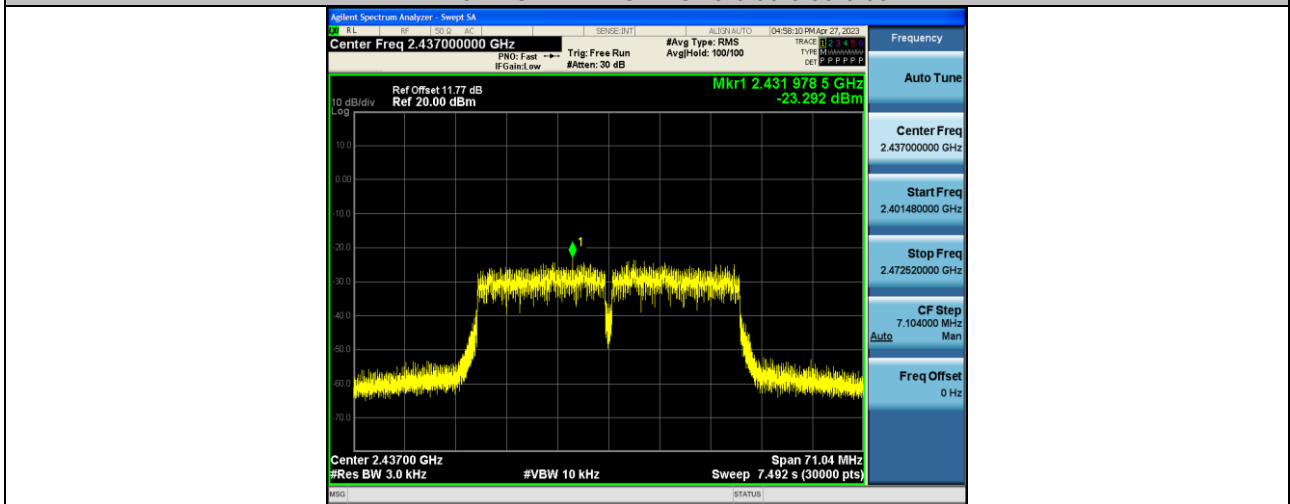


11N20SISO-Ant1-2412--20.73-0.00-0.00-0.00

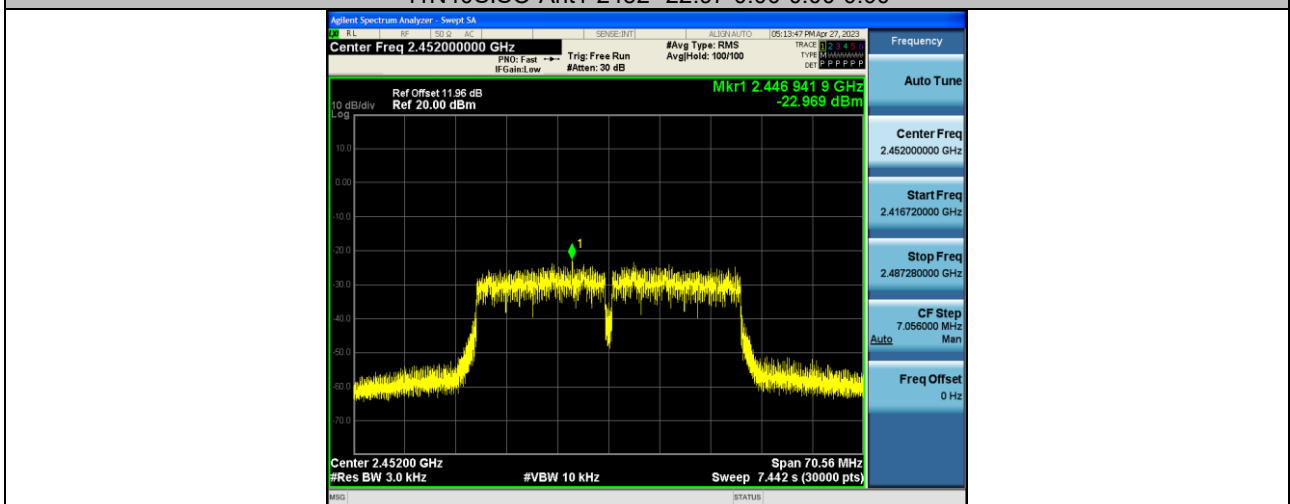




11N40SISO-Ant1-2437--23.29-0.00-0.00-0.00



11N40SISO-Ant1-2452--22.97-0.00-0.00-0.00





12 Antenna Application

12.1 Antenna Requirement

For intentional device, according to FCC 47 CFR Section 15.203, an intentional radiator shall be designed to ensure that no antenna other than that furnished by the responsible party shall be used with the device. And according to FCC 47 CFR Section 15.247 (b), if transmitting antennas of directional gain greater than 6dBi are used, the power shall be reduced by the amount in dB that the directional gain of the antenna exceeds 6dBi.

12.2 Result

The EUT'S antenna, permanent attached antenna, is Integral Antenna. The antenna's gain is 3.23 dBi and meets the requirement.

13 Test Setup

Conducted Emissions

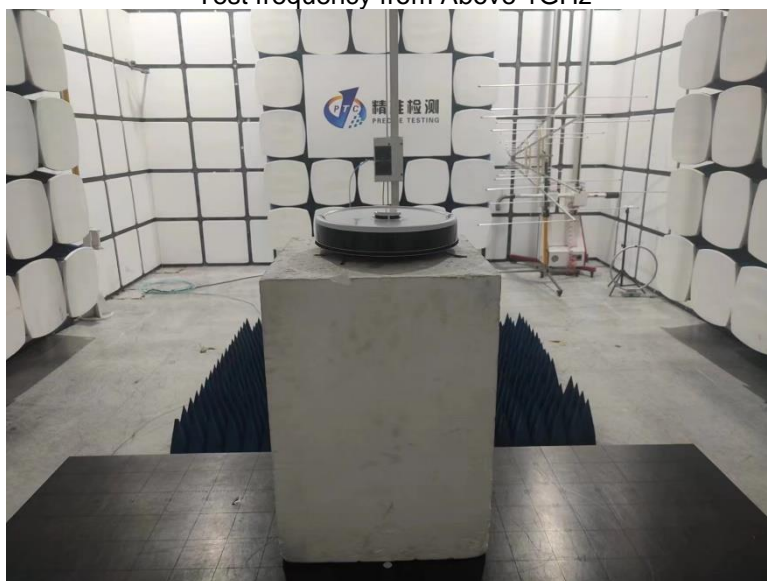


Radiated Spurious Emissions
From 30MHz-1000MHz



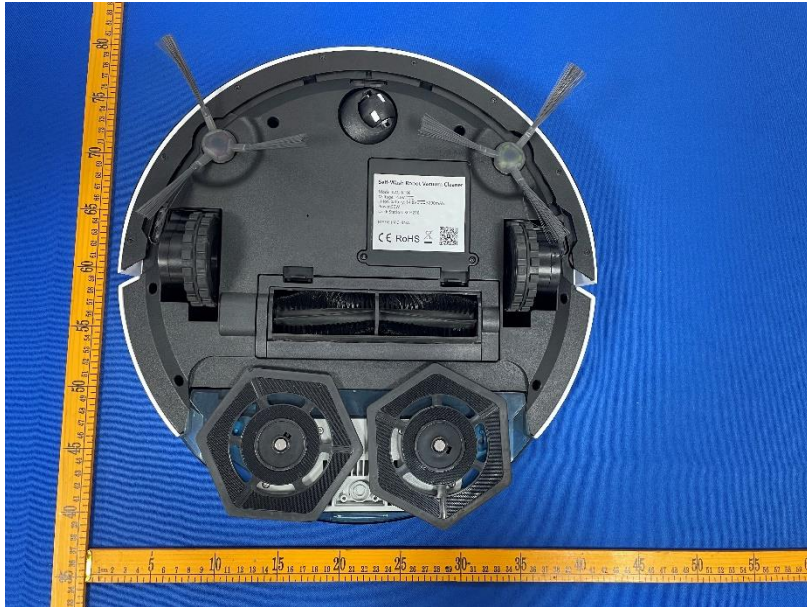


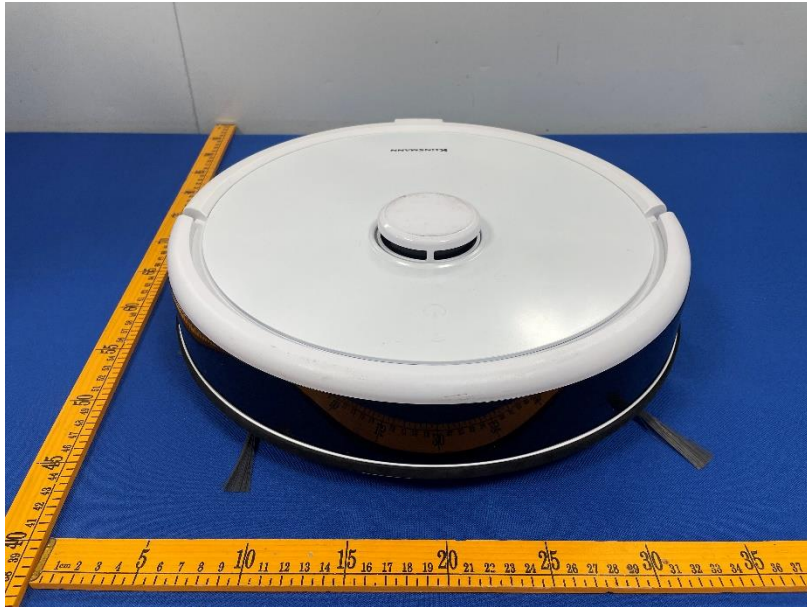
Test frequency from Above 1GHz

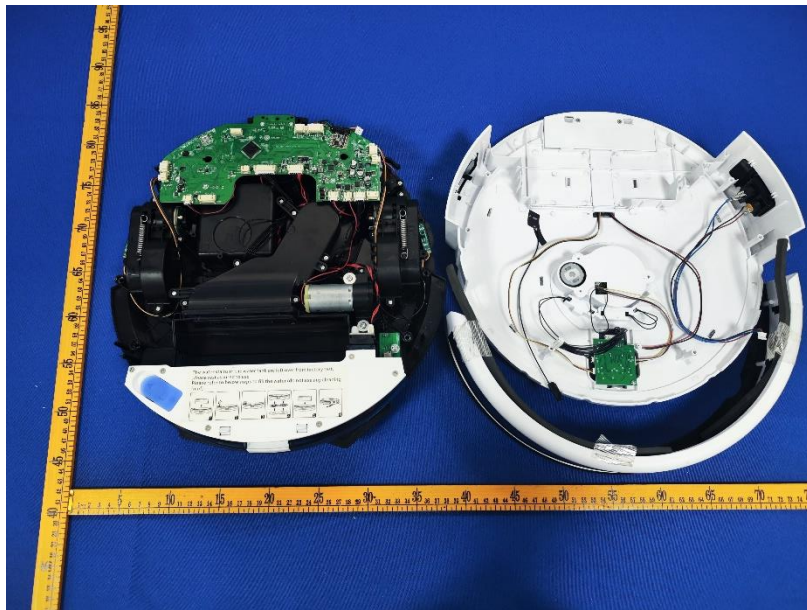


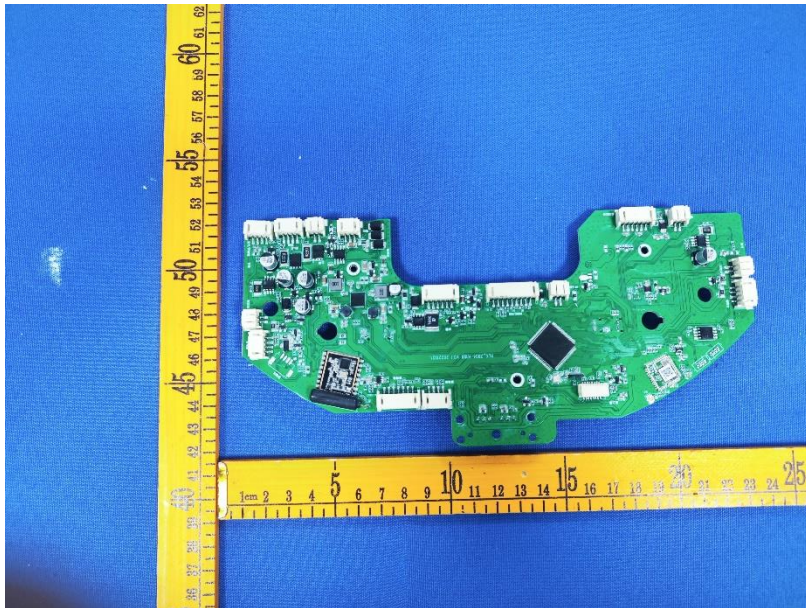
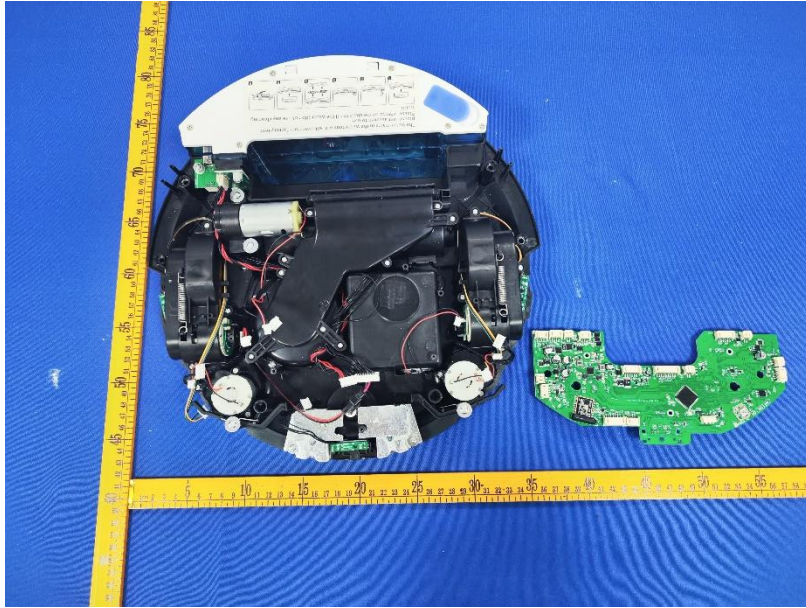
14 EUT PHOTOS

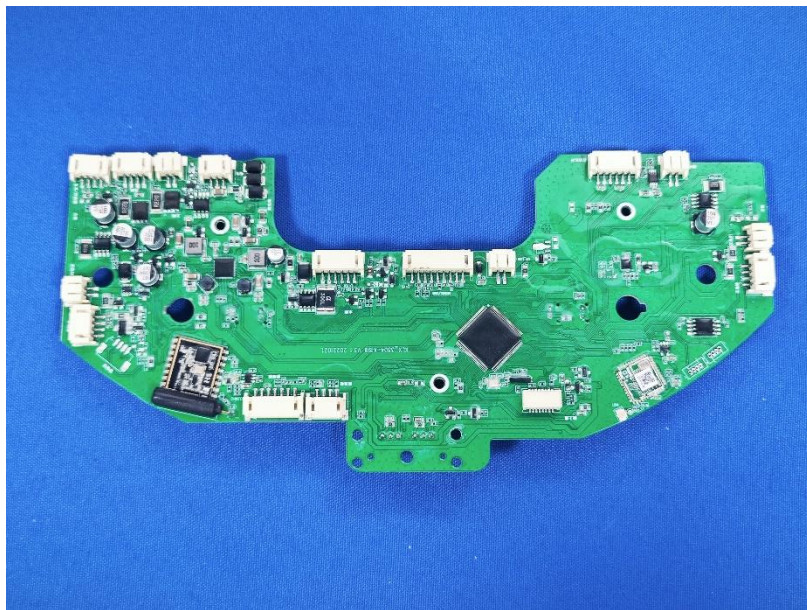
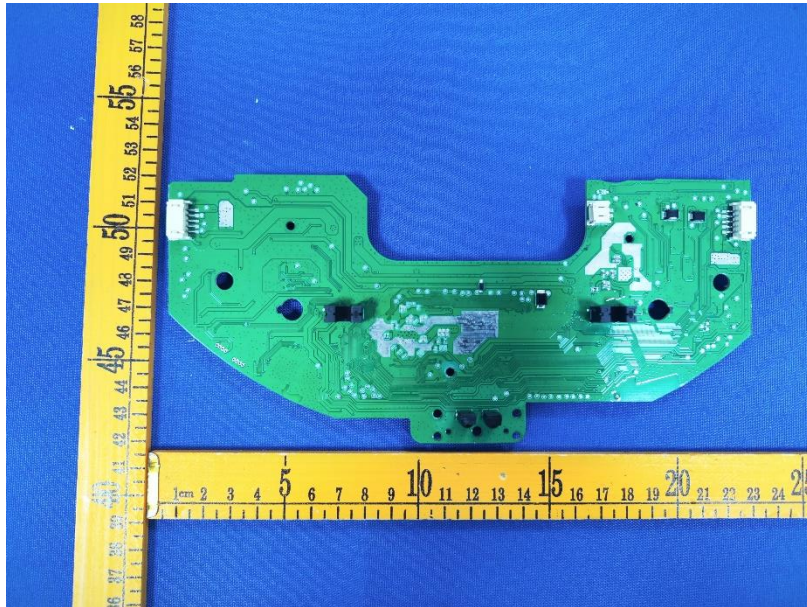


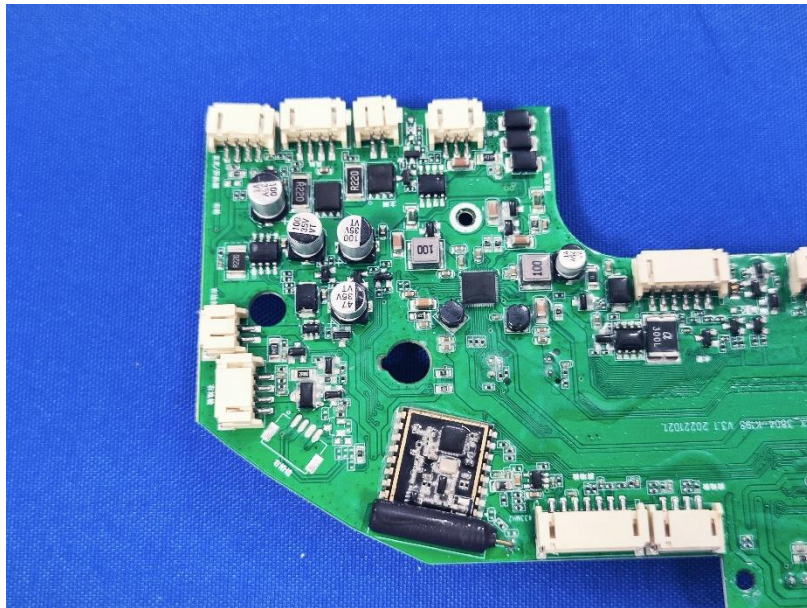
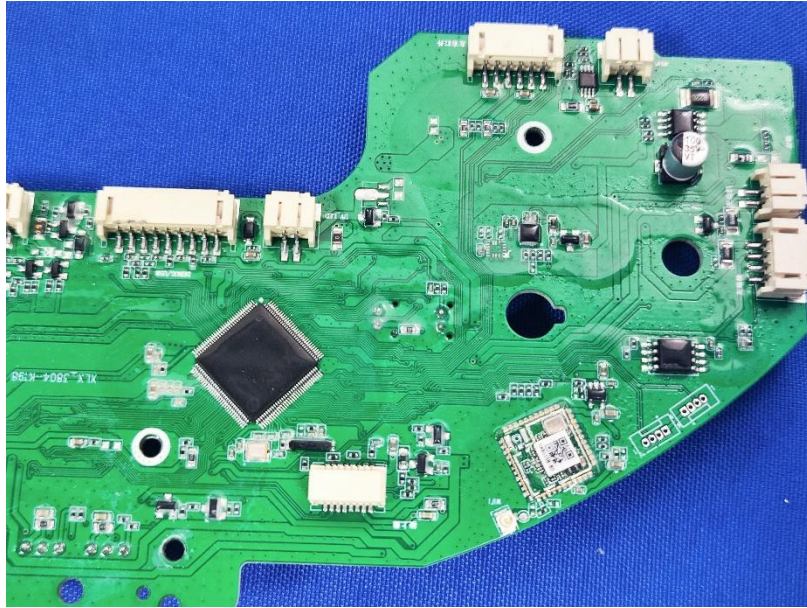


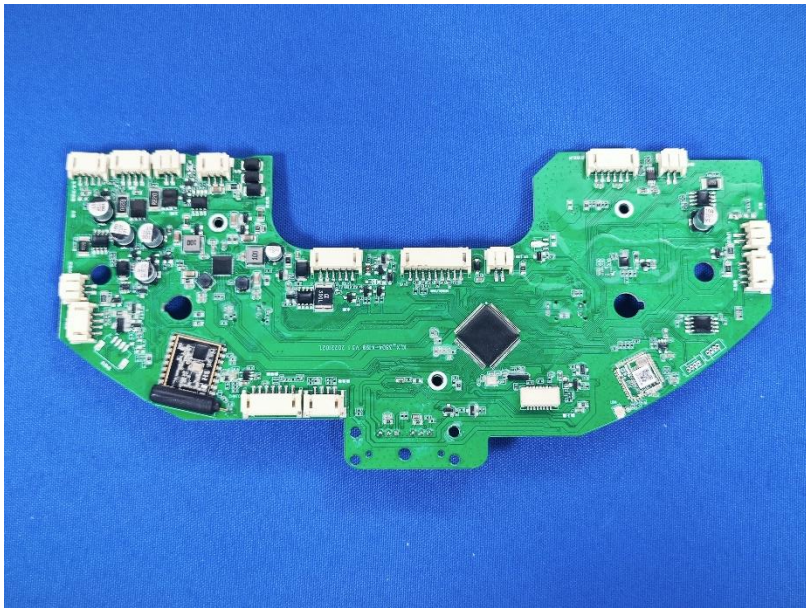


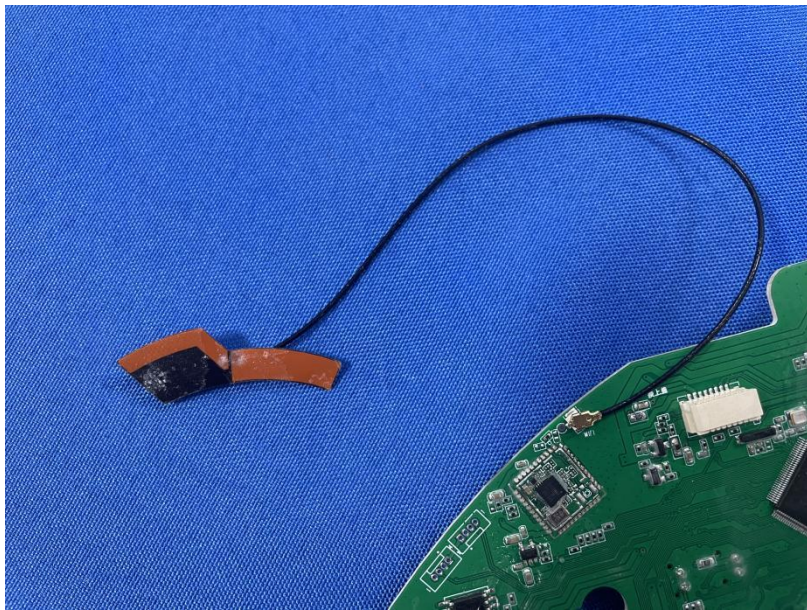
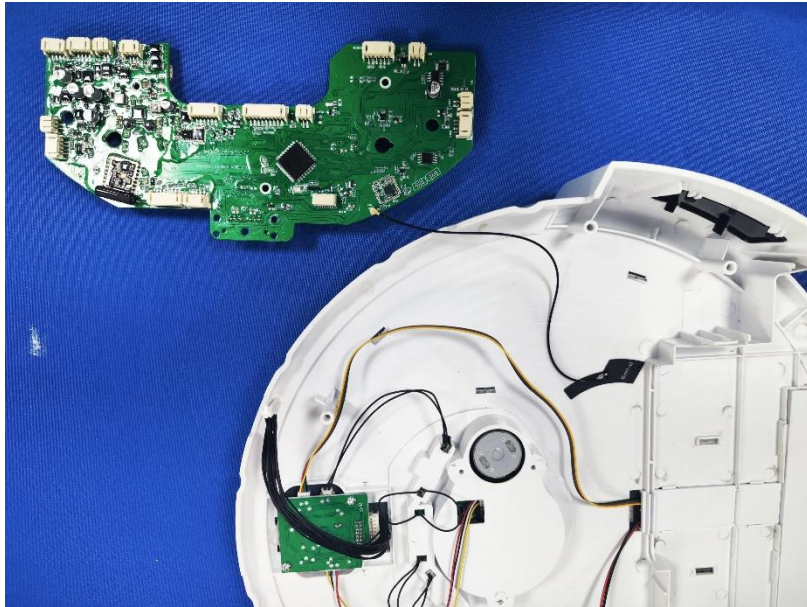












*****THE END REPORT*****