

thank you

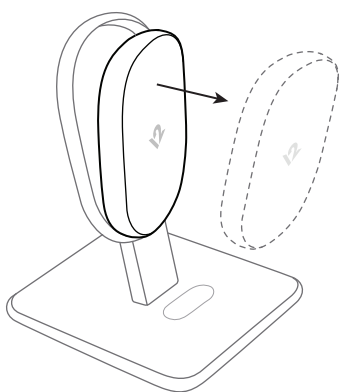
Making beautiful accessories for your Apple devices since 2009. Personalize your gear and discover more accessories at twelvesouth.com.

HiRise Wireless

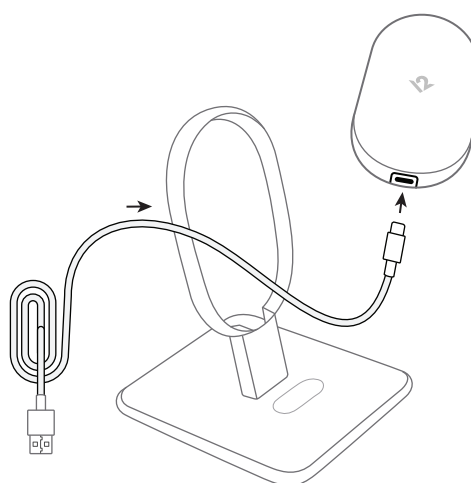
2-in-1 desktop charging stand and travel charger



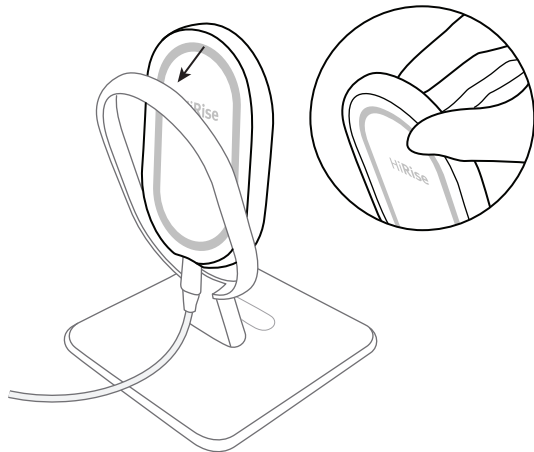
On desktop



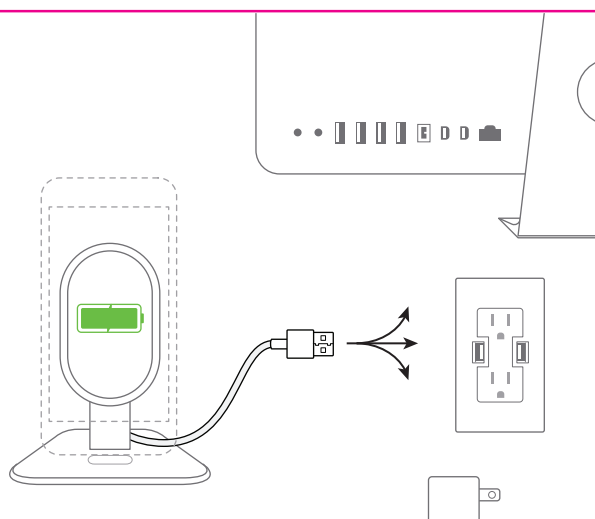
1 Remove HiRise Wireless Mobile Charging Puck from HiRise Wireless Desktop Charging Base by gently pushing Puck out from behind.



2 Pass USB-C Cable through Ring and connect to Charging Puck

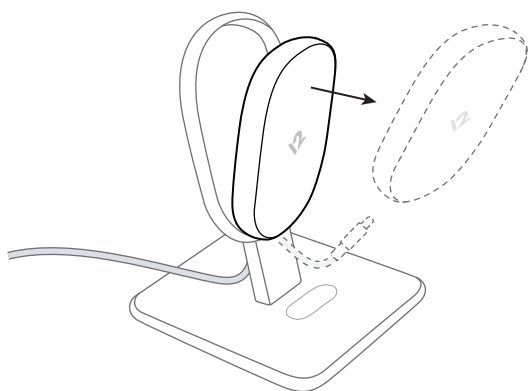


3 With the Cord at the bottom, gently place Charging Puck back into the ring and Press the top of the Charging Puck to secure.

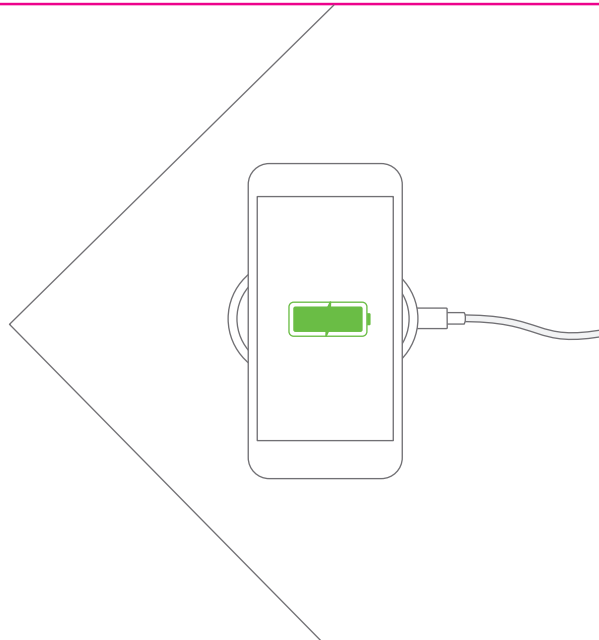


4 Plug other end of Cable into power source.

On the go



1 Remove HiRise Wireless Mobile Charging Puck from HiRise Wireless Desktop Charging Base by gently pushing Puck out from behind. Then disconnect Cable from Charging Puck.



HiRise Wireless status light



The light on the side of the Charging Puck lets you know the charging status of your device.

This light also alerts you to foreign objects between the Charging Puck and the Desktop Charging Base.

Additional notes & specs

The foreign object detection light alerts you to objects between your device and HiRise Wireless that could affect charging. This helps to prevent the charger from emitting unnecessary power and heat that could damage your smartphone and other heat-sensitive items.

To prevent overheating and damage to your HiRise Wireless or device:

- Do not place any foreign objects, such as metal or magnets, between the phone and HiRise Wireless. This may interfere with charging, causing overheating or damage to the device.
- Do not place any magnetic stripes or IC chip card on the HiRise Wireless. This may cause damage.
- Do not cover the charging base with any material or cloth. This may interfere with charging performance.
- Do not let dust accumulate on the charging stand and keep the surface clean.

FCC ID Statement
This equipment complies with Part 15 of the FCC Rules. Operation is subject to the following two conditions:
This device may not cause harmful interference, and
This device must accept any interference received, including interference that may cause undesired operation.

Additional notes & specs

Any changes or modifications not expressly approved by the party responsible for compliance could void the user's authority to operate this equipment.

IC WARNING
This device contains licence-exempt transmitter(s)/receiver(s) that comply with Innovation, Science and Economic Development Canada's licence-exempt RSS(s). Operation is subject to the following two conditions:
(1) This device may not cause interference.
(2) This device must accept any interference, including interference that may cause undesired operation of the device

ADVERTENCIA IC
Cet appareil contient des émetteurs / récepteurs exempts de licence conformes aux RSS (RSS) d'Innovation, Sciences et Développement économique Canada. Le fonctionnement est soumis aux deux conditions suivantes :
(1) Cet appareil ne doit pas causer d'interférences.
(2) Cet appareil doit accepter toutes les interférences, y compris celles susceptibles de provoquer un fonctionnement indésirable de l'appareil.

HiRise Wireless Tech Specs
Input connector: USB Type C
Note: Included cable is 1.5m USB Type C to USB Type A
Input: 5V=2A , 9V=1.67A
Output: 5V=1A , 6V=1.25A , 9V=1.1A
Operation Frequency: 110-205 KHZ
Modulation type: ASK
Antenna Type: Coil Antenna
Charging efficiency: 2-8mm ; 2mm max → =75% / 8mm max → =72%

Model No.: 12-1811
Patent Pending. Assembled in China.
FCC ID : 2AREBHR182Z
IC ID : 24385-182Z

Have more questions?

Visit twelvesouth.com or contact support@twelvesouth.com