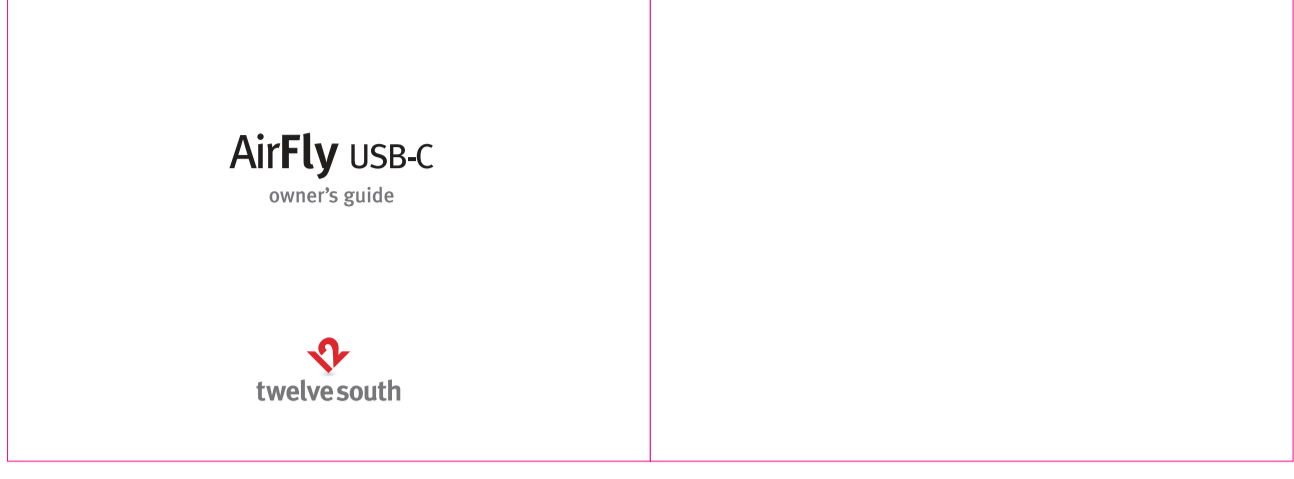
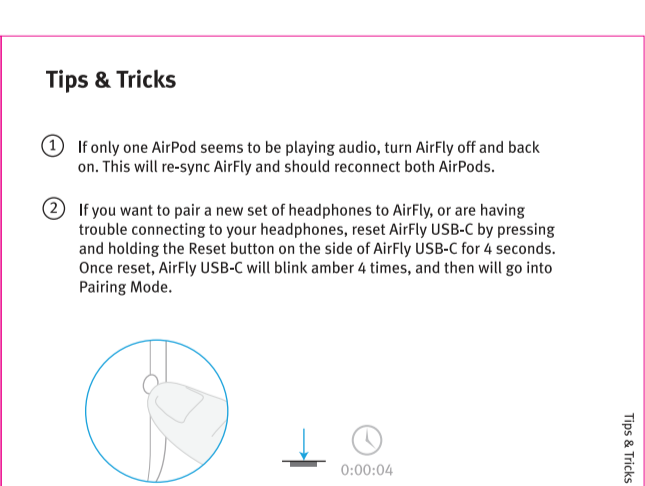
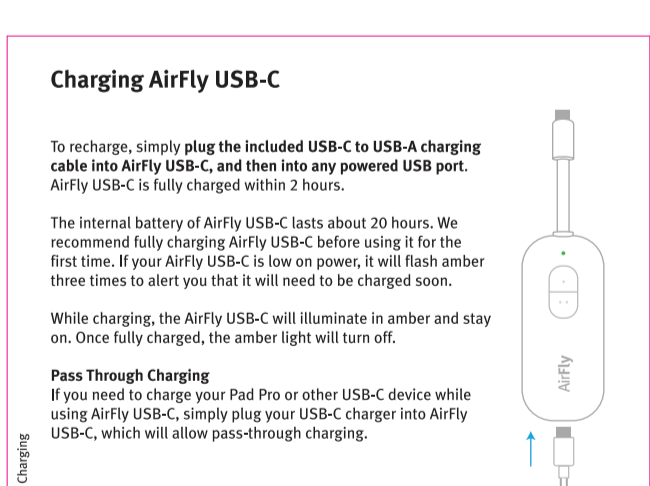
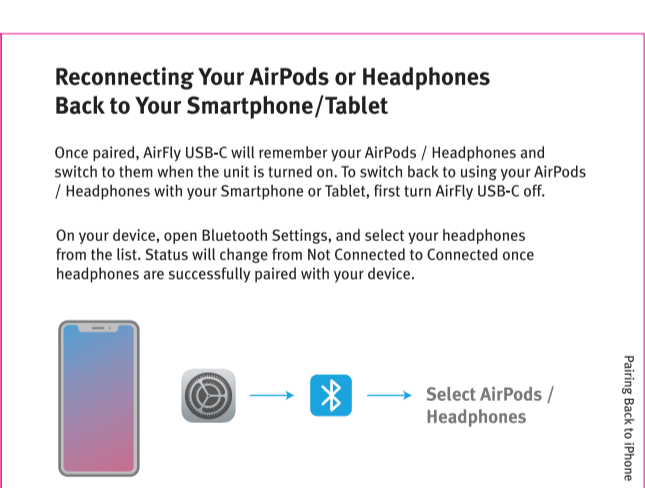
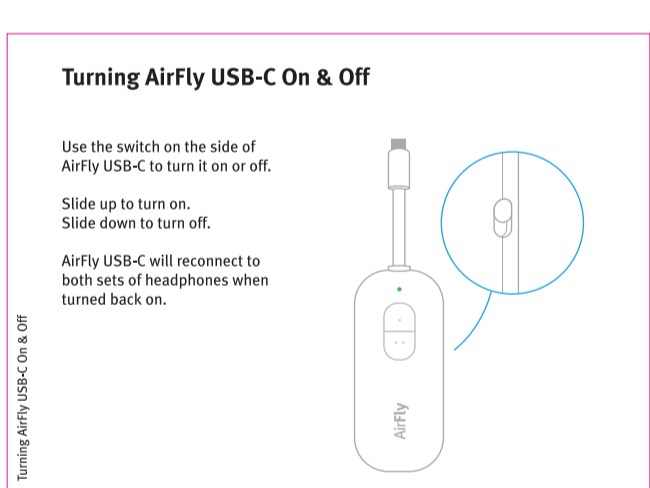
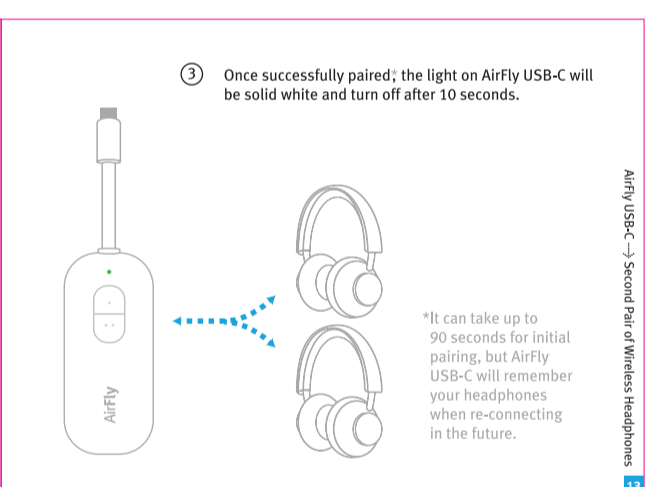
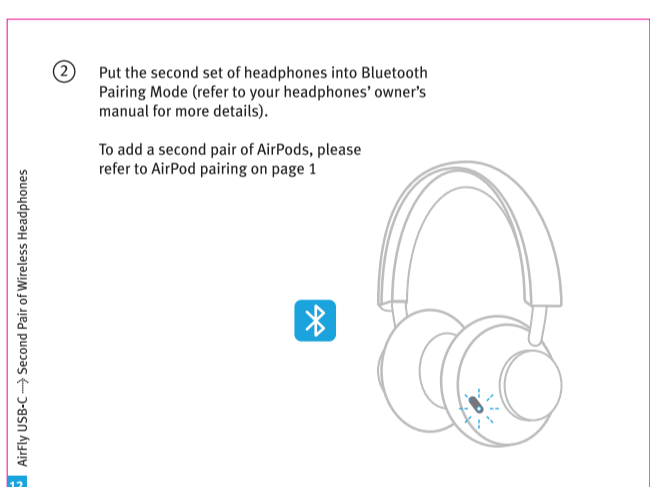
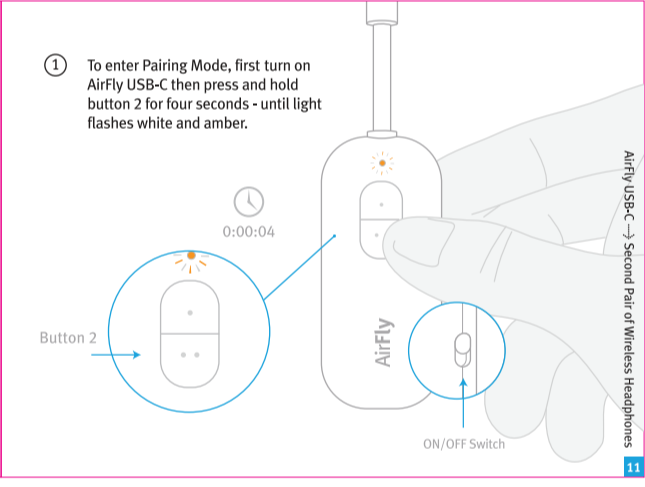
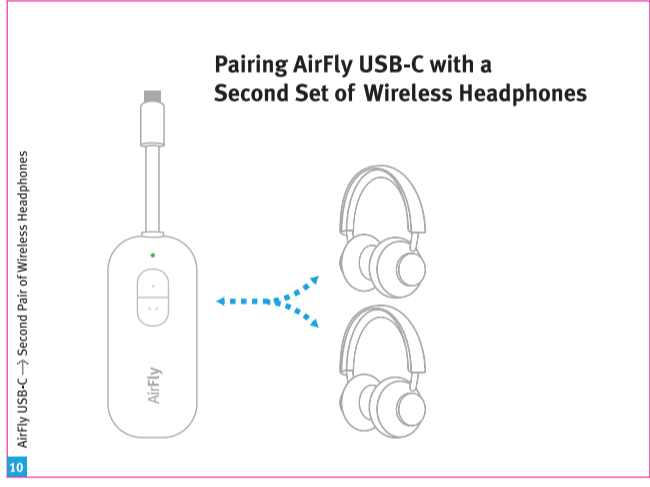
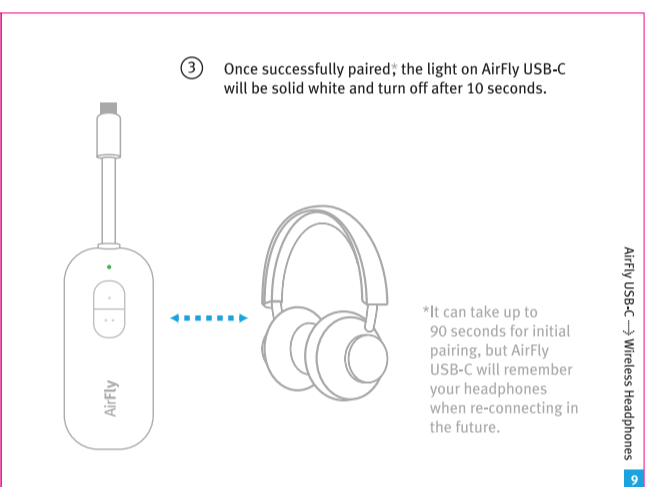
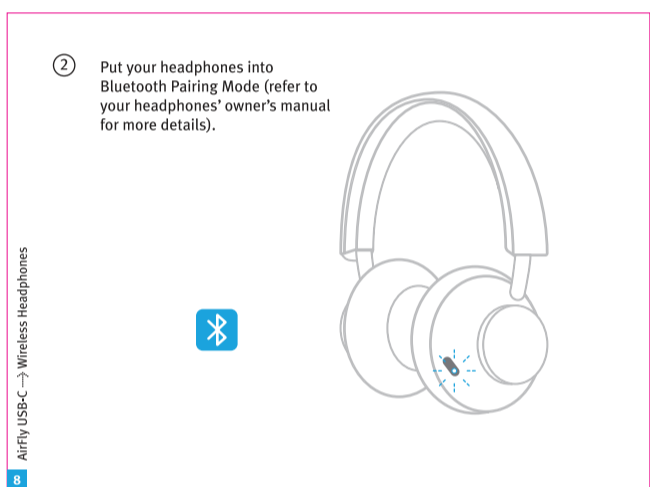
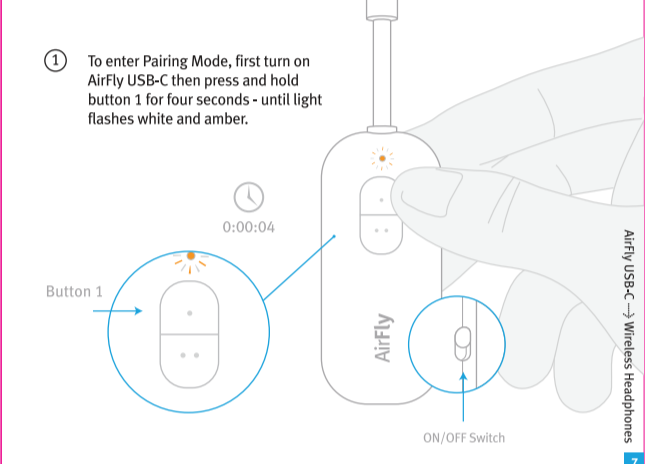
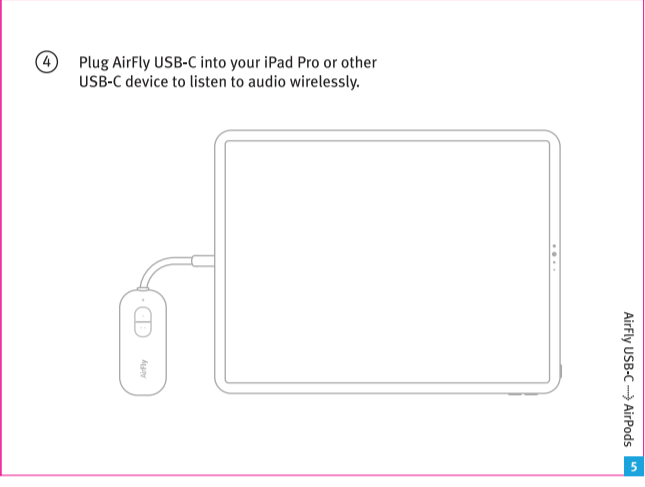
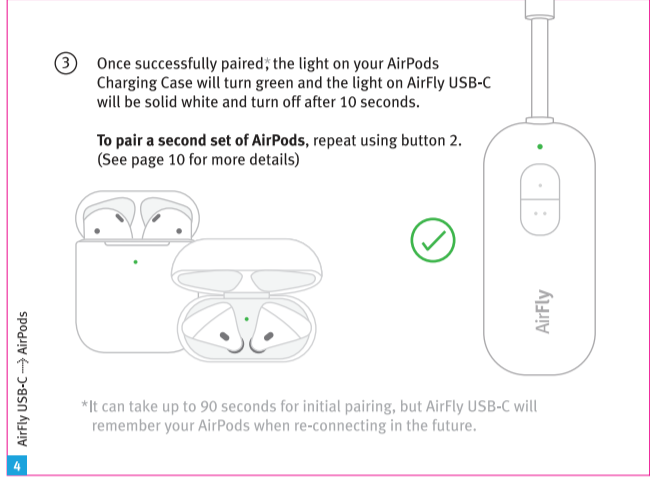
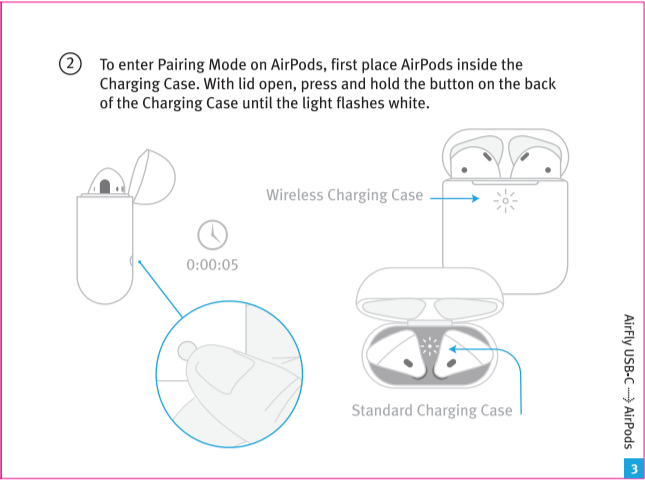
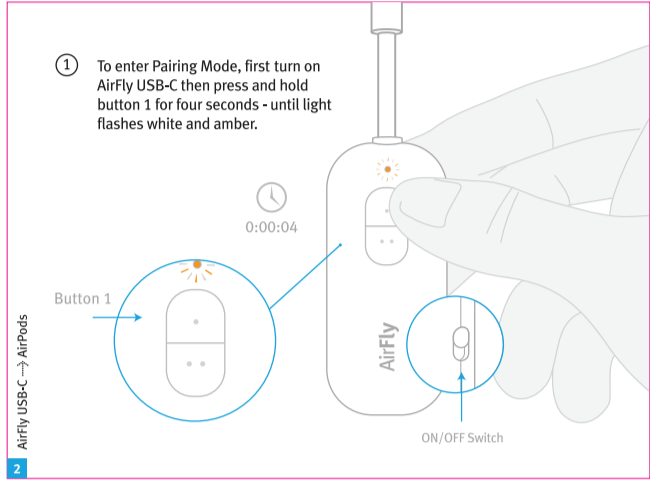
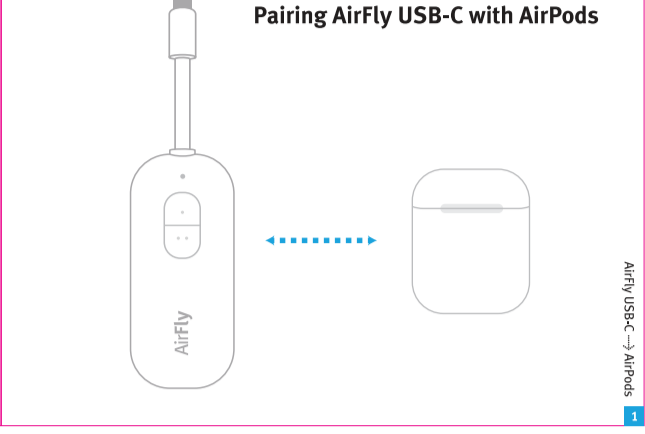


## 封面



<b>Pairing AirFly USB-C with AirPods</b>	<b>1</b>
<b>Pairing AirFly USB-C with Wireless Headphones</b>	<b>6</b>
<b>Pairing AirFly USB-C with a Second Set of Wireless Headphones</b>	<b>10</b>
<b>Turning AirFly USB-C On &amp; Off</b>	<b>14</b>
<b>Reconnecting Headphones to iPhone</b>	<b>15</b>
<b>Charging</b>	<b>16</b>
<b>Tips &amp; Tricks</b>	<b>17</b>
<b>Status Light Guide</b>	<b>18</b>



	<b>Power On</b>	White LED flashes twice
	<b>Pairing Mode</b>	White & Amber LED flash alternately
	<b>Disconnected Standby Mode</b>	White LED flashes twice every 5 seconds
	<b>Connected Standby Mode</b>	Solid White LED
	<b>Low Power</b>	Amber LED flashes 3 times
	<b>Charging</b>	Solid Amber
	<b>Fully Charged</b>	Amber LED turns off

**FCC Statement**  
This device complies with Part 15 of the FCC Rules. Operation is subject to the following two conditions: (1) this device may not cause harmful interference, and (2) this device must accept any interference received, including interference that may cause undesired operation.

**Warning:** Changes or modifications not expressly approved by the party responsible for compliance could void the user's authority to operate the equipment.

**Note:** This equipment has been tested and found to comply with the limits for a Class B digital device, pursuant to part 15 of the FCC Rules. These limits are designed to provide reasonable protection against harmful interference in a residential installation. This equipment operates, uses and can radiate radio frequency energy and, if not installed and used in accordance with the instructions, may cause harmful interference to radio communications. However, there is no guarantee that interference will not occur in a particular installation. If this equipment does cause harmful interference to radio or television reception, which can be determined by turning the equipment off and on, the user is encouraged to try to correct the interference by one or more of the following measures:

- Reorient or relocate the receiving antenna.
- Increase the separation between the equipment and receiver.
- Connect the equipment into an outlet on a circuit different from that to which the receiver is connected.
- Consult the dealer or an experienced radio/TV technician for help.

**ISED Statement**  
This device complies with the Canadian Interference-causing Equipment (ICE) requirements. L'équipement est conforme aux exigences de la Commission canadienne de radiocommunication (CCRC) relatives à l'émission de radiofréquences.

**REDO**  
Hendry, Twelve South, LLC, declare that the radio equipment type, Model number 12-912, is in compliance with Directive 2014/53/EU. The full text of EU declaration of conformity is available at our website: <http://www.twelvesouth.com>

Frequency range: 2400 - 2483.5MHz  
Transmission power: <math>10\text{mW}</math>

