

DASH

Quick Start Guide

SINGER

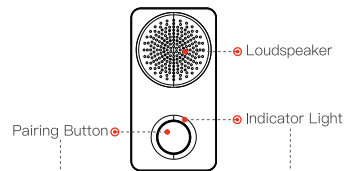
Packing List:

◆ Video Doorbell ◆ Quick Start Guide ◆ Installation Accessories Package ◆

T2.00114874

V1.0.0

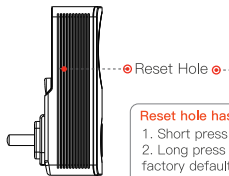
01 Product Appearance



Description of Pairing Button
Long press it for 5s to enter pairing mode.

State Description of Indicator Light

Blue Flashing		• Wireless router is not connected; • Cloud service is not connected; • Enable hotspot.
Blue Solid		• Cloud service is connected successfully.



Reset hole has 2 functions:
1. Short press the reset hole to pair.
2. Long press it for 10s, to restore factory defaults.

02 Add Device

Step 1: Download and log into the Dash App

- 1 Connect your smartphone to your Wi-Fi network, download and install the Dash App
- 2 Run the Dash App, and register an account for the first use.

Step 2: Add Device

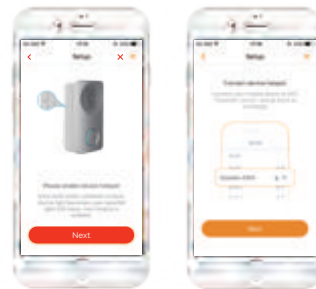
- 1 At device list interface, press + to enter "QR Code Scanning" interface.
- 2 Scan QR code to get the SN, or you can also manually enter the SN on the next page.
- 3 Connect power socket, and press reset button (pinhole) at the side of the device.

If the chime beeps and blue indicator light flashes, it means that the device hotspot has been enabled.

Tips:

Long press the button in the front of the device for 5s, and the hotspot can be enabled too.

- 4 Connect your smartphone with hotspot. Hotspot Wi-Fi name is Doorbell-device serial number.



- 5 Set device password; If this device is not used for the first time, the interface is to enter device password.




- 6 Choose the Wi-Fi to be connected. Input Wi-Fi network password and press "Connect".



- 7 Please check if device indicator light is blue solid. If the blue indicator light doesn't turn on, press [Add again], repeat above steps to add it again. If blue light turns on, it means that the connection is successful. Press [Yes] to add the device to APP.




Step 3: Link Chime

- 1 Select "Me> My Device > Device Name > Link Chime" or click  in device menu.
- 2 Select "New Link". The system displays wireless chime list.
- 3 Select the chime and press [Save] to add it.



Step 4: Set ring.

Set the chime ring at the matched doorbell.

- 1 Select "Me> My Device > Device Name > Link Chime" or click  in device menu.
- 2 Select "Ring Setup". The system displays ring list; A, B and C represent ring A, ring B and ring C.
- 3 Select a ring, and press [Save] to complete setting.



03 FAQ

Try to solve your problems here quickly

► Q: How to restore factory settings?

Please press Reset Button on the side panel of the device with a needle for 10s. Blue light will be on for 3s and then turn off; the device will reboot automatically and restore factory default settings.

► Q: The device cannot work normally?

Please restore default settings of the device, and configure the device again.

► Q: How to enter wireless configuration mode?

Please short press Pairing Button on the rear panel of the device, until the indicator light turns to be green flashing light, it means that hotspot has been enabled.

► Q: The device is not online?

Please check the state of device indicator light. If blue light flashes all the time, it means that the device fails to connect the network. Please check whether wireless router can connect the network; connect your smartphone with this wireless network, in order to test it. If it can connect the network, please configure the device again.

► Q: Connection is overtime?

- a. After the device has enabled hotspot, your smartphone doesn't connect the hotspot for a long time, and thus leads to overtime.
- b. The device starts configuration without reminder of waiting to connect the network.

► Q: The device doesn't respond?

Please confirm whether power input wiring of the device is correct.

04 Important Safeguards & Warnings

The following description is the correct application method of the device. Please read the manual carefully before use, in order to prevent danger and property loss. Strictly conform to the manual during application and keep it properly after reading.



Caution

- ◆ Please don't place and install the device in an area exposed to direct sunlight or near heat generating device.
- ◆ Please don't install the device in a humid, dusty or fuliginous area.
- ◆ Please keep its horizontal installation, or install it at stable places, and prevent it from falling.
- ◆ Please don't drip or splash liquids onto the device; don't put on the device anything filled with liquids, in order to prevent liquids from flowing into the device.
- ◆ Please install the device at well-ventilated places; don't block its ventilation opening.
- ◆ Use the device only within rated input and output range.
- ◆ Please don't dismantle the device arbitrarily.
- ◆ Please transport, use and store the device within allowed humidity and temperature range.

Special Statement

- ◆ This document is for reference only. Please refer to the actual product for more details.
- ◆ The user's manual and program will be updated in a real-time way according to the product, which won't be further notified.
- ◆ The user shall undertake any losses resulting from violation of guidance in the document.
- ◆ The document may include technically inaccurate contents, inconsistencies with product functions and operations, or misprint. Final explanations of the company shall prevail.



Caution

The user is cautioned that changes or modifications not expressly approved by the party responsible for compliance could void the user's authority to operate the equipment.

Note:

This equipment has been tested and found to comply with the limits for a Class B digital device, pursuant to part 15 of the FCC Rules. These limits are designed to provide reasonable protection against harmful interference to radio communications. However, there is no guarantee that interference will not occur in a particular installation. If this equipment does cause harmful interference to radio or television reception, which can be determined by turning the equipment off and on, the user is encouraged to try to correct the interference by one or more of the following measures:

- ◆ Reorient or relocate the receiving antenna.
- ◆ Increase the separation between the equipment and receiver.
- ◆ Connect the equipment into an outlet on a circuit different from that to which the receiver is connected.
- ◆ Consult the dealer or an experienced radio/TV technician for help.

FCC RF Radiation Exposure Statement:

This equipment complies with FCC radiation exposure limits set forth for an uncontrolled environment. This equipment should be installed and operated with a minimum distance of 20cm between the radiator and any part of your body.

Privacy Protection Notice

As the device user or data controller, you might collect personal data of others' such as face, fingerprints, car plate number, Email address, phone number, GPS and so on. You need to be in compliance with the local privacy protection laws and regulations to protect the legitimate rights and interests of other people by implementing measures include but not limited to: providing clear and visible identification to inform data subject the existence of surveillance area and providing related contact.